

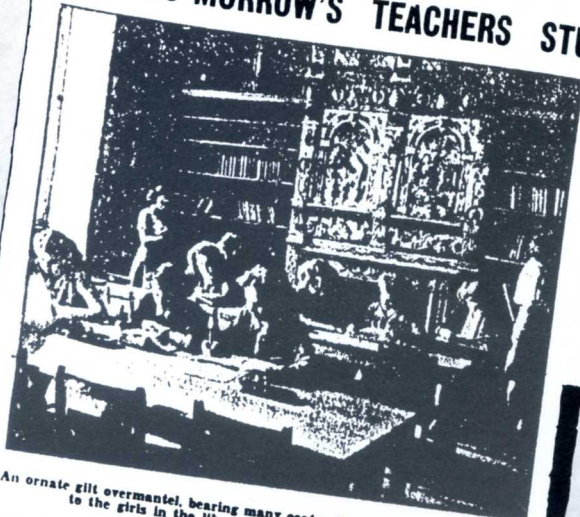
# EARL LEAVES ELVASTON FOR IRELAND



## DAILY GRAPHIC

12 JULY 1947

### TO-MORROW'S TEACHERS STUDY IN A CASTLE



In the spacious setting of Elvaston Castle, near Derby, 250 young women are studying to become teachers. They are taking a two-year course. Here grandeur, beauty and historical associations surround them. These "Daily Graphic" pictures show the girls in the castle and in the grounds.



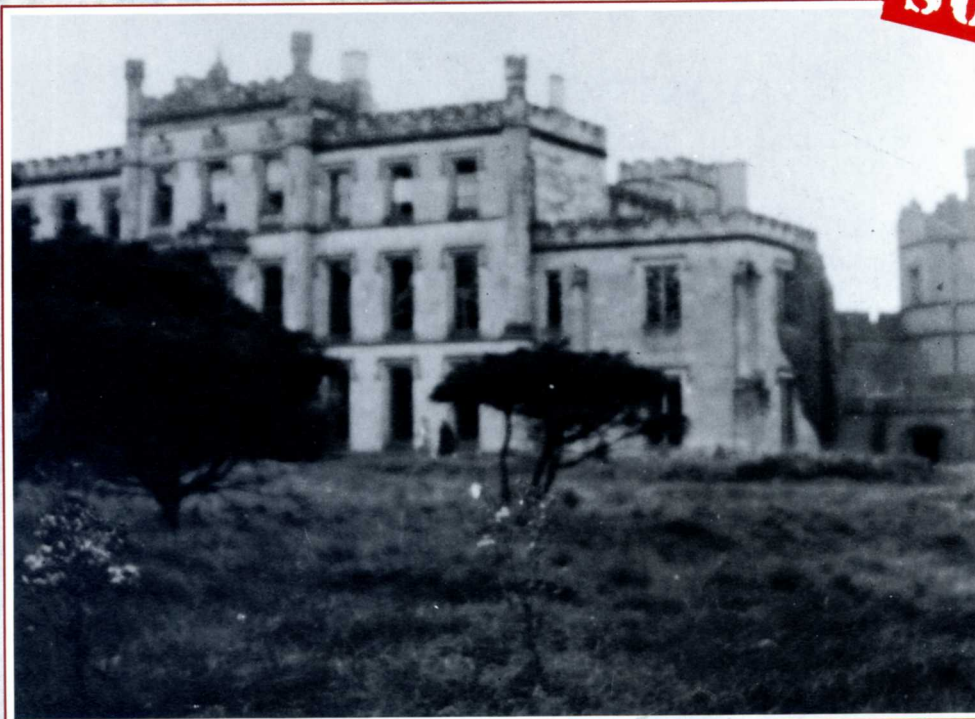
An ancient lion carved from Derbyshire granite provides a seat for a student.

An ornate gilt overmantel, bearing many coats-of-arms, is the background to the girls in the library, which is now a classroom.

Open air theatre production by students of Derby Teacher Training College.



**SOLD**



In the late 1930s, William Stanhope, 11th Earl of Harrington, left Elvaston for County Limerick in Eire, where the family still live. The Harringtons had connections with Ireland over several centuries and had owned a property there for many years.

During and after the war (1939–1950), Elvaston Castle was home to a teacher training college, evacuated from Derby city, five miles away. Finding room at Elvaston for over one hundred and fifty students and staff was a feat of ingenuity. Every available room was pressed into service. The dining-room could hold only half the students and so meals were in two sittings, while the Hall of the Fair Star served as lecture room, assembly hall and common-room.

The students were privileged to use the beautiful Elvaston church as their private chapel. The gardens and grounds were greatly enjoyed, particularly by those studying natural sciences, and the lakeside lawns with their grottoes and fountains provided idyllic scenery for open air theatre.

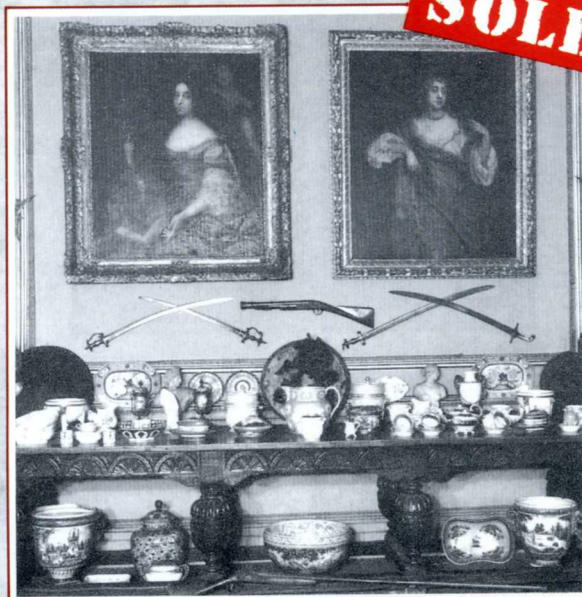
'Black-out' rules had to be obeyed and the cellar was fitted out with bunks and used as an air raid shelter. One stick of bombs fell close to the castle, shattering windows, but that was Elvaston's only experience of war.

In 1963 Elvaston was once more in the news. The Earl decided to sell the estate to meet the expense of death duties. As Sothebys prepared for the sale of fine English furniture, prior to the auctioning of the castle itself, the press gave details of just a few valuable items; an Adam state four-poster bed, Chippendale mahogany settees, eighteenth-century wall mirrors, and a pair of rare

and fine George III library globes. This specialist sale at Sothebys in London was followed by a two-day sale of contents at Elvaston Castle.

The Elvaston estate was sold to the Needlers Development Company in 1963. In 1969 the castle and 390 acres of land were bought jointly by Derbyshire County Council and Derby Corporation, for the establishment of a Country Park.

**SOLD**



Sale of contents, 18th/19th March 1964 – illustration from the auction catalogue.