

Access

Derbyshire

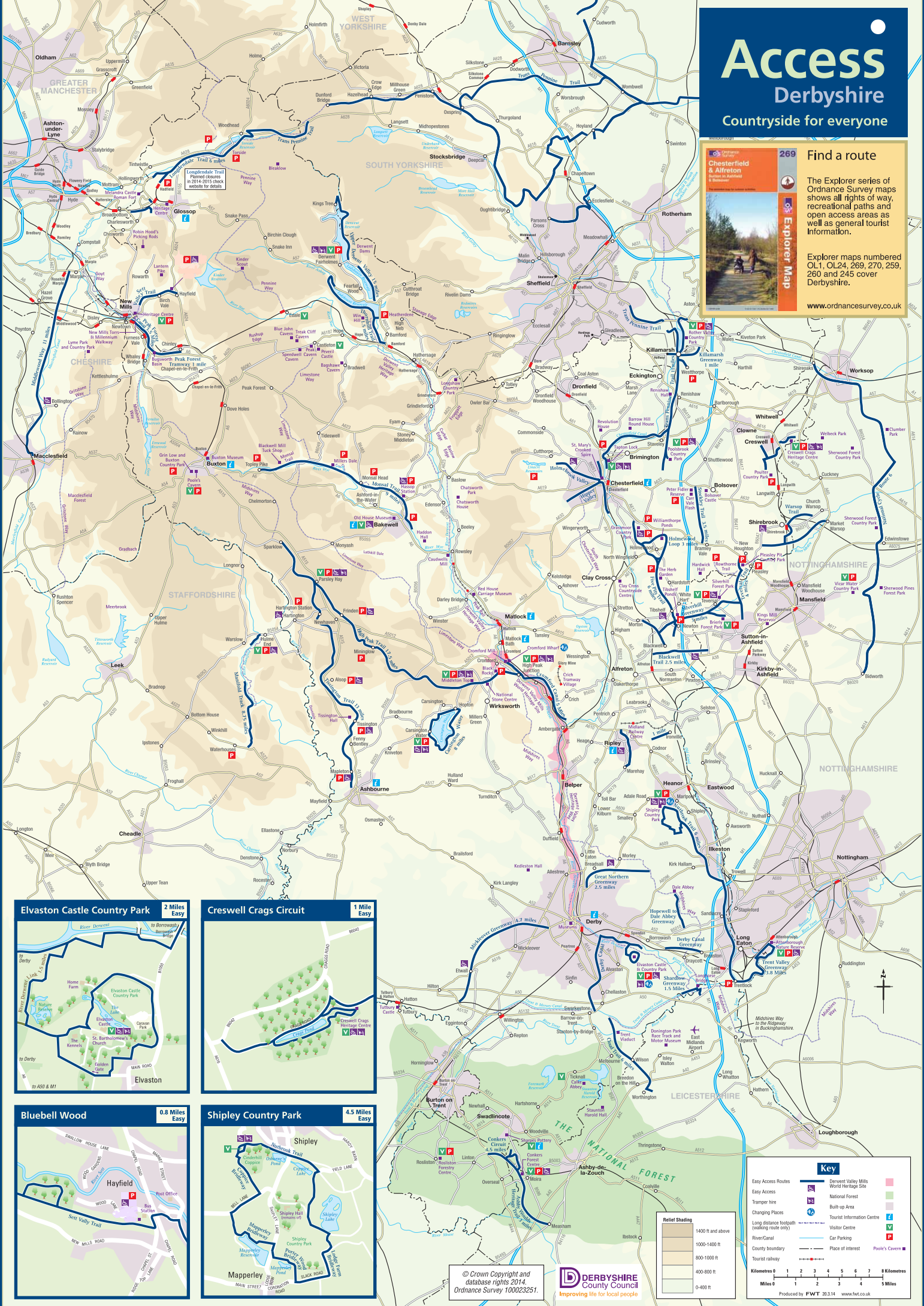
Countryside for everyone

269 Find a route

The Explorer series of Ordnance Survey maps shows all rights of way, recreational paths and open access areas as well as general tourist information.

Explorer maps numbered OL1, OL24, 269, 270, 259, 260 and 245 cover Derbyshire.

www.ordnancesurvey.co.uk



Elvaston Castle Country Park 2 Miles Easy

Map showing the Elvaston Castle Country Park area, including the River Derwent, Elvaston Castle, and surrounding fields. The map is oriented with North at the top.

Creswell Crags Circuit 1 Mile Easy

Map showing the Creswell Crags Circuit area, including the Crags and surrounding fields. The map is oriented with North at the top.

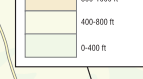
Bluebell Wood 0.8 Miles Easy

Map showing the Bluebell Wood area, including the wood and surrounding fields. The map is oriented with North at the top.

Shipley Country Park 4.5 Miles Easy

Map showing the Shipley Country Park area, including the park and surrounding fields. The map is oriented with North at the top.

© Crown Copyright and database rights 2014. Ordnance Survey 100023251.



Key

- Easy Access Routes
- Easy Access
- Tramper hire
- Changing Places
- Long distance footpath (walking route only)
- River/Canal
- County boundary
- Tourist railway
- Derwent Valley Mills World Heritage Site
- National Forest
- Built-up Area
- Tourist Information Centre
- Visitor Centre
- Place of Interest
- Peak's Caverns

Relief Shading

- 1400 ft and above
- 1000-1400 ft
- 800-1000 ft
- 400-800 ft
- 0-400 ft

Scale

Kilometres 0 1 2 3 4 5 6 7 8 Kilometres

Miles 0 1 2 3 4 5 Miles

Produced by FWT 20.14 www.fwt.co.uk