

DERBYSHIRE AND DERBY MINERALS LOCAL PLAN

SITE ASSESSMENT: MAPS WHITWELL

**DECEMBER 2016
(AMENDED FEBRUARY 2017)**

Note

The boundary of the promoted North Extension area has been amended to reflect that contained in the Planning Application (CM5/0416/4) which seeks permission for the extraction of mineral from the four promoted extension areas to Whitwell Quarry.

Contents

The following Maps are for use in conjunction with the Site Assessment Sheet

Map1: Site Plan including resource information

Map 2: Site Plan including 200 and 500 metre buffer zones

2a: North Extension

2b: North East Extension

2c: East Extension

2d: South East extension

Map 3: Transport

Map 4: Flood Zones and Groundwater Source Protection Zones

Map 5: Important Aquifer Zones

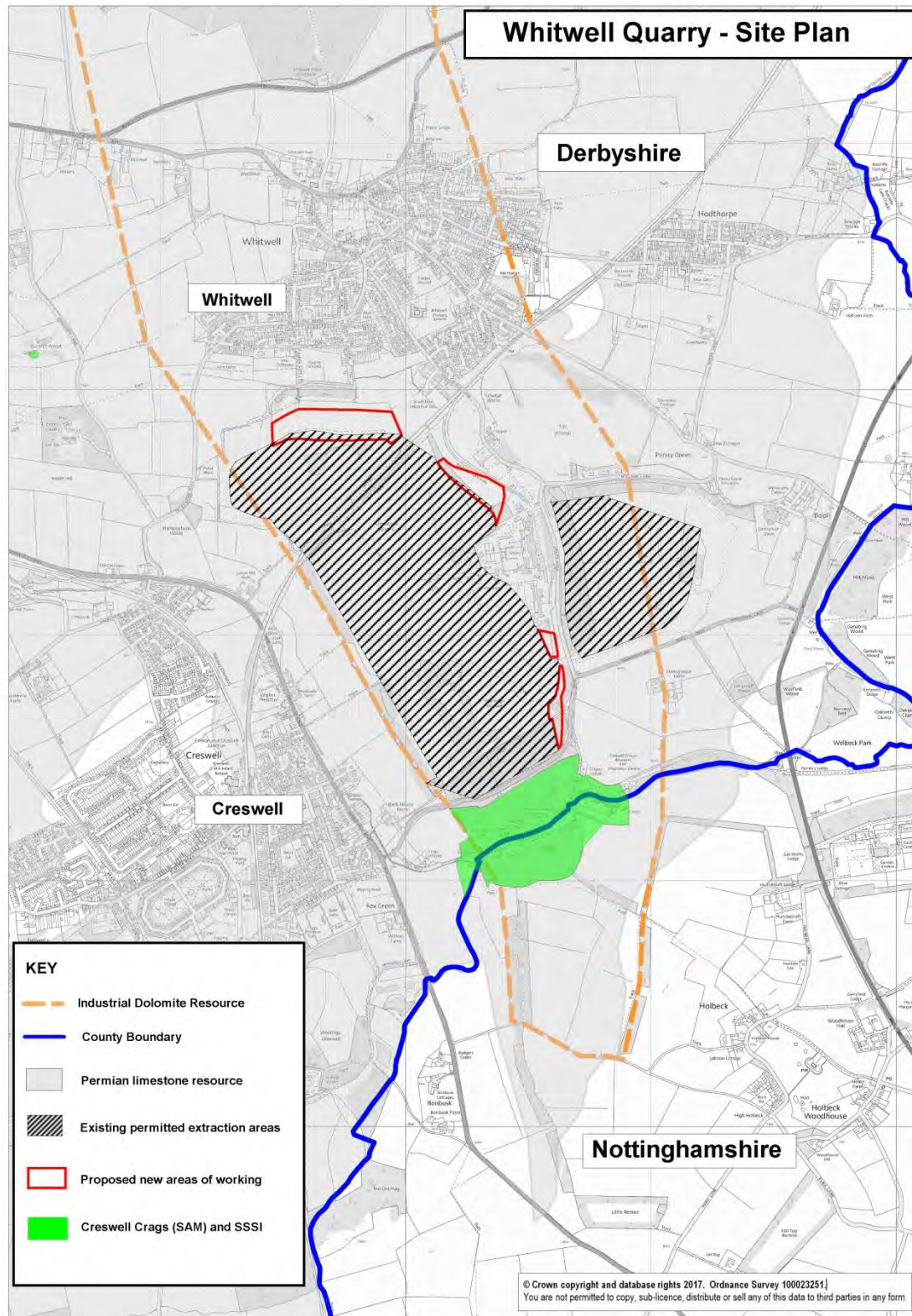
Map 6: Ecological Assets

Map 7: Landscape Character Areas

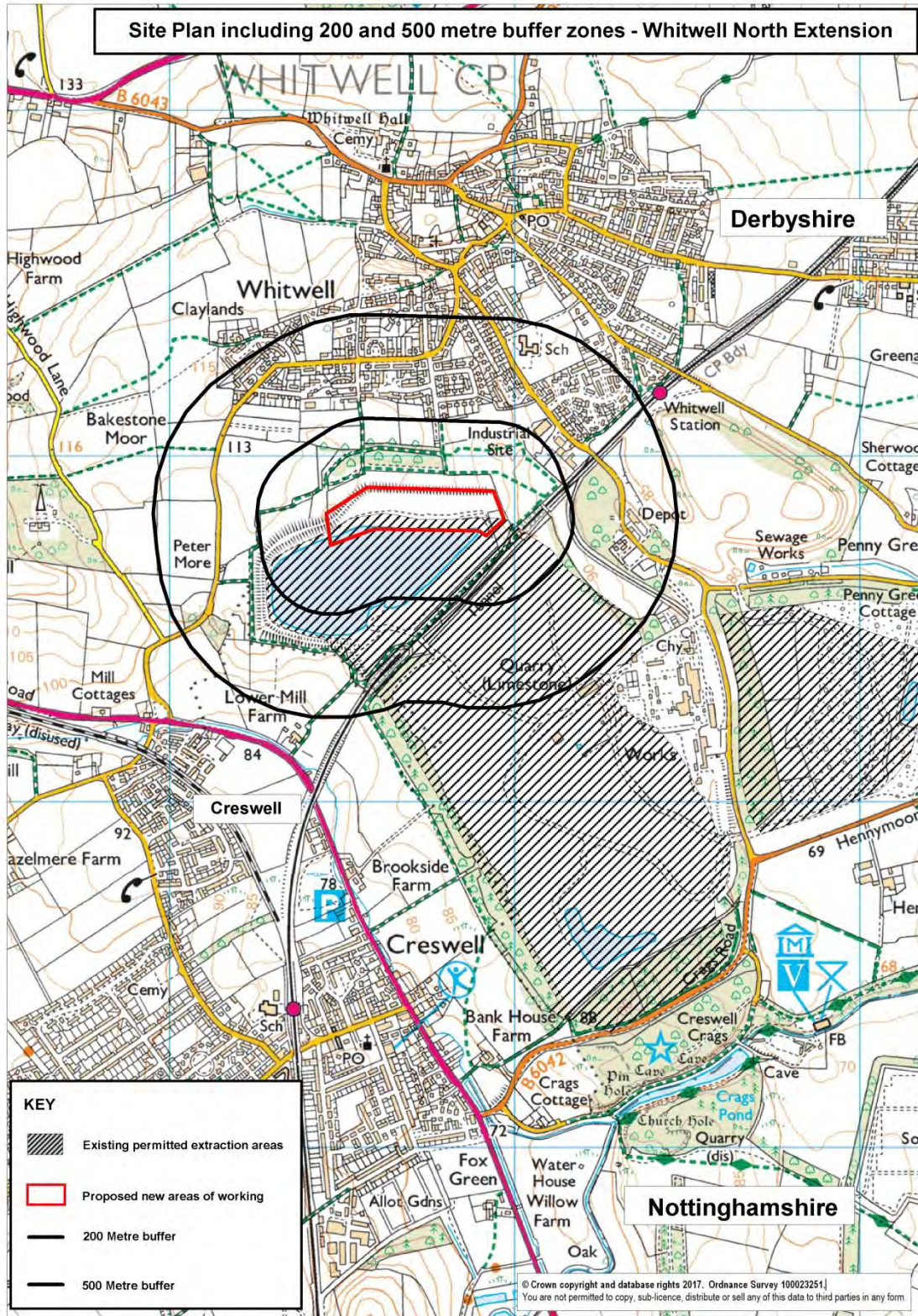
Map 8: Heritage Assets

Map 9: Predictive Agricultural Land Classification

Map1: Site Plan including resource information

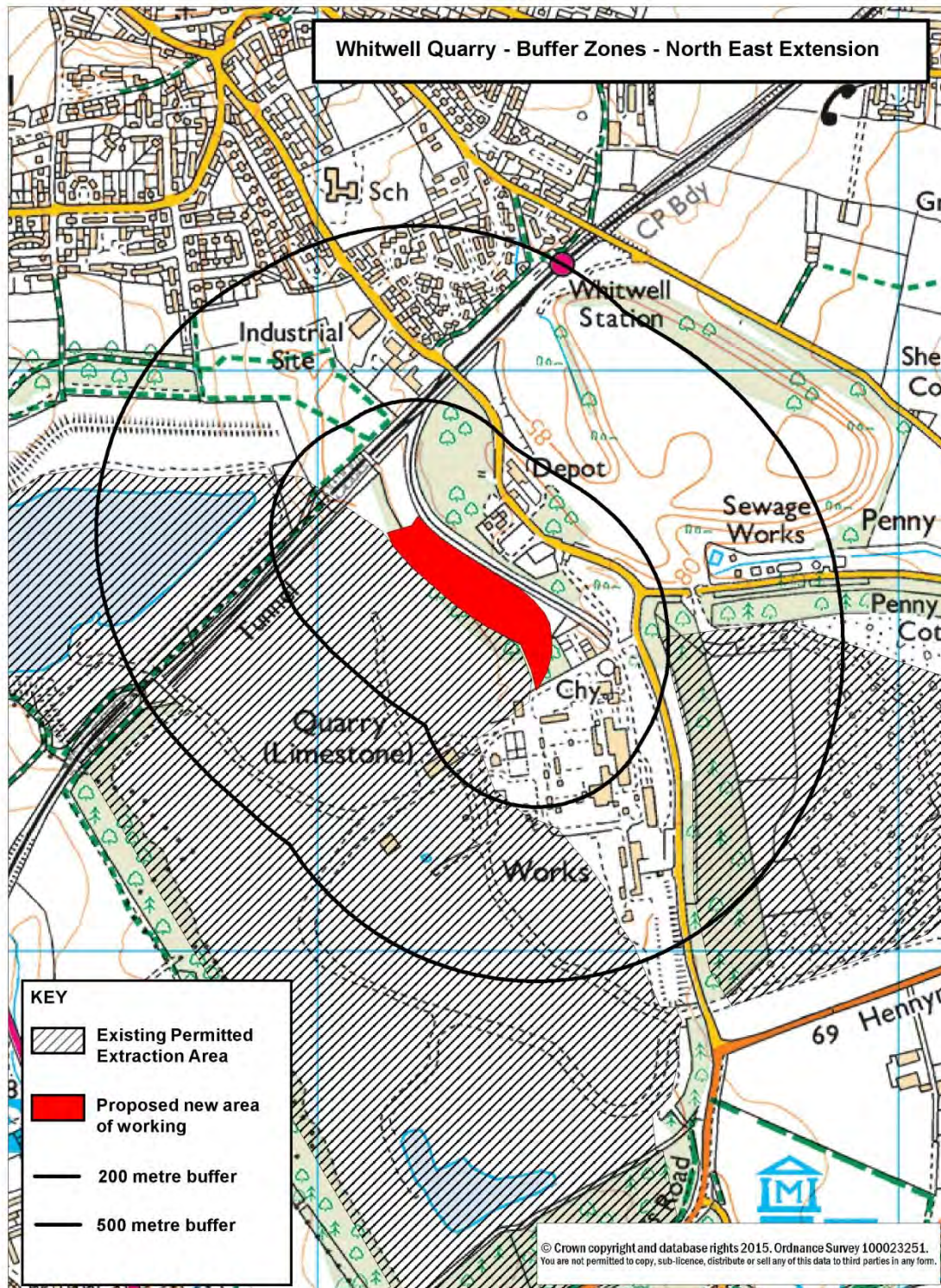


Map 2a: Site Plan including 200 and 500 metre buffer zones – North Extension

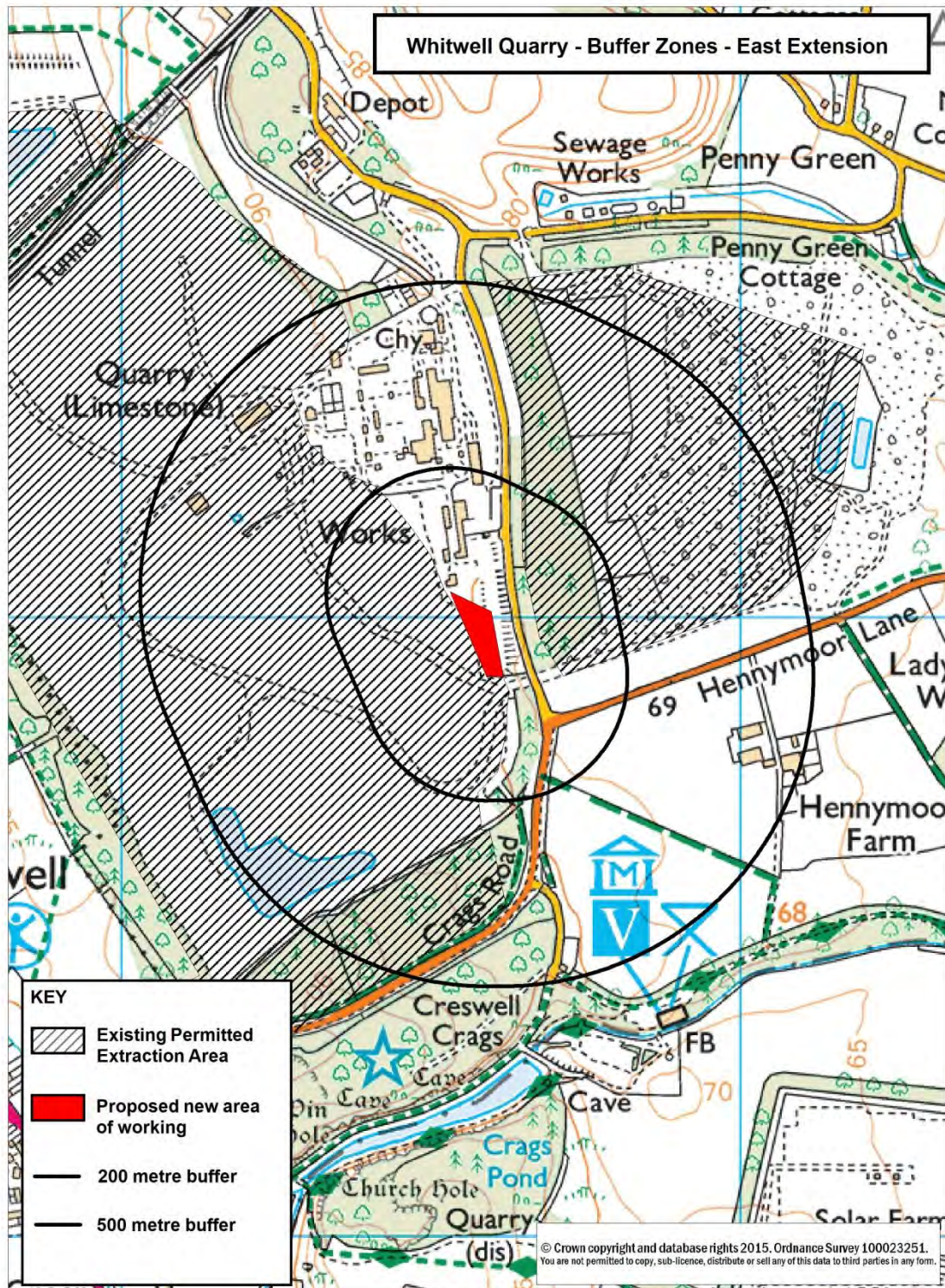


Reproduced from the Ordnance Survey mapping with the permission of the Controller of Her Majesty's Stationery Office. (C) Crown Copyright. Unauthorised reproduction infringes Crown Copyright and may lead to prosecution or civil proceedings.

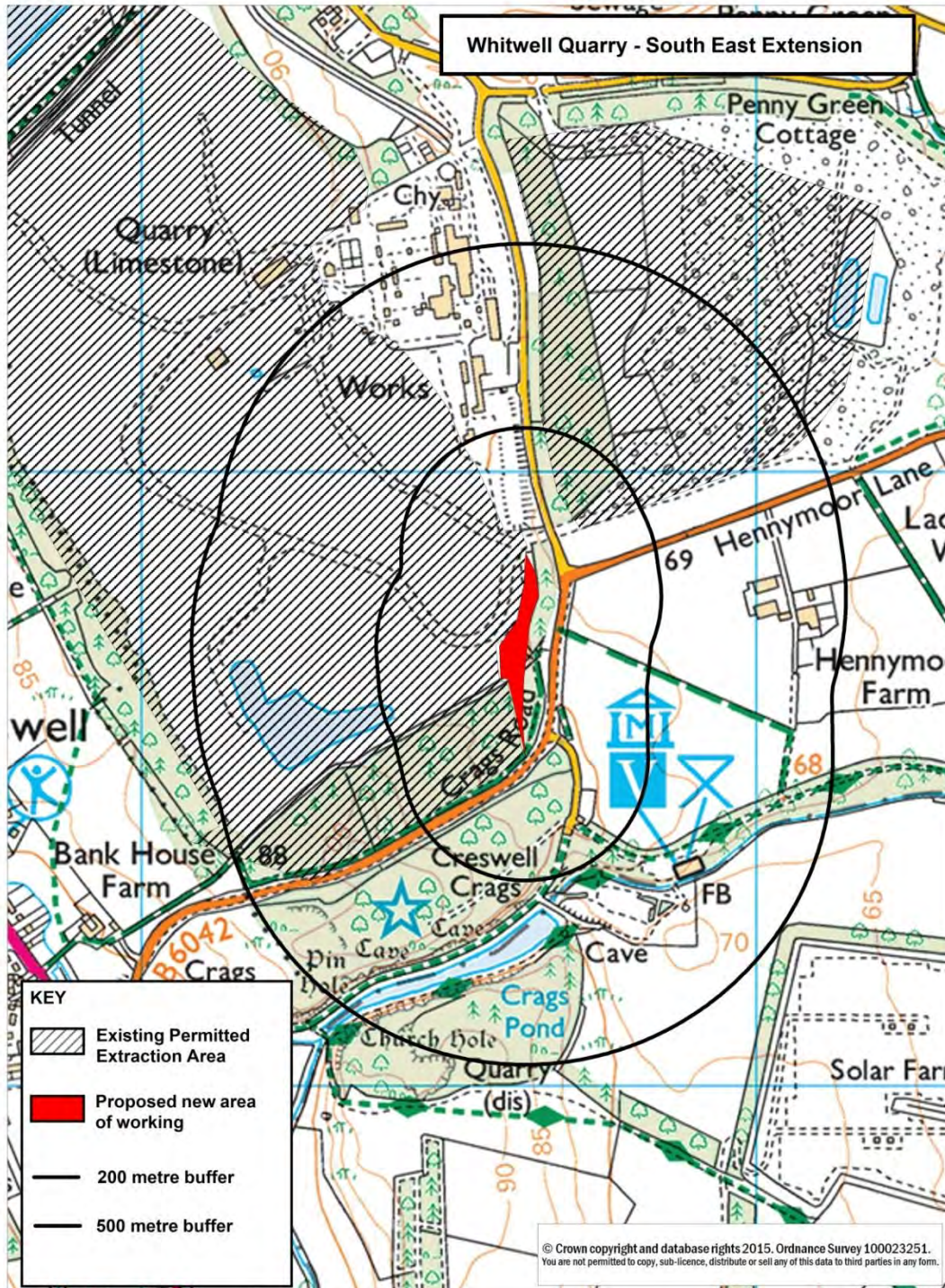
Map 2b: Site Plan including 200 and 500 metre buffer zones – North East Extension



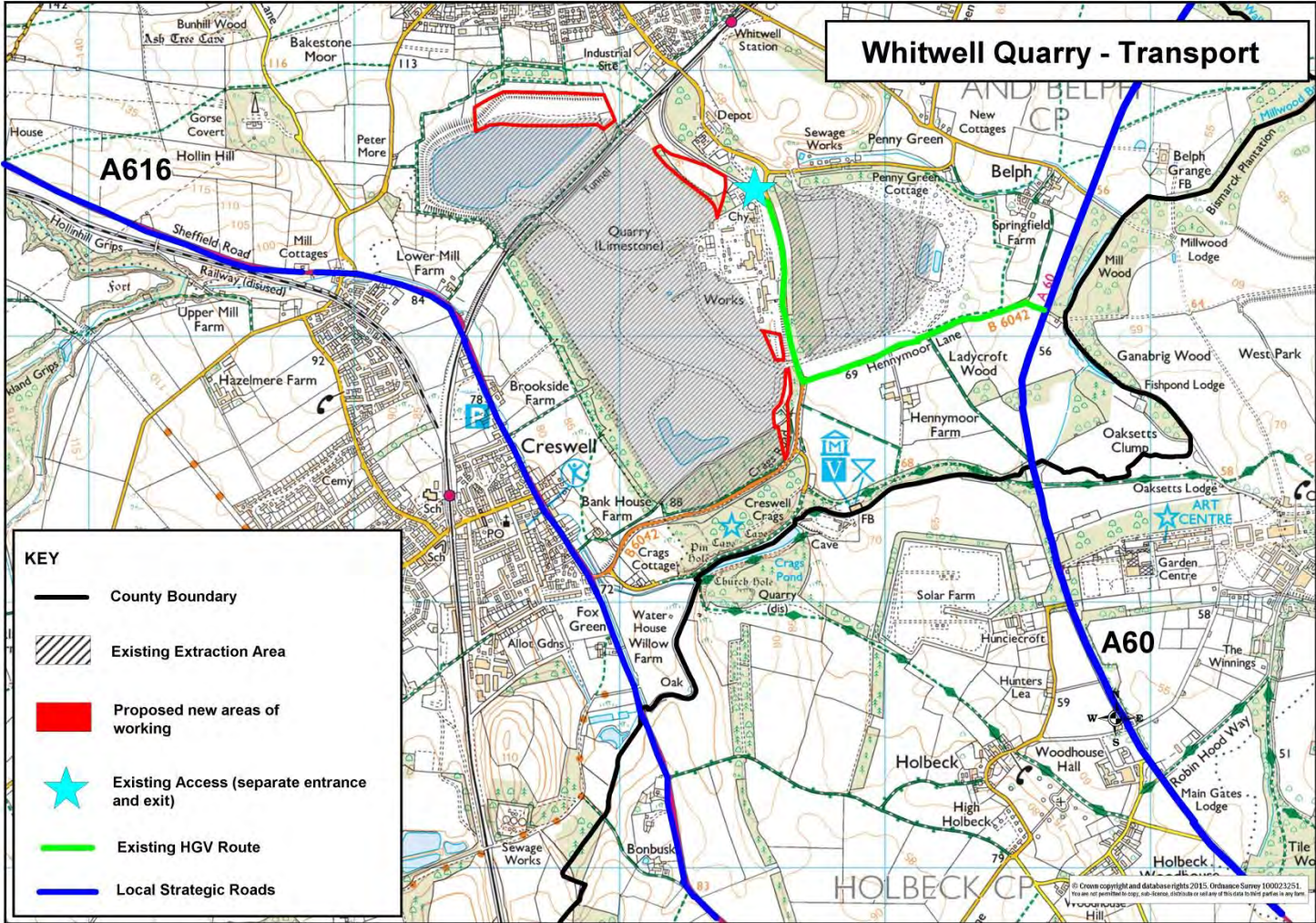
Map 2c: Site Plan including 200 and 500 metre buffer zones – East Extension



Map 2d: Site Plan including 200 and 500 metre buffer zones – South East Extension

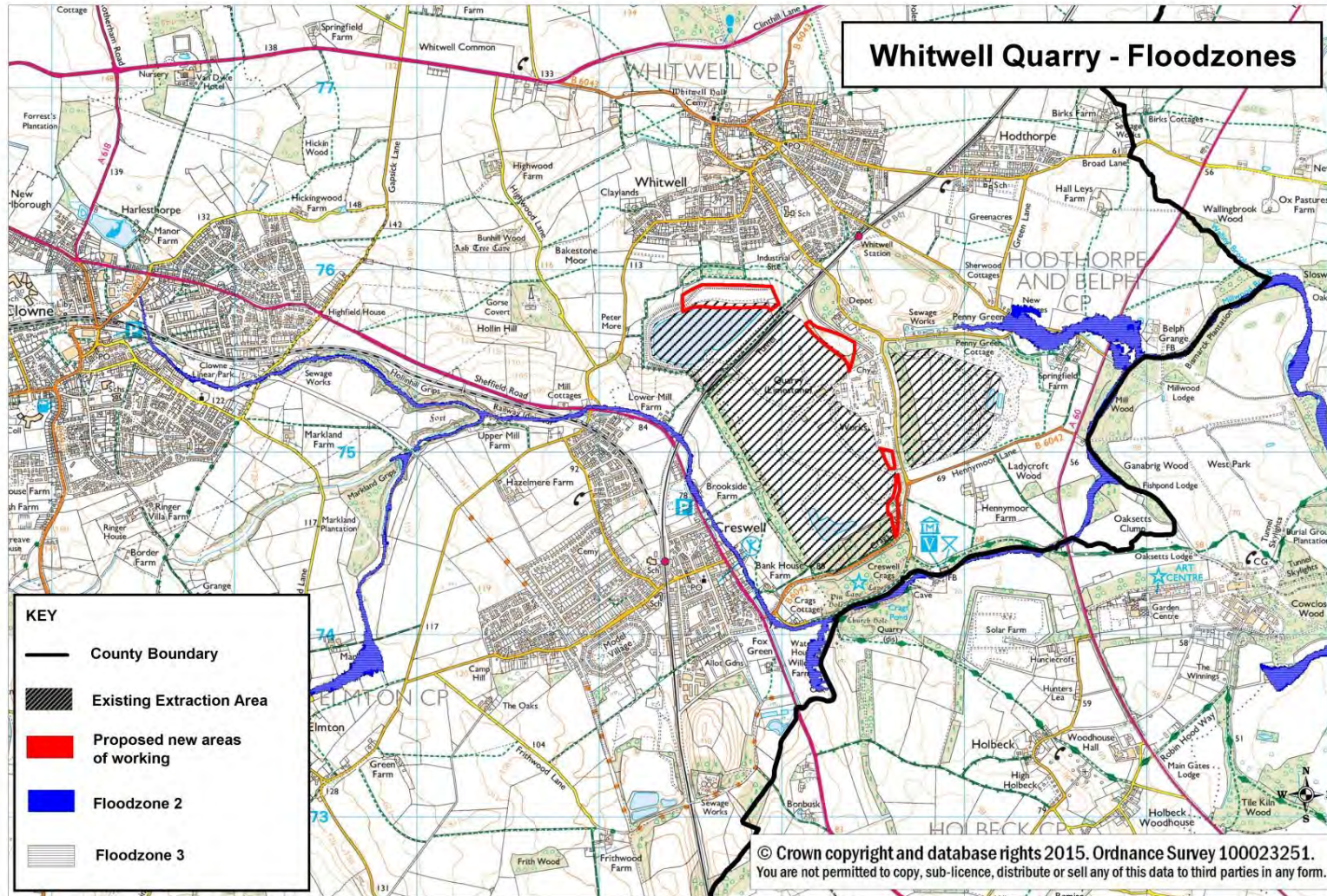


Map 3: Transport



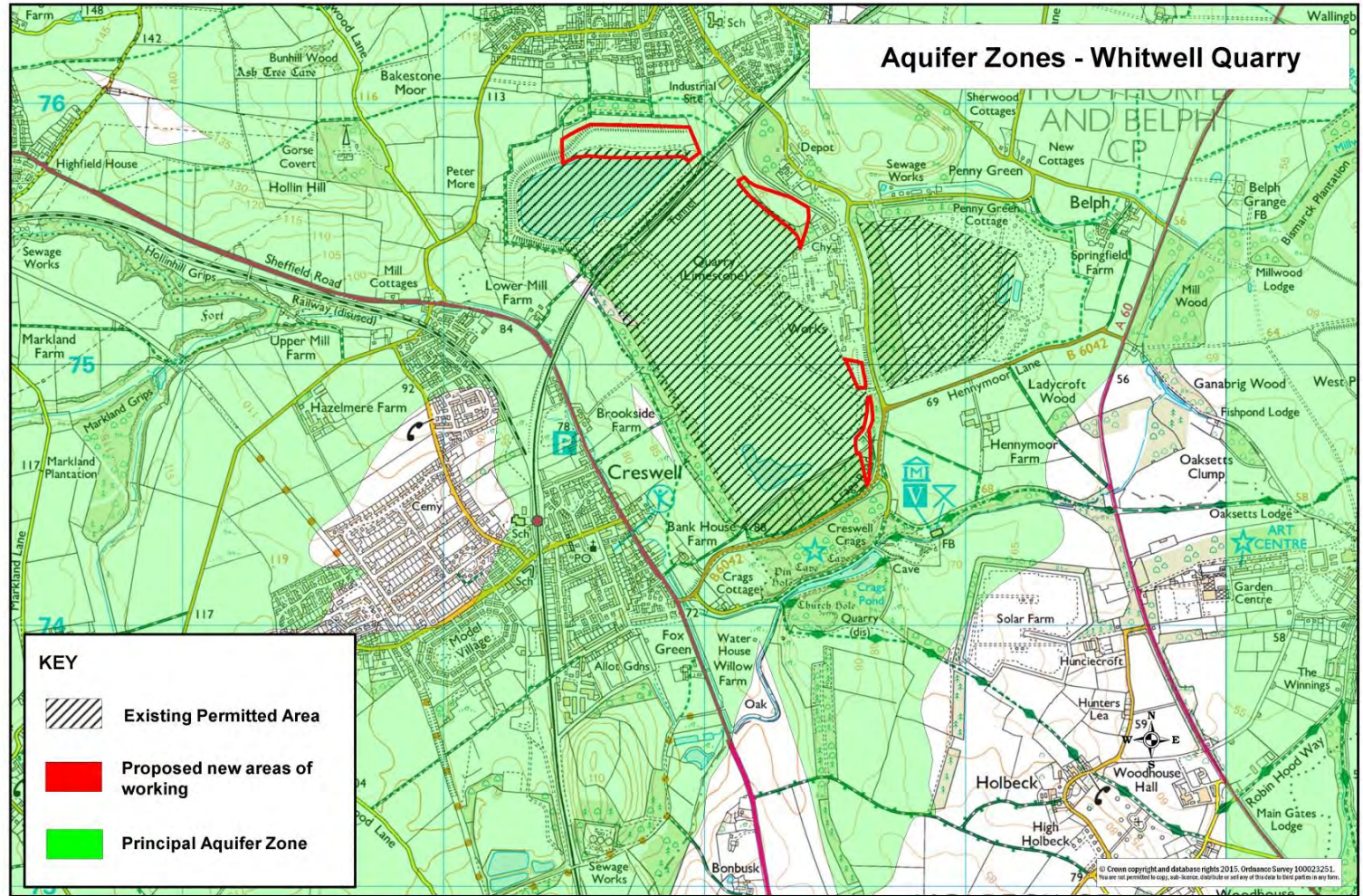
Reproduced from the Ordnance Survey mapping with the permission of the Controller of Her Majesty's Stationery Office. (C) Crown Copyright. Unauthorised reproduction infringes Crown Copyright and may lead to prosecution or civil proceedings.

Map 4: Flood Zones and Groundwater Source Protection Zones



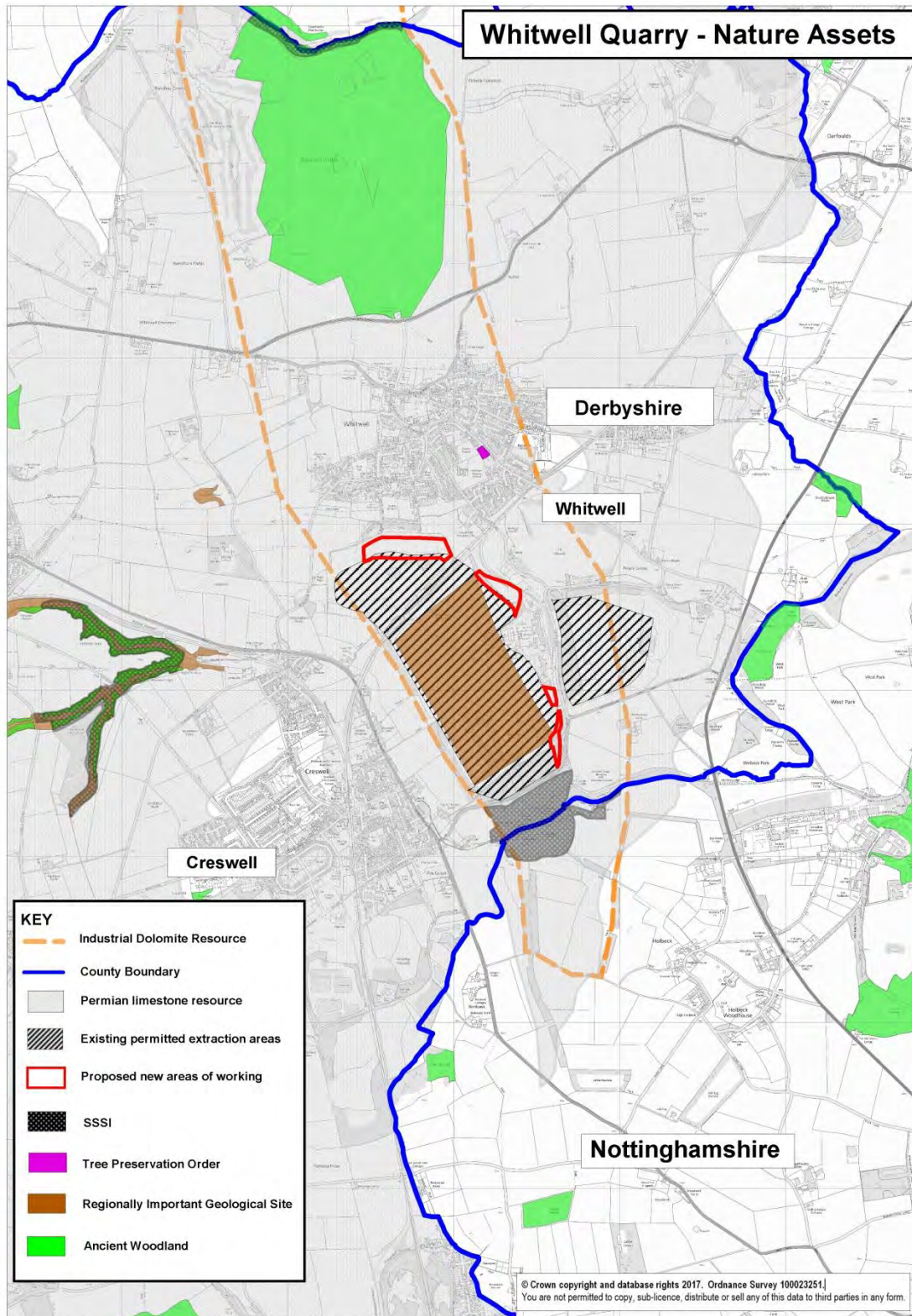
Reproduced from the Ordnance Survey mapping with the permission of the Controller of Her Majesty's Stationery Office. (C) Crown Copyright. Unauthorised reproduction infringes Crown Copyright and may lead to prosecution or civil proceedings.

Map 5: Important Aquifer Zones



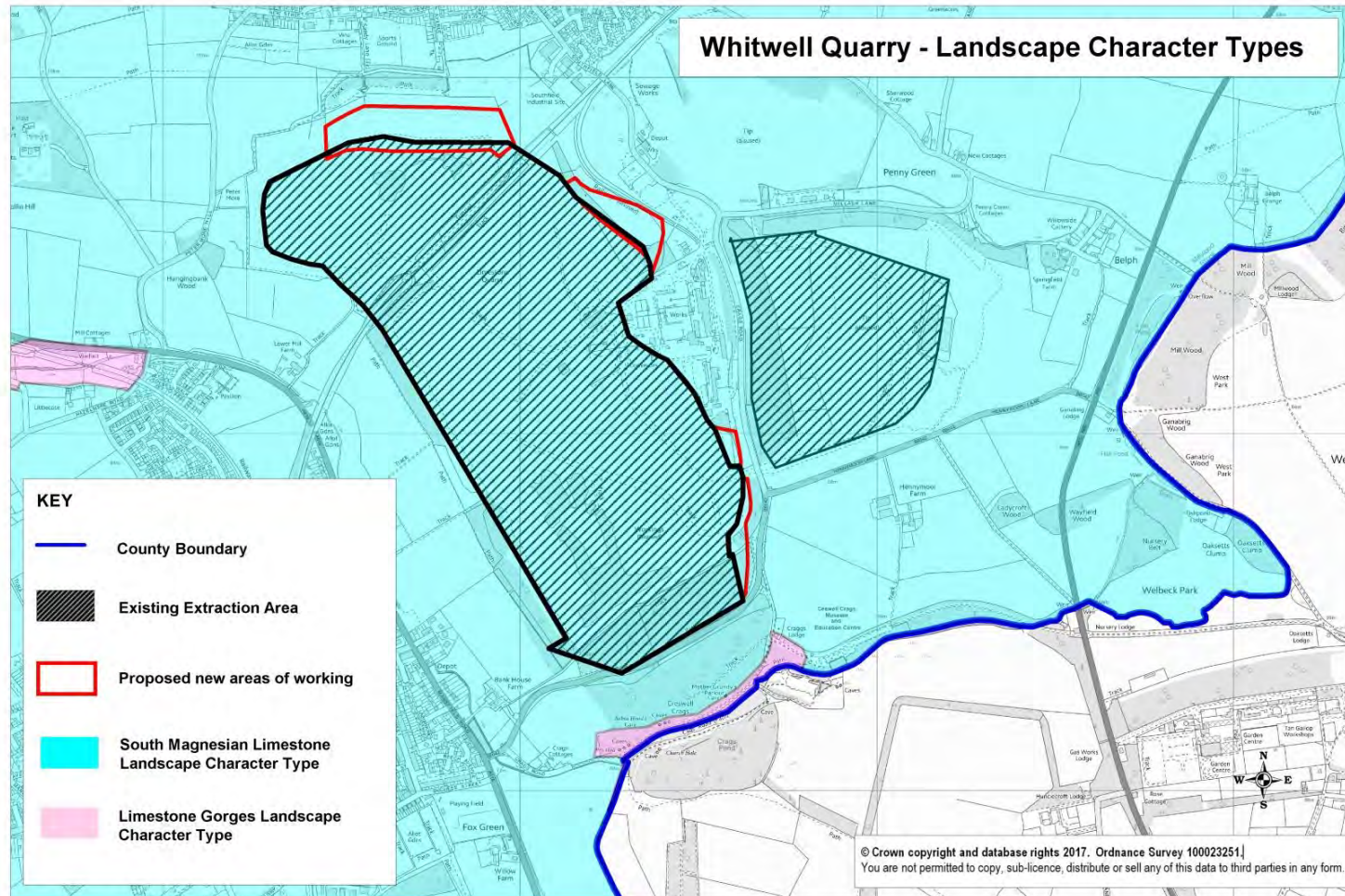
Reproduced from the Ordnance Survey mapping with the permission of the Controller of Her Majesty's Stationery Office. (C) Crown Copyright. Unauthorised reproduction infringes Crown Copyright and may lead to prosecution or civil proceedings.

Map 6: Ecological Assets

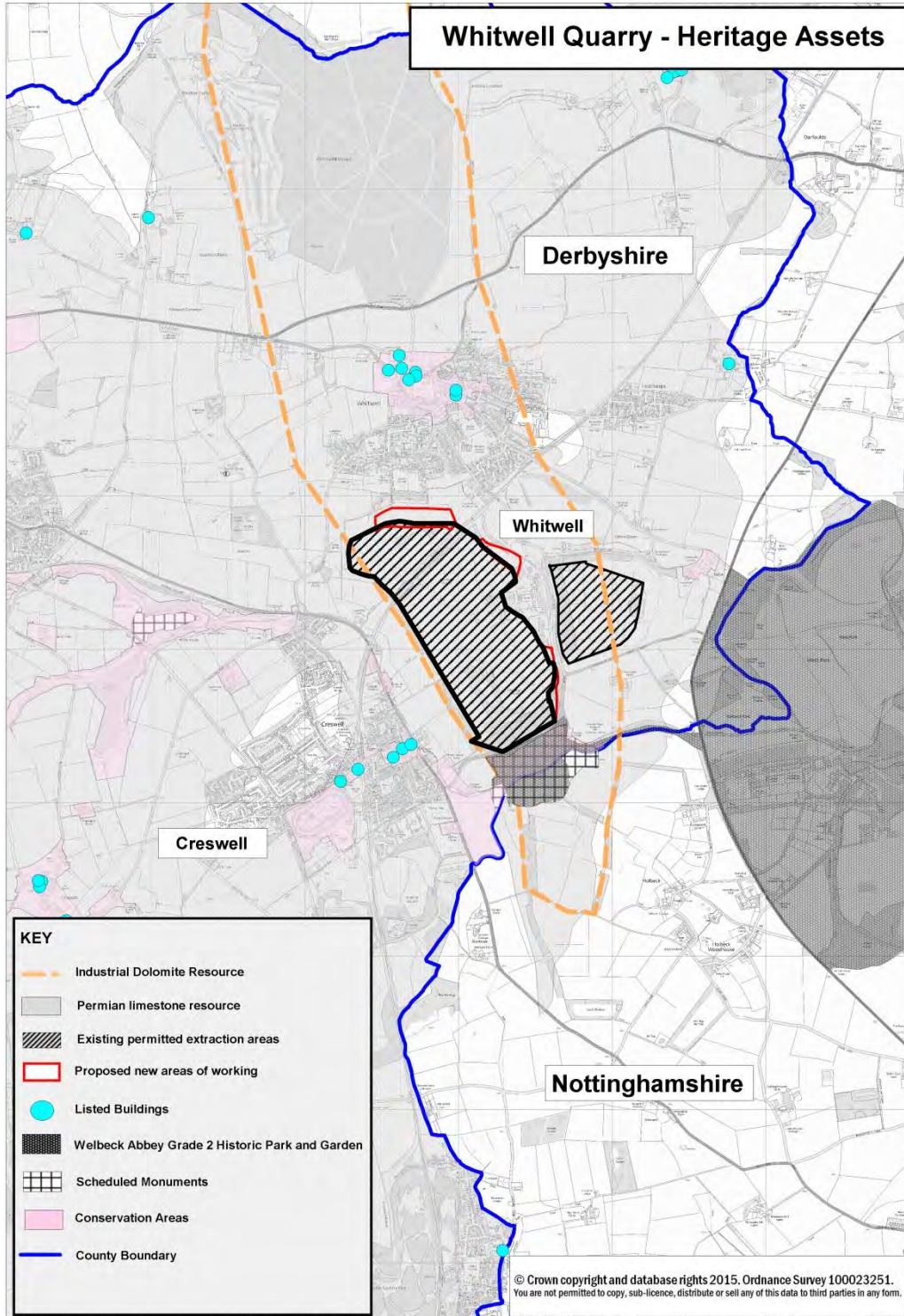


Reproduced from the Ordnance Survey mapping with the permission of the Controller of Her Majesty's Stationery Office. (C) Crown Copyright. Unauthorised reproduction infringes Crown Copyright and may lead to prosecution or civil proceedings.

Map 7: Landscape Character Areas

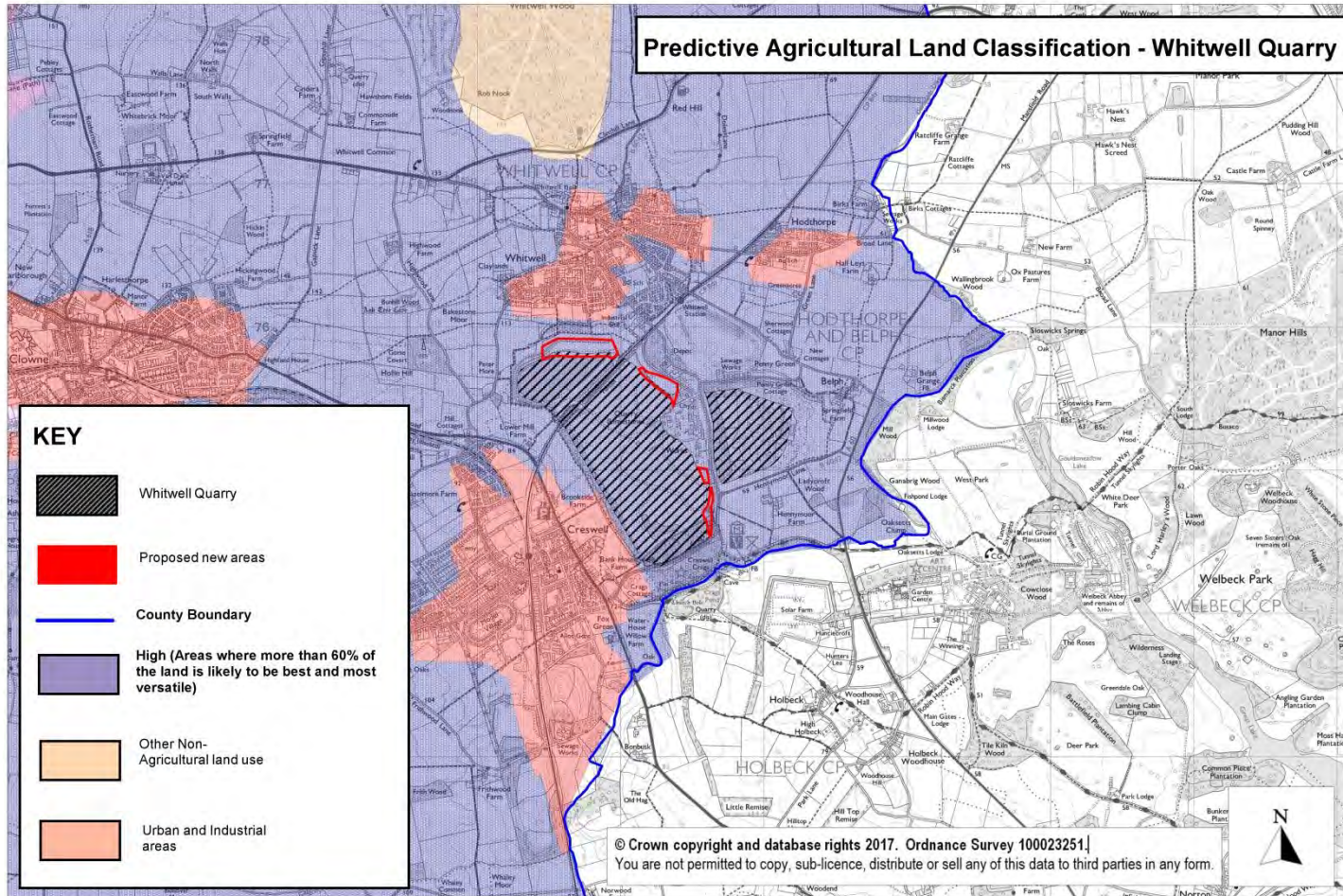


Map 8: Heritage Assets



Reproduced from the Ordnance Survey mapping with the permission of the Controller of Her Majesty's Stationery Office. (C) Crown Copyright. Unauthorised reproduction infringes Crown Copyright and may lead to prosecution or civil proceedings.

Map 9: Predictive Agricultural Land Classification



Reproduced from the Ordnance Survey mapping with the permission of the Controller of Her Majesty's Stationery Office. (C) Crown Copyright. Unauthorised reproduction infringes Crown Copyright and may lead to prosecution or civil proceedings.