

# DERBYSHIRE AND DERBY MINERALS LOCAL PLAN

## SITE ASSESSMENT: MAPS ASHWOOD DALE

DECEMBER 2016

The following Maps are for use in conjunction with the Site Assessment Sheet

Map1: Site Plan including resource information

Map 2: Site Plan including 200 and 500 metre buffer zones

Map 3: Transport

Map 4: Flood Zones and Groundwater Source Protection Zones

Map 5: Important Aquifer Zones

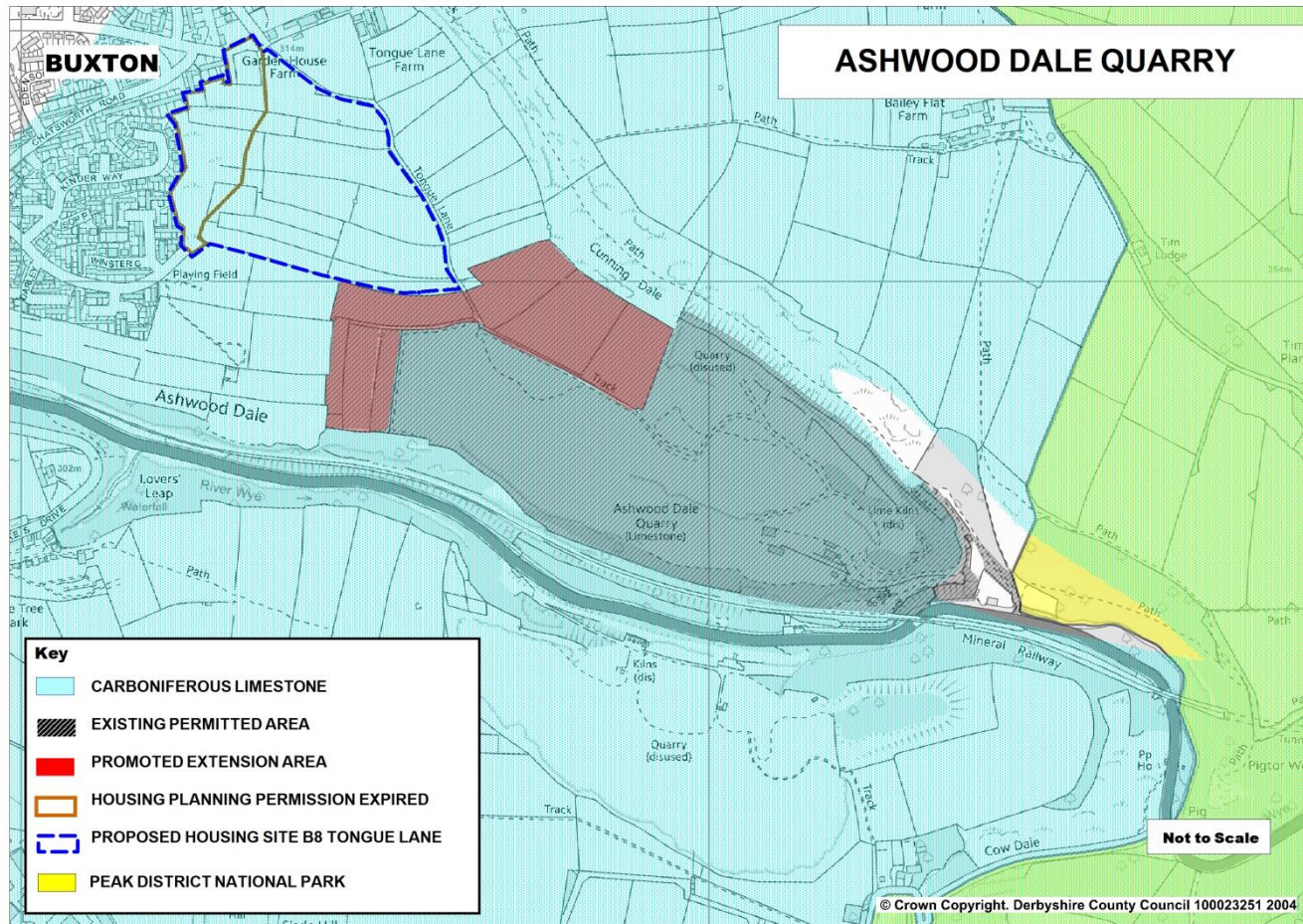
Map 6: Ecological Assets

Map 7: Landscape Character Areas

Map 8: Heritage Assets

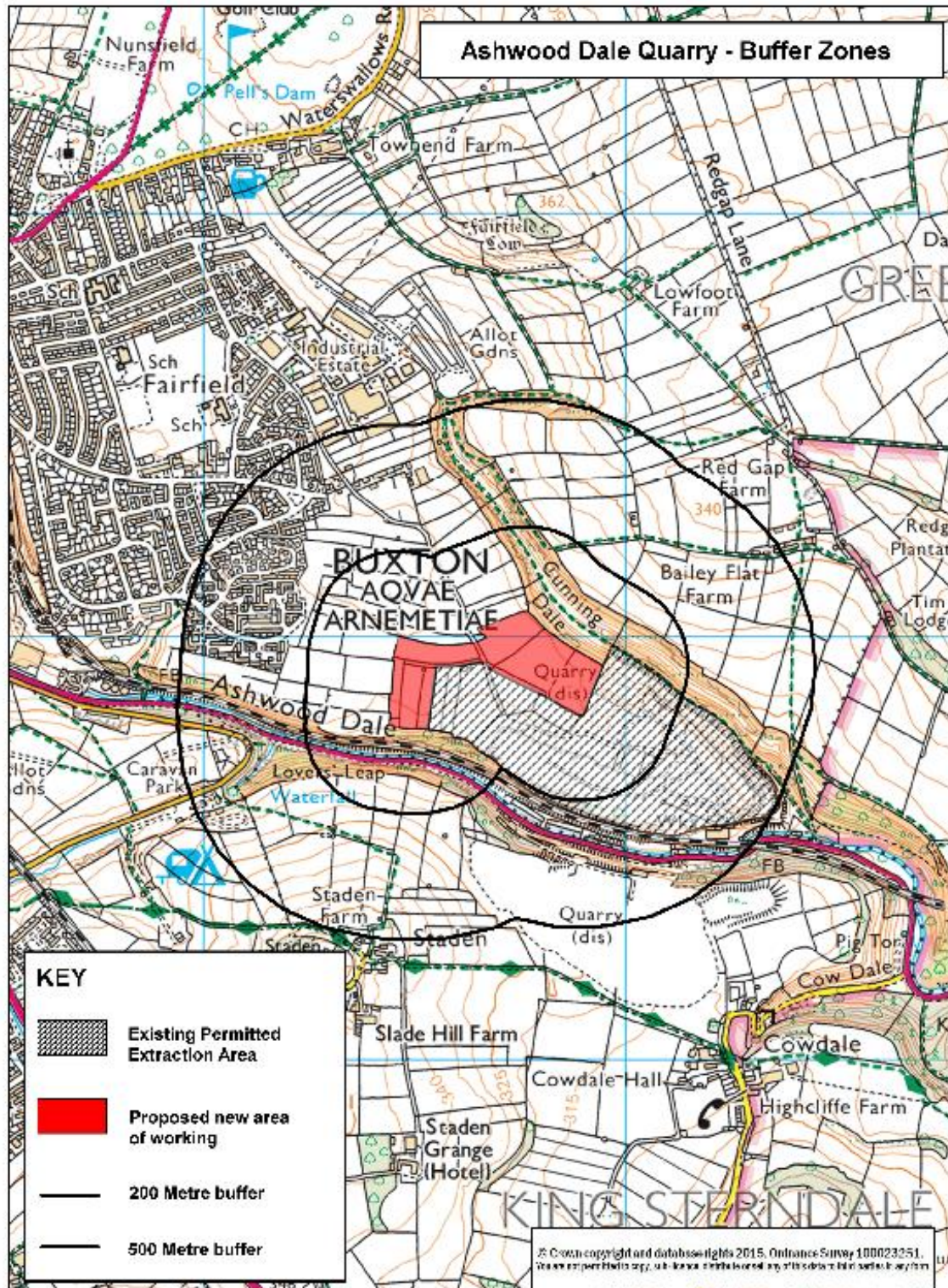
Map 9: Predictive Agricultural Land Classification

Map1: Site Plan including resource information





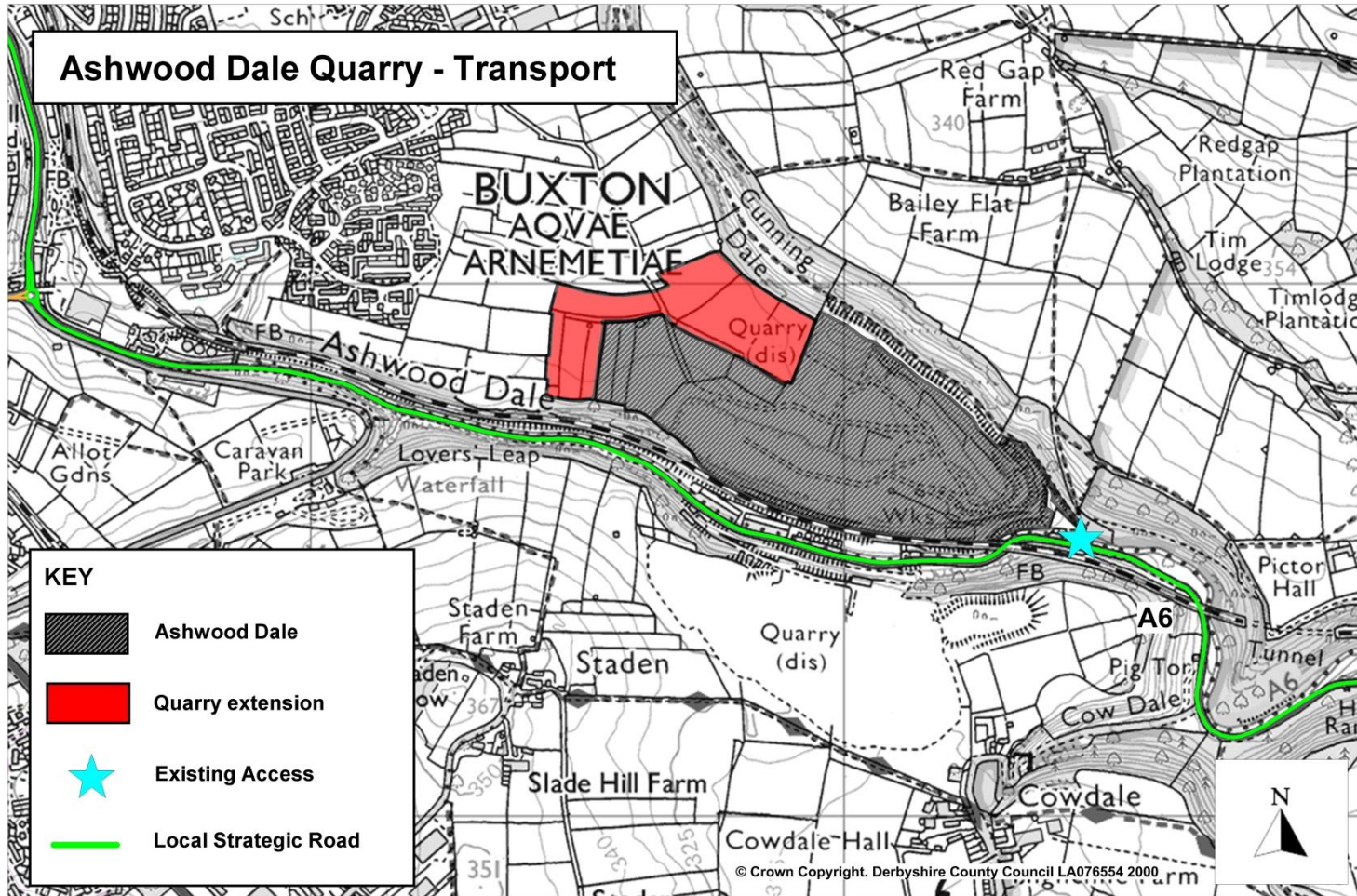
Map 2: Site Plan including 200 and 500 metre buffer zones



Reproduced from the Ordnance Survey mapping with the permission of the Controller of Her Majesty's Stationery Office. © Crown Copyright. Unauthorised reproduction infringes Crown Copyright and may lead to prosecution or civil proceedings.



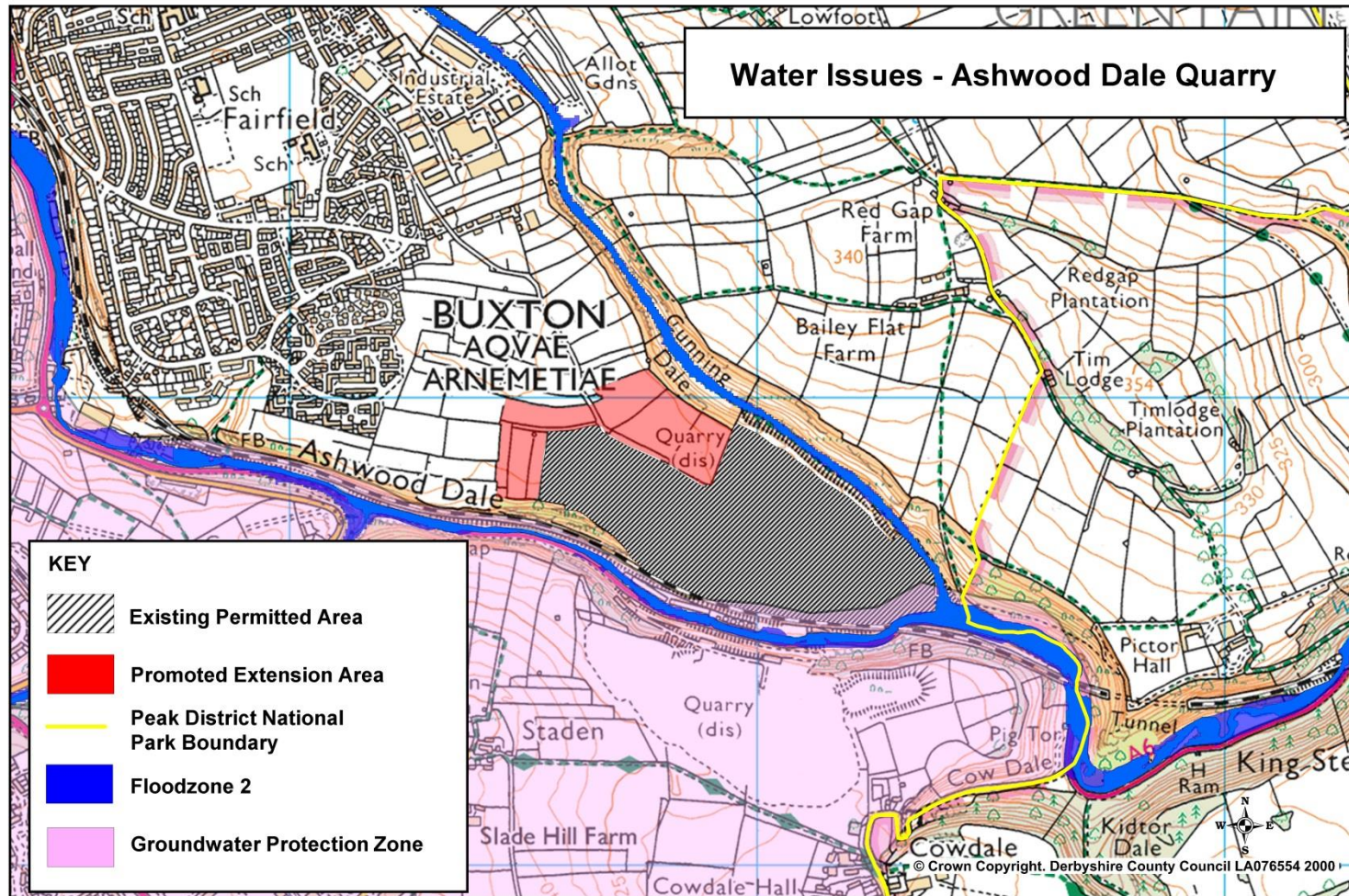
Map 3: Transport



Reproduced from the Ordnance Survey mapping with the permission of the Controller of Her Majesty's Stationery Office. (C) Crown Copyright. Unauthorised reproduction infringes Crown Copyright and may lead to prosecution or civil proceedings.

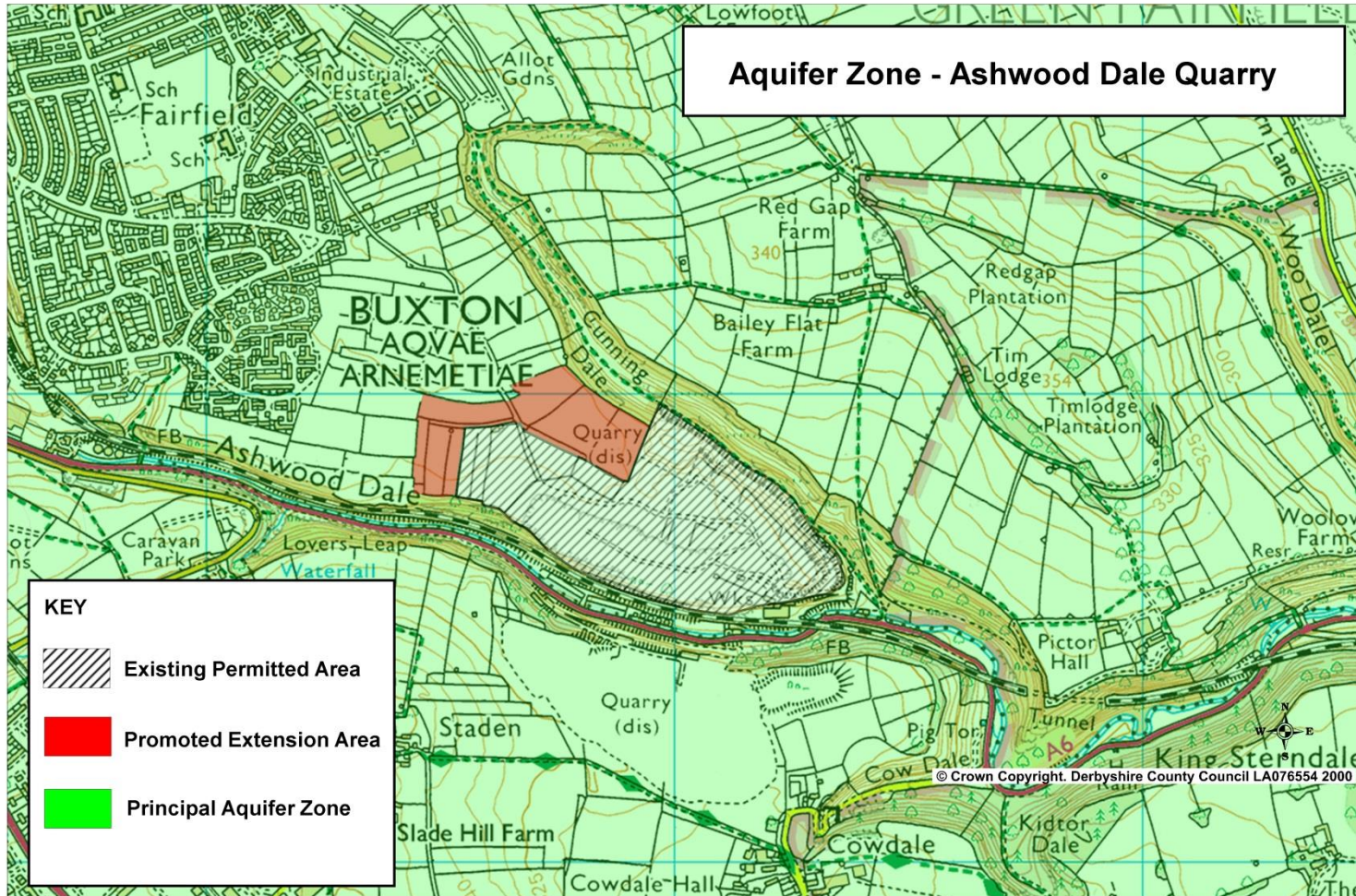


Map 4: Flood Zones and Groundwater Source Protection



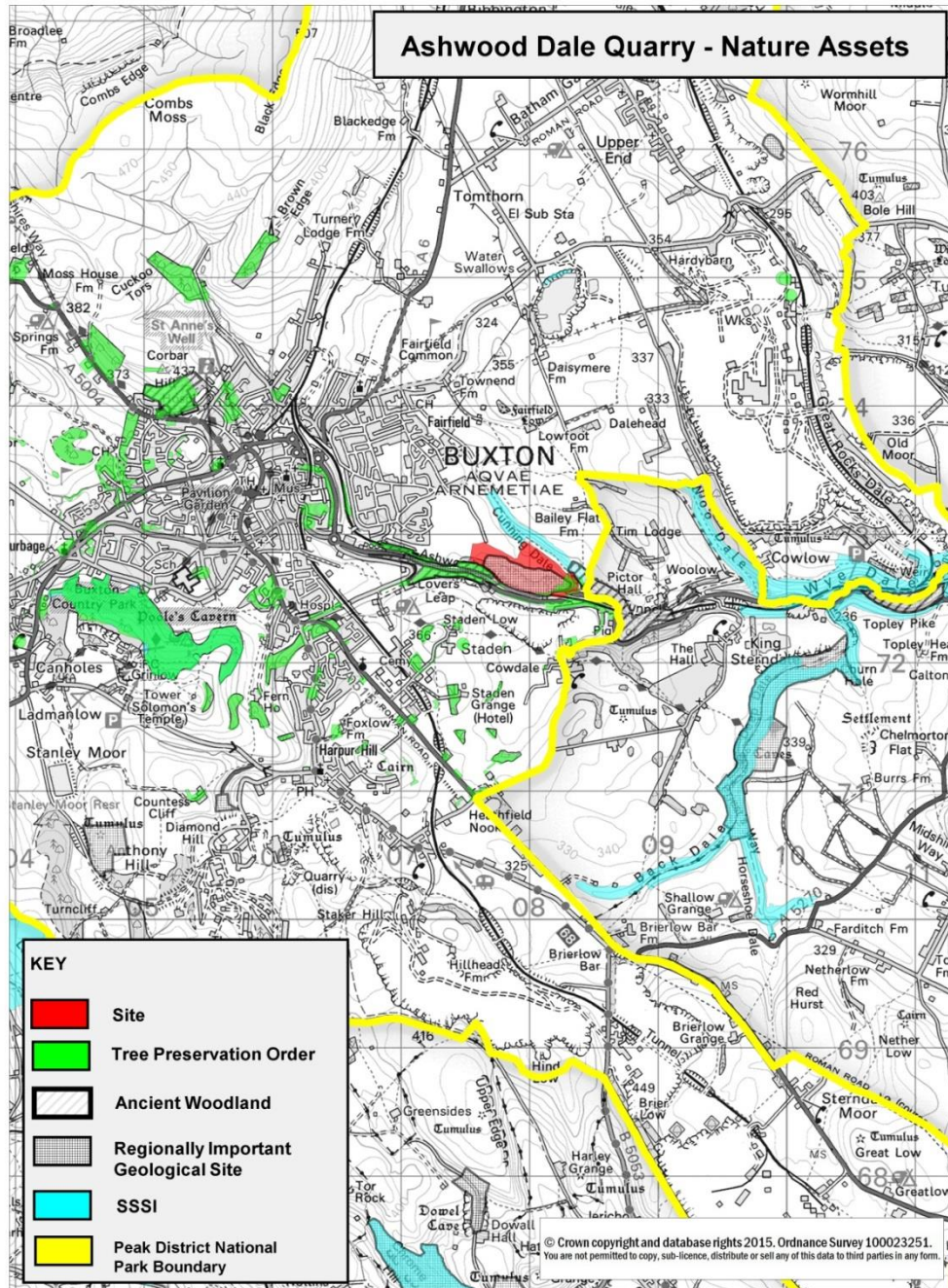


Map 5: Important Aquifer Zones





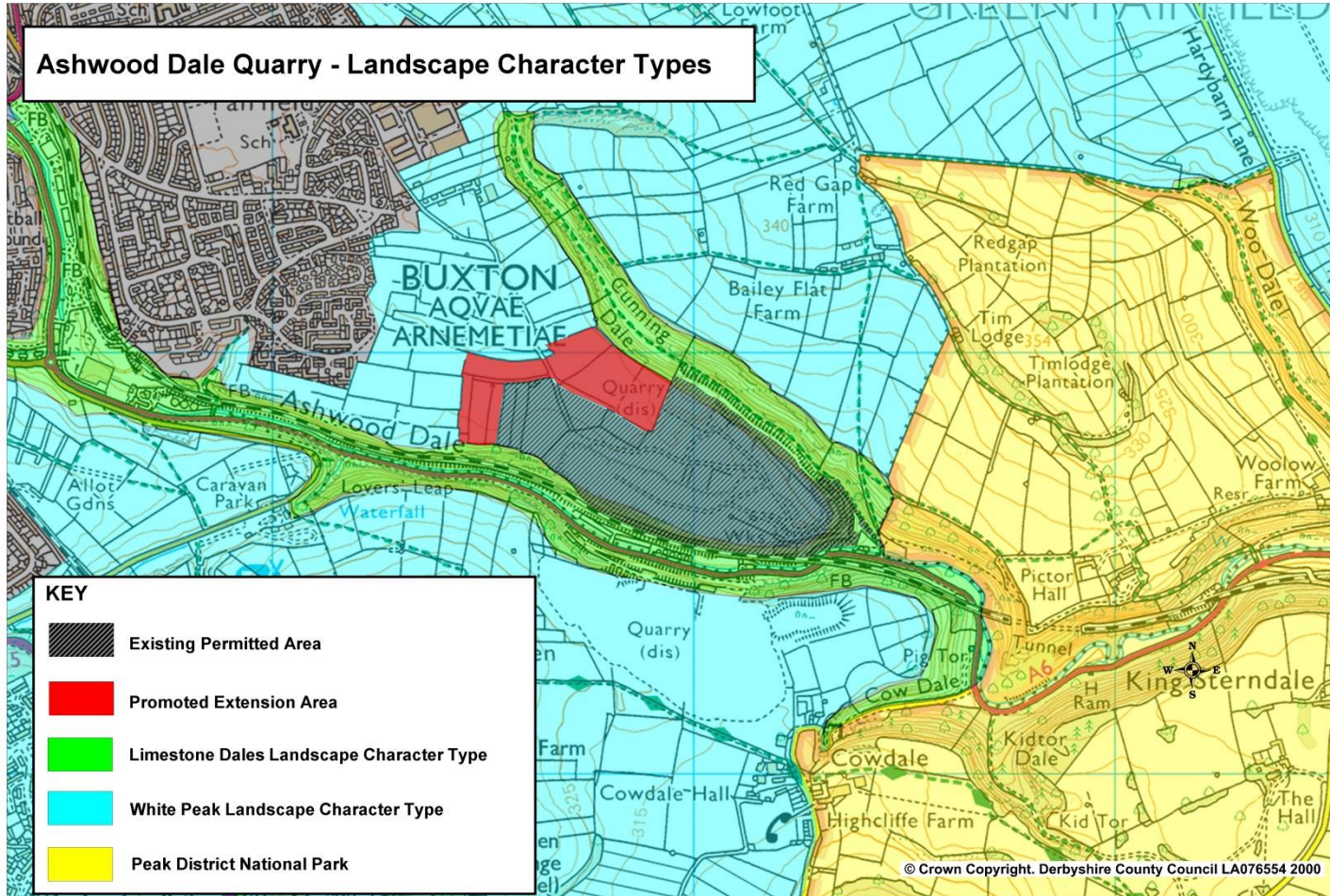
Map 6: Ecological Assets



Reproduced from the Ordnance Survey mapping with the permission of the Controller of Her Majesty's Stationery Office. (C) Crown Copyright. Unauthorised reproduction infringes Crown Copyright and may lead to prosecution or civil proceedings.



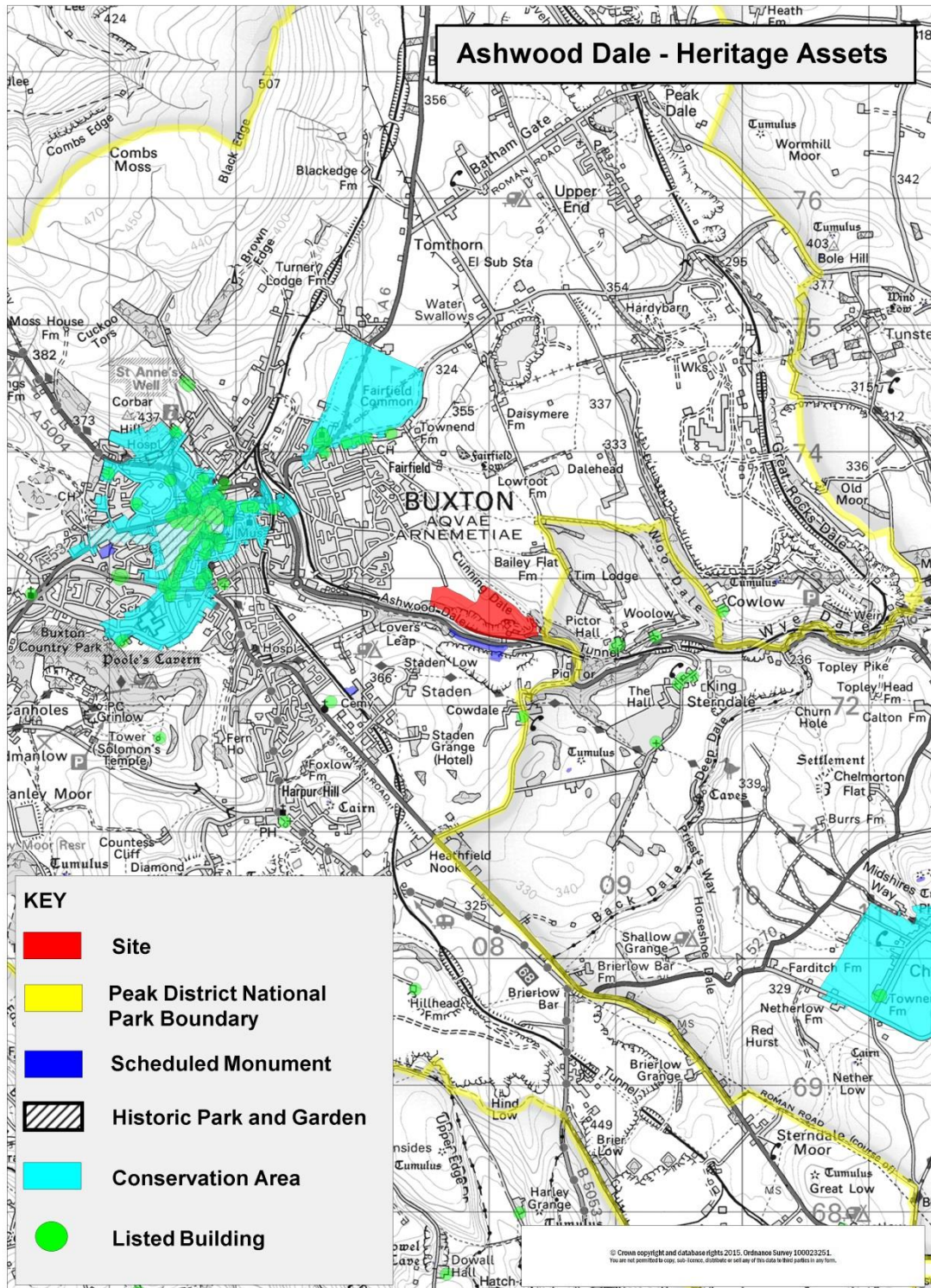
Map 7: Landscape Character Areas



Reproduced from the Ordnance Survey mapping with the permission of the Controller of Her Majesty's Stationery Office. (C) Crown Copyright. Unauthorised reproduction infringes Crown Copyright and may lead to prosecution or civil proceedings.

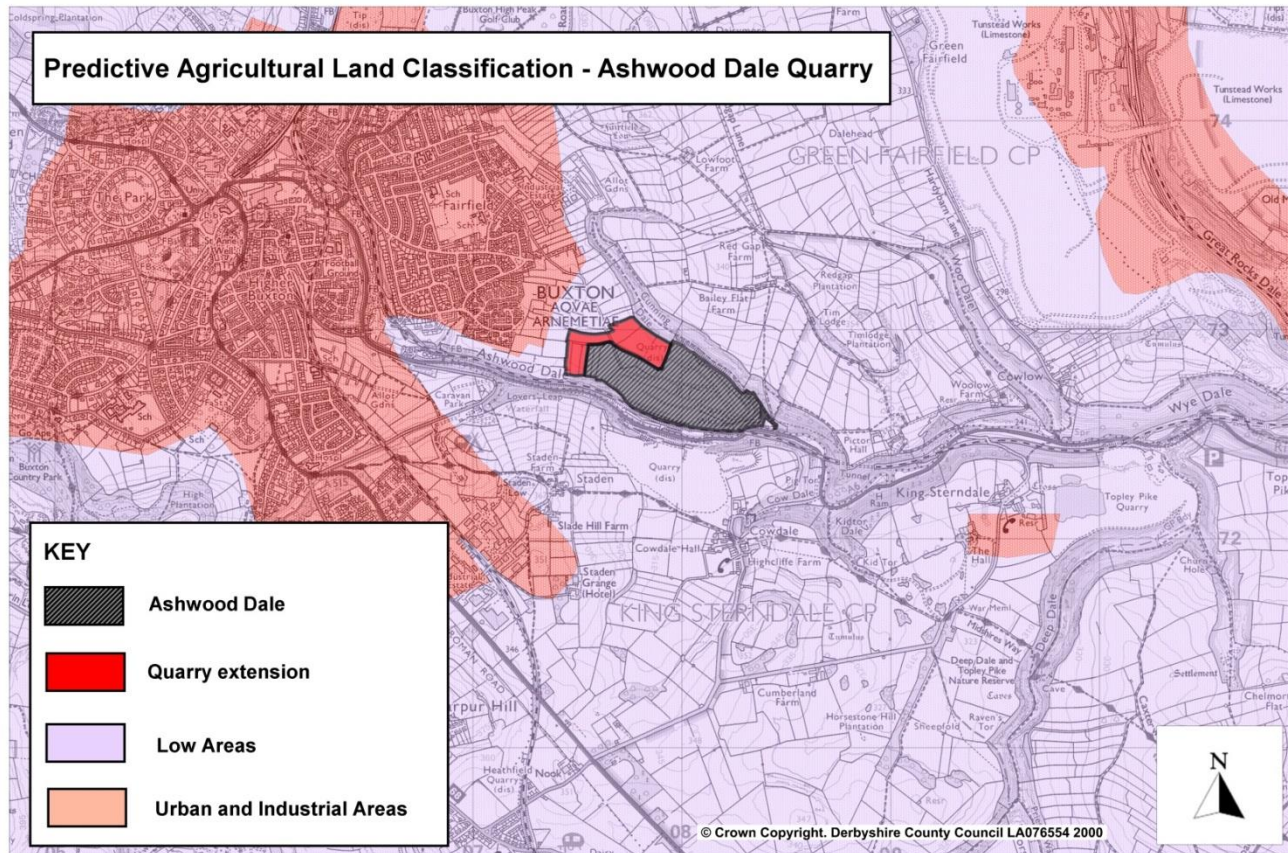


Map 8: Heritage Assets





## Map 9: Predictive Agricultural Land Classification



Reproduced from the Ordnance Survey mapping with the permission of the Controller of Her Majesty's Stationery Office. (C) Crown Copyright. Unauthorised reproduction infringes Crown Copyright and may lead to prosecution or civil proceedings.