

DERBYSHIRE AND DERBY MINERALS LOCAL PLAN

SUMMARY OF PAPERS

MAY 2016

Towards a Minerals Local Plan – Consultation

This rolling consultation began in March 2015. It represents the next stage in engaging the wider community of Derbyshire and Derby in developing the vision, objectives, strategies and policies of the Minerals Local Plan (MLP). The purpose is to invite comments and suggestions on elements of the Plan through a series of consultation strategy papers and their respective supporting papers, where relevant. A further series of papers have been published in April 2016.

Consultation Papers

Whilst the Overarching and General Issues papers are relevant to everyone not all of the Area Based Issues and Mineral Specific Issues papers will be relevant to people living in different areas of the County as the mineral resource is spread unevenly. Please see the map for the minerals relevant to your area.

Overarching Issues

[Foreword](#) , [Flyer](#) and [Plan Context](#)

These supporting papers set out the context in which the Plan is being prepared

Spatial Portrait – This [supporting paper](#), updated in the light of comments received, provides an overview of Derbyshire and Derby in terms of its population, transport system, economy, environment etc. It also sets out the background information regarding minerals in the Plan area. This information provides the foundation for developing the establishing the key issues that will need to be addressed in the vision and objectives of the Plan.

Vision and Objectives – This [strategy paper](#) sets out an emerging draft Vision and Objectives. The vision sets out what the Minerals Local Plan will seek to achieve by 2030 and the objectives are the goals which will help to deliver the vision. Further information is available in a [supporting paper](#).

Sustainability Principles – This [strategy paper](#) sets out the strategic principles, both national and more locally specific, to which proposals for minerals development in Derbyshire and Derby will be expected to adhere. National policy identifies a number of strategic principles which mineral development should meet. Responses from consultations on the MLP have also identified a number of principles, which are of particular relevance and importance to Derbyshire and Derby. By ensuring that mineral development meets these principles, the vision and objectives of the Plan will be delivered. The paper concludes by setting out the spatial principles for the provision of each mineral.

Duty to Co-operate – In planning for minerals, mineral planning authorities, local planning authorities and other public bodies are required to co-operate on strategic cross border matters. This [supporting paper](#) sets out the Strategic Cross Border Issues and the Stakeholders that have been identified so far in preparing the Plan.

Mineral Issues– This [supporting paper](#) examines the frequently occurring concerns that the public raise when minerals developments are proposed.

General Issues

Climate Change - This [supporting paper](#), updated in the light of earlier comments received, explores how mineral development in Derbyshire and Derby impacts on climate change and how it can also provide opportunities to help reduce the impacts of, and strengthen resilience to, climate change and to make adjustments and adaptations to natural and human systems in response to the actual or expected impacts of climate change.

Cumulative Impacts – This [strategy paper](#) focuses on the cumulative impacts in relation to new and extended mineral extraction developments and similar impacts from new and extended waste management facilities. It examines what cumulative impacts are and how they can be measured. It summarises the industrial history of the Plan area and why cumulative impacts are such a significant issue for Derbyshire and Derby. It highlights Government policy on cumulative impacts and reports on the main messages from previous consultation exercises. It presents a number of potential options for the approach of the new Minerals (and Waste) Local Plans to the use of cumulative impact assessments for new and extended minerals (and waste) developments. Further information is available in a [supporting paper](#).

Minerals Local Plan Policies – This Paper reflects on the issues raised in all the other individual consultation papers to focus attention on those matters which will require policies in the MLP to help deliver its objectives and strategic principles. This will incorporate policies to reflect Government guidance and others to reflect the particular characteristics and circumstances of the Plan area. The suggested range of policies will include ones to set out the strategic approach of the Plan, policies concerning the provision for the extraction of identified mineral and policies to set the criteria for the assessment and determination of development proposals. The detailed wording of policies will be the subject of a later consultation exercise.

Implementation and Monitoring – This Paper looks at how, when and where the vision, objectives and strategy will be delivered and how the effectiveness of the MLP will be monitored. Suggestions are made for mechanisms to deliver the MLP, collecting data and setting up and maintaining a framework for monitoring how well the MLP is working.

[Legislative Background](#) – This Paper looks at the European, national and local legislation that influences the production of the Plan.

[Restoration](#) – This [strategy paper](#) looks at the development of policy approaches for the restoration and after-use of mineral sites, taking forward the messages from previous consultations. This will include the next stages in the development of a strategy for the [Trent Valley Strategy](#) which has attracted general support in previous consultations. [Restoration of Carboniferous Limestone quarries](#) – this [strategy paper](#) considers widening the concept of preparing a restoration Strategy for the A515 Quarries to developing a restoration strategy for all Carboniferous Limestone quarries.

[Safeguarding Mineral Resources](#) – This [strategy paper](#) looks at how the MLP might safeguard the mineral resources in Derbyshire and Derby. It is important to safeguard mineral resources to ensure only sustainable minerals development occurs. Issues are identified and a number of questions/options put forward. Further information is available in a [supporting paper](#).

[Safeguarding Minerals Infrastructure](#) – This [supporting paper](#) looks at how the MLP might safeguard the minerals supply and transport infrastructure in Derbyshire and Derby. It is important to safeguard minerals related infrastructure to ensure that the minerals which are produced are supplied to the market in the form required (e.g. concrete, coated road stone) and the potential to transport them in sustainable ways if possible, including by rail, is maintained. Issues are identified and a number of questions/options are put forward.

[Transport](#) – This [strategy paper](#) looks at developing a strategy for transporting minerals over the Plan period. It is important to recognise the important role that the transport strategy has to play not only in delivering sustainable minerals development but also in contributing to wider sustainability and health objectives. Issues are identified and strategy options put forward. Further information is available in a [supporting paper](#).

Area Based Issues

[Reducing Quarrying in the Peak Park](#) – the Peak District National Park Authority (PDNPA) has a policy in its adopted Core Strategy not to allow further new quarries or extensions to existing quarries in the National Park in order to help protect the unique qualities of the landscape. Responses to previous consultations on the MLP indicate support for the development of an approach which would help to reduce quarrying in the Peak District National Park. This [strategy paper](#) sets out how the Councils will continue to cooperate with the PDNPA to help achieve this aim by agreeing to compensate for the reduction in quarrying in the National Park by increasing its apportionment figure for aggregate crushed rock.

River Valleys – This [strategy paper](#) sets out how we have developed, with local communities and other stakeholders, an emerging strategy for the location of future sand and gravel workings, how we expect these sites to be restored in the Trent, Derwent and Lower Dove Valleys in the context of how we envisage the valleys to look in this Plan period and beyond. A [supporting paper](#) describes the methodology used to map environmentally sensitive areas in the Trent Valley.

Mineral Specific Issues

Aggregate Crushed Rock – This [strategy paper](#) explains that aggregate crushed rock from the limestone resource of Derbyshire is a resource of national importance. The Local Aggregate Assessment concludes that there are sufficient permitted reserves of this resource to last well beyond the end of the Plan period. In overall numerical terms therefore there will no requirement for the Plan to identify further reserves. There may, however, be exceptional circumstances where permission may be granted for further reserves. The paper considers options for dealing with this. Further information is available in a [supporting paper](#).

Brick Clay and Fireclay – This [strategy paper](#) looks at developing an approach to ensure that an adequate and steady supply of brick clay and fireclay can be maintained over the Plan period. Brick clay is worked at two sites within the Plan area and exported to brickworks outside the Plan area. Currently the level of permitted reserves of brick clay in the Plan area indicates that, numerically, these is more than sufficient to meet the anticipated demand. However, there are other factors which need to be taken into account in ensuring supply, such as the need for additional reserves at specific sites, the complex specifications of the mineral, the requirements of brickworks for different resources for blending and the need to maintain land banks of permitted reserves. The Strategy therefore presents a number of options to ensure supply based on existing permissions, a criteria based policy to allow new working and specific allocations of land for working. Fireclay extraction is only viable as a co- or by-product of surface coal working; the Strategy therefore suggests that the benefit of extracting fireclay should be taken into account in determining the overall acceptability of surface mining coal working proposals. Further information is available in a [supporting paper](#).

Building Stone – In Derbyshire and Derby, the main source of building and roofing stone is the sandstone/gritstone of Carboniferous origin. The market for building stone is small but profitable and is concerned mainly with the repair and restoration of historic buildings or with the repair/extension of existing properties or new build properties and structures in areas of high environmental value. This [strategy paper](#) sets out the issues and principles regarding the provision of building stone in the MLP and suggests an emerging approach. Further information is available in a [supporting paper](#), updated in the light of comments received.

Coal (Surface) – This [strategy paper](#) focuses on the extraction of coal and the treatment of colliery spoil tips. It summarises coal mining history in the Plan area and how that industry has shaped the place in which we now live and work. It acknowledges the extent of the remaining coal resource and identifies the issues that further mining would create. This includes a review of current Government policy on coal mining and how that policy affects the options available to the new Minerals Local Plan. This paper summarises the main messages from previous consultation exercises and stakeholder discussions and presents a number of potential options for the approach of the new Minerals Local Plan to future coal extraction in the Plan area. Further information is available in a [supporting paper](#).

Coal (Deep Mined) – This [strategy paper](#) acknowledges the extent of the remaining coal resource and identifies the issues that further mining would create. This paper summarises the main messages from previous consultation exercises and stakeholder discussions and presents a number of potential options for the approach of the new Minerals Local Plan to future deep coal extraction in the Plan area. It summarises coal mining history in the Plan area and how that industry has shaped the Plan area and reviews current Government policy on coal mining and how that policy affects the options available to the new Minerals Local Plan. Further information is available in a [supporting paper](#).

Hydrocarbons – This [strategy paper](#) identifies the geological conditions which make Derbyshire an important location for hydrocarbon resources and considers the implications of potential future extraction including those raised by new technologies such as hydraulic fracturing. It reviews the relevance of national planning policy and the implications of the evolving national energy policy in developing the policies in the MLP. The emerging options concern the level of detail that should be included in the MLP concerning the identification of known reserves and the criteria to be used to assess new development proposals. It asks specific questions about the approach to be taken towards hydraulic fracturing and other forms of hydrocarbon extraction. Further information is available in a series of supporting papers on [conventional oil and gas](#), [gas from coal](#) and [shale gas](#).

Industrial Limestone – This [strategy paper](#) looks at developing an approach to ensure that an adequate and steady supply of industrial limestone can be maintained over the Plan period. Currently, the level of permitted reserves in the Plan area indicates that, numerically, these are more than sufficient to meet the anticipated demand. However, there are other factors that also need to be taken into account in ensuring a steady and adequate supply is maintained, such as the need for additional reserves at specific sites, the diverse nature of industrial limestone markets and complex specifications of this mineral and the need to maintain land banks of permitted reserves. The Strategy therefore presents a number of options to ensure supply based on existing permissions, a criteria based policy to allow new working and specific allocations of land for working. Further information is available in supporting papers on [industrial limestone](#) and [cement](#). An addendum is proposed to the appendices of the Industrial Limestone strategy and supporting

papers to take into account an additional site that has been promoted by the operator for allocation in the Plan. Further details can be found in the [Industrial Limestone Additional Site Paper](#).

Sand and Gravel – The MLP has to make provision for a steady and adequate supply of minerals. In this context, the Local Aggregate Assessment sets out the amount of sand and gravel that should be worked in Derbyshire and Derby. The main messages from previous consultation exercises are reviewed and the [Sand and Gravel Strategy Paper](#) sets out the issues and principles that will be taken into account in considering where this should be worked over the Plan period. This also includes looking at a site selection methodology for the promoted sites. Further information is available in a [supporting paper](#).

The [Sand and Gravel Site Assessments Paper](#) sets out illustrative assessments of all eight sites that have been put forward as potential allocations for sand and gravel working in the Minerals Local Plan. These are based on the draft assessment methodology that is being published alongside this paper. Further information is available in the [Sand and Gravel Sites – Assessment Methodology Paper](#). Originally twelve sites were put forward but three have been withdrawn and another has now has the benefit of planning permission.

Vein Minerals – This [strategy paper](#) identifies the main issues associated with vein mineral extraction. A review of known information about the extent and location of the remaining commercial reserves is important in developing both an approach to extraction and to the inter-relationship of the MLP with the Peak District National Park policies. The main messages from previous consultation exercises are summarised and an emerging approach and suggested draft policy wording suggested. Further information is available in a [supporting paper](#) about vein minerals.

[Site Assessment Methodology for Ashwood Dale, Mouselow and Whitwell Quarries](#) – this Paper sets out an emerging Methodology that will be used to assess non sand and gravel sites that have been put forward for allocation for working by mineral operators. The additional promoted site at Brassington Moor/Aldwark Quarry will also be subject to evaluation by this methodology.

Other Relevant Papers

In addition to the consultation papers listed above, the MLPs are required to produce a number of other documents to support the final Plan and demonstrate that certain issues have been considered during its preparation. This includes the sustainability appraisal and the Local Aggregate Assessment but also will include, at the time of submission a strategic flood risk assessment, habitat regulations assessment, equality impact assessment and a health impact assessment.

Sustainability Appraisal

The purpose of the planning system is to achieve sustainable development through positive growth and economic, social and environmental progress. It is a statutory requirement in the Planning and Compulsory Purchase Act 2004 that a Sustainability Appraisal (SA) of the Local Plan is prepared. EU Directive 2001/42 requires that a Strategic Environmental Assessment (SEA) is carried out in respect of the Local Plan.

Following Government guidance and in the interests of efficiency, the two processes are generally integrated. A SA of the Local Plan is carried out in order to assess its impacts on social, economic and environmental objectives and which also meets the requirements for a SEA of the Local Plan.

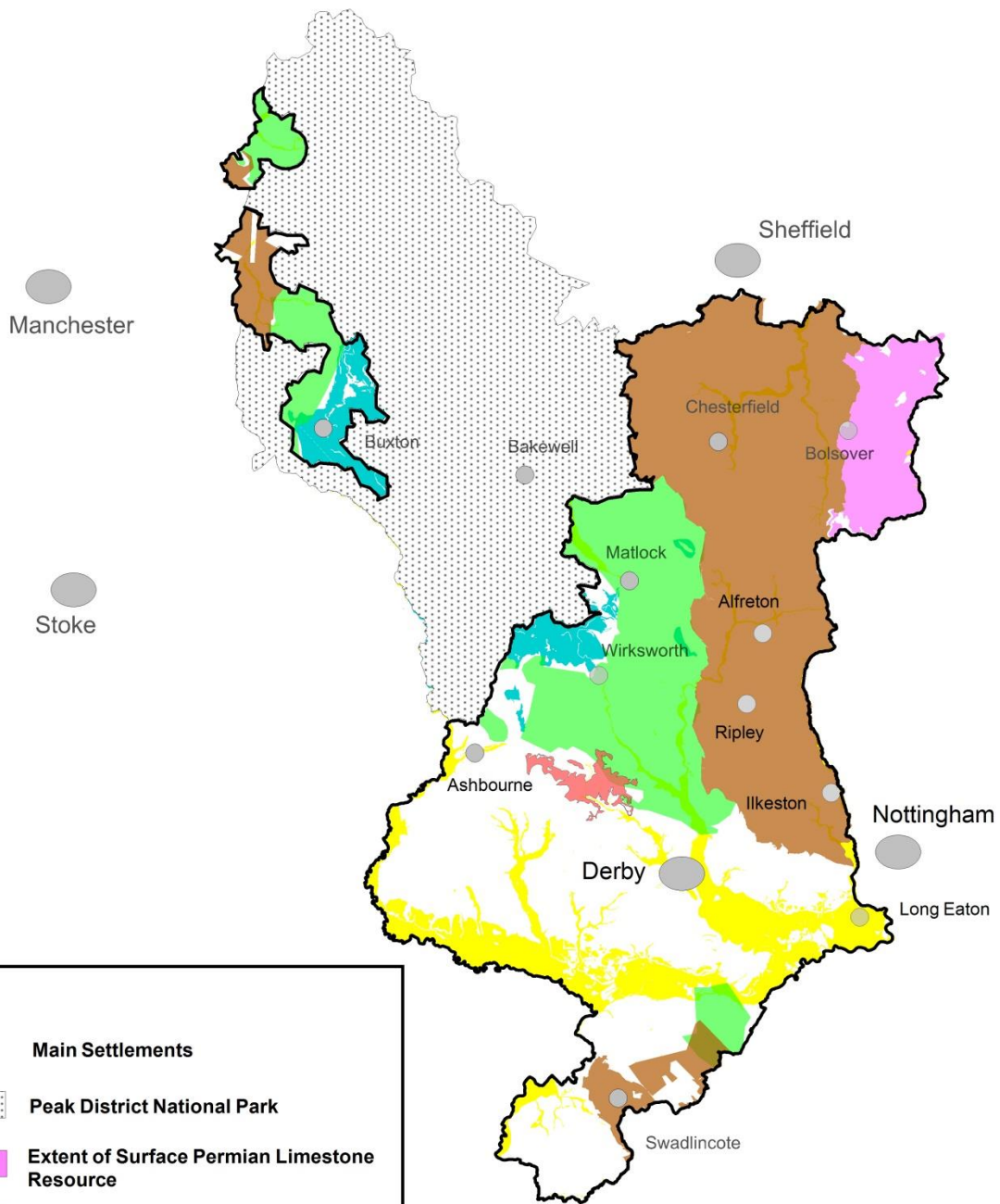
SA is an integral part of the plan-making process. It is an iterative process where outcomes of the appraisal are fed back to inform the development of the policies and proposals of the Local Plan. The documents produced during Plan preparation should be subject to SA. The SA is subject to public consultation and should be published alongside each stage of the Local Plan preparation as a key supporting document.

Sustainability Appraisal Papers that have been produced so far include the [SA Scoping Report and Appendices](#) and the [Minerals Issues and Options Interim SA](#).

Local Aggregate Assessment

This [assessment](#) sets out the current and future situation in Derbyshire, Derby and the PDNP with regard to all aspects of aggregate supply, in particular, setting out the amount of land won aggregate that the area will need to provide.

Mineral Resources in Derbyshire



KEY

- Main Settlements
- ▨ Peak District National Park
- Extent of Surface Permian Limestone Resource
- Extent of Surface Carboniferous Limestone Resource
- Extent of Surface Coal Resource
- Extent of Millstone Grit Resource
- Extent of Sherwood Sandstone Resource
- Extent of River Valley Gravels Resource

Scale 1:485,600

