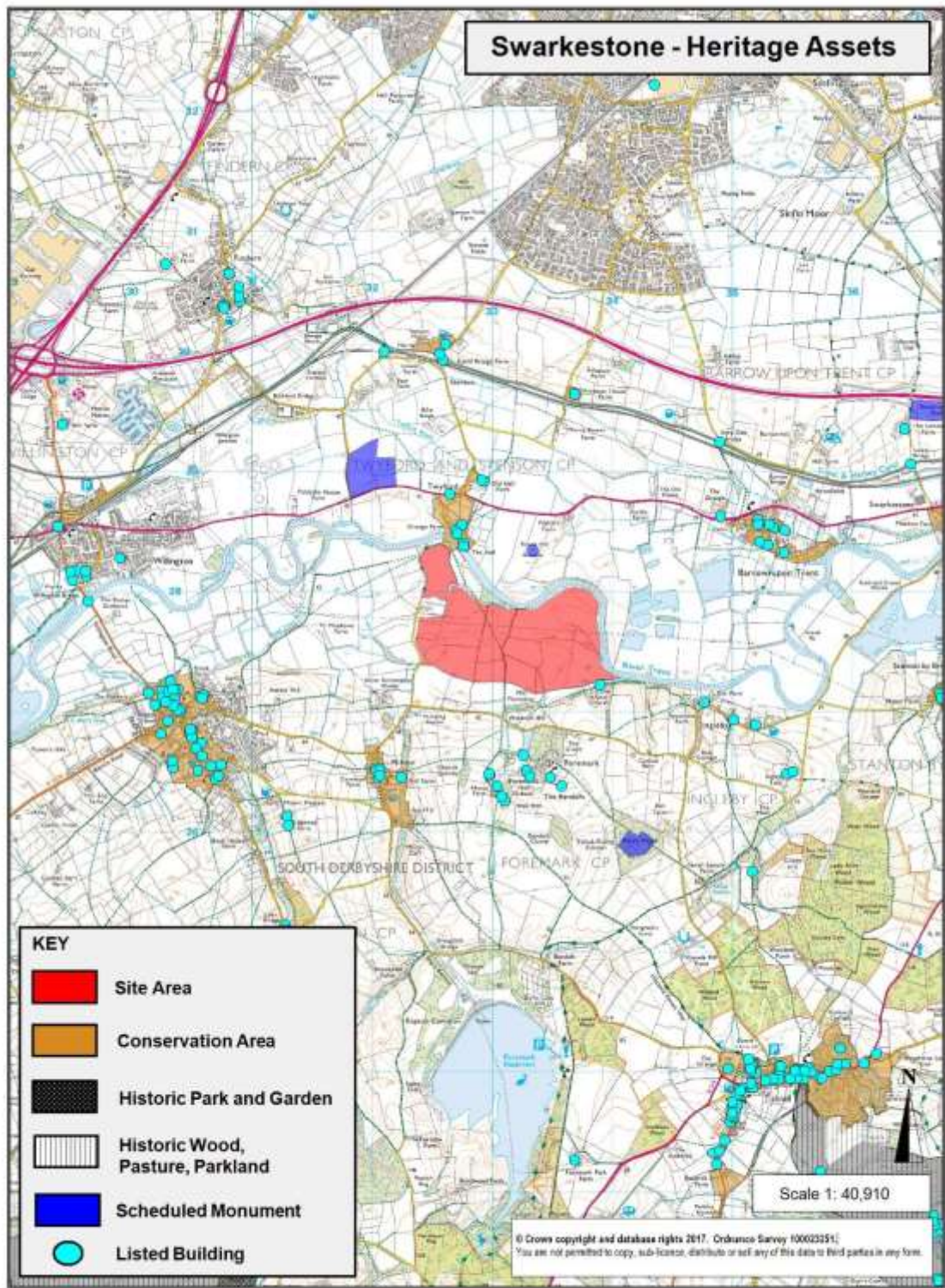
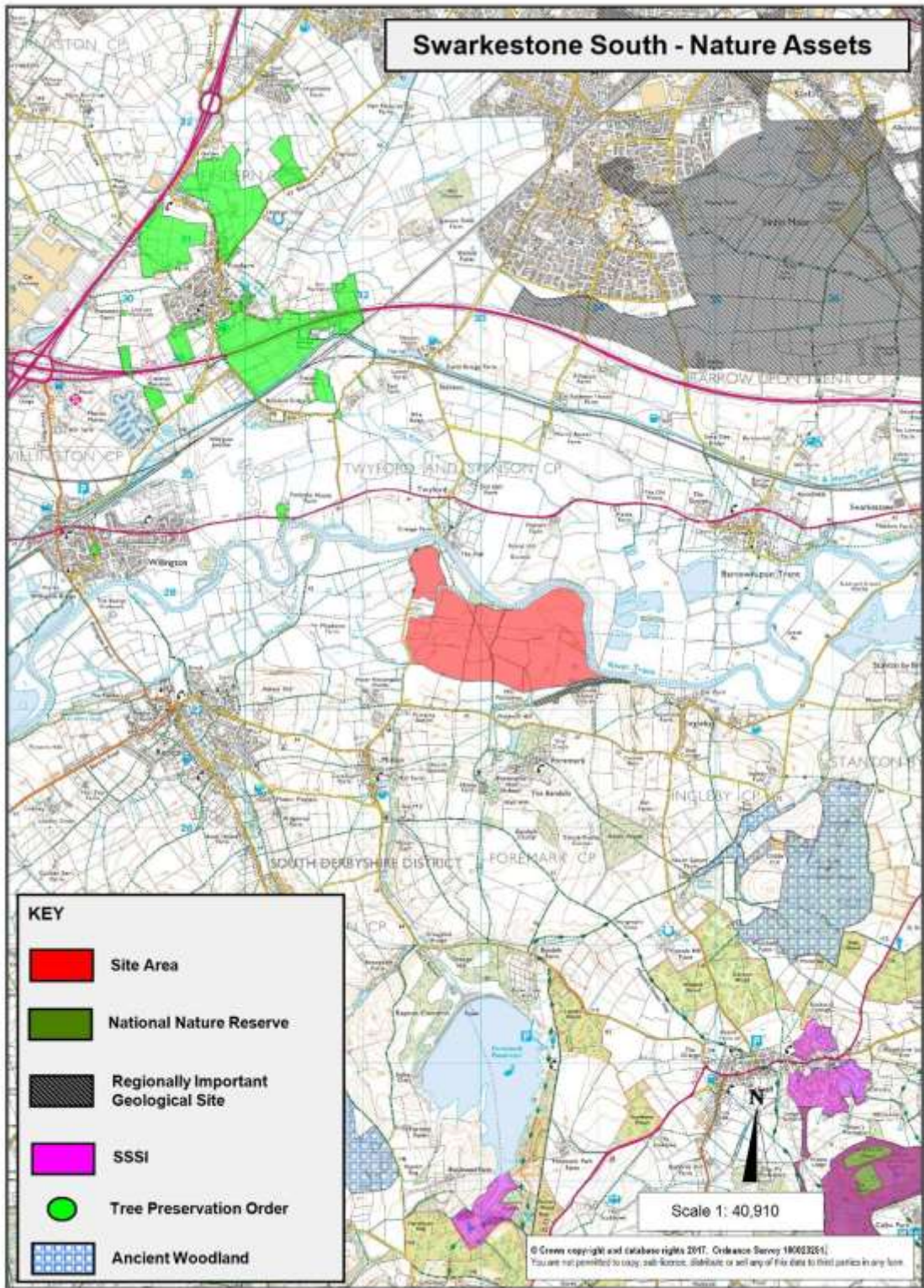


# SWARKESTONE SOUTH MAPS

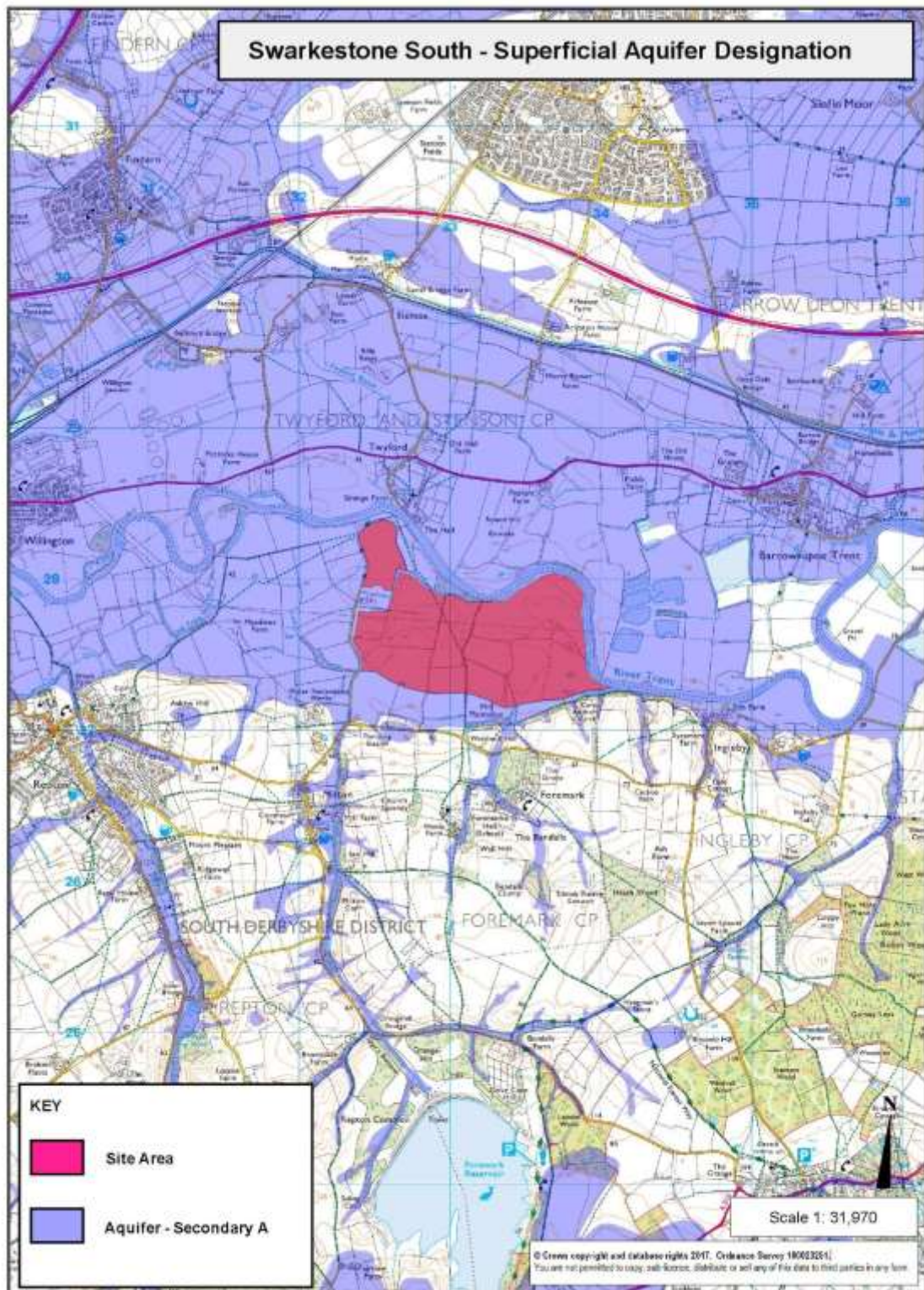


Reproduced from the Ordnance Survey mapping with the permission of the Controller of Her Majesty's Stationery Office. (C) Crown Copyright. Unauthorised reproduction infringes Crown Copyright and may lead to prosecution or civil proceedings.



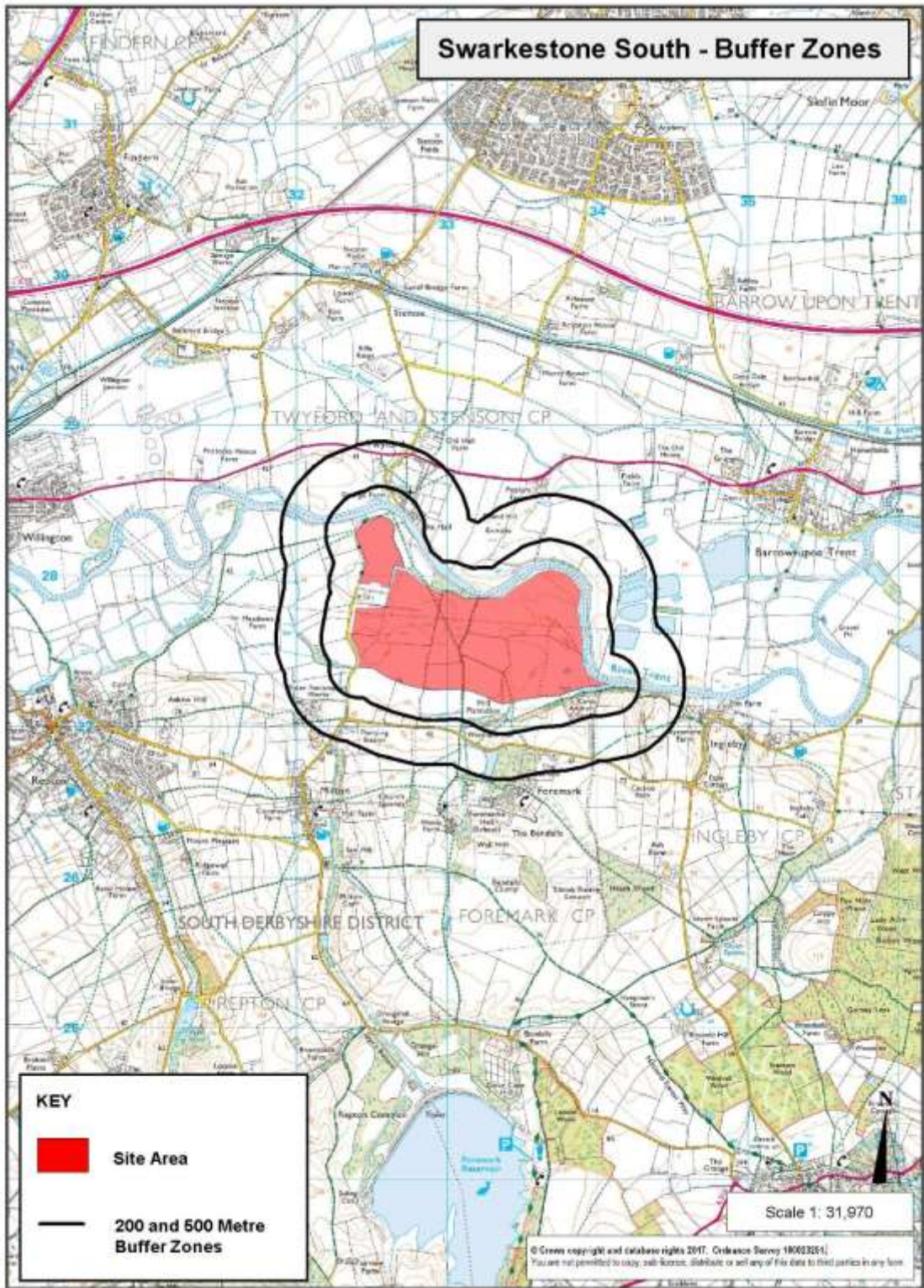
Reproduced from the Ordnance Survey mapping with the permission of the Controller of Her Majesty's Stationary Office. (C) Crown Copyright. Unauthorised reproduction infringes Crown Copyright and may lead to prosecution or civil proceedings.

## Swarkestone South - Superficial Aquifer Designation



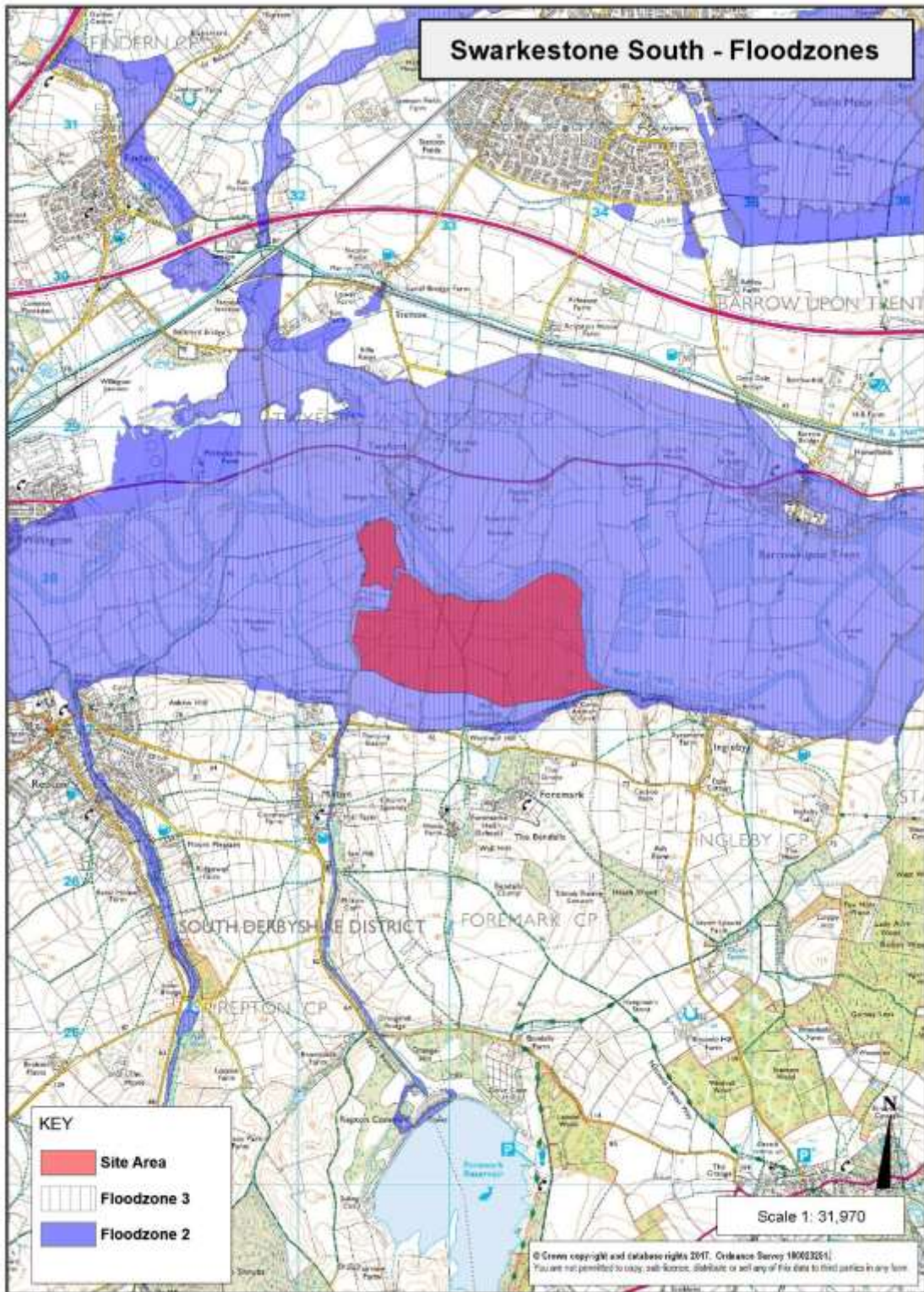
Reproduced from the Ordnance Survey mapping with the permission of the Controller of Her Majesty's Stationery Office. (C) Crown Copyright  
Unauthorized reproduction infringes Crown Copyright and may lead to prosecution or civil proceedings.

# Swarkestone South - Buffer Zones



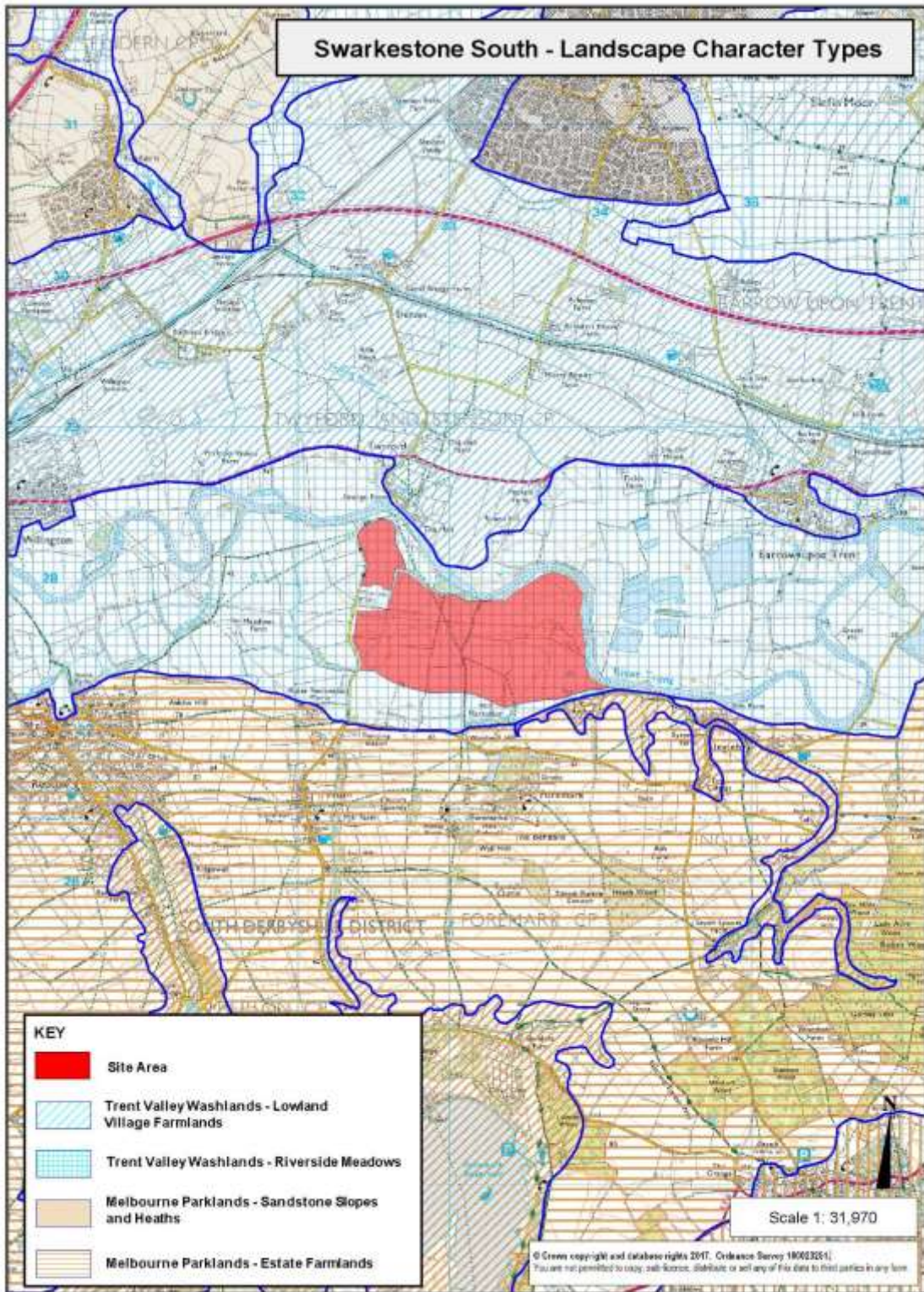
Reproduced from the Ordnance Survey mapping with the permission of the Controller of Her Majesty's Stationery Office. (C) Crown Copyright. Unauthorised reproduction infringes Crown Copyright and may lead to prosecution or civil proceedings.

## Swarkestone South - Floodzones



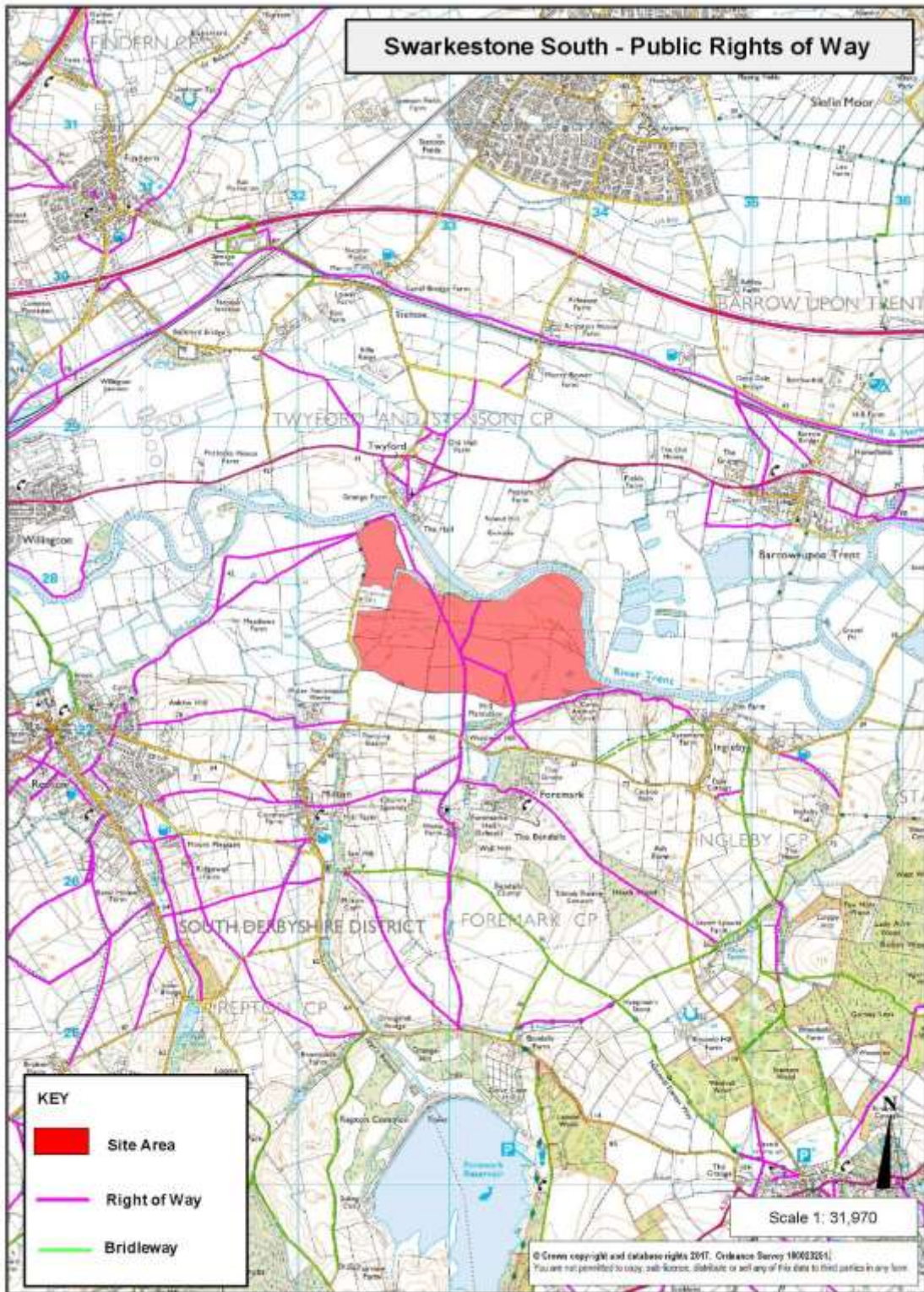
Reproduced from the Ordnance Survey mapping with the permission of the Controller of Her Majesty's Stationery Office. (C) Crown Copyright  
Unauthorized reproduction infringes Crown Copyright and may lead to prosecution or civil proceedings.

## Swarkestone South - Landscape Character Types



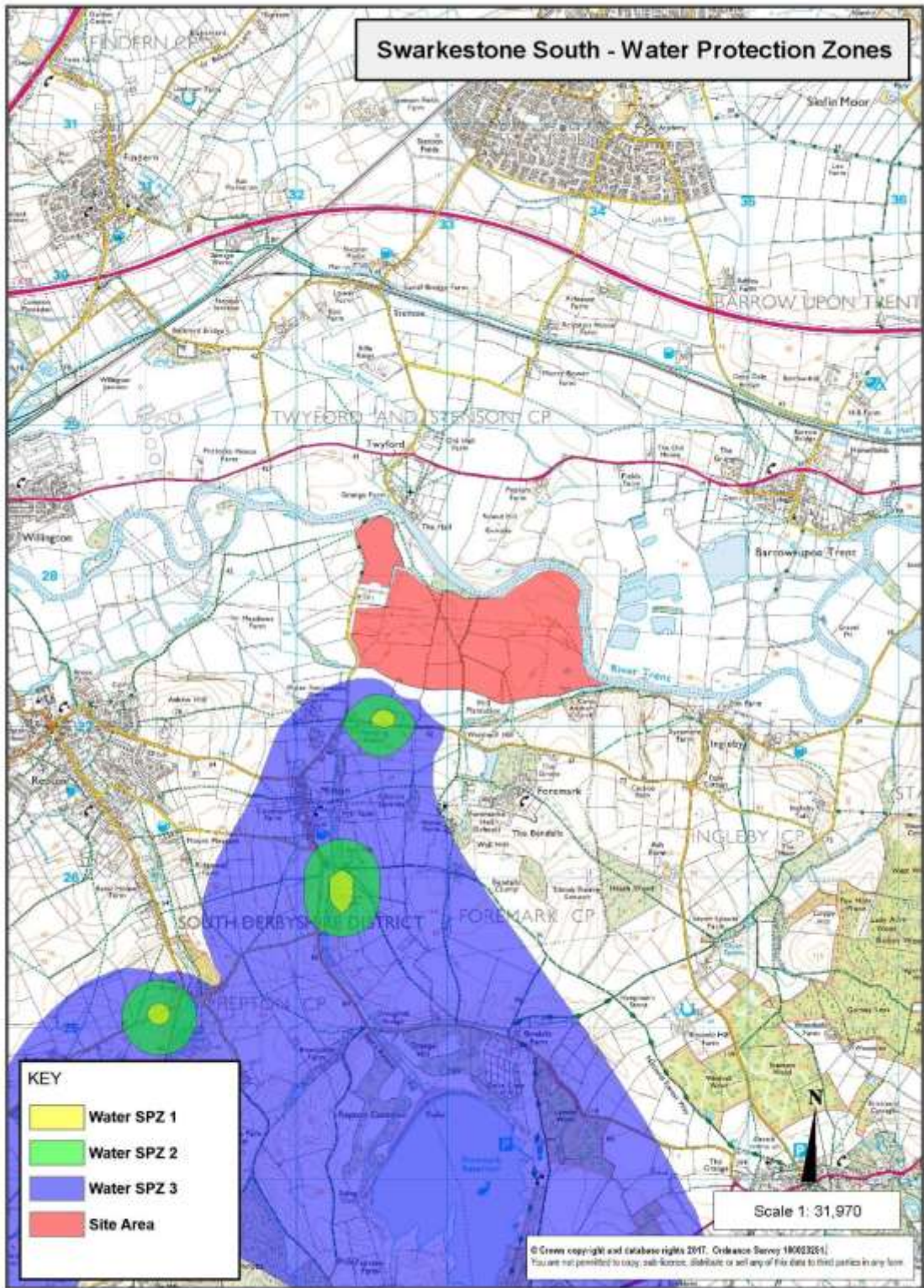
Reproduced from the Ordnance Survey mapping with the permission of the Controller of Her Majesty's Stationery Office. (C) Crown Copyright. Unauthorised reproduction infringes Crown Copyright and may lead to prosecution or civil proceedings.

# Swarkestone South - Public Rights of Way

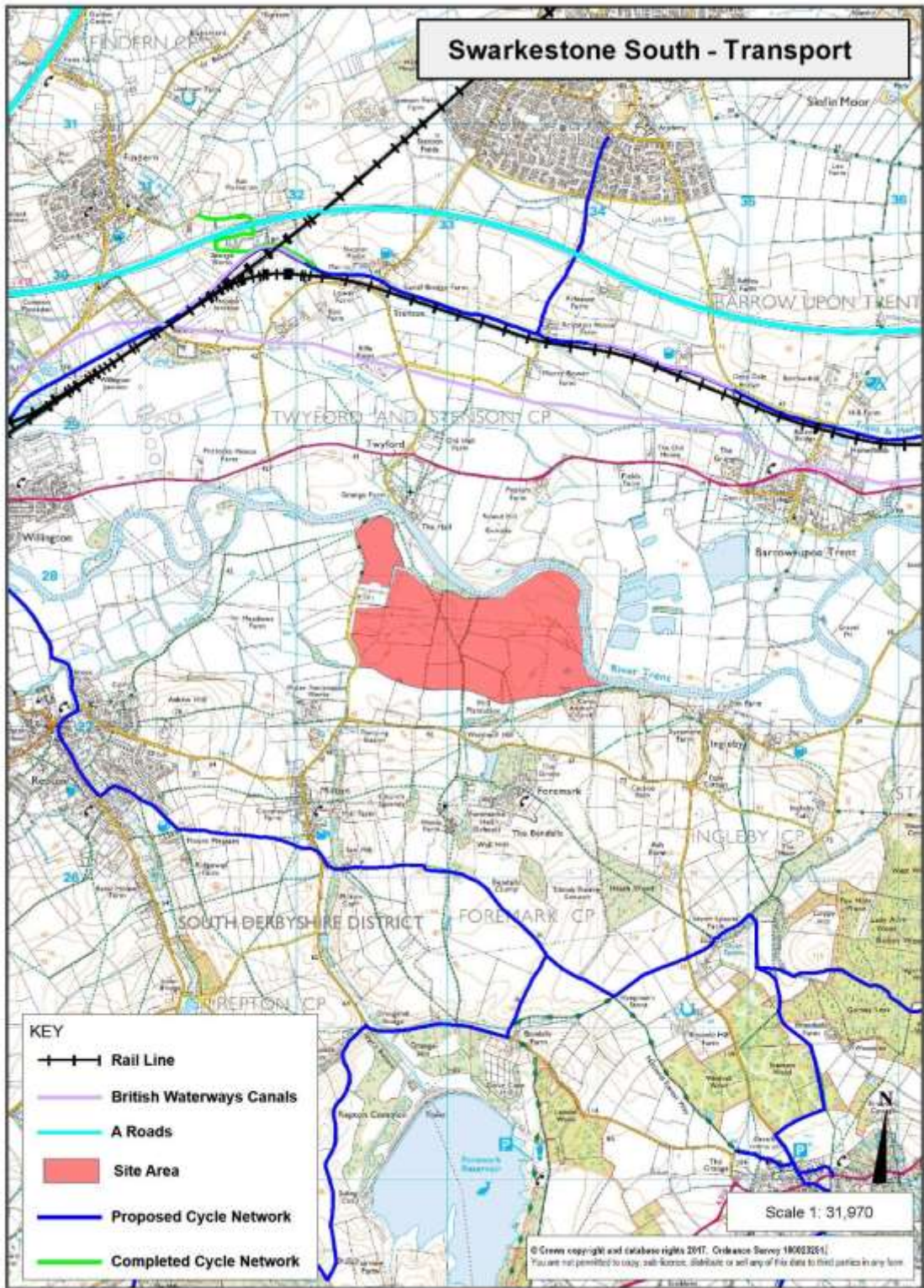


Reproduced from the Ordnance Survey mapping with the permission of the Controller of Her Majesty's Stationery Office. (C) Crown Copyright. Unauthorised reproduction infringes Crown Copyright and may lead to prosecution or civil proceedings.





Reproduced from the Ordnance Survey mapping with the permission of the Controller of Her Majesty's Stationery Office. (C) Crown Copyright. Unauthorised reproduction infringes Crown Copyright and may lead to prosecution or civil proceedings.



Reproduced from the Ordnance Survey mapping with the permission of the Controller of Her Majesty's Stationery Office. (C) Crown Copyright. Unauthorised reproduction infringes Crown Copyright and may lead to prosecution or civil proceedings.