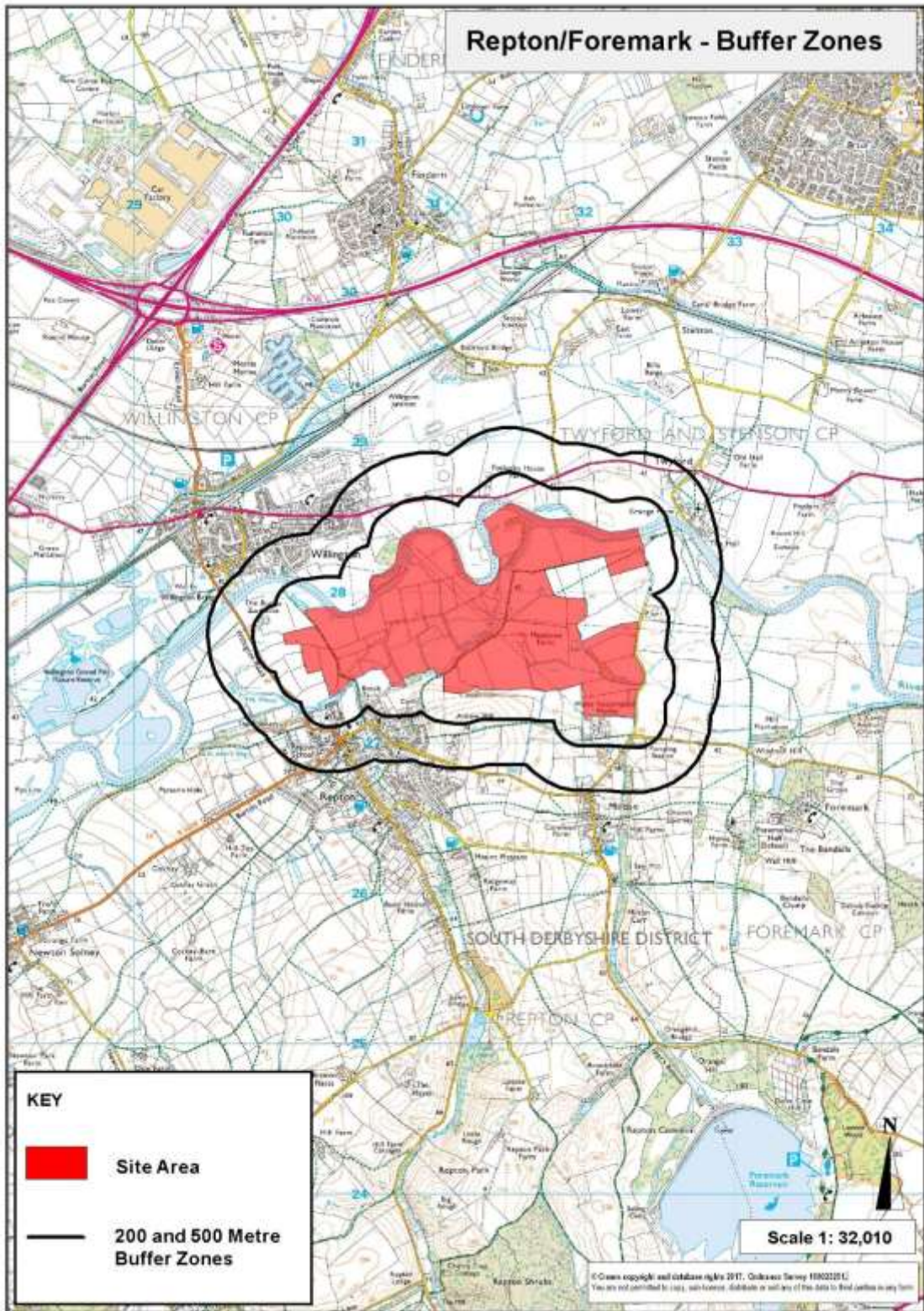
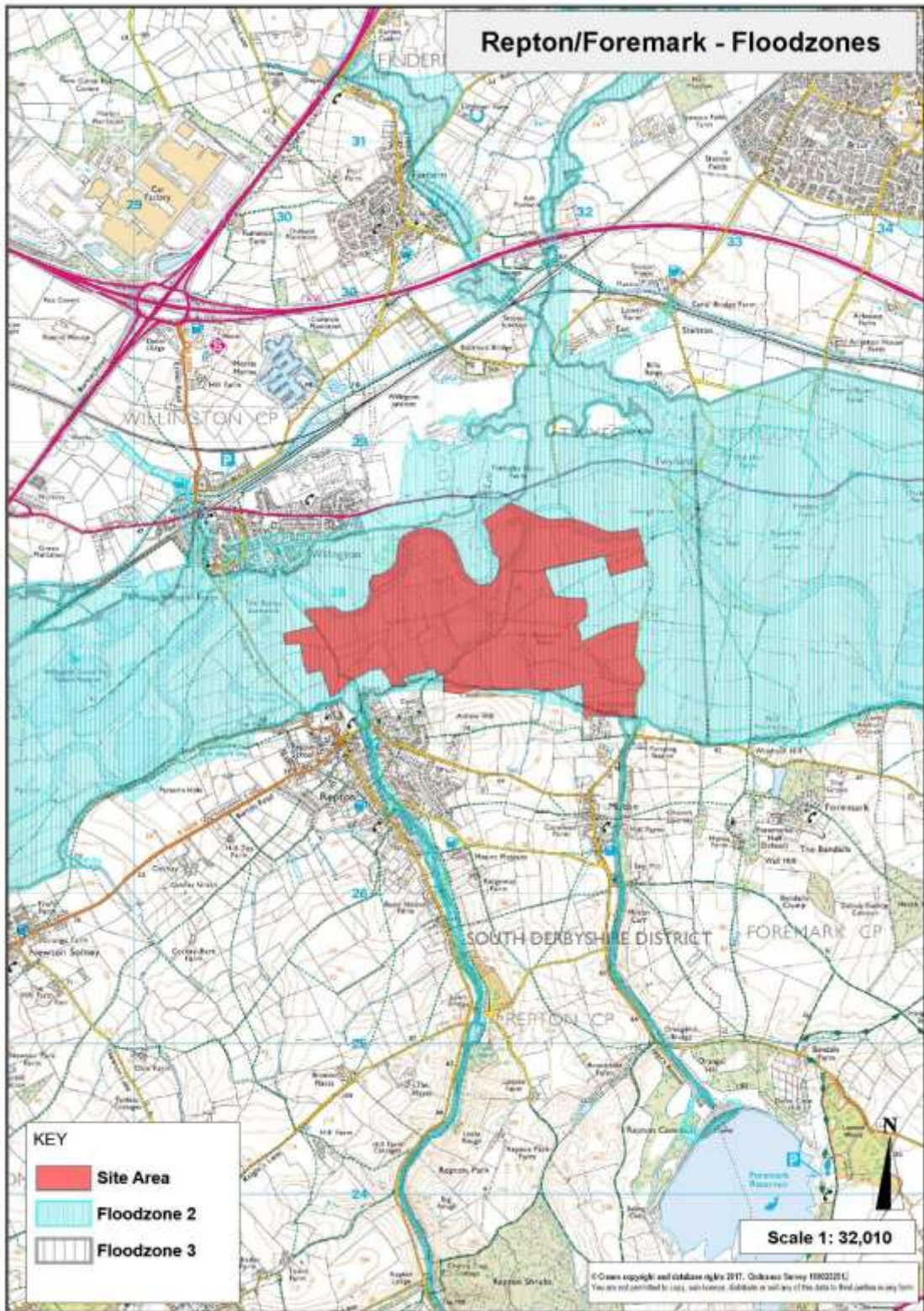


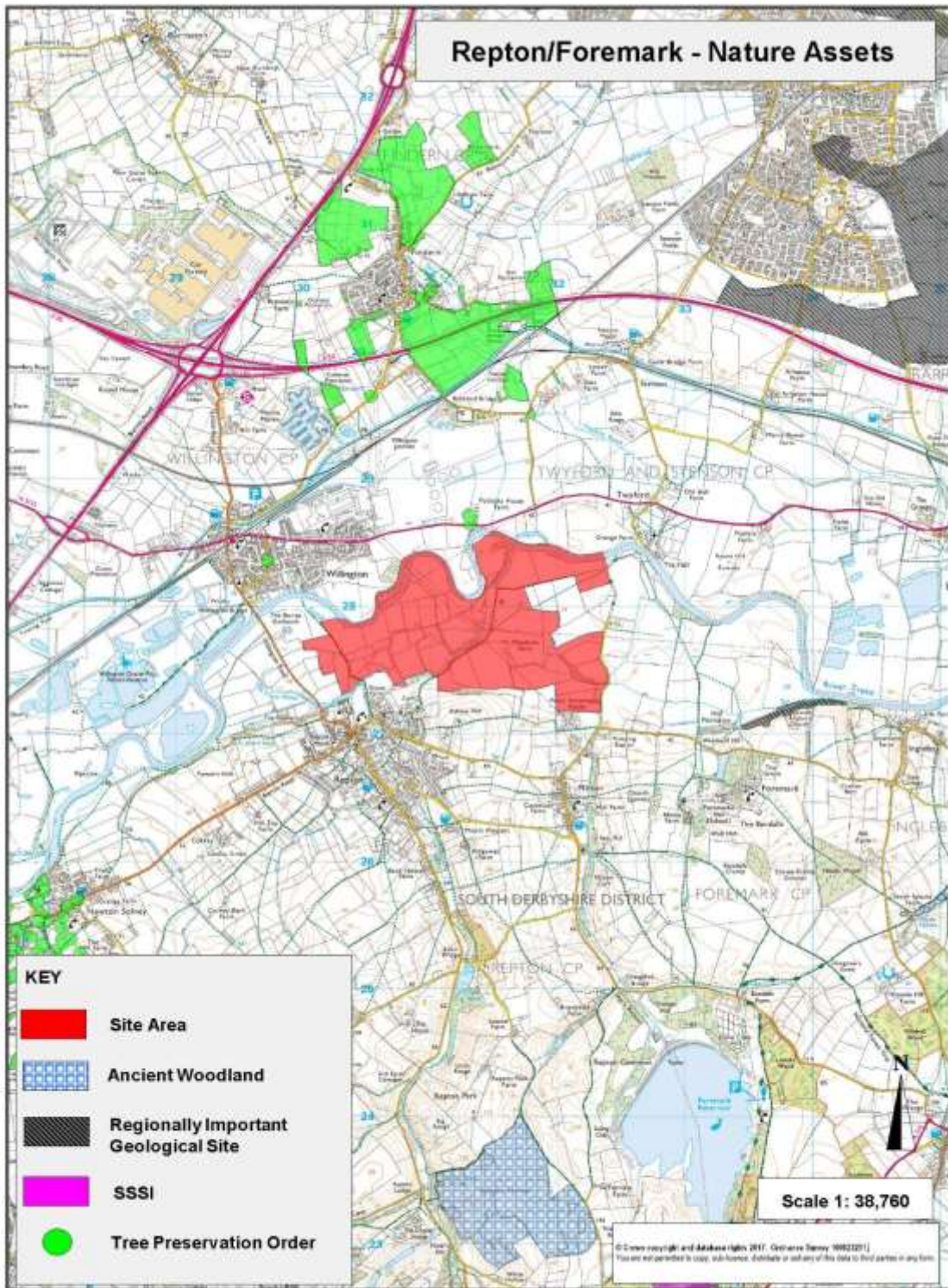
# REPTON/FOREMARK MAPS



Reproduced from the Ordnance Survey mapping with the permission of the Controller of Her Majesty's Stationery Office. (C) Crown Copyright. Unauthorised reproduction infringes Crown Copyright and may lead to prosecution or civil proceedings.

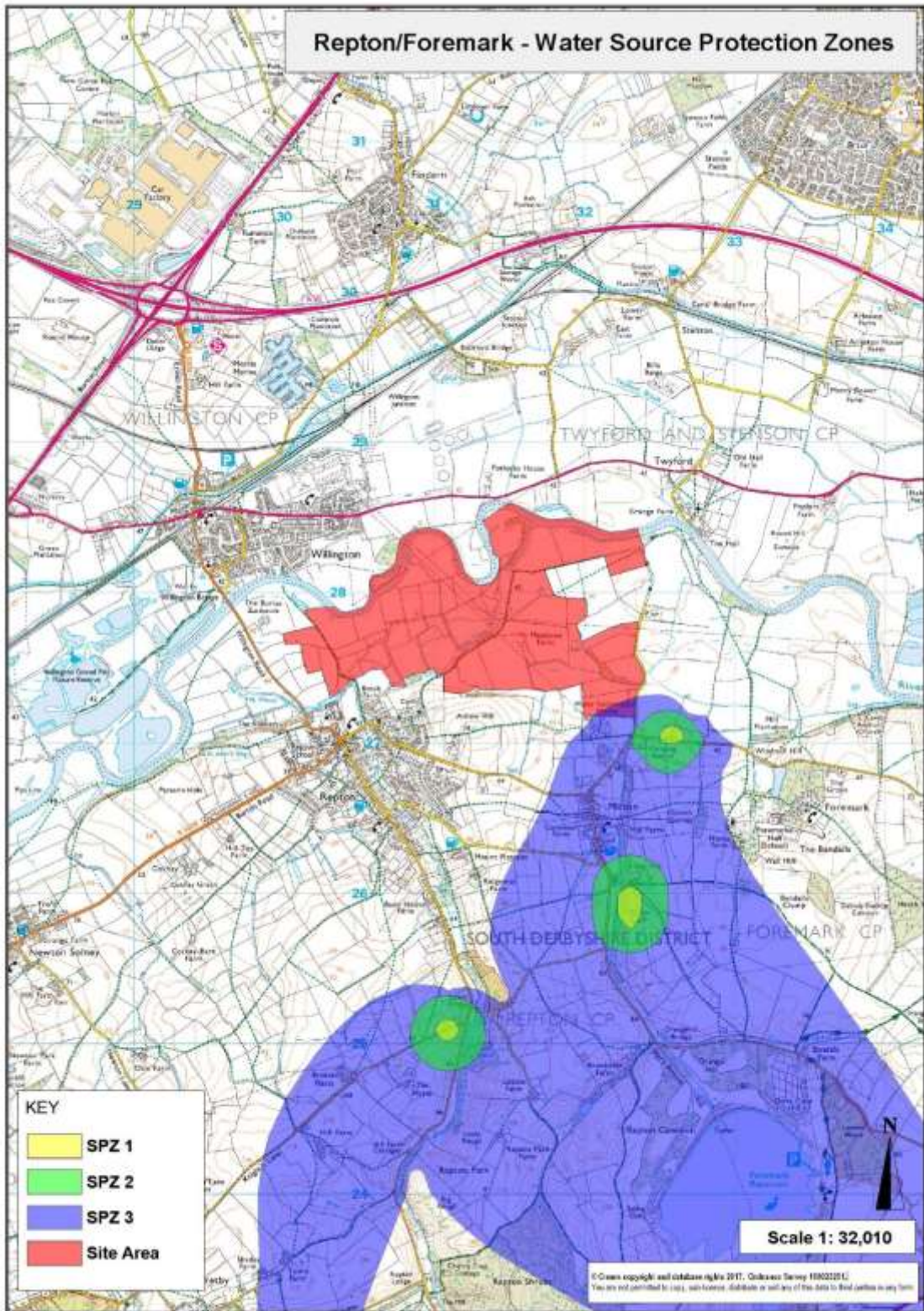


Reproduced from the Ordnance Survey mapping with the permission of the Controller of Her Majesty's Stationery Office. (C) Crown Copyright. Unauthorized reproduction infringes Crown Copyright and may lead to prosecution or civil proceedings.

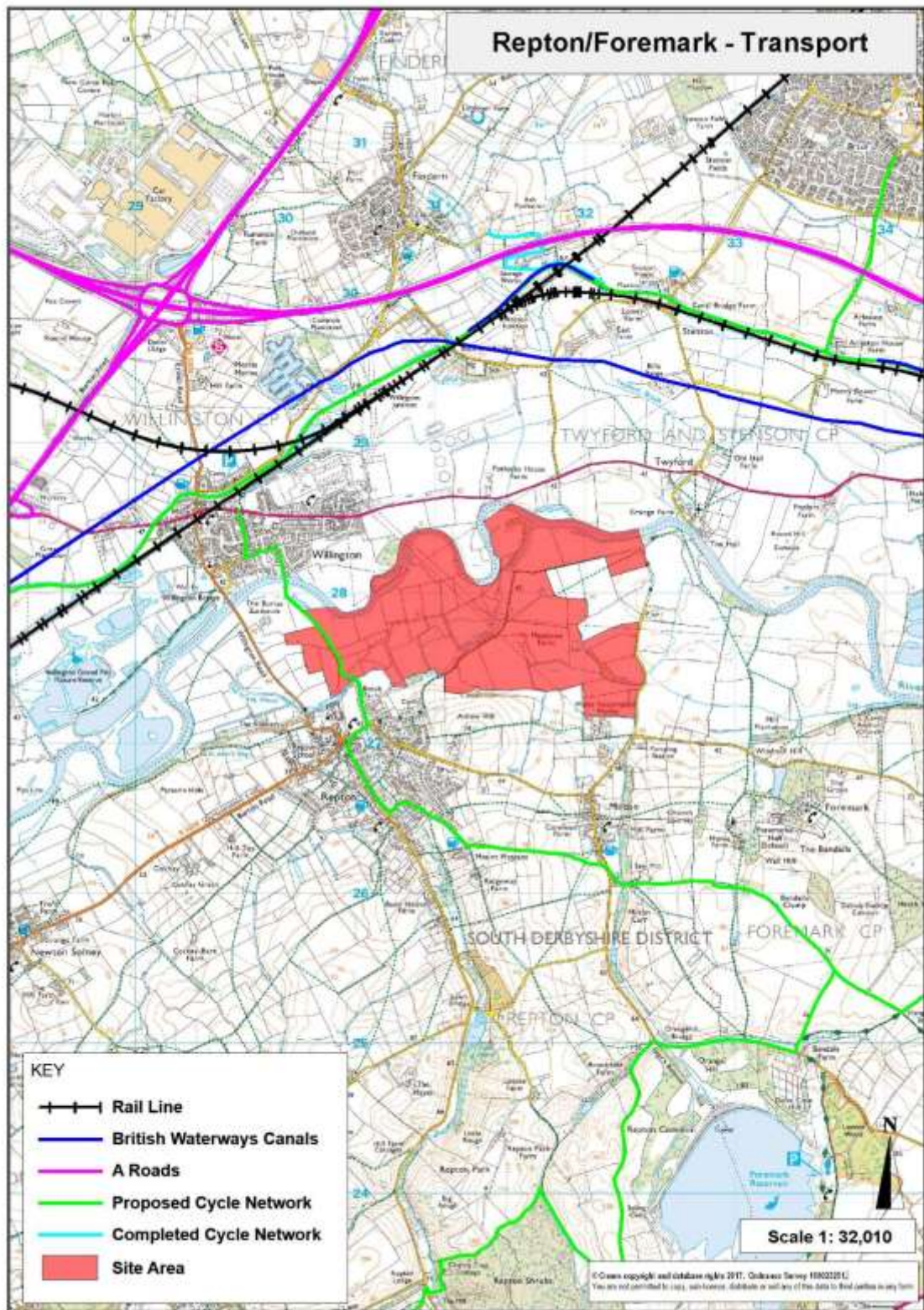


Reproduced from the Ordnance Survey mapping with the permission of the Controller of Her Majesty's Stationery Office. (C) Crown Copyright  
Unauthorized reproduction infringes Crown Copyright and may lead to prosecution or civil proceedings.

# Repton/Foremark - Water Source Protection Zones

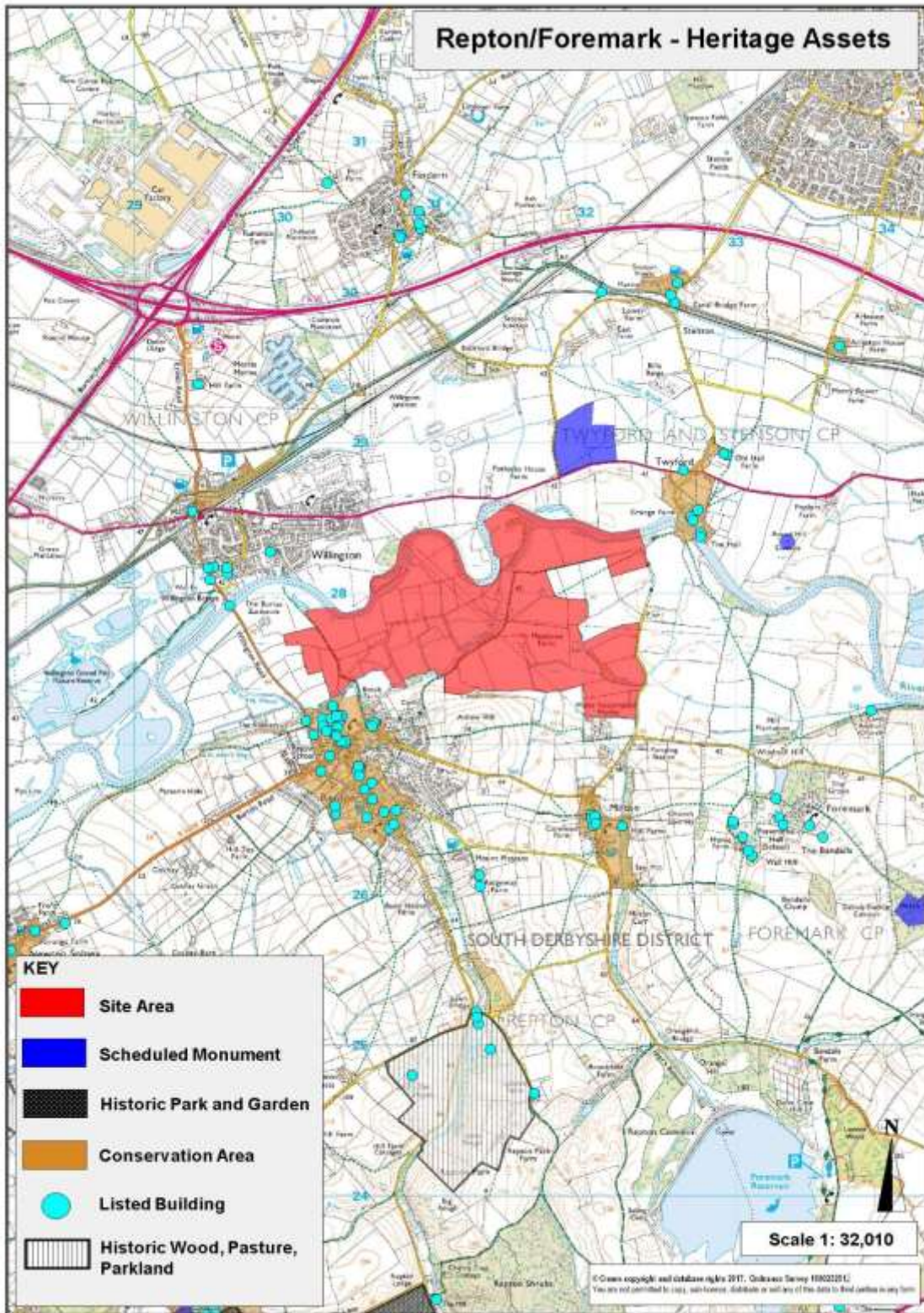


Reproduced from the Ordnance Survey mapping with the permission of the Controller of Her Majesty's Stationery Office. (C) Crown Copyright. Unauthorised reproduction infringes Crown Copyright and may lead to prosecution or civil proceedings.



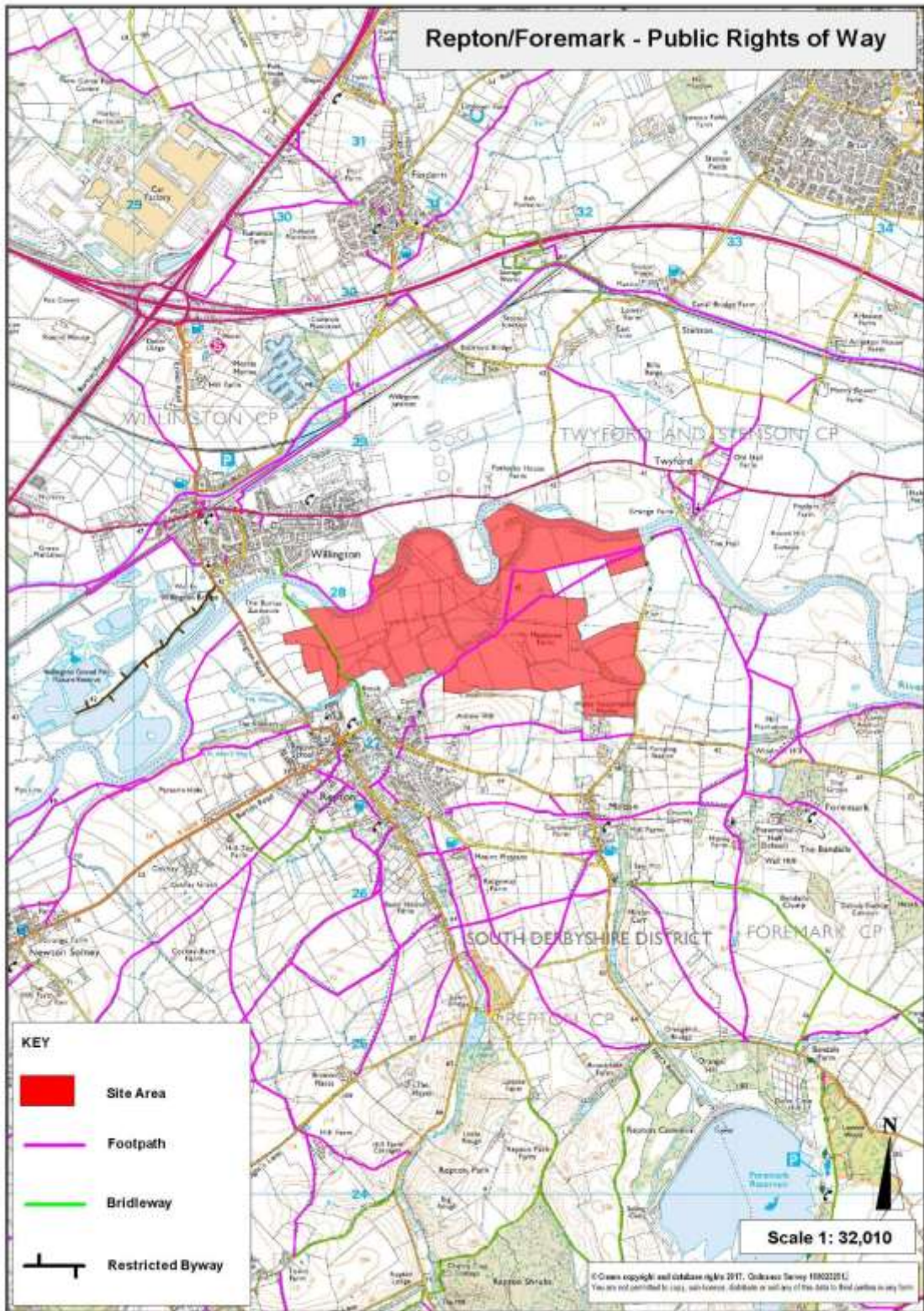
Reproduced from the Ordnance Survey mapping with the permission of the Controller of Her Majesty's Stationery Office. (C) Crown Copyright. Unauthorised reproduction infringes Crown Copyright and may lead to prosecution or civil proceedings.

## Repton/Foremark - Heritage Assets



Reproduced from the Ordnance Survey mapping with the permission of the Controller of Her Majesty's Stationery Office. (C) Crown Copyright. Unauthorised reproduction infringes Crown Copyright and may lead to prosecution or civil proceedings.

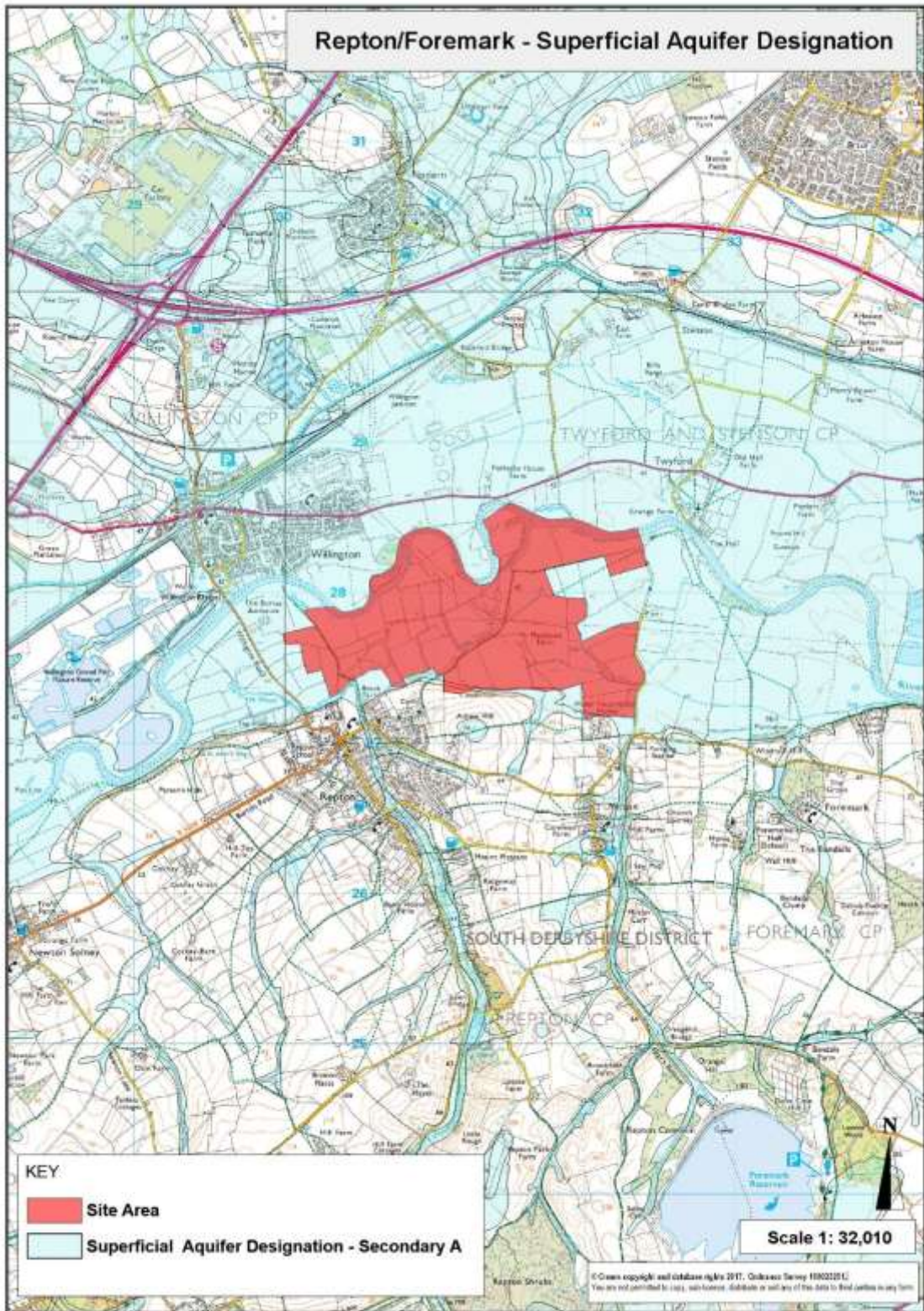
# Repton/Foremark - Public Rights of Way



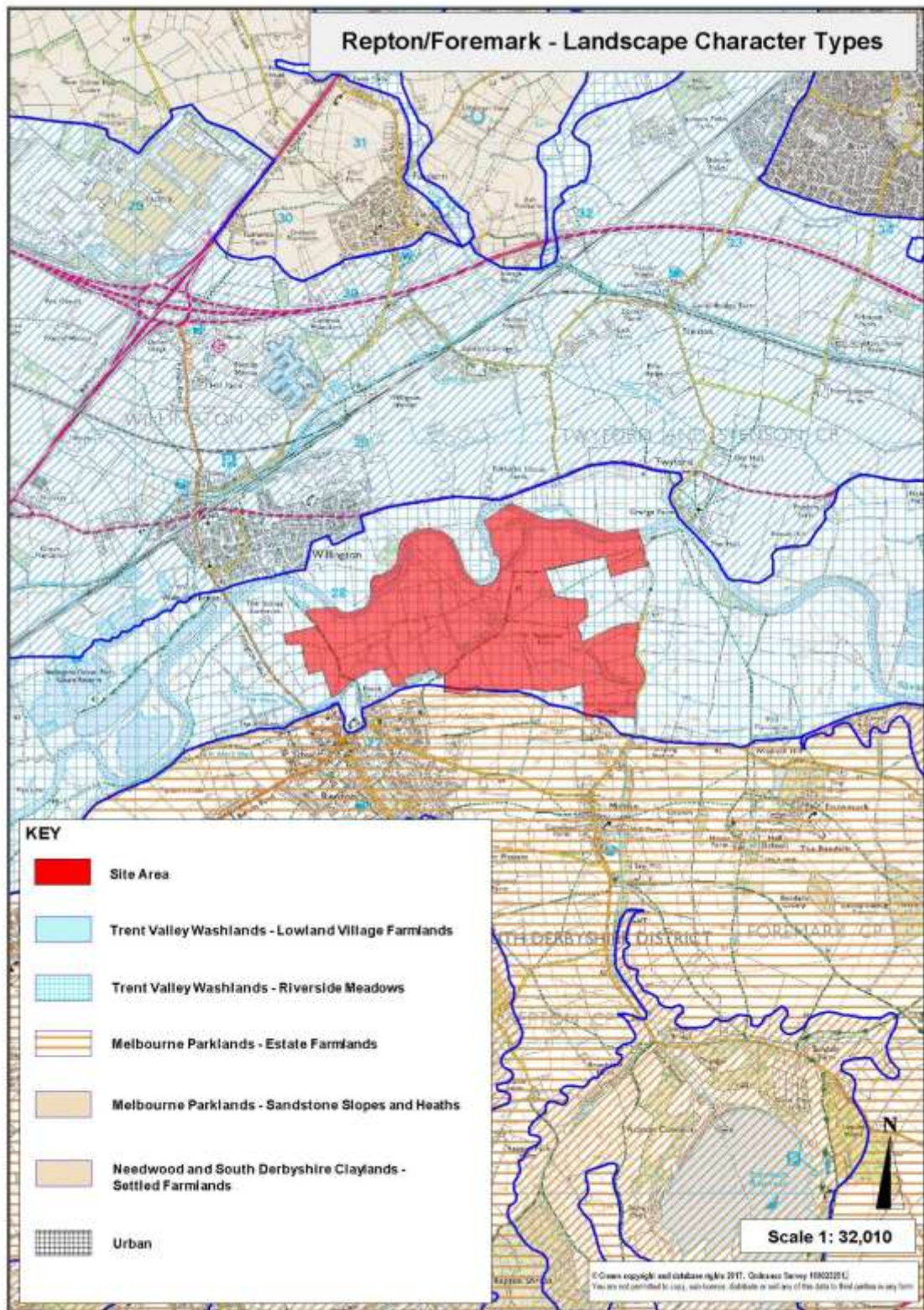
Reproduced from the Ordnance Survey mapping with the permission of the Controller of Her Majesty's Stationery Office. (C) Crown Copyright. Unauthorised reproduction infringes Crown Copyright and may lead to prosecution or civil proceedings.



# Repton/Foremark - Superficial Aquifer Designation



Reproduced from the Ordnance Survey mapping with the permission of the Controller of Her Majesty's Stationery Office. (C) Crown Copyright. Unauthorised reproduction infringes Crown Copyright and may lead to prosecution or civil proceedings.



Reproduced from the Ordnance Survey mapping with the permission of the Controller of Her Majesty's Stationery Office. (C) Crown Copyright. Unauthorised reproduction infringes Crown Copyright and may lead to prosecution or civil proceedings.

