

Chapter 7: Monitoring plan

This chapter provides a summary of the monitoring plan produced for the Natural Capital Strategy (Appendix 12); it is designed to help the continued monitoring of natural capital within Derbyshire, with a focus on habitats as key resources underpinning the delivery of natural capital strategy. Monitoring natural capital:

- Supports initiatives for nature recovery, biodiversity net gain, and wider ecosystem service delivery by providing a mechanism whereby the success of the schemes can be judged.
- Identifies and quantifies both known and unexpected changes to natural capital that affect the value of the resource.

Key to monitoring is maintaining an up-to-date habitat map as habitats are the factor which is most likely to show quantifiable change within the timeframe of a few years. By contrast, the other factors used in modelling such as landform, soil, geology and land hydrology are much less likely to do so. The update process for the Habitat map is shown in Figure 77.

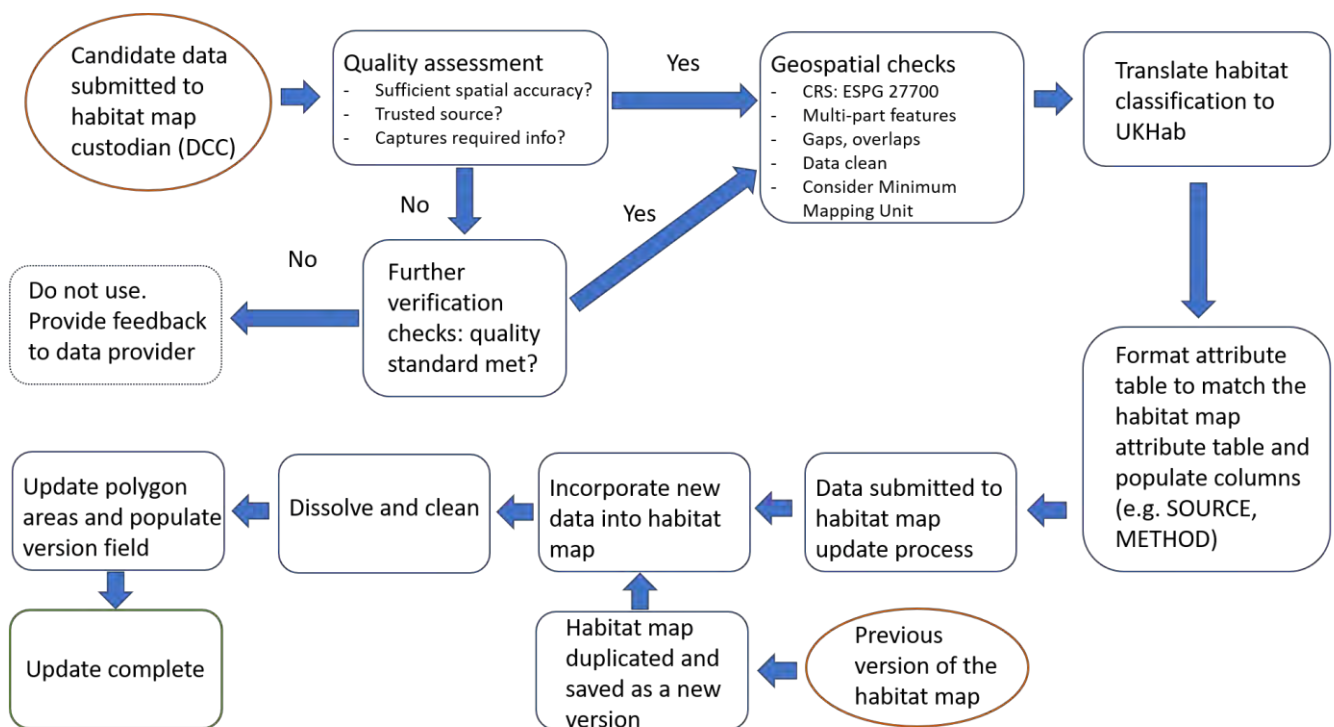


Figure 77: Habitat map update process

The accounts and ecosystem services should be re-run at least every five years as change can be expected within this timeframe that is material to the natural capital accounts. This change will be as a result of increased investment in nature-



based solutions together with increasing pressures on land, including those from climate change.

The Derbyshire natural capital asset account will also need to be periodically updated to monitor the benefits and underlying assets presented in the account. The level of analysis and frequency for such updates depends on changes to underlying data and available resources, but some aspects of the account can be readily updated on an annual basis. For example, market benefits such as water supply and minerals data can be updated to the latest annual market values. Other benefits require data inputs from external models (such as air quality regulation) which are updated less frequently. More detailed updates to the accounts would be beneficial if spatial plans or other strategic documents are renewed and the recommended frequency of this is a 5-yearly update as set out in the monitoring plan.

