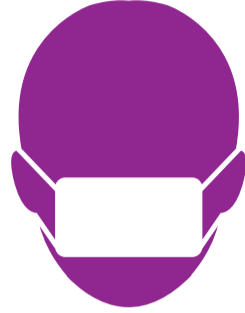


COVID Safety

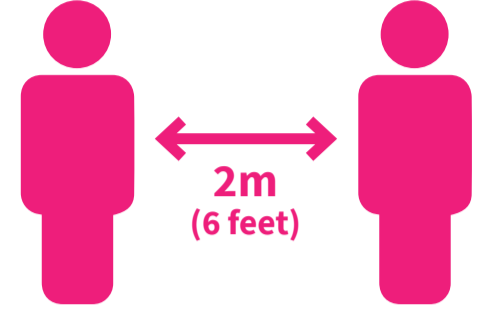
at Adult Community Education Centres



Sanitise your hands on entry/exit and regularly (including after coughing/sneezing, and before/after eating)



Wear your face covering in all shared areas, wear gloves as needed



Keep to a 2 metre distance, or 1 metre + a mask/visor where needed



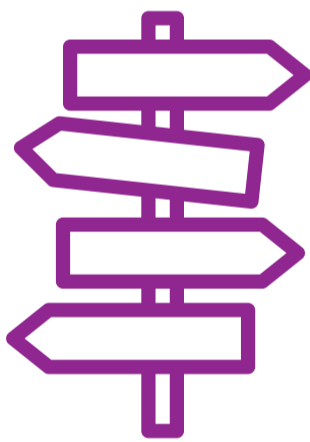
Don't attend if you feel unwell (cough, temperature etc.) and let us know



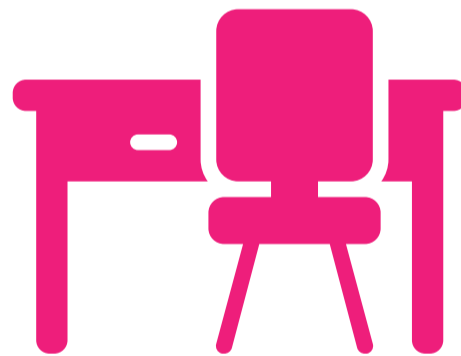
Let us know and go home if you become unwell during or after your course



Don't arrive earlier than 5 minutes before your session



Follow centre signs and one way systems



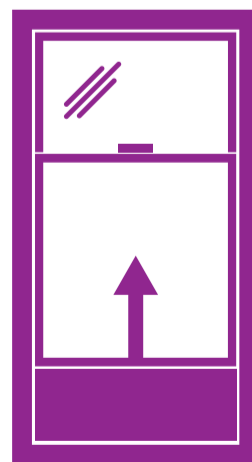
Keep to your allocated table and chair



Wipe table, chair and equipment before and after use, and report contamination/spills



Toilets are now all unisex. One person at a time



Leave windows open for air flow (you may need warmer clothes)



Kitchen and shared areas are closed. Bring your own food and drinks