

Improvement and Scrutiny

25 July 2013

Markham Vale

Peter Storey - Head of Markham Vale



Why undertake the project?

High unemployment

High Deprivation Index

Lack of attractive and accessible
industrial sites

Environmental damage

Therefore the Objective is simple

Create 5000 accessible jobs in a
sustainable environment



Markham Colliery



Markham Vale

Figure 1.3b: Aerial photograph of Markam Colliery and Development plots



Development

Development Platform –

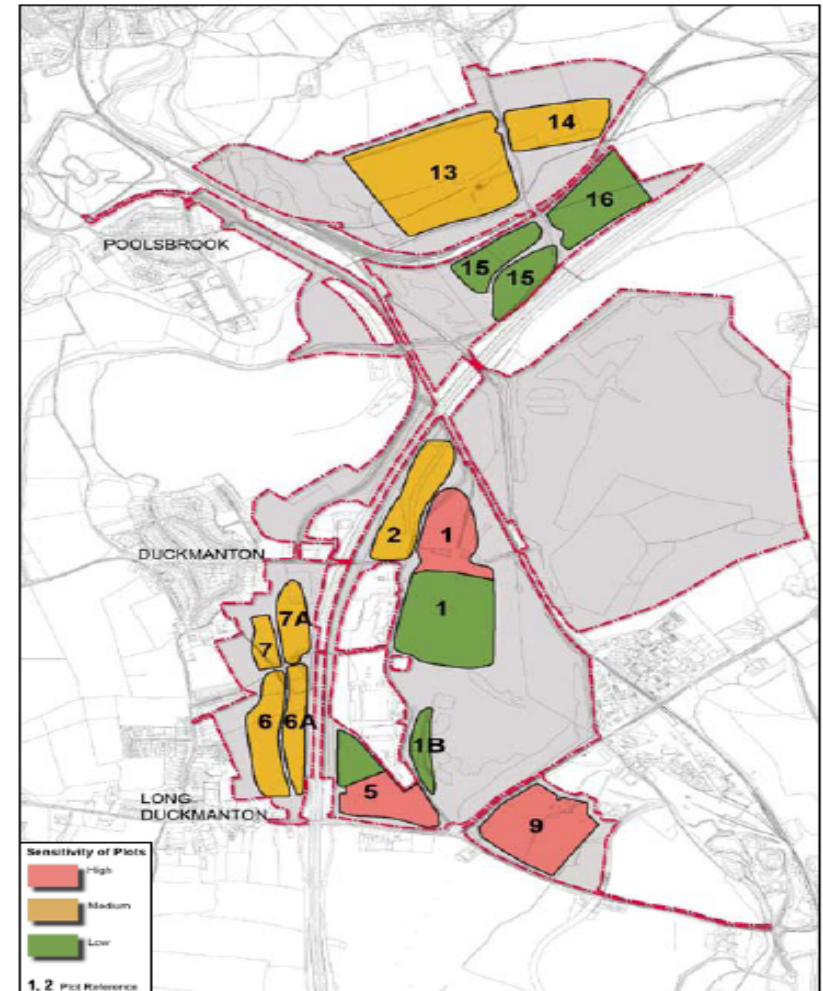
80 hectares (200 acres)

Office - 25000 sq m

Manufacturing - 60000 sq m

Distribution - 180000 sq m

Hotel



Design



Markham Arts

- Eco Gateway
- Mining Memorial
- Community
- Others

'Walking Together'



One hundred steel figures symbolise a miners journey to the pit - and back home again.

A trail of walking figures connect Duckmanton and the heart of the new Markham Vale industrial area.



Occupiers

- Andrew Page Ltd, Holdsworth Foods, Industrial Ancillaries, MSE Hiller, Banana Shoes, Chesterfield College, KWO Tools, McDonalds, Intervene, Squadron Medical, Total Cellar Systems, High Peak Scaffold
- Environment Centre
 - 14 Office/Workshop Units
 - 6 Hot desks/small business start ups
 - Conference/meeting facilities
 - Training facilities
 - Management suite (including CCTV)
 - Phase 2



Jobs

- Latest Survey = 357 fte
- New Occupiers
 - Ready Egg 50 jobs
 - Holdsworth Foods 10 (growing to 30)
 - Eurogarages 63
 - Costain (200 temp for 2 years)
- Workforce Recruitment and Training Service
 - Job Centre Plus
 - Connexions
 - Employers



Next steps

- HS2
- Seymour Link Road
- Improvements to Erin Road
- New Occupiers
- Seymour development plots
- Branch Line
- Staveley Northern Loop Phase 2
- Others ?



Plots 6 and 7 visualisation





MARKHAM VALLEY

AN ENVIRONMENT FOR SUCCESS