

ANNUAL REPORT AND PRIORITIES 2014-2015



**Safeguarding
Children**
Everybody's Business

DSCB Annual Report 2014-2015

CHAIR'S FOREWORD

Welcome to Derbyshire Safeguarding Children Board's annual report for 2014-15. This is a public report which sets out the work of the Board and its understanding of the effectiveness of safeguarding arrangements across the county. It is intended to inform the decisions made by the leaders of services and those who fund and commission local services. This report also aims to give everyone who lives and works in Derbyshire a sense of how well local services and people in the community are working together to keep children safe.

Some of our work is undertaken jointly with Derby Safeguarding Children Board, which I also chair. A number of our partner agencies cover both city and county areas and children of course cross the city county boundary daily for school or for leisure activities. It is therefore important that the two Boards work closely together and that we have the same policies and procedures for protecting children.

The report sets out the work of the Board during 2014-15 and the impact of that work on local services and therefore on children and families. Our priorities were on child sexual exploitation, children affected by parents involved in substance misuse, children misusing substances and emotional health and wellbeing. We have evidence of improvements in these areas, but there is more to be done to protect children from sexual exploitation and from emotional harm. These will be our main focus for 2015-16.

Derbyshire Safeguarding Children Board is constantly looking for ways to increase its effectiveness in making children safer. I would like to acknowledge the commitment of staff across all agencies in supporting the work of the Board to achieve this aim.

Christine Cassell

Independent Chair

DSCB Annual Report 2014-2015

CONTENTS

- 1. Chair's foreword**
- 2. Contents**
- 3. Executive summary**
- 4. Introduction**
- 5. About DSCB, the statutory and legislative context**
- 6. Progress and outcomes of priorities 2014-2015**
 - Child Sexual exploitation and E safety
 - Children and Young People Affected by Parental Substance Misuse
 - Children and Young People Misusing substances (including legal highs)
 - Emotional well-being of children and young people (including self-harm and suicide)
 - Children and young people affected by domestic violence
 - To ensure the effectiveness of the Board is outstanding, to safeguard the children and young people of Derbyshire
- 7. Priorities for 2015-2016**
- 8. Governance arrangements of DSCB-progress during 2014-2015**
- 9. Monitoring the effectiveness of local work to safeguard and promote the welfare of children in Derbyshire-the work of DSCB sub-groups 2014-2015**
- 10. Derbyshire-local background and context**
- 11. Performance information and analysis on Derbyshire's children involved with safeguarding agencies**
- 12. Appendices**

DSCB Annual Report 2014-2015

Executive Summary and Statement on Effectiveness

The information in this report details the work of Derbyshire Safeguarding Children Board in co-ordinating and assuring the effectiveness of safeguarding across the county. The full report sets out the detail of how the Board has gathered information from looking at records from individual children or young people or groups of similar cases to find out how well services helped to keep children safe. The Derbyshire Safeguarding Children Board also gathers information from reports that have been produced by different agencies that describe in detail how their service has helped keep children and young people safe.

The report provides evidence of good partnership working and commitment to the work of the Board and to improving safeguarding practice.

There is good engagement with young people in strategic planning through the Children's Trust and the DSCB, but there is a need to improve the ways in which vulnerable children are involved in decisions about their lives, for example, by increasing the number of children attending conferences about their needs.

An area for improvement has been the first contact with children's social care. This is being significantly revised and 'Starting Point' will begin operation in late summer 2015. The aim of this new 'front door' to services will be to make sure that the right decisions about the help that is needed are taken quickly on the basis of immediately available information from and discussion across key agencies.

The Board's audit activity indicates that decision-making and the application of thresholds for support is good in the majority of cases. There is evidence that early help is perceived by families to be useful, that cases are referred when necessary to social care and that early help services are taking on cases when social care intervention has been successful in reducing the level of need. The DSCB will be seeking further evidence of the impact of early help on children's lives and will continue to impress those making decisions about services to maintain early help provision.

The numbers of children who receive support from children's social care as a 'child in need' has increased but the numbers of children on child protection plans has reduced slightly. The main reason recorded for a child protection plan is emotional abuse, which is one of the reasons for the priority being given to emotional wellbeing in Derbyshire. Other concerns regarding emotional health and wellbeing arise from the statistics on self-harm and suicide in young people.

Significant progress was made during 2014-15 in improving the response in Derbyshire to child sexual exploitation. Practitioners and children themselves are more aware of the risks and professionals are making better decisions about children's needs. There is much more to be done to protect children from CSE, and CSE, together with missing children and e-safety remains a high priority for the safeguarding children board.

During 2014-15 the Derbyshire Safeguarding Children Board carried out one Serious Case Review and one Learning Review. The recommendations from these reviews have been

shared with professionals across all agencies and the Derbyshire Safeguarding Children Board will check that the recommendations have led to improved practice.

The two main priorities for the Board for 2015-16 will be:

CSE and E safety: we will work jointly with partners in the prevention of, and protection from, issues of child sexual and online exploitation;

and

Emotional health and wellbeing: we will ensure support provided to children and families affected by self-harm, suicide and substance misuse is effective, and that an awareness raising and educational campaign about the risks is developed for professionals, parents and young people.

Work will also continue on the following areas:

- Children and young people affected by parental substance misuse
- Children and young people misusing substances (Inc. legal highs)
- Children and young people affected by domestic violence

DSCB Annual Report 2014 to 2015

INTRODUCTION

This annual report will describe the work of the Derbyshire Safeguarding Children Board (DSCB), its sub groups and partners for the year 1st April 2014 to 31st March 2015. It will include information as to why local safeguarding boards exist and what is their primary function. Later the report will explore what DSCB has achieved over the last year in terms of its safeguarding priorities and what difference this has made to the children and young people of Derbyshire, and their families. Finally, the report will provide information on safeguarding in the county with some brief analysis as to what impact this has had on the families our member agencies try to support.

About DSCB, the statutory and legislative context

Derbyshire Safeguarding Children Board (DSCB) was formally established in April 2006 in response to the requirements of the Children Act 2004 and its accompanying guidance at the time, 'Working Together to Safeguard Children' (2006). DSCB has a range of roles and statutory functions, details of which are below;

The Derbyshire Safeguarding Children Board will:

- **Coordinate what is done by each person or body represented on the Board for the purposes of safeguarding and promoting the welfare of children in the area; and**
- **Ensure the effectiveness of what is done by each person or body for those purposes (Section 14 Children Act 2004)**

Regulation 5 of the Local Safeguarding Children Boards (LSCB) Regulations 2006 sets out that the functions of the LSCB, in relation to the above objectives under section 14 as follows:

1(a) Developing policies and procedures for safeguarding and promoting the welfare of children in the area of the authority, including policies and procedures in relation to:

(i) The action to be taken where there are concerns about a child's safety or welfare, including thresholds for intervention;

- (ii) Training of persons who work with children or in services affecting the safety and welfare of children;
- (iii) Recruitment and supervision of persons who work with children;
- (iv) Investigation of allegations concerning persons who work with children;
- (v) Safety and welfare of children who are privately fostered;
- (vi) Cooperation with neighbouring children's services authorities and their Board partners;
- (b) Communicating to persons and bodies in the area of the authority the need to safeguard and promote the welfare of children, raising their awareness of how this can best be done and encouraging them to do so;
- (c) Monitoring and evaluating the effectiveness of what is done by the authority and their Board partners individually and collectively to safeguard and promote the welfare of children and advising them on ways to improve;
- (d) Participating in the planning of services for children in the area of the authority; and
- (e) Undertaking reviews of serious cases and advising the authority and their Board partners on lessons to be learned.

Regulation 5 (2) which relates to the LSCB Serious Case Reviews function and regulation 6 which relates to the LSCB Child Death functions are covered later in this report.

Regulation 5 (3) provides that an LSCB may also engage in any other activity that facilitates, or is conducive to, the achievement of its objectives.

Working Together 2015 (Chapter 3: 16) states that the Independent Chair of an LSCB must publish an annual report on the effectiveness of child safeguarding and promoting the welfare of children in the local area.

This report is the Annual Review of the work of DSCB for the business year 2014-2015 and a reflection of how our priorities have been progressed. It is a rigorous and transparent assessment of the performance and effectiveness of safeguarding in Derbyshire. The report will demonstrate the contributions made by DSCB partner agencies toward the work of DSCB and **most importantly what difference has been made to the lives of children and young people within the county.**

It will provide the public, practitioners and main stakeholders with an overview of how well children in Derbyshire are protected, and identify any gaps in service development and challenges ahead for the coming year.

The report considers the priorities set within the DSCB business plan for 2014-2015, progress against these priorities, and areas for further development. The priorities for 2014-2015 were streamlined to reflect the overall ambition for DSCB to meet the requirements of an “outstanding Local Safeguarding Children Board” to safeguard all children and young people in our area. This was the headline priority, supported by other priorities shown below. These priorities were built on and expended earlier progress.

- **Headline priority:** to ensure the effectiveness of the Board is outstanding, to safeguard the children and young people of Derbyshire
- **Priority areas of focus:**
 - CSE and E safety
 - Children and young people affected by parental substance misuse
 - Children and young people misusing substances (Inc. legal highs)
 - Emotional well-being of children and young people (including self-harm and suicide)
 - Children and young people affected by domestic violence

The DSCB business plan is reviewed regularly by the DSCB Core Business Group. The plan contains details of progress against priorities, which DSCB sub group is responsible for actions, and impact and outcomes as a result of completed work.

Progress and outcomes of priorities 2014-2015

Child Sexual Exploitation (CSE) and E Safety

Our strong links with Derby City LSCB including sharing of safeguarding procedures and some key partner agencies led to the agreement of a joint City and County CSE strategy. It is a comprehensive document, focusing on prevention, protection and prosecution. Key principles include partnership working with parents and other professionals; cross county working; and recognizing links to other issues such as missing episodes and substance misuse. Separate action plans have been retained for each area and the CSE steering group regularly reviews progress of ongoing work. The DSCB CSE action plan was reviewed and updated after the Jay Report, which was an independent inquiry into practice in Rotherham from 1997-2013, to ensure actions were robust and young people were being appropriately safeguarded.

There has been ongoing development of safeguarding children policies and procedures – a new chapter, Safeguarding Children Abused through CSE, has been drafted and added to the online procedures. This raises practitioner awareness of the CSE Risk Assessment Toolkit

and the Operation Liberty form, which is the mechanism by which information and possible intelligence regarding CSE can be shared with the police in Derbyshire. The chapter identifies actions that should be taken in relation to each level of risk, and is clear that all levels of risk require some response.

An e-safety strategy was developed in recognition that online abuse is a growing issue. The strategy states that “all young people who have been the subject of indecent images or sexual exploitation...will be protected from further abuse and given appropriate support.” An action plan is agreed and we accept there is much to be achieved in terms of this form of exploitation. Our CSE audit work this year and the *Chelsea’s Choice* schools project (see below) have highlighted that online abuse is a major concern nationally and locally therefore this will remain a high priority for DSCB.

The Derbyshire Child Sexual Exploitation Guidance and Toolkit for professionals was implemented this year. The purpose of the guidance and toolkit is to enable professionals to use the concerns they have about a child, and use presenting indicators as a means of assessing their level of risk of child sexual exploitation in a quick and consistent manner. The guidance aims to help agencies to:

- Identify and protect those at risk of being sexually exploited at the earliest opportunity
- Develop local prevention strategies
- Take action to promote the welfare of children and young people who are or may be sexually exploited
- Take action against those intent on abusing and exploiting children and young people in this way

The guidance is comprehensive, including suggestions for intervention, disruption techniques, and sources of further guidance. This will be used by practitioners and inform good practice, which in turn will benefit the young people affected by CSE.

We have facilitated CSE awareness training to practitioners. In addition to the multi-agency programme being run by the DSCB training team, practitioners have trained across the county at a CSE introductory level, in a collaboration between DSCB and Safe and Sound the voluntary CSE specialist organisation. Between December 2013 and February 2015, a total of 560 multi-agency practitioners attended this training, and as a consequence 560 professionals now have a greater awareness of CSE indicators and how to act when these are recognised.

The training of CSE Leads across all DSCB agencies was completed for the first 60 professionals nominated as Leads– the role and remit of the CSE Leads is currently under consultation, but the 60 professionals have been trained to an advanced level to enable them to support and advise other colleagues regarding CSE. The role will be officially launched in the early summer with a CSE Leads seminar,

followed by promotional materials being issued to ensure maximum publicity across agencies in order that professionals can utilise the advice and support from their Lead colleagues.

Preventative work for young people continues to be a priority for DSCB. *Chelsea's Choice*, a preventative programme for schools run by the Alter Ego theatre company, was delivered to schools across the county for a total of seven weeks from November to December 2014 and February 2015. This was a joint initiative funded by the DSCB, Derbyshire Community Safety and the Derbyshire Police and Crime Commissioner. 53 schools and other settings (including special schools and support centres) took part, with a total of 75 performances for mainly year 8 students. This included a performance for out of school tutored/electively home educated young people and supporting staff/adults. The total audience figure was 7350 young people. All performances were attended by representatives from Derbyshire Police and Safe and Sound, the Derby based CSE specialist voluntary organisation, to offer immediate support for young people and staff, if required, and signposting for additional queries. To coincide with this CSE awareness raising for Derbyshire's young people a parent and carer CSE information leaflet was developed by DSCB and Safe and Sound. This awareness for parents and carers was circulated widely by schools and added to school websites and other forums for future reference. For the period of the productions, Derbyshire Police hosted an online virtual surgery in the evenings, which was offered as an additional resource to young people who may have wanted to speak further to a professional regarding CSE or other issues.

The impact of this programme can be illustrated by the fact that there were 14 concerns/ disclosures from 11 of the schools who participated. The evaluations returned from schools also indicated an increase in the awareness of CSE knowledge among young people and the professionals working with them.

Initial feedback from young people regarding what was learnt included, *"never get involved in the wrong crowd and don't do things to please anyone else. Be yourself."* Another student said they had learnt *"not to get involved in bad relationships."*

Soon after the performance at one school the safeguarding lead told us, *"we hope this programme continues and goes on to educate young people about the risks of exploitation and how they can keep themselves safe online and make effective use of technology. The students greatly valued the message being delivered by a 'younger group' of professionals and we felt it accomplished exactly what we had hoped for."*

A follow up evaluation is scheduled for the summer of 2015 and will be reported to DSCB via the CSE sub group. Feedback from young people indicated that e-safety is a major concern for them. E-safety has therefore been given a higher profile as part of the CSE strategy. Another positive outcome of the whole *Chelsea's Choice* project is the sustained impact it appears to have had on a large range of people, from young people/ school staff and other safeguarding professionals, many of whom continue to speak about the *Chelsea's Choice*

messages which have been embedded. A number of county schools have commissioned the performance themselves to enable their other students outside of the project's original age range, to benefit from the awareness the production provides.

In support of this awareness raising of CSE for young people, teachers and other school staff had the opportunity to attend curriculum training to ensure the messages relating to CSE were sustained in schools and could be revisited as part of other personal, health and social education (PHSE). A resource to support the curriculum delivery of children's sexual exploitation in Derbyshire's secondary schools has also been developed and shared. This continued activity relating to CSE demonstrates the commitment in Derbyshire to sustain the positive steps already taken to raise awareness with both young people and professionals.

DSCB has also continued to audit the work being delivered regarding CSE. Over the last year the Board commissioned an independent audit into practitioner responses to children and young people at risk of CSE in the Derbyshire area. This built on the previous audit in 2013-2014, which had considered practitioner responses to incidents of looked after children missing from care where CSE was a possible factor. The focus of the audit, which commenced in November 2014, was a more detailed examination of practitioner responses to CSE across Derbyshire, and assessment of the impact of the CSE strategy and procedures. Another aspect of the audit was to examine if practitioners challenged poor practice relating to exploitation, both within their own service areas and with other services. This was considered as a specific practice issue following on from the Jay report 2014. It was of particular importance to senior managers in the Council and other Board partners to examine whether staff in Derbyshire were aware of whistleblowing and complaints procedures, and felt able to utilize them.

The audit concluded there has been an improvement in practice responses to CSE in Derbyshire since the 2013 audit. There is better recognition of indicators, and more often than not appropriate practice decisions are being made. There is evidence of good practice, strategic thinking and partnership working. The areas that need focus and attention are those areas that largely follow on from being able to identify CSE – effectively working with risk, preventative work, partnership working including parents; innovative approaches to gathering information, strategic approaches including disruption; effective support and interventions for victims. What was observed during the 2014-2015 audits was a commitment on behalf of a number of practitioners and strategic leads to drive this practice area forward and towards excellence. Recommendations from the audit have been added to the CSE action plan which will be discussed further later in the report.

The Board has continued to work closely with the Derbyshire Community Safety team regarding awareness of CSE issues in the wider community including licensed premises and taxis. The Say Something if you See Something campaign (SSSS) is a joint initiative which seeks to equip local businesses and communities with tools for identifying and responding to children who need protection from exploitation. Plans are in place to launch SSSS which will ensure the wider public have the information and confidence they need to be proactive in identifying and acting upon concerns they might have.

Regarding trafficking, Derbyshire is one of 23 local authorities engaged in a government trial of new independent, specialist advocates for child trafficking victims. This project, which began in September 2014, is due to last one year and is in collaboration with the University of Bedford and Barnardos. The trial will test two different approaches simultaneously in each local authority. The first will build on existing local authority structures, which in Derbyshire include independent advocates who are provided on request to looked after children. The second approach being tested will involve the commissioning of an independent service separate from the local authority with Barnardos awarded this contract. Progress will be reported into the DSCB CSE steering group. Involvement in this project demonstrates a willingness in Derbyshire to be involved in new initiatives and to be transparent in assessing on the effectiveness of practice.

The DSCB's action overall regarding CSE throughout the last year reflect our commitment as a Board to ensuring responses to CSE, whether in prevention, protection or prosecution, will continue to be robust and reactive to the changing landscape of child exploitation.

Children and Young People Affected by Parental Substance Misuse

Following a DSCB serious case review in 2013 which involved the death of a child who ingested Methadone in the home, a task and finish group of multi-agency partners have worked together to implement and facilitate actions identified within an agreed strategy for improving outcomes for children with parents/cares engaged with Opiate Substitution Therapy (OST) services. The work of the group concluded early in 2015 with the following improvements made:

- The importance of the "Think Family" approach has been raised with partner agencies;
- Data collection on parents/cares on OST has been improved;
- A multiagency strategy has been produced and implemented;
- The *Kick-start Programme focused on improving resilience and self-efficacy for substance misusing parents* and has been piloted with one course for women in Chesterfield and is awaiting a decision to roll this out across Derbyshire;
- A joint pathway for routine information sharing between OST workers (DHCFT) and Health Visitors with Derbyshire Community Health Services Foundation Trust has been established;
- A clear protocol and funding stream for hair strand testing in children has been established;
- The message about the ambition of DSCB to increase the safety of prescribing methadone and other medications in family homes where there are children under the age of 5 years is being communicated;

- Staff training for key groups of staff and DSCB multiagency training events have taken place and will continue. All Health Visitors received training for OST in 2014;
- Information Leaflets have been updated.

Another serious incident learning review from 2013/14 highlighted related issues of parental substance misuse and the impact on children. Recommendations from this review are being implemented and the learning shared through partners.

Children and Young People Misusing substances (including legal highs)

In the last year a Derbyshire young person tragically died after misusing substances and a serious incident learning review has just completed regarding the services the young person and family received.

A recommendation from the review centres on the need for the development of an awareness raising and educational campaign about young people who abuse or supply drugs, both legal and illegal, for professionals, parents and young people. This should include use of the internet and referral thresholds and pathways, and should also highlight the dangers of drug use, especially at night or when alone

The intended outcome of this recommendation is that professionals and parents will be better informed about some of the ways in which drugs can be sourced, the nature of the drugs and risks associated and feel confident that they know the possible steps to take if faced with a concern. Young people will also be more aware of the risks of drug use, which may prevent their involvement with both illegal and legal drugs.

Progress has already been made within the local area and particularly the school community of the deceased young person with a drugs awareness event taking place very soon after the incident. However there is still much further action to be taken.

A positive link has been made relating to this priority with the Derbyshire T3 Young People's Substance Misuse Service, which is contracted to deliver services by Derbyshire County Council and works closely with a number of DSCB partner agencies. T3 has been able to offer expert support and guidance on a number of complex drugs issues, including the learning review above and this will continue to ensure the work against this priority is effective and sustained.

Emotional well-being of children and young people (including self-harm and suicide)

During 2014/15 there has been at least one suicide of a young person and a seemingly growing trend of young people who are harming themselves in a variety of ways. During 2014/15 a group working with the Children and Family Mental Health Services (CAMHS) have been

working with multiagency partners to provide a clear pathway to support best practice for working with children and young people who have been identified to be harming themselves. This pathway is awaiting sign off by Derby and Derbyshire Safeguarding Children Board (DSCB) Policy and Procedure Group and will be implemented through 2015/16.

There have also been a number of initiatives, which will continue in 2015/16;

- Multiagency training sessions through DSCB
- Information leaflets and other materials to raise awareness
- Improved data collection of data to support service developments
- Review of CAMHS service provision, and promotion of referral criteria
- Improvement of information sharing arrangements with schools
- Guidance for staff to support their work with children and young people who are at risk of self-harm.

The DSCB serious case review subcommittee has been concerned at the number of suicides, including of young adults (age just 18+) and has commenced a preliminary enquiry into numbers and comparisons with statistical neighbours, supported by public health colleagues.

The apparent rise of self-harm, supported by data that emotional abuse continues to be the main category for child protection plans in Derbyshire, is a concern. which been raised with both the Health and Wellbeing Board and the Children's Trust. As a result of those discussions, the emotional health and wellbeing of children and young people is a shared priority for the county.

Children and young people affected by domestic violence

During the last year a more formal mechanism for the Joint Chair of the City & County Domestic Abuse and Sexual Violence Governance Board has now been agreed leading to a better exchange of information between the two Boards. This provides a twice yearly update about the work taking place in relation to domestic abuse and sexual violence across the county and enables Board members the opportunity to scrutinise and challenge the report in relation to children and young people who are affected by such violence.

To ensure the effectiveness of the Board is outstanding, to safeguard the children and young people of Derbyshire

This headline priority incorporates all the work of DSCB against the priorities and progress outlined above, and the areas included in the DSCB business plan. Achievements and outcomes, and any areas for development relating to the headline priority will be reflected throughout the annual report.

Priorities for 2015- 2016

Work will continue against all the priorities as discussed above and in the business plan (at appendix A).

However, due to developments over the last 12 months, for the next year DSCB will highlight two main priorities:

CSE and E safety: we will work jointly with partners in the prevention of, and protection from, issues of child sexual and online exploitation;

and

Emotional health and wellbeing: we will ensure support provided to children and families affected by self-harm, suicide and substance misuse is effective, and that an awareness raising and educational campaign about the risks is developed for professionals, parents and young people.

Governance arrangements of DSCB; progress during 2014 to 2015

The full Derbyshire Safeguarding Children Board meets quarterly and maintains the strategic lead in monitoring the effectiveness of the protection of children and young people across Derbyshire. A structure chart for DSCB is at Appendix B.

The DSCB Core Business group (previously named the Executive Group) is made up of key agencies of the Board and is chaired by the Independent Chair of DSCB. The group meets between full Board dates, to ensure a focus is retained on Board priorities. The main function of the Core Business group is to provide regular and robust oversight of the Board's business plan and budget, and to oversee planning of future Boards. The Core Business Group was reviewed during the last year to ensure its purpose and function was effective. Minutes of the Core Business group are routinely shared with all Board members. A positive outcome for the Board is the additional scrutiny which can now be given to the business plan and budget by the Core Business group, and assurance for the wider Board membership that this is regularly taking place.

A joint Chief Officer group for both County and City Boards now meets twice a year. The purpose of the Chief Officer group is to review the effectiveness of the safeguarding systems across Derby and Derbyshire and to reflect on the functioning of the LSCBs. Meetings provide an opportunity for all Chief Officers of organisations with a responsibility for safeguarding children and young people, to examine and challenge their effectiveness. Another main focus is for Chief Officers to identify key budget and/or organisational change within their own organisation and, where appropriate within other organisations, which will have an impact on safeguarding. The inauguration of the Chief Officer Group demonstrates the commitment of DSCB to ensure that safeguarding is a priority at the highest strategic level across all of our member agencies.

- **Partnerships**

Links between DSCB and the Children's Trust Board have continued this year with regular attendance by the DSCB Independent Chair and liaison regarding priorities and sharing of initiatives. The Locality Planning and Commissioning Partnerships (LCPCs) across Derbyshire report into both DSCB and the Children's Trust, for example at each DSCB meeting a representative of an LPCP gives a presentation to members highlighting actions taken by their LPCP relating to DSCB priorities and any emerging themes for the specific locality. This enables members to scrutinise locality safeguarding responses and to ensure priority areas are being sufficiently addressed.

The DSCB relationship with the Health and Wellbeing Board has improved this year with a reciprocal reporting arrangement between Boards. Attendance and communication has continued with the Derbyshire Safeguarding Adults Board, particularly in terms of sharing Board processes, and presenting learning from serious case reviews. However, further liaison is required to ensure serious cases involving young people in transition between children's and adult services are not overlooked.

A joint protocol has been agreed this year between DSCB, the Children's Trust, the Health and Wellbeing Board and the Derbyshire Safeguarding Adults Board which outlines the links and lines of communication between the four Boards. The DSCB annual report is presented across all three Boards by the Independent Chair which provides an opportunity for scrutiny and challenge of the DSCB's progress.

- **DSCB membership**

DSCB continues to have senior representation from the key agencies with a responsibility for safeguarding children in Derbyshire. However a review of membership of the main Board has now commenced with oversight from the Independent Chair, and completion of this is a priority to ensure agencies are appropriately represented and that membership is consistent with requirements in Working Together 2015.

Sub group membership is also under review with sub group attendance being collated and analysed to make sure all organisations are represented and are participating in the multi-agency sub groups and committees which progress the work of the Board. There have been some challenges to attendance this year and the Board team continue to work with partners to address issues and find ways to enable meaningful contributions.

A summary of attendance at the DSCB and DSCB sub groups is at appendix B.

- **Budget**

Detailed scrutiny of the DSCB budget is a standing agenda item at the Core Business Group with oversight by the main Board. A summary of agency contributions and expenditure is at appendix D.

A positive outcome of the Core Business Group's monitoring of the DSCB budget during the last financial year was the decision to use the small underspend towards the DSCB's schools CSE awareness project involving the drama *Chelsea's Choice*. As a result of this, DSCB successfully linked with partners and secured joint funding from Derbyshire Community Safety and the Office of the Derbyshire Police and Crime Commissioner for what was a hugely effective project.

- **Lay members**

During the last year DSCB successfully recruited a lay member to operate as a full member of DSCB. As set out in Working Together 2015 the lay member *helps to make links between DSCB and community groups, supports stronger public engagement in local child safety issues and an improved understanding of the DSCB's child protection work*. In addition to attending and contributing to Board meetings the lay member has attended Child Sexual Exploitation training, and other development opportunities are being explored.

Recruitment of a second lay member is almost complete. An evaluation of the role will then be undertaken after six months.

Voice of young people

The involvement of young people in the work of DSCB has progressed slowly over the last 12 months but at year end a strong link had been made with the Derbyshire Youth Council: *YouthInc*, with plans to collaborate later in 2015 with a focus on E safety, which is *YouthInc's* headline priority. An agreement has also been reached for *YouthInc* representatives to consult on a Young People's summary of this DSCB annual report which can then be circulated widely to children and young people across the county.

Other initiatives for meaningful participation of young people include a follow up survey for a sample of students who were part of the *Chelsea's Choice* CSE project, to assess changes in responses 6 to 9 months after they saw the production. *Chelsea's Choice* will also be performed at the *YouthInc* annual conference in May 2015 with *YouthInc* and the Board joining together to share an open invitation to Derbyshire children and young people in care to join them for the performance and post event discussion.

- **DSCB newsletter**

In the last year a DSCB newsletter was introduced for wider distribution across the DSCB partnership and throughout the local safeguarding community. The newsletter is issued quarterly, within two weeks of each full Board meeting. It provides a summary of the areas and issues covered by the Board in an interesting format with links to additional information and reports. Early feedback has been encouraging. A positive outcome is that more professionals are made aware of the work of the Board and this may inform and assist their future practice.

- **Section 11**

Section 11(Children Act 2004) states “each agency to whom this section applies must make arrangements for ensuring that their functions are discharged having regard to the need to safeguard and promote the welfare of children”. Therefore the agencies of DSCB are required to undertake a section 11 audit to provide evidence to the Board that they are meeting their legal requirements. The collation of agency Section 11 audits has at times been problematic in terms of the method used and the realisation of some agencies that this is a statutory requirement. An electronic format was introduced this year, with the aim of simplifying the process, and its use will be evaluated. In total, after some delays eleven section 11 audits were returned. Headlines from the audit will be considered by the DSCB Quality and Performance to identify themes and areas where our safeguarding agencies may require additional support and guidance in meeting safeguarding standards.

- **Inspection and review**

The Board has been actively engaged with partners in terms of multi and single agency inspection and review. Board representatives have participated in focus groups for single agency reviews and inspections. Members of the Board sit on the Journey to Excellence (J2E) panel which is responsible for the local authority's response to the November 2013 Ofsted inspection of children's services and review of DSCB. A peer review of the Board is planned for later in 2015 to check out progress since the review and to examine where development is still required.

Monitoring the effectiveness of local work to safeguard and promote the welfare of children in Derbyshire

The work of our DSCB sub-groups during 2014 to 2015

This section sets out how the DSCB monitors the work of our sub groups, and their progress and effectiveness in safeguarding children in Derbyshire.

Child Sexual Exploitation Steering Group

The group was actively involved in the formulation of a new CSE strategy for the County. This group has driven the work on CSE, particularly the priority to raise the awareness of children to CSE (see earlier section for detail on the CSE strategy)

The *Chelsea's Choice* CSE preventative drama production for schools by the Alter Ego theatre company was delivered to schools across the county for seven weeks from November to December 2014 and February 2015. The CSE steering group was responsible in leading the planning of this project and linking with partners from Community Safety and the Office of the Derbyshire Police and Crime Commissioner. This successful project resulted in the outcome of over 7000 young people receiving direct CSE and e safety awareness in an innovative way. Initial evaluation was extremely positive and a follow up survey is currently underway to demonstrate the difference made and whether this has been sustained.

The CSE steering group reports progress regularly to the DSCB full Board where members have the opportunity to scrutinise its work. Developments nationally in the last year after the Jay report into Rotherham have been closely monitored and as a result the CSE steering group has been reviewed and some changes in terms of membership and representation have been made. These will be implemented through the summer of 2015.

Serious Case Review Sub Committee

The Local Safeguarding Children Boards Regulations 2006 includes the requirement for LSCBs to “undertake reviews of serious cases in specified circumstances. Regulation 5(1) (e) and (2) set out an LSCB’s function in relation to serious case reviews (SCRs), namely:

5 (1) (e) undertaking reviews of serious cases and advising the authority and their Board partners on lessons to be learned.

(2) For the purposes of paragraph (1) (e) a serious case is one where:

(a) Abuse or neglect of a child is known or suspected; and

(b) Either — (i) the child has died; or (ii) the child has been seriously harmed and there is cause for concern as to the way in which the authority, their Board partners or other relevant persons worked together to safeguard the child”.

Working Together 2015 states LSCBs should consider conducting reviews on cases which do not meet the SCR criteria. The DSCB refers to these cases as serious incident learning reviews (SILRs). Working Together 2015 is clear that the LSCB should oversee implementation of actions resulting from these reviews and reflect on progress in its annual report.

The DSCB SCR sub committee meets bi-monthly unless an additional extraordinary meeting is required due to an urgent new case for consideration. The sub committee is independently chaired by a Service Director from Derby City Council under a reciprocal arrangement. A sub group of the SCR sub committee is the SCR Action Plans group, which has responsibility for the oversight and monitoring of recommendations and actions from all SCRs and SILRs in which DSCB is involved. Membership is a small multi agency group of professionals from the SCR sub committee who meet bi monthly to scrutinise progress and evidence on recommendations, and sign off recommendations when agreed as complete. The SCR Action Plans group reports regularly to the SCR Sub Committee.

There was 1 SCR and 5 SILRs commissioned between April 2013-March 2014 with the 6 reviews generating a total of 48 recommendations for agencies. These have been monitored by the SCR Action Plans group.

- 24 recommendations have been signed off by the group as being fully implemented with evidence obtained and secured;
- 9 recommendations are in the process of being implemented and evidence is being submitted;
- 15 recommendations are yet to be implemented and the SCR Action Plans sub group will work to progress these in the coming months.

In the year 2014 to 2015 the DSCB commenced and concluded one SCR and one SILR. The sub group was involved in another SILR in Derby LSCB area (see below) and the DSCB also published a SCR of a death of a young person in 2012.

SCR ADS12 involved the death of a young person in a young offenders institute located out of Derbyshire. The young person was suspected of taking his own life. The delay in publication was due to the lengthy Prisons and Probation Ombudsman independent investigation, and inquest. All recommendations from the SCR overview report had been implemented prior to publication, and the family were contacted and the report shared with them.

SCR ADS14 involved the death of a one year old in 2014, with physical abuse suspected. The criminal investigation is not yet complete for this child's death therefore it is not possible to include further details. However, learning from the case is already being shared across agencies and authorities, due to the case's cross over between two LSCB areas.

ADS14 key learning included:

- Supervision Orders should be routinely shared with all professionals involved once they are made. All staff must be clear what their role is when working with a child on an Order;
- When children move across areas, those professionals involved with them are responsible for informing their counterparts in writing in the receiving area of the transfer and components of any plan;
- DSCB should consider how assessments will be undertaken when vulnerable families are housed. Assessments need to consider the risks associated with housing and its suitability for young children;
- Supervision of professionals should always include discussion regarding client's levels of engagement.

SILR14B involved the death of a young person of a suspected drugs overdose. Although the circumstances surrounding this incident did not meet the Working Together criteria for a SCR it was agreed by the DSCB Independent Chair that agencies could still learn from a formal review of how services worked together in trying to support the young person and the family. At time of writing this review was being presented to DSCB for formal sign off.

The key learning included:

- An awareness raising and educational campaign about drugs, both legal and illegal, is required for professionals, parents and young people. This should include use of the internet and also highlight the dangers of drug use;
- Professional knowledge and understanding about referral thresholds and pathways for young people who abuse or procure drugs should be strengthened;
- DSCB should continue to actively encourage the use of Early Help Assessment with all agencies and should scrutinise numbers initiated, taking action as appropriate to further promote its use.

The Board has used the Welsh Child Practice Review (CPR) methodology for the SCR and learning review conducted this year. The Board has received positive feedback in terms of the effectiveness of this model in engaging practitioners in the learning, disseminating learning rapidly. It has also proved an efficient and cost effective model, which the Board will continue to use where it is proportionate to the case in question. Derbyshire and Derby LSCBs have collaborated to train a pool of reviewers to be available to undertake reviews as required and when appropriate.

In the last year a Health professional and member of DSCB SCR sub committee has completed the lead reviewer position for a CPR (SILR) for Derby LSCB, with the Board Manager of DSCB as chair of the review panel. **SILR SM13** involved the familial sexual abuse of a young person, with key learning for both DSCB and Derby LSCB.

The DSCB continues to promote the CPR model across the LSCB network. As a result of the positive feedback and experience relating to the model, DSCB has used the CPR principles in other reviews of safeguarding issues in Derbyshire, including CSE.

Other areas of work for the SCR sub committee this year have been the updating and re issue of information materials (posters and leaflets) regarding current SCR and SILR learning themes in the county. A supporting supervision checklist is in draft to assist managers to include SCR/SILR themes in supervision meetings which will ensure key messages are shared and discussed, and that this can be evidenced.

DSCB has used an e learning package to disseminate information from Serious Case Reviews and other learning reviews to staff across agencies. The take up of the package has been monitored. And found to be relatively limited (146 from 31st March 2014 to 1st April 2015). The Board will in the coming year compare the effectiveness of this approach alongside that of other forms of dissemination on staff practice.

Workforce sub group

This joint Derbyshire and Derby City sub group carries out the requirement of DSCB to scrutinise arrangements for maintaining a safe, sufficient and effective workforce. Initial workforce capacity reports were obtained at the end of 2014 and provided early indications of the challenges arising to some partner agencies over a short period within the year. It was decided that figures for a full year should be obtained from all relevant agencies and scrutinised in detail. The Workforce sub group commissioned capacity reports in respect of key front line roles including front-line social workers, police officers (Public Protection Unit), community midwives, school nurses, health visitors.

Workforce sub group partners will present their reports at the joint Workforce sub group meeting in July 2015 and a summary of the relevant issues will be provided to both Derby and Derbyshire Safeguarding Children Boards in September 2015.

Training Providers Sub Group

The Derby and Derbyshire Safeguarding Boards Training Providers Sub Group, has been meeting quarterly over the past year, reporting into the Derby and Derbyshire LSCBs Workforce sub group. The following has been achieved:

- The Introduction to Safeguarding e learning package has been completed by 291 people since going live on the DSCB website in October 2014 -this is a joint Derby City and Derbyshire training resource at aimed at Level 1/ Level 2 staff, volunteers, parents or young people.
- The group have been implementing the recommendations from the independent review of safeguarding training which was completed in 2014.
- A training strategy was produced to provide a steer for the work of the group
- A review of the Derby and Derbyshire multi agency training programme was completed which streamlined training programmes, considered different methods of delivery including e learning where possible, and provided standardised course titles. Improved accessibility via the DSCB website was also achieved. The impact is a better experience for all staff in accessing and researching multi agency training which is offered in the most accessible and cost effective way.
- A training validation scheme has been approved to validate safeguarding training materials through a training validation panel which will assist in the quality assurance of training endorsed by the DSCB.

The number of courses on offer via the multi-agency programme has been reduced to achieve agreed savings but 71 courses have still been delivered with 1,297 participants. It is encouraging that school safeguarding courses have increased with 74 courses being run for either whole school courses or courses for Designated Safeguarding Leads/Governors, with 1,838 participants.

The telephone evaluation trial which commenced during last year continued from April to September with 9 courses followed up. 31% of the participants were asked if they had put any learning into practice as a result of the training and 85% responded yes which demonstrates a positive impact on practice from the courses attended. Examples of comments include *“following the course I attended a TAF (team around the family) meeting and because my awareness had increased alarm bells went off whilst a parent was sharing information in terms of possible indicators. I think if I had not attended the course I may not have thought about the possible link”,* and *“I’m more able to ask questions and challenge”*.

Quality and Performance sub group

The annual audit plan was updated and is regularly reviewed by the Quality and Performance membership to reflect DSCB priorities, actions in the DSCB business plan and emerging themes for safeguarding and the county. In September 2014 a multi-agency audit day took place with partners from six different agencies working together in the joint review of cases via the Children’s services recording system. 26 cases were examined relating to children on child protection plans. Areas scrutinised were thresholds, assessments, decision-making, and quality of plans, reviews and core groups. In addition 40 initial contacts to “Call Derbyshire” the Derbyshire County Council

front door, were also reviewed with a focus on decisions and actions. The overall evaluation and whether the decision-making was at the expected standard were positive in 39 cases.

The Section 175 (Education Act 2002) Safeguarding Audit for schools/colleges including academies, and independent schools is reported into and scrutinised by the Quality and performance sub group. The introduction of the Child Protection Manager for Education role for the County to support the audit has provided significant increase in returns with a total of 132 returns from April 2014 to March 2015 and this is still increasing. A revised format is used which incorporates the DSCB's performance indicators, and a completed action plan with safeguarding priorities for the next academic year is requested including how education settings will achieve these.

Highlights include 132 schools providing evidence of an overarching child protection/ safeguarding policy for their school which is up to date, and only 5 schools declaring not having a staff code of conduct and one which covers safer working practices (but this has been addressed). 72 schools can evidence they apply a protocol around students missing from education and have an understanding of the links between missing and increased risk, the remainder are developing this. 7 secondary schools of the 15 secondary returns can evidence that they are now using a planned CSE programme, and that they include in their sex and relationship teaching the sensitive issues of child abuse, pornography, social media and cyber bullying. The remainder are working on this and the DSCB CSE awareness project *Chelsea's Choice*, in all County secondary settings in the last year, has helped to ensure this is a key priority for all schools.

Other partner agency safeguarding inspections and audits are routinely reported to Quality and Performance including Children and Younger Adults District Challenge Day findings, and over the last year; Health Markers of Good Practice and a Police Child Protection peer review. These enable members to monitor the performance of partners and provide an opportunity for DSCB to be aware of single agency performance relating to safeguarding.

The DSCB performance reporting framework was reviewed and amended during the latter half of the year. The new reporting system is in its initial phase and is challenging some agencies requiring data to be provided on time and with supporting analysis to ensure information presented to DSCB is meaningful. The new framework and partners' evaluation of it will be monitored by the Quality and Performance sub group and the Board, to review its effectiveness in terms of providing key safeguarding information which will inform other areas of the Board's work.

The DSCB independent chair represents DSCB as a member of the Derbyshire County Council Performance Board, which meets regularly to scrutinise management information relating to children's services. This provides an opportunity for the DSCB to challenge senior representatives of children's services and the council on all aspects of safeguarding performance and request assurance when necessary.

Section 11(Children Act 2004) requires the agencies of DSCB to undertake a section 11 audit to provide evidence to the Board that they are meeting their legal requirements in terms of safeguarding arrangements (see governance arrangements earlier in the report). A different approach has been initiated this year for the Section 11 audits using an electronic *survey monkey* questionnaire. Themes and areas for development from the Section 11 audits will be reported into the Quality and Performance group and the difficulties for some agencies in completing their agency audit in a timely way will be examined.

Child Death Overview Panel

The fifth Derby City and Derbyshire County Child Death Overview Panel (CDOP) report will be presented to the DSCB in September 2015 covering CDOP activity for the period of January 2013 to the end of March 2015. This has been changed to enable reporting in line with the reporting of other DSCB activities and enable effective scrutiny of arrangements.

The CDOP report provides information on trends and patterns in the child deaths reviewed during the reporting period and makes recommendations to the two LSCBs and other relevant bodies such as the Health and Wellbeing Board based on the analysis and findings from these reviews. The report also provides assurance that CDOP is meeting its statutory functions as set out in Working Together to Safeguard Children Guidance (2015).

In the past year there have been improvements in the effectiveness of the work carried out by CDOP. This includes improved recording of actions and outcomes in specific cases, which was recognised as an area for development in the past. A lay member has also been recruited and is making an active and positive contribution.

The CDOP report illustrates the work that has been completed following the reviews of child deaths and examples include:

- Communications regarding car seats and dangerous dogs have been circulated;
- A campaign to raise the awareness of nappy sack dangers has been undertaken, with the support of the Royal Society for the Prevention of Accidents (ROSPA)
- Recognition that smoking in pregnancy (SiP) is a modifiable factor in child deaths reviewed by CDOP.
- Since 2008 the BabySafe group has been working hard to promote multiagency safe sleep arrangements for young babies to reduce sudden unexpected deaths in infancy. Work includes development of a safe sleep assessment tool which has been adopted by other areas, the production of LSCB guidance to support safe sleeping babies and infants, and LSCB guidance on the prevention of non-accidental head injury. Key messages about keeping babies heads' safe, and a parental education programme including a DVD called

“Shaking the Baby is just not the Deal” have been promoted. This is supported by the use of information leaflets and a commitment statement which parents are asked to sign as proof of completion of the programme and demonstrate commitment to keeping baby safe. Both programmes are fully supported by Health Visiting and Midwifery Services provided in Derbyshire and Derby City.

Policies and Procedures sub group

The joint Policies and Procedures group have reviewed and updated their terms of reference to strengthen requirements of agency membership and commitments. The group is now chaired by a professional from the community and independent sector.

Two significant revisions to the safeguarding children procedures were completed (one of which was brought forward) to ensure compliance with Working Together to Safeguard Children 2013 and other national guidance. This work involved:

- The development of a new procedure about trafficked children and updating of all the specific circumstances chapters, including the children at risk of sexual exploitation procedure, female genital mutilation, abusive images of children;
- Updated recording forms for network and core group meetings for multi-agency use, and;
- Development of a new Derby and Derbyshire Safeguarding Children Boards' Information Sharing Agreement and Guidance for Practitioners document to support effective information sharing.

The Policies and Procedures group will be revising procedures in the coming year to make sure that there is compliance with the revisions to Working Together to Safeguard Children, associated guidance published in March 2015 and guidance on radicalisation and extremism.

Derbyshire: Local background and context

Derbyshire is a two tier authority comprising of the county council and eight district and borough councils. There are five clinical commissioning groups (CCGs), two of which cover outside the Derbyshire boundaries due to their locality. A number of key agencies work in partnership across both Derbyshire and Derby City areas, including the Police, Probation and some Health providers. Therefore strong links exist between Derbyshire Safeguarding Children Board (DSCB) and Derby Safeguarding Children Board.

Demographic information

According to the 2013 mid-year population estimates which are the most recent to date, there are around 154,800 children and young people aged 0-17 in Derbyshire. This equates to 19.9% of the usual resident population. Of this number the proportion of 0-4 year olds is

5.4%, 5-15 year olds is 12.1% and the proportion of 16 and 17 year olds in Derbyshire is 2.5% (the percentages for the three age groups add up to 20.0% due to rounding of the decimal places).

The Child Well-being Index places Derbyshire within the top 20% of all Local Authorities in England. Yet, pockets of deprivation and severe unemployment have meant that the life chances for some children have been severely compromised. Approximately 16.3% of the Local Authority's children under the age of 16 are living in poverty. This compares with 19.2% in the country as a whole. The proportion of children entitled to free school meals in Derbyshire primary schools is 15.1% (the national average is 17.0%), and in secondary schools is 13.2% (the national average is 14.6%).

Minority Ethnic Population

School age children from minority ethnic groups account for 5.0% of all children living in the area, compared with 26.7% in the country as a whole. The largest minority ethnic groups of children and young people in the area are Mixed and Asian. The proportion of children and young people with English as an additional language in primary schools is 1.9% (the national average is 18.7%), and in secondary schools is 1.2% (the national average is 14.3%).

Disability

Estimates of the number of disabled children in the child population will vary widely depending on the definition of disability used. None of the various definitions are incorrect as the type(s) and severity of a disability can vary widely and a single definition would, of necessity, have to be very broad to encompass the many possible variations to being disabled. Some research suggests that around 6-7% of children are likely to be disabled ((i) Council for Disabled Children (CDC); (ii) Blackburn, Spencer, and Read, 2010) and 1.2% would be more severely disabled (CDC). Based on a population estimate of 155,100 children aged 0-17 in Derbyshire, between 9300 and 10,800 are likely to be disabled and around 1850 would be severely disabled.

Recent research by Parsons and Platt (2013) identified disabled children using 3 different definitions; this found that as many as 1 in 3 children might be disabled in some way, though a much smaller proportion of these (4%) were identified by all 3 of the different definitions. Applying this logic to children in Derbyshire, around 1950 would be disabled in multiple ways and this is similar to the estimate above for children likely to be more severely disabled.

Education

According to the January 2014 School Census, there were 107,491 pupils in Derbyshire Schools, therefore in daily contact with education professionals. This figure includes maintained nurseries, maintained primary and secondary schools, primary and secondary academies, special schools, pupil referral units and independent schools. Of these, 18,279 pupils (17.0%) had some form of Special Educational Need.

As at 31 January 2014, approximately 16,860 3 and 4 year olds in Derbyshire benefited from some free early education. This represents a 1.4% increase on the 2013 figure (16,630). As a percentage of the 3 and 4 year old population, approximately 99.7% of 3 and 4 year olds in Derbyshire were in receipt of some free early provision.

Performance information and analysis on Derbyshire's children involved with safeguarding agencies

Changes are taking place within Derbyshire with firm plans for "Starting Point" to be the service which provides the "front door" to children's services including early help. The involvement of partners in health, the police and others will ensure that any referral is appropriately triaged and forwarded to the most appropriate service. Pilots have taken place throughout the last year with positive evaluations. The benefits of having a whole children's services front door, rather than one just focused on safeguarding, ensures that families who require early help are dealt with in a timely way. Starting Point will be launched officially in September 2015 and early help, advice, support and safeguarding services for Derbyshire children and young people will then be all in one place. Information will be shared with police and health colleagues to deal with enquiries more quickly which will lead to getting the right help to families at the right time.

Early Help:

The focus of Early Help is to address low level needs and emerging needs of children and families where needs are unclear or not being met. These services within Derbyshire County Council are primarily delivered through the children's centre and locality based multi-agency teams (MATs). Close partnership and working arrangements with health colleagues, schools, police and housing are essential to the effectiveness of the services provided. The Early Help Assessment (EHA) was introduced in April 2014 to replace the Common Assessment Framework (CAF).

The EHA reflected the move in Derbyshire towards a more strengths based approach to work with children and families and recent feedback from a survey of staff and families indicate that it is helpful and reflects a better and more engaging approach. Recent feedback from 24 children aged 8 -17 reported that they felt the EHA was helpful with over 95% of the 24 surveyed saying the EHA and action plan "*made a difference*". Service user views and feedback is captured through regular questionnaires completed at the end of an intervention, 458 were completed in the last year with an average of 96.5% of families in 2014 to 2015 reporting that their experience of the MAT intervention was good or excellent.

From 1st April 2014 to 31st March 2015, 6858 early help assessments have been completed.

There is currently considerable pressure on budgets with savings required across agencies. The DSCB has asked for and received assurance that there is a determination within the County Council to safeguard early help services as much as possible. Work is currently ongoing with colleagues in public health to ensure that early years and early help services are integrated as much as possible in order to reduce duplication.

Whilst there is some information about the outcomes achieved for children and families through early help, the management information required to support performance improvement is not yet fully in place and whilst the number of EHA completed by MAT teams is known, it is not clear if other agencies have their own mechanism for reporting on EHA, how many are completed and by whom. This will be examined over the coming year by DSCB to address any reporting shortfall.

Awareness of early help processes across partners has also featured in a serious incident learning review of a young person's death in the last year, with a recommendation that further promotion and audit of the use of early help processes is required. The DSCB through the Serious Case Review Action Plans sub group will be monitoring progress.

However data indicates that cases are being stepped up to/ and stepped down from social care involvement with 1194 (10.8%) of cases referred to Early Help/MAT services 'Stepped Down' from Social Care. The percentage of cases referred to Social Care where MATs were the source of the referral in the last year was 11%.

It should be highlighted that within all performance data there are differences between districts and this is closely monitored through the DSCB's performance framework.

Children in need:

The number of children in need in Derbyshire (those receiving services under Section 17 of the Children Act 1989 and excluding children in care and those subject to a Child Protection plan) has increased by 6.4% when comparing numbers at the end of March 2015 with numbers at the end of 2013/14.

Child protection:

Figures for the 12 months ending March 2015 with 1423 Section 47 enquiries initiated, show a decrease of 28.0% compared with 2013/14.

Numbers of Initial Child Protection Conferences held in Derbyshire saw a decrease between 2011/12 (887) and 2012/13 (851) but increased during 2013/14 (935). The number of Initial Child Protection Conferences held during the 12 months ending March 2015 was 919 which represents a 1.7% decrease when compared with 2013/14.

The proportion of Initial Child Protection Conferences that result in children becoming the subject of a child protection plan has been relatively consistent since 2010/11. The percentage for the 12 months ending March 2015 was 81.5% which represents a decrease of 3.3% when compared with 2013/14. Similarities in percentage outcomes in this area are indicative of a child protection system that is consistently identifying children at risk who need multi-agency child protection plans.

Performance for the 12 months ending March 2015 (93.1%) shows an increase of conferences being held within 15 days of the section 47 enquiry being initiated, when compared with performance outcomes for 2013/14. This is positive as any delays in convening Initial Child Protection Conferences for children subject to child abuse enquiries can clearly affect adequate safeguarding arrangements being made on their behalf which is why the DSCB monitors Derbyshire's performance in this important area of child protection work.

At the end of March 2015 there were 644 children subject to a child protection plan, a 7.2% decrease when compared with the number at 31st March 2014. Emotional abuse and neglect continue to be the primary reasons why children are subject to child protection plans, typically accounting for around 90% of plans.

Emotional abuse has increased from 46.3% at 31st March 2013 to 59.8% of plans at 31st March 2014. At the end of March 2015, 57.8% of children subject to a child protection plan had a plan with a reason of emotional abuse. This figure remains the reason why DSCB places emotional abuse and related concerns at the centre of its priorities for the next year.

At the end of March 2015, 32.3% of children subject to a child protection plan had a plan with a reason of neglect, a small increase compared with 31st March 2014. However this is a decrease from 40.8% of plans as at 31st March 2013.

Attendance at Child Protection Conferences:

Numbers of children and young people attending conferences is still disappointing with just 7.1% (or 65 of 919) attending an initial conference in the last year. Review conference attendance was slightly better with an increase from 7.2% (132/1838) for 2013/14 and 9.0% (181/2010) for the 12 months ending February 2015. Including the voice of the child is vital in all areas of safeguarding but especially when child protection decisions are being made and the Board will ensure in the next year, supported by the use of the new Strengthening Families framework that this participation improves. It is hoped that practitioners will make good use of Stronger Families Safer Children guidance to help them to engage children from the start of the process and therefore encourage better participation thereafter.

Changes in child protection conference methodology include the whole focus being moved from a formal 'Board Room' style into a more participatory and less formal arena. Effort is focused on engaging parents and children who attend, to encourage them to participate and 'own' the issues. The approach is highly interactive and visible with the Chair or Conference Facilitator ensuring that the issues discussed

are addresses using the Safety and Wellbeing Grid, ensuring the child is at the centre and that risks are clear despite focusing on “what’s working well”.

Children in Care

Numbers of children in care have been decreasing and figures at the end of March 2015 (600) were a decrease (4.5%) when compared with the end of 2013/14 (628). The small reduction may be due to effective action earlier in the child’s journey.

It is worth noting that Derbyshire’s rate of children in care per 10k population aged under 18 remains significantly below the statistical neighbour average and England rate. Derbyshire would have approximately 935 children in care if the rate per 10k matched that seen for England in 2013/14 and approximately 875 to match the average for our statistical neighbour group.

Private Fostering:

A private fostering arrangement is essentially one that is made privately (without the involvement of a local authority) for the care of a child under the age of 16 (or under 18, if disabled) by someone other than a parent or close relative with the intention that it should last for 28 days or more. The number of children in Derbyshire who are living under a private fostering arrangement has been consistently low but has increased from 8 at 31st March 2014 to 12 at 31st March 2015. This is encouraging but indicates more promotion is required, including the re- launch of the DSCB private fostering e learning module available on the DSCB website.

Allegations referred to the LADO (Local Authority Designated Professional)

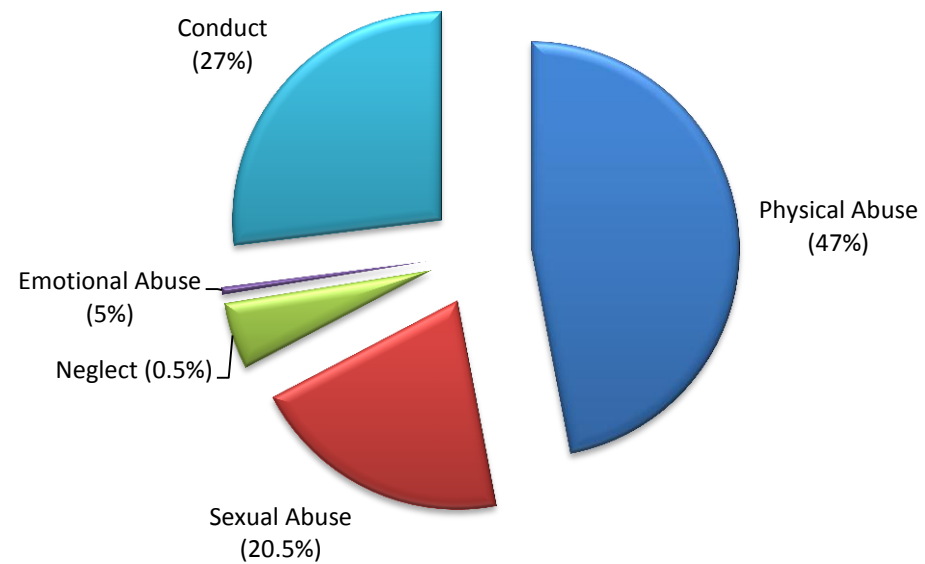
There were 349 referrals of allegations against staff, carers and volunteers submitted to the LADO for consideration between 1st April 2014 and 31st March 2015 compared with 298 for the same period 2013/2014 and 240 for 2011/2012.

The breadth of allegations against professionals breaks down by agency as follows:

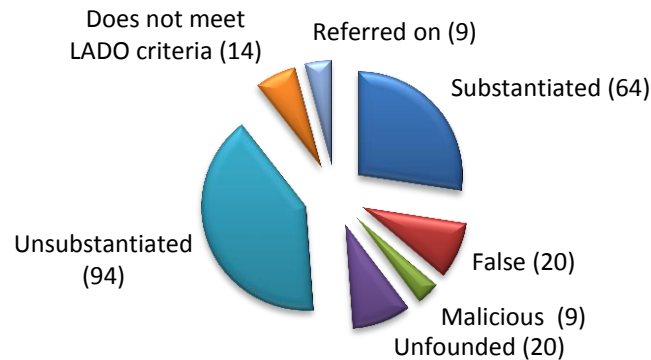
AGENCY	2012/2013	2013/2014	2014/2015
Social Care	8	6	6
Education teaching staff	33	92	97
Education other	47	20	20

Further education	1	2	2
Higher Education	1	1	0
Child Care	26	9	19
Health	10	4	10
Police	2	3	2
Private Residential Unit	23	47	54
DCC Residential Unit	7	12	26
DCC Foster Care	6	18	22
Other LA Foster Care	5	3	0
Private Foster Care	6	13	15
Voluntary Sector	6	18	4
Other (Inc. sports coaches/taxi escorts)	39	50	72
Total	240	298	349

Category of Concerns referred 2014/2015



Completed Allegation Outcomes - 2014/2015



The final completion of the LADO process can vary significantly, with some final outcomes taking up to and over a year on some occasions when outcomes of Police investigations and prosecutions are awaiting completion. A substantial amount of referrals result in internal investigations and internal procedures being followed which can be protracted.

At time of writing 235 referrals had been concluded with 114 outstanding awaiting outcomes of internal procedures, presentation to Foster Panel, Police investigations and other feedback, which the LADO business support actively follow up

The volume of work and process followed within Derbyshire positively demonstrates continued partnership working, with all LADO referrals shared within the Police Central Referral Unit, where the LADO is co-located, discussed with a Detective Sergeant to establish if the threshold is met for a Police investigation, and whether there is any Police information, or intelligence that would contribute to decision making.

Domestic Violence:

The overall number of referrals to Social Care where domestic violence (DV) was noted has been reducing, with a 29.6% decrease between 2012/13 and 2013/14 which has been followed by a further 29.8% decrease for 2014/15.

Referral criteria for Social Care to record as a 'Domestic Violence Referral' is as follows:

- 'Domestic Violence Child' ticked as a 'Presenting Issue' at referral
- 'Domestic Violence Parent' ticked as a 'Presenting Issue' at referral
- 'Domestic Violence for other member of household' ticked as a 'Presenting Issue' at referral
- A 'Domestic Violence' service used group open at the time of the referral
- The source of the referral was the Police Central Referral Unit.

During the 12 months ending 31st March 2015, 30.5% of referrals to social care were DV referrals. This was a reduction from 33.8% during 2013/14 and 50.3% during 2012/13.

The DV notifications through to Call Derbyshire (the current "front door") where there are children in the household related to a DV episode has seen a steady increase. There were 3979 DV notifications from Derbyshire Police to Call Derbyshire from April 2014 to March 2015 compared to 3830 in the preceding year.

Standard level DASH (a risk identification, assessment and management tool used by the police) notifications to Derbyshire schools started from March 2015, with the intention for schools to be informed of all standard, medium and high notifications within the next few months.

Numbers of Domestic Violence Protection Orders (DVPOs) which are orders applied for by the police and made by the Magistrates' Court, where children were involved are not available for 2014/15, but following a request from Derbyshire safeguarding partners, the police have commenced recording this data as of April 2015 and it will therefore be available quarterly going forward. DVPOs are the overall DVPO figures for DVPOs granted in Derbyshire are only available since implementation and these total 57 from June 2014 to March 2015.

Multi Agency Risk Assessment Conferences (MARACs) are now regarded as a key initiative in reducing serious offences arising out of DV situations, including homicide. Each of the five Derbyshire MARACs have an affinity to the district(s) they cover in respect of the referrals they are considering and representation on each MARAC should as far as is possible also have a working familiarity with these areas. There were 714 MARAC cases in the past year.

Derbyshire Constabulary, the National Probation Service and HM Prison Service are together responsible for Multi Agency Public Protection Arrangements (MAPPA) in Derbyshire. The arrangements have been established for the purpose of assessing and managing the risks that may be posed by sexual, violent and other serious offenders, whose direct or indirect victims will sometimes have been children. Additional statutory services are cooperating partners to MAPPA including a number who also work together through the DSCB. The

management of offenders and perpetrators through MAPPA complements and supports the responsibilities of the SCB. At 31 March 2014 there were 1261 MAPPA-eligible offenders living in communities within Derby and Derbyshire, which shows an increase of 121. The figures for end March 2015 will not be agreed for official publication until October 2015.

Child Sexual Exploitation

Information available for the 12 months ending March 2015 shows that CSE was flagged as a potential issue in 2.8% of all referrals to Social Care. This represents a small 0.7% increase when compared with 2.1% for 2013/14.

For referrals to Social Care during the 12 months ending March 2015 where CSE was flagged, the most common outcome was to progress to a Strategy Discussion (44.4%), although the percentage that did so varied between districts from 61.0% to 22.6%. Also to note is the percentage of CSE referrals to Social Care that led to no further action. For Derbyshire overall during the 12 months ending March 2015, 29.1% of referrals to Social Care where CSE was flagged led to no further action. This percentage again varied substantially between districts. District performance breakdown is provided to DSCB in the new performance reporting framework therefore these differences can be scrutinised.

Trafficked Children

There were 9 recorded cases of children being trafficked since September 2014, which is when Derbyshire commenced its participation in a Home Office pilot relating to trafficking (see comments earlier in CSE section).

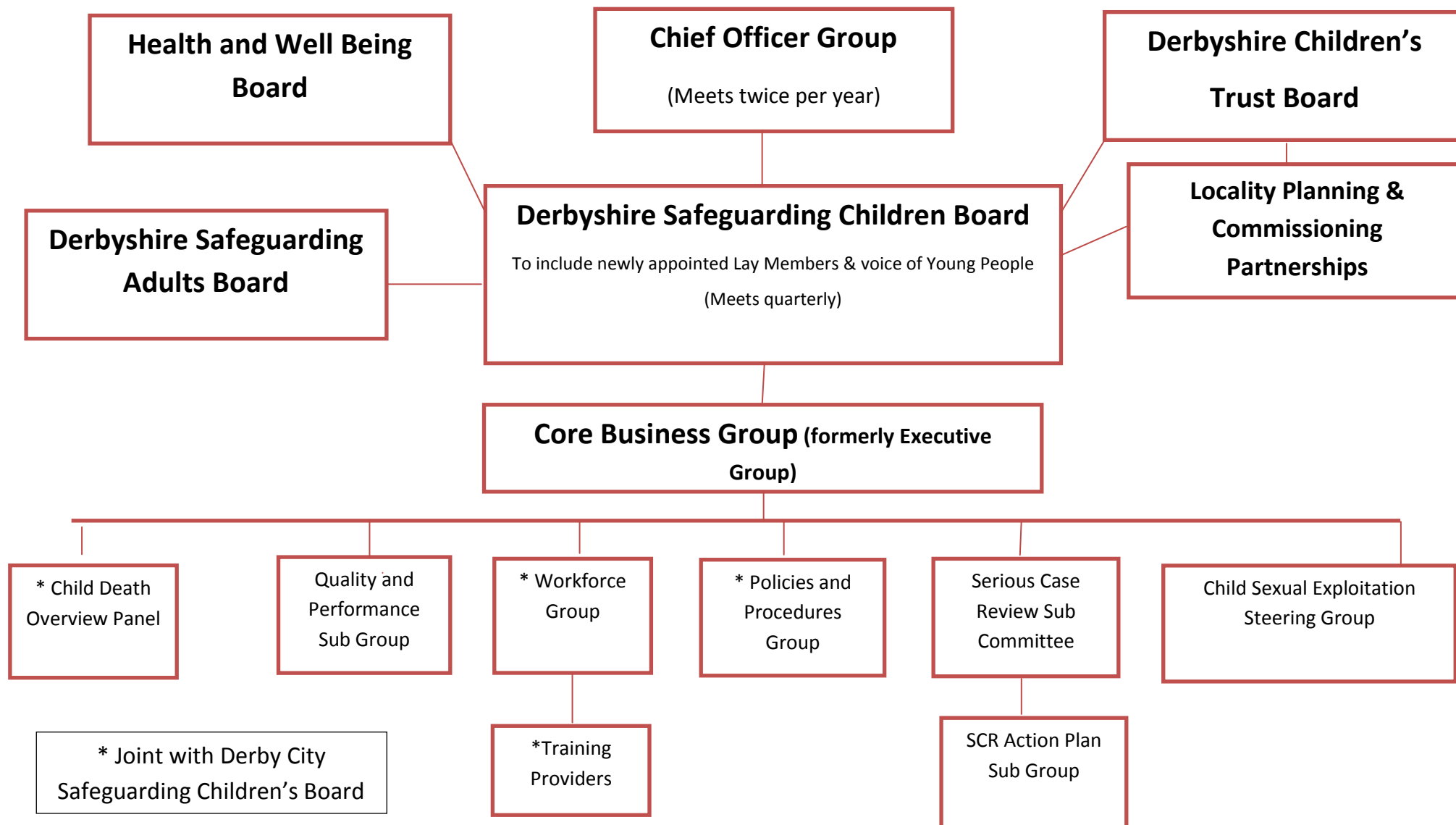
Missing

The overall number of individual children who go missing from home or care in Derbyshire has been reducing, with a 42.7% reduction seen between 2010/11 and 2013/14. Figures for the 12 months ending March 2015 represented a reduction of 7.7% when compared with 2013/14 and were a decrease of 1.8% when compared with the 12 months ending February 2015.

There were 283 children and young people who were missing from home, care or education more than once in the last 12 months (as of 31/03/15). Of those that were repeatedly missing from home or care (269 cases), none of these were recorded as being repeatedly missing from education. The greatest proportion (22.7 %) of children who were repeatedly missing from home or care were 16 years of age (61 cases) as of 31/03/15.

Available information for the 12 months ending March 2015 showed that a linked return interview was received in 84.0% of instances of a child going missing following their return/being found and that 58% of these interviews were held within 72 hours.

Appendix B DSCB Structure Chart 2014



Appendix C DSCB and DSCB Sub Group Attendance: April 2014-March 2015

Meeting Name	Date	Derbyshire Police	DCC Social Care	DCC YOS	Derbyshire Probation	Education	DCHS	Derbyshire CCGs (x4 CCGS)	DHFT	DSCB	DCC Legal	Derbyshire Probation CRC	EMAS	CAFCASS	Derbyshire Fire and Rescue	Housing	DCC Cllr	Voluntary Sector	Chesterfield Royal Hospital	Derby Hospitals	DCC Multi Agency Team	Erewash CCGs	Tameside and Glossop CCGs	Lay Member
DSCB Full Board	20/06/14											n/a												n/a
	19/09/14											n/a												n/a
	19/12/14																							n/a
	20/03/15																							
DSCB Core Business Group	24/04/14			n/a	n/a	n/a	n/a		n/a		n/a	n/a	n/a	n/a	n/a	n/a	n/a	n/a	n/a	n/a	n/a	n/a	n/a	n/a
	24/07/14			n/a	n/a	n/a	n/a		n/a		n/a	n/a	n/a	n/a	n/a	n/a	n/a	n/a	n/a	n/a	n/a	n/a	n/a	n/a
	28/08/14			n/a	n/a	n/a	n/a		n/a		n/a	n/a	n/a	n/a	n/a	n/a	n/a	n/a	n/a	n/a	n/a	n/a	n/a	n/a
	23/10/14			n/a	n/a	n/a	n/a		n/a		n/a	n/a	n/a	n/a	n/a	n/a	n/a	n/a	n/a	n/a	n/a	n/a	n/a	n/a
	27/11/14			n/a	n/a	n/a	n/a		n/a		n/a	n/a	n/a	n/a	n/a	n/a	n/a	n/a	n/a	n/a	n/a	n/a	n/a	n/a
	05/02/15			n/a	n/a	n/a	n/a		n/a		n/a	n/a	n/a	n/a	n/a	n/a	n/a	n/a	n/a	n/a	n/a	n/a	n/a	n/a
DSCB SCR Sub Committee	16/05/14					n/a						n/a			n/a	n/a	n/a	n/a	n/a	n/a	n/a	n/a	n/a	n/a
	18/07/14					n/a						n/a			n/a	n/a	n/a	n/a	n/a	n/a	n/a	n/a	n/a	n/a
	03/10/14					n/a									n/a	n/a	n/a	n/a	n/a	n/a	n/a	n/a	n/a	n/a
	26/11/14					n/a									n/a	n/a	n/a	n/a	n/a	n/a	n/a	n/a	n/a	n/a
	29/01/15					n/a									n/a	n/a	n/a	n/a	n/a	n/a	n/a	n/a	n/a	n/a
	10/03/15					n/a									n/a	n/a	n/a	n/a	n/a	n/a	n/a	n/a	n/a	n/a
DSCB SCR Action Plans Group	01/05/14		n/a			n/a	n/a				n/a	n/a	n/a	n/a	n/a	n/a	n/a	n/a	n/a	n/a	n/a	n/a	n/a	n/a
	23/07/14		n/a			n/a	n/a				n/a	n/a	n/a	n/a	n/a	n/a	n/a	n/a	n/a	n/a	n/a	n/a	n/a	n/a
	24/09/14		n/a			n/a	n/a				n/a	n/a	n/a	n/a	n/a	n/a	n/a	n/a	n/a	n/a	n/a	n/a	n/a	n/a
	26/11/14		n/a			n/a	n/a				n/a	n/a	n/a	n/a	n/a	n/a	n/a	n/a	n/a	n/a	n/a	n/a	n/a	n/a
	14/01/15		n/a			n/a	n/a				n/a	n/a	n/a	n/a	n/a	n/a	n/a	n/a	n/a	n/a	n/a	n/a	n/a	n/a

Meeting Name	Date	Derbyshire Police	DCC Social Care	DCC YOS	Derbyshire Probation	Education	DCHS	Derbyshire CCGs (rep x4 CCGS)	DHFT	DSCB	DCC Legal	Derbyshire Probation CRC	Voluntary Sector?	Chesterfield Royal Hospital	Derby Hospitals	DCC Multi Agency Team	T3	DSCB Training	Community Safety
Quality and Performance	06/05/14			n/a		n/a							n/a	n/a	n/a	n/a	n/a	n/a	n/a
	08/07/14			n/a		n/a							n/a	n/a	n/a	n/a	n/a	n/a	n/a
	09/09/14			n/a		n/a							n/a	n/a	n/a	n/a	n/a	n/a	n/a
	18/11/14			n/a		n/a							n/a	n/a	n/a	n/a	n/a	n/a	n/a
	26/03/15			n/a		n/a							n/a	n/a	n/a	n/a	n/a	n/a	n/a
Workforce Development	10/06/14			n/a		n/a				n/a	n/a		n/a	n/a		n/a	n/a	n/a	n/a
	09/09/14					n/a	n/a			n/a	n/a		n/a	n/a		n/a	n/a	n/a	n/a
	16/12/14			n/a		n/a	n/a			n/a	n/a		n/a	n/a		n/a	n/a	n/a	n/a
	27/01/15					n/a	n/a			n/a	n/a		n/a	n/a		n/a	n/a	n/a	n/a
Training Providers	20/05/14	n/a		n/a		n/a				n/a	n/a		n/a	n/a		n/a	n/a	n/a	n/a
	02/09/14	n/a		n/a		n/a				n/a	n/a		n/a	n/a		n/a	n/a	n/a	n/a
	02/12/14	n/a		n/a		n/a				n/a	n/a		n/a	n/a		n/a	n/a	n/a	n/a
	24/02/15	n/a		n/a		n/a				n/a	n/a		n/a	n/a		n/a	n/a	n/a	n/a
Policies and Procedures	09/04/14				n/a	n/a					n/a		n/a			n/a	n/a	n/a	n/a
	18/06/14				n/a	n/a					n/a		n/a			n/a	n/a	n/a	n/a
	14/01/15				n/a	n/a					n/a		n/a			n/a	n/a	n/a	n/a
CSE Steering Group	01/10/14			n/a	n/a						n/a	n/a		n/a	n/a				
	10/11/14			n/a	n/a						n/a	n/a		n/a	n/a				
	05/03/15			n/a	n/a						n/a	n/a		n/a	n/a				

Appendix D DSCB Budget summary

14 – 15 Contributions

	% Split	14-15 SCB Contribution £	14 – 15 Project Contribution £	14 – 15 Total £
DCC	46.34%	-140,516	-9,574	-150,090
Police	6.60%	-20,017	-1,364	-21,381
Probation	0.85%	-2,578	-176	-2,754
CAFCASS	0.15%	-550	-31	-581
North Derbys CCG	43.69%	-132,509	-9,026	-141,536
T&G CCG	2.37%	-7,188	-490	-7,678
Police & Crime Commissioner	N/A	N/A	-9,980	-9,980
Community Safety	N/A	N/A	-9,980	-9,980
Total	100.00%	-303,359	-40,620	-343,979

14 – 15 Spend

	£	£	£
Staffing	206,568		206,568
Training, hire of rooms, catering	15,814		15,814
Travel Costs	3,972		3,972
Professional fees, inc Ind. Chair & SCRs	55,770	29,940	85,710

Supplies & Services	8,225		8,225
Income	-3,623		-3,623
Total Spend	286,726	29,940	316,666

2014 – 15 Underspend	-16,633	-10,680	-27,313
LA Underspend	-7,708	-4,949	-12,657
Other Agencies Underspend	-8,925	-5,731	-14,656

Date of Report Publication: 23/10/15

Approval process: The report was approved by DSCB members on 19/10/15

Author: Amanda Clarke, Board Manager, Derbyshire Safeguarding Children Board

Contact details: 01629 532181 or email: amanda.clarke@derbyshire.gov.uk