

**Derbyshire County Council  
Children & Younger Adults**

**Performance Improvement Board  
(Safeguarding)**

**October 2014**

This report provides the board with an update on the performance of safeguarding services within the Children & Younger Adults department.



## **Contents**

|  |           |
|--|-----------|
| <b>Purpose of the Report</b>                                 | <b>4</b>  |
| <b>Information &amp; Analysis – Service Priorities</b>       | <b>4</b>  |
| Referral Decisions   | 4         |
| Case Allocations   | 4         |
| Unallocated cases – Snapshot figures                         | 4         |
| Average caseloads  | 5         |
| Checks & Audits on Frameworki Records                        | 6         |
| Audits of Social Care Records                                | 6         |
| Audits of MAT Records  | 6         |
| Frameworki in Schools  | 7         |
| Social Work Assessments                                      | 8         |
| Step-Up/Step-Down Arrangements                               | 8         |
| Quality Assurance & the Voice of the Child                   | 10        |
| Chronologies   | 10        |
| Participation of Children & Young People in Their Reviews    | 11        |
| Escalations  | 12        |
| Management Decision Making                                   | 13        |
| Children in Need – Plans and Plan Reviews                    | 13        |
| Priority Groups  | 14        |
| Child Protection   | 14        |
| Section 47 Enquiries   | 14        |
| Initial Child Protection Conferences                         | 14        |
| Number Subject to a Child Protection Plan                    | 16        |
| Child Protection Plan Reasons                                | 17        |
| Duration of Child Protection Plans                           | 18        |
| 2 <sup>nd</sup> or Subsequent Child Protection Plans         | 19        |
| Child Protection Visits                                      | 21        |
| Child Protection Reviews                                     | 22        |
| Child Sexual Exploitation                                    | 22        |
| Children Who Go Missing From Home or Care                    | 24        |
| Children Missing From Education                              | 26        |
| Children in Care Placed More Than 20 Miles from Home         | 27        |
| Disabled Children  | 28        |
| SEN Children in Residential Schools                          | 30        |
| <b>Information &amp; Analysis – Call Derbyshire</b>          | <b>30</b> |
| Call Volumes   | 30        |
| Call Answer Times  | 31        |
| Abandoned Calls  | 32        |
| <b>Information &amp; Analysis – Contacts &amp; Referrals</b> | <b>33</b> |
| Initial Contacts   | 33        |
| Referrals  | 33        |
| Re-Referrals   | 34        |
| <b>Information &amp; Analysis – Children in Need</b>         | <b>35</b> |
| Numbers of Children in Need                                  | 35        |

|   |           |
|---|-----------|
| <b>Information &amp; Analysis – Children in Care</b>  | <b>35</b> |
| Numbers of Children in Care                           | 35        |
| Placement Types                                       | 36        |
| Admissions & Discharges                               | 37        |
| Visits to Children in Care                            | 38        |
| Reviews of Children in Care                           | 39        |
| Health Outcomes for Children in Care                  | 40        |
| <b>Information &amp; Analysis – Adoptions</b>         | <b>42</b> |
| Numbers of Adoptions                                  | 42        |
| Recruitment & Matching                                | 42        |
| Scorecard Indicators A1 & A2                          | 42        |
| <b>Information &amp; Analysis – Care Leavers</b>      | <b>43</b> |
| <b>Information &amp; Analysis – Private Fostering</b> | <b>44</b> |
| <b>Information &amp; Analysis – Youth Offending</b>   | <b>45</b> |
| Re-Offending Rates                                    | 45        |
| Children in Care Offending                            | 45        |

## **Purpose of the Report**

This report provides the board with an update on the performance of safeguarding services within the Children & Younger Adults department.

## **Information & Analysis – Service Priorities**

### **Referral Decisions**

Working Together 2013 reaffirmed the requirement that “*Within **one working day** of a referral being received, a local authority social worker should make a decision about the type of response that is required and acknowledge receipt to the referrer*”.

The figures below measure the timescale between a referral being received (i.e. the start date of the referral episode on Frameworki), and the point at which the final outcome of the referral is recorded on Frameworki.

The percentage of referral decisions made within 1 working day show year on year improvement from 2010/11 to 2012/13. However, a small 0.6 percentage point decrease has been seen for 2013/14 when compared with 2012/13, and a further 0.1 percentage point decrease has been seen when comparing outcomes for the 12 months ending September 2014 with those for 2013/14.

### **Percentage of referral decisions made within 1 working day**

| District                 | 2011/12 Outcome | 2012/13 Outcome | 2013/14 Outcome | Aug 2014 Outcome | Sep 2014 Outcome | Trend 2013/14 to Sep 2014 | Trend Aug 2014 to Sep 2014 |
|--------------------------|-----------------|-----------------|-----------------|------------------|------------------|---------------------------|----------------------------|
| Disabled Children        | 92.4%           | 89.4%           | 97.7%           | 95.3%            | 95.4%            | ↓                         | ↑                          |
| High Peak & N Dales      | 67.2%           | 87.8%           | 81.5%           | 89.7%            | 92.0%            | ↑                         | ↑                          |
| Chesterfield             | 92.8%           | 94.9%           | 94.1%           | 90.1%            | 89.3%            | ↓                         | ↓                          |
| NE Derbyshire & Bolsover | 89.8%           | 89.1%           | 94.0%           | 93.2%            | 93.2%            | ↓                         | ↔                          |
| Amber Valley             | 88.0%           | 94.9%           | 88.6%           | 88.7%            | 87.9%            | ↓                         | ↓                          |
| Erewash                  | 94.7%           | 94.2%           | 96.1%           | 93.9%            | 93.1%            | ↓                         | ↓                          |
| S Derbyshire & S Dales   | 69.3%           | 93.0%           | 94.5%           | 91.7%            | 92.0%            | ↓                         | ↑                          |
| <b>Derbyshire</b>        | <b>84.2%</b>    | <b>92.2%</b>    | <b>91.6%</b>    | <b>91.5%</b>     | <b>91.5%</b>     | ↓                         | ↔                          |

High Peak & North Dales was the only districts to see an improvement in performance when comparing outcomes for the 12 months ending September 2014 with those from 2013/14.

It should be noted that performance has improved for Disabled Children, High Peak & North Dales, and South Derbyshire & South Dales when comparing outcomes for the 12 months ending September 2014 with those reported for the 12 months ending August 2014.

### **Case Allocations**

#### **Unallocated cases – Snapshot figures:**

District managers are expected to provide the Deputy Assistant Director with details of unallocated cases on a weekly basis. This information is used to ensure that no child protection cases or children in care are left unallocated. Note is also taken if there appears to be a larger than usual number of unallocated cases and district managers are contacted directly in order to understand reasons why this is the case. If necessary the Deputy Assistant Director may approve short-term agency staff where the numbers of unallocated cases have increased considerably and in-house remedial action has not been able to reduce the figure sufficiently.

The latest snapshot data (from around the end of September 2014) shows “on the day” figures reported by each District.

Numbers of unallocated cases are generally very low (or zero). However, this snapshot information indicates some short-term issues:

- 2 unallocated cases at Single Assessment in High Peak & North Dales. These cases were pending allocation with the duty team and are under review of the duty manager
- 8 unallocated children in need cases in Amber Valley. These cases have all been risk assessed and the North Team Duty are supporting case activity
- 14 children in need cases at Single Assessment in Erewash. All 14 cases were due to be allocated by the Monday following the snapshot date

#### Numbers of unallocated cases at latest snapshot date

| District                         | Number of Unallocated Cases |     |     |    |     | Date of latest snapshot |
|----------------------------------|-----------------------------|-----|-----|----|-----|-------------------------|
|                                  | Single Assessment           | S47 | CIN | CP | CIC |                         |
| Disabled Children                | 0                           | 0   | 0   | 0  | 0   | 11/09/14                |
| High Peak & North Dales          | 2                           | 0   | 0   | 0  | 0   | 03/10/14                |
| Chesterfield                     | 0                           | 0   | 0   | 0  | 0   | 06/10/14                |
| North East Derbyshire & Bolsover | 0                           | 0   | 0   | 0  | 0   | 06/10/14                |
| Amber Valley                     | 0                           | 0   | 8   | 0  | 0   | 29/09/14                |
| Erewash                          | 14                          | 0   | 0   | 0  | 0   | 03/10/14                |
| South Derbyshire & South Dales   | 0                           | 0   | 0   | 0  | 0   | 29/09/14                |

In addition to the above, the district managers for Disabled Children have reported that there are 54 cases awaiting allocation to a Paediatric Occupational Therapist. In light of the ‘Better Care Fund’ that is to be introduced, how Occupational Therapy is delivered is currently being reviewed working with Adult Care and the borough/district councils.

#### Average caseloads:

The average number of cases allocated to social workers has increased from 16 cases per worker at 31<sup>st</sup> March 2013 to 19 cases per worker at 31<sup>st</sup> March 2014. However, this average had decreased to 18 at 31<sup>st</sup> September 2014.

#### Average social worker\* caseloads

| District                 | 2011/12 Outcome | 2012/13 Outcome | 2013/14 Outcome | Aug 2014 Outcome | Sep 2014 Outcome | Trend 2013/14 to Sep 2014 | Trend Aug 2014 to Sep 2014 |
|--------------------------|-----------------|-----------------|-----------------|------------------|------------------|---------------------------|----------------------------|
| Disabled Children        | 16              | 13              | 17              | 18               | 18               | ↑                         | ↔                          |
| High Peak & N Dales      | 16              | 18              | 19              | 16               | 17               | ↓                         | ↑                          |
| Chesterfield             | 17              | 16              | 14              | 16               | 14               | ↔                         | ↓                          |
| NE Derbyshire & Bolsover | 14              | 15              | 21              | 21               | 21               | ↔                         | ↔                          |
| Amber Valley             | 20              | 12              | 18              | 17               | 17               | ↓                         | ↔                          |
| Erewash                  | 16              | 17              | 20              | 20               | 20               | ↔                         | ↔                          |
| S Derbyshire & S Dales   | 21              | 25              | 22              | 17               | 17               | ↓                         | ↔                          |
| <b>Derbyshire</b>        | <b>17</b>       | <b>16</b>       | <b>19</b>       | <b>18</b>        | <b>18</b>        | <b>↓</b>                  | <b>↔</b>                   |

(\*Includes workers with a Framework role of ‘Senior Practitioner Children’s Services’, ‘Social Worker Children’s Services’ or ‘Student Social Worker Children’s Services’)

The average number of allocated cases per social worker varies across the districts with North East Derbyshire & Bolsover (21) and Erewash (20) having a higher average number of allocated cases per social worker at the end of September 2014 than seen for Derbyshire overall. Chesterfield had the lowest average number of allocated cases per social worker (14). South Derbyshire & South Dales

have seen the largest decrease in the average number of allocated cases per worker at the end of September 2014 when compared with averages at the end of 2013/14.

It should be noted that the figures above only represent cases where the worker is showing as the allocated worker for a child on the front screen of their Frameworki record. Also, these figures do not account for some workers being part-time.

### **Checks & Audits on Frameworki Records**

#### **Audits of Social Care Records:**

Results from Social Care case files audited during July and August 2014 show that of the 103 cases audited, 72% were judged to be good or better.

#### **Percentage of Social Care case files audited that were judged to be good or better**

| District                         | Jul 2014   | Aug 2014   | Overall    |
|----------------------------------|------------|------------|------------|
| Disabled Children                | 88%        | 100%       | 94%        |
| High Peak & North Dales          | -          | 88%        | 88%        |
| Chesterfield                     | 71%        | 33%        | 54%        |
| North East Derbyshire & Bolsover | 100%       | 63%        | 83%        |
| Amber Valley                     | 44%        | 67%        | 54%        |
| Erewash                          | 57%        | 71%        | 62%        |
| South Derbyshire & South Dales   | 83%        | 67%        | 75%        |
| <b>Derbyshire</b>                | <b>72%</b> | <b>71%</b> | <b>72%</b> |

*(Percentages are rounded to the nearest whole)*

Variations at district level have been seen, with Chesterfield and Amber Valley having the lowest percentage of audited cases judged to be good or better (54%) and Disabled Children (94%) the highest. It should also be noted that no cases were audited for High Peak & North Dales in July 2014.

Strengths identified by audits completed on Social Care records include:

- 89.8% of Social Care cases examined had up-to-date case files
- 89.6% Social Care cases showed appropriate visiting in terms of the needs of the case
- 93.2% of Social Care cases showed evidence of children's wishes being taken into account
- 77.8% of Social Care cases showed the child had been seen alone
- 93.9% of Social Care teams' cases showed evidence of parent/carer's views
- All Social Care audits showed evidence that views of relevant others such as other professionals have been sought
- 89.4% Social Care cases had an appropriate assessment completed
- 74.4% of Social Care cases had appropriate Care Plans
- 89.4% of Social Care cases showed appropriate supervision
- 84.8% of Social Care cases, showed improvements in outcomes for children

However, a significant area for improvement was that only 50% of the Social Care cases examined had a complete Chronology.

#### **Audits of MAT Records:**

Results from MAT case files audited during July and August 2014 show that of the 127 cases audited, 66% were judged to be good or better.

### Percentage of MAT case files audited that were judged to be good or better

| Locality                         | Jul 2014 | Aug 2014 | Overall |
|----------------------------------|----------|----------|---------|
| High Peak & North Dales          | 50%      | 70%      | 60%     |
| Chesterfield                     | 60%      | 40%      | 50%     |
| North East Derbyshire & Bolsover | 50%      | 69%      | 59%     |
| Amber Valley                     | 89%      | 80%      | 84%     |
| Erewash                          | 50%      | 70%      | 60%     |
| South Derbyshire & South Dales   | 88%      | 88%      | 88%     |
| Derbyshire                       | 62%      | 69%      | 66%     |

*(Percentages are rounded to the nearest whole)*

Variations at locality level have been seen, with Chesterfield having the lowest percentage of audited cases judged to be good or better (50%) and South Derbyshire & South Dales the highest (88%).

Strengths identified by audits completed on MAT case records include:

- 79.7% of MAT referrals in August had an appropriate response in terms of actions and timeliness
- 76.3% of MAT cases had appropriate agency checks post referral
- 84.4% of MAT cases examined had up-to-date case files
- 74.6% of MAT cases, cases showed appropriate supervision
- 78.1% of MAT cases showed evidence of children's wishes being taken into account
- 88.9% of MAT cases showed evidence of parent/carer's views

Areas for improvement identified by audits completed on MAT case records include:

- Where further intervention was needed, cases for MATs showed only 64.3% of files had a Child in Need/Action Plan
- Only 55.3% of MAT cases had Child in Need/Action Plans reviewed within agency timescales
- Only 52.4% of MAT cases had chronologies
- Only 62.9% of MAT cases were assessed within agency timescales
- Only 63.8% of MAT cases Care cases, showed improvements in outcomes for children

### Frameworki in Schools:

Authorised professionals in 12 schools have been given access to Frameworki. The aim is to improve the effectiveness of safeguarding practices across Derbyshire by allowing timely access to relevant information held by the council about children for whom there are concerns that they are at significant risk of harm.

In phase one of this project (February 2014), access was given to 12 schools, and user access is to be audited every month. The purpose of these audits is to ensure:

- Authorised professionals in schools are using the system appropriately. I.e. to obtain information to support decision making in relation to a child for whom they have concerns that they are at significant risk of harm
- The reasons why records are accessed has been recorded appropriately and complies with the relevant data protection legislation
- That schools use the system effectively to reduce the risk of children suffering significant harm



Phase two of this project is due to be completed in November 2014, following a review of lessons learnt during the first phase. Phase two will involve rolling out Frameworki access to all Derbyshire schools, including academies and independent establishments.

Audit results for September 2014 show that:

- 4 schools accessed Frameworki records during September 2014
- 17 individual child records were accessed
- 1 record was accessed for a child not at the same school as the system user (the child was a half-sibling of other children whose records were accessed who were at the same school as the system user)
- 2 records accessed without an appropriate case note type recorded (1 where the child was a half-sibling of other children whose records were accessed and 1 where the school had previously made a referral for the child)
- 2 records accessed without an appropriate case note reason recorded (1 where the child was a half-sibling of other children whose records were accessed and 1 where the school had previously made a referral for the child)

Where records have been accessed without using the appropriate case note type or reason, this will be followed up with the relevant schools.

### **Social Work Assessments**

Working Together 2013 includes a decommissioning of Initial and Core Assessment timescales and introduces a single assessment requirement to be completed within 45 working days of referral. Systems in Derbyshire have now been implemented, going 'live' on 30<sup>th</sup> March 2014, to enable recording of single assessments. However, it will be several months before reporting on these new processes has been fully developed and embedded.

Initial findings based on development work carried out so far show that, up to the end of September 2014, 2460 single assessments had been completed and 2077 of these had been completed within 45 working days of referral (84.4%).

#### **Single assessment completed within 45 working days 2014/14 to 30<sup>th</sup> September**

| District                 | Apr 2014     | May 2014     | Jun 2014     | Jul 2014     | Aug 2014     | Sep 2014     | Year to Date |
|--------------------------|--------------|--------------|--------------|--------------|--------------|--------------|--------------|
| Disabled Children        | 100.0%       | 100.0%       | 90.9%        | 73.9%        | 86.7%        | 100.0%       | 87.1%        |
| High Peak & N Dales      | 100.0%       | 100.0%       | 94.5%        | 85.4%        | 75.0%        | 64.4%        | 87.5%        |
| Chesterfield             | 100.0%       | 100.0%       | 85.7%        | 84.8%        | 91.7%        | 93.8%        | 90.8%        |
| NE Derbyshire & Bolsover | 98.1%        | 97.2%        | 90.7%        | 82.9%        | 65.9%        | 66.3%        | 81.2%        |
| Amber Valley             | 100.0%       | 100.0%       | 94.3%        | 83.1%        | 77.2%        | 88.2%        | 87.9%        |
| Erewash                  | 100.0%       | 100.0%       | 82.1%        | 70.6%        | 79.5%        | 48.8%        | 78.8%        |
| S Derbyshire & S Dales   | -            | 100.0%       | 92.1%        | 70.4%        | 83.3%        | 45.6%        | 75.7%        |
| <b>Derbyshire</b>        | <b>99.5%</b> | <b>99.4%</b> | <b>89.8%</b> | <b>80.0%</b> | <b>78.0%</b> | <b>70.9%</b> | <b>84.4%</b> |

### **Step-Up/Step-Down Arrangements**

Findings show that 30.8% of cases referred to Social Care during the 12 months ending September 2014 had previous involvement from MATs, an increase when compared with 2013/14 figures (27.8%).

At district level, South Derbyshire & South Dales is the only district not to see an increase in the percentage of cases referred to Social Care that had prior MAT involvement when comparing the 12 months ending September 2014 with 2013/14 figures.

### Percentage of cases referred to Social Care that had prior MAT involvement

| District                 | 2013/14 Outcome | Aug 2014 Outcome | Sep 2014 Outcome | Trend 2013/14 to Sep 2014 | Trend Aug 2014 to Sep 2014 |
|--------------------------|-----------------|------------------|------------------|---------------------------|----------------------------|
| Disabled Children        | 29.8%           | 39.5%            | 38.7%            | ↑                         | ↓                          |
| High Peak & N Dales      | 31.4%           | 31.6%            | 32.9%            | ↑                         | ↑                          |
| Chesterfield             | 37.4%           | 37.6%            | 37.7%            | ↑                         | ↑                          |
| NE Derbyshire & Bolsover | 32.2%           | 32.9%            | 35.2%            | ↑                         | ↑                          |
| Amber Valley             | 20.2%           | 24.7%            | 26.3%            | ↑                         | ↑                          |
| Erewash                  | 18.5%           | 21.7%            | 23.2%            | ↑                         | ↑                          |
| S Derbyshire & S Dales   | 25.6%           | 24.2%            | 24.7%            | ↓                         | ↑                          |
| <b>Derbyshire</b>        | <b>27.8%</b>    | <b>29.5%</b>     | <b>30.8%</b>     | <b>↑</b>                  | <b>↑</b>                   |

Available information for 12 months ending September 2014 shows that the percentage of referrals to Social Care that had MATs recorded as their source has increased when compared with 2013/14, and that increases have been seen for all districts.

### Percentage of cases referred to Social Care where MATs were the source of the referral

| District                 | 2013/14 Outcome | Aug 2014 Outcome | Sep 2014 Outcome | Trend 2013/14 to Sep 2014 | Trend Aug 2014 to Sep 2014 |
|--------------------------|-----------------|------------------|------------------|---------------------------|----------------------------|
| Disabled Children        | 3.8%            | 6.0%             | 6.6%             | ↑                         | ↑                          |
| High Peak & N Dales      | 5.1%            | 6.9%             | 7.6%             | ↑                         | ↑                          |
| Chesterfield             | 5.4%            | 7.9%             | 8.2%             | ↑                         | ↑                          |
| NE Derbyshire & Bolsover | 6.6%            | 10.3%            | 11.8%            | ↑                         | ↑                          |
| Amber Valley             | 5.4%            | 5.5%             | 6.0%             | ↑                         | ↑                          |
| Erewash                  | 4.0%            | 8.1%             | 8.6%             | ↑                         | ↑                          |
| S Derbyshire & S Dales   | 5.8%            | 8.5%             | 9.2%             | ↑                         | ↑                          |
| <b>Derbyshire</b>        | <b>5.4%</b>     | <b>8.0%</b>      | <b>8.7%</b>      | <b>↑</b>                  | <b>↑</b>                   |

The percentage of children in need at the end of September 2014 who were receiving support from a MAT (13.8%) was a decrease when compared with the percentage at the end of 2013/14 (21.2%). Disabled Children was the only district to see an increase in this percentage.

### Percentage of CIN (including CP & CIC) receiving support from a MAT

| District                 | 2013/14 Outcome | Aug 2014 Outcome | Sep 2014 Outcome | Trend 2013/14 to Sep 2014 | Trend Aug 2014 to Sep 2014 |
|--------------------------|-----------------|------------------|------------------|---------------------------|----------------------------|
| Disabled Children        | 5.0%            | 6.1%             | 5.8%             | ↑                         | ↓                          |
| High Peak & N Dales      | 22.1%           | 7.2%             | 6.4%             | ↓                         | ↓                          |
| Chesterfield             | 24.1%           | 15.0%            | 14.1%            | ↓                         | ↓                          |
| NE Derbyshire & Bolsover | 26.7%           | 19.3%            | 18.9%            | ↓                         | ↓                          |
| Amber Valley             | 23.0%           | 17.2%            | 17.5%            | ↓                         | ↑                          |
| Erewash                  | 25.4%           | 18.5%            | 16.9%            | ↓                         | ↓                          |
| S Derbyshire & S Dales   | 18.2%           | 13.9%            | 14.2%            | ↓                         | ↑                          |
| <b>Derbyshire</b>        | <b>21.2%</b>    | <b>14.4%</b>     | <b>13.8%</b>     | <b>↓</b>                  | <b>↓</b>                   |

The percentage of cases referred to Early Help/MAT services during the 12 months ending September 2014 that had involvement from Social Care at any time prior to the referral (50.7%) was a small decrease when compared with the percentage for referrals to Early Help/MAT services during 2013/14.

### Percentage of case referred to Early Help/MAT services that had prior Social Care involvement

| District                 | 2013/14 Outcome | Aug 2014 Outcome | Sep 2014 Outcome | Trend 2013/14 to Sep 2014 | Trend Aug 2014 to Sep 2014 |
|--------------------------|-----------------|------------------|------------------|---------------------------|----------------------------|
| Disabled Children        | 65.9%           | 73.1%            | 73.6%            | ↑                         | ↑                          |
| High Peak & N Dales      | 50.0%           | 49.5%            | 49.2%            | ↓                         | ↓                          |
| Chesterfield             | 54.9%           | 55.7%            | 55.6%            | ↑                         | ↓                          |
| NE Derbyshire & Bolsover | 49.7%           | 49.6%            | 49.8%            | ↑                         | ↑                          |
| Amber Valley             | 58.8%           | 55.9%            | 57.1%            | ↓                         | ↑                          |
| Erewash                  | 51.2%           | 49.0%            | 47.8%            | ↓                         | ↓                          |
| S Derbyshire & S Dales   | 44.6%           | 43.8%            | 44.3%            | ↓                         | ↑                          |
| <b>Derbyshire</b>        | <b>51.3%</b>    | <b>50.7%</b>     | <b>50.7%</b>     | <b>↓</b>                  | <b>↔</b>                   |

Information available for the 2014/15 reporting year to date shows that 11.0% of cases referred to Early Help/MAT services were 'Stepped Down' from Social Care.

### Percentage of cases referred to Early Help/MAT service that were 'Stepped Down' from Social Care

| District                 | Apr 2014     | May 2014    | Jun 2014     | Jul 2014    | Aug 2014     | Sep 2014     | 2014/15 Year-To-Date |
|--------------------------|--------------|-------------|--------------|-------------|--------------|--------------|----------------------|
| Disabled Children        | 31.3%        | 0.0%        | 0.0%         | 24.0%       | 0.0%         | 9.1%         | 12.8%                |
| High Peak & N Dales      | 8.2%         | 20.0%       | 12.5%        | 12.5%       | 20.8%        | 9.0%         | 13.9%                |
| Chesterfield             | 14.3%        | 15.3%       | 13.3%        | 13.6%       | 13.8%        | 17.8%        | 14.4%                |
| NE Derbyshire & Bolsover | 13.9%        | 9.2%        | 9.4%         | 8.5%        | 20.1%        | 7.4%         | 11.1%                |
| Amber Valley             | 7.2%         | 7.1%        | 10.3%        | 5.1%        | 13.9%        | 15.1%        | 9.3%                 |
| Erewash                  | 8.4%         | 2.5%        | 10.9%        | 6.5%        | 3.8%         | 11.1%        | 7.2%                 |
| S Derbyshire & S Dales   | 9.9%         | 5.1%        | 9.6%         | 13.3%       | 12.4%        | 8.6%         | 9.7%                 |
| <b>Derbyshire</b>        | <b>11.3%</b> | <b>9.8%</b> | <b>10.6%</b> | <b>9.9%</b> | <b>14.3%</b> | <b>10.6%</b> | <b>11.0%</b>         |

### Quality Assurance & the Voice of the Child

#### Chronologies:

At the end of 2013/14, 66.9% of cases open to children's social care had a chronology recorded on their record. This represented an improvement in performance when compared with the percentage at the end of June 2013 (the earliest date at which reliable information is available). Particular improvements in performance were seen for Erewash (40.2 percentage point increase) and for Disabled Children (30.8 percentage point increase). Chesterfield, however, was the only district to see a decrease in performance (1.1 percentage point decrease).

Performance at the end of September 2014 (69.2%) represented a 1.2 percentage point increase when compared with the 2013/14 outcome. Disabled Children continue to be the best performing district against this indicator. At the end of September 2014 Amber Valley (52.6%) was the only district to have less than 60% of open cases with a chronology recorded on their record.

### Percentage of open cases with a chronology recorded

| District                 | Jun 2013 Outcome* | 2013/14 Outcome | Aug 2014 Outcome | Sep 2014 Outcome | Trend 2013/14 to Sep 2014 | Trend Aug 2014 to Sep 2014 |
|--------------------------|-------------------|-----------------|------------------|------------------|---------------------------|----------------------------|
| Disabled Children        | 56.2%             | 87.0%           | 93.9%            | 90.4%            | ↑                         | ↓                          |
| High Peak & N Dales      | 59.6%             | 71.3%           | 67.3%            | 70.3%            | ↓                         | ↑                          |
| Chesterfield             | 62.4%             | 61.3%           | 62.3%            | 64.6%            | ↑                         | ↑                          |
| NE Derbyshire & Bolsover | 56.8%             | 68.3%           | 70.6%            | 75.7%            | ↑                         | ↑                          |
| Amber Valley             | 27.3%             | 50.6%           | 50.3%            | 52.6%            | ↑                         | ↑                          |
| Erewash                  | 28.9%             | 69.1%           | 71.1%            | 66.9%            | ↓                         | ↓                          |
| S Derbyshire & S Dales   | 62.0%             | 62.7%           | 59.8%            | 60.4%            | ↓                         | ↑                          |
| <b>Derbyshire</b>        | <b>50.7%</b>      | <b>66.9%</b>    | <b>68.0%</b>     | <b>69.2%</b>     | <b>↑</b>                  | <b>↑</b>                   |

(\*June 2013 is the earliest month at which reliable data is available)

### Participation of Children & Young People in Their Reviews:

Participation by children in care in their reviews (for children aged 4 and over) increased during 2013/14 when compared with 2012/13. Figures for 2013/14 show that of the 1374 reviews held for children in care aged 4 and over, children participated in 1244 (90.5%). This compared with participation in 83.4% of reviews during 2012/13. Overall performance for Derbyshire has seen a very small decrease to 90.4% for the 12 months ending September 2014.

At district level, High Peak & North Dales, Amber Valley and South Derbyshire & South Dales have seen improvements in performance when comparing September 2014 outcomes with those from 2013/14. Disabled Children's performance remains unchanged at 100%.

For the 12 months ending September 2014, Disabled Children (100.0%), South Derbyshire & South Dales (99.3%) and Amber Valley (95.1%) all had participation at more than 95% of reviews for children in care aged 4 and over.

### Percentage of children in care reviews where the child participated

| District                 | 2011/12 Outcome | 2012/13 Outcome | 2013/14 Outcome | Aug 2014 Outcome | Sep 2014 Outcome | Trend 2013/14 to Sep 2014 | Trend Aug 2014 to Sep 2014 |
|--------------------------|-----------------|-----------------|-----------------|------------------|------------------|---------------------------|----------------------------|
| Disabled Children        | 86.8%           | 81.9%           | 100.0%          | 100.0%           | 100.0%           | ↔                         | ↔                          |
| High Peak & N Dales      | 92.2%           | 82.7%           | 83.2%           | 86.3%            | 87.2%            | ↑                         | ↑                          |
| Chesterfield             | 87.9%           | 85.4%           | 89.0%           | 86.3%            | 86.7%            | ↓                         | ↑                          |
| NE Derbyshire & Bolsover | 71.5%           | 84.0%           | 86.9%           | 85.9%            | 86.0%            | ↓                         | ↑                          |
| Amber Valley             | 81.6%           | 76.3%           | 93.8%           | 95.4%            | 95.1%            | ↑                         | ↓                          |
| Erewash                  | 85.6%           | 85.8%           | 91.9%           | 90.5%            | 90.0%            | ↓                         | ↓                          |
| S Derbyshire & S Dales   | 78.6%           | 85.3%           | 98.4%           | 99.3%            | 99.3%            | ↑                         | ↔                          |
| <b>Derbyshire</b>        | <b>83.4%</b>    | <b>83.4%</b>    | <b>90.5%</b>    | <b>90.3%</b>     | <b>90.4%</b>     | <b>↓</b>                  | <b>↑</b>                   |

The majority of children in care who participated in reviews did so by physically attending and speaking for themselves but the percentage who did so during the 12 months ending September 2014 (75.7%) shows a small decrease when compared with 2013/14 (76.4%). The percentages that do not attend but convey their feelings and wishes to the review through a facilitative medium (such as texting the chair, in written format, by phone, via audio or video recording) show a small increase from 20.3% for 2013/14 to 21.5% for the 12 months ending September 2014.

### Participation of children in care in their reviews by method of participation

| Participation Method   | 2011/12 Outcome | 2012/13 Outcome | 2013/14 Outcome | Aug 2014 Outcome | Sep 2014 Outcome | Trend 2013/14 to Sep 2014 | Trend Aug 2014 to Sep 2014 |
|--|-----------------|-----------------|-----------------|------------------|------------------|---------------------------|----------------------------|
| Child physically attends and speaks for themselves   | 77.0%           | 77.9%           | 76.4%           | 74.7%            | 75.7%            | ↓                         | ↑                          |
| Child physically attends and an advocate speaks on their behalf                                    | 1.2%            | 1.0%            | 0.9%            | 0.8%             | 1.0%             | ↑                         | ↑                          |
| Child attends and conveys his or her views symbolically  | 1.2%            | 0.8%            | 2.3%            | 1.9%             | 1.6%             | ↓                         | ↓                          |
| Child does not attend physically but briefs an advocate to speak for them                          | 2.0%            | 0.9%            | 0.2%            | 0.4%             | 0.3%             | ↑                         | ↓                          |
| Child does not attend but conveys their feelings and wishes to the review by a facilitative medium | 18.6%           | 19.5%           | 20.3%           | 22.2%            | 21.5%            | ↑                         | ↓                          |

During the 12 months ending September 2014, 925 children were the subject of an initial child protection conference and the child attended the conference in 79 (8.5%) cases. This was an increase from 7.0% (65/935) for 2013/14 but a small decrease from 8.8% (82/937) for the 12 months ending August 2014.

### Attendance at Initial Child Protection Conferences

|  | 2013/14 Outcome | Aug 2014 Outcome | Sep 2014 Outcome | Trend 2013/14 to Sep 2014 | Trend Aug 2014 to Sep 2014 |
|--|-----------------|------------------|------------------|---------------------------|----------------------------|
| No. Subject to an Initial CP Conferences | 935             | 937              | 925              | ↓                         | ↓                          |
| No. who attended                         | 65              | 82               | 79               | ↑                         | ↓                          |
| % who attended                           | 7.0%            | 8.8%             | 8.5%             | ↑                         | ↓                          |

Data for the 12 months ending September 2014 shows that 1994 review child protection conferences were held and that the child attended the conference in 198 (9.9%) cases. This was an increase from 7.2% (132/1838) for 2013/14 and 9.8% (200/2037) for the 12 months ending August 2014.

### Attendance at Review Child Protection Conferences

|  | 2013/14 Outcome | Aug 2014 Outcome | Sep 2014 Outcome | Trend 2013/14 to Sep 2014 | Trend Aug 2014 to Sep 2014 |
|--|-----------------|------------------|------------------|---------------------------|----------------------------|
| No. Subject to a Review CP Conferences | 1838            | 2037             | 1994             | ↑                         | ↓                          |
| No. who attended                       | 132             | 200              | 198              | ↑                         | ↓                          |
| % who attended                         | 7.2%            | 9.8%             | 9.9%             | ↑                         | ↑                          |

### Escalations:

Information relating to cases where Independent Reviewing Officers (IROs) escalated concerns is collected on a quarterly basis.

There were 11 cases during the period July to September 2014 where IROs escalated their concerns and 1 dispute resolution raised to level 2.

July 2014 – 3 cases escalated to district managers and 1 case escalated to service director:

- 1 case where there was a lack of clarity in care planning
- 2 where the IRO was concerned about the quality of placements children were in
- 1 case (escalated to service director) concerning inadequate placement opportunities

August 2014 – 2 cases escalated to district managers:

- 1 case where there were concerns around poor social work practice
- 1 case where there were delays in executing the care plan

September 2014 – 5 cases escalated to district managers and 1 dispute resolution raised to level 2:

- 3 cases where the IRO was concerned that difficulties in the placement were not being sufficiently addressed and two of these involved potential child protection concerns
- 1 case where there were delays in executing the care plan
- 1 case where there were concerns around poor social work practice
- 1 dispute resolution raised to level 2 where the IRO was unable to agree with the LA care plan. This situation remains contested but is within the court arena

### **Management Decision Making**

Monitoring of effective management decision making remains an area for development but information gathered at case file audits can give a feel for the quality of oversight and decision making.

Audits of Social Care case files during July and August 2014 found that appropriate assessments (requiring management approval/sign off) were completed for 89.4% of cases audited. Audits of MAT case files during July and August 2014 found that an appropriate response to referrals was made for 79.7% of cases audited.

Management oversight of cases through supervision was found to be appropriate in 74.6% of MAT cases and 89.4% of Social Care cases audited during July and August 2014.

### **Children in Need – Plans and Plan Reviews**

***The implementation of systems and accompanying work flows to enable recording of single assessments has required significant changes to the way Children in Need plans and plan reviews are monitored for reporting purposes. Proposed measures are:***

- ***The percentage of Children in Need that had a Child's Plan recorded within 10 working days of their assessment being completed***
- ***The percentage of Children in Need cases that were reviewed within timescales against a timescale similar to that for Child Protection cases (i.e. first review within 3 months and then reviews every 6 months)***

***However, it will be several months before reporting against these new measures has been fully developed and embedded.***

## Priority Groups

### Child Protection

#### **Section 47 Enquiries:**

The number of Section 47 enquiries initiated in Derbyshire saw a 47.7% increase when comparing numbers from 2012/13 with those from 2010/11 and Derbyshire's rate of Section 47s initiated per 10k population aged under 18 for 2012/13 was higher than both the statistical neighbour average and England outcome. However, the number of Section 47 enquiries initiated during 2013/14 represented a 12.4% decrease when compared with 2012/13. This decrease has continued for the 12 months ending September 2014.

Figures for the 12 months ending September 2014 (1606 S47s initiated) show a decrease of 18.7% compared with 2013/14. All districts have seen a decrease in the number of S47s initiated when comparing the 12 months ending September 2014 with 2013/14 figures. The largest decreases in the number of S47s initiated have been seen for High Peak & North Dales (35.0%), Disabled Children (31.0%) and Amber Valley (27.4%).

#### **Section 47 Enquiries initiated per 10k population aged under 18**

| District                      | 2011/12 Outcome | 2012/13 Outcome | 2013/14 Outcome | Aug 2014 Outcome | Sep 2014 Outcome | Trend 2013/14 to Sep 2014 | Trend Aug 2014 to Sep 2014 |
|-------------------------------|-----------------|-----------------|-----------------|------------------|------------------|---------------------------|----------------------------|
| Disabled Children             | 93              | 164             | 135             | 99               | 93               | ↓                         | ↓                          |
| High Peak & N Dales           | 97              | 144             | 122             | 87               | 79               | ↓                         | ↓                          |
| Chesterfield                  | 125             | 188             | 144             | 135              | 137              | ↓                         | ↑                          |
| NE Derbyshire & Bolsover      | 113             | 134             | 152             | 141              | 134              | ↓                         | ↓                          |
| Amber Valley                  | 147             | 171             | 113             | 81               | 82               | ↓                         | ↑                          |
| Erewash                       | 109             | 115             | 123             | 103              | 100              | ↓                         | ↓                          |
| S Derbyshire & S Dales        | 78              | 125             | 100             | 91               | 83               | ↓                         | ↓                          |
| <b>Derbyshire</b>             | <b>110</b>      | <b>145</b>      | <b>127</b>      | <b>107</b>       | <b>103</b>       | <b>↓</b>                  | <b>↓</b>                   |
| <b>Stat Neighbour Average</b> | <b>97</b>       | <b>101</b>      |                 |                  |                  |                           |                            |
| <b>England</b>                | <b>110</b>      | <b>112</b>      |                 |                  |                  |                           |                            |

#### **Initial Child Protection Conferences:**

Numbers of Initial Child Protection Conferences held in Derbyshire saw a decrease between 2011/12 (887) and 2012/13 (851) but increased during 2013/14 (935). A higher number of Initial Child Protection Conferences has been maintained for the 12 months ending September 2014 (925), but a small decrease has been seen when compared with 2013/14.

The largest decreases in the number of Initial Child Protection Conferences held when comparing numbers for the 12 months ending September 2014 with those from 2013/14 have been seen for High Peak & North Dales (19.0%), Amber Valley (17.8%) and South Derbyshire & South Dales (17.5%), with Disabled Children also seeing a decrease (10.0%). All other districts have seen an increase in numbers when comparing these periods, with Erewash (37.1%) seeing the largest increase.

### Numbers of Initial Child Protection Conferences Held

| District                 | 2011/12 Outcome | 2012/13 Outcome | 2013/14 Outcome | Aug 2014 Outcome | Sep 2014 Outcome | Trend 2013/14 to Sep 2014 | Trend Aug 2014 to Sep 2014 |
|--------------------------|-----------------|-----------------|-----------------|------------------|------------------|---------------------------|----------------------------|
| Disabled Children        | 11              | 23              | 10              | 9                | 9                | ↓                         | ↔                          |
| High Peak & N Dales      | 136             | 163             | 153             | 125              | 124              | ↓                         | ↓                          |
| Chesterfield             | 139             | 160             | 184             | 193              | 202              | ↑                         | ↑                          |
| NE Derbyshire & Bolsover | 162             | 159             | 202             | 228              | 219              | ↑                         | ↓                          |
| Amber Valley             | 184             | 151             | 152             | 129              | 125              | ↓                         | ↓                          |
| Erewash                  | 134             | 73              | 97              | 131              | 133              | ↑                         | ↑                          |
| S Derbyshire & S Dales   | 121             | 122             | 137             | 122              | 113              | ↓                         | ↓                          |
| <b>Derbyshire</b>        | <b>887</b>      | <b>851</b>      | <b>935</b>      | <b>937</b>       | <b>925</b>       | <b>↓</b>                  | <b>↓</b>                   |

The proportion of Initial Child Protection Conferences that result in children becoming the subject of a child protection plan has been relatively consistent since 2010/11. The 84.8% for 2013/14 represents a small increase compared with the 84.7% reported for 2012/13. The percentage for the 12 months ending September 2014 (83.5%) represented was a decrease of 1.3 percentage points when compared with 2013/14. The consistency in percentage outcomes for this measure is indicative of a child protection system that is consistently identifying children at risk who need multi-agency child protection plans.

### Percentage of Initial Child Protection Conferences resulting in a CP plan

| District                 | 2011/12 Outcome | 2012/13 Outcome | 2013/14 Outcome | Aug 2014 Outcome | Sep 2014 Outcome | Trend 2013/14 to Sep 2014 | Trend Aug 2014 to Sep 2014 |
|--------------------------|-----------------|-----------------|-----------------|------------------|------------------|---------------------------|----------------------------|
| Disabled Children        | 21.1%           | 60.9%           | 90.0%           | 77.8%            | 77.8%            | ↓                         | ↔                          |
| High Peak & N Dales      | 83.6%           | 79.1%           | 86.3%           | 89.6%            | 93.5%            | ↑                         | ↑                          |
| Chesterfield             | 88.9%           | 92.3%           | 75.5%           | 80.9%            | 79.2%            | ↑                         | ↓                          |
| NE Derbyshire & Bolsover | 83.4%           | 88.7%           | 91.6%           | 88.6%            | 89.0%            | ↓                         | ↑                          |
| Amber Valley             | 78.0%           | 81.1%           | 91.4%           | 88.3%            | 80.8%            | ↓                         | ↓                          |
| Erewash                  | 82.6%           | 86.5%           | 84.5%           | 86.3%            | 86.5%            | ↑                         | ↑                          |
| S Derbyshire & S Dales   | 87.5%           | 84.3%           | 78.1%           | 70.5%            | 69.0%            | ↓                         | ↓                          |
| <b>Derbyshire</b>        | <b>82.5%</b>    | <b>84.7%</b>    | <b>84.8%</b>    | <b>84.3%</b>     | <b>83.5%</b>     | <b>↓</b>                  | <b>↓</b>                   |

The percentage of Initial Child Protection Conferences held within 15 working days of S47 enquiries being initiated increased significantly from 61.0% during 2010/11 to 88.6% during 2012/13. However, performance for 2013/14 (86.6%) represented a small decrease when compared with 2012/13 outcomes.

Current performance for the 12 months ending September 2014 (93.1%) shows an increase when compared with performance outcomes for 2013/14. All districts have seen improvements in performance when comparing the 12 months ending September 2014 with 2013/14.

### Percentage of Initial Child Protection Conferences held within 15 working days of S47

| District                      | 2011/12 Outcome | 2012/13 Outcome | 2013/14 Outcome | Aug 2014 Outcome | Sep 2014 Outcome | Trend 2013/14 to Sep 2014 | Trend Aug 2014 to Sep 2014 |
|-------------------------------|-----------------|-----------------|-----------------|------------------|------------------|---------------------------|----------------------------|
| Disabled Children             | 100.0%          | 95.7%           | 90.0%           | 100.0%           | 100.0%           | ↑                         | ↔                          |
| High Peak & N Dales           | 79.4%           | 87.7%           | 83.7%           | 91.2%            | 91.1%            | ↑                         | ↓                          |
| Chesterfield                  | 78.4%           | 90.6%           | 85.9%           | 91.7%            | 91.1%            | ↑                         | ↓                          |
| NE Derbyshire & Bolsover      | 83.3%           | 80.5%           | 90.6%           | 97.4%            | 96.3%            | ↑                         | ↓                          |
| Amber Valley                  | 97.3%           | 90.7%           | 81.6%           | 89.9%            | 92.0%            | ↑                         | ↑                          |
| Erewash                       | 82.8%           | 89.0%           | 92.8%           | 93.9%            | 94.0%            | ↑                         | ↑                          |
| S Derbyshire & S Dales        | 88.4%           | 93.4%           | 86.1%           | 93.4%            | 92.0%            | ↑                         | ↓                          |
| <b>Derbyshire</b>             | <b>85.7%</b>    | <b>88.6%</b>    | <b>86.6%</b>    | <b>93.4%</b>     | <b>93.1%</b>     | <b>↑</b>                  | <b>↓</b>                   |
| <b>Stat Neighbour Average</b> | <b>76.4%</b>    | <b>68.9%</b>    |                 |                  |                  |                           |                            |
| <b>England</b>                | <b>72.3%</b>    | <b>70.0%</b>    |                 |                  |                  |                           |                            |



Any delays in convening Initial Child Protection Conferences for children subject to child abuse enquiries can clearly inhibit adequate safeguarding arrangements being made on their behalf. Derbyshire's performance for 2012/13 was above the statistical neighbour average and England outcome.

### Numbers Subject to a Child Protection Plan:

The number of children subject to a child protection plan in Derbyshire increased from 588 at 31<sup>st</sup> March 2013 to 694 at 31<sup>st</sup> March 2014 (an 18.0% increase). Investigation into these increases suggested the following:

- The increasing trend began in November 2013. This coincided with Ofsted's inspection of services for children in need of help & protection, looked after and care leavers in Derbyshire
- Increases were not been localised to a particular district
- Increases were not been specific to any particular age group
- There was some evidence which suggests that children are remaining subject to CP plans for longer
- Increases were not driven by an overall increase in the number of children referred to social care – downward trend in numbers of referrals during 2013/14
- The high prevalence of emotional abuse as the reason for child protection plans (60% at the end of April 2014) may suggest increases in domestic violence. However, during 2013/14, the number of domestic violence referrals decreased
- Projections based the increases in numbers indicated:
  - Up to as many as 28 extra initial CP conferences per month during 2014/15
  - Up to as many as 41 extra review CP conferences per month during 2014/15
  - 950+ children subject to a CP plan by 31<sup>st</sup> March 2015

At the end of September 2014 there were 646 children subject to a child protection plan, a 6.9% decrease when compared with the number at 31<sup>st</sup> March 2014 and a 4.0% decrease compared with numbers reported for the end of August 2014 (673).

At district level, the largest decreases between 31<sup>st</sup> March 2014 and the end of September 2014 have been seen for Disabled Children (63.6%), Erewash (20.8%), Amber Valley (17.1%) and High Peak & North Dales (13.4%), with North East Derbyshire & Bolsover seeing a smaller decrease (4.1%).

However, it should be noted that Chesterfield and South Derbyshire & South Dales had a higher number of children subject to a CP plan at the end of September 2014 than at 31<sup>st</sup> March 2014.

### Children subject to a child protection plan

| District                 | 2011/12 Outcome | 2012/13 Outcome | 2013/14 Outcome | Aug 2014 Outcome | Sep 2014 Outcome | Trend 2013/14 to Sep 2014 | Trend Aug 2014 to Sep 2014 |
|--------------------------|-----------------|-----------------|-----------------|------------------|------------------|---------------------------|----------------------------|
| Disabled Children        | 4               | 10              | 11              | 4                | 4                | ↓                         | ↔                          |
| High Peak & N Dales      | 72              | 101             | 112             | 95               | 97               | ↓                         | ↑                          |
| Chesterfield             | 77              | 109             | 112             | 132              | 126              | ↑                         | ↓                          |
| NE Derbyshire & Bolsover | 116             | 124             | 171             | 168              | 164              | ↓                         | ↓                          |
| Amber Valley             | 101             | 80              | 105             | 92               | 87               | ↓                         | ↓                          |
| Erewash                  | 103             | 83              | 96              | 91               | 76               | ↓                         | ↓                          |
| S Derbyshire & S Dales   | 79              | 81              | 87              | 91               | 92               | ↑                         | ↑                          |
| <b>Derbyshire</b>        | <b>552</b>      | <b>588</b>      | <b>694</b>      | <b>673</b>       | <b>646</b>       | ↓                         | ↓                          |

### Children subject to a child protection plan per 10k population aged under 18

| District                      | 2011/12 Outcome | 2012/13 Outcome | 2013/14 Outcome | Aug 2014 Outcome | Sep 2014 Outcome | Trend 2013/14 to Sep 2014 | Trend Aug 2014 to Sep 2014 |
|-------------------------------|-----------------|-----------------|-----------------|------------------|------------------|---------------------------|----------------------------|
| Disabled Children             | 13              | 32              | 35              | 13               | 13               | ↓                         | ↔                          |
| High Peak & N Dales           | 26              | 36              | 41              | 34               | 35               | ↓                         | ↑                          |
| Chesterfield                  | 38              | 53              | 55              | 65               | 62               | ↑                         | ↓                          |
| NE Derbyshire & Bolsover      | 33              | 37              | 51              | 50               | 49               | ↓                         | ↓                          |
| Amber Valley                  | 42              | 33              | 44              | 39               | 36               | ↓                         | ↓                          |
| Erewash                       | 46              | 37              | 42              | 40               | 34               | ↓                         | ↓                          |
| S Derbyshire & S Dales        | 32              | 33              | 35              | 37               | 37               | ↑                         | ↔                          |
| <b>Derbyshire</b>             | <b>35</b>       | <b>38</b>       | <b>45</b>       | <b>43</b>        | <b>41</b>        | <b>↓</b>                  | <b>↓</b>                   |
| <b>Stat Neighbour Average</b> | <b>33</b>       | <b>34</b>       |                 |                  |                  |                           |                            |
| <b>England</b>                | <b>38</b>       | <b>38</b>       |                 |                  |                  |                           |                            |

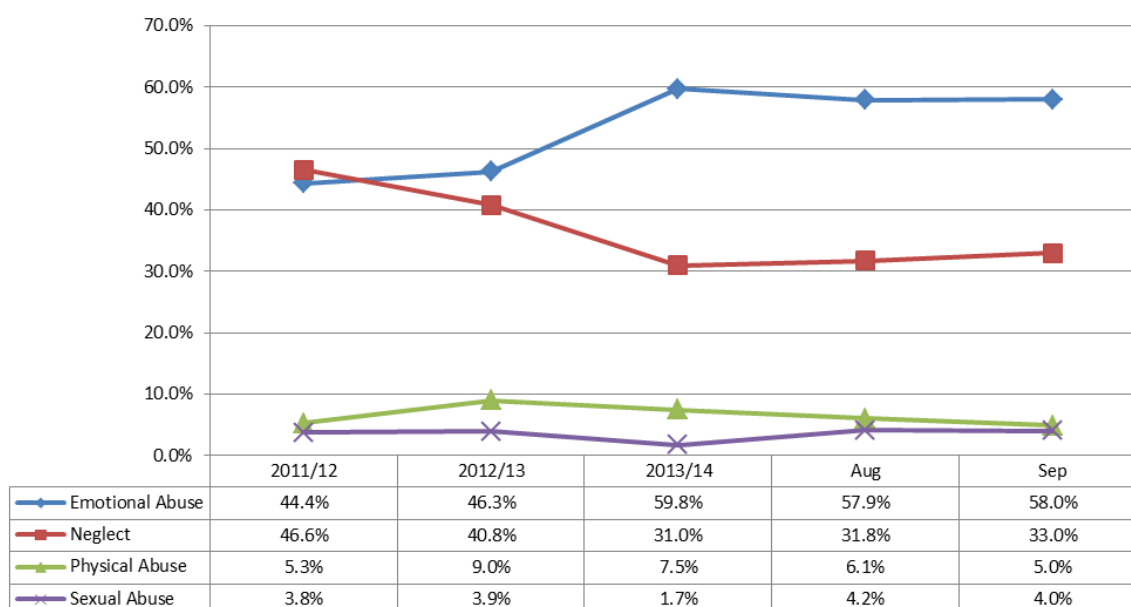
### Child Protection Plan Reasons:

Emotional abuse and neglect continue to be the primary reasons why children are subject to child protection plans, typically accounting for around 90% of plans.

Emotional abuse has increased from 46.3 at 31<sup>st</sup> March 2013 to 59.8% of plans at 31<sup>st</sup> March 2014. At the end of September 2014, 58.0% of children subject to a child protection plan had a plan with a reason of emotional abuse.

The number of children subject to a plan as a result of neglect had been falling, with a decrease from 40.8% of plans at 31<sup>st</sup> March 2013 to 31.0% at 31<sup>st</sup> March 2014. However, at the end of September 2014, 33.0% of children subject to a child protection plan had a plan with a reason of neglect, a small increase compared with 31<sup>st</sup> March 2014.

Children subject to a CP plan by plan reason



### Duration of Child Protection Plans:

The average length of time that children whose child protection plans have ended were subject to their plan has seen year on year decreases from 2010/11 to 2012/13 but increased for 2013/14. This indicator is designed to ensure that children are not subject to harmful drift.

Outcomes for the 12 months ending September 2014 show that the average length of time that children were subject to child protection plans has increased by 14 days when compared with 2013/14 and 9 days when compared with the 12 months ending August 2014.

The increases in the average length of time that children were subject to child protection plans, when comparing the 12 months ending September 2014 with 2013/14 outcomes, have been seen for Chesterfield (+36 days), Amber Valley (+31 days), North East Derbyshire & Bolsover (+12 days) and South Derbyshire & South Dales (+5 days). However, the average length of time that children were subject to plans has decreased for Disabled Children (-80 days), Erewash (-32 days) and High Peak & North Dales (-4 days).

### Average length of child protection plans (days)

| District                 | 2011/12 Outcome | 2012/13 Outcome | 2013/14 Outcome | Aug 2014 Outcome | Sep 2014 Outcome | Trend 2013/14 to Sep 2014 | Trend Aug 2014 to Sep 2014 |
|--------------------------|-----------------|-----------------|-----------------|------------------|------------------|---------------------------|----------------------------|
| Disabled Children        | 335             | 262             | 289             | 253              | 218              | ↓                         | ↓                          |
| High Peak & N Dales      | 252             | 269             | 289             | 274              | 285              | ↓                         | ↑                          |
| Chesterfield             | 293             | 280             | 255             | 289              | 290              | ↑                         | ↑                          |
| NE Derbyshire & Bolsover | 352             | 306             | 306             | 306              | 320              | ↑                         | ↑                          |
| Amber Valley             | 226             | 317             | 227             | 238              | 258              | ↑                         | ↑                          |
| Erewash                  | 322             | 241             | 422             | 391              | 393              | ↓                         | ↑                          |
| S Derbyshire & S Dales   | 259             | 285             | 288             | 301              | 293              | ↑                         | ↓                          |
| <b>Derbyshire</b>        | <b>290</b>      | <b>287</b>      | <b>290</b>      | <b>295</b>       | <b>304</b>       | <b>↑</b>                  | <b>↑</b>                   |

Continued good performance is in evidence for the percentage of child protection plans lasting 2 years or more. This measure looks at child protection plans that ended during the previous 12 months and shows the percentage where the plan ended after 2 years or more. Derbyshire's outcomes have consistently been better than statistical neighbour averages and England outcomes for this indicator.

Whilst performance for 2013/14 and the 12 months ending September 2014 shows a decrease compared with the 2012/13 outcome it is still better than the latest available statistical neighbour average and England outcomes from 2012/13.

Performance for Erewash has improved slightly but continues to be impacted by a number of sibling groups whose CP plans ended after lasting 2 years or more. Outcomes for August and September 2014 are impacted by a sibling group of 6 children whose plans ended in August after lasting 2 years or more.

### Percentage of child protection plans lasting 2 years or more

| District                      | 2011/12 Outcome | 2012/13 Outcome | 2013/14 Outcome | Aug 2014 Outcome | Sep 2014 Outcome | Trend 2013/14 to Sep 2014 | Trend Aug 2014 to Sep 2014 |
|-------------------------------|-----------------|-----------------|-----------------|------------------|------------------|---------------------------|----------------------------|
| Disabled Children             | 20.0%           | 9.1%            | 7.7%            | 6.3%             | 0.0%             | ↓                         | ↓                          |
| High Peak & N Dales           | 3.9%            | 3.0%            | 0.0%            | 0.0%             | 0.0%             | ↔                         | ↔                          |
| Chesterfield                  | 4.8%            | 0.0%            | 1.4%            | 1.6%             | 1.5%             | ↑                         | ↓                          |
| NE Derbyshire & Bolsover      | 6.7%            | 1.4%            | 3.4%            | 3.5%             | 4.2%             | ↑                         | ↑                          |
| Amber Valley                  | 0.0%            | 4.2%            | 1.7%            | 1.6%             | 1.7%             | ↔                         | ↑                          |
| Erewash                       | 6.0%            | 1.2%            | 20.3%           | 19.8%            | 17.3%            | ↓                         | ↓                          |
| S Derbyshire & S Dales        | 1.3%            | 0.0%            | 2.0%            | 1.3%             | 1.3%             | ↓                         | ↔                          |
| <b>Derbyshire</b>             | <b>3.9%</b>     | <b>1.8%</b>     | <b>3.8%</b>     | <b>4.1%</b>      | <b>4.1%</b>      | <b>↑</b>                  | <b>↔</b>                   |
| <b>Stat Neighbour Average</b> | <b>5.8%</b>     | <b>4.9%</b>     |                 |                  |                  |                           |                            |
| <b>England</b>                | <b>5.6%</b>     | <b>5.2%</b>     |                 |                  |                  |                           |                            |

### 2<sup>nd</sup> or Subsequent Child Protection Plans:

The percentage of children becoming subject to a child protection plan for a second or subsequent time (i.e. had previously been subject to a plan at any time) has increased from 10.0% of those becoming subject to a plan during 2010/11 to 16.1% of those who became subject to a plan during 2013/14. Derbyshire's percentage outcome for this indicator for 2012/13 (16.9%) was higher than our statistical neighbour average and England outcomes. Performance in previous years has been better than statistical neighbour average and England outcomes. Derbyshire's 2013/14 outcome (16.1%) whilst a small improvement compared to 2012/13, remained higher than the statistical neighbour average and England outcomes from 2012/13.

Current performance for the 12 months ending September 2014 (12.8%) shows a small improvement when compared with the outcome for 2013/14 (16.1%) and was lower than the statistical neighbour average and England outcomes from 2012/13.

High Peak & North Dales and Chesterfield were the only districts to see an increased percentage of 2<sup>nd</sup> or subsequent plans when comparing outcomes for the 12 months ending September 2014 with those for 2013/14.

### Percentage of children becoming subject to a child protection plan for a 2<sup>nd</sup> or subsequent time

| District                      | 2011/12 Outcome | 2012/13 Outcome | 2013/14 Outcome | Aug 2014 Outcome | Sep 2014 Outcome | Trend 2013/14 to Sep 2014 | Trend Aug 2014 to Sep 2014 |
|-------------------------------|-----------------|-----------------|-----------------|------------------|------------------|---------------------------|----------------------------|
| Disabled Children             | 40.0%           | 7.1%            | 15.4%           | 0.0%             | 0.0%             | ↓                         | ↔                          |
| High Peak & N Dales           | 16.9%           | 12.4%           | 12.8%           | 15.8%            | 16.9%            | ↑                         | ↑                          |
| Chesterfield                  | 16.0%           | 16.8%           | 17.2%           | 17.2%            | 17.3%            | ↑                         | ↑                          |
| NE Derbyshire & Bolsover      | 9.9%            | 23.2%           | 17.7%           | 14.4%            | 13.6%            | ↓                         | ↓                          |
| Amber Valley                  | 10.1%           | 15.4%           | 16.1%           | 11.9%            | 9.4%             | ↓                         | ↓                          |
| Erewash                       | 17.9%           | 8.8%            | 17.6%           | 7.8%             | 7.6%             | ↓                         | ↓                          |
| S Derbyshire & S Dales        | 13.1%           | 21.7%           | 14.8%           | 8.9%             | 9.6%             | ↓                         | ↑                          |
| <b>Derbyshire</b>             | <b>13.9%</b>    | <b>16.9%</b>    | <b>16.1%</b>    | <b>13.0%</b>     | <b>12.8%</b>     | <b>↓</b>                  | <b>↓</b>                   |
| <b>Stat Neighbour Average</b> | <b>15.3%</b>    | <b>16.0%</b>    |                 |                  |                  |                           |                            |
| <b>England</b>                | <b>13.8%</b>    | <b>14.9%</b>    |                 |                  |                  |                           |                            |

For children becoming subject to a child protection plan for a second or subsequent time, the average period of time since their previous plan ended increased from an average of 157 weeks during 2012/13 to 177 weeks on average for those who became subject to a second or subsequent plan during 2013/14. This average has seen a further increase for the 12 months ending September 2014 (185 weeks).

### Average number of weeks between CP plans

| District                 | 2012/13 Outcome | 2013/14 Outcome | Aug 2014 Outcome | Sep 2014 Outcome | Trend 2013/14 to Sep 2014 | Trend Aug 2014 to Sep 2014 |
|--------------------------|-----------------|-----------------|------------------|------------------|---------------------------|----------------------------|
| Disabled Children        | 57              | 132             | -                | -                | -                         | -                          |
| High Peak & N Dales      | 89              | 196             | 172              | 170              | ↓                         | ↓                          |
| Chesterfield             | 183             | 220             | 203              | 203              | ↓                         | ↔                          |
| NE Derbyshire & Bolsover | 176             | 120             | 103              | 117              | ↓                         | ↑                          |
| Amber Valley             | 167             | 192             | 220              | 210              | ↑                         | ↓                          |
| Erewash                  | 234             | 229             | 298              | 298              | ↑                         | ↔                          |
| S Derbyshire & S Dales   | 120             | 150             | 252              | 252              | ↑                         | ↔                          |
| <b>Derbyshire</b>        | <b>157</b>      | <b>177</b>      | <b>183</b>       | <b>185</b>       | <b>↑</b>                  | <b>↑</b>                   |

The percentage of children becoming subject to a child protection plan for a second or subsequent time whose previous plan had lasted for two years or more has shown a decrease when comparing figures for the 12 months ending September 2014 with figures for 2013/14.

It should be noted that, for the 12 months ending September 2014, High Peak & North Dales was the only district where a child became subject to a child protection plan for a second or subsequent time after a previous plan had lasted for 2 years or more, and the percentage outcome shown for refers to just one child.

### Percentage of 2<sup>nd</sup> or subsequent plans where previous plan lasted 2 years or more

| District                 | 2012/13 Outcome | 2013/14 Outcome | Aug 2014 Outcome | Sep 2014 Outcome | Trend 2013/14 to Sep 2014 | Trend Aug 2014 to Sep 2014 |
|--------------------------|-----------------|-----------------|------------------|------------------|---------------------------|----------------------------|
| Disabled Children        | 0.0%            | 0.0%            | -                | -                | -                         | -                          |
| High Peak & N Dales      | 6.3%            | 0.0%            | 5.6%             | 5.0%             | ↑                         | ↓                          |
| Chesterfield             | 9.4%            | 0.0%            | 0.0%             | 0.0%             | ↔                         | ↔                          |
| NE Derbyshire & Bolsover | 3.6%            | 8.8%            | 0.0%             | 0.0%             | ↓                         | ↔                          |
| Amber Valley             | 5.3%            | 17.4%           | 0.0%             | 0.0%             | ↓                         | ↔                          |
| Erewash                  | 16.7%           | 0.0%            | 0.0%             | 0.0%             | ↔                         | ↔                          |
| S Derbyshire & S Dales   | 0.0%            | 0.0%            | 0.0%             | 0.0%             | ↔                         | ↔                          |
| <b>Derbyshire</b>        | <b>5.6%</b>     | <b>5.3%</b>     | <b>0.9%</b>      | <b>1.0%</b>      | <b>↓</b>                  | <b>↑</b>                   |

A larger percentage of children becoming subject to a child protection plan for a second or subsequent time have done so after a previous plan lasting three months or less. During the 12 months ending September 2014, 18.4% of children becoming subject to a second or subsequent plan did so after a previous plan that lasted three months or less. This outcome compares with 24.2% for 2013/14 and 24.8% for 2012/13.

### Percentage of 2<sup>nd</sup> or subsequent plans where previous plan lasted 3 months or less

| District                 | 2012/13 Outcome | 2013/14 Outcome | Aug 2014 Outcome | Sep 2014 Outcome | Trend 2013/14 to Sep 2014 | Trend Aug 2014 to Sep 2014 |
|--------------------------|-----------------|-----------------|------------------|------------------|---------------------------|----------------------------|
| Disabled Children        | 0.0%            | 0.0%            | -                | -                | -                         | -                          |
| High Peak & N Dales      | 12.5%           | 41.2%           | 22.2%            | 30.0%            | ↓                         | ↑                          |
| Chesterfield             | 9.4%            | 0.0%            | 18.5%            | 18.5%            | ↑                         | ↔                          |
| NE Derbyshire & Bolsover | 39.3%           | 2.9%            | 0.0%             | 0.0%             | ↓                         | ↔                          |
| Amber Valley             | 31.6%           | 43.5%           | 21.4%            | 20.0%            | ↓                         | ↓                          |
| Erewash                  | 16.7%           | 60.0%           | 22.2%            | 22.2%            | ↓                         | ↔                          |
| S Derbyshire & S Dales   | 34.8%           | 31.3%           | 50.0%            | 50.0%            | ↑                         | ↔                          |
| <b>Derbyshire</b>        | <b>24.8%</b>    | <b>24.2%</b>    | <b>16.8%</b>     | <b>18.4%</b>     | <b>↑</b>                  | <b>↑</b>                   |

It should also be noted that the average duration of previous plans increased from 272 days for those becoming subject to a second or subsequent plan in 2012/13 to 321 days for those during

2013/14. However, this average saw a decrease to 292 days for the 12 months ending September 2014.

#### Average duration of previous CP plans (Days)

| District                 | 2012/13 Outcome | 2013/14 Outcome | Aug 2014 Outcome | Sep 2014 Outcome | Trend 2013/14 to Sep 2014 | Trend Aug 2014 to Sep 2014 |
|--------------------------|-----------------|-----------------|------------------|------------------|---------------------------|----------------------------|
| Disabled Children        | 236             | 533             | -                | -                | -                         | -                          |
| High Peak & N Dales      | 294             | 189             | 251              | 235              | ↑                         | ↓                          |
| Chesterfield             | 350             | 397             | 317              | 317              | ↓                         | ↔                          |
| NE Derbyshire & Bolsover | 238             | 378             | 345              | 355              | ↓                         | ↑                          |
| Amber Valley             | 224             | 368             | 285              | 203              | ↓                         | ↓                          |
| Erewash                  | 350             | 153             | 265              | 265              | ↑                         | ↔                          |
| S Derbyshire & S Dales   | 210             | 285             | 259              | 259              | ↓                         | ↔                          |
| <b>Derbyshire</b>        | <b>272</b>      | <b>321</b>      | <b>301</b>       | <b>292</b>       | <b>↓</b>                  | <b>↓</b>                   |

#### Child Protection Visits:

Ensuring that social workers visit children subject to a child protection plan within timescales continues to be an area of scrutiny within the service. From the beginning of September it was agreed that visits would be measured against a revised timescale requiring a child's first visit after becoming subject to a CP plan to be carried out within 10 working days (with subsequent visits being made with a maximum of 20 working days. To reflect this, the outcomes below measure performance against the following criteria:

- For children who became subject to a CP plan prior to 1<sup>st</sup> September 2014 ALL visits are measured against a 20 working day maximum timescale
- For children who became subject to a CP on or after 1<sup>st</sup> September 2014 visits are measured against a timescale requiring the first visit to be carried out within 10 working days and subsequent visits within a maximum of 20 working days

In tandem with these revised timescales, Frameworki has been amended to provide easier, free text boxes in conference and core group episodes for chairs and social workers to ensure good quality recording of the expected visit requirements and the reasons for those requirements. It is proposed that embedded QA audit processes are used to monitor and test the reality of bespoke visiting, which is envisaged will give a better quality feel for improving practice.

The percentage of children where all of their visits during the 12 months ending September 2014 were carried out within timescales (56.6%) shows a decrease when compared with outcomes for 2013/14 (64.5%) and for the 12 months ending August 2014 (60.0%). It should be noted that performance has improved for Disabled Children and High Peak & North Dales when compared with 2013/14 outcomes.

#### Child protection visits – Percentage of cases where all visits were completed within timescale

| District                 | 2011/12 Outcome | 2012/13 Outcome | 2013/14 Outcome | Aug 2014 Outcome | Sep 2014 Outcome | Trend 2013/14 to Sep 2014 | Trend Aug 2014 to Sep 2014 |
|--------------------------|-----------------|-----------------|-----------------|------------------|------------------|---------------------------|----------------------------|
| Disabled Children        | 40.0%           | 57.1%           | 81.0%           | 83.3%            | 89.5%            | ↑                         | ↑                          |
| High Peak & N Dales      | 53.7%           | 58.0%           | 49.8%           | 54.9%            | 53.6%            | ↑                         | ↓                          |
| Chesterfield             | 29.5%           | 53.4%           | 66.8%           | 63.3%            | 57.4%            | ↓                         | ↓                          |
| NE Derbyshire & Bolsover | 66.0%           | 72.8%           | 88.8%           | 79.8%            | 79.9%            | ↓                         | ↑                          |
| Amber Valley             | 35.4%           | 55.3%           | 70.6%           | 55.3%            | 48.0%            | ↓                         | ↓                          |
| Erewash                  | 28.0%           | 8.8%            | 50.3%           | 45.0%            | 34.9%            | ↓                         | ↓                          |
| S Derbyshire & S Dales   | 32.7%           | 45.5%           | 44.4%           | 44.0%            | 44.0%            | ↓                         | ↔                          |
| <b>Derbyshire</b>        | <b>41.6%</b>    | <b>51.6%</b>    | <b>64.5%</b>    | <b>60.0%</b>     | <b>56.6%</b>     | <b>↓</b>                  | <b>↓</b>                   |

Current performance measuring the percentage of total visits made during the 12 months ending September 2014 shows that 93.1% of all visits made were within timescales. Performance has decreased by 0.9 percentage points when compared with the 2013/14 outcome.

#### Child protection visits – Percentage of total visits completed within timescale

| District                 | 2011/12 Outcome | 2012/13 Outcome | 2013/14 Outcome | Aug 2014 Outcome | Sep 2014 Outcome | Trend 2013/14 to Sep 2014 | Trend Aug 2014 to Sep 2014 |
|--------------------------|-----------------|-----------------|-----------------|------------------|------------------|---------------------------|----------------------------|
| Disabled Children        | 85.0%           | 100.0%          | 97.8%           | 97.6%            | 98.1%            | ↑                         | ↑                          |
| High Peak & N Dales      | 91.6%           | 94.5%           | 90.8%           | 93.1%            | 93.3%            | ↑                         | ↑                          |
| Chesterfield             | 84.4%           | 83.0%           | 94.9%           | 92.6%            | 92.1%            | ↓                         | ↓                          |
| NE Derbyshire & Bolsover | 95.1%           | 98.0%           | 98.7%           | 98.1%            | 98.0%            | ↓                         | ↓                          |
| Amber Valley             | 84.1%           | 85.2%           | 95.1%           | 92.2%            | 91.7%            | ↓                         | ↓                          |
| Erewash                  | 79.4%           | 67.5%           | 89.2%           | 88.6%            | 87.3%            | ↓                         | ↓                          |
| S Derbyshire & S Dales   | 84.6%           | 93.6%           | 90.8%           | 91.2%            | 90.9%            | ↑                         | ↓                          |
| <b>Derbyshire</b>        | <b>87.0%</b>    | <b>90.0%</b>    | <b>94.0%</b>    | <b>93.4%</b>     | <b>93.1%</b>     | ↓                         | ↓                          |

#### Child Protection Reviews:

The percentage of child protection cases that are reviewed within timescale remains high, with 99.1% of cases reviewed within timescale for the 12 months ending September 2014. North East Derbyshire & Bolsover (4 children not reviewed in timescale) was the only districts not to see performance at 100% against this indicator for the 12 months ending September 2014.

#### Percentage of child protection cases reviewed within timescales

| District                      | 2011/12 Outcome | 2012/13 Outcome | 2013/14 Outcome | Aug 2014 Outcome | Sep 2014 Outcome | Trend 2013/14 to Sep 2014 | Trend Aug 2014 to Sep 2014 |
|-------------------------------|-----------------|-----------------|-----------------|------------------|------------------|---------------------------|----------------------------|
| Disabled Children             | 100.0%          | 100.0%          | 100.0%          | 100.0%           | 100.0%           | ↔                         | ↔                          |
| High Peak & N Dales           | 100.0%          | 100.0%          | 98.9%           | 100.0%           | 100.0%           | ↑                         | ↔                          |
| Chesterfield                  | 100.0%          | 100.0%          | 100.0%          | 100.0%           | 100.0%           | ↔                         | ↔                          |
| NE Derbyshire & Bolsover      | 100.0%          | 100.0%          | 99.1%           | 96.8%            | 96.6%            | ↓                         | ↓                          |
| Amber Valley                  | 100.0%          | 100.0%          | 100.0%          | 100.0%           | 100.0%           | ↔                         | ↔                          |
| Erewash                       | 100.0%          | 100.0%          | 98.6%           | 98.5%            | 100.0%           | ↑                         | ↑                          |
| S Derbyshire & S Dales        | 100.0%          | 100.0%          | 100.0%          | 100.0%           | 100.0%           | ↔                         | ↔                          |
| <b>Derbyshire</b>             | <b>100.0%</b>   | <b>100.0%</b>   | <b>99.4%</b>    | <b>99.0%</b>     | <b>99.1%</b>     | ↓                         | ↑                          |
| <i>Stat Neighbour Average</i> | <i>96.8%</i>    |                 |                 |                  |                  |                           |                            |
| <i>England</i>                | <i>96.7%</i>    |                 |                 |                  |                  |                           |                            |

#### Child Sexual Exploitation

Functionality in Frameworki to enable reporting on numbers of referrals where child sexual exploitation (CSE) has been flagged as a potential issue has only been in place since the beginning of October 2012. Therefore, only limited information is available from which to identify any trends.

Information available for the 12 months ending September 2014 shows that CSE was flagged as a potential issue in 2.2% of referrals to Social Care. This represents a small 0.1 percentage point increase when compared with 2.1% for 2013/14 and a 0.2 percentage point increase when compared with the 12 months ending August 2014.

### Number (and percentage) of referrals to Social Care where CSE was flagged as a potential issue

| District                 | 2013/14 Outcome   | Aug 2014 Outcome  | Sep 2014 Outcome  | Trend 2013/14 to Sep 2014 | Trend Aug 2014 to Sep 2014 |
|--------------------------|-------------------|-------------------|-------------------|---------------------------|----------------------------|
| Disabled Children        | 0 (0.0%)          | 1 (0.3%)          | 1 (0.3%)          | ↑                         | ↔                          |
| High Peak & N Dales      | 73 (3.7%)         | 64 (3.9%)         | 68 (4.1%)         | ↓                         | ↑                          |
| Chesterfield             | 39 (2.0%)         | 32 (1.8%)         | 32 (1.8%)         | ↓                         | ↔                          |
| NE Derbyshire & Bolsover | 41 (1.5%)         | 42 (1.6%)         | 40 (1.6%)         | ↓                         | ↓                          |
| Amber Valley             | 49 (2.4%)         | 38 (2.1%)         | 39 (2.2%)         | ↓                         | ↑                          |
| Erewash                  | 34 (1.8%)         | 25 (1.5%)         | 27 (1.6%)         | ↓                         | ↑                          |
| S Derbyshire & S Dales   | 32 (2.1%)         | 28 (1.9%)         | 37 (2.5%)         | ↑                         | ↑                          |
| <b>Derbyshire</b>        | <b>268 (2.1%)</b> | <b>230 (2.0%)</b> | <b>244 (2.2%)</b> | <b>↓</b>                  | <b>↑</b>                   |

(Figures quoted are for the 12 month period up to each month end)

High Peak & North Dales has consistently had higher numbers of referrals made to Social Care where CSE was flagged as a potential issue. Feedback from the district manager suggests:

- There isn't more CSE in High Peak & North Dales than elsewhere but there is higher reporting at referral
- High awareness across Social Care/MAT staff and wider agencies which has led to increased classification of CSE at referral. There has been specific training in schools and with the staff groups on CSE

For the 12 months ending September 2014, the percentage of referrals where CSE was flagged as a potential issue where a decision was made within 1 working day (93.4%) was slightly higher than the percentage for all referrals (91.5%). This was an improvement in performance when compared with the percentages for 2013/14 and for the 12 months ending August 2014.

### Percentage of referrals to Social Care where CSE was flagged as a potential issue that had a decision made within 1 working day

| District                 | 2013/14 Outcome | Aug 2014 Outcome | Sep 2014 Outcome | Trend 2013/14 to Sep 2014 | Trend Aug 2014 to Sep 2014 |
|--------------------------|-----------------|------------------|------------------|---------------------------|----------------------------|
| Disabled Children        | -               | 100.0%           | 100.0%           | -                         | ↔                          |
| High Peak & N Dales      | 70.3%           | 84.4%            | 91.2%            | ↑                         | ↑                          |
| Chesterfield             | 89.7%           | 96.9%            | 96.9%            | ↑                         | ↔                          |
| NE Derbyshire & Bolsover | 100.0%          | 97.6%            | 97.5%            | ↓                         | ↓                          |
| Amber Valley             | 81.6%           | 86.8%            | 87.2%            | ↑                         | ↑                          |
| Erewash                  | 94.1%           | 92.0%            | 88.9%            | ↓                         | ↓                          |
| S Derbyshire & S Dales   | 100.0%          | 100.0%           | 100.0%           | ↔                         | ↔                          |
| <b>Derbyshire</b>        | <b>86.4%</b>    | <b>91.7%</b>     | <b>93.4%</b>     | <b>↑</b>                  | <b>↑</b>                   |

(Figures quoted are for the 12 month period up to each month end)

Systems in Derbyshire have now been implemented, going 'live' on 30<sup>th</sup> March, to enable recording of single assessments. Information for the 12 months ending 30<sup>th</sup> September 2014 shows that 55 single assessments have been completed where CSE was flagged as a potential issue and 45 of these assessments were completed within 45 working days of referral (81.8%). This compares with 84.4% of all single assessments completed within timescale (as reported above).



### Number of Single Assessments completed with CSE flagged as a 'Presenting Issue' – 2014/15 to 30<sup>th</sup> September

| District                 | Apr 2014 | May 2014 | Jun 2014  | Jul 2014  | Aug 2014 | Sep 2014 | Year to Date |
|--------------------------|----------|----------|-----------|-----------|----------|----------|--------------|
| Disabled Children        | 0        | 0        | 0         | 0         | 0        | 0        | 0            |
| High Peak & N Dales      | 0        | 1        | 2         | 0         | 1        | 4        | 8            |
| Chesterfield             | 0        | 0        | 3         | 3         | 2        | 0        | 8            |
| NE Derbyshire & Bolsover | 4        | 3        | 11        | 5         | 0        | 1        | 24           |
| Amber Valley             | 0        | 0        | 2         | 0         | 1        | 2        | 5            |
| Erewash                  | 0        | 0        | 1         | 3         | 0        | 0        | 4            |
| S Derbyshire & S Dales   | 0        | 1        | 0         | 2         | 2        | 1        | 6            |
| <b>Derbyshire</b>        | <b>4</b> | <b>5</b> | <b>19</b> | <b>13</b> | <b>6</b> | <b>8</b> | <b>55</b>    |

### Percentage of Single assessments completed with CSE flagged as a 'Presenting Issue' that were completed within 45 working days – 2014/15 to 31<sup>st</sup> August

| District                 | Apr 2014      | May 2014      | Jun 2014     | Jul 2014     | Aug 2014     | Sep 2014     | Year to Date |
|--------------------------|---------------|---------------|--------------|--------------|--------------|--------------|--------------|
| Disabled Children        | -             | -             | -            | -            | -            | -            | -            |
| High Peak & N Dales      | -             | 100.0%        | 100.0%       | -            | 100.0%       | 100.0%       | 100.0%       |
| Chesterfield             | -             | -             | 100.0%       | 100.0%       | 0.0%         | -            | 75.0%        |
| NE Derbyshire & Bolsover | 100.0%        | 100.0%        | 90.9%        | 80.0%        | -            | 0.0%         | 87.5%        |
| Amber Valley             | -             | -             | 100.0%       | -            | 100.0%       | 100.0%       | 100.0%       |
| Erewash                  | -             | -             | 100.0%       | 33.3%        | -            | -            | 50.0%        |
| S Derbyshire & S Dales   | -             | 100.0%        | -            | 50.0%        | 50.0%        | 0.0%         | 50.0%        |
| <b>Derbyshire</b>        | <b>100.0%</b> | <b>100.0%</b> | <b>94.7%</b> | <b>69.2%</b> | <b>50.0%</b> | <b>75.0%</b> | <b>81.8%</b> |

### Children Who Go Missing From Home or Care

The overall number of individual children who go missing from home or care in Derbyshire has been reducing, with a 42.7% reduction seen between 2010/11 and 2013/14. Figures for the 12 months ending September 2014 represented a further reduction of 9.7% when compared with 2013/14.

### Number of children going missing (overall total)

| District                          | 2011/12 Outcome | 2012/13 Outcome | 2013/14 Outcome | Aug 2014 Outcome | Sep 2014 Outcome | Trend 2013/14 to Sep 2014 | Trend Aug 2014 to Sep 2014 |
|-----------------------------------|-----------------|-----------------|-----------------|------------------|------------------|---------------------------|----------------------------|
| High Peak & N Dales               | 98              | 83              | 51              | 48               | 51               | ↔                         | ↓                          |
| Chesterfield                      | 76              | 50              | 34              | 33               | 31               | ↓                         | ↓                          |
| NE Derbyshire & Bolsover          | 105             | 64              | 68              | 60               | 62               | ↓                         | ↑                          |
| Amber Valley                      | 64              | 61              | 40              | 45               | 48               | ↑                         | ↑                          |
| Erewash                           | 144             | 122             | 94              | 79               | 77               | ↓                         | ↓                          |
| S Derbyshire & S Dales            | 75              | 93              | 58              | 51               | 45               | ↓                         | ↓                          |
| N/A – District info not available | 37              | 35              | 23              | 22               | 24               | ↑                         | ↑                          |
| <b>Derbyshire</b>                 | <b>524</b>      | <b>459</b>      | <b>349</b>      | <b>315</b>       | <b>315</b>       | <b>↓</b>                  | <b>↔</b>                   |

*(District figures may not sum to the Derbyshire total as some children have gone missing in more than one district)*

The overall number of instances of a child going missing from home or care in Derbyshire has also been reducing. A 46.8% decrease was seen between 2010/11 and 2013/14. Figures for the 12 months ending September 2014 represented a further reduction of 11.2% when compared with 2013/14. However, the number of instances of children going missing during the 12 months ending September 2014 was an increase (3.6%) when compared with the figures reported for the 12 months ending August 2014.

### Number of missing episodes (overall total)

| District                        | 2011/12 Outcome | 2012/13 Outcome | 2013/14 Outcome | Aug 2014 Outcome | Sep 2014 Outcome | Trend 2013/14 to Sep 2014 | Trend Aug 2014 to Sep 2014 |
|---------------------------------|-----------------|-----------------|-----------------|------------------|------------------|---------------------------|----------------------------|
| High Peak & N Dales             | 264             | 198             | 136             | 118              | 118              | ↓                         | ↔                          |
| Chesterfield                    | 124             | 71              | 51              | 47               | 45               | ↓                         | ↓                          |
| NE Derbyshire & Bolsover        | 193             | 136             | 138             | 120              | 132              | ↓                         | ↑                          |
| Amber Valley                    | 82              | 116             | 92              | 73               | 76               | ↓                         | ↑                          |
| Erewash                         | 362             | 242             | 209             | 161              | 163              | ↓                         | ↑                          |
| S Derbyshire & S Dales          | 155             | 200             | 86              | 88               | 92               | ↑                         | ↑                          |
| N/A – District info unavailable | 46              | 45              | 30              | 29               | 33               | ↑                         | ↑                          |
| <b>Derbyshire</b>               | <b>1226</b>     | <b>1008</b>     | <b>742</b>      | <b>636</b>       | <b>659</b>       | ↓                         | ↑                          |

Available information for the 12 months ending September 2014 also shows that a linked return interview was received in 86.3% of instances of a child going missing following their return/being found and that 56.9% of these interviews were held within 72 hours.

The number of individual children who go missing from care in Derbyshire had been reducing, with a 48.2% reduction seen between 2010/11 and 2013/14. However, figures for the 12 months ending September 2014 represented an 8.8% increase when compared with 2013/14.

### Number of children going missing from care

| District                        | 2011/12 Outcome | 2012/13 Outcome | 2013/14 Outcome | Aug 2014 Outcome | Sep 2014 Outcome | Trend 2013/14 to Sep 2014 | Trend Aug 2014 to Sep 2014 |
|---------------------------------|-----------------|-----------------|-----------------|------------------|------------------|---------------------------|----------------------------|
| High Peak & N Dales             | 29              | 16              | 11              | 12               | 11               | ↔                         | ↓                          |
| Chesterfield                    | 23              | 9               | 8               | 11               | 10               | ↑                         | ↓                          |
| NE Derbyshire & Bolsover        | 27              | 18              | 11              | 11               | 13               | ↑                         | ↑                          |
| Amber Valley                    | 14              | 12              | 6               | 6                | 6                | ↔                         | ↔                          |
| Erewash                         | 31              | 19              | 16              | 15               | 15               | ↓                         | ↔                          |
| S Derbyshire & S Dales          | 11              | 14              | 8               | 8                | 8                | ↔                         | ↔                          |
| N/A – District info unavailable | 6               | 9               | 7               | 11               | 12               | ↑                         | ↑                          |
| <b>Derbyshire</b>               | <b>97</b>       | <b>77</b>       | <b>57</b>       | <b>60</b>        | <b>62</b>        | ↑                         | ↑                          |

*(District figures may not sum to the Derbyshire total as some children have gone missing in more than one district)*

The number of instances of a child going missing from care in Derbyshire had also been reducing. A 70.0% decrease was seen between 2010/11 and 2013/14. However, figures for the 12 months ending September 2014 represent an 11.7% increase when compared with 2013/14.

### Number of missing from care episodes

| District                          | 2011/12 Outcome | 2012/13 Outcome | 2013/14 Outcome | Aug 2014 Outcome | Sep 2014 Outcome | Trend 2013/14 to Sep 2014 | Trend Aug 2014 to Sep 2014 |
|-----------------------------------|-----------------|-----------------|-----------------|------------------|------------------|---------------------------|----------------------------|
| High Peak & N Dales               | 120             | 55              | 26              | 19               | 18               | ↓                         | ↓                          |
| Chesterfield                      | 53              | 12              | 14              | 19               | 19               | ↑                         | ↔                          |
| NE Derbyshire & Bolsover          | 65              | 51              | 25              | 23               | 26               | ↑                         | ↑                          |
| Amber Valley                      | 18              | 29              | 29              | 17               | 16               | ↓                         | ↓                          |
| Erewash                           | 159             | 77              | 32              | 40               | 45               | ↑                         | ↑                          |
| S Derbyshire & S Dales            | 32              | 61              | 19              | 27               | 30               | ↑                         | ↑                          |
| N/A – District info not available | 8               | 14              | 9               | 16               | 18               | ↑                         | ↑                          |
| <b>Derbyshire</b>                 | <b>455</b>      | <b>299</b>      | <b>154</b>      | <b>161</b>       | <b>172</b>       | ↑                         | ↑                          |

### **Children Missing From Education**

The number of children referred as missing from education (CME) has been reducing, with a 15.6% reduction seen when comparing 2012/13 (428) figures with 2010/11 (507). However, figures for 2013/14 (476) show an increase of 11.2% when compared with 2012/13.

Similarly, the number of cases found/resolved has also been reducing, with a 23.5% reduction seen when comparing 2012/13 (419) figures with 2010/11 (548). However, as with the number of cases referred, figures for 2013/14 (455) show an increase (8.6%) when compared with 2012/13.

So far during 2014/15 there have been 58 children referred as missing from education and 53 cases found/resolved. In addition, available information shows that there are currently 53 children missing from education in Derbyshire.

To reduce the risk of children and young people falling out of the education system, Derbyshire's MATs and Access & Inclusion services provide support and work closely together to ensure coherence and consistency within the system. These teams ensure that the process for identifying, investigating and finding CME is carried out. The duties and responsibilities of these teams include;

- Tracking CME through a dedicated CME coordinator
- Ensuring all notifications of CME are correctly recorded on the relevant databases
- Investigating relevant databases (e.g. S2S, Lost Pupil Database)
- Coordinating casework in relation to investigating CME including working closely with relevant services and agencies to determine appropriate provision for the child
- Ensuring admission into school through the admissions process and the 'Fair Access Protocol' where required
- Reviewing and monitoring cases held until re-engagement in education is successfully secured through the Education Planning Group – Pupils Missing out on Education
- Providing relevant reports for SMT, performance focus groups and relevant boards
- Hold regular CME meeting to review complex and urgent cases
- Raise awareness of the CME policy and practice including training/awareness raising events for school governors and partner organisations

Derbyshire's CME policy has been published on the Schools Extranet.

### Children missing from education

| Period                   |           | Number of missing cases referred in period | Number of missing cases found/resolved in period |
|--------------------------|-----------|--|--|
| 2011/12                  | T1 Autumn | 111  | 107  |
|                          | T2 Autumn | 88   | 96   |
|                          | T3 Spring | 70   | 61   |
|                          | T4 Spring | 57   | 52   |
|                          | T5 Summer | 62   | 67   |
|                          | T6 Summer | 74   | 80   |
| <b>Total for 2011/12</b> |           | <b>462</b>                                 | <b>463</b>                                       |
| 2012/13                  | T1 Autumn | 93   | 113  |
|                          | T2 Autumn | 55   | 59   |
|                          | T3 Spring | 62   | 56   |
|                          | T4 Spring | 54   | 43   |
|                          | T5 Summer | 69   | 53   |
|                          | T6 Summer | 95   | 95   |
| <b>Total for 2012/13</b> |           | <b>428</b>                                 | <b>419</b>                                       |
| 2013/14                  | T1 Autumn | 118  | 119  |
|                          | T2 Autumn | 73   | 83   |
|                          | T3 Spring | 54   | 52   |
|                          | T4 Spring | 72   | 61   |
|                          | T5 Summer | 61   | 48   |
|                          | T6 Summer | 98   | 92   |
| <b>Total for 2013/14</b> |           | <b>476</b>                                 | <b>455</b>                                       |
| 2014/15                  | T1 Autumn | 58   | 53   |
| <b>Total for 2014/15</b> |           | <b>58</b>                                  | <b>53</b>  |

### Children in Care Placed More Than 20 Miles from Home

The percentage of children in care who were placed more than 20 miles from home at the end of September 2014 (16.0%) was a small decrease when compared with the percentage at the end of March 2014 (19.7%). Statistical Neighbour and England figures for 2012/13, 2011/12 and 2010/11 show that Derbyshire's percentage placed more than 20 miles from home has consistently been in-line with or below the average for our statistical neighbour authorities and the percentage for England overall but slightly above the England figure for 2012/13.

Derbyshire's percentage at the end of September 2014 is below the statistical neighbour average and in-line with the England figure from previous years. Amber Valley is the only district not to have seen an improvement in performance when compared with outcomes at the end of 2013/14.

### Percentage placed more than 20 miles from home (regardless of whether inside or outside LA)

| District                      | 2011/12 Outcome | 2012/13 Outcome | 2013/14 Outcome | Aug 2014 Outcome | Sep 2014 Outcome | Trend 2013/14 to Sep 2014 | Trend Aug 2014 to Sep 2014 |
|-------------------------------|-----------------|-----------------|-----------------|------------------|------------------|---------------------------|----------------------------|
| Disabled Children             | 30.8%           | 26.7%           | 20.5%           | 17.5%            | 16.3%            | ↓                         | ↓                          |
| High Peak & N Dales           | 19.6%           | 27.7%           | 31.6%           | 22.5%            | 22.0%            | ↓                         | ↓                          |
| Chesterfield                  | 6.8%            | 5.6%            | 9.6%            | 4.2%             | 6.6%             | ↓                         | ↑                          |
| NE Derbyshire & Bolsover      | 14.1%           | 15.0%           | 20.7%           | 16.1%            | 17.1%            | ↓                         | ↑                          |
| Amber Valley                  | 18.5%           | 18.5%           | 11.1%           | 12.7%            | 11.7%            | ↑                         | ↓                          |
| Erewash                       | 17.9%           | 14.3%           | 22.2%           | 18.7%            | 19.1%            | ↓                         | ↑                          |
| S Derbyshire & S Dales        | 24.1%           | 27.1%           | 23.1%           | 20.0%            | 21.9%            | ↓                         | ↑                          |
| <b>Derbyshire</b>             | <b>16.2%</b>    | <b>17.0%</b>    | <b>19.7%</b>    | <b>15.3%</b>     | <b>16.0%</b>     | <b>↓</b>                  | <b>↑</b>                   |
| <b>Stat Neighbour Average</b> | <b>18.0%</b>    | <b>19.0%</b>    |                 |                  |                  |                           |                            |
| <b>England</b>                | <b>16.0%</b>    | <b>16.0%</b>    |                 |                  |                  |                           |                            |

The percentage of children in care who were placed outside the Derbyshire LA boundary at the end of September 2014 (28.8%) is a small decrease when compared with the percentage at the end of March 2014 (29.1%).

Available statistical neighbour and England figures for 2012/13, 2011/12 and 2010/11 show that Derbyshire's percentage placed outside the LA boundary has consistently been slightly higher than the average for our statistical neighbours, but below the overall England percentage.

Disabled Children, North East Derbyshire & Bolsover, Amber Valley and South Derbyshire & South Dales all saw an increase in the percentage of children in care who were placed outside the LA boundary when comparing figures for the end of September 2014 with those as at the end of the 2013/14 reporting year.

#### Percentage placed outside the LA boundary (regardless of distance from home)

| District                      | 2011/12 Outcome | 2012/13 Outcome | 2013/14 Outcome | Aug 2014 Outcome | Sep 2014 Outcome | Trend 2013/14 to Sep 2014 | Trend Aug 2014 to Sep 2014 |
|-------------------------------|-----------------|-----------------|-----------------|------------------|------------------|---------------------------|----------------------------|
| Disabled Children             | 23.1%           | 23.3%           | 20.5%           | 22.5%            | 20.9%            | ↑                         | ↓                          |
| High Peak & N Dales           | 16.5%           | 20.8%           | 20.0%           | 15.7%            | 15.4%            | ↓                         | ↓                          |
| Chesterfield                  | 13.0%           | 12.7%           | 19.1%           | 19.2%            | 18.9%            | ↓                         | ↓                          |
| NE Derbyshire & Bolsover      | 24.2%           | 26.3%           | 29.3%           | 28.6%            | 29.7%            | ↑                         | ↑                          |
| Amber Valley                  | 36.1%           | 27.2%           | 34.7%           | 32.9%            | 35.1%            | ↑                         | ↑                          |
| Erewash                       | 36.4%           | 36.8%           | 45.2%           | 41.8%            | 42.7%            | ↓                         | ↑                          |
| S Derbyshire & S Dales        | 35.2%           | 32.2%           | 27.7%           | 32.3%            | 34.4%            | ↑                         | ↑                          |
| <b>Derbyshire</b>             | <b>25.9%</b>    | <b>25.5%</b>    | <b>29.1%</b>    | <b>28.3%</b>     | <b>28.8%</b>     | <b>↓</b>                  | <b>↑</b>                   |
| <b>Stat Neighbour Average</b> | <b>23.0%</b>    | <b>20.6%</b>    |                 |                  |                  |                           |                            |
| <b>England</b>                | <b>34.0%</b>    | <b>34.4%</b>    |                 |                  |                  |                           |                            |

It should be noted that the percentage of children in care who were placed in agency placements at the end of September 2014 (23.6%) was lower than the percentage placed outside the LA boundary (28.8%). This indicates that Derbyshire has been able to recruit foster carers who live outside the LA boundary.

#### Disabled Children

During Derbyshire's recent OFSTED inspection of services for children in need of help and protection, looked after and care leavers, inspectors made verbal comments with regard to the apparently low numbers of disabled children known to be vulnerable.

Disabled Children are presented as a separate 'district' throughout this report but these figures refer only to children with a sufficiently high level of disability to be allocated to one of the specialist disabled children's teams. Further development of reporting specifically around disabled children is required but some initial information is shown below. This information identifies disabled children as those who meet one of more of the following criteria:

- The child is allocated to one of the specialist disabled children's teams
- The child has a disability service user group open on their Frameworki record
- The child has a disability condition recorded on their Frameworki record
- The child has a 'need' relating to disability recorded on their Tribal record

Breakdowns are provided by district and show the district relevant to the workers the children are allocated to.

The number of children in need with disabilities had been decreasing, falling by 8.4% between 31<sup>st</sup> March 2011 and 31<sup>st</sup> March 2014. However, numbers at the end of September 2014 were a 1.8% increase compared with the end of March 2014.

#### Numbers of Children in Need with disabilities recorded

| District                 | 2011/12 Outcome | 2012/13 Outcome | 2013/14 Outcome | Aug 2014 Outcome | Sep 2014 Outcome | Trend 2013/14 to Sep 2014 | Trend Aug 2014 to Sep 2014 |
|--------------------------|-----------------|-----------------|-----------------|------------------|------------------|---------------------------|----------------------------|
| Disabled Children        | 557             | 524             | 525             | 549              | 575              | ↑                         | ↑                          |
| High Peak & N Dales      | 42              | 35              | 37              | 31               | 31               | ↓                         | ↔                          |
| Chesterfield             | 54              | 51              | 45              | 38               | 34               | ↓                         | ↓                          |
| NE Derbyshire & Bolsover | 58              | 46              | 54              | 47               | 50               | ↓                         | ↑                          |
| Amber Valley             | 61              | 50              | 45              | 35               | 38               | ↓                         | ↑                          |
| Erewash                  | 22              | 37              | 29              | 24               | 25               | ↓                         | ↑                          |
| S Derbyshire & S Dales   | 39              | 33              | 28              | 24               | 24               | ↓                         | ↔                          |
| <b>Derbyshire</b>        | <b>833</b>      | <b>776</b>      | <b>763</b>      | <b>748</b>       | <b>777</b>       | <b>↑</b>                  | <b>↑</b>                   |

Numbers of children in care with disabilities have seen a decrease of 12.7% between 31<sup>st</sup> March 2011 and 31<sup>st</sup> March 2013. Numbers as at the end of March 2014 represented a further decrease of 5.5% from 31<sup>st</sup> March 2013. However, at the end of September 2014 numbers showed an increase of 1.5% when compared with the end of March 2014.

#### Numbers of Children in Care with disabilities recorded

| District                 | 2011/12 Outcome | 2012/13 Outcome | 2013/14 Outcome | Aug 2014 Outcome | Sep 2014 Outcome | Trend 2013/14 to Sep 2014 | Trend Aug 2014 to Sep 2014 |
|--------------------------|-----------------|-----------------|-----------------|------------------|------------------|---------------------------|----------------------------|
| Disabled Children        | 36              | 32              | 39              | 41               | 43               | ↑                         | ↑                          |
| High Peak & N Dales      | 13              | 14              | 14              | 13               | 13               | ↓                         | ↔                          |
| Chesterfield             | 29              | 25              | 18              | 17               | 17               | ↓                         | ↔                          |
| NE Derbyshire & Bolsover | 29              | 29              | 23              | 25               | 25               | ↑                         | ↔                          |
| Amber Valley             | 29              | 20              | 17              | 17               | 16               | ↓                         | ↓                          |
| Erewash                  | 23              | 19              | 18              | 17               | 17               | ↓                         | ↔                          |
| S Derbyshire & S Dales   | 6               | 5               | 7               | 7                | 7                | ↔                         | ↔                          |
| <b>Derbyshire</b>        | <b>165</b>      | <b>144</b>      | <b>136</b>      | <b>137</b>       | <b>138</b>       | <b>↑</b>                  | <b>↑</b>                   |

Numbers subject to a child protection plan who have disabilities recorded are smaller and saw an increase between 31<sup>st</sup> March 2011 and 31<sup>st</sup> March 2013 (rising from 42 to 60). Numbers reduced between 31<sup>st</sup> March 2013 and the end of March 2014 (falling from 60 to 48) and have fallen further, with 34 children subject to a child protection plan at the end of September 2014 who have disabilities recorded.

#### Numbers of children subject to a Child Protection Plan with disabilities recorded

| District                 | 2011/12 Outcome | 2012/13 Outcome | 2013/14 Outcome | Aug 2014 Outcome | Sep 2014 Outcome | Trend 2013/14 to Sep 2014 | Trend Aug 2014 to Sep 2014 |
|--------------------------|-----------------|-----------------|-----------------|------------------|------------------|---------------------------|----------------------------|
| Disabled Children        | 4               | 10              | 11              | 4                | 4                | ↓                         | ↔                          |
| High Peak & N Dales      | 3               | 10              | 2               | 2                | 2                | ↔                         | ↔                          |
| Chesterfield             | 6               | 6               | 4               | 3                | 4                | ↔                         | ↑                          |
| NE Derbyshire & Bolsover | 8               | 13              | 11              | 8                | 8                | ↓                         | ↔                          |
| Amber Valley             | 12              | 8               | 5               | 6                | 5                | ↔                         | ↓                          |
| Erewash                  | 4               | 6               | 8               | 7                | 6                | ↓                         | ↓                          |
| S Derbyshire & S Dales   | 5               | 7               | 7               | 5                | 5                | ↓                         | ↔                          |
| <b>Derbyshire</b>        | <b>42</b>       | <b>60</b>       | <b>48</b>       | <b>35</b>        | <b>34</b>        | <b>↓</b>                  | <b>↓</b>                   |

### **SEN Children in Residential Schools**

The number of children with a statement of special educational needs who are attending agency residential schools has been reducing. At the end of both 2011/12 and 2012/13 there were 17 children with a statement of SEN in an agency residential school. This had reduced to 10 children at the end of 2013/14 and the latest available information shows that there were 9 such children.

#### **Numbers of children with a statement of SEN in agency residential schools**

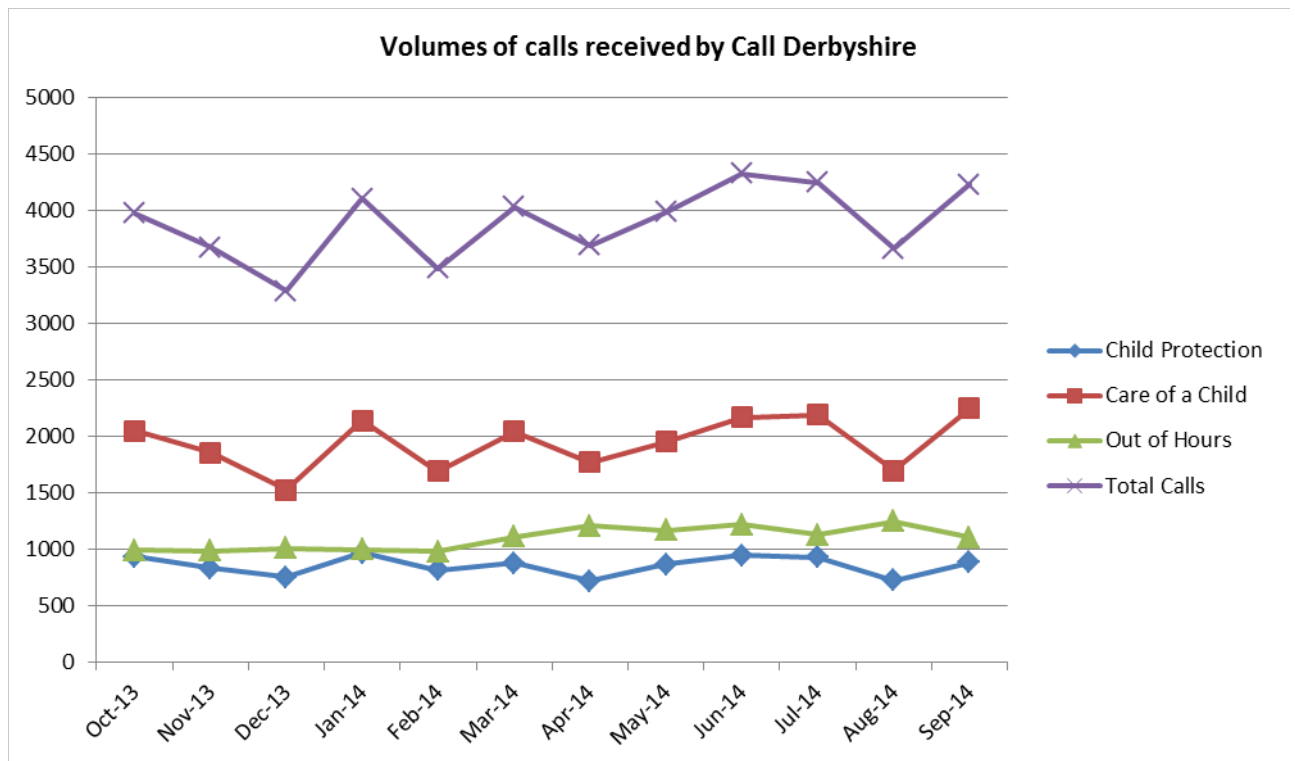
| As at Date               | Residence Type      | In Derbyshire | Outside Derbyshire | Total     |
|--------------------------|---------------------|---------------|--------------------|-----------|
| End 2011/12              | Weekly Boarder      | 2             | 7                  | 9         |
|                          | Fortnightly Boarder | 0             | 1                  | 1         |
|                          | Termly Boarder      | 0             | 0                  | 0         |
|                          | Full Time           | 1             | 6                  | 7         |
| <b>End 2011/12 Total</b> |                     | <b>3</b>      | <b>14</b>          | <b>17</b> |
| End 2012/13              | Weekly Boarder      | 1             | 10                 | 11        |
|                          | Fortnightly Boarder | 0             | 1                  | 1         |
|                          | Termly Boarder      | 0             | 0                  | 0         |
|                          | Full Time           | 1             | 4                  | 5         |
| <b>End 2012/13 Total</b> |                     | <b>2</b>      | <b>15</b>          | <b>17</b> |
| End 2013/14              | Weekly Boarder      | 0             | 5                  | 5         |
|                          | Fortnightly Boarder | 0             | 1                  | 1         |
|                          | Termly Boarder      | 0             | 1                  | 1         |
|                          | Full Time           | 1             | 2                  | 3         |
| <b>End 2013/14 Total</b> |                     | <b>1</b>      | <b>9</b>           | <b>10</b> |
| 07/10/14                 | Weekly Boarder      | 0             | 6                  | 6         |
|                          | Fortnightly Boarder | 0             | 0                  | 0         |
|                          | Termly Boarder      | 0             | 1                  | 1         |
|                          | Full Time           | 1             | 1                  | 2         |
| <b>07/10/14 Total</b>    |                     | <b>1</b>      | <b>8</b>           | <b>9</b>  |

### **Information & Analysis – Call Derbyshire**

#### **Call Volumes:**

Three categories of calls potentially relating to child protection are recorded by Call Derbyshire:

- ‘Child Protection’ calls are those where the caller selects the ‘urgent child protection’ telephony option
- ‘Care of a Child’ calls are those where the caller does not select the ‘urgent child protection’ telephony option but goes on to select the ‘call relates to the care of a child’ option
- ‘Out of Hours’ calls are those received through the emergency out of hours number (01246 532600). This number is operational 24 hours a day. Whilst some callers use this during the day, the bulk of calls to this number are after 5pm and before 9am on weekdays or on weekends or bank holidays



The volume of calls made/offered where the caller has selected the 'urgent child protection' option has shown variability over the 12 months to the end of September 2014, with a low of 709 during April 2014 and a high of 969 for January 2014. The trend for numbers of child protection calls has remained stable over the period.

Volumes of calls relating to the 'care of a child' show a slight increasing trend over the 12 months ending September 2014 with monthly numbers ranging from 1526 calls in December 2013 and a peak of 2191 in July 2014.

The number of calls to the 'out of hours' has ranged from a high of 1244 during August 2014 to 978 calls during February 2014, with a slight trend for increased numbers over the 12 months ending September 2014.

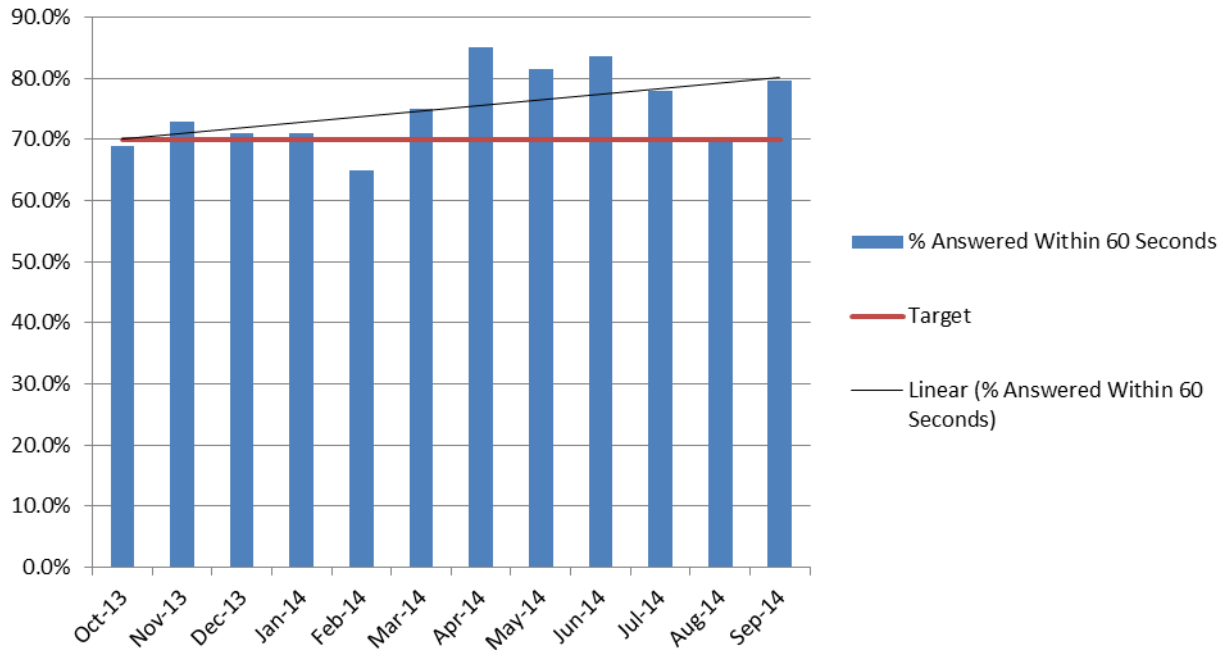
The total volume of calls received shows a clear dip in December 2013. Call Derbyshire state that this is a seasonal pattern they experience with call volumes (a similar dip was seen for December 2012). The total volume of calls reached a high in June 2014 (4330) and an overall upward trend in the total number of calls received has been seen over the 12 months ending September 2014.

#### **Call Answer Times:**

Call Derbyshire currently have a target in place to answer 70% of child protection calls within 60 seconds. Available information shows that the percentage of child protection calls answered within 60 seconds fell below the target in October 13 (69%), February 2014 (65%) and August 2014 (69.9%). Monthly figures for the 12 month period ending September 2014 show that there is a slight upward trend in monthly outcomes against this target.



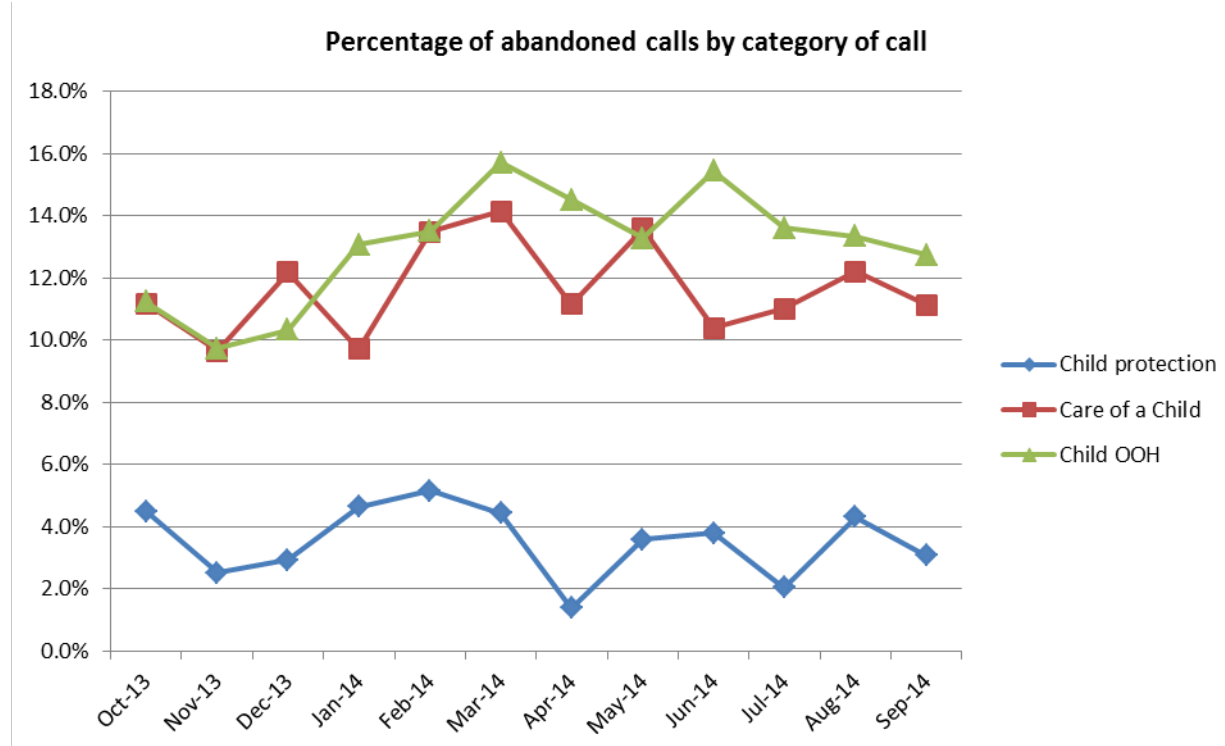
**The percentage of child protection call answered within 60 seconds**



Feedback from Call Derbyshire indicates that the dip in performance for February was a result of a combination of higher levels of staff sickness than usual and also maximum levels of leave due to the half term holiday. The increase seen for April and May is due to a new group of staff being trained to take the CP overflow calls.

#### **Abandoned Calls:**

Urgent child protection calls are given a clear priority within the call centre and the information relating to abandoned calls and the time taken to answer calls reflects this.



For urgent child protection calls, the percentage of abandoned calls over the 12 months ending September 2014 ranges from a low of 1.4% (10 calls) during April 2014 to 5.2% (42 calls) during February 2014, but a decreasing trend in the percentage of abandoned child protection calls has been seen over the period.

There appears to be a correlation between call waiting times (as reported above) and the percentage of calls that are abandoned. April 2014 had the lowest percentage of urgent child protection calls abandoned (1.4% - 10 calls) with the highest percentage of calls answered within 60 seconds (85.0%) and February 2014 had the highest percentage of calls abandoned (5.2% - 42 calls) with the lowest percentage of calls answered within 60 seconds (65.0%).

The percentage of abandoned calls is higher for calls relating to the care of a child, with a peak of 14.1% (289 calls) during March 2014, and for 'out of hours' calls, with a peak of 15.7% (174 calls) also in March 2014. Over the 12 months ending September 2014 trends show a small increase in the percentage of calls relating to the care of a child that are abandoned and an increase in the percentage of 'out of hours' calls that are abandoned.

## **Information & Analysis – Contacts & Referrals**

### **Initial Contacts:**

The number of Initial Contacts recorded for children and young people has remained relatively stable, with the number of Initial Contacts received during 2013/14 (23800) representing a small increase when compared with the number during 2012/13 (22993).

There has been a very small 0.1% decrease when comparing the number of Initial Contacts recorded during the 12 months ending September 2014 (23776) with numbers during 2013/14 (23800).

### **Initial Contacts per 10k population aged under 18**

| District   | 2011/12 Outcome | 2012/13 Outcome | 2013/14 Outcome | Aug 2014 Outcome | Sep 2014 Outcome | Trend 2013/14 to Sep 2014 | Trend Aug 2014 to Sep 2014 |
|--|-----------------|-----------------|-----------------|------------------|------------------|---------------------------|----------------------------|
| Disabled Children                                  | 764             | 847             | 773             | 578              | 562              | ↓                         |                            |
| High Peak & N Dales                                | 1158            | 1158            | 1219            | 1202             | 1260             | ↑                         |                            |
| Chesterfield                                       | 1838            | 1774            | 1814            | 1889             | 1863             | ↑                         |                            |
| NE Derbyshire & Bolsover                           | 1454            | 1433            | 1569            | 1554             | 1549             | ↓                         |                            |
| Amber Valley                                       | 1643            | 1546            | 1699            | 1687             | 1652             | ↓                         |                            |
| Erewash  | 2065            | 1905            | 1833            | 1743             | 1718             | ↓                         |                            |
| S Derbyshire & S Dales                             | 1375            | 1263            | 1231            | 1335             | 1340             | ↑                         |                            |
| <b>Derbyshire</b>                                  | <b>1543</b>     | <b>1476</b>     | <b>1528</b>     | <b>1529</b>      | <b>1526</b>      | <b>↓</b>                  |                            |
| <b>Actual No. Of Initial Contacts (Derbyshire)</b> | <b>24037</b>    | <b>22993</b>    | <b>23800</b>    | <b>23815</b>     | <b>23776</b>     |                           |                            |

### **Referrals:**

The number of referrals to social care received annually had been reducing year on year until 2012/13 when there was a sharp increase from 8123 referrals for 2011/12 to 11993 for 2012/13. The number of referrals received 2013/14 (12556) represented a 4.7% increase when compared with numbers received during 2012/13 and was significantly higher than numbers for 2010/11 and 2011/12.

The increase has been investigated and is a direct result of configuration changes to our arrangements in the call centre, where seconded, co-located social work staff now triage incoming

work and ensure appropriate signposting to safeguarding and other services. The impact of these arrangements has increased the proportion of contacts coming into the authority that are interpreted as direct referrals to social care services.

Available information for the 12 months ending September 2014 shows a 10.6% decrease in the number of referrals recorded when compared with 2013/14, and the number recorded for the 12 months ending September 2014 was below the number for 2012/13.

At district level the largest decreases have been seen for High Peak & North Dales (16.3%), Amber Valley (15.3%) and Erewash (12.2%). Disabled Children are the only district to have seen an increase in the number of referrals when comparing the 12 months ending September 2014 with numbers from 2013/14.

#### Referrals to Social Care per 10k population aged under 18

| District                                    | 2011/12 Outcome | 2012/13 Outcome | 2013/14 Outcome | Aug 2014 Outcome | Sep 2014 Outcome | Trend 2013/14 to Sep 2014 | Trend Aug 2014 to Sep 2014 |
|---|-----------------|-----------------|-----------------|------------------|------------------|---------------------------|----------------------------|
| Disabled Children                           | 745             | 719             | 1043            | 1171             | 1261             | ↑                         | ↑                          |
| High Peak & N Dales                         | 442             | 670             | 712             | 602              | 596              | ↓                         | ↓                          |
| Chesterfield                                | 563             | 973             | 957             | 892              | 882              | ↓                         | ↓                          |
| NE Derbyshire & Bolsover                    | 561             | 737             | 837             | 764              | 743              | ↓                         | ↓                          |
| Amber Valley                                | 660             | 847             | 869             | 767              | 736              | ↓                         | ↓                          |
| Erewash                                     | 434             | 887             | 845             | 757              | 742              | ↓                         | ↓                          |
| S Derbyshire & S Dales                      | 441             | 584             | 619             | 605              | 596              | ↓                         | ↓                          |
| <b>Derbyshire</b>                           | <b>521</b>      | <b>770</b>      | <b>806</b>      | <b>734</b>       | <b>721</b>       | <b>↓</b>                  | <b>↓</b>                   |
| <i>Actual No. Of Referrals (Derbyshire)</i> | <i>8123</i>     | <i>11993</i>    | <i>12556</i>    | <i>11440</i>     | <i>11228</i>     | <i>↓</i>                  | <i>↓</i>                   |
| <i>Stat Neighbour Avg (Per 10k)</i>         | <i>510</i>      | <i>547</i>      |                 |                  |                  |                           |                            |
| <i>England (Per 10k)</i>                    | <i>534</i>      | <i>521</i>      |                 |                  |                  |                           |                            |

#### Re-Referrals:

Available information for the 12 months ending September 2014 (30.3%) shows that the percentage of referrals to social care that are repeat referrals within 12 months has decreased when compared with the outcome for 2013/14 (31.0%) but remained higher than the England and Statistical Neighbour outcomes from 2012/13.

It should be noted that, for the 12 months ending September 2014, Disabled Children, North East Derbyshire & Bolsover, Erewash and South Derbyshire & South Dales saw an increase in their re-referral rate when compared with 2013/14. However, Disabled Children and South Derbyshire & South Dales continue to have the lowest re-referral rates at district level.

#### Percentage of Referrals to Social Care that were Re-referrals within 12 months

| District                      | 2011/12 Outcome | 2012/13 Outcome | 2013/14 Outcome | Aug 2014 Outcome | Sep 2014 Outcome | Trend 2013/14 to Sep 2014 | Trend Aug 2014 to Sep 2014 |
|-------------------------------|-----------------|-----------------|-----------------|------------------|------------------|---------------------------|----------------------------|
| Disabled Children             | 12.5%           | 19.7%           | 16.0%           | 21.4%            | 23.7%            | ↑                         | ↑                          |
| High Peak & N Dales           | 25.2%           | 27.7%           | 34.1%           | 35.1%            | 33.8%            | ↓                         | ↓                          |
| Chesterfield                  | 23.2%           | 29.2%           | 34.3%           | 32.7%            | 32.1%            | ↓                         | ↓                          |
| NE Derbyshire & Bolsover      | 26.1%           | 27.9%           | 30.1%           | 31.5%            | 31.0%            | ↑                         | ↓                          |
| Amber Valley                  | 24.5%           | 31.4%           | 32.9%           | 31.6%            | 29.6%            | ↓                         | ↓                          |
| Erewash                       | 21.5%           | 29.5%           | 32.1%           | 33.0%            | 32.4%            | ↑                         | ↓                          |
| S Derbyshire & S Dales        | 28.6%           | 25.6%           | 23.4%           | 24.6%            | 23.6%            | ↑                         | ↓                          |
| <b>Derbyshire</b>             | <b>24.6%</b>    | <b>28.4%</b>    | <b>31.0%</b>    | <b>31.2%</b>     | <b>30.3%</b>     | <b>↓</b>                  | <b>↓</b>                   |
| <i>Stat Neighbour Average</i> | <i>24.3%</i>    | <i>24.6%</i>    |                 |                  |                  |                           |                            |
| <i>England</i>                | <i>26.1%</i>    | <i>24.9%</i>    |                 |                  |                  |                           |                            |

## **Information & Analysis – Children in Need**

### **Numbers of Children in Need:**

The number of children in need in Derbyshire (those receiving services under S17 of the Children Act 1989 and excluding children in care and those subject to a CP plan) has increased by 3.1% when comparing numbers at the end of September 2014 with numbers at the end of 2013/14. The largest increases have been seen for North East Derbyshire & Bolsover (14.9%) and Disabled Children (9.5%). However, High Peak & North Dales, Chesterfield and Amber Valley all had a lower number of children in need at the end of September 2014 than at the end of 2013/14.

### **Numbers of children in need**

| District                 | 2011/12 Outcome | 2012/13 Outcome | 2013/14 Outcome | Aug 2014 Outcome | Sep 2014 Outcome | Trend 2013/14 to Sep 2014 | Trend Aug 2014 to Sep 2014 |
|--------------------------|-----------------|-----------------|-----------------|------------------|------------------|---------------------------|----------------------------|
| Disabled Children        | 557             | 524             | 525             | 549              | 575              | ↑                         | ↑                          |
| High Peak & N Dales      | 438             | 462             | 409             | 401              | 393              | ↓                         | ↓                          |
| Chesterfield             | 648             | 542             | 415             | 509              | 402              | ↓                         | ↓                          |
| NE Derbyshire & Bolsover | 756             | 550             | 552             | 490              | 634              | ↑                         | ↑                          |
| Amber Valley             | 677             | 422             | 502             | 436              | 471              | ↓                         | ↑                          |
| Erewash                  | 388             | 507             | 403             | 329              | 416              | ↑                         | ↑                          |
| S Derbyshire & S Dales   | 382             | 458             | 404             | 304              | 419              | ↑                         | ↑                          |
| <b>Derbyshire</b>        | <b>3846</b>     | <b>3465</b>     | <b>3210</b>     | <b>3018</b>      | <b>3310</b>      | <b>↑</b>                  | <b>↑</b>                   |

## **Information & Analysis – Children in Care**

### **Numbers of Children in Care:**

Numbers of children in care have been decreasing and the overall number in care at the end of 2013/14 (628) was a 5.4% decrease compared with the end of 2012/13 (664). However an increase has been seen, with numbers at the end of September 2014 (639) representing a 1.8% rise when compared with the end of 2013/14.

At district level, High Peak & North Dales, North East Derbyshire & Bolsover and South Derbyshire & South Dales were the only districts to see a decrease in numbers in care when comparing numbers at the end of September 2014 with those at the end of 2013/14.

It is worth noting that Derbyshire's rate of children in care per 10k population aged under 18 remains significantly below the statistical neighbour average and England rate. Derbyshire would have approximately 940 children in care if our rate per 10k matched that seen for England in 2012/13 and approximately 975 to match the average for our statistical neighbour group.

### Numbers of children in care

| District                      | 2011/12 Outcome | 2012/13 Outcome | 2013/14 Outcome | Aug 2014 Outcome | Sep 2014 Outcome | Trend 2013/14 to Sep 2014 | Trend Aug 2014 to Sep 2014 |
|-------------------------------|-----------------|-----------------|-----------------|------------------|------------------|---------------------------|----------------------------|
| Disabled Children             | 36              | 32              | 39              | 41               | 43               | ↑                         | ↑                          |
| High Peak & N Dales           | 103             | 103             | 95              | 89               | 91               | ↓                         | ↑                          |
| Chesterfield                  | 113             | 121             | 115             | 121              | 122              | ↑                         | ↑                          |
| NE Derbyshire & Bolsover      | 154             | 134             | 116             | 112              | 111              | ↓                         | ↓                          |
| Amber Valley                  | 92              | 82              | 72              | 78               | 77               | ↑                         | ↓                          |
| Erewash                       | 145             | 133             | 126             | 131              | 131              | ↑                         | ↔                          |
| S Derbyshire & S Dales        | 57              | 59              | 65              | 65               | 64               | ↓                         | ↓                          |
| <b>Derbyshire</b>             | <b>700</b>      | <b>664</b>      | <b>628</b>      | <b>637</b>       | <b>639</b>       | <b>↑</b>                  | <b>↑</b>                   |
| <b>Stat Neighbour Average</b> | <b>854</b>      | <b>902</b>      |                 |                  |                  |                           |                            |
| <b>England</b>                | <b>67080</b>    | <b>68110</b>    |                 |                  |                  |                           |                            |

### Numbers of children in care per 10k population aged under 18

| District                      | 2011/12 Outcome | 2012/13 Outcome | 2013/14 Outcome | Aug 2014 Outcome | Sep 2014 Outcome | Trend 2013/14 to Sep 2014 | Trend Aug 2014 to Sep 2014 |
|-------------------------------|-----------------|-----------------|-----------------|------------------|------------------|---------------------------|----------------------------|
| Disabled Children             | 115             | 102             | 125             | 132              | 138              | ↑                         | ↑                          |
| High Peak & N Dales           | 37              | 37              | 34              | 32               | 33               | ↓                         | ↑                          |
| Chesterfield                  | 55              | 59              | 57              | 60               | 60               | ↑                         | ↔                          |
| NE Derbyshire & Bolsover      | 43              | 40              | 34              | 33               | 33               | ↓                         | ↔                          |
| Amber Valley                  | 38              | 34              | 30              | 33               | 32               | ↑                         | ↓                          |
| Erewash                       | 64              | 59              | 56              | 58               | 58               | ↑                         | ↔                          |
| S Derbyshire & S Dales        | 23              | 24              | 26              | 26               | 26               | ↔                         | ↔                          |
| <b>Derbyshire</b>             | <b>45</b>       | <b>42</b>       | <b>40</b>       | <b>41</b>        | <b>41</b>        | <b>↑</b>                  | <b>↔</b>                   |
| <b>Stat Neighbour Average</b> | <b>59</b>       | <b>63</b>       |                 |                  |                  |                           |                            |
| <b>England</b>                | <b>59</b>       | <b>60</b>       |                 |                  |                  |                           |                            |

The introduction of multi-agency 'Edge of Care Resource Panels' to better gate-keep admissions to the care system and the introduction of systemic practice training across all districts is intended to reduce the overall number of children in care. A reduction in numbers to approximately 600 by the end of March 2015 has been targeted.

### Placement Types:

At the end of September 2014 55.1% of Derbyshire's children in care were placed in a foster placement provided by the local authority and this percentage was an increase compared with the end of 2013/14 (51.8%). There has been a corresponding decrease in the percentage placed in IFA placements. However, the reverse has been seen for residential placements, with an increase in the percentage in agency residential placements and a decrease in the percentage in an in-house residential placement.

### Percentage breakdown of children in care by placement type

| Placement Type                 | 31 <sup>st</sup> Mar 2012 | 31 <sup>st</sup> Mar 2013 | 31 <sup>st</sup> Mar 2014 | 31 <sup>st</sup> Aug 2014 | 30 <sup>th</sup> Sep 2014 | Trend 2013/14 to Sep 2014 | Trend Aug 2014 to Sep 2014 |
|--------------------------------|---------------------------|---------------------------|---------------------------|---------------------------|---------------------------|---------------------------|----------------------------|
| Foster Placement (Agency)      | 13.0%                     | 14.5%                     | 19.3%                     | 17.0%                     | 17.5%                     | ↓                         | ↑                          |
| Foster Placement (DCC)         | 59.7%                     | 58.1%                     | 51.8%                     | 54.0%                     | 55.1%                     | ↑                         | ↑                          |
| Placed For Adoption            | 6.7%                      | 7.8%                      | 9.4%                      | 9.6%                      | 8.8%                      | ↓                         | ↓                          |
| Residential Placement (Agency) | 6.0%                      | 5.7%                      | 5.1%                      | 6.1%                      | 6.1%                      | ↑                         | ↔                          |
| Residential Placement (DCC)    | 7.0%                      | 7.4%                      | 8.1%                      | 7.2%                      | 6.7%                      | ↓                         | ↓                          |
| Placed With Parents            | 2.0%                      | 1.5%                      | 1.6%                      | 1.7%                      | 1.9%                      | ↑                         | ↑                          |
| Independent Living             | 5.6%                      | 4.7%                      | 4.8%                      | 4.1%                      | 3.8%                      | ↓                         | ↓                          |
| Other                          | 0.0%                      | 0.3%                      | 0.0%                      | 0.3%                      | 0.2%                      | ↑                         | ↓                          |

## Admissions & Discharges:

The number of children being admitted to care had been decreasing, with a 9.2% decrease in the number of admissions when comparing 2010/11 and 2012/13 figures and a further decrease of 5.4% for 2013/14. However, figures for the 12 months ending September 2014 show a 4.9% increase compared with 2013/14, but, at district level, High Peak & North Dales (-19.4%), South Derbyshire & South Dales (-10.9%) and North East Derbyshire & Bolsover (-4.5%) all saw a decrease in admissions.

### Numbers of children admitted to care

| District                 | 2011/12 Outcome | 2012/13 Outcome | 2013/14 Outcome | Aug 2014 Outcome | Sep 2014 Outcome | Trend 2013/14 to Sep 2014 | Trend Aug 2014 to Sep 2014 |
|--------------------------|-----------------|-----------------|-----------------|------------------|------------------|---------------------------|----------------------------|
| Disabled Children        | 6               | 16              | 12              | 11               | 14               | ↑                         | ↑                          |
| High Peak & N Dales      | 62              | 36              | 31              | 27               | 25               | ↓                         | ↓                          |
| Chesterfield             | 48              | 58              | 48              | 53               | 50               | ↑                         | ↓                          |
| NE Derbyshire & Bolsover | 51              | 47              | 44              | 43               | 42               | ↓                         | ↓                          |
| Amber Valley             | 35              | 37              | 30              | 34               | 35               | ↑                         | ↑                          |
| Erewash                  | 55              | 54              | 56              | 76               | 73               | ↑                         | ↓                          |
| S Derbyshire & S Dales   | 31              | 30              | 46              | 40               | 41               | ↓                         | ↑                          |
| <b>Derbyshire</b>        | <b>288</b>      | <b>278</b>      | <b>267</b>      | <b>284</b>       | <b>280</b>       | <b>↑</b>                  | <b>↓</b>                   |

The reasons why children are admitted to care can be as many and varied as the children themselves and the circumstances for each individual child are unique. However, interrogation of the reasons (as recorded in the Care Plan for each child) for children admitted during 2013/14 and during 2014/15 up to the end of September 2014 has shown that the top 5 most commonly recorded issues were:

| Top 5 Issues – 2013/14                                |                     | Top 5 Issues – 2014/15 (to end of September 2014)     |                     |
|---|---------------------|---|---------------------|
| Issue   | % Of Cases Noted In | Issue   | % Of Cases Noted In |
| Neglect   | 31.5%               | Neglect   | 22.3%               |
| Substance misuse (including alcohol abuse) by parents | 20.2%               | Substance misuse (including alcohol abuse) by parents | 20.1%               |
| Physical abuse  | 19.5%               | Physical abuse  | 18.0%               |
| Emotional abuse                                       | 14.0%               | Domestic Violence                                     | 15.8%               |
| Mental health of parents/carers                       | 9.7%                | Unmanageable behaviour                                | 12.2%               |

*(Note that more than one issue may be present in each individual case)*

The percentage of children admitted to care who have previously been in care (re-admissions) has increased for the 12 months ending September 2014 when compared with 2013/14.

Chesterfield and Amber Valley are the only districts to have seen a decreased re-admission rate when comparing outcomes for the 12 months ending September 2014 with those from 2013/14.

### Percentage of re-admissions to care

| District                 | 2011/12 Outcome | 2012/13 Outcome | 2013/14 Outcome | Aug 2014 Outcome | Sep 2014 Outcome | Trend 2013/14 to Sep 2014 | Trend Aug 2014 to Sep 2014 |
|--------------------------|-----------------|-----------------|-----------------|------------------|------------------|---------------------------|----------------------------|
| Disabled Children        | 0.0%            | 6.7%            | 0.0%            | 0.0%             | 0.0%             | ↔                         | ↔                          |
| High Peak & N Dales      | 13.6%           | 16.7%           | 13.3%           | 29.6%            | 32.0%            | ↑                         | ↑                          |
| Chesterfield             | 23.3%           | 15.9%           | 8.9%            | 7.5%             | 8.0%             | ↓                         | ↑                          |
| NE Derbyshire & Bolsover | 12.2%           | 13.6%           | 20.5%           | 20.9%            | 23.8%            | ↑                         | ↑                          |
| Amber Valley             | 19.4%           | 11.1%           | 13.3%           | 8.8%             | 5.7%             | ↓                         | ↓                          |
| Erewash                  | 14.5%           | 21.8%           | 16.1%           | 23.7%            | 20.5%            | ↑                         | ↓                          |
| S Derbyshire & S Dales   | 10.0%           | 3.2%            | 4.4%            | 7.5%             | 7.3%             | ↑                         | ↓                          |
| <b>Derbyshire</b>        | <b>15.6%</b>    | <b>14.3%</b>    | <b>12.2%</b>    | <b>15.8%</b>     | <b>15.0%</b>     | <b>↑</b>                  | <b>↓</b>                   |

The number of children being discharged from care had been increasing, with a 13.5% increase in the number of discharges was seen when comparing 2010/11 and 2012/13 figures. However, figures for 2013/14 show a 3.5% decrease when compared with 2012/13. Current figures, for the 12 months ending September 2014, show a further decrease of 11.6% when compared with 2013/14.

#### Numbers of discharges from care

| District                 | 2011/12 Outcome | 2012/13 Outcome | 2013/14 Outcome | Aug 2014 Outcome | Sep 2014 Outcome | Trend 2013/14 to Sep 2014 | Trend Aug 2014 to Sep 2014 |
|--------------------------|-----------------|-----------------|-----------------|------------------|------------------|---------------------------|----------------------------|
| Disabled Children        | 2               | 11              | 5               | 4                | 5                | ↔                         | ↑                          |
| High Peak & N Dales      | 52              | 31              | 37              | 35               | 35               | ↓                         | ↔                          |
| Chesterfield             | 48              | 80              | 65              | 53               | 50               | ↓                         | ↓                          |
| NE Derbyshire & Bolsover | 43              | 42              | 59              | 51               | 53               | ↓                         | ↑                          |
| Amber Valley             | 39              | 62              | 38              | 31               | 32               | ↓                         | ↑                          |
| Erewash                  | 40              | 62              | 57              | 55               | 54               | ↓                         | ↓                          |
| S Derbyshire & S Dales   | 26              | 24              | 42              | 44               | 39               | ↓                         | ↓                          |
| <b>Derbyshire</b>        | <b>250</b>      | <b>312</b>      | <b>303</b>      | <b>273</b>       | <b>268</b>       | ↓                         | ↓                          |

#### Visits to Children in Care:

As with child protection visits, statutory visits to children in care have been a major priority for the service.

The percentage of children in care where all of their visits during the 12 months ending September 2014 were carried out within timescales (51.8%) shows a decrease when compared with outcomes from 2013/14 (56.3%).

At district level, High Peak & North Dales was the only districts to see an improvement in performance for the 12 months ending September 2014 when compared with 2013/14.

#### Children in care visits – Percentage of cases where all visits were completed within timescale

| District                 | 2011/12 Outcome | 2012/13 Outcome | 2013/14 Outcome | Aug 2014 Outcome | Sep 2014 Outcome | Trend 2013/14 to Sep 2014 | Trend Aug 2014 to Sep 2014 |
|--------------------------|-----------------|-----------------|-----------------|------------------|------------------|---------------------------|----------------------------|
| Disabled Children        | 34.3%           | 69.8%           | 87.5%           | 89.4%            | 84.3%            | ↓                         | ↓                          |
| High Peak & N Dales      | 36.4%           | 44.0%           | 57.0%           | 57.9%            | 59.1%            | ↑                         | ↑                          |
| Chesterfield             | 16.8%           | 28.9%           | 48.8%           | 41.9%            | 44.7%            | ↓                         | ↑                          |
| NE Derbyshire & Bolsover | 17.4%           | 52.0%           | 74.9%           | 70.1%            | 65.7%            | ↓                         | ↓                          |
| Amber Valley             | 27.3%           | 42.9%           | 45.0%           | 29.9%            | 35.2%            | ↓                         | ↑                          |
| Erewash                  | 15.6%           | 35.9%           | 54.2%           | 52.3%            | 53.4%            | ↓                         | ↑                          |
| S Derbyshire & S Dales   | 24.4%           | 36.6%           | 36.2%           | 35.8%            | 29.8%            | ↓                         | ↓                          |
| <b>Derbyshire</b>        | <b>22.2%</b>    | <b>41.0%</b>    | <b>56.3%</b>    | <b>51.8%</b>     | <b>51.8%</b>     | ↓                         | ↔                          |

Current performance measuring the percentage of total visits made during the 12 months ending September 2014 shows that 92.8% of all visits made were within timescales. This is a 0.6 percentage point decrease when compared with outcomes for 2013/14 (93.4%).

### Children in care visits – Percentage of visits completed within timescale

| District                 | 2011/12 Outcome | 2012/13 Outcome | 2013/14 Outcome | Aug 2014 Outcome | Sep 2014 Outcome | Trend 2013/14 to Sep 2014 | Trend Aug 2014 to Sep 2014 |
|--------------------------|-----------------|-----------------|-----------------|------------------|------------------|---------------------------|----------------------------|
| Disabled Children        | 72.8%           | 96.9%           | 98.4%           | 98.6%            | 98.0%            | ↓                         | ↓                          |
| High Peak & N Dales      | 85.9%           | 89.1%           | 93.9%           | 95.4%            | 95.3%            | ↑                         | ↓                          |
| Chesterfield             | 74.5%           | 82.8%           | 91.2%           | 90.4%            | 89.8%            | ↓                         | ↓                          |
| NE Derbyshire & Bolsover | 81.5%           | 87.6%           | 96.8%           | 96.8%            | 96.5%            | ↓                         | ↓                          |
| Amber Valley             | 85.0%           | 78.9%           | 94.2%           | 91.3%            | 90.8%            | ↓                         | ↓                          |
| Erewash                  | 79.9%           | 81.3%           | 93.2%           | 93.6%            | 93.8%            | ↑                         | ↑                          |
| S Derbyshire & S Dales   | 78.7%           | 89.3%           | 85.1%           | 84.3%            | 84.2%            | ↓                         | ↓                          |
| <b>Derbyshire</b>        | <b>80.8%</b>    | <b>85.1%</b>    | <b>93.4%</b>    | <b>93.1%</b>     | <b>92.8%</b>     | <b>↓</b>                  | <b>↓</b>                   |

### Reviews of Children in Care:

The percentage of children in care whose cases were reviewed within timescale showed significant improvement when comparing Derbyshire's outcome for 2013/14 (86.3%) with that from 2012/13 (70.7%) but will still be below the level of performance seen for 2010/11 (96.2%) and 2011/12 (86.6%). The latest figures, for the 12 months ending September 2014 (85.9%), show a small decrease in performance when compared with outcomes for 2013/14.

At district level, Disabled Children, High Peak & North Dales and South Derbyshire & South Dales were the only districts to see an increase in performance when comparing outcomes for the 12 months ending September 2014 with those from 2013/14.

### Children in care reviews – Percentage of cases where all reviews were completed within timescale

| District                 | 2011/12 Outcome | 2012/13 Outcome | 2013/14 Outcome | Aug 2014 Outcome | Sep 2014 Outcome | Trend 2013/14 to Sep 2014 | Trend Aug 2014 to Sep 2014 |
|--------------------------|-----------------|-----------------|-----------------|------------------|------------------|---------------------------|----------------------------|
| Disabled Children        | 88.6%           | 80.6%           | 74.4%           | 95.0%            | 88.1%            | ↑                         | ↓                          |
| High Peak & N Dales      | 76.0%           | 59.4%           | 74.1%           | 81.6%            | 81.6%            | ↑                         | ↔                          |
| Chesterfield             | 81.1%           | 62.6%           | 88.6%           | 86.2%            | 84.0%            | ↓                         | ↓                          |
| NE Derbyshire & Bolsover | 90.5%           | 75.2%           | 81.1%           | 78.9%            | 75.9%            | ↓                         | ↓                          |
| Amber Valley             | 85.2%           | 67.1%           | 98.4%           | 90.0%            | 88.9%            | ↓                         | ↓                          |
| Erewash                  | 94.8%           | 89.2%           | 92.9%           | 88.4%            | 91.5%            | ↓                         | ↑                          |
| S Derbyshire & S Dales   | 87.0%           | 55.6%           | 91.4%           | 93.8%            | 95.3%            | ↑                         | ↑                          |
| <b>Derbyshire</b>        | <b>86.6%</b>    | <b>70.7%</b>    | <b>86.3%</b>    | <b>86.5%</b>     | <b>85.9%</b>     | <b>↓</b>                  | <b>↓</b>                   |

Information available for the 12 months ending September 2014 shows that 94.7% of children in care reviews that took place did so within timescales, a small increase from 93.1% for the 12 months ending August 2014.

### Children in care reviews – Percentage of reviews completed within timescales (12 months ending September 2014)

| District                 | No. Of CiC Reviews | No. Of CiC Reviews On Time | % Of CiC Reviews On Time |
|--------------------------|--------------------|----------------------------|--------------------------|
| Disabled Children        | 104                | 100                        | 96.2%                    |
| High Peak & N Dales      | 261                | 246                        | 94.3%                    |
| Chesterfield             | 303                | 285                        | 94.1%                    |
| NE Derbyshire & Bolsover | 314                | 288                        | 91.7%                    |
| Amber Valley             | 211                | 201                        | 95.3%                    |
| Erewash                  | 359                | 347                        | 96.7%                    |
| S Derbyshire & S Dales   | 179                | 172                        | 96.1%                    |
| <b>Derbyshire</b>        | <b>1731</b>        | <b>1639</b>                | <b>94.7%</b>             |



## Health Outcomes for Children in Care:

The percentage of children in care aged 5 and under (in care for 12 months or more) who had up-to-date Health Surveillance/Promotion checks decreased significantly from 92.9% at 31<sup>st</sup> March 2013 to 80.5% at 31<sup>st</sup> March 2014, with a further decrease to 56.6% at the end of September 2014. This is a continuation of a decreasing trend seen over the period from 2010/11.

At district level, all districts have seen a decrease in performance when comparing outcomes at the end of September 2014 with those for 2013/14. High Peak & North Dales, Chesterfield and Amber Valley have seen improvements in performance when comparing outcome at the end of September 2014 with those reported for the end of August 2014. South Derbyshire & South Dales continue to be the highest performing district for this indicator.

### Percentage of Children in Care aged 5 and under who had up-to-date Health Surveillance/Promotion checks

| District                      | 2011/12 Outcome | 2012/13 Outcome | 2013/14 Outcome | Aug 2014 Outcome | Sep 2014 Outcome | Trend 2013/14 to Sep 2014 | Trend Aug 2014 to Sep 2014 |
|-------------------------------|-----------------|-----------------|-----------------|------------------|------------------|---------------------------|----------------------------|
| Disabled Children             | 100.0%          | 100.0%          | 80.0%           | 75.0%            | 75.0%            | ↓                         | ↔                          |
| High Peak & N Dales           | 100.0%          | 100.0%          | 81.8%           | 60.0%            | 75.0%            | ↓                         | ↑                          |
| Chesterfield                  | 100.0%          | 92.9%           | 78.6%           | 42.9%            | 50.0%            | ↓                         | ↑                          |
| NE Derbyshire & Bolsover      | 89.2%           | 88.9%           | 94.4%           | 77.8%            | 41.2%            | ↓                         | ↓                          |
| Amber Valley                  | 100.0%          | 100.0%          | 80.0%           | 57.1%            | 66.7%            | ↓                         | ↑                          |
| Erewash                       | 95.2%           | 90.9%           | 50.0%           | 35.7%            | 33.3%            | ↓                         | ↓                          |
| S Derbyshire & S Dales        | 100.0%          | 100.0%          | 100.0%          | 92.9%            | 76.9%            | ↓                         | ↓                          |
| <b>Derbyshire</b>             | <b>95.5%</b>    | <b>92.9%</b>    | <b>80.5%</b>    | <b>63.0%</b>     | <b>56.6%</b>     | <b>↓</b>                  | <b>↓</b>                   |
| <b>Stat Neighbour Average</b> | <b>96.5%</b>    | <b>91.7%</b>    |                 |                  |                  |                           |                            |
| <b>England</b>                | <b>80.2%</b>    | <b>84.3%</b>    |                 |                  |                  |                           |                            |

*(Measures the percentage of children aged 5 and under who had been in care for 12 months or more that had a health surveillance/promotion check recorded in the last 6 months)*

The percentage of children in care (in care for 12 months or more) who had up-to-date Health Assessments has increased from 76.5% at 31<sup>st</sup> March 2013 to 91.2% at 31<sup>st</sup> March 2014. This was above performance seen for 2010/11, 2011/12 and 2012/13 and was also higher than outcomes seen England overall (87.3%) and the average for Derbyshire's statistical neighbours (83.8%) in 2012/13. However, performance has decreased to 81.9% at the end of September 2014.

All districts saw an improvement in performance when comparing 2013/14 outcomes with those from 2012/13. However, Amber Valley (1.5 percentage point increase) was the only district to see an increase in performance when comparing outcomes at the end of September 2014 with those from 2013/14.

### Percentage of Children in Care who had up-to-date Health Assessments

| District                      | 2011/12 Outcome | 2012/13 Outcome | 2013/14 Outcome | Aug 2014 Outcome | Sep 2014 Outcome | Trend 2013/14 to Sep 2014 | Trend Aug 2014 to Sep 2014 |
|-------------------------------|-----------------|-----------------|-----------------|------------------|------------------|---------------------------|----------------------------|
| Disabled Children             | 93.1%           | 81.0%           | 88.9%           | 75.0%            | 75.0%            | ↓                         | ↔                          |
| High Peak & N Dales           | 89.7%           | 80.0%           | 93.1%           | 86.1%            | 85.5%            | ↓                         | ↓                          |
| Chesterfield                  | 82.4%           | 71.4%           | 96.4%           | 86.9%            | 85.5%            | ↓                         | ↓                          |
| NE Derbyshire & Bolsover      | 77.6%           | 79.8%           | 95.3%           | 87.5%            | 84.6%            | ↓                         | ↓                          |
| Amber Valley                  | 83.1%           | 78.6%           | 88.9%           | 71.2%            | 90.4%            | ↑                         | ↑                          |
| Erewash                       | 80.0%           | 72.7%           | 83.1%           | 77.5%            | 70.0%            | ↓                         | ↓                          |
| S Derbyshire & S Dales        | 97.1%           | 75.7%           | 89.7%           | 93.2%            | 81.0%            | ↓                         | ↓                          |
| <b>Derbyshire</b>             | <b>83.3%</b>    | <b>76.5%</b>    | <b>91.2%</b>    | <b>83.1%</b>     | <b>81.9%</b>     | <b>↓</b>                  | <b>↓</b>                   |
| <b>Stat Neighbour Average</b> | <b>84.6%</b>    | <b>83.8%</b>    |                 |                  |                  |                           |                            |
| <b>England</b>                | <b>86.3%</b>    | <b>87.3%</b>    |                 |                  |                  |                           |                            |

(Measures the percentage of children who had been in care for 12 months or more who had their annual health assessment. For children aged under 5 an assessment should be carried out in each 6 month period to fulfil the requirement)

The percentage of children in care (in care for 12 months or more) that had their teeth checked by a dentist had been decreasing. Performance outcomes for 2012/13 (76.0%) show a significant fall from outcomes for 2011/12 (86.4%). However, figures for 2013/14 (89.2%) show significant improvement when compared with the 2012/13 position. Performance for 2013/14 was also above that seen for England overall (82.0%) and the average for our statistical neighbours (75.9%) in 2012/13.

All districts saw an improvement in performance when comparing 2013/14 outcomes with those from 2012/13 but at the end of September 2014 there had been a decrease in performance for all districts when compared with 2013/14 outcomes.

### Percentage of Children in Care who had their teeth checked by a dentist

| District                      | 2011/12 Outcome | 2012/13 Outcome | 2013/14 Outcome | Aug 2014 Outcome | Sep 2014 Outcome | Trend 2013/14 to Sep 2014 | Trend Aug 2014 to Sep 2014 |
|-------------------------------|-----------------|-----------------|-----------------|------------------|------------------|---------------------------|----------------------------|
| Disabled Children             | 93.1%           | 81.0%           | 92.6%           | 90.6%            | 84.4%            | ↓                         | ↓                          |
| High Peak & N Dales           | 100.0%          | 91.4%           | 93.1%           | 87.5%            | 89.5%            | ↓                         | ↑                          |
| Chesterfield                  | 85.1%           | 76.6%           | 80.7%           | 78.6%            | 74.7%            | ↓                         | ↓                          |
| NE Derbyshire & Bolsover      | 79.4%           | 66.7%           | 88.2%           | 83.8%            | 80.8%            | ↓                         | ↓                          |
| Amber Valley                  | 87.7%           | 69.6%           | 85.2%           | 82.7%            | 78.8%            | ↓                         | ↓                          |
| Erewash                       | 78.0%           | 77.8%           | 95.2%           | 70.0%            | 63.7%            | ↓                         | ↓                          |
| S Derbyshire & S Dales        | 100.0%          | 73.0%           | 92.3%           | 88.6%            | 83.3%            | ↓                         | ↓                          |
| <b>Derbyshire</b>             | <b>86.4%</b>    | <b>76.0%</b>    | <b>89.2%</b>    | <b>81.8%</b>     | <b>78.3%</b>     | <b>↓</b>                  | <b>↓</b>                   |
| <b>Stat Neighbour Average</b> | <b>75.7%</b>    | <b>75.9%</b>    |                 |                  |                  |                           |                            |
| <b>England</b>                | <b>82.4%</b>    | <b>82.0%</b>    |                 |                  |                  |                           |                            |

(Measures the percentage of children who had been in care for 12 months or more who had their teeth checked by a dentist during the previous 12 months. For very young children a check by a paediatrician or other healthcare professional may be counted)

Performance against these measures (and others relating to the health of children in care) is now the focus of the 'Improving Health Outcomes for Children and Young People in Care and Care Leavers' working group. Plans are being implemented to improve processes and the accuracy of health data recorded for children in care. This should result in performance gains.

## **Information & Analysis – Adoptions**

### **Numbers of Adoptions:**

The number of children who are discharged from care as a result of an adoption has been increasing. During 2012/13 75 children in care were adopted, a 92.3% increase when compared with the number adopted during 2010/11 (39) and a 9.3% increase in numbers of children adopted has been seen for 2013/14 (82) when compared with 2012/13. However, available information for the 12 months ending September 2014 shows a decrease in numbers adopted when compared with 2013/14.

### **Numbers of adoptions of children in care**

| District                 | 2011/12 Outcome | 2012/13 Outcome | 2013/14 Outcome | Aug 2014 Outcome | Sep 2014 Outcome | Trend 2013/14 to Sep 2014 | Trend Aug 2014 to Sep 2014 |
|--------------------------|-----------------|-----------------|-----------------|------------------|------------------|---------------------------|----------------------------|
| Disabled Children        | 0               | 1               | 0               | 1                | 1                | ↑                         | ↔                          |
| High Peak & N Dales      | 3               | 10              | 8               | 9                | 10               | ↑                         | ↑                          |
| Chesterfield             | 7               | 17              | 15              | 12               | 10               | ↓                         | ↓                          |
| NE Derbyshire & Bolsover | 13              | 17              | 32              | 27               | 29               | ↓                         | ↑                          |
| Amber Valley             | 11              | 10              | 7               | 7                | 9                | ↑                         | ↑                          |
| Erewash                  | 12              | 19              | 11              | 6                | 6                | ↓                         | ↔                          |
| S Derbyshire & S Dales   | 6               | 1               | 9               | 6                | 6                | ↓                         | ↔                          |
| <b>Derbyshire</b>        | <b>52</b>       | <b>75</b>       | <b>82</b>       | <b>68</b>        | <b>71</b>        | <b>↓</b>                  | <b>↑</b>                   |

It should also be noted that the number of children who were placed for adoption at the end of September 2014 (56) showed an increase from the number of children placed at 31<sup>st</sup> March 2014 (54).

### **Recruitment and Matching:**

Information from the Adoptions Service shows good progress on the recruitment of adopters and the matching of children. During 2014/15 to date (up to the end of September 2014), 29 new adoptive families have been approved and 37 children have been matched with adopters. In addition, PFA decisions have been made for 19 children.

### **Scorecard Indicators A1 and A2:**

Indicators A1 and A2 from the Adoptions Scorecard are a particular area of focus for Derbyshire.

Data submitted to DfE for the 36 months ending 31<sup>st</sup> March 2014 shows that the average length of time between a child entering care and moving in with their adoptive family (for children who were adopted in the period) was 597 days. This was an improvement from 623 days for the 36 months ending 31<sup>st</sup> March 2013 (as reported on the 2013 Adoptions Scorecard) but was outside the threshold specified by DfE for the 2011-14 period (547 days).

Information available for the 36 months ending September 2014 shows that the average length of time between a child entering care and moving in with their adoptive family has decreased to 587 days. The DfE threshold for the 2012-15 period is 487 days.

Data submitted to DfE for the 36 months ending 31<sup>st</sup> March 2014 shows that the average length of time between the local authority receiving court authority to place a child for adoption and the local authority deciding on a match to an adoptive family (for children who were adopted in the period) was 221 days. This was an increase from 191 days for the 36 months ending 31<sup>st</sup> March 2013 (as

reported on the 2013 Adoptions Scorecard) and was outside the threshold specified by DfE for the 2011-14 period (152 days).

Information available for the 36 months ending September 2014 shows that the average length of time between the local authority receiving court authority to place a child for adoption and the local authority deciding on a match to an adoptive family has increased further to 248 days. The DfE threshold for the 2012-15 period is 121 days.

## **Information & Analysis – Care Leavers**

*Information relating to care leavers for 2013/14 was submitted to DfE for young people whose 19<sup>th</sup>, 20<sup>th</sup> or 21<sup>st</sup> birthday was during the year. The information shown below for 2013/14, August 2014 and September 2014 outcomes refer only to the 19<sup>th</sup> birthday cohort in order to provide a like-for-like comparison with outcomes from previous years (that also referred only to those whose 19<sup>th</sup> birthday was during the year).*

*Processes on Frameworki for recording of care leavers' information relevant to the expanded cohort are still being developed. Data for 2014/15 20 and 21 year old cohorts is not yet available.*

The percentage of care leavers who were living in suitable accommodation has seen a small decrease from 94.8% for 2012/13 to 90.1% at the end of March 2014. Derbyshire's outcomes for this indicator have historically been better than those seen for England and the average for our statistical neighbour group of authorities. Derbyshire's outcome at the end of March 2014 was still higher than the overall England outcome and the statistical neighbour average for 2012/13.

At the end of September 2014, the percentage of care leavers in suitable accommodation had decreased by 6.2 percentage points when compared with the 2013/14 outcome.

At district level, Disabled Children and High Peak & North Dales had 100% of care leavers in suitable accommodation at the end of September 2014. North East Derbyshire & Bolsover and South Derbyshire & South Dales had the lowest percentage in suitable accommodation (75%).

### **Percentage of care leavers living in suitable accommodation**

| District                      | 2011/12 Outcome | 2012/13 Outcome | 2013/14 Outcome | Aug 2014 Outcome | Sep 2014 Outcome | Trend 2013/14 To Sep 2014 | Trend Aug 2014 to Sep 2014 |
|-------------------------------|-----------------|-----------------|-----------------|------------------|------------------|---------------------------|----------------------------|
| Disabled Children             | -               | -               | 66.7%           | 100.0%           | 100.0%           | ↑                         | ↔                          |
| High Peak & N Dales           | 100.0%          | 88.9%           | 87.5%           | 100.0%           | 100.0%           | ↑                         | ↔                          |
| Chesterfield                  | 95.5%           | 94.7%           | 92.1%           | 80.0%            | 78.9%            | ↓                         | ↓                          |
| NE Derbyshire & Bolsover      | 66.7%           | 100.0%          | 66.7%           | 75.0%            | 75.0%            | ↑                         | ↔                          |
| Amber Valley                  | 100.0%          | 90.9%           | 91.7%           | 77.8%            | 83.3%            | ↓                         | ↑                          |
| Erewash                       | 85.7%           | 100.0%          | 100.0%          | 90.0%            | 90.9%            | ↓                         | ↑                          |
| S Derbyshire & S Dales        | 100.0%          | 100.0%          | 83.3%           | 80.0%            | 75.0%            | ↓                         | ↓                          |
| <b>Derbyshire</b>             | <b>93.9%</b>    | <b>94.8%</b>    | <b>90.1%</b>    | <b>83.7%</b>     | <b>83.9%</b>     | <b>↓</b>                  | <b>↑</b>                   |
| <b>Stat Neighbour Average</b> | <b>87.5%</b>    | <b>84.0%</b>    |                 |                  |                  |                           |                            |
| <b>England</b>                | <b>88.0%</b>    | <b>88.0%</b>    |                 |                  |                  |                           |                            |

The percentage of care leavers who were engaged in employment, education or training has also seen a decrease when comparing Derbyshire's outcome at the end of March 2014 (66.7%) with outcomes the outcome for 2012/13 (74.1%). However, Derbyshire's outcome at the end of March 2014 remains higher than the 2012/13 outcomes seen for England overall and the average for our statistical neighbours.

At the end of September 2014 the percentage of care leavers who were engaged in employment education or training had decreased further from the 2013/14 position with decreases seen for North East Derbyshire & Bolsover (41.7 percentage points), Erewash (27.3 percentage points) and Chesterfield (18.4 percentage points). All other districts actually saw an increased percentage.

#### Percentage of care leavers in employment, education or training

| District                      | 2011/12 Outcome | 2012/13 Outcome | 2013/14 Outcome | Aug 2014 Outcome | Sep 2014 Outcome | Trend 2013/14 To Sep 2014 | Trend Aug 2014 To Sep 2014 |
|-------------------------------|-----------------|-----------------|-----------------|------------------|------------------|---------------------------|----------------------------|
| Disabled Children             | -               | -               | 66.7%           | 100.0%           | 100.0%           | ↑                         | ↔                          |
| High Peak & N Dales           | 87.5%           | 88.9%           | 62.5%           | 100.0%           | 100.0%           | ↑                         | ↔                          |
| Chesterfield                  | 86.4%           | 68.4%           | 76.3%           | 53.3%            | 57.9%            | ↓                         | ↑                          |
| NE Derbyshire & Bolsover      | 33.3%           | 80.0%           | 66.7%           | 25.0%            | 25.0%            | ↓                         | ↔                          |
| Amber Valley                  | 71.4%           | 54.5%           | 61.1%           | 66.7%            | 66.7%            | ↑                         | ↔                          |
| Erewash                       | 85.7%           | 85.7%           | 81.8%           | 50.0%            | 54.5%            | ↓                         | ↑                          |
| S Derbyshire & S Dales        | 100.0%          | 100.0%          | 41.7%           | 40.0%            | 50.0%            | ↑                         | ↑                          |
| <b>Derbyshire</b>             | <b>82.0%</b>    | <b>74.1%</b>    | <b>66.7%</b>    | <b>57.1%</b>     | <b>61.3%</b>     | <b>↓</b>                  | <b>↑</b>                   |
| <b>Stat Neighbour Average</b> | <b>56.1%</b>    | <b>57.8%</b>    |                 |                  |                  |                           |                            |
| <b>England</b>                | <b>58.0%</b>    | <b>58.0%</b>    |                 |                  |                  |                           |                            |

Derbyshire's percentage of care leavers who were in custody has historically been higher than that seen for England but had decreased between 2010/11 and 2012/13. Outcomes at the end of March 2014 showed that 4.5% of care leavers were in custody. This was a small increase compared with 3.4% for 2012/13.

The percentage of care leavers in custody at the end of September had increased to 11.3% (7 young people). Although North East Derbyshire & Bolsover had the highest percentage of care leavers in custody, it should be noted that this refers to just one young person out of four in total in the cohort for this district at the end of September.

The percentage of care leavers in custody impacts on the above measures for suitable accommodation and employment, education or training as custody is deemed to be unsuitable accommodation and these young people are counted as not being in employment, education or training.

#### Percentage of care leavers in custody

| District                 | 2011/12 Outcome | 2012/13 Outcome | 2013/14 Outcome | Aug 2014 Outcome | Sep 2014 Outcome | Trend 2013/14 To Sep 2014 | Trend Aug 2014 To Sep 2014 |
|--------------------------|-----------------|-----------------|-----------------|------------------|------------------|---------------------------|----------------------------|
| Disabled Children        | -               | -               | 0.0%            | 0.0%             | 0.0%             | ↔                         | ↔                          |
| High Peak & N Dales      | 0.0%            | 0.0%            | 0.0%            | 0.0%             | 0.0%             | ↔                         | ↔                          |
| Chesterfield             | 0.0%            | 5.3%            | 2.6%            | 13.3%            | 15.8%            | ↑                         | ↑                          |
| NE Derbyshire & Bolsover | 33.3%           | 0.0%            | 33.3%           | 25.0%            | 25.0%            | ↓                         | ↔                          |
| Amber Valley             | 0.0%            | 9.1%            | 8.3%            | 22.2%            | 16.7%            | ↑                         | ↓                          |
| Erewash                  | 14.3%           | 0.0%            | 0.0%            | 0.0%             | 0.0%             | ↔                         | ↔                          |
| S Derbyshire & S Dales   | 0.0%            | 0.0%            | 0.0%            | 20.0%            | 12.5%            | ↑                         | ↓                          |
| <b>Derbyshire</b>        | <b>4.1%</b>     | <b>3.4%</b>     | <b>4.5%</b>     | <b>12.2%</b>     | <b>11.3%</b>     | <b>↑</b>                  | <b>↓</b>                   |
| <b>England</b>           | <b>3.3%</b>     | <b>3.0%</b>     |                 |                  |                  |                           |                            |

### Information & Analysis – Private Fostering

The number of children in Derbyshire who are living under a private fostering arrangement has been consistently low and has decreased since 2011. A private fostering arrangement is essentially one that is made privately (that is to say without the involvement of a local authority) for the care of a

child under the age of 16 (under 18, if disabled) by someone other than a parent or close relative with the intention that it should last for 28 days or more.

#### **Number of children living under a private fostering arrangement**

| <b>District</b>          | <b>31<sup>st</sup><br/>March<br/>2011</b> | <b>31<sup>st</sup><br/>March<br/>2012</b> | <b>31<sup>st</sup><br/>March<br/>2013</b> | <b>31<sup>st</sup><br/>March<br/>2014</b> | <b>31<sup>st</sup><br/>August<br/>2014</b> | <b>30<sup>th</sup><br/>September<br/>2014</b> |
|--------------------------|---|---|---|---|--|---|
| Disabled Children        | 1   | 1   | 0   | 0   | 0  | 0   |
| High Peak & N Dales      | 4   | 1   | 0   | 1   | 1  | 1   |
| Chesterfield             | 3   | 3   | 4   | 2   | 2  | 2   |
| NE Derbyshire & Bolsover | 2   | 1   | 0   | 3   | 3  | 3   |
| Amber Valley             | 2   | 1   | 0   | 0   | 0  | 0   |
| Erewash                  | 3   | 0   | 0   | 0   | 0  | 0   |
| S Derbyshire & S Dales   | 3   | 0   | 0   | 2   | 3  | 3   |
| <b>Derbyshire</b>        | <b>18</b>                                 | <b>7</b>                                  | <b>4</b>                                  | <b>8</b>                                  | <b>9</b>                                   | <b>9</b>                                      |

### **Information & Analysis – Youth Offending**

#### **Re-Offending Rates:**

Young people are tracked for one year following conviction to measure both the incidence and frequency of any re-offending. The incidence is measured as a percentage score showing the proportion of young people who re-offend. The frequency rate relates to the average number of re-offences per offender. The most up-to-date data from the Ministry of Justice is for young people convicted between 1<sup>st</sup> April 2011 and 31<sup>st</sup> March 2012.

Derbyshire's frequency rate of re-offending (0.72) is below the national, regional and statistical neighbour group average. This rate represents a decrease from the previous year (0.86). During the same period the national rate fell from 1.03 to 1.02.

Derbyshire's percentage incidence rate of re-offending (29.5%) also compares favourably against the national (35.4%), regional (31.5%) and statistical neighbour group (32.0%) averages.

Many areas are experiencing a rise in both rates of re-offending. This is generally attributed to the changes in police prosecution policy that result in lower risk young people no longer entering the criminal justice system. Typically, young people in the justice system are convicted of more serious offences and have a longer offending history. Derbyshire has experienced a continuing reduction in re-offending rates at a time when rates elsewhere have been rising. Derbyshire has sought to target high quality interventions with young people that will have the highest impact.

#### **Children in Care Offending:**

The percentage of children in care who received a final warning, reprimand or conviction saw decrease from 12.4% for 2011/12 to 5.1% for 2013/14. Derbyshire's outcomes have historically been higher than those seen for England and the average for our statistical neighbour group of authorities. However, Derbyshire's outcome for 2013/14 was lower (i.e. better) than the England outcome and statistical neighbour average for 2012/13.

Outcomes for the 12 months ending September 2014 show a decrease in performance when compared with 2013/14 outcomes with 5.5% of those aged 10 or over who had been in care for 12 months or more having received a final warning, reprimand or conviction. However, September 2014's outcome was an improvement when compared with the end of August 2014 (5.8%).

### Percentage of Children in Care who received a final warning, reprimand or conviction

| District                      | 2011/12 Outcome | 2012/13 Outcome | 2013/14 Outcome | Aug 2014 Outcome | Sep 2014 Outcome | Trend 2013/14 to Sep 2014 | Trend Aug 2014 to Sep 2014 |
|-------------------------------|-----------------|-----------------|-----------------|------------------|------------------|---------------------------|----------------------------|
| Disabled Children             | 0.0%            | 0.0%            | 0.0%            | 0.0%             | 0.0%             | ↔                         | ↔                          |
| High Peak & N Dales           | 5.9%            | 9.8%            | 4.3%            | 4.2%             | 4.0%             | ↓                         | ↓                          |
| Chesterfield                  | 8.9%            | 10.5%           | 7.8%            | 5.8%             | 5.9%             | ↓                         | ↑                          |
| NE Derbyshire & Bolsover      | 17.0%           | 2.6%            | 2.3%            | 16.3%            | 14.0%            | ↑                         | ↓                          |
| Amber Valley                  | 23.3%           | 10.8%           | 2.7%            | 0.0%             | 0.0%             | ↓                         | ↔                          |
| Erewash                       | 14.3%           | 9.5%            | 6.9%            | 3.6%             | 3.6%             | ↓                         | ↔                          |
| S Derbyshire & S Dales        | 9.1%            | 11.5%           | 8.7%            | 8.3%             | 8.7%             | ↔                         | ↑                          |
| <b>Derbyshire</b>             | <b>12.4%</b>    | <b>8.7%</b>     | <b>5.1%</b>     | <b>5.8%</b>      | <b>5.5%</b>      | <b>↑</b>                  | <b>↓</b>                   |
| <b>Stat Neighbour Average</b> | <b>7.4%</b>     | <b>5.8%</b>     |                 |                  |                  |                           |                            |
| <b>England</b>                | <b>6.9%</b>     | <b>6.2%</b>     |                 |                  |                  |                           |                            |

(Measures the percentage of children aged 10 and over who had been in care for 12 months or more who were convicted or subject to a final warning or reprimand during the previous 12 months)