

Agenda item 3

DERBYSHIRE HEALTH AND WELLBEING BOARD

16 March 2017

**Report of the Independent Chair of the Derbyshire Safeguarding
Children Board**

DERBYSHIRE SAFEGUARDING CHILDREN BOARD ANNUAL REPORT

1. Purpose of the report

To provide an update on the work of the Derbyshire Safeguarding Children Board (DSCB) and provide an overview of the Annual Report for 2015/16.

2. Information and analysis

The DSCB produces an annual report each year which includes information on performance and key issues which have arisen over the year. Statutory guidance issued by the Department for Education requires the Health and Wellbeing Board (HWB) to be presented the report and have an opportunity to discuss any particular areas with the Chair at a HWB meeting.

Ofsted also stipulate in their criteria for the review of LSCBs that governance arrangements with other statutory partners, including the HWB and the Children's Trust, enable progress to be made for improvement in the care and protection of children and young people.

Derbyshire HWB recognises that strong communication between the various boards and bodies working to safeguard children and adults is important. Therefore annual reporting arrangements are in place to ensure a mutual awareness of key priorities and areas for action.

3. Overview of the DSCB annual report

The DSCB annual report for 2015-16 highlights the increasing activity and pressures in ensuring that children and young people are adequately safeguarded in Derbyshire. An indication of the increasing volume of activity is demonstrated by the steep rise in the number of children in Derbyshire who are the subject of child protection plans. In the period April 2014 to March 2015 there were 644 children who were the subject of child protection plans, this rose steeply to 738 children at the end of March 2016. This figures continues to rise with 890 children subject to child protection plans (as at 30 November 2016), representing an increase of 22.9%. This rise is also

matched by the level of statutory intervention in Children and Young people's lives.

Over the past year, the DSCB has ensured that multi-agency response is robust to meet this challenge and that agencies and their staff have worked together to keep children and young people safe. The DSCB ensures that safeguarding remains a priority, particularly in a culture of transformation and change. Throughout 2016, assurances at Chief Officer level ensured that safeguarding is, and will remain, a priority notwithstanding budgetary pressures.

The annual report reflects that the local learning and improvement framework is strong and learning from reviews is captured and disseminated. Similarly, the policies and procedures which are in place are of a high quality and regularly reviewed to reflect changes in practice or knowledge. The training provided across the agencies is of a high quality and matches the needs identified by the Training Provider's sub group and from any learning arising from reviews.

The report outlines how the DSCB are mindful of the challenges for the future following on from the Wood Review and the Children and Social Work Bill, but recognise that this is also a time of opportunity to build upon the strong relationships and arrangements already in place.

4. Priorities for 2017

In addition to the publication of the Annual Report for 2015-16, the DSCB has agreed that the priority areas for the Board in 2017 are:-

- **Online safety:** DSCB want to help keep young people safe when they are accessing the internet. The Board is working closely with young people to understand the key issues for them and to put in place safeguards.
- **To improve the response to situations of neglect:** The DSCB is supporting the introduction of a graded care profile. This is a tool which will help all agencies measure whether the parenting a child receives is good enough.
- **Ensure the effective use of early help assessments across all agencies:** The DSCB is going to collate the numbers of the early help assessments to see how these are being used and by which agencies.
- **Public Protection:** The DSCB will be exploring along with other relevant Boards whether a Public Protection Board would be helpful in coordinating the work of all agencies.

5. RECOMMENDATION

That the Health and Wellbeing Board is asked to:

- Note the annual report of the Derbyshire Safeguarding Children's Board.

Chris Cook
Independent Chair
Derbyshire Safeguarding Children's Board

Derbyshire **Safeguarding Children** Board

Annual Report 2015 – 2016



1	Chair's Foreword	2
2	Introduction	3
3	Characteristics of Derbyshire	4
4	Executive Summary	8
5	Membership of the Derbyshire Safeguarding Children Board and subgroups	9
6	CSE Steering Group	11
7	Serious Case Review Sub-Committee	12
8	Workforce Sub-Group	14
9	Training Providers Sub-Group	14
10	Quality and Performance Sub-Group	17
11	Education Sub-Group	18
12	Policy and Procedures Sub-Group	22
13	Budget	23
14	Participation of Children and Young people in Safeguarding arrangements	24
15	Care Proceedings	25
16	Children who are missing	25
17	CDOP	26
18	Children in Need	28
19	S11 – Audit	29
20	Allegations against staff and volunteers	29
21	Attendance Monitoring	31
22	DSCB Structure (Appendix 1 – Derbyshire SCB Membership)	40
Appendix 1- Derbyshire Safeguarding Childrens Board Membership		42

1. Chair's Foreword



I would like to take this opportunity to welcome you to the Derbyshire Safeguarding Children Board Annual report which covers the period 1st April 2015- 31st March 2016. This period predates my role as Chair which began in May 2016. I would therefore like to take this opportunity to thank my immediate predecessors, Christine Cassell and Andy Stokes for their leadership of the DSCB and for the strong safeguarding infrastructure and partnerships which I have inherited from them; these are the cornerstones of effective safeguarding work.

The annual report details the work which has been undertaken by the DSCB during this time. The key objectives of the Board have centred around e- safety and also ensuring the emotional wellbeing of children and young people. The Board also continued to progress the objectives identified in 2014- 2015 relating to children and young people affected by parental substance misuse, children and young people using legal highs and also children and young people who were affected by domestic violence. I have continued this work into this year and along with partner agencies, I have also identified new objectives for the coming year relating to on –line safety , ensuring a multi- agency and effective approach to early intervention for families and tackling neglect and the impact this has on children and young people.

Whilst there are undoubtedly many challenges that face child protection professionals, I have been particularly impressed in my first months as Chair with the partnership commitment and interagency information sharing which I have witnessed. These are fundamental to effective safeguarding.

The Independent Review of Safeguarding Boards for Children, which was completed by Alan Woods earlier this year, along with the Government's response to this, will undoubtedly mean a time of reflection and potential change for LSCBs.¹ I view this as a time of opportunity for the Board to continue to build upon the strengths identified and to ensure the safeguarding arrangements for children in Derbyshire are the very best they can be.

Since my appointment I have endeavoured to meet with all those agencies who contribute to the work of the Safeguarding Board. I am consistently impressed by their commitment and determination to ensure children and young people are safe in Derbyshire. I look forward to working closely with them to achieve this objective.

Chris Cook

Independent Chair – Derbyshire Safeguarding Children Board

¹ Wood Report : review of the role and functions of local safeguarding children boards (2016) , Review of the role and functions of local safeguarding children boards :the government's response to Alan Wood CBE. (2016)

2. Introduction

About DSCB, the statutory and legislative context

2.1. Derbyshire Safeguarding Children Board (DSCB) was formally established in April 2006 in response to the requirements of the Children Act 2004 and its accompanying guidance at the time, 'Working Together to Safeguard Children' (2006). DSCB has a range of roles and statutory functions, details of which are below;

2.2. The Derbyshire Safeguarding Children Board will:

- 2.2.1. Coordinate what is done by each person or body represented on the Board for the purposes of safeguarding and promoting the welfare of children in the area; and
- 2.2.2. Ensure the effectiveness of what is done by each person or body for those purposes (Section 14 Children Act 2004)

2.3. Regulation 5 of the Local Safeguarding Children Boards (LSCB) Regulations 2006 sets out that the functions of the LSCB, in relation to the above objectives under section 14 as follows:

1(a) Developing policies and procedures for safeguarding and promoting the welfare of children in the area of the authority, including policies and procedures in relation to:
The action to be taken where there are concerns about a child's safety or welfare, including thresholds for intervention;

ii) Training of persons who work with children or in services affecting the safety and welfare of children;

(iii) Recruitment and supervision of persons who work with children;

(iv) Investigation of allegations concerning persons who work with children;

(v) Safety and welfare of children who are privately fostered;

(vi) Co-operation with neighbouring children's services authorities and their Board partners;

(b) Communicating to persons and bodies in the area of the authority the need to safeguard and promote the welfare of children, raising their awareness of how this can best be done and encouraging them to do so;

(c) Monitoring and evaluating the effectiveness of what is done by the authority and their Board partners individually and collectively to safeguard and promote the welfare of children and advising them on ways to improve;

(d) Participating in the planning of services for children in the area of the authority; and

(e) Undertaking reviews of serious cases and advising the authority and their Board partners on lessons to be learned.

Regulation 5 (2) which relates to the LSCB Serious Case Reviews function and regulation 6 which relates to the LSCB Child Death functions are covered later in this report.

Regulation 5 (3) provides that an LSCB may also engage in any other activity that facilitates, or is conducive to, the achievement of its objectives.

Working Together 2015 (Chapter 3: 16) states that the Independent Chair of an LSCB must publish an annual report on the effectiveness of child safeguarding and promoting the welfare of children in the local area.

2.4. This report is the Annual Review of the work of DSCB for the business year 2015-2016 and a reflection of how our priorities have been progressed. It is a rigorous and transparent assessment of the performance and effectiveness of safeguarding in Derbyshire. The report will demonstrate the contributions made by DSCB partner agencies toward the work of DSCB and most importantly what difference has been made to the lives of children and young people within the county.

2.5. It will provide the public, practitioners and main stakeholders with an overview of how well children in Derbyshire are protected, and identify any gaps in service development and challenges ahead for the coming year.

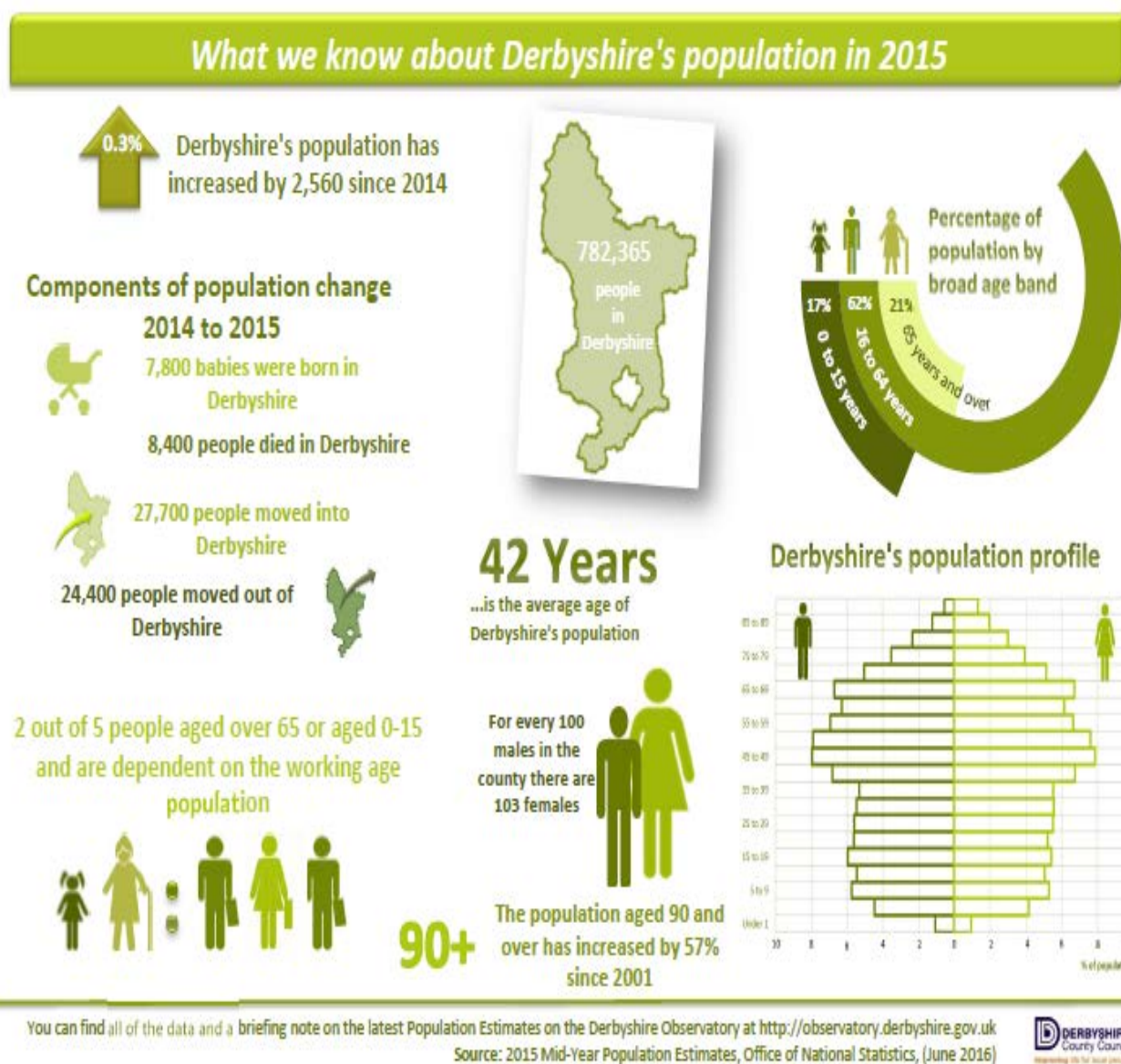
2.6. The DSCB business plan is reviewed regularly by the DSCB Core Business Group. The plan contains details of progress against priorities, which DSCB sub group is responsible for actions, and impact and outcomes as a result of completed work.



3. Characteristics of Derbyshire and the demographic context of the DSCB

3.1. Derbyshire is a two tier authority comprising of the county council and eight district and borough councils. There are currently five clinical commissioning groups (CCGs), two of which also cover areas outside the Derbyshire boundaries due to their locality. A number of key agencies work in partnership across both Derbyshire and Derby City areas, including the Police, Community Rehabilitation Services and some Health providers. Therefore strong links exist between Derbyshire Safeguarding Children Board (DSCB) and Derby Safeguarding Children

Board, including the sharing of certain Board sub- committees. There is one Police and Crime Commissioner covering Derbyshire (including Derby City)



3.2. As illustrated above the overall population for Derbyshire is 782,365. The estimated figure for children aged between 0-17 years in Derbyshire at the mid-point of 2015 (utilising calculations based on the 2011 census)³ is 153,377. Of these children 41, 629 would have been aged between 0-4 years. The number of referrals to Social care decreased during this period which echoed a national reduction. The picture nationally is that the number of referrals to Children

² <https://observatory.derbyshire.gov.uk/IAS/Custom/Pages/People/population.aspx>

³ <https://observatory.derbyshire.gov.uk/IAS/Custom/Pages/People/population.aspx>

Social Care services in the year ending 31st March has decreased this year, from 635,600 in 2015 to 621,470 in 2016, a decrease of 2.2%. This is the second year running there has been a national decrease in the number of referrals in the year ending 31st March, following a larger than usual increase nationally in 2014.⁴

3.3. In relation to the ethnicity of the Derbyshire population the following information is provided on the Derbyshire County Council website, 'Our small (1.5 percent) ethnic minority population (England 9.1 percent) is mainly concentrated in the districts of Erewash, Chesterfield and South Derbyshire. The largest ethnic group is Indian, which makes up 0.4 per cent of the total population of Derbyshire'.⁵

3.4. A useful source of information regarding the lives of Children in Derbyshire during this period is the Derbyshire Joint Strategic Needs Assessment: The State of Health and Social Care (2015)ⁱ. This notes the following:-

'The Marmot Review (2010) suggests there is evidence that childhood poverty leads to premature mortality and poor health outcomes for adults. Reducing the numbers of children who experience poverty should improve these adult health outcomes and increase healthy life expectancy. Children in poverty (all dependent children under 20) 15.1% compared to 17.0% for East Midlands and 18.0% for England. The percentage has fallen over the last year but not significantly. Children in poverty (under 16s) were recorded as 15.9% compared to 17.8% for East Midlands and 18.6% for England. The percentage has fallen over the last year but not significantly so.'

Public Health Outcomes Framework-
Starting well indicators
 updated-March 2016

Indicator	Period	Derbyshire Districts										
		England	East Midlands	County	Amber Valley	Bolsover	Chesterfield	Derbyshire Dale	Erewash	High Peak	North East Derbyshire	South Derbyshire
Starting well												
1 Children in poverty (all dependent children under 20)-Persons	2013	18.0	17.0	15.1	15.6	20.0	19.3	8.5	17.1	12.2	14.3	11.3
2 Children in poverty (under 16s)-Persons	2013	18.6	17.8	15.9	16.5	20.9	20.6	8.9	18.0	13.1	15.0	11.9

3.5. The above report also provides statistical data in relation to the numbers of children in care in Derbyshire. The report notes that, 'children and young people in care are among the most socially excluded children in England'. It notes that 'there are significant inequalities in health and social outcomes' for these children. The rate of 41 children per 10,000 in Derbyshire is

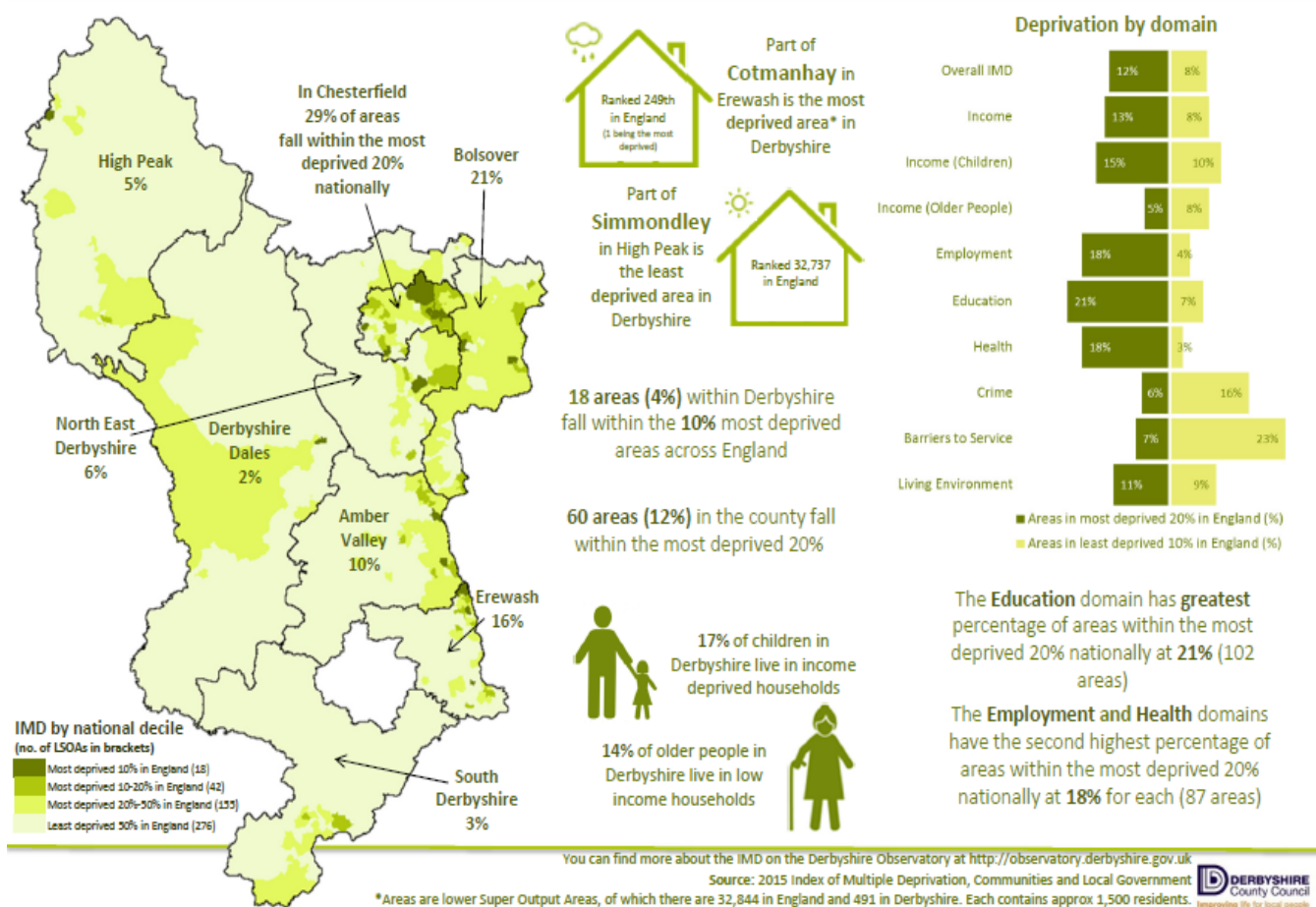
⁴ https://www.gov.uk/government/uploads/system/uploads/attachment_data/file/564620/SFR52-2016_Main_Text.pdf

⁵ https://www.derbyshire.gov.uk/council/news_events/about_derbyshire/default.asp

significantly lower than 52 for the East Midlands and 60 for England. In Derbyshire the rate fell from the last measured period (43 per 10,000) but not significantly so.

3.6. One of the priority areas for the Board is identifying and addressing the impact of neglect on children and young people. It is important to have an understanding of the socio-economic composition of Derbyshire.

What we know about deprivation in Derbyshire in 2015



3.7. Whilst neglect can occur across all social groups the evidence suggests disadvantage and poverty are strong contributing factors to all forms of maltreatment including neglect⁶. An understanding of the extent of deprivation in an area assists in ensuring the provision of appropriate services.

⁶ **The relationship between poverty, child abuse and neglect: an evidence review.** / Bywaters, Paul ; Bunting, Lisa; Davidson, Gavin; Hanratty, Jennifer; Mason, Will ; McCartan, Claire; Steils, Nicole.

4. Executive Summary

The annual report highlights the increasing activity and pressures in ensuring that children and young people are adequately safeguarded in Derbyshire. The pressures are however matched by the commitment and actions which have been taken by partner agencies across Derbyshire. An indication of the increasing volume of activity is demonstrated by the steep rise in the number of children in Derbyshire who are the subject of child protection plans. In the period April 2014-March 2015 there were 644 children who were the subject of child protection plans, this rose steeply to 738 children at the end of March 2016. This figures continues to rise with 890 children subject to child protection plans (as at 30th November 2016), representing an increase of 22.9%. This rise is also matched by the level of statutory intervention in Children and Young people's lives. As detailed in section 5 of the annual report there has been an increase in care proceedings of 25% within Derbyshire during this period.


The DSCB ensures that the multi-agency response is robust to meet this challenge and that agencies and their staff have worked together to keep children and young people safe. The DSCB has assured itself through consideration of the work of the sub groups and committees and by considering and commissioning specific audits of work across the agencies. An example of this is the CSE audit which was commissioned by the CSE steering group. Going forward, the audit function of the DSCB has been strengthened by the appointment of a specific audit officer and the DSCB have undertaken a mock Joint Targeted Area Inspection, which is a multi-agency audit to determine the response of agencies to domestic abuse.

The DSCB also regularly reviews the risk register and business plan which highlights particular areas of concern and activity. Partners are able to hold each other to account and challenge where necessary. At a recent development workshop participants provided examples of professional challenge which had taken place around safeguarding decisions, demonstrating a culture where such challenge is encouraged and supported.

The DSCB ensures that safeguarding remains a priority, particularly in a culture of transformation and change. Assurances have been provided at Chief Officer Level that safeguarding is and will remain a priority notwithstanding budgetary pressures. The DSCB connects to other Boards to ensure a joined up approach to the protection of children and young people, presenting the annual report to the Children's Trust Board and Health and Wellbeing Board and Community Safety partnership. The DSCB also has an active and influential role in local family justice arrangements, contributing to the Local Family Justice Board.

The local learning and improvement framework is strong and learning from reviews is captured and disseminated. The Serious Case Review sub - committee is independently chaired and any review is undertaken thoroughly and robustly.

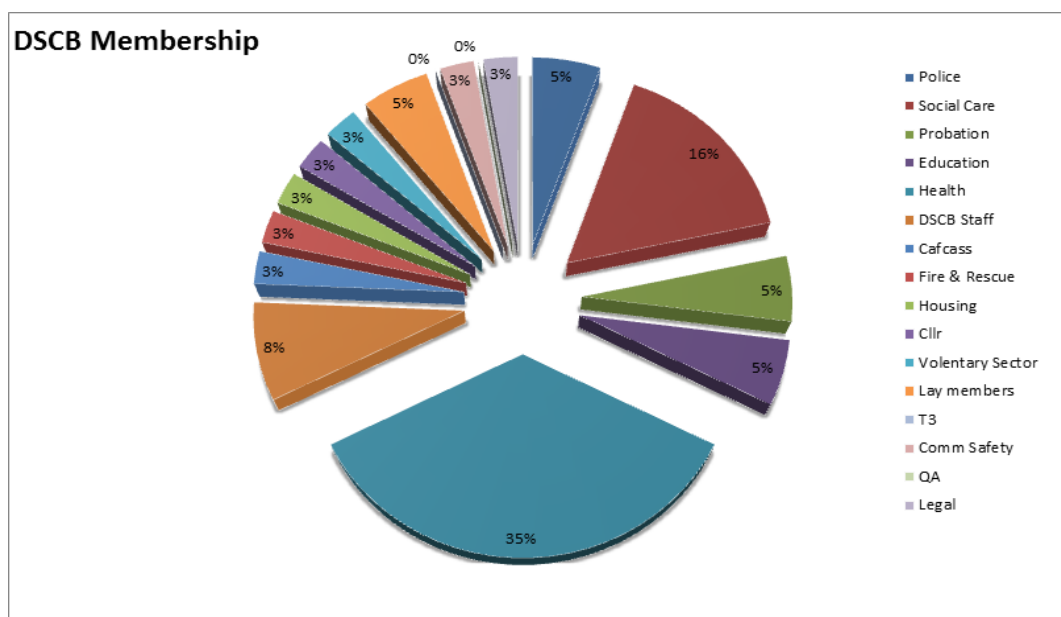
The Policies and procedures which are in place are of a high quality and regularly reviewed to reflect changes in practice or knowledge. These are available to all safeguarding partners and agencies. The training provided across the agencies is of a high quality and matches the needs



identified by within the Training Provider's sub group but and from any learning arising from reviews.

The DSCB are mindful of the challenges for the future following on from the Wood Review and the Children and Social Work Bill. This is also a time of opportunity to build upon the strong relationships and arrangements already in place.

5. Membership of the Derbyshire Safeguarding Children Board and subgroups



5.1. The details of the Board Members are contained in Annex A. The membership of the Board is continually reviewed, to ensure that the appropriate persons and agencies are represented.

5.2. Lay Members

5.2.1. DSCB has secured two lay independent members who attend the DSCB main Board meetings (maintaining a 100% attendance record) and are also proactive in engaging in safeguarding activities outside of these meetings. Both Lay members have also volunteered to attend subgroups and will be in attendance at the Education sub group and the Policies and Procedures sub group. These groups reflect their professional areas of expertise and interest. The lay members are well respected and valued members of the Board.

5.3. Reports from the lay members.

5.3.1. The lay members visited 'Starting Point' (Derbyshire County Council's initial point for referral of concerns relating to a child) and commented that as it was providing a better response to safeguarding concerns through a quicker and more collaborative

service. The co-location of key agencies within one setting was immediately appreciated as being beneficial for reducing delays in addressing safeguarding concerns. The lay members noted the willingness and openness of staff to respond to their questions. They presented their view to the DSCB meeting and sought assurances that staffing levels were adequate to cope with the potential volume of calls which may be received by the front door. The staffing levels have been reviewed at Starting Point incorporating this feedback.

- 5.3.2. The lay members viewed the production of Chelsea's Choice was had found it a powerful drama which they considered would reach a majority of teenagers with its powerful message regarding CSE awareness.
- 5.3.3. The lay members have sought assurances that information and learning from CDOP and SCRs will be available to all safeguarding sectors and that these lessons will be added to training packages. The DSCB training co-ordinator has now joined the action plan sub group to ensure these lessons are included in training programmes.
- 5.3.4. One of the lay members raised the question as to whether children with additional needs and also the charity sector are fully represented at Board and sub- group level and this additional representation is now being sought.
- 5.3.5. The lay members have commented positively upon the pro-activity of the DSCB in terms of its response to CSE, via the CSE steering group.
- 5.3.6. One of the lay members raised concern about safeguarding training available to school governors/volunteers, having sourced the training portfolio it appeared there was only one course was available to this group of people. The lay member has ensured that appropriate safeguarding training packages are available to this cohort.



5.4. The DSCB has the following subgroups:


- Child Sexual Exploitation Steering Group
- Serious Case Review Sub Committee

- Joint Workforce Sub Group (Jointly with Derby City Safeguarding Children Board)
- Joint Training Providers Sub Group (Jointly with Derby City Safeguarding Children Board)
- Quality and Performance Sub Group
- Education Sub Group
- Policies and Procedures Sub Group

6. Child Sexual Exploitation Steering Group

6.1. This sub group provides strategic direction in relation to protecting children and young people from child sexual exploitation. The membership of the group includes representatives from Children's Social Care, The Community Safety Partnership, and the police and health agencies along with specialist sexual health agencies.

6.1.1. The work of the group has included:-

- Commissioning an independent audit of CSE cases. This looked at 50 cases where CSE was considered a factor and identified a range of different CSE models in Derbyshire and highlighted the usefulness of the CSE toolkit for practitioner use.
 - Co-operating with a Scrutiny committee review of CSE.
 - Reviewing CSE training, E.G. training for first responders, ambulance service, health, district council staff and e-learning packages.
 - Review of the impact and response to Chelsea's Choice (638 responses were received from young people who had viewed the production.)
 - Supporting the police in their delivery of 'It's Your Call' training in schools, aimed at years 9 and 10, addressing sexting and age appropriate conduct.
 - Supporting training for Derbyshire County Council Councillors and District and parish councillors in relation to CSE.
 - Supporting a film for young people to warn them of the dangers of circulating indecent images.
 - Contributing to the development of an East Midlands CSE framework.
 - Considering the potential CSE issues relating to licensing. Training was arranged for taxi firms and consideration given to utilising a kite mark scheme for taxi firms to demonstrate those who have undergone the training.
 - Door hangers to be created and to be available at hotels advising on available help for CSE situations.
- 

- Regime of regular information sharing meetings regarding perpetrators and areas of concern.
- Contributing to the development of a CSE referral pathway.
- Contributing to a Ucreate project to raise CSE awareness. Ucreate enables a social or community message to reach schools and colleges.
- Contributing to CSE awareness day on 18th March 2016.

7. Serious Case Review Sub Committee

7.1. The Local Safeguarding Children Boards Regulations 2006 includes the requirement for LSCBs to “undertake reviews of serious cases in specified circumstances. Regulation 5(1) (e) and (2) set out an LSCB’s function in relation to serious case reviews (SCRs), namely:

5 (1) (e) undertaking reviews of serious cases and advising the authority and their Board partners on lessons to be learned.

(2) For the purposes of paragraph

(1) (e) a serious case is one where:

(a) Abuse or neglect of a child is known or suspected; and (b) Either — (i) the child has died; or (ii) the child has been seriously harmed and there is cause for concern as to the way in which the authority, their Board partners or other relevant persons worked together to safeguard the child”.

7.2. Working Together 2015 states LSCBs should consider conducting reviews on cases which do not meet the SCR criteria. The DSCB refers to these cases as serious incident learning reviews (SILRs). Working Together 2015 is clear that the LSCB should oversee implementation of actions resulting from these reviews and reflect on progress in its annual report.

7.3. The DSCB SCR sub committee meets bi-monthly unless an additional extraordinary meeting is required due to an urgent new case for consideration. The sub-committee is independently chaired by a Service Director from Derby City Council under a reciprocal arrangement. A sub group of the SCR Sub Committee is the SCR Action Plans group, which has responsibility for the oversight and monitoring of recommendations and actions from all SCRs and SILRs in which DSCB is involved.

7.4. Membership is a small multi agency group of professionals from the SCR Sub Committee who meet bi monthly to scrutinise progress and evidence on recommendations, and sign off recommendations when agreed as complete. The SCR Action Plans group reports regularly to the SCR Sub Committee. The SCR regularly reviewed its membership and terms of reference during the period and expanded its membership to include a Deputy Assistant Director from the Education Improvement Service.

- 7.5. A serious case review was commissioned by the sub-committee relating to a baby who died whilst in the care of their family. This report is currently being finalised by the report author following the conclusion of the Coroner's inquest in 2016.
- 7.6. A serious incident learning review was commenced following the death of a young person who had taken drugs purchased through the 'dark web'. The publication of the report did not take place during the time period covered by this report as the Coroner's inquest had not yet then taken place. Following on from this inquest the report was represented to the DSCB at a main Board meeting on 14th September 2016 and will be published on the DSCB website. The recommendations and learning points have been included in the work of the action plan sub group and disseminated at the Board meetings.
- 7.7. A serious incident learning review was commenced following the death of a young person from hanging. The sub- group have engaged fully with the work being undertaken by Public Health colleagues in order to scope and assess the incidence of such deaths and to determine the preventative actions which may be put in place for the future. The importance of ensuring effective early help provision were noted in both the serious incident learning reviews and this was identified as a priority action for the Board for the forthcoming year.
- 7.8. In addition to the commissioning and oversight of serious incident learning reviews and serious case reviews The following key tasks were undertaken by the sub-committee:-
- New posters and leaflets were produced detailing key learning points from reviews which had taken place in 2013-2014 (these replaced the previous posters which related to learning from the period 2008-2012.)
 - Closer links have been forged with the Adult Care Director to consider issues relating to young people who may be care leavers or transitioning to care services provided by Adult Care.
 - Clarity has been sought around obtaining consistency for OFSTED notifiable incidents, particularly as regards practice in Derbyshire and Derby City.
 - Consideration has been given in relation to the questions of house fires in Derbyshire. All councils/local authorities/districts/ borough within Derbyshire have suffered one or more fire fatalities since April 2010, including the deaths of 12 children from three incidents⁷ The Fire service are full members of the Board and contributed to the Development Workshop to consider priorities for the following year.
 - Serious Case reviews which are significant from other LSCBs are disseminated through this group and the learning from these spread across agencies. The sub –committee has also co-ordinated contributions to SCRs which are being undertaken by neighbouring authorities in the event that there is a local agency connection.

⁷ <http://www.derby-fire.gov.uk/campaigns/think-sprinkler/facts-and-figures/>



- Consideration given to the actions taken in relation to concerns surrounding FGM and the appropriateness of the response to this by agencies.
- As a result of a learning event initiated by health professional's recommendations to improve the interaction of the family justice system with safeguarding professionals are to be considered by the DSCB on 15th December 2016. If these are approved then they are to be passed to The Honourable Mr Justice Keehan Family Division Liaison Judge Midland Circuit.
- Consideration of the work of ADFAM regarding the toxic effects of Opioid Substitution Therapy (OST). The report had highlighted that in the 10 years to 2013 there have been 110 deaths of children from the toxic effects of OST.
- The SCR has continued to monitor criminal proceedings which are connected to matters considered within the sub-committee to determine if further actions/ review are required.

8. Workforce Sub Group

8.1. This joint Derbyshire and Derby City sub group carries out the requirement of DSCB to scrutinise arrangements for maintaining a safe, sufficient and effective workforce. Initial workforce capacity reports were obtained at the end of 2014 and provided early indications of the challenges arising to some partner agencies over a short period within the year. It was decided that figures for a full year should be obtained from all relevant agencies and scrutinised in detail. The Workforce sub group commissioned capacity reports in respect of key front line roles including front-line social workers, police officers (Public Protection Unit), community midwives, school nurses, health visitors.

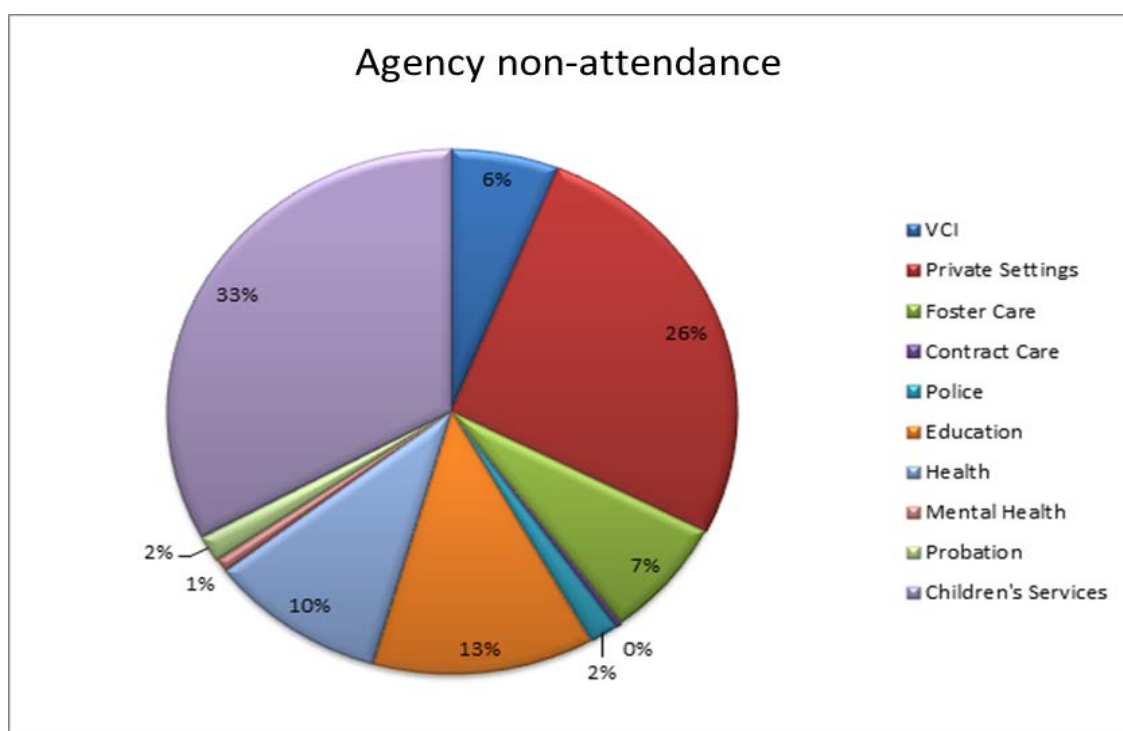
8.2. The following areas were progressed by the group:-

- Workforce capacity scrutinised across the partnership,
- LADO information reviewed in order to consider impact on the workforce.
- Supervision guidance prepared.
- Training needs evaluated by reference to the identified workforce.

9. Training Providers Sub Group

9.1. A report from the DSCB training co-coordinator was presented to the DSCB at the Board meeting on 14th September 2016. The report confirmed that during the period 1st April 2015 and 31st March 2016 a total of 1, 498 persons had attended safeguarding training offered through the 74 courses comprising the DSCB multi agency training programme. This compares

to 71 courses which were delivered to 1,297 participants in 2014/15. It was noted that 279 participants cancelled prior to the course commencing and that 246 persons did not attend on the day. This non-attendance was evaluated as detailed below and consideration given as to how this could be most effectively managed in order to ensure that non – attendance did not absorb much needed resources. A commitment was obtained from Children’s Social Care, which comprised the largest single agency for non-attendance to address this issue amongst workers.

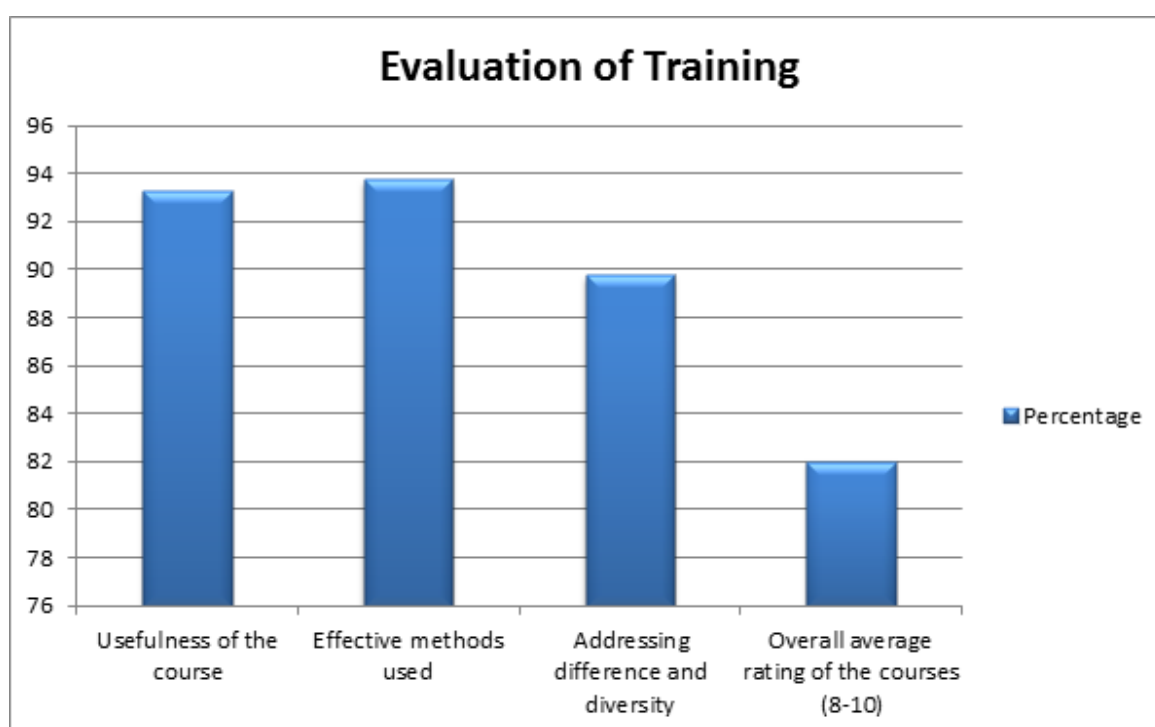


9.2. Consideration has been given to the introduction of a regime of charging in relation to those persons not attending the training who had booked onto the training, but had not cancelled in a timely manner or at all⁸. Non-attendance had increased from 10.6% in 2014/15 to 16.42% in 2015/16. Charging for non – attendance was not felt to be appropriate at this stage as there was a concern that people may be discouraged from accessing the training which would not be beneficial in terms of achieving the aims and objectives of the DSCB. Non-attendance on training courses would be elevated through the management hierarchy and this situation will be monitored by the DSCB.

9.3. The quality of training is regularly evaluated through the use of both feedback forms on the day and also after the event telephone evaluations. This evaluation has highlighted that the vast majority of participants (91.5) attending courses would recommend the course and found it useful in supporting their professional role and responsibilities (93.75). Those finding that effective teaching methods had been used was 93.75 and 89.75% of attendees considered that

⁸ The DSCB meeting on 14th September 2016

the course had appropriately considered the issues surrounding difference and diversity. The importance of cascading and sharing learning is reinforced by the training section to ensure that information reaches the widest possible relevant audience. 51% of attendees indicated that they had shared their learning with their manager (10%) at team meetings (20%) and informally with colleagues (21%). 71% of attendees recorded that they had put the learning into practice. Examples of the responses included the following, 'what I learnt helped me to ask parents the right questions and establish a rapport more quickly. I was able to consider what was really happening and look into family backgrounds and reasons things were going on'. Participants have been asked to consider how changes in practice have changed the lives of children and young people; examples given included being able to better meet the needs of children who were being fostered by attendees and also identifying risks more effectively and ensuring that the correct interventions and support were available.



9.4. Other sample feedback which has also been captured includes:-

- The multi- agency nature of the training and being able to share practice across other professions is extremely helpful.
- Professional networking is very beneficial to the participant's practice.

9.5. In addition to the 74 courses detailed additional bespoke training has been provided for 22 specific teams or partner agencies, for example, safeguarding training has been provided for Youth Offending volunteers and the school transport chaperones.

9.6. E-learning is also being provided by the training team via a learning platform and 1,035 training courses were accessed through internet based learning. The largest proportion was in relation

to the courses 'Introduction to Safeguarding' (744 participants) and 'CSE and introduction' (162 participants).


9.7. The DSCB monitors carefully the training capability and strategy of the Board and any risks associated with a reduction in this training capability would be addressed through the DSCB risk register.


9.8. The Training Providers Subgroup is a group that runs jointly with the Derby City Safeguarding Board and includes representatives from both local authorities and Health organisations and the Police and Probation services (as they were then known). The membership of the group is regularly reviewed to ensure all appropriate agencies are represented and informed regarding the provision of multi-agency training and that the training programmes offered accurately reflects the identified needs within the area. In September 2015 it was identified that a representative from education should be included in the membership of the group to ensure that the training needs of staff involved in education could be effectively considered. The group evaluates the impact it has through the use of an impact log, for example it has introduced a validation scheme to ensure the quality and effectiveness of those persons and organisations providing training.

9.9. The DSCB interim board manager is a member of and chairs the Local Family Justice Board Training sub-group and it is intended that this will ensure greater awareness across the DSCB partnership of training courses relating to local family justice arrangements and the multi-agency involvement in this. The DSCB took a key role in the organisation of the Annual Training Day on 14 November 2016. This was attended by 100 delegates and had a theme of 'Communication and Participation.' The day was rated as good or excellent by all attendees and agencies across the partnership were represented.

10. Quality and Performance Sub Group

10.1. The Quality and Performance sub group meets on a quarterly basis and the group is attended by Children's Services (including representatives from the teams for children with additional needs), health organisations, the police and education professionals and Derbyshire Legal Services and Probation. The key areas of work considered during this period included:-

- Consideration of the S175 Schools safeguarding audit report.
 - Report on the services available for children with disabilities.
 - Children's Social Care audits.
 - Dissents from case conferences.
 - The QA sub-group undertook a day of multi-agency auditing on 10th September 2015.
 - An independent audit in relation to CSE was commissioned by the group.
- 

- MACIE training (Multi-Agency Child Investigation Exercise) was undertaken by representatives from the group. This involved a simulated child protection incident and the response which would have been provided by all the representative agencies. The training was facilitated and organised by the National College of Policing. The feedback confirmed that this had been a beneficial exercise for all those involved, assisting agencies to understand the rationale for others' response in certain situations.
 - S11 Audits.
 - Consideration of the challenge day audits undertaken by Derbyshire Children's Services.
- 10.2. The DSCB independent chair represents DSCB as a member of the Derbyshire County Council Children's Services Performance Board, which meets regularly to scrutinise management information relating to the provision of services for children. This provides an opportunity for the DSCB to challenge senior representatives of Derbyshire Children's Services on all aspects of safeguarding performance and request assurance and action when necessary.
- 10.3. Section 11(Children Act 2004) requires the agencies of DSCB to undertake a section 11 audit to provide evidence to the Board that they are meeting their legal requirements in terms of safeguarding arrangements (see governance arrangements earlier in the report). Previously an electronic audit was trialled through 'Survey Monkey'. A different approach has been initiated this year for the Section 11 audits using a combined audit tool with Derby City Safeguarding Board. The Derby and Derbyshire Safeguarding Children Boards strengthened the section 11 process that is completed by agencies, updated audit forms and guidance documentation were agreed to ensure that agencies provide consistent and clearly illustrated feedback and analysis of whether standards are being met.
- 10.4. The Quality & Performance sub-group will obtain updates from agencies to demonstrate the changes that had been brought about by activity arising from the Section 11 self-assessments that had been carried out in the previous year. A report summarising the updates will be presented to the Quality Assurance sub group. This report will describe how agencies have demonstrated the action taken as a result of previous audits. As a result of the updated process partner agencies were able to provide a greater level of detail, demonstrating those issues that have changed or emerged, linked to the S11 standards, over the last year and what has been done to improve safeguarding arrangements. S11 audit updates were received from: DCC, Derbyshire Constabulary, Probation (NPS) Derbyshire Healthcare Foundation Trust, CAF/CASS, Derbyshire CCG's and Community Rehabilitation Company.
- 10.5. It is planned that that a programme of quality audits visits will be added in the coming year to ensure that agencies continue to demonstrate active compliance with their S11 responsibilities and to also include themes from the JTAI inspection regime in order to fully prepare agencies for the joint inspections.
- 



11. Education Sub-Group

11.1. The creation of an education sub group has been an extremely positive development in terms of fully engaging schools in the safeguarding agenda. The DSCB Education subgroup first met in September 2015 and continues to meet at quarterly intervals. The Chair is a Chair of Governors at Derbyshire Secondary School and the group is supported by the Child Protection Manager for Education. The group involves primary and secondary schools, special schools and FE as well as other key partners such as social care, health and the police. The schools are both academies and maintained schools. The importance of engaging schools was highlighted in the Wood Review⁹ noting particularly that an increasing number of schools exist separately from the local authority (academies and free school and independent schools) and it is therefore vital to ensure that safeguarding is a priority in these settings.

11.2. *The group have identified areas of achievement thus far :-*

- An agreed protocol for out of hours and holiday contacts. This meant that heads were able to contribute to safeguarding work during the summer holidays;
- An agreed approach to the transition and transfer of records to ensure that records transfer between educational settings in a timely manner;

⁹ The Wood Review - <https://www.gov.uk/government/publications/wood-review-of-local-safeguarding-children-boards>

- Support for safeguarding conferences which has ensured key relevant issues have been covered;
- Presentations from starting point, the new school nurse service and the police which has allowed a wider understanding of the needs of all partner agencies to ensure schools appreciate the full safeguarding systems;
- Flagged up to the Safeguarding Board and the local authority ongoing concerns about starting point and the early help changes, and the lack of support for children on emotional issues and the involvement of CAMHS; and
- Flagged up to the local authority concerns about Framework-I (the local authority's computerised case management system) and difficulties with the secure email for schools and the need for a secure platform to communicate with schools.
- Supporting safeguarding initiatives for example, the work of the NSPCC re, keeping safe, on line safety, the CSE strategy.¹⁰

11.3. The current focus of the work of the subcommittee is undertaking a training gap analysis to produce a revised training programme, closer working with the police and health, continued support to the local authority to get the right access to information and the most effective systems, quality assurance of safeguarding in schools and looking at how the learning from SCRs can be taken into schools.¹¹ Designated Safeguarding Lead Forums are held at quarterly intervals ensuring that schools are informed of the most current safeguarding initiatives.

11.4. The Education subgroup has also been very influential in promoting and ensuring that an increasing amount of schools complete the section 175 audits.

11.5. The tables below detail the number of schools within Derbyshire and the numbers of schools who have completed the audit for the 2015-2016 academic years.

¹⁰ Report of Jane Haywood presented to the DSCB meeting on 15th December 2016.

¹¹ Report of Jane Haywood presented to the DSCB meeting on 15th December 2016


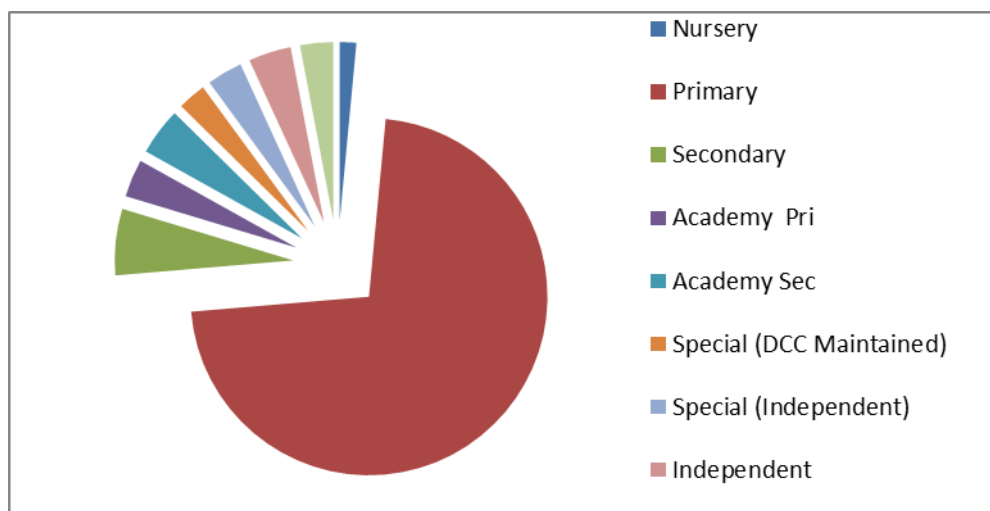


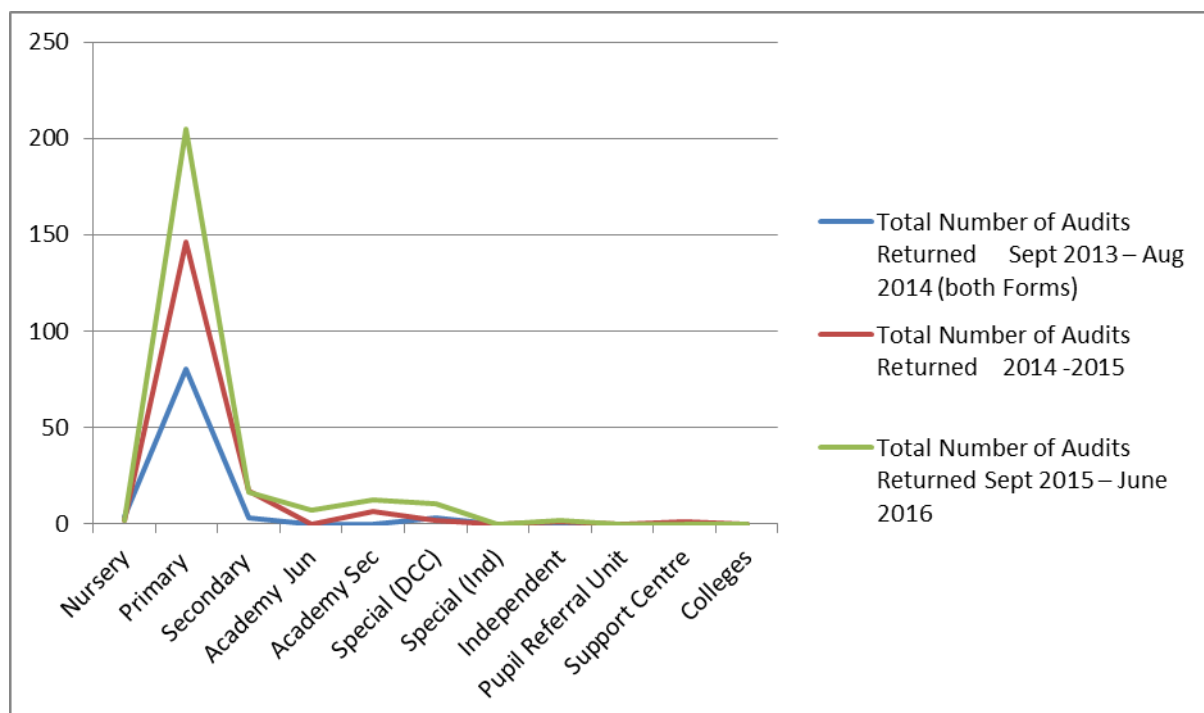
Table 1 – School completing S175 Safeguarding Audit (by type)**Table 2**

Audits Returned Sept 2015 – June 2016	Number of Schools	Audit Returned	Action Plan included
Nursery	7	5	2
Primary	337	202	137
Secondary	26	16	11
Academy Primary	16	7	4
Academy Secondary	20	12	9
Special (DCC Maintained)	12	8	4
Special (Independent)	15	2	2
Independent	18	2	1
Pupil Referral Unit / Support Centre	14	0	0
	465	254	170

54% of all schools in Derbyshire have completed (and returned) this audit in this period ¹²

The year on comparison of returns notes that there has been an increasing number of audits over the last three years.

¹² Report presented to the DSCB on 15th December 2016 by the Education Sub Group



	Total Number of Audits Returned Sept 2013 – Aug 2014 (both Forms)	Total Number of Audits Returned 2014 -2015	Total Number of Audits Returned Sept 2015 – June 2016
Nursery	4	2	2
Primary	80	146	205
Secondary	3	17	16
Academy Jun	0	0	7
Academy Sec	0	6	12
Special (DCC)	3	2	10
Special (Ind)	0	0	0
Independent	0	1	2
Pupil Referral Unit	0	0	0
Support Centre	0	1	0
Colleges	0	0	0
Total	90	175	254


11.6. The improvement in completion and return is noted to be 31% from the preceding period. The rate of increase of returns since 2013 is 64%. This represents an increase in safeguarding awareness and activity across the educational sector which is supported and encouraged by the DSCB and in particular the work of the subgroup. The DSCB also considers in detail the areas identified in the audits as areas where greater input in terms of information provision or formal training may be required. The audit form is revised each year to reflect changes in safeguarding

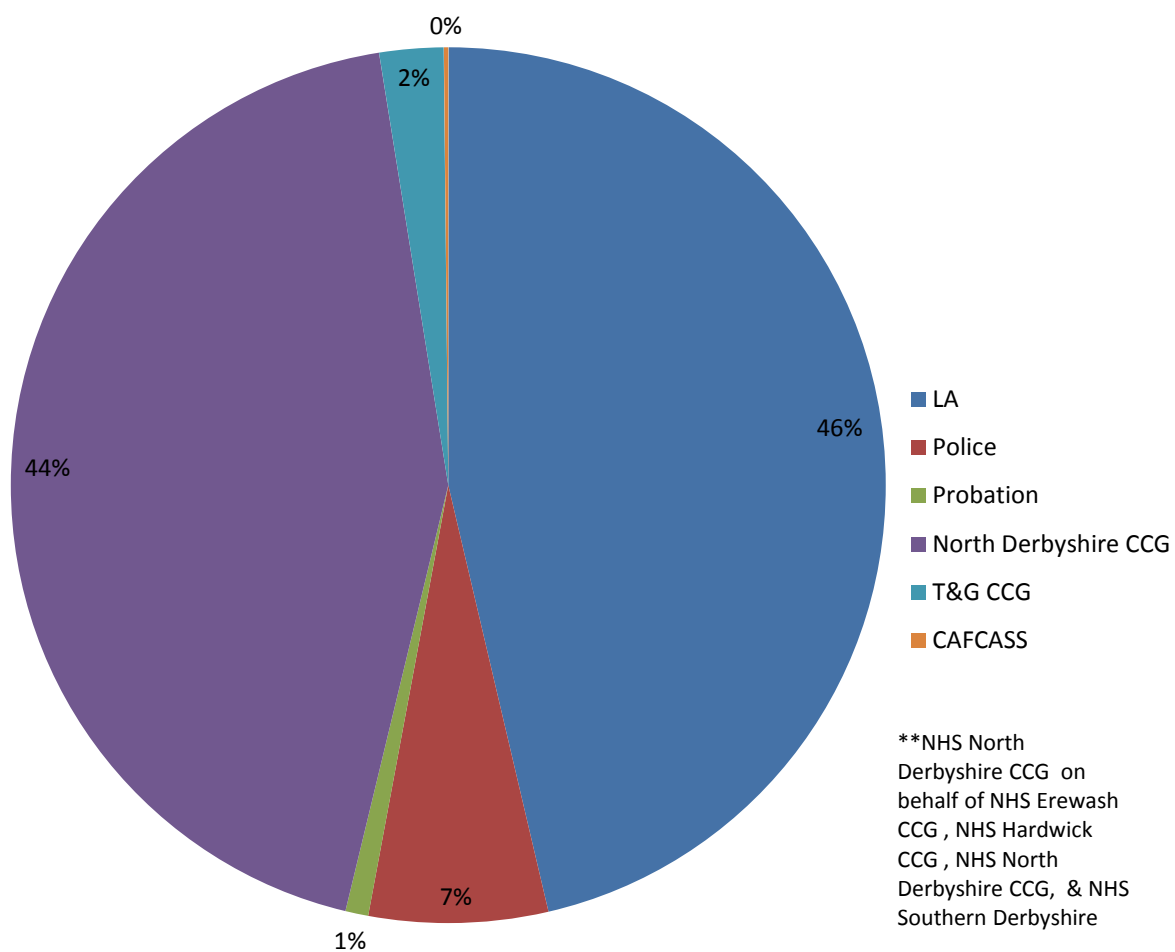
priorities, for example the audit for the period in question required schools to analyse their knowledge and understanding related to HBV, Forced marriage and Extremism and prevent.

- 11.7. The Chair of the Education sub group presented the findings from the audit to the Board meeting on 15th December. The accompanying report highlighted the issue of continuing to ensure the engagement of schools in a rapidly changing educational landscape, ‘the future will see schools break away from the Local Authority becoming more independent in line with the Government agenda. The challenge will be sustaining good working relationships, sustaining a link and an oversight of safeguarding in that school.’ This echoes the concerns of the Wood Report and has been included in the DSCB risk register.

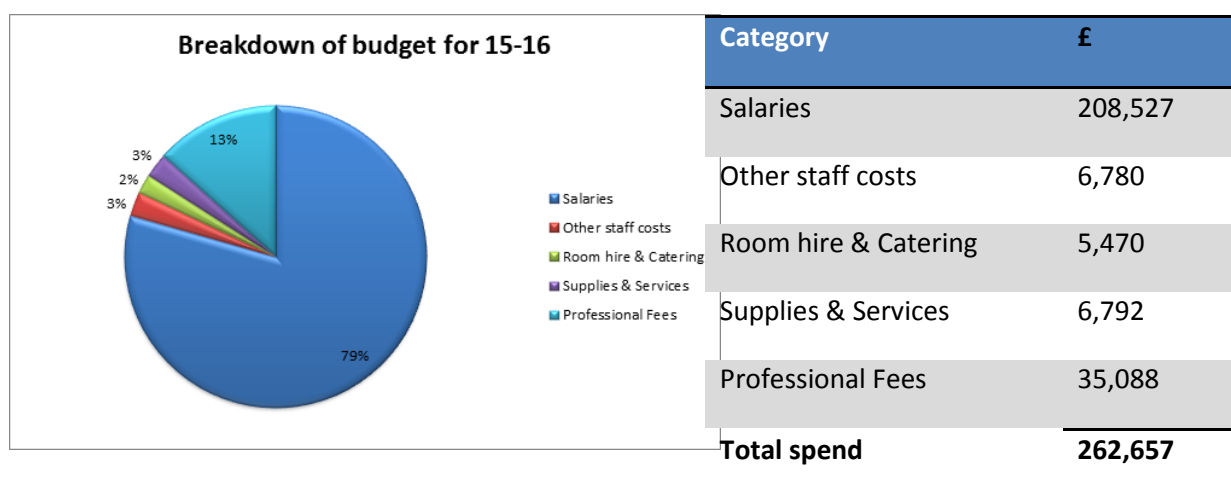
12. Policies and Procedures Sub Group

- 12.1. Representatives from a wide range of partner agencies attend this quarterly meeting which ensures that the policies governing the work of the agencies are fully effective. The work of the group has included the following:-

- Stronger Families, Safer Children (SFSC) model child protection conferences; ensuring an awareness of and understanding of this model of operating child protection conferences within Derbyshire. Updating policies regarding the submission of reports for such conferences were completed.
 - Regular revisions and updates of all policies as required reflecting changes in practice and knowledge.
 - Ensuring GP involvement in child protection case conferences.
 - Multi- agency and self- harm and suicide guidance, self-harm pathway and action plan.
 - Ensuring policies and procedures are consistent with Working Together 2015.
 - Updating the policy for adults who disclose non recent abuse to reflect feedback from survivors groups.
 - Ensuring an FGM policy is in place and there is awareness of this.
 - Consideration of the Transparency Project’s recommendations regarding the use of digital audio recordings of child protection conference.
- 

13. The Budget**2015-16 Contributions**

Board	Amount £
LA	150,157.38
Police	21,390.86
Probation	2,754.88
NHS North Derbyshire CCG <i>on behalf of NHS Erewash CCG , NHS Hardwick CCG , NHS North Derbyshire CCG, & NHS Southern Derbyshire CCG</i>	141,601.04
T&G CCG	7,681.26
CAFCASS	518.57
Total	324,104.00



13.1. The under spend from 2014-2015 was retained to provide a financial basis to conduct serious case reviews which were anticipated or ongoing. The DSCB and partner agencies wished to support fully the learning and development processes involved with serious case reviews.

14. Participation of Children and Young People in safeguarding arrangements

14.1. The DSCB has identified that greater engagement by children and young people would be beneficial in the direct work of the Board. Derbyshire Children's Services have been very keen to ensure that children are given every opportunity to attend and/or contribute to child protection conferences; 9.63% of subject children attended child protection conferences in the period covered by this report. Many other children were assisted and supported in contributing their experiences to the case conference process by indirect means. Children in care reviews are conducted with increasing promptness (91% are conducted within timescale, an improvement from 86.30 % for the period 2014/15) providing children with an opportunity to express their views. 96.30 % of children provide their views for inclusion in their reviews, either by attendance in person, by briefing an advocate to speak for them or by other facilitative medium.

- 14.2. One of the priority areas identified for the coming year is online safety. The DSCB are arranging for a survey of young people's on-line activity to take place in 2017. A meeting has already taken place with young people in order to scope the questions to form the questionnaire. The DSCB have also engaged with Derbyshire Youth Council and the Derbyshire Children in Care Council, involving them in this work.

15. Care Proceedings

- 15.1. The DSCB maintained an awareness of current issues in the both the local and national family justice arena. This is through Derbyshire County Council Legal Services and CAFCASS representation at the Board and sub committees and also through the provision of care proceedings statistics within the performance report annually and additionally as requested
- 15.2. CAFCASS figures show that in the 12 months to March 2016 there were 12,781 new cases compared to 11,159 in the previous year (an increase of 14%).¹³ An increase in care proceedings of approximately 25% was reported by Children's Social Care during 2015-16. Nationally there has been an unprecedented rise in the numbers of care proceedings and this has been reflected in the numbers of care proceedings in Derbyshire. The DSCB also has feedback from the Local Family Justice Council as a standing agenda item, ensuring that all partner agencies are also fully aware of developments both locally and nationally. Should the rise in proceedings continue then it would be anticipated that this maybe an issue rose in relation to workforce capacity.
- 15.3. It was noted that the Vice Chair of the Board had presented information and research from ADFAM addressing families affected by drug and alcohol misuse to the Designated Family Judge in Derbyshire. This has heightened judicial awareness of the dangers of Opioid Substitution Therapy.
- 15.4. The new Designated Family Judge for Derby HHJ Bellamy has requested to observe a Board meeting and will be attending the DSCB meeting on 17th March 2017 .

16. Children who are missing

- 16.1. Children's social care collates information relating to children who go missing from care. The figures record a decrease in the incidence of missing episodes for the 2015/16 period. The number of children whom are recorded as missing is overall lower for the period 2015/ (326) than 2014/14 (322) . A consistent decrease from February – September 2016 was noted. There was a decrease in the total number of missing episodes of 14%, from 720 missing

¹³ CAFCASS reporting information

episodes to 619. The percentage of cases where return interviews was conducted fell from 87.10 for the period 2014/15 to 83.04% for the period 2015/16. The percentage of return interviews had risen to 87.52% by May 2016. The percentage of interviews which were conducted within 72 hours rose from 57.10% in 2014/15 to 61.90 in 2015/16.

17. Child Death Overview Panel (CDOP)

17.1. The sixth Derby City and Derbyshire County Child Death Overview Panel report was presented to the DSCB meeting on 15th December 2016. The report records that between 1st April 2015 and 31st March 2016 there were 75 child deaths across Derbyshire (including Derby City). 28 of these child deaths have been evaluated by the Child Death Overview Panel. The table below details the number and proportion of deaths grouped by age category. ¹⁴ 57.1% of these deaths related to male children and 42.9% related to female children.

Age group	Number of deaths	Percentage of deaths	Proportion of the 0-17 population
0-27 days	11	39.3%	5.3%
28 days-<1 year	<5	39.3%	
1-4 years	<5		
5-9 years	<5		
10-14 years	<5		
15-17 years	6	21.4%	17.6%
Grand Total	28	100.0%	100.0%

The categorisation of deaths was carefully considered by the panel and recorded as follows:-

Category	Number of deaths	Proportion of deaths
Perinatal/neonatal event	9	32.1%
Chromosomal, genetic and congenital anomalies	5	17.9%
Malignancy	<5	50.0%
Deliberately inflicted injury, abuse or neglect	<5	
Trauma and other external factors	<5	
Chronic medical condition	<5	
Suicide or deliberate self-inflicted harm	<5	
Acute medical or surgical condition	<5	
Grand Total	28	100.0%

¹⁴ Derby City and Derbyshire Child Death Overview Panel Annual Report April 2015- March 2016.

17.2. An action log is detailed in the report highlighting the areas of work which have been progressed, including the following :-

- Nappy sack work with national organisations.
- Consanguinity related deaths have been investigated and recommendations formed.
- Gaining confirmation of use of Paediatric Observation Priority Score (POPS) to help identify acutely ill children across local and neighbouring health services providers.
- Raising awareness with health and social care around key messages to share with parents of what to do when a child is ill.
- Learning about subtle ECG (electrocardiogram) changes in young people – Cardiologist support has been provided at CRH (Chesterfield Royal Hospital) and RDH (Royal Derby Hospital).
- Communication issues between Glenfield's and RDH cardiology have been addressed through developing guidelines.
- ROSPA (Royal Society for the Prevention of Accidents) national congress presentation in November 2015 – 'Shaking the Baby – Just not the Deal' DVD requested by Gloucestershire CDOP.
- National CDOP Presentation in February 2016.
- Rationalisation of membership of CDOP and inclusion of injury prevention specialist and Derbyshire Fire Rescue Service when needed.
- Fire briefing for landlords of social and private housing in light of local fire.
- Substance Misuse and Children's Emergency Department pathway finalised.
- Chapter Updates for CDOP and Responding to a Sudden Unexpected Death of a Child completed in March 2016.
- Baby safe sleep and 'Shaking the Baby – Just not the Deal' DVD evaluation completed.
- Contribution to National CDOP Database consultation.

Statistics

The number of children who are subject to child protection plans is discussed at each board meeting, the number of children subject to child protection plans in 2014/2015 was 644, this increased to 738 in 2015/2016 and the figure was 890 as at 30/11/16.

18. Children In Need

18.1. The DSCB received statistic at each board meeting relating to the number of children in need.

Number of Children in Need at 31st March 2016 (excluding CP & CIC)

District	31/03/2014	31/03/2015	31/03/2016	% Change
Disabled Children	525	564	496	-12.1
High Peak & North Dales	409	387	492	27.1
Chesterfield	415	478	416	-13.0
North East Derbyshire & Bolsover	552	715	764	6.9
Amber Valley	502	433	452	4.4
Erewash	403	417	514	23.3
South Derbyshire & South Dales	404	454	440	-3.1
Derbyshire	3210	3448	3574	3.7

The figure demonstrated a year on year increase on the number of children in need.

Number of Children in Need at 31st March (including CP & CIC)

District	31/03/2014	31/03/2015	31/03/2016	% Change
Disabled Children	575	608	554	-8.9
High Peak & North Dales	615	547	686	25.4
Chesterfield	635	726	637	-12.3
North East Derbyshire & Bolsover	835	960	997	3.9
Amber Valley	678	570	632	10.9
Erewash	614	629	709	12.7
South Derbyshire & South Dales	549	619	659	6.5
Derbyshire	4501	4659	4874	4.6

The percentage increase was greater still when children subject to child protection and children in care were included. It is noted that nationally the number of children who were the subject of a child protection plan at 31st March has increased this year, from 49,700 in 2015 to 50,310 in 2016, an increase of 1.2%.¹

The DSCB also seeks information relating to the number of children who are subject a CP plan at the end of each month that had disabilities recorded on their computerised case management record.

Number of children subject to a CP Plan at the end of each month that had disabilities recorded on their Framework-I record

District	Apr-15	May-15	Jun-15	Jul-15	Aug-15	Sep-15	Oct-15	Nov-15	Dec-15	Jan-16	Feb-16	Mar-16
Derbyshire	29	30	32	35	36	38	39	46	49	47	51	53

Number of referrals made to Social Care during the year

District	2013/14	2014/15	2015/16	% Change
Disabled Children	325	399	290	-27.3
High Peak & North Dales	1963	1300	1205	-7.3
Chesterfield	1934	1694	1221	-27.9
North East Derbyshire & Bolsover	2818	2204	2028	-8.0
Amber Valley	2073	1531	1415	-7.6
Erewash	1911	1373	1354	-1.4
South Derbyshire & South Dales	1532	1212	1085	-10.5
Derbyshire	12556	9713	8598	-11.5

It was noted that the number of referrals to social care has decreased but there is a considerable increase in the number of children who have child protection plans.

18.2. The DSCB is appraised of data regarding the numbers of privately fostered children in Derbyshire. A private fostering arrangement is essentially one that is made privately (without the involvement of a local authority) for the care of a child under the age of 16 (or under 18, if disabled) by someone other than a parent or close relative with the intention that it should last for 28 days or more. The DSCB is mindful that privately fostered children may be particularly vulnerable given that they may not otherwise be known to services. The DSCB has previously campaigned to ensure that privately fostered children are notified to Derbyshire Children's Services. Between 2014 & 2015 there was a 30% increase in notifications from 8 to 12 children. The DSCB also seeks assurance from Derbyshire Children's Services that single assessments will be undertaken in relation to children who are being privately fostered where appropriate. The below table records such assessments and it is noted that there has been an increase in such assessments being undertaken.

Number of Privately Fostered children at the end of each month

District	Apr-15	May-15	Jun-15	Jul-15	Aug-15	Sep-15	Oct-15	Nov-15	Dec-15	Jan-16	Feb-16	Mar-16
Derbyshire	11	11	11	10	8	9	8	10	9	9	9	9

Number of Single Assessments completed in each month where Private

Fostering was flagged as a 'Presenting Issue'

District	Apr-15	May-15	Jun-15	Jul-15	Aug-15	Sep-15	Oct-15	Nov-15	Dec-15	Jan-16	Feb-16	Mar-16
Derbyshire	3			1	1		1	1	2	2	1	5

19. Partner Agency Safeguarding Reports, (S11) Audit and Analysis

19.1. It was noted that Section 11 (and markers of good practice self-assessment 2016) Audits have been completed by partner agencies confirming their continued compliance with their safeguarding functions and duties.

20. Allegations against staff, carers and volunteers

20.1. The DSCB has continued to monitor the number and nature of the LADO (Local Authority Designated Officer) referrals. Working Together 2015 requires that Local authorities should have designated a particular officer, or team of officers (either as part of multi-agency arrangements or otherwise), to be involved in the management and oversight of allegations against people that work with children.

20.2. There were 362 referrals submitted to the LADO for consideration between 1st April 2015 and 31st March 2016 compared with 349 for the same period 2014/2015 and 298 for 2012/2013. The figures indicate a continual rise in the numbers of referrals year on year.

20.3. The LADO team additionally takes a number of queries where it is quickly established that these do not meet the criteria for LADO and these are recorded on the advice log, 41 calls of this nature were received for the period 2014/2016 and 42 for 2015/2016. Of the 362 referrals received 17 did not meet with the LADO criteria, 12 were referred on to other authorities, 6 were found to be malicious and 18 false.

20.4. Of the 362 referrals received 93 resulted in an Initial Strategy meeting being convened and of those 10 led to a 1st review/resolution strategy meeting. As a result of the complexity of the allegation and subsequent investigation there were 2 cases that required 2nd reviews/resolution meetings.

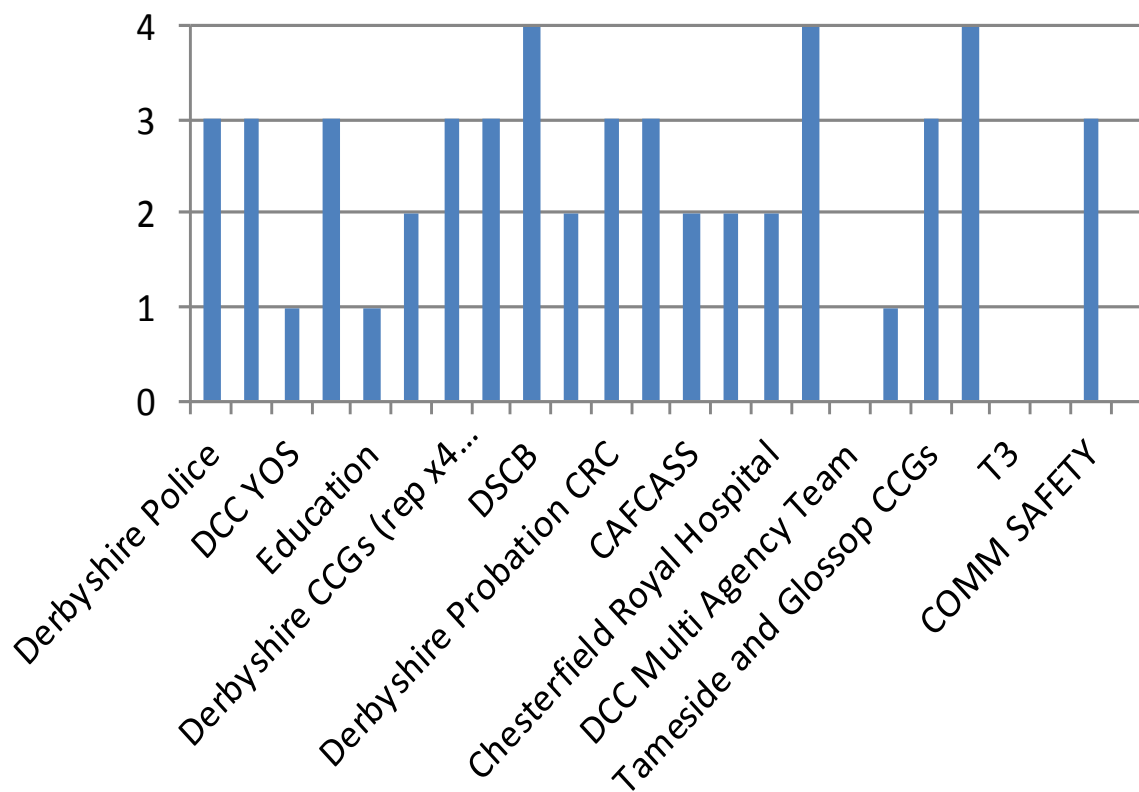
LADO Referrals by occupational group				
AGENCY	2012/2013	2013/2014	2014/2015	2015/2016
DCC	8	6	6	5
DCC other				3
Education teaching staff	33	92	97	
Education other	47	20	20	
Primary School				53
Secondary School				52
(College) Further/High education	2	3	2	3
Child Care	26	9	19	20
Health	10	4	10	14
Police	2	3	2	5
Transport Provider				14
Sports				14
Faith Group				6
Private Residential Unit	23	47	54	44
DCC Residential Unit	7	12	26	16
DCC Foster Care	6	18	22	19
Other LA Foster Care	5	3	0	2
Private Foster Care	6	13	15	17
Voluntary Sector	6	18	4	7
Private Sector				22
Other	39	50	72	46
Total	240	298	349	362

21. Attendance Monitoring

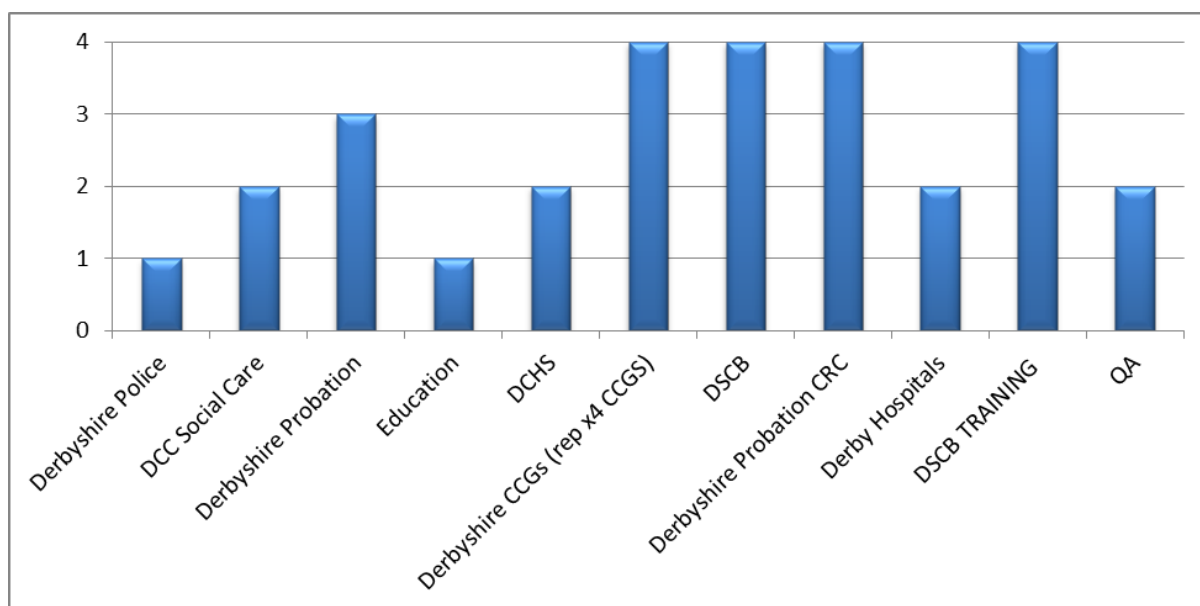
Attendance and membership at meetings is monitored to ensure effective representation, where this is not effective it is addressed by the chair.

Full Board Attendance

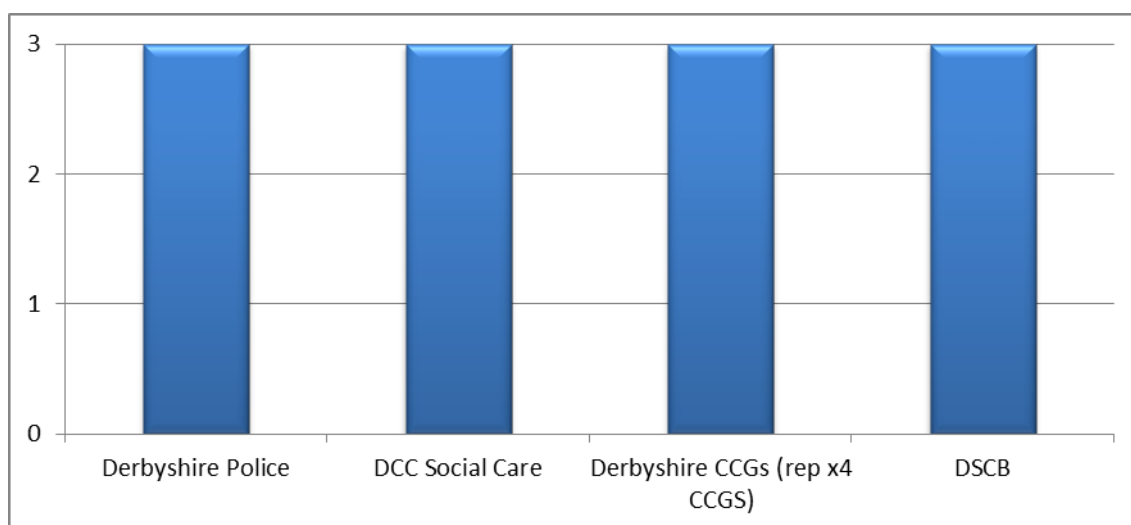
□



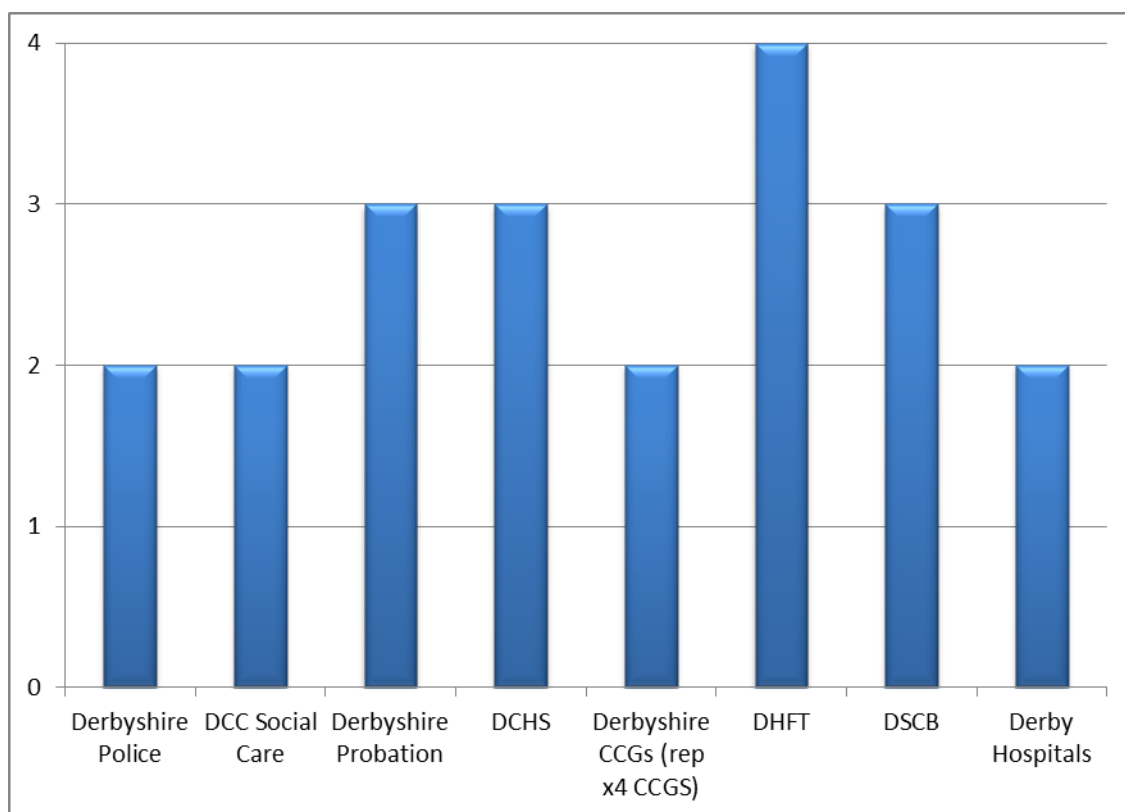
Work Force Development



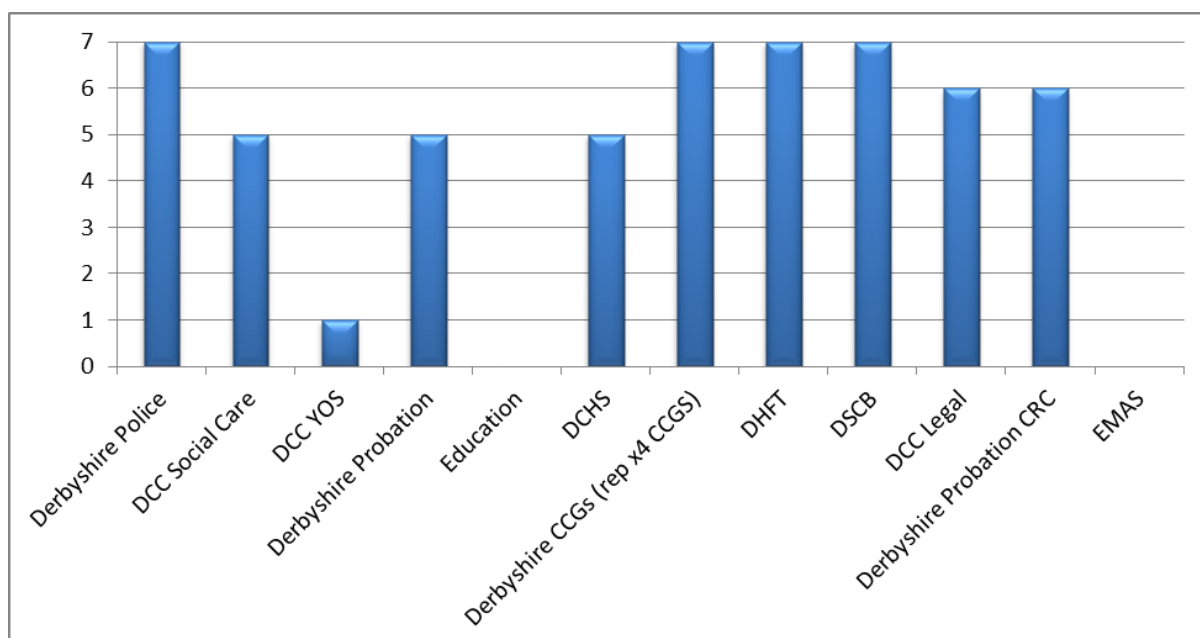
DSCB Core Business



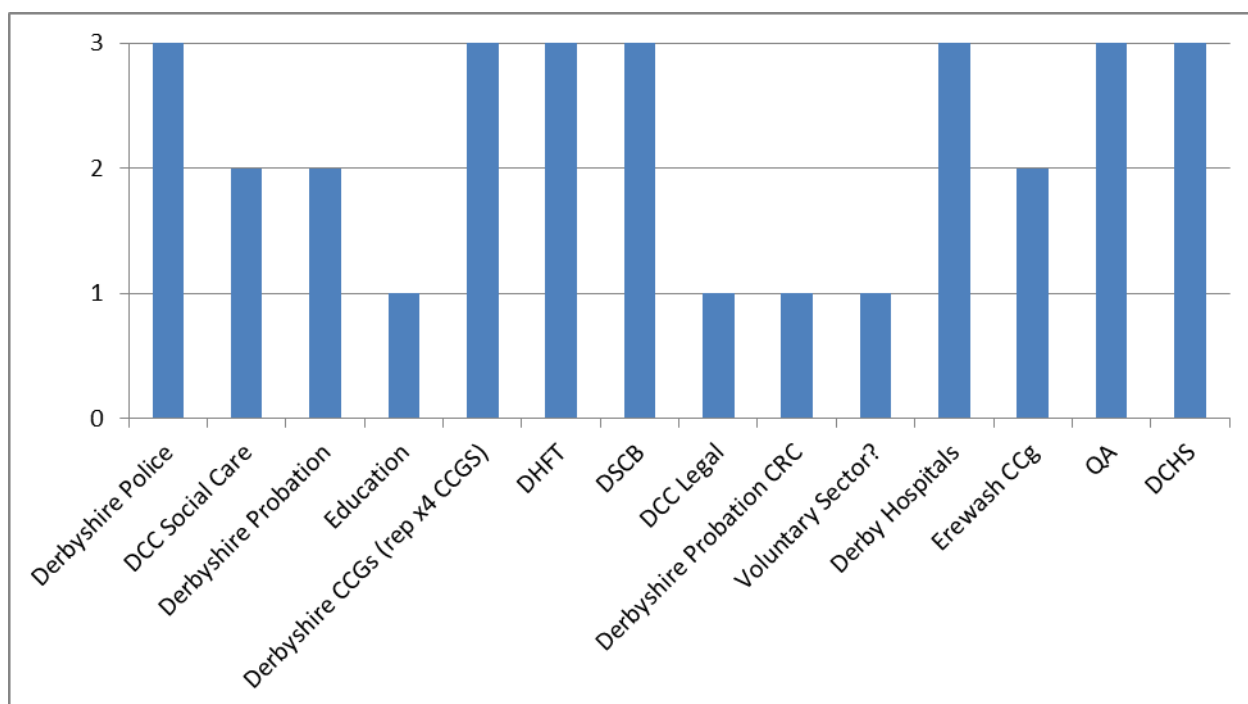
Training Providers



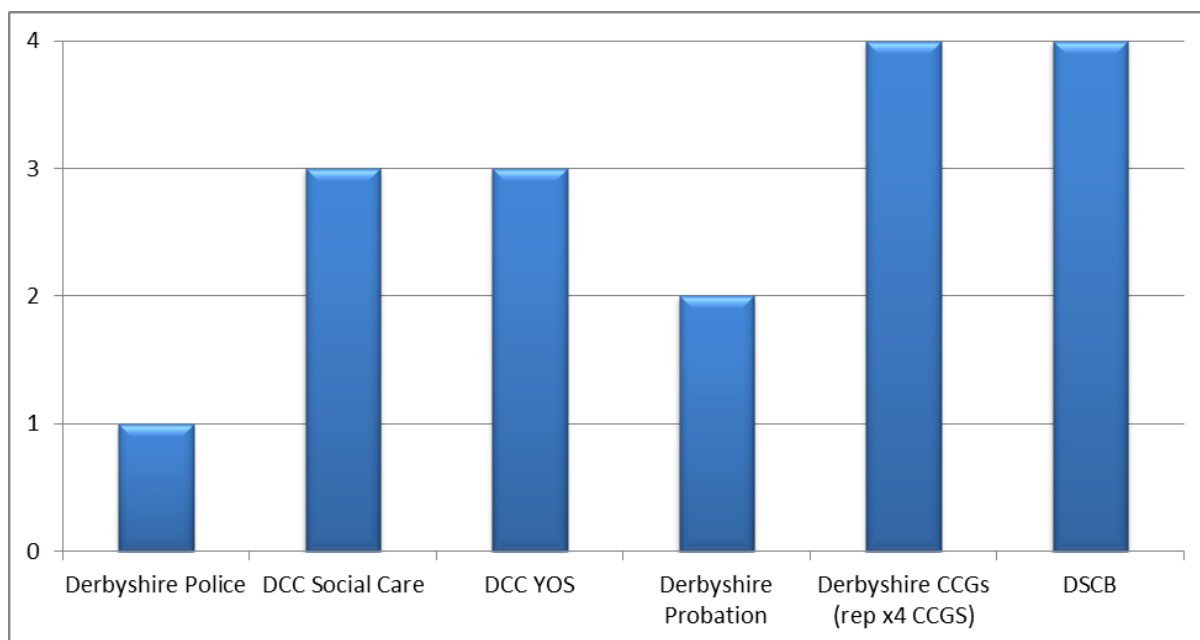
SCR Sub Committee



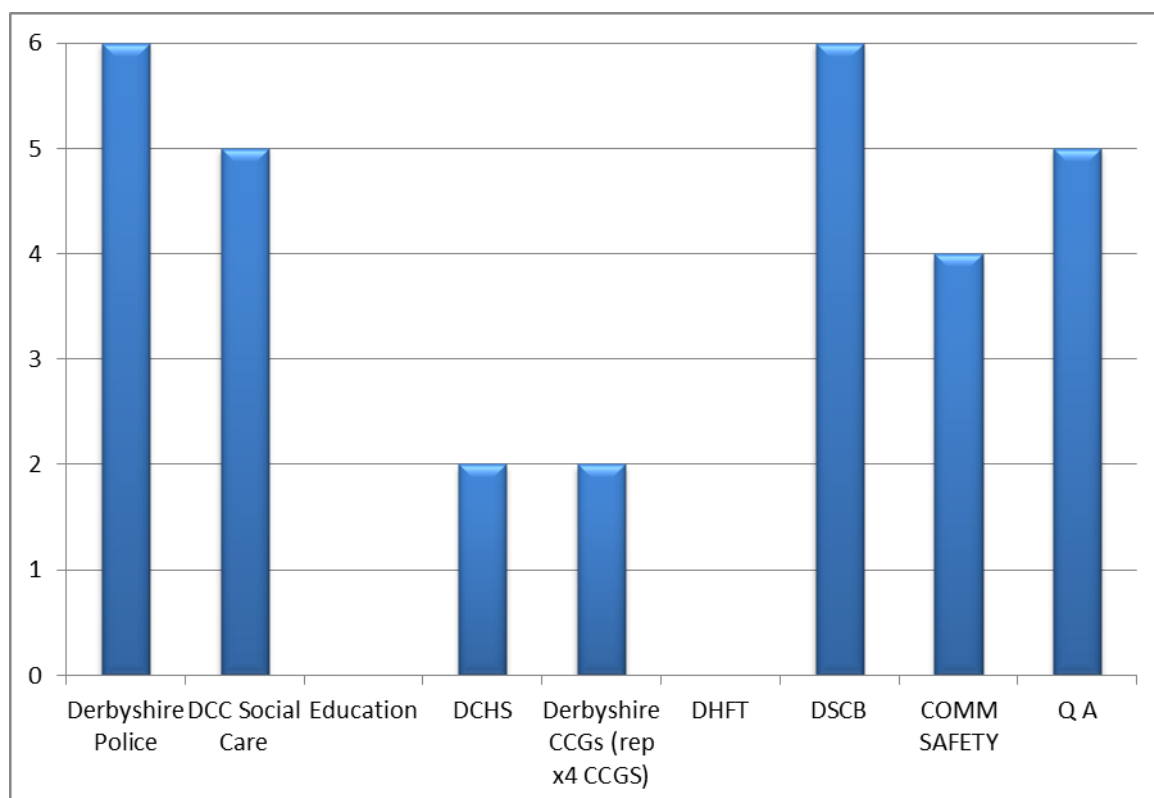
Policies and Procedures



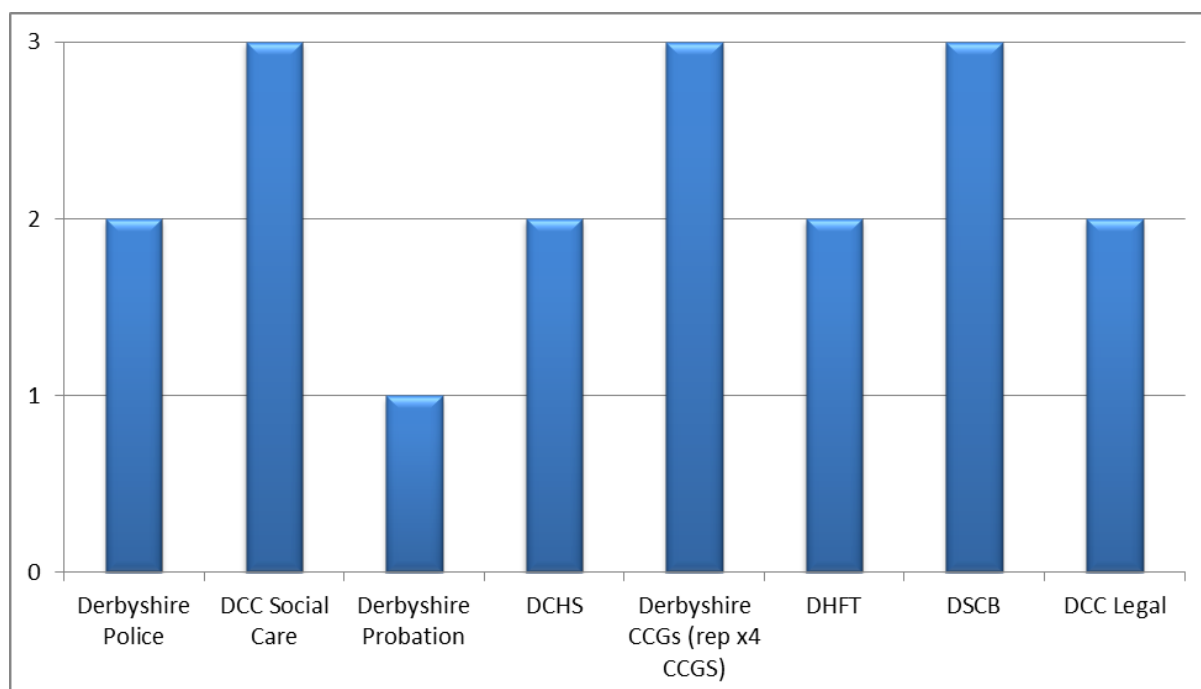
SCR Action Plan Sub Group



CSE Steering Group



Quality and Performance

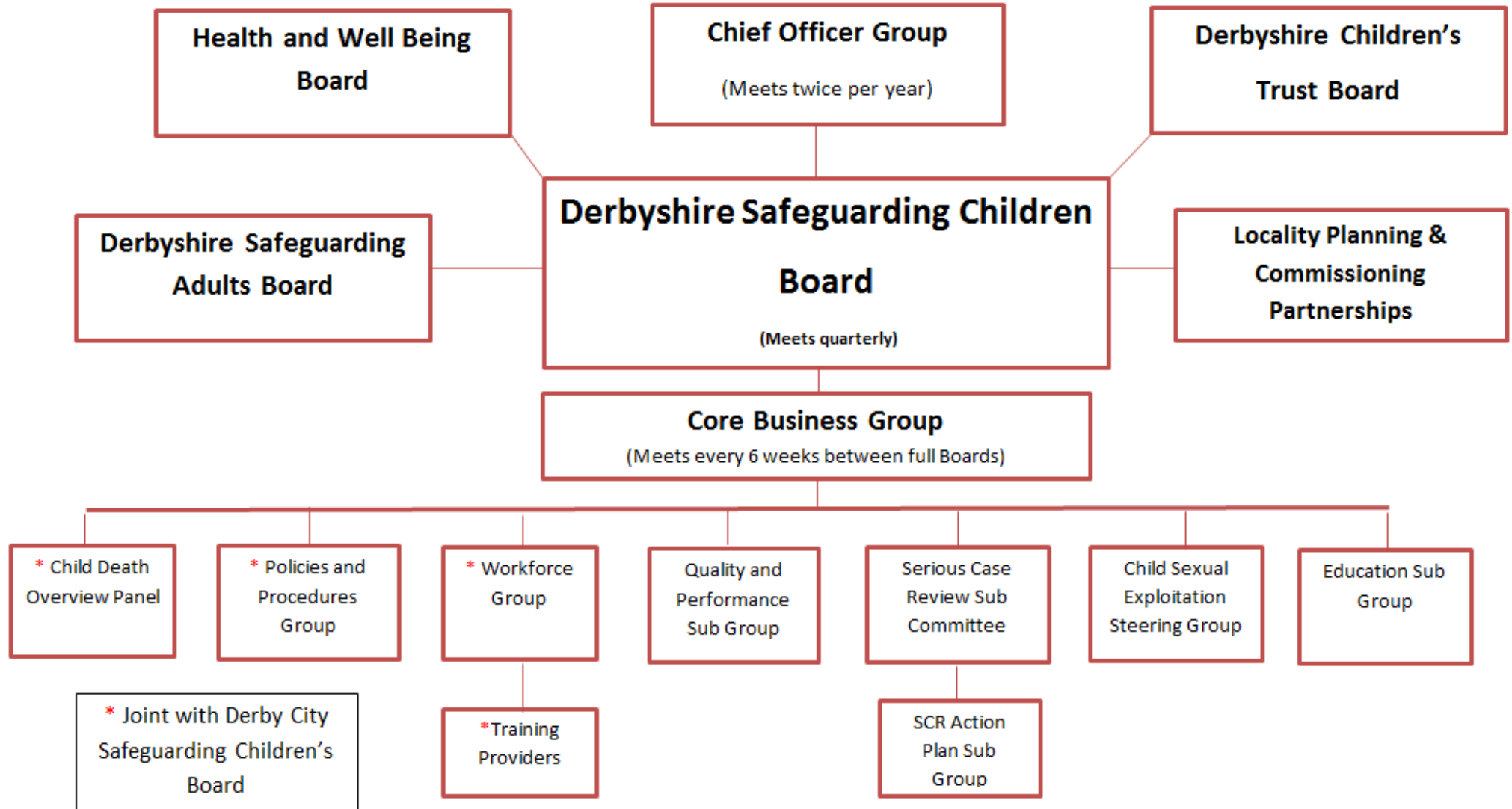


Appendix 2 Board Meeting Attendance Monitoring

n/a = not applicable (service not required to attend)

Meeting Name	Meeting Date	Derbyshire Police	DCC Social Care	DCC YOS	Derbyshire Probation	Education	DCHS	Derbyshire CCGs (rep x4 CCGS)	DHFT	DSCB	DCC Legal	Derbyshire Probation CRC	EMAS	CAFCASS	Derbyshire Fire and Rescue	Chesterfield Royal Hospital	Derby Hospitals	DCC Multi Agency Team	Erewash CCg	Tameside and Glossop CCGs	Lay Member	T3	DSCB TRAINING	COMM SAFETY	Q A
DSCB Full Board	19/06/2015																								
	18/09/2015																								
	11/12/2015																								
	18/03/2016																								
DSCB Core Business Group	07/05/2015			n/a	n/a	n/a	n/a		n/a		n/a	n/a	n/a	n/a	n/a	n/a	n/a	n/a	n/a	n/a	n/a	n/a	n/a	n/a	n/a
	13/08/2015	Meeting Cancelled												Meeting Cancelled											
	05/11/2015			n/a	n/a	n/a	n/a		n/a		n/a	n/a	n/a	n/a	n/a	n/a	n/a	n/a	n/a	n/a	n/a	n/a	n/a	n/a	n/a
	04/02/2016			n/a	n/a	n/a	n/a		n/a		n/a	n/a	n/a	n/a	n/a	n/a	n/a	n/a	n/a	n/a	n/a	n/a	n/a	n/a	n/a
DSCB SCR Sub Committee	19/05/2015													n/a	n/a	n/a	n/a	n/a	n/a	n/a	n/a	n/a	n/a	n/a	n/a
	16/07/2015													n/a	n/a	n/a	n/a	n/a	n/a	n/a	n/a	n/a	n/a	n/a	n/a
	01/10/2015													n/a	n/a	n/a	n/a	n/a	n/a	n/a	n/a	n/a	n/a	n/a	n/a
	03/12/2015													n/a	n/a	n/a	n/a	n/a	n/a	n/a	n/a	n/a	n/a	n/a	n/a
	27/01/2016													n/a	n/a	n/a	n/a	n/a	n/a	n/a	n/a	n/a	n/a	n/a	n/a
	24/02/2016													n/a	n/a	n/a	n/a	n/a	n/a	n/a	n/a	n/a	n/a	n/a	n/a
	23/03/2016													n/a	n/a	n/a	n/a	n/a	n/a	n/a	n/a	n/a	n/a	n/a	n/a
DSCB SCR Action Plans Sub Group	19/05/2015					n/a	n/a		n/a		n/a	n/a	n/a	n/a	n/a	n/a	n/a	n/a	n/a	n/a	n/a	n/a	n/a	n/a	n/a
	22/07/2015					n/a	n/a		n/a		n/a	n/a	n/a	n/a	n/a	n/a	n/a	n/a	n/a	n/a	n/a	n/a	n/a	n/a	n/a
	09/09/2015					n/a	n/a		n/a		n/a	n/a	n/a	n/a	n/a	n/a	n/a	n/a	n/a	n/a	n/a	n/a	n/a	n/a	n/a
	11/11/2015	Meeting Cancelled																							
	27/01/2016					n/a	n/a		n/a		n/a	n/a	n/a	n/a	n/a	n/a	n/a	n/a	n/a	n/a	n/a	n/a	n/a	n/a	n/a
Quality and Performance	11/05/2015			n/a		n/a						n/a	n/a	n/a	n/a	n/a	n/a	n/a	n/a	n/a	n/a	n/a	n/a	n/a	n/a
	August	Meeting Cancelled																							
	09/11/2015			n/a		n/a						n/a	n/a	n/a	n/a	n/a	n/a	n/a	n/a	n/a	n/a	n/a	n/a	n/a	n/a
	09/02/2016			n/a		n/a						n/a	n/a	n/a	n/a	n/a	n/a	n/a	n/a	n/a	n/a	n/a	n/a	n/a	n/a
Workforce Development	28/04/2015			n/a					n/a		n/a		n/a	n/a	n/a	n/a		n/a	n/a	n/a	n/a	n/a		n/a	
	14/07/2015			n/a					n/a		n/a		n/a	n/a	n/a	n/a		n/a	n/a	n/a	n/a	n/a		n/a	
	19/10/2015			n/a					n/a		n/a		n/a	n/a	n/a	n/a		n/a	n/a	n/a	n/a	n/a		n/a	
	25/01/2016			n/a							n/a		n/a	n/a	n/a	n/a		n/a	n/a	n/a	n/a	n/a		n/a	
Training Providers	19/05/2015			n/a		n/a					n/a	n/a	n/a	n/a	n/a	n/a		n/a	n/a	n/a	n/a	n/a	n/a	n/a	n/a
	08/09/2015			n/a		n/a					n/a	n/a	n/a	n/a	n/a	n/a		n/a	n/a	n/a	n/a	n/a	n/a	n/a	n/a
	24/11/2015			n/a		n/a					n/a	n/a	n/a	n/a	n/a	n/a		n/a	n/a	n/a	n/a	n/a	n/a	n/a	n/a
	23/02/2016			n/a		n/a					n/a	n/a	n/a	n/a	n/a	n/a		n/a	n/a	n/a	n/a	n/a	n/a	n/a	n/a
Policies and Procedures	22/04/2015			n/a									n/a	n/a	n/a	n/a		n/a		n/a	n/a	n/a	n/a	n/a	
	22/07/2015			n/a									n/a	n/a	n/a	n/a		n/a		n/a	n/a	n/a	n/a	n/a	
	04/11/2015			n/a									n/a	n/a	n/a	n/a		n/a		n/a	n/a	n/a	n/a	n/a	
CSE STEERING GROUP	05/05/2015			n/a	n/a								n/a	n/a	n/a		n/a	n/a	n/a	n/a	n/a	n/a	n/a		
	08/06/2015			n/a	n/a						n/a	n/a	n/a	n/a	n/a	n/a	n/a	n/a	n/a	n/a	n/a	n/a	n/a		
	07/08/2015			n/a	n/a						n/a	n/a	n/a	n/a	n/a	n/a	n/a	n/a	n/a	n/a	n/a	n/a	n/a		
	22/09/2015			n/a	n/a						n/a	n/a	n/a	n/a	n/a	n/a	n/a	n/a	n/a	n/a	n/a	n/a	n/a		
	18/12/2015			n/a	n/a						n/a	n/a	n/a	n/a	n/a	n/a	n/a	n/a	n/a	n/a	n/a	n/a	n/a		
	19/02/2016			n/a	n/a						n/a	n/a	n/a	n/a	n/a	n/a	n/a	n/a	n/a	n/a	n/a	n/a	n/a		
	14/03/2016			n/a	n/a						n/a	n/a	n/a	n/a	n/a	n/a	n/a	n/a	n/a	n/a	n/a	n/a	n/a		

DSCB structure October 2015



Appendix 1 – Derbyshire Safeguarding Board Membership

DSCB Membership 2016	
Member	Role
Chris Cooke	Independent Chair - DSCB
Jane Lakin	Board Manager - DSCB
Alistair Langton	Derby Diocesan Youth Adviser
DS Kem Mehmet	Head of Public Protection, Derbyshire Constabulary
Heather Summers	Head of Housing Services- Rykneld Housing
Heidi Scott Smith	Chief Nurse & Director of Quality Erewash CCG
Karen Barden	Acting Children's Services Head of Child Protection DCC
Lynne Greenhough	Headteacher - Primary Schools Rep
Lisa Walton	Headteacher – Secondary Schools Rep
Carolyn White	Director of Quality/Chief Nurse DCHS
Jane Parfremment	Director of Children's Services - DCC
Janice Ward	Service Manager - CAF/CASS
Jayne Stringfellow	Chief Nurse and Quality Officer NHS North Derbyshire CCG
Jim Connolly	Chief Nurse - Hardwick CCG
Karen MacLoed	Head of National Probation Service Derbyshire LDUs
Shelia Wright	Assistant Chief Executive of the DNLR CRC
Kathy Webster (Vice Chair of the DSCB)	Consultant/Designated Nurse Safeguarding Children Derbyshire County
Natalie Amey	DCC Legal – Principle Solicitor
Lynn Woods	Chief Nurse – Southern Derbyshire CCG
Ali Noble	Acting Service Director for Early Help and Safeguarding - DCC
Hazel Chamberlain	Lead Designated Nurse Safeguarding – Tameside & Glossop CCG
Dr. Munera Khan	Designated Paediatrics Doctor - Tameside & Glossop CCG
Dr. Patricia Field	Designated Doctor for Safeguarding Children – Derbyshire County
Peter Bainbridge	Derbyshire Representative EMAS
Dave Bond	Head of Youth Offending Service - DCC

DSCB Membership 2016	
Member	Role
Carolyn Green	Director of Nursing and Patient Experience DHCFT
Alex Johnson/ Davinder Johal	Head of Prevention & Inclusion Derbyshire Fire Service
Councillor Jim Coyle	Lead Member DCC
Cathy Winfield	Executive Director of Patient Experience and Chief Nurse Derby Teaching Hospitals
Lynn Andrews	Director of Nursing & Patient Care – Chesterfield Royal Hospital
David Peet	Chief Executive - Office of the Police and Crime Commissioner
James Drury	Executive Director of Chesterfield Borough Council
Alison Pritchard	Consultant in Public Health- DCC
Jenny Tilson	Director Of Nursing & Quality – Derbyshire Health United
Lay Members	
Miry Gosling	Lay Member
Stephanie Marbrow	Lay Member

ⁱ Published on 16.03.16 by Derbyshire County Council. This report is available at
https://observatory.derbyshire.gov.uk/IAS/Custom/Resources/HealthandWellbeing/SoD_2015.pdf