

# One Public Estate Derbyshire

Presentation by Matthew Scarborough



Cabinet Office



# Background

- Pioneering initiative funded by
  - Cabinet Office
  - Government Property Unit (GPU)and delivered **in partnership with the Local Government Association (LGA)**
- **One Public Estate supports the public sector to use its combined assets to deliver integrated services resulting in people focused services and innovative working practices for staff.**
- OPE initiative for this part of the country is the **North Midlands area** – “coalition of the willing” across Derbyshire & Derby City and Nottinghamshire and Nottingham City.

# Four Main Objectives



**Create economic Growth** – to enable released land and property to be used to stimulate economic growth and regeneration e.g. housing and jobs.



**Deliver more integrated and customer focused services** – co location, service efficiencies and work towards a more customer focused service delivery.



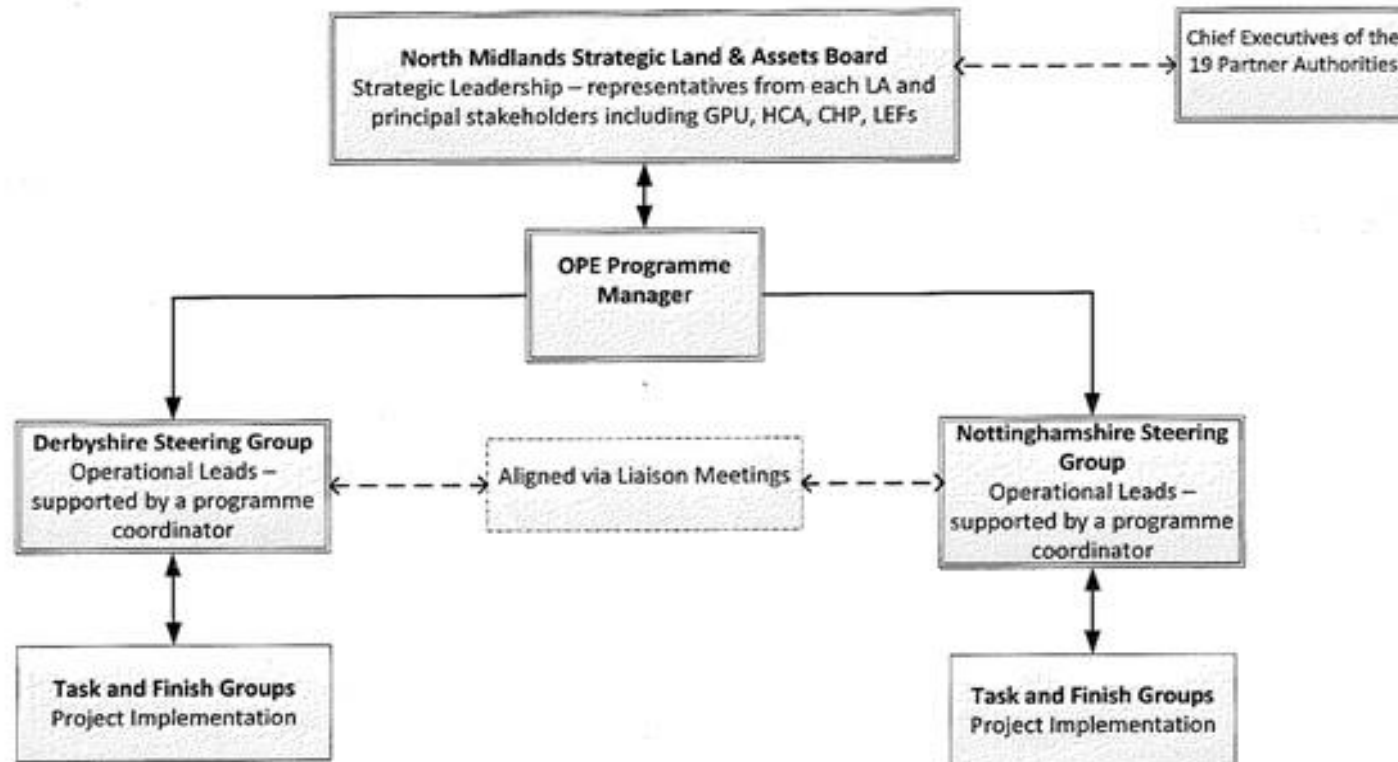
**Generate Capital Receipts** – to release land and property to generate capital receipts.



**Reduce running costs** – to reduce the running costs of central and local government assets.

# The North Midlands OPE - Operating Model

## Governance Arrangements for North Midlands One Public Estate Programme



One Public Estate

Derbyshire

*“Improving the value of our estate”*

## **The Vision**

**“A collaborative and co-ordinated programme, delivering a public sector asset base across Derbyshire, which is realigned, rationalised and redeveloped to provide regeneration, financial benefits and joined up public services”**

# Transformation and Innovation

- Thematic Projects

- Locality Reviews
- Operational Reviews

- Specific Projects

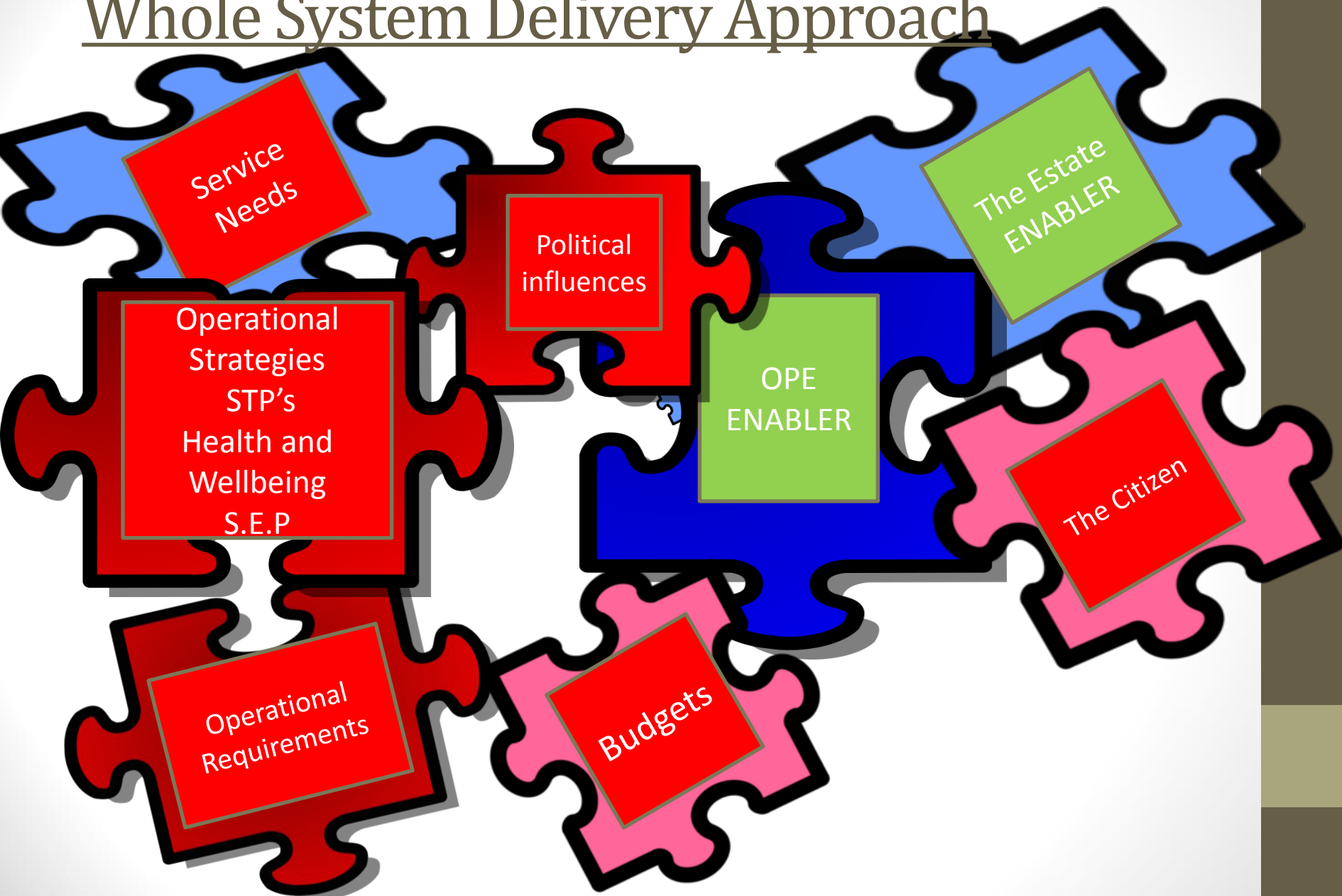
- **Chesterfield** Locality Review
- **Amber Valley** Locality Review
- **Clay Cross Town Centre**
- **Buxton** Locality Review
- **Shirebrook** Locality Review
- **Depot Review**

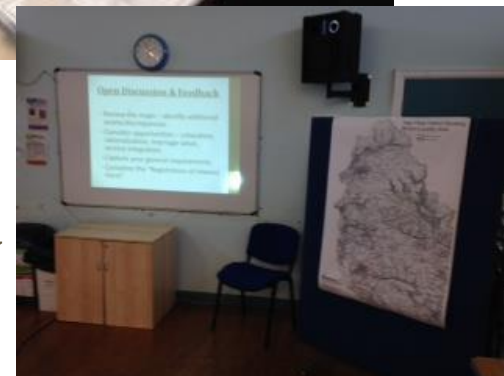
## Main Drivers

- ✓ Service Plans
- ✓ STP's ( NHS)
- ✓ Health and Wellbeing
- ✓ Social Care
- ✓ Budgets
- ✓ Opportunities



# Whole System Delivery Approach





## Buxton Locality Review Workshop





## Bulwell Joint Service Centre

Nottingham City Council – Safeguarding, Children's Services, Youth , M.A.T, Library

NHS – Health Provision

CCG'S – GP'S/ Dental Practice

Café

Ask Here – Service

Administration

Police – Safer Neighbourhood Team/Child Protection



**Question**  
**How can this initiative assist in delivering our service plans and future objectives?**

