

DERBYSHIRE COUNTY COUNCIL

CABINET

24 MAY 2016

Report of the Strategic Director for Children's Services

The Aiming High Derbyshire Offer – (Children's Services)

1. Purpose of the Report

- To inform Cabinet of the outcomes of the consultation on proposals to cease the Aiming High Derbyshire Offer
- To seek approval from Cabinet to proceed with the implementation of proposals to cease the Aiming High Offer and to provide short break services to eligible families only following a formal assessment that identifies that additional services are necessary.

2. Information and Analysis

2.1 Background and Context

The report to the Cabinet meeting held on 26th January 2016 detailed the factors affecting the Council's position with regard to funding and the pressing need to make further cuts as a result of the significantly reduced Children's Services budget which could ultimately reduce to circa £70 million, around half of the 2010-11 budget. Consequently, the Service has no alternative but to consider implementing savings in key service areas.

The Council appreciates that families have benefitted from the provision made available through the Aiming High Offer, however the Council will need to determine which services it can continue to provide and which it can no longer afford to. It is with reluctance that further consideration is given to the provision of services to disabled children and young people and their families for whom there has not been the formal identification of the level of need.

It is important to note that the pressing financial position is the driver for the changes set out in this paper; the services themselves are of a high quality and are valued by service users.

There will be potential staffing implications within the Business Services Job Family, however given the grade and hours it is envisaged that the Council's Redundancy, Redeployment, Protection of Earnings and Buy-out of Hours Policies will be adhered to and any displaced staff will be successfully redeployed. The ceasing of the Aiming High Offer would mean this function of processing applications is no longer required. Families in need of additional support would be referred for Early Help through Starting Point.

2.2 Short Breaks for Carers of Disabled Children

Derbyshire currently offers a menu of short break provision. 'Aiming High' short breaks currently form one strand of the wider short breaks offer. The short breaks offer was developed as a result of increased funding that was made available to Local Authorities. This was used to increase the range of short break services, including the 'Aiming High' offer and a number of Social Care services for families. This funding is no longer ring-fenced and has been subsumed into the main Council funding which has subsequently been significantly reduced.

The current budget for services provided as a result of an assessment conducted by social care is in the region of £3.6 million. The limitations of the Children's Services budget are such that priority must be given to ensuring that these resources can continue to provide support to those families with the most significant needs.

Short breaks are intended to give:

- Disabled children and young people enjoyable experiences away from their primary carers, thereby contributing to their personal and social development and reducing social isolation;
- Parents and families a necessary and valuable break from caring responsibilities.

There have been two prior consultations proposing changes to the Aiming High Offer; the most recent took place between 17th August and 6th November 2015. Agreement at the Cabinet meeting held on 26th January 2016 resulted in a reduction to the Aiming High offer. The following were implemented from 1st April 2016:

- The current criteria for families to access Aiming High flexible one-to-one support, without the need to request an assessment by MATs or Social Care was retained.

- The maximum hours available to families was reduced from 80 to 40 per year;
- Families continued to have the option of choosing a short break grant as an alternative to one-to-one support; however the maximum grant was reduced from £800 to £400 per year.
- The annual budget for group activities was reduced from £300,000 to £150,000.

It was also agreed that, as a result of the pressing financial situation, a further consultation would take place on proposals to cease the Aiming High offer and to only provide short break services following a formal assessment that identifies additional support is necessary. With the potential for further changes to be implemented from 1st October 2016 the revised Aiming High Offer was pro-rata'd for the period April 2016 to September 2016 and provider contracts were extended until 30 September 2016 with variations reflecting the reductions.

The current short breaks offer complies with the relevant statutory requirements and if the proposals were to be implemented, the Local Authority would continue to comply with the Short Break Regulations 2011. The Regulations do not require that Local Authorities provide access to short breaks without an assessment, although this is recommended as good practice. If the proposals were implemented, there would continue to be access to some universal short break provision in Derbyshire without an assessment, including the Council's Youth Service provision.

2.3 Outcomes of the Consultation

Formal consultation took place between 19th February and 29th March 2016 on proposals that, if implemented, would cease the Aiming High Offer and provide short break services to eligible families only following a formal assessment that identifies that additional services are necessary. The consultation report is provided as Appendix 1 of this paper.

Consultation aimed to encourage as many people as possible who may be affected by the proposals to give their views. Over 1,000 families were contacted and 64 individual responses were received. There were no responses to the offer made to young people to give their views face to face.

- All families known to be accessing Aiming High were sent a letter informing them about the consultation and how to respond and offering support to help their child or young person to give their views directly.
- Young people aged 16 years and over who use Aiming High were sent a letter informing them about the consultation and how to respond and offering support to help them give their views

- Key stakeholders, such as, Aiming High providers, schools, colleges, GP surgeries, Children's centres, Derbyshire Parent Carer Voice etc. were written to and requested to publicise the consultation.
- Further information was located on the Derbyshire website with access to the online consultation.
- Alternative methods of responding were made available using Call Derbyshire
- Paper versions of the consultation were available on request.

The feedback can be summarised as follows:

- The number of responses was lower than the previous consultation; 103 responses were received during the consultation held between August – November 2015, compared with 64 responses to this consultation. This is likely to be because of the proximity of the two consultations.
- The majority of the responses were dissatisfied with the proposal to stop the Aiming High offer and to only provide short breaks following an assessment.
- Those expressing dissatisfaction were most likely to be affected by the proposals.
- 67% of responses were dissatisfied with the proposal to no longer provide activity weekends, however, 67% said that they would not be affected by this proposal.
- There was concern that a reduction in short breaks would increase family stress and, in some instances, lead to an increased demand on other Council budgets.
- There was concern that disabled young people would have fewer opportunities to experience friendship and social groups, resulting in social isolation.
- In response to the question of how the impact of the proposals might be lessened, the theme of the responses was opposition to any removal of services to disabled children and that savings and efficiencies should be made elsewhere. There were also suggestions that families should have the option to contribute financially towards activities, limiting free access, offering a reduced service, consider fundraising or running council-led groups.
- It was clear from the comments made that those using the services valued this support.

In response to the main points described above, it is understood that some current users will no longer receive a service as a result of these proposals; however, those families whose needs cannot be met through universal or other provision would be able to request an assessment in order to identify the appropriate type and level of support needed.

The Derbyshire Local Offer website provides a range of information about activities and clubs accessible to disabled young people. In addition to the range of specialist activities provided by the Voluntary Community and Independent sector, Derbyshire County Council currently has eight specialist youth groups, located throughout the County, offering opportunities to disabled young people. In response to concerns that disabled young people would have fewer opportunities to experience friendship and social groups as a result of the proposal to cease the Aiming High offer the potential for attendance at these groups should be explored. Attendance figures indicate that there is potential capacity within these groups for some young people using, or previously using, Aiming High. Attendance at these groups tends to be static; some young people continue to attend well into their twenties. Further capacity could be created through supporting older young people to move onto other adult opportunities. Consideration of additional training for the staff providing these groups could lead to further inclusion. These groups are currently part of the Locality based Youth Offer.

Derbyshire County Council is currently inviting applications for the Youth Action Grant, up to £1,000 to organisations proposing projects that will contribute to the achievement of the children and young people well-being priorities.

Families can, if they have funds available, purchase additional support or activities from current Aiming High providers as well as other providers.

There has not, to date, been a notable increase in requests for assessments and services following the reduction to the Aiming High offer. There will be a cost associated with any additional assessment; however, a formal assessment would ensure that limited resources are targeted on families with an identified need and that support is proportionate to need and is monitored and reviewed as circumstances change.

The processes resulting from the introduction of the SEND Reforms continue to evolve. It is anticipated that new structures and processes will eventually lead to a single approach and reduce the need for separate assessments.

The SEND reforms require that there is a greater focus on preparing young people with special educational needs and disabilities for adult life. It is expected that planning for individual young people will address some of the concerns raised during the consultation; specifically how young people with special educational needs and disabilities can develop and be supported to socialise, access their local community, engage in ordinary activities and become more independent.

Cabinet will want to consider the findings of the consultation report in conjunction with the Equality Impact Analysis.

2.4 Equality Analysis

An Equality Analysis (EA) has been completed to consider the potential impact of the proposed changes and the extent to which any adverse impact could be mitigated and is available as Appendix 2 of this report.

EA Summary

The proposals will have an adverse effect on families currently accessing Aiming High; some families will no longer be eligible for short break services and will be signposted to other provision or sources of information. Whilst not alleviating the full impact of these proposals for all families, eligible families seeking support can request a formal assessment from Children's Services. An assessment would take account of individual family circumstance and identify the nature and level of support required.

Analysis of users of Aiming High identified that a significant proportion live in the most deprived areas of Derbyshire. The reduced offer is likely to have an impact on those families; however, the individual circumstances of those families may vary significantly. Triaging and formal assessment processes will facilitate better understanding of the needs and circumstance of individual families.

Feedback from users of Aiming High support is in the main positive, however, a detailed analysis of the outcomes and benefits to individual young people and their families is limited by the current process which does not require a formal assessment to identify individual needs and systematic review of progress.

Families have expressed concern about the potential loss of one-to-one support and the impact on the positive relationship that has developed between the support worker and the child/young person. Where a young person is assessed as needing one-to-one support families would have a choice of providers, however, continuation of the same personnel can never be guaranteed.

Families have identified the main benefits of the Aiming High offer as: a chance for carers to recharge and spend time with other children and for their disabled child/young people to engage in social activities. As detailed in the previous section; specialist youth groups are likely to have capacity, enabling more disabled young people to engage in those groups and families and those advising and supporting them will be encouraged to make full use of

opportunities provided by the voluntary and independent sector and detailed on the Derbyshire Local Offer.

Whilst the Council holds a wide range of data about the number of children and young people with special educational needs and/or disabilities in Derbyshire and their needs, there is relatively little detailed information about the specific individual needs and circumstances of children and young people benefitting from Aiming High short breaks and their families. This is because access to Aiming High short breaks does not require a formal assessment of need. An assessment would better identify the specific nature and level of any necessary support, tailor support to meet identified needs, enable better monitoring of progress towards identified goals and ensure that, where possible, young people move on to access other universal and targeted activities without the need for one-to-one support. Formal assessment would better ensure that limited resources are targeted at those with greatest need.

It is proposed that families seeking support would utilise current Derbyshire assessment processes; referrals for Early Help would be made through Starting Point. Children and young people with more complex needs may need the specialist support provided following a social care assessment. This approach would provide a single pathway for accessing support, however, it can be assumed that not all current users of Aiming High provision would be eligible for a short break services.

All universal services have a duty to ensure that they are accessible to disabled children and young people. Universal services can act in a preventative way, reducing the demand for specialist short break services. The Council will continue to review the Derbyshire Local Offer to ensure families have access to information about short break opportunities that would not require additional assessment by the local authority.

It is considered that even after the proposed changes the Council will continue to comply with its statutory obligations.

The Derbyshire Short Breaks Services statement will need to be reviewed in order to incorporate any changes.

5. Financial Considerations

5.1 A summary of the anticipated savings

The figures below are based on implementation of the proposals to cease the Aiming High offer from 1 October 2016:

	2014-15 actual spend	2015-16 Budget	2016/17 Budget for 6 months delivery	2016/17 Savings compared to actual spend in 2014-15	2017/18 Savings Compared to 2016-17: if no budget is allocated for Aiming High
Groups and 1:1 contracts	519,333	645,946	165,563	353,700	165,563
Grant	375,462	320,000	93,900	281,562	93,900
Activity weekends	88,056	77,414	44,028	44,028	44,028
TOTAL	982,851	1,043,360	303,491	679,290	303,491

The above table represents maximum savings in 2016-17 and 2017-18. If the proposals were to be implemented, the actual savings would be net of:

- i) Any additional cost of assessment, as there would likely be an increase in the number of requests for assessment;
- ii) The cost of any short break provision agreed following an assessment of need; and
- iii) The CCGs' financial contribution of £39,445**

**Note: The Derbyshire Clinical Commissioning Groups contribute £39,455 per year to the budget for Aiming High short breaks. The CCGs will need to consider the level of their financial contribution for the provision of short breaks for 2017-18.

6. Legal and Human Rights Considerations

The Council has invited all those whose service may be significantly affected by proposals to respond to the consultation. The resulting report is available as an appendix to this document.

In respect of the proposals an Equality Impact Analysis has been carried out and is included in the report at Appendix 2. Members will wish to carefully consider any potential detriment on protected groups, particularly in relation to the Council's disability equality duty, under the Equality Act 2010. Cabinet Members must carefully consider the findings of this analysis as well as the consultation report with a view to considering whether in light of them it should

go ahead at all or if further mitigating steps or monitoring should be put in place prior to making its' decision on this issue.

Members will also wish to be satisfied that the proposals are compliant with the Local Authority's duties under the Children Act 1989, the Children and Families Act 2014 (which defines and prescribes the content of the 'Local Offer'), the Breaks for Carers of Disabled Children Regulations 2011, the Special Educational Needs and Disability Regulations 2014 and associated guidance.

The Short Break Regulations 2011 require that Local Authorities provide, as part of the range of services they offer to families, breaks from caring for the carers of disabled children to help them continue to care for their children at home and allow them to do so more effectively. The regulations require Local Authorities to:

- Ensure that they have regard to the needs of different types of carers, not just those who would be unable to continue to provide care without a break;
- Provide a range of breaks, as appropriate, during the day, night, at weekends and during the school holidays; and
- Provide parents with a short break statement detailing the range of available breaks and any eligibility criteria attached to them.

Article 8 of the Convention on Human Rights provides for a (qualified) right to family life and to a private life. Cabinet will wish to consider any implications this may have on the proposals.

There is a business services resource which supports the administration of Aiming High requests. It will be necessary, therefore, to redeploy the resource into alternative duties. It is anticipated that this will be achievable. If this is not possible a further report will be submitted to CabCo seeking approval to instigate a redundancy process. Informal consultation with the affected employees has already taken place and subject to approval of this report, formal consultation will commence.

7. Human Resources Considerations

The Council will seek suitable alternative employment in line with the provisions set out in the Council's Redundancy, Redeployment, Protection of Earnings and Buy-out of Hours Policies.

8. Other Considerations

In preparing this report the relevance of the following factors has been considered: prevention of crime and disorder, equality of opportunity; and environmental, health, human resources, property and transport considerations.

8. Key Decision

Yes

9. Call in; is it necessary to waive the call-in period?

No

10. Officer Recommendations

It is recommended that Cabinet:-

- Approves the proposal to cease the Aiming High Offer with effect from 1st October 2016 and provides short break services to eligible families only following a formal assessment that identifies that additional services are necessary.
- Agrees to a review of the current DCC specialist youth provision in order to determine effective use of resources and make recommendations for the future.

Jane Parfrement
Strategic Director for Children's Services

CONSULTATION REPORT ON THE AIMING HIGH DERBYSHIRE OFFER

1. Purpose of Report

This report outlines the process and feedback received from the consultation held between 19th February 2016 and 29th March 2016 on proposals that, if implemented, would cease the Aiming High Derbyshire Offer.

A report was presented to Cabinet on 26th January 2016 to:

- Inform Cabinet of the outcomes of the consultation held between 17th August and 6th November 2015 on proposals to reduce the Aiming High Derbyshire Offer from 1st April 2016 and to seek approval to proceed with the implementation of those proposals
- And, in the light of continuing financial pressures, to seek agreement to consult on proposals that would, if implemented, result in short break services being provided to eligible families only following a formal assessment that identifies that additional services are necessary.

Cabinet decision was to implement a reduced Aiming High Offer from 1st April 2016 and a further consultation took place between 19th February and 29th March 2016 on proposals to cease the Aiming High Offer.

2. Methodology and Approaches

Formal consultation on the proposed changes took place between 19th February and 29th March 2016. This report will summarise views, opinions and suggestions submitted by respondents to the consultation.

The consultation used a mixed method approach by offering both qualitative and quantitative ways to gather responses on the proposed changes. Officers planned for as many people as possible to take part by offering a range of ways in which people could share their views:

- i. Current Aiming High providers and service user families were written to and invited to respond to the online consultation. They were informed that alternative methods were available through Call Derbyshire: callers could request a paper copy of the questionnaire, with a free post return address, or provide their responses directly on the telephone. There were 64 responses in total: the responses are summarised in this report. The geographical locations of those that responded and response graphs showing the number of responses can be found at Appendix A.

- ii. The Council was keen to ensure that children and young people who access Aiming High services had opportunities to give their views whilst recognising that the complexity of the proposals might result in some children/young people needing assistance in either understanding the proposals or formulating a response. Included in the letter to families was an invitation to inform the Council if their child or young person would like to give their views face to face. Contact details were provided in order that families could email details of the school or groups that their young person attends in order to facilitate face to face consultation. The council planned to consult directly with willing young people with support provided from Derbyshire County Council's Participation and Disability and Inclusion Services. The plan was to carry out personalised consultations in a range of specialist provisions where the children/young people would feel at ease and be supported by staff familiar to them and with their needs: this included specialist youth groups, special schools and commissioned providers. No families responded to this request.
- iii. Service users who were aged 16 years and over were directly written to and invited to respond to the online consultation. They were also informed of the alternative methods available to enable them to respond by using Call Derbyshire. In addition, they were also invited to inform the council if they would like to give their views face to face. Contact details were provided in order to provide details of their school or college. No young people responded to this request.
- iv. In order to reach as many interested parties as possible the consultation was publicised widely; letters and posters were sent to Derbyshire GP surgeries, Libraries, schools, colleges and children centres who were asked to display posters in prominent areas.
- v. Information on the consultation was also made available to parents by Derbyshire Parent Carer Voice, the internet and other interested parties who were encouraged to give their views by taking part in the online consultation.
- vi. People were directed to the Derbyshire webpage which provided additional information and access to the online consultation.

Consultation Summary

In the region of 1000 families were contacted, including all current and recent users of the service. There were a total of 64 responses gathered from the online consultation, including those recorded through Call Derbyshire. 41 paper questionnaires were sent on request but zero responses returned.

Q1. How satisfied or dissatisfied are you with the proposal to stop the Aiming High Derbyshire Offer and to only provide short break services after the completion of an assessment that identifies the nature and level of support that is needed?

Satisfied: 17% of the respondents were satisfied with the proposal to cease the Aiming High Derbyshire Offer and to only access short break services after the completion of an assessment identifying the nature and level of support needed. The majority of the respondents who were satisfied stated that they would not be affected by the proposal. The few comments available from those respondents confirming they would be affected by the proposal identified that they had not accessed short break services, some raised a concern that parents would need to rely on others to act as a carer in order to have a break.

Dissatisfied: 72% were dissatisfied with the proposal. The majority of the respondents who were dissatisfied with the proposed stated that they would be affected. Comments reflected a view that the proposal would lead to increased family anxiety with an impact on quality of life; affecting the service user and the whole family. Concerns included the potential for increased social isolation and a reduction in child/young person's independence and no respite for the rest of the family.

5% of the respondents were neither satisfied nor dissatisfied.

6% of the respondents chose not to reply

Q2. Would you be affected by this proposal?

56% of all the respondents stated they would be affected by the proposal to cease the Aiming High Derbyshire Offer and to only access short break services after the completion of an assessment identifying the nature and level of support needed.

36% of all the respondents stated they would not be affected by this proposal.

8% of all the respondents chose not to reply

Q3. If yes, how would you be affected?

Example comments as follows:

- It would be a massive loss for my whole family. I am a single mum with 2 children one who has complex needs without the support of Aiming High the whole family would suffer.
- I have a disabled son but have not used this service
- It allows persons with disabilities to get out and interact with society, not an opportunity always available, and something that can be difficult for parents alone.

- Without short breaks I would not be able to cope with my child and would need to contact social care for respite care or would have to give my child up for the local authority to care for.
- Caller has 7 year old daughter with cerebral palsy awaiting assessment for autism. Slow processing delay with bad eyes. DCC haven't thought about impact on children. She has a one to one carer who she trusts and who provides continuity. She doesn't have the short break services.
- A Child I childmind will certainly suffer with his social skills and he will become trapped in his own disability.
- A child related to me would lose these valuable services which both give the child and also their parent/guardian much needed respite and invaluable life experiences for the child which enhance their life situation. there must be another service not as essential to these children's' wellbeing
- My severely disabled son would not get the opportunity to experience new things
- My son benefits from his one to one so much. I feel it is a vital service he must not lose
- Yes I would be affected because it gives me a break when my son gets help from Aiming High as I have a disability too and it gives me chance to spend time with the other children of the family

Q4. How satisfied or dissatisfied are you with the proposal to no longer provide Aiming High activity groups for disabled children and young people?

Satisfied: 17% were satisfied with this proposal. Some responses identified satisfaction with the proposal but commented that the proposal resulted in limited group availability and could present problems with isolation.

Dissatisfied: 67% of the respondents were dissatisfied with this proposal. The majority of the respondents who were dissatisfied with the proposal stated they would be affected. Many respondents commented that by no longer providing Aiming High activity groups, this would impact on friendships and social groups and increase social isolation. Concerns were raised that there would be a lack of suitable group provision and the impact on quality of life this proposal would have on the whole family as well as the service user, some referencing an impact on future development.

5% of the respondents were neither satisfied nor dissatisfied.

11% of the respondents chose not to reply

Q5. Would you be affected by this proposal?

53% of all the respondents stated they would be affected by the proposal to no longer provide Aiming High activity groups for disabled children and young people.

38% of all the respondents stated they would not be affected by this proposal.

9% of all the respondents chose not to reply

Q6. If yes, how would you be affected?

Example comments as follows:

- If my daughter moved on from 1 to 1 support this would be her next goal.
- There are hardly any places now for disabled children to take part in activities as many have closed due to funding.
- No group activities for my child.
- My son uses his 1:1 support for these group activities. They are his only social outlet outside school. Cutting them shows a lack of understanding of how difficult it is for disabled children participate in mainstream activities like scouts who don't have the same training and experience with disabled children where the gap in understanding and communication abilities is too great between children with learning disabilities and their peers, making it hard for them to join in even with 1:1 support.
- By taking a child's access to Aiming High and the benefits it brings in behaviour socialisation etc.
- My son has 1-1 support within the group provision, to be able to do things the same as a normal teenager e.g. going bowling with other teenagers, his brother gets to spend time with me with 100% of my attention and I get to recharge my batteries. So we would all be greatly affected.
- Again we have benefitted from this support. It has encouraged our child to socialise more readily and take part in activities he would ordinarily not be able to cope with
- Children with special needs find it impossible to access activities without special provisions in place
- My son would not be able to experience activities his peers take for granted or participate in social interaction with children his own age group, this would lead to him becoming isolated as he find keeping friends difficult, this in turn will impact on his self-esteem and already suffering emotional and mental wellbeing. This would impact on myself as his carer and his twin sister who already takes a back seat because of his complex needs.
- You are taking away vital opportunities for disabled kids to learn to be independent of their parents. This is short-sighted, counter-productive and will lead to more expense in the long term as these kids will need more support as adults.

Q7. How satisfied or dissatisfied are you with the proposal to no longer provide Aiming High activity weekends?

Satisfied: 14% were satisfied with this proposal to no longer provide Aiming High activity weekends. All these respondents stated they would not be affected by the proposals.

Dissatisfied: 67% were dissatisfied with the proposal. Many respondents stated that this proposal would result in an increase on family/child stress and impact on their quality of life as families depend on activity weekends for the break and may remove opportunities for weekend breaks with their other children.

8% of the respondents were neither satisfied nor dissatisfied.

11% of the respondents chose not to reply

Q8. Would you be affected by this proposal?

22% of all the respondents stated they would be affected by the proposal to no longer provide Aiming High activity weekends.

67% of all the respondents stated they would not be affected by this proposal.

11% of all the respondents chose not to reply

Q9. If yes, how would you be affected?

Example comments as follows:

- Not affected
- Our only chance to have a break away from our child for an extended period of time has been taken away.
- Cutting these services to the disabled is removing things that help not only the children but also their parents and carers
- We didn't access these as they weren't appropriate for my daughter.
- These are a life line for my family as it gives me chance to spend quality time with my disabled son's sibling as well as recharging my batteries and allowing us to carry on again. Alongside this my son enjoys the activity weekends where he can participate in, and experience activities not normally available to him.
- We are currently eligible to two weekends a year which provides valuable respite for us and our other child but also valuable time for our disabled son to gain independence and enjoy time with peers
- It allows us to have respite & get some sleep!
- No breaks for either child, separately or together and no respite whatsoever for parents.
- Our adopted twins, both diagnosed with severe learning disabilities, need these services to give them independent breaks from both their

parents and families. Without such breaks tensions between siblings will increase stress. Disabled children with learning disabilities, often suffer with behavioural issues. These issues will become more common.

Q10. Do you have any suggestions how we might reduce or lessen the effect that these proposals might have on families with disabled children and young people?

There was a theme throughout respondent comments opposing any removal of services in general. However, a range of suggestions on how the Council may reduce or lessen the effect of these proposals on families was presented.

There were suggestions regarding financial initiatives which included families having an option to contribute financially towards the support given and limiting free access, with some recommendations that this should be means tested. To offer a reduced service by simplifying the activities or restrict funding to regular weekly activities and limit groups during holidays and offering a more cost effective service; alternatively consider fundraising or running council led groups.

Additional suggestions were for support to be accessed by families that have undergone a formal assessment and identified as needing the support, focussing on those with needs but including those with needs that fall below the social care threshold and ensuring families are signposted to all support services available to them.

11. Do you have any other comments to make or alternative suggestions for how the Council can make savings?

There were a range of suggestions for alternative ways the Council might achieve savings, predominately by making the savings from other budgets or sourcing funds from alternative services, with the Council working more efficiently by reducing bureaucratic processes or pooling resources and sharing good practice across different councils. There was a general theme that savings should not be made by reducing short break provision.

Other suggestions were; to increase volunteers to support group attendance, raise Council Tax charges, turn street lights off over night or sourcing grant opportunities to fund short breaks. Other suggestions were to tailor support hours to an individual's level of need or only provide statutory services.

50% of the responses in this final section expressed the view that the proposals will affect vulnerable children and that the overall resource for disabled children and their families should not reduce.

Conclusions

Consultation was comprehensive and aimed to encourage as many people as possible who may be affected by the proposals to give their views. Over 1000 families were contacted and 64 responses were received.

The feedback can be summarised as follows:

- There was significant opposition to ceasing any support for disabled children and their families as this could escalate family stress and, in some cases, lead to an increased demand on other Council budgets.
- Concerns were raised that ceasing support will result in reduced opportunities for disabled children to experience friendship and other social groups and an increase of social isolation.
- Many respondents expressed a view that savings could be found in other Council budgets instead of services for disabled children.
- The Council should consider alternative ways of working to ensure efficiency.
- Suggestions included financial initiatives, simplifying activities offering a more cost effective service and consider alternatively means to funding services.

Aiming High Consultation 2016 – 1st April 2016

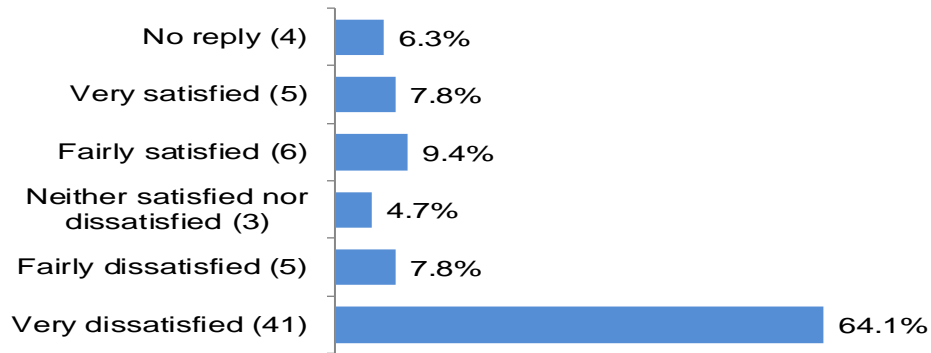
This report was generated on 01/04/16. Overall 64 respondents completed this questionnaire. The report has been filtered to show the responses for 'All Respondents'.

As questions 3, 6, 9, 10 and 11 required a narrative response they are not represented in graph form below, however, examples of responses can be found in the main body of this report.

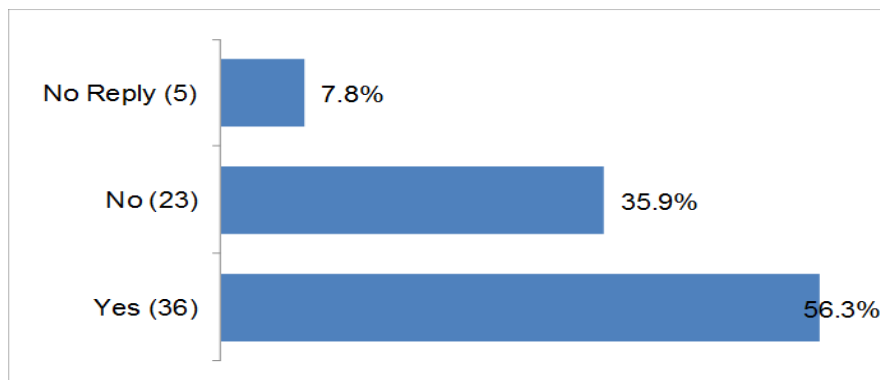
Q1: Removing the Aiming High offer means that Aiming High flexible one-to-one support and the short break grant would no longer be available. Short break services would only be provided following an assessment carried out by Derbyshire Children's Services that identifies that support is necessary and the type and level of service required.

How satisfied or dissatisfied are you with the proposal to cease the Aiming High Derbyshire Offer and to only provide short break services after the completion of an assessment that identifies the nature and level of support that is needed?

□



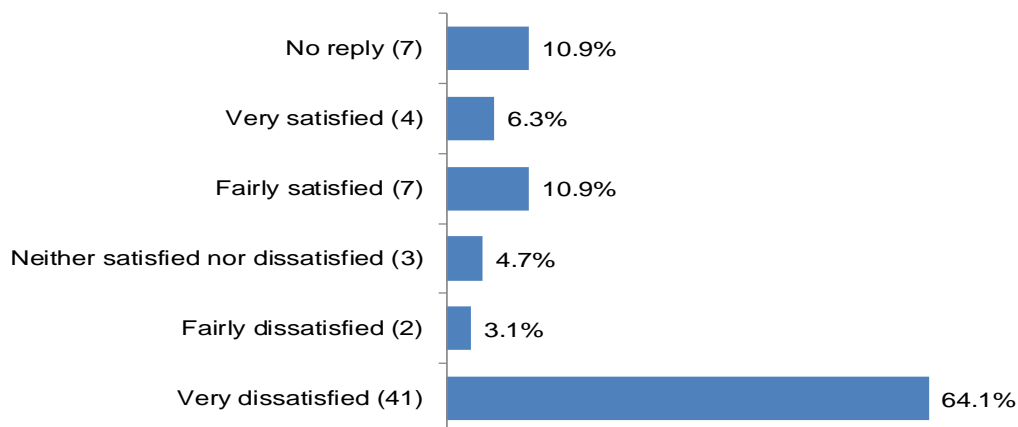
Q2: Would you be affected by this proposal?



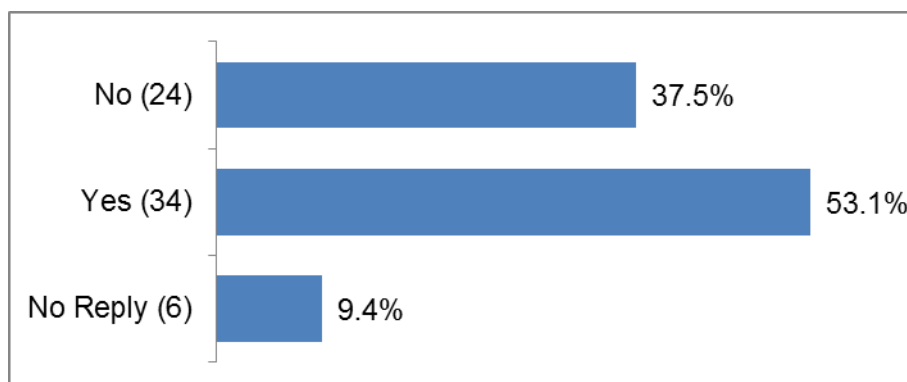
Q4: Removing the Aiming High offer means that Aiming High group activities would no longer be available. Disabled children and young people currently take part in these groups and there are no eligibility criteria.

How satisfied or dissatisfied are you with the proposal to no longer provide Aiming High activity groups for disabled children and young people?

□

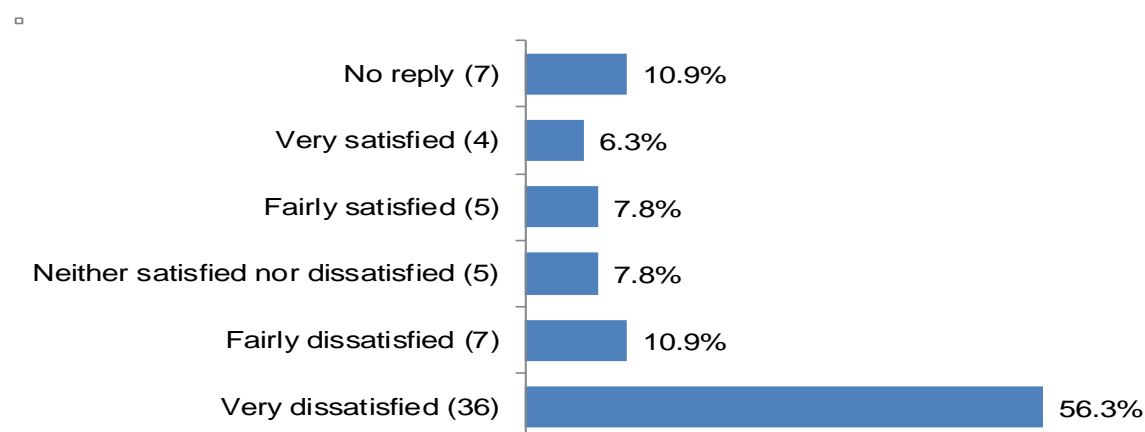


Q5: Would you be affected by this proposal?

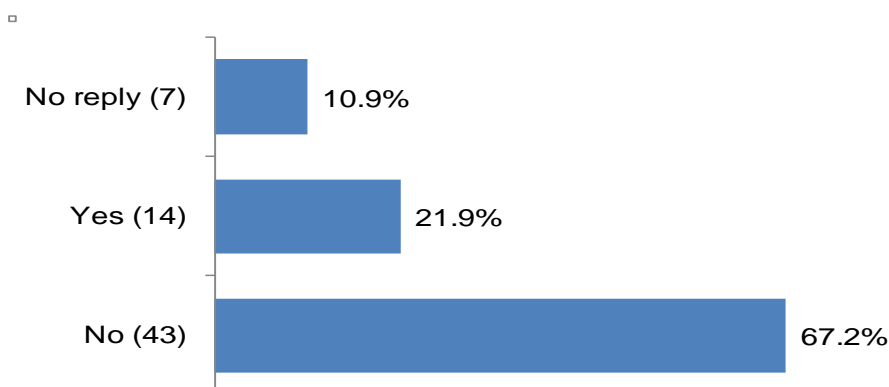


Q7: Removing the Aiming High offer means that Aiming High activity weekends would no longer be available. Aiming High activity weekends provide occasional short break weekends which disabled children and young people can take part in following a referral to a Social Care panel.

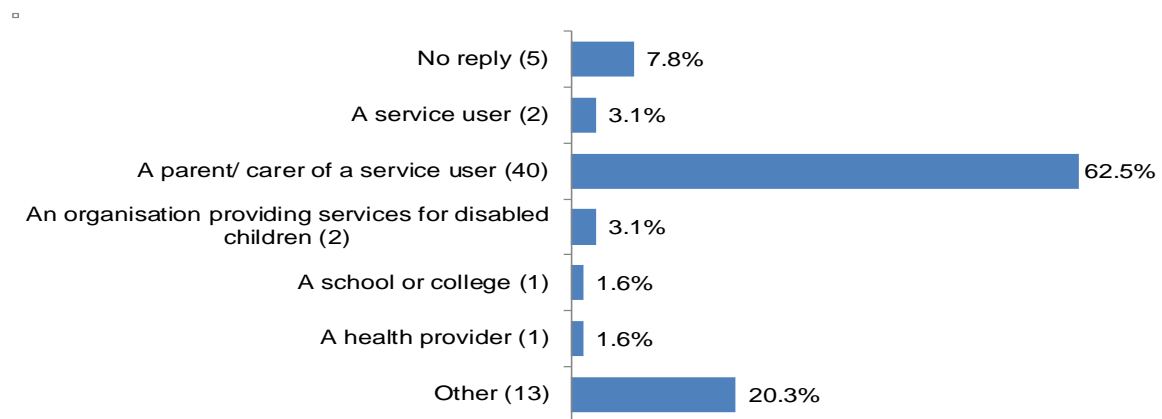
How satisfied or dissatisfied are you with the proposal to no longer provide Aiming High activity weekends?



Q8: Would you be affected by this proposal?



Q12: Are you answering this questionnaire as...



If Other, please specify (one of each):

I have been involved with an organisation providing services for disabled children in the past, and have seen at first hand many parents taking advantage of these services.

Concerned parent

Derbyshire resident

Council taxpayer

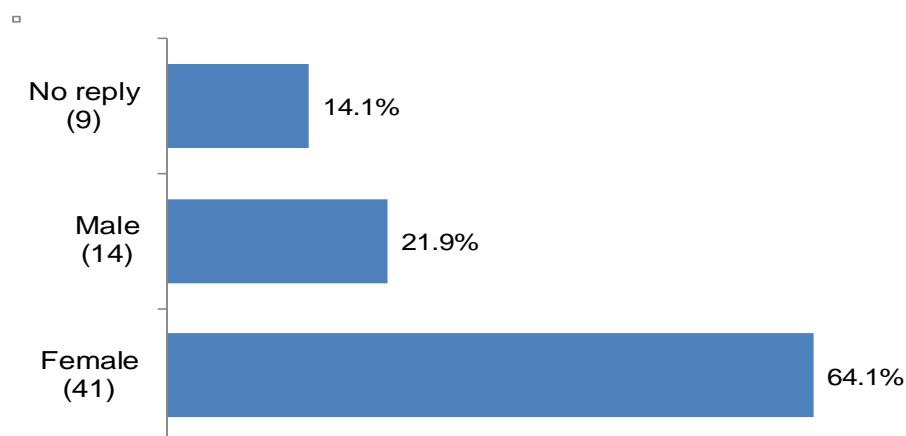
Respite Carer

A childminder of a disabled child

Family member of service user and general interested party who pays tax.

A mother

Question 13: Gender Analysis



Q14: What was your age at your last birthday?

Replies: 53

No Reply: 11

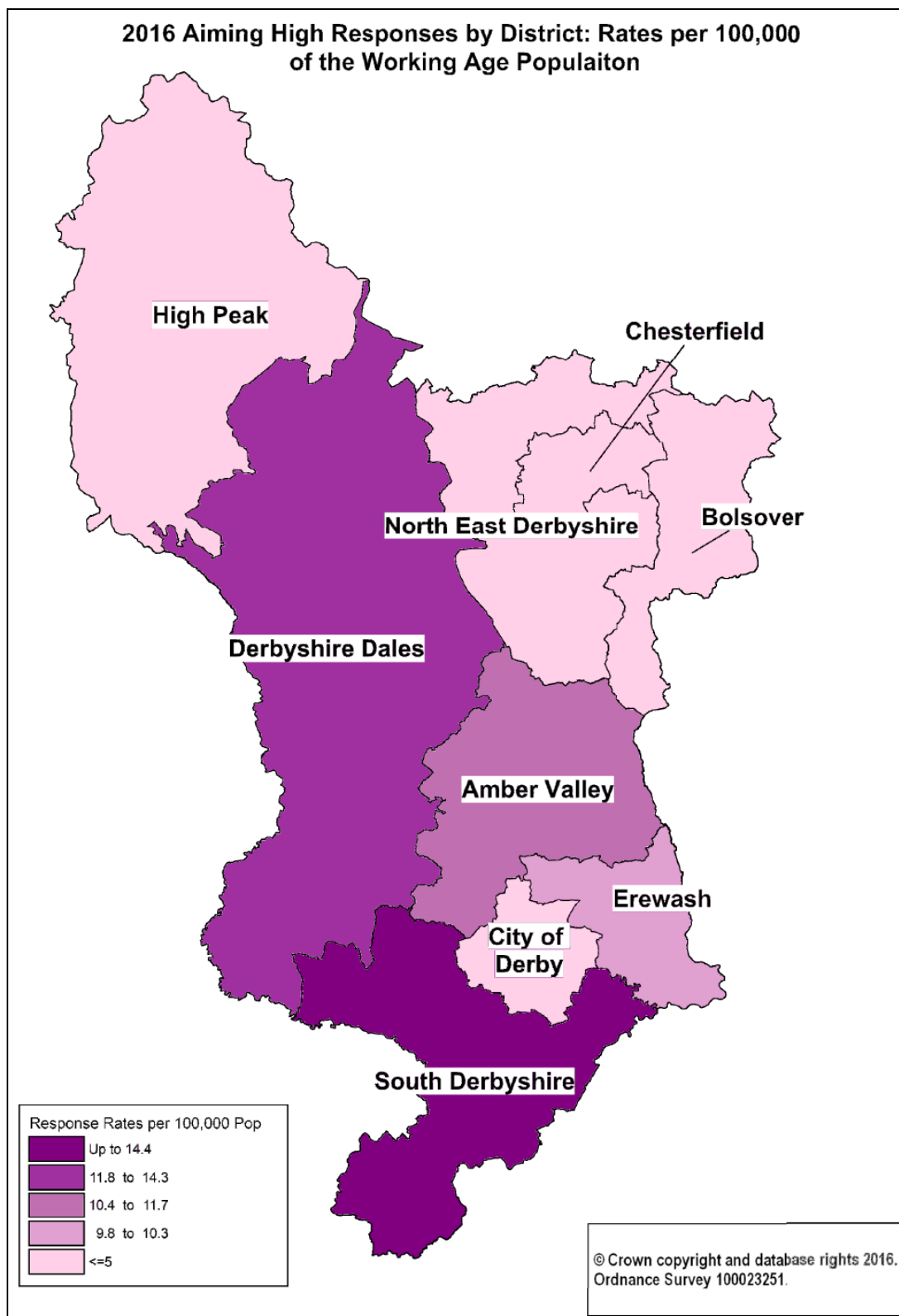
Mean Age: 42.62

Standard Deviation: 9.11

Min: 15
Max: 66

Age Range	No	%
15-25	<=5	<=5%
26-40	17	26.6%
41-60	33	51.6%
60+	<=5	<=5%
No Reply	11	17.2%
Total	64	

Q15: Analysis of Respondents by District

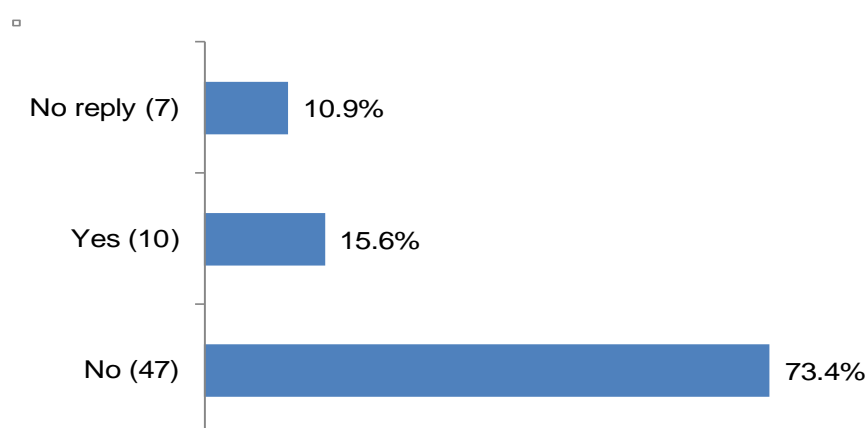


Notes: Only 43 (67.2%) of the 64 respondents to the survey provided full enough postcode information to allow us to map the responses to a District.

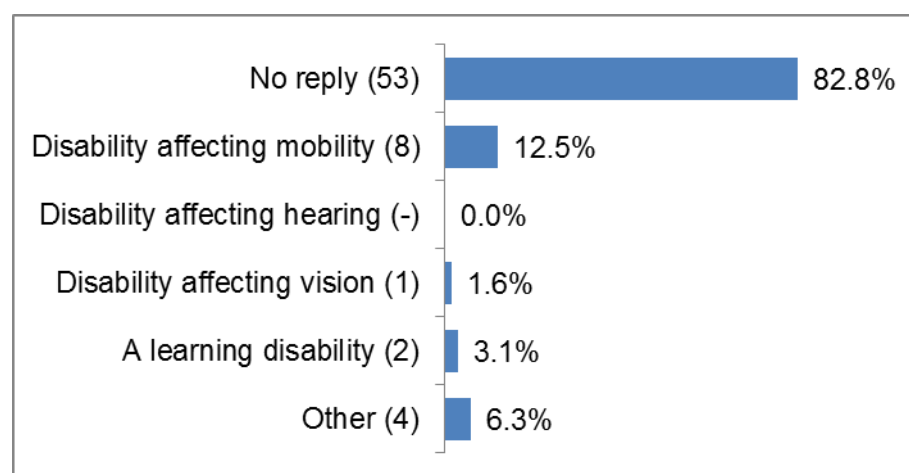
Based on the postcodes that could be mapped to a district, the map shows the number of responses to the consultation within each district once allowance is made for the differing size of the working age population. The darker the shade of purple the higher the response rate for each district.

- The highest response rates were in South Derbyshire (14.4 per 100,000) and Derbyshire Dales (11.8 per 100,000).
- The lowest response rates were in Bolsover, Chesterfield, Derby City, High Peak and North East Derbyshire (all less than or equal to 5 responses per 100,000).

Q16: A disabled person is someone who has a physical or mental impairment which has a substantial and long term adverse impact on their ability to carry out day-to-day activities. Do you consider yourself disabled?



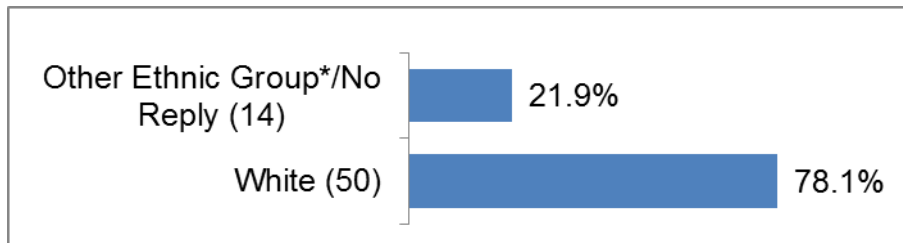
Q17: If you do consider yourself disabled, what type of disability do you have? (Please select all that apply).



If Other, please specify:

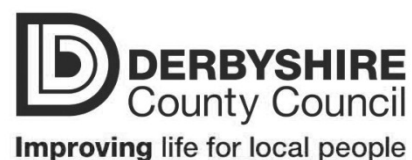
Lung disease affecting mobility through breathlessness

Q18: What is your ethnic group?



* Note that to comply with data protection concerns, because respondents from ethnic groups other than White were so low, the figures have been merged with respondents that did not reply to this question.

Derbyshire County Council Equality Analysis



Department	Children's Services
Service Area	Targeted services - Aiming High Derbyshire Offer
Changes or proposals	Aiming High Derbyshire Offer
Chair of Analysis Team	Julie Harper
Date of Analysis	28.04.2016
Version	2.4

1. Prioritising what is being analysed

a Description of current service arrangements

Derbyshire County Council provides a 'menu' of short break provision for disabled children/young people and their families at differing levels of need: the Aiming High Derbyshire Offer currently forms one strand of the wider short breaks offer. In 2015/16 the allocated budget for Aiming High activities and support was in the region of £1 million.

Following consultation and Cabinet agreement a reduced Aiming High Offer was implemented from 1st April 2016. The

annual budget required to deliver the reduced offer in 2016/17 is £606,982. The authority has subsequently consulted on proposals that, if agreed, would cease the Aiming High Offer from 1st October 2016, allocations have therefore been pro-rated and the budget for six month of delivery of the reduced offer is £303,491. If the proposal to no longer provide the Aiming High Offer is not implemented then the remainder of the provision or monies would be available in the second part of the year.

Short breaks for carers of disabled children and young people are different from child care, education or universal provision, which anyone in the community can access, e.g. local leisure centres. Short break services are a range of services that support disabled children and their families and are intended to give:

- disabled children and young people enjoyable experiences away from their primary carers, thereby contributing to their personal and social development and reducing social isolation
- Parents and families a necessary and valuable break from caring responsibilities.

The current Aiming High Derbyshire Offer includes:

- Group activities for disabled children/young people: This is in the form of funding for two organisations per district to provide groups for disabled children that otherwise would experience difficulties accessing a short break activity. There are no criteria or assessments applied: providers determine the level of provision each child/young person can have based on their needs and the providers available capacity.
- Flexible one-to-one support: eligible disabled children/young people have one or more of the following:
 - an autistic spectrum condition, most likely with other impairments such as a severe learning disability or challenging behaviour
 - complex health needs
 - moving and handling needs that require equipment and adaptations
 - challenging behaviour linked to other impairments, such as a severe learning disability.
 - and not be in receipt of any other services from social care.

From 1st April 2016, those meeting the criteria can access up to 40 hours of flexible one-to-one support per year. One-to-one support is provided through 3 organisations in each district, giving families a choice of provider, subject to availability.

- Short break grant. Families have the option of choosing a short break grant as an alternative to the offer of flexible one-to-one support; from 1st April 2016 this is a cash grant of up to £400 per year to be used towards providing short breaks. Families do not have an option to use the grant to fund family holidays.

An assessment identifying the nature and level of needs is not a requirement in order to access group activities, flexible one-to-one support or the grant. Providers determine access to group activities and a lead professional confirms that the child or young person meets the eligibility criteria for flexible one-to-one or grant support. Lead professionals should confirm that the disabled child or young person is not able to access group activities without one-to-one support and that they are not in receipt of other social care provision.

In addition the Aiming High Offer includes:

- Aiming High activity weekends: these are occasional weekend activity breaks for older children and young people with more complex needs. Access to activity weekends is based on an assessment of need and is approved by a Social Care Panel.

As the Council planned to consult on proposals that, if implemented, would cease the Aiming High Offer from 1st October 2016 the maximum amounts of flexible one-to-one support and grant and budgets for group activities were pro-rated to reflect delivery over a six month period; April 2016 to September 2016. During this six month period the maximum amount of flexible one-to-one support is 20 hours and the maximum grant is £200.

The table below illustrates the short break offer in Derbyshire. The services shaded in grey are those that would be affected by the proposals.

Universal <i>Available to all children and young people</i>	Inclusive Local Clubs and activities (for example, Children's Centre groups, Derbyshire Youth Service universal services, after school clubs etc.)
Targeted	Specialist DCC youth service disability groups

Can access without a formal assessment	
	Aiming High group activities – open to any child or young person with a disability aged 5-17
	Aiming High flexible one-to-one support or a short break grant – open to children/young people aged 5-17 who meet the eligibility criteria
Social Care & Specialist short break services Access identified through formal assessment	Aiming High activity weekends – provided by the voluntary sector.
	Disabled Children's Core Services: Fostering, Residential, Outreach and Family Support Services

Universal services/activities: are available to all children and young people and have no eligibility criteria. Families, children and young people tell us they want to be able to use local universal services and settings. The Disability Inclusion Team can provide support to universal settings to help them meet the needs of disabled children and young people.

Targeted services/activities include: specialist Youth Service Disability Groups which provide a programme of recreational and sporting activities for young people aged 11+. There are no eligibility criteria, however, some groups do have a specialist focus such as the groups for Deaf and hearing impaired young people.

Aiming High group activities: Derbyshire County Council currently contracts with voluntary sector organisations to offer group activities for disabled children and young people aged 5 – 17 years. Participants self-refer, however providers should be initially approached in order to discuss levels of need and to determine any additional support that may be required.

Aiming High flexible one-to-one support or short break grant or a combination of the two are for children/young people who cannot access any group activities due to the nature and/or severity of their needs. There are eligibility criteria and applications need to include evidence of the young person's disability and be signed by a lead professional, such as a school Special Educational Needs Co-ordinator, nurse, Multi-Agency Team Worker etc. Children and young people must not be receiving any other short breaks or similar support.

April 2016

The Aiming High flexible one-to-one support and group activities are provided by 7 voluntary sector organisations; they are currently contracted with Derbyshire County Council to provide these services until 30th September 2016.

Aiming High activity weekends are accessed following consideration and approval at a social care panel.

Specialist short break provision is provided following assessment by the Disabled Children's Team. Social Care and specialist short breaks services provide essential support to families who without this support would not be able to look after their disabled child due to the high levels of need identified through a statutory assessment. These services include Fostering, Residential, Outreach and Family Support Services such as Direct Payments or Personal Budgets.

b Details of proposals or changes

On the 26th January 2016 Cabinet agreed proposals to reduce the Aiming High flexible one-to-one support, grant and the budget for group activities by 50%: this was implemented from 1st April 2016. It was also agreed that a further consultation should take place between 19th February 2016 and 29th March 2016 on the following proposals:

- Cease the Aiming High Derbyshire Offer, associated branding and criteria. Aiming High group activities, flexible one-to-one support and/or grant would no longer be available.
- No longer provide a budget for the delivery of Aiming High group activities.
- No longer commission Aiming High activity weekends
- Offer a formal assessment to those families with disabled children and young people who are unable to access universal services without short break services/support.
- Short break services would only be provided after the completion of a formal assessment carried out by Derbyshire Children's Services.

Implementation of these proposals, if agreed, would be from 1st October 2016.

Background:

Consultations on proposed changes to the Aiming High Offer were carried out in 2014 and 2015, in addition to the most recent consultation in 2016.

Following the consultation conducted in 2014 the Aiming High Offer remained unchanged in 2015-16; the consultation identified that there was significant opposition to cuts to provision for disabled children and that access to support and the grant without the need for an assessment was valued. In response to this feedback, and in light of ongoing budgetary pressures, a further consultation took place in 2015 on proposals to retain the Aiming High criteria and to limit the amount of support available without the need for an assessment:

- I. Access to Aiming High flexible one-to-one support, without the need for an assessment, would be reduced from 80 to 40 per year;
- II. The option of choosing a short break grant as an alternative would remain but with the maximum amount of grant reduced from £800 to £400 per year. In addition, there would no longer be an option for families to use the grant to fund family holidays.
- III. The budget for Aiming High group activities would reduce from £300,000 to £150,000 for the full year.

The consultation carried out in 2015 identified that there was significant opposition to any proposal that would reduce, or make it more difficult to access, support for disabled children and their families. In addition concern was expressed regarding the cost of any additional assessments resulting from families' needs not being met by the reduced offer, the capacity of services to respond to requests for assessment and the potential for increased demands on other Council budgets. Many respondents expressed a view that limited resources should be focussed on supporting those with greatest need and that there should be greater accountability, in particular for how the grant is used.

The Council appreciates that families have benefitted from the provision made available through the Aiming High Offer and it is with reluctance that further consideration is given to the provision of services to disabled children and young people and their families for whom there has not been a formal assessment that identifies the nature and level of need.

As a result of the pressing financial situation, a further consultation took place between 19th February 2016 and 29th March 2016 on proposals to cease the Aiming High Offer and to only provide short break services following a formal assessment that identifies that additional support is necessary.

c Rationale for proposed changes

The existing short breaks offer was developed as a result of increased funding that was made available to Local Authorities to extend access to short breaks for disabled children and their families. In 2010-11, Derbyshire County Council received a Government grant of £2.37 million for this purpose. The grant was used to increase the range of short break services, including “Aiming High” and a number of Social Care services for families with the highest levels of assessed need. Whilst this has been extremely positive, this funding stream is no longer ring-fenced. Funding was initially subsumed into the Early Intervention Grant (EIG) and subsequently into the main Council funding.

Over the same period spending on short breaks has increased year on year. In 2015-16 the budget for short breaks for disabled children and young people was £3.9 million, well in excess of the 2010-11 Government grant. The 2016/17 budget for services provided as a result of an assessment conducted by social care is in the region of £3.6 million. The limitations of the Children’s Services budget are such that priority must be given to ensuring that these resources can continue to provide support to those families with the most significant need.

In the last five years the Council has had to face unprecedented reductions in its finances. The Council needs to make further cuts and the Children’s Services budget could ultimately reduce to circa £70m, around half of the 2010-11 budget. Consequently, there is no alternative but to consider implementing savings in key service areas.

Starting Point has been introduced to provide a single point of access for referrals into Children’s Services. It would therefore be appropriate and consistent for requests for support to be triaged through Starting Point; this will assist in achieving consistency, efficiency and ensuring that families are directed to the appropriate service.

2. The team carrying out the analysis

Name	Area of expertise/ role
Julie Harper	Acting Head of Commissioning & Partnerships, Children's Services
Linda Dale	Acting Service Director – Performance, Quality and Commissioning, Children's Services
Bev Milway	Head of Service - Provider Services Disabled Children
Denise Hudson	Commissioning and Contract Support Officer, Children's Services
Wesley Downes	DCC Policy

3. Existing information and consultation based feedback

Sources of data and reason for using

Source	Reason for using
Aiming High Consultations: Consultations took place in 2014, 2015 and 2016	<ul style="list-style-type: none"> • Information obtained from: families, children and young people using the service, providers and other interested parties in the form of an online questionnaire • Information obtained from: families, children and young people using the service, providers and other interested parties in the form of a paper questionnaire, made available on request. • Information obtained directly from groups of disabled young people during the consultation in 2014 and the consultation held between August to November 2015. The Disability Inclusion Team supported the 2014 consultation and independent advocates supported the consultation in 2015.

April 2016

Aiming High contract monitoring information	Provides service user volume, satisfaction data and outlines performance
Aiming High service user satisfaction surveys	Provides service user experience and satisfaction data
Aiming High Provider Annual Report	Provides service user experience, satisfaction and provider performance data
Consultation on Special Educational Needs and Disability (SEND) Reforms and the Local Offer	Information gained from families, children and young people in the form of a questionnaire that formed part of the consultation on the implementation of the SEND Reforms in 2014.
Special Educational Need and Disability Code of Practice and associated regulations	Contains provisions to reform the current system and drive the changes that will deliver co-ordinated assessments and support and greater personalisation
Derbyshire Short Breaks Statement	Currently under review: sets out the detail and range of short breaks services and eligibility criteria
Breaks for Carers of Disabled Children March 2011.	Departmental advice to local authorities
0-25 SEND in Derbyshire Interim Needs Assessment April 2016	Provides information on the number of children and young people in Derbyshire with special educational needs and/or disabilities from school census, DCC Tribal and Profile systems

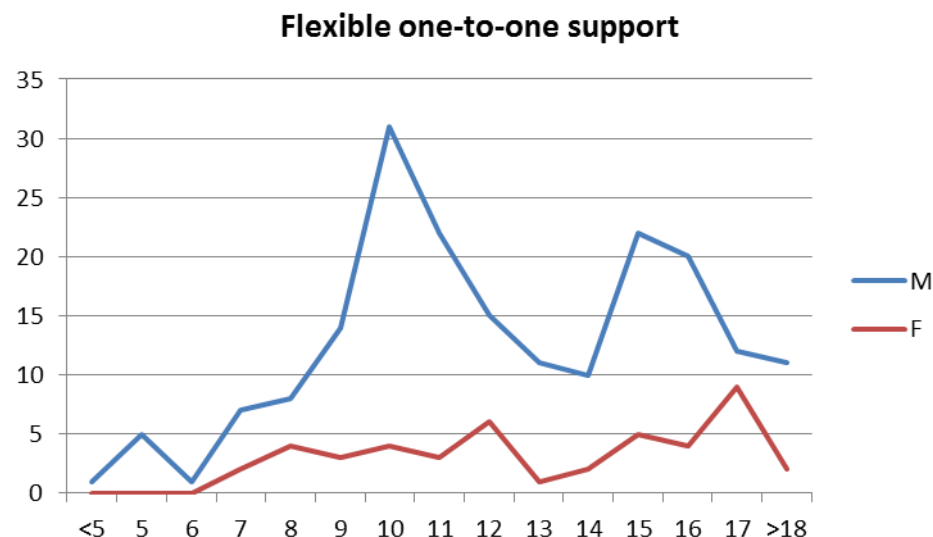
4. Known impact on different protected characteristic groups and any mitigation

Statutory

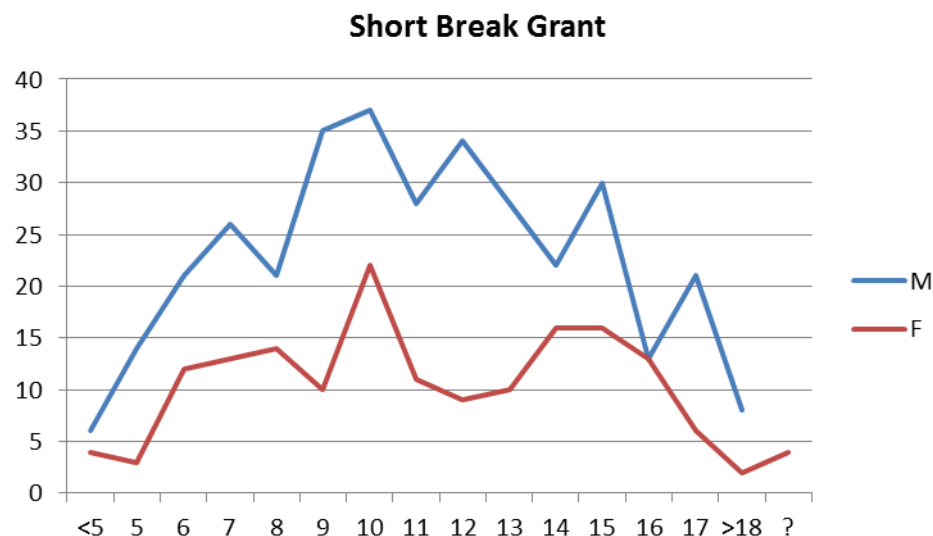
<i>Protected Group</i>	a From existing data and information – who is likely to be adversely affected, how, and to what degree? Will anyone gain or benefit from the proposals?
Age including children and families, older people	Current users and their families are most likely to be adversely affected by the proposals. The Aiming High Derbyshire Offer is targeted at disabled children/young people aged between 5-17 years. Those accessing flexible one-to-one support, short break grant or a combination of both

are required to meet relevant eligibility criteria. Access to Aiming High activity weekends is approved by a social care panel. There are no criteria or assessments applied to group activities: providers determine eligibility.

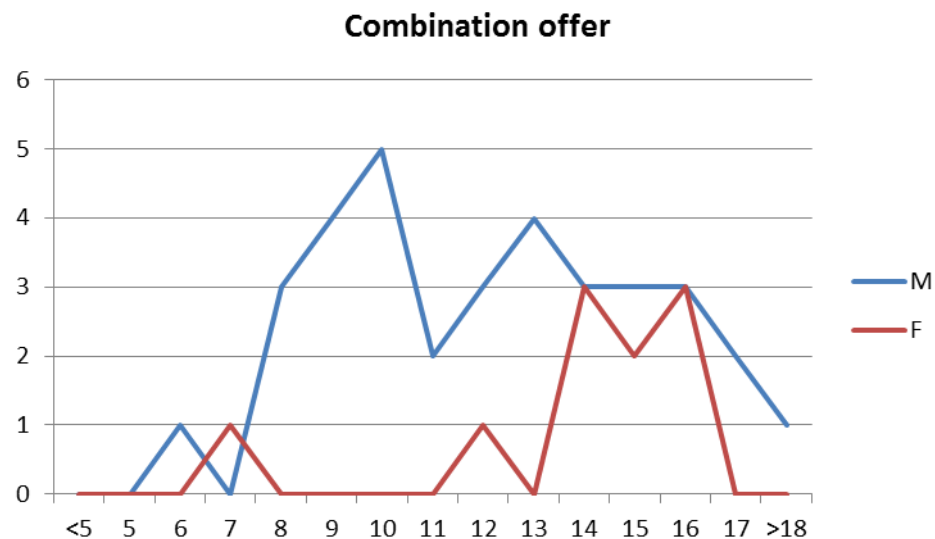
Flexible one-to-one support: The highest proportion; 26%, of young people accessing flexible one-to-one support are aged between 10 and 11 years. 22% of all children and young people accessing flexible one-to-one support are age between 15 and 16 years. A significantly higher number of males access one-to-one support; the chart below shows the use of flexible one-to-one support by age and gender.



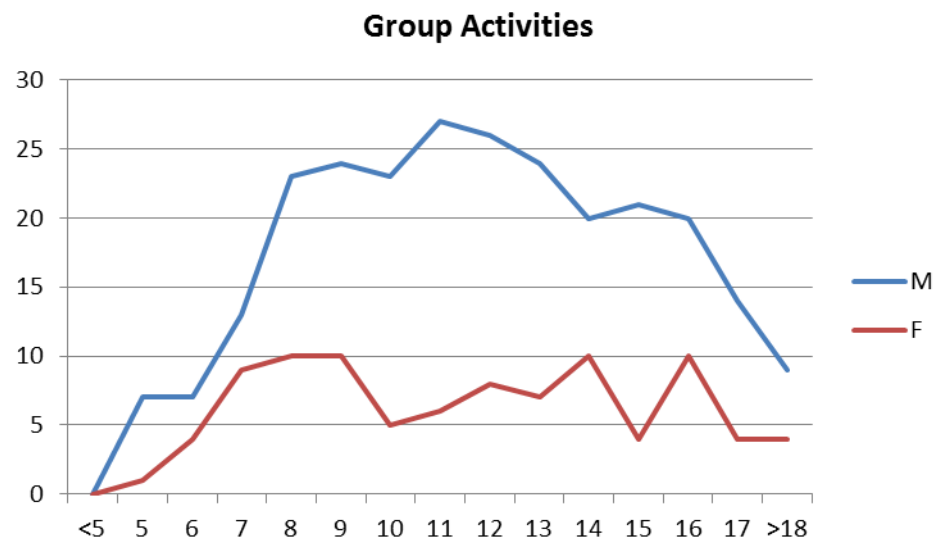
Short Break Grant: access to the grant is relatively consistent across all ages. A significantly higher number of males access the grant: the chart below shows use of the Aiming High grant by age and gender.



Combination Offer: a smaller number of users access a combination of flexible one-to-one support and a short break grant. The highest proportion; 39%, of young people accessing a combination of flexible one-to-one support and short break grant are aged between 14 and 16 years. The highest numbers of males accessing the combination offer are aged 10 at 11%, the highest numbers of females are aged 14 and 16 years. Significantly more males use the combination offer: the chart below shows use of the combination offer by age and gender.

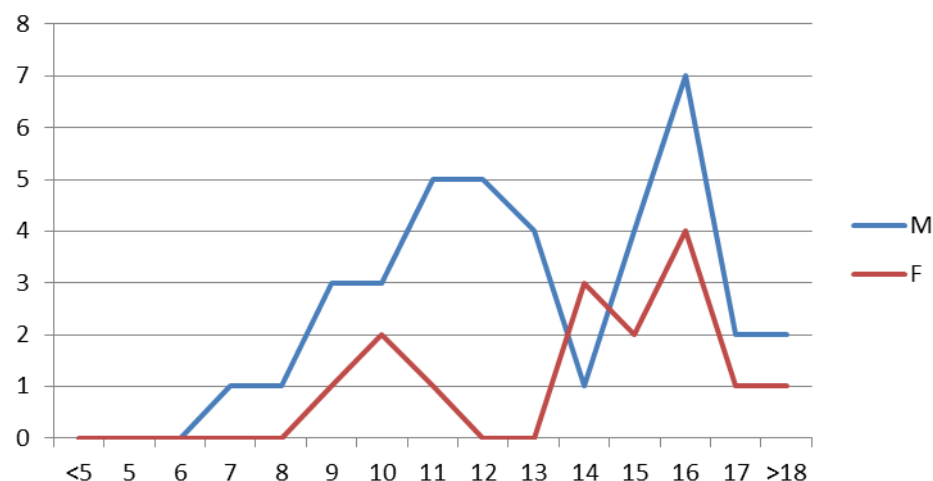


Aiming High Group Activities: The highest proportion; 20%, of young people accessing Aiming High group provision are aged 9 and 12 years. The highest numbers of males accessing group activities are aged 11 and 12, the highest numbers of females are aged 8, 9, 14 and 16 years. Significantly more males use Aiming High group activities: the chart below shows use of Aiming High group activities by age and gender.



Aiming High Activity Weekends: fewer young people access Aiming High activity weekends, these are occasional short break weekends approved via a Social Care panel. The highest number of both males and females is aged 16. The number of males accessing the activity weekends is significantly higher than females: the chart below shows use of the Aiming High activity weekends by age and gender.

Residential Activity Weekends



1056 children/young people have accessed Aiming High activity weekends, group activities, one-to-one flexible support and/or the grant provided through the Aiming High Derbyshire Offer during 2015/16; some children/young have accessed more than one provision therefore the total numbers of users per activity will be higher.

In summary the above data identifies that users of Aiming High Activity weekends, Aiming High group activities, 1:1 flexible support and grant have a mean age of 12 years, however the most prevalent age of the users is between 9 to 12 and 15 years and this is the age group who would, with their families be most affected by any change.

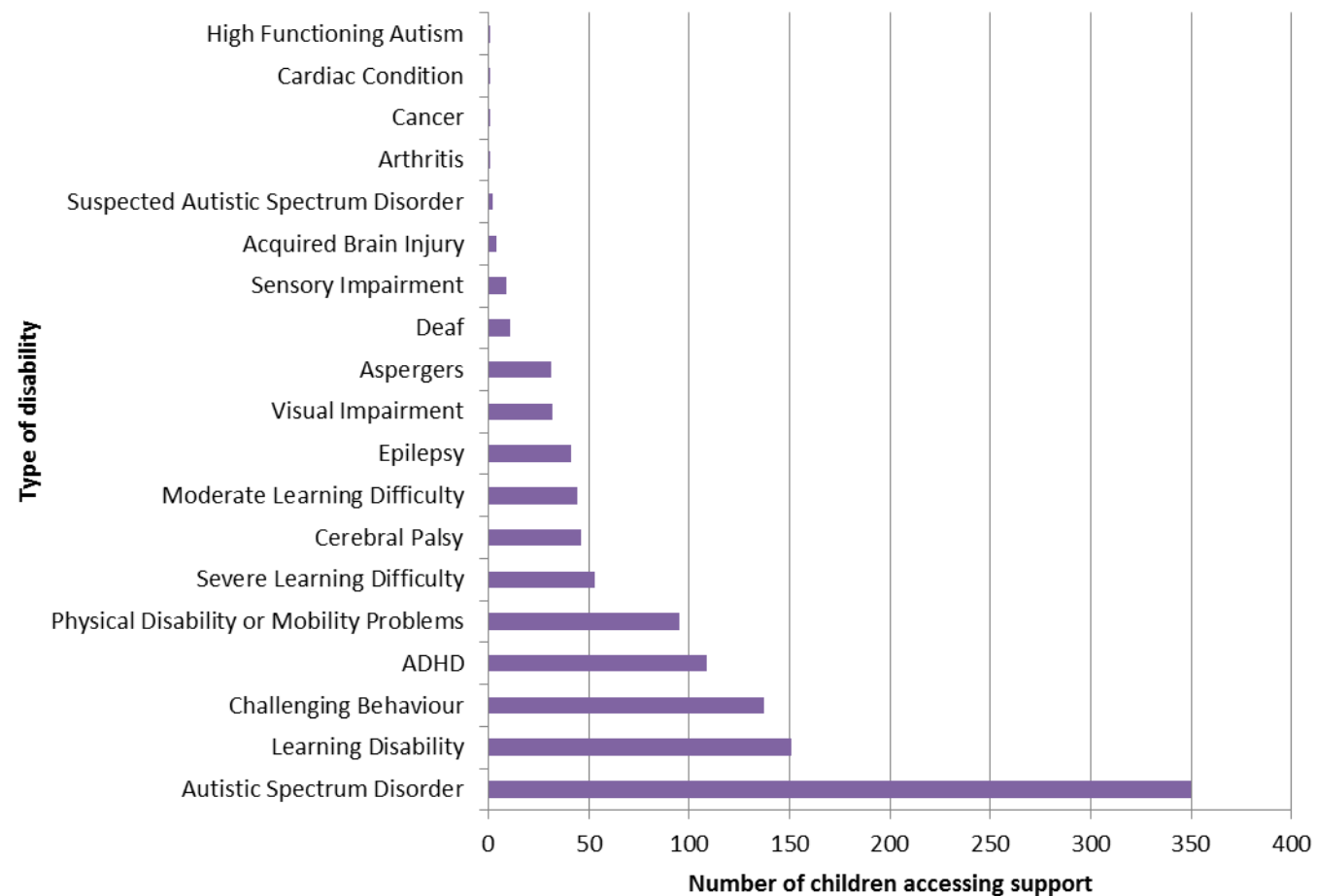
Data gained from the consultations in 2014, 2015 and 2016 suggests the mean age of parent / carers of children and young people accessing aiming high support is 43.2, 42.4 and 42.6 respectively. It is not demonstrated that elderly people are directly adversely affected by the proposals; however there may be individual arrangements where grandparents provide support/care and the demand on elderly relatives to help with support could increase.

	<p>b From existing customer and other feedback including consultation feedback– who is likely to be adversely affected, how and to what degree? Will anyone gain or benefit?</p> <p>Aiming High is for disabled children and young people, those most affected will be current users and their families. The proposal will have an adverse effect on families currently accessing Aiming High: some families will no longer be eligible for short break services and will need to be signposted to other provision or sources of information.</p> <p>As access to Aiming High does not require an assessment of need, the nature and level of support required by those using Aiming High has not been determined in detail, however, it is possible that some families with higher levels of need could find that, following assessment, the support identified is better tailored to meet individual needs and families' circumstances.</p> <p>2014 Consultation: Of the 227 responses to the online consultation 34 of these were from young people with an age range of 10 to 23 years. 39 respondents chose not to answer this question. A total of 67 young people attended face to face group consultation, however not all young people were able, or wished, to complete a formal consultation paper and views were collated by the Disability Inclusion Team. 26 individual responses were documented; the age of the youngest person taking part was 11 years.</p> <p>2015 Consultation: Out of 103 respondents to the online consultation 6 of the responses were from young people below the age of 24. A total of 64 young people took part in the targeted youth consultation sessions.</p> <p>2016 Consultation: Out of 64 respondents to the online consultation less than 5% of the responses were from young people below the age of 25 years.</p>
--	---

	<p>Aiming High is aimed at children/young people aged 5-17 years; there is not considered to be a disproportionate impact for under-fives. The parents of children aged under 5 years have access to other services, although access to Aiming High is possible in exceptional circumstances; current data shows that, from a total of 509 individuals who have accessed the grant, 2% are aged under 5.</p> <p>Young people taking part in the group consultations anticipated feeling sad if they had fewer groups or activities to access in the future. They were concerned about not seeing friends as they had few opportunities outside of school to meet up and needed help to organise and fund activities and trips.</p>
	<p>c Are there any ways of avoiding or reducing likely possible adverse impact, what are those actions, and how will they assist</p> <p>Whilst not alleviating the full impact of the proposals for all families, support can requested via Starting Point. For those with higher levels of need, a formal assessment would better ensure that any resulting support was tailored to meet individual needs and circumstances and young people would be directed to age appropriate services.</p> <p>Whilst families value the support of Aiming High, a detailed analysis of the outcomes and benefits to young people and their families is limited by the current process which does not require a formal assessment of need and systematic review of the impact of the support.</p> <p>Families who have a budget to purchase additional support and services (this might be a Direct payment, Personal Budget or the family's own budget) can access a Derbyshire County Council Framework of Providers. These providers are quality assured to promote choice, quality and value for money and to deliver specialised services for disabled children and young people. The list of Framework providers is made available to schools, Multi-Agency Teams, Social Care and other agencies within the Derbyshire Children's Trust who may use it to spot-purchase provision on behalf of young people or families.</p>

	<p>Derbyshire County Council currently provides a range of targeted youth groups located throughout the county aimed at disabled young people from age 11 years upwards. An initial review has identified capacity in those groups to support young people who may not in the future be able to access Aiming High: approximately 92 young people attend and 35% are aged over 19 years. These groups could be better promoted and a detailed review would address any barriers to further access to these groups and aim to ensure that that full use is made of these opportunities for non-assessed short breaks.</p> <p>The Derbyshire Local Offer provides information on a wide range of specialist groups and activities that are not funded by the Council and are delivered by VCI providers, such as Fairplay and Umbrella, across the county.</p> <p>The SEND Reforms require that there is a greater focus on preparing young people with special educational needs and disabilities for adult life. It is expected that planning for individual young people will address some of the concerns raised during consultation: specifically how young people with special educational needs and disabilities can develop and be supported to socialise, access their local communities, engage in ordinary activities and become more independent.</p>
<p><i>Protected Group</i></p> <p>Disabled people including mobility, sensory, learning, mental health, HIV, and also include carers and relatives</p>	<p>a From existing data and information – who is likely to be adversely affected, how, and to what degree? Will anyone gain or benefit from the proposals?</p> <p>In 2015/16 1,056 children/young people accessed Aiming High group activities, one-to-one support and/or grant and Aiming High activity weekends. Aiming High is aimed at disabled children and young people, therefore ceasing Aiming High will have an adverse effect on disabled children and young people and their families.</p>

	<p>Research from the Council for Disabled Children (CDC) suggests that around 7% of children are likely to be disabled, and that approximately 1.2% would be severely disabled.</p> <p>Is it therefore estimated that around 7,854 children aged 5-17 have disabilities in Derbyshire. A proportion of those would have needs that require specialist support based on a formal assessment and would be supported by and open to social care services. The majority of disabled children/young people are able to access universal and targeted group activities without the need of one-to-one support.</p> <p>Aiming High is aimed at disabled children and young people who experience difficulty accessing other universal and targeted activities. Aiming High was set up to enable ease of access to a limited amount of support without the need for further formal assessments. As a result, records detailing the nature and severity of disability experienced by the child/young person using Aiming High are not recorded in detail. Individual client records have, in many instances, been created specifically to record that an application for Aiming High has been received and the outcome of the request.</p> <p>Where information about an individuals' disability has been recorded using the Framework-i disability categories; the highest proportion of individuals accessing Aiming High in 2015/16 are identified as having autistic spectrum disorder.</p>
--	--



During the 2015-16 financial year, a maximum of 80 hours of flexible one-to-one support could be provided through the Aiming High offer. Dependant on when support has been applied for will result in varying hours being approved.

	<p>In 2015-16, 257 individuals were allocated flexible one-to-one support of varying hours throughout the year; 26% of these utilised their full allocation, 20% of these utilised less than half their full allocation. The average uptake of the allocated one-to-one hours across all service users is in the region of 74%. The impact, therefore, would be felt differently by families, in some instances, families report that unused hours do not always arise because of family choice but because of issues with providers being able to deliver appropriate or timely support.</p> <p>Whilst ceasing the Aiming High provision would have a disproportionate impact on disabled children/young people and carers of disabled children/young people; some families with children/young people with higher levels of need may gain from the proposals, as a formal assessment of their needs could result in a higher level of support than that available through Aiming High.</p>
	<p>b From existing customer and other feedback including consultation feedback– who is likely to be adversely affected, how and to what degree? Will anyone gain or benefit?</p> <p>Feedback identified that the proposals would have significant impact on disabled children/young people who are currently accessing the Aiming High Derbyshire Offer.</p> <p>The proposal to cease the Aiming High Derbyshire Offer, associated branding and criteria, would result in Aiming High activity weekends, Aiming High group activities, flexible one-to-one support and/or grant no longer being available.</p> <p>The ceasing of Aiming High group activities would result in fewer opportunities for some young people to socialise and develop friendships. Some providers are already planning how they would be able to fund alternative activities if funding from Aiming High is not available in the future.</p>

	<p>Annual Aiming High Parent/Carer Feedback Reports for 2014/15 identify high rates of parent/carers satisfaction: 86% of parent/carers providing feedback on group activities stated that their child's confidence had improved and 81% stated an increase in the child's independence. It is not reported whether, as a result of these improvements, children/young people go on to access other group activities.</p> <p>88% of parents/carers providing feedback on flexible one-to-one support said it reduced family stress; 77% stated their child had learned and 72% had increased independence. It is not reported whether, as a result of these improvements young people were able to access other universal and targeted activities without the need for one-to-one support.</p> <p>Consultation feedback can be summarised as follows:</p> <ul style="list-style-type: none"> a) There was significant opposition to ceasing any support for disabled children and their families as this could escalate family stress and, in some cases, lead to an increased demand on other Council budgets. b) Concerns were raised that ceasing support will result in reduced opportunities for disabled children to experience friendship and other social groups and an increase of social isolation. c) Many respondents expressed a view that savings could be found in other Council budgets instead of services for disabled children; examples included Adult education classes, road maintenance, reductions to the Council's staffing and management posts and that the Council should consider alternative ways of working to ensure efficiency and prevent any overlap of roles. d) Suggestions included; simplifying activities offering a more cost effective service and consider alternatively means to funding services including charging and means testing
--	--

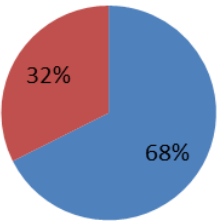
	<p>and ensuring that families were claiming all benefits to which they are entitled.</p> <p>e) Some comments expressed concern that the proposals would result in there being no specialist short break services for disabled children, young people and their families.</p> <p>Some young people may find that a wider choice of provision is available if they are supported to fully explore the full range of possibilities: including specialist youth groups, VCI groups etc.</p> <p>Eligible families may find that following assessment support can be better tailored to meet individual needs. Some families with higher levels of need may gain from the proposals as a formal assessment of their needs could result in the need for a higher level of support being identified and subsequently accessed.</p>
	<p>c Are there any ways of avoiding or reducing likely possible adverse impact, what are those actions, and how will they assist</p> <p>a) Whilst not all families will be eligible for services, families would be able to request a formal assessment that would better ensure that any support was tailored to meet the level of need for each individual. Some families with higher levels of need may gain from the proposals as a formal assessment of their needs could result in the need for a higher level of support being identified and subsequently accessed. An assessment would also ensure that the council's limited budget would focus support on those with identified needs.</p> <p>b) Some young people may find that a choice of provision is available if they are supported to fully explore the full range of possibilities: including specialist youth groups, VCI groups etc.</p> <p>Young people who are the subject of an Education Health and Care Plan will have the development of social skills and access to their local community considered as part of the planning and review process. The SEND Reforms require that there is a greater focus on</p>

	<p>preparing young people with special educational needs and disabilities for adult life. It is expected that planning for individual young people will make use of the Local Offer and address some of the concerns raised during consultation: specifically how young people with special educational needs and disabilities can develop and be supported to socialise, access their local communities, engage in ordinary activities and become more independent.</p> <p>Derbyshire County Council provides a range of targeted youth groups located throughout the county aimed at disabled young people. An initial review has identified capacity in those groups to support young people who may not in the future be able to access Aiming High.</p> <p>The Derbyshire Local Offer provides information on a wide range of specialist groups and activities delivered by VCI providers, such as Fairplay and Umbrella, across the county.</p> <p>c) The council has, and continues, to consider all means by which savings can be made without reducing valued services. It is with reluctance that consideration is given to provision of services to disabled children and young people and their families for whom there has not been a formal identification of the level of need. Not all income streams managed by the Council can be re-directed to fund support for children, young people and their families, however. Different ways of working, collaborative approaches at a local level and the re-structure of the SEND services will address some concerns regarding overlapping roles.</p> <p>d) Disabled children young people and their families will continue to have the option of purchasing services, if they have the financial means to do so, through a Framework of Providers. These providers are quality assured by DCC to promote choice, quality and value for money and deliver specialist services for disabled children and young people. The list of Framework providers is made available to schools, Multi-Agency Teams, Social Care and other agencies within the Derbyshire Children's Trust who may use it to spot-purchase provision on behalf of young people or families. Families who wish to may buy</p>
--	--

	<p>services with their own money, with Direct Payments or with Personal Budgets. The Council is continues to consider how savings could be made and services delivered more efficiently in order to enable protect valued support.</p> <p>e) In addition to the targeted activities and youth groups that can be accessed without the need for an assessment, there would continue to be a range of specialist short breaks services available to those who, following a formal assessment, were identified as needing support.</p>
<p><i>Protected Group</i></p> <p>Gender (Sex) including men and women, boys and girls</p>	<p>a From existing data and information – who is likely to be adversely affected, how, and to what degree? Will anyone gain or benefit from the proposals?</p> <p>Gender is not a key factor affecting the delivery of the Aiming High provision; however, more males than females access Aiming High support, reflecting the higher proportions of males with identified disabilities. Flexible one-to-one, short break grant or a combination of these, are accessible to those that meet the eligibility criteria; gender is not a factor in this. There are no criteria or assessments applied to group activities: providers determine eligibility and do not take into consideration the gender of the individual as part of those criteria.</p> <p>68% of children/young people accessing Aiming High support are male. The below pie chart shows the proportions of children and young people by gender that have accessed Aiming High support. There will be some instances where a child or young person has accessed more than one type of support or provision, therefore, this figure does not represent the actual number of individuals accessing Aiming High.</p>

Aiming High Support by Gender

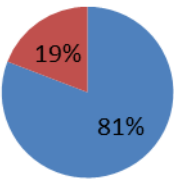
Male Female



The following pie charts represents the gender split per support type

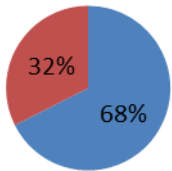
Flexible one-to-one

Male Female



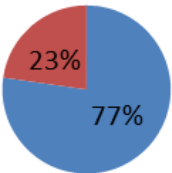
Short Break Grant

Male Female



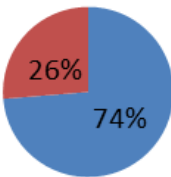
Combination offer

Male Female



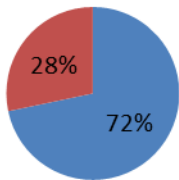
Group Activities

Male Female



Residential Activity Weekends

Male Female



	<p>The proportions of male/female users of Aiming High support are broadly consistent with figures identifying special educational needs and disabilities (SEND). National figures indicate that male pupils are 2.5 times more likely in primary school, and 3 times more likely in secondary school, to have SEND than female pupils.</p>
	<p>b From existing customer and other feedback including consultation feedback– who is likely to be adversely affected, how and to what degree? Will anyone gain or benefit?</p> <p>2014 Consultation: 78% of those who responded to the online consultation were female whilst 22% were male. 11% did not answer this question</p> <p>2015 Consultation: 83% of those who responded to the online consultation were female whilst 17% were male.</p> <p>The gender split of the total numbers attending the targeted youth consultation sessions was 56% male and 44% female; however, there were approximately 2.6 times as many males as females accessing Aiming High support during the 2014/15.</p> <p>2016 Consultation: 64% of those who responded to the online consultation were female whilst 22% were male. 14% did not answer this question.</p> <p>It may be that the higher proportion of females responding to the consultation reflects the likelihood of a female being the main carer.</p>
	<p>c Are there any ways of avoiding or reducing likely possible adverse impact, what are those actions, and how will they assist</p>

	<p>Gender is not a key factor affecting the delivery of the Aiming High provision; however, the majority of users are male.</p> <p>A formal assessment, where appropriate, would better ensure support was tailored to meet the identified needs and would take account of gender. Whilst not all families will be eligible for services, families would be able to request a formal assessment that would better ensure that any support was tailored to meet the level of need for each individual. Some families with higher levels of need may gain as a formal assessment of their needs could result in the need for a higher level of support being identified and subsequently accessed</p> <p>Some young people may find that a wider choice of provision is available if they are supported to fully explore the full range of possibilities: including specialist youth groups, VCI groups etc.</p> <p>Young people who are the subject of an Education Health and Care Plan will have the development of social skills and access to their local community considered as part of the planning and review process and it is expected planning for individual young people with SEND will address some of the concerns raised during consultation: specifically how young people with special educational needs and disabilities can develop and be supported to socialise, access their local communities, engage in ordinary activities and become more independent. More males than females are identified as having special educational needs and disabilities.</p> <p>Derbyshire County Council provides a range of targeted youth groups located throughout the county aimed at disabled young people. An initial review has identified capacity in those groups to support young people who may not in the future be able to access Aiming High. In addition the Derbyshire Local Offer provides information on a wide range of specialist groups and activities delivered by VCI providers, such as Fairplay and Umbrella, across the county.</p> <p>Disabled children young people and their families will continue to have the option of purchasing services, if they have the financial means to do so, through a Framework of Providers. The list of Framework providers is made available to schools, Multi-Agency Teams, Social Care and</p>
--	--

	<p>other agencies within the Derbyshire Children's Trust who may use it to spot-purchase provision on behalf of young people or families. Families who wish to may buy services with their own money, with Direct Payments or with Personal Budgets.</p>
<p>Protected Group</p> <p>Gender re-assignment – including impact, if any, on transgender people</p>	<p>a From existing data and information – who is likely to be adversely affected, how, and to what degree? Will anyone gain or benefit from the proposals?</p> <p>The data is not currently collected and would not be relevant to this analysis as gender re-assignment is not a key factor affecting the delivery of this service</p>
	<p>b From existing customer and other feedback including consultation feedback– who is likely to be adversely affected, how and to what degree? Will anyone gain or benefit?</p> <p>There is no feedback or impact reported on individuals that have under gone gender reassignment. There is no reason to suggest this group would either gain or be adversely affected</p>
	<p>c Are there any ways of avoiding or reducing likely possible adverse impact, what are those actions, and how will they assist</p> <p>Gender re-assignment is not a key factor affecting the delivery of the Aiming High provision; however formal assessment would better ensure support was tailored to meet the need for each individual and their family.</p> <p>The Derbyshire Local Offer provides information on a range of short break opportunities to which a family can be directed without the need for an assessment.</p> <p>Disabled children, young people and their families are able to purchase additional services</p>

	<p>through a Framework of Providers. The list of Framework providers is made available to schools, Multi-Agency Teams, Social Care and other agencies within the Derbyshire Children's Trust who may use it to spot-purchase provision on behalf of young people or families. Families who wish to may buy services with their own money, with Direct Payments or with Personal Budgets.</p>														
<p>Protected Group</p> <p>Race – including all racial groups, including impact, if any, on Gypsies and Travellers</p>	<p>a From existing data and information – who is likely to be adversely affected, how, and to what degree? Will anyone gain or benefit from the proposals?</p> <p>This service is not delivered on the basis of race. However, the January 2011 census indicates that 96% of residents in Derbyshire identify as White British. The chart below indicates the proportion of ethnic groups accessing Aiming High provision during 2015-16 which appears to be broadly consistent with local population statistics</p> <table border="1"> <thead> <tr> <th>Ethnic Group</th> <th>Proportion</th> </tr> </thead> <tbody> <tr> <td>white or white/British</td> <td>82%</td> </tr> <tr> <td>not stated</td> <td>15%</td> </tr> <tr> <td>Mixed or Multiple</td> <td>2%</td> </tr> <tr> <td>Asian or Asian British</td> <td>1%</td> </tr> <tr> <td>Black or African or Caribbean or Black British</td> <td>0%</td> </tr> <tr> <td>White other</td> <td>0%</td> </tr> </tbody> </table> <p>Flexible one-to-one support, short break grant or a combination of both are accessible to those</p>	Ethnic Group	Proportion	white or white/British	82%	not stated	15%	Mixed or Multiple	2%	Asian or Asian British	1%	Black or African or Caribbean or Black British	0%	White other	0%
Ethnic Group	Proportion														
white or white/British	82%														
not stated	15%														
Mixed or Multiple	2%														
Asian or Asian British	1%														
Black or African or Caribbean or Black British	0%														
White other	0%														

	that meet eligibility criteria and ethnicity is not a relevant factor. There are no criteria or assessments applied to group activities: providers determine eligibility and race of the individual is not part of this.
	<p>b From existing customer and other feedback including consultation feedback– who is likely to be adversely affected, how and to what degree? Will anyone gain or benefit?</p> <p>2014 Consultation: Out of the 227 responses to the consultation 97% identified as White British which reflects the ethnicity of the highest number of users. 2% identified as Asian/ British Asian 0.54% identified as 'Mixed' and 0.54% as 'Other' (Polish)</p> <p>2015 Consultation: Out of the 103 responses to the consultation 98% identified as White British which represents the ethnicity of the highest number of users. 1% was of 'Mixed' but did not state the nature of the mix and 1% stated 'other' and described their race as 'English'. 4 responses did not answer this question.</p> <p>2016 Consultation: Out of the 64 responses to the consultation 78% identified as White British which represents the ethnicity of the highest number of users. 6% was of 'other ethnic groups' but did not state the nature of the mix and 16% of the responses did not answer this question.</p> <p>It is not anticipated that there will be differing impacts on different races using Aiming High; the themes identified in the responses were common across the race demographic represented in the consultation.</p>
	c Are there any ways of avoiding or reducing likely possible adverse impact, what are

	<p>those actions, and how will they assist</p> <p>Race is not a key factor affecting the delivery of the Aiming High provision; however formal assessment would better ensure support was tailored to meet the need for each individual. Children's Services assessment and review processes are monitored and reported on with regard to addressing diversity and culture.</p> <p>Disabled children, young people and their families are able to purchase additional services through a Framework of Providers. The list of Framework providers is made available to schools, Multi-Agency Teams, Social Care and other agencies within the Derbyshire Children's Trust who may use it to spot-purchase provision on behalf of young people or families. Families who wish to may buy services with their own money, with Direct Payments or with Personal Budgets.</p> <p>The Derbyshire Local Offer provides information on a range of short break opportunities to which a family can be directed without the need for an assessment.</p> <p>All providers would be expected to take account of any cultural factors or religious beliefs that might affect how a service is delivered or received.</p>
<p>Protected Group</p> <p>Religion and belief including non-belief, including religious minority communities, Humanists</p>	<p>a From existing data and information – who is likely to be adversely affected, how, and to what degree? Will anyone gain or benefit from the proposals?</p> <p>This service is not accessed or delivered on the basis of religion. Flexible one-to-one, short break grant or a combination of both is accessible to those that meet the criteria; religion or beliefs are not part of the criteria.</p>

	<p>b From existing customer and other feedback including consultation feedback– who is likely to be adversely affected, how and to what degree? Will anyone gain or benefit?</p> <p>There is no feedback or impact reported on individual religion or beliefs. Religious beliefs are not a factor affecting access to Aiming High. There is no reason to suggest this group would either gain or be adversely affected.</p>
	<p>c Are there any ways of avoiding or reducing likely possible adverse impact, what are those actions, and how will they assist</p> <p>Religion or beliefs are not a key factor affecting the delivery of the Aiming High provision; however formal assessment would better ensure support was tailored to meet the need for each individual and take account of any religious or cultural factors.</p> <p>The Derbyshire Local Offer provides information on a range of short break opportunities to which a family can be directed without the need for an assessment.</p> <p>Disabled children, young people and their families are able to purchase additional services through a Framework of Providers. The list of Framework providers is made available to schools, Multi-Agency Teams, Social Care and other agencies within the Derbyshire Children's Trust who may use it to spot-purchase provision on behalf of young people or families. Families who wish to may buy services with their own money, with Direct Payments or with Personal Budgets.</p> <p>All providers would be expected to take account of any cultural factors or religious beliefs that might affect how a service is delivered or received.</p>
Protected Group	<p>a From existing data and information – who is likely to be adversely affected, how, and to what degree? Will anyone gain or benefit from the proposals?</p>

<p>Sexual orientation – including the impact, if any, on any lesbian, gay and bisexual people</p>	<p>Sexual orientation of parents or service users is not a key factor affecting the delivery of this service. All families with disabled children who meet the eligibility criteria can access the service irrespective of sexual orientation.</p>
	<p>b From existing customer and other feedback including consultation feedback– who is likely to be adversely affected, how and to what degree? Will anyone gain or benefit?</p> <p>There is no feedback or impact reported on individual sexual orientation of parents or service users. There is no reason to suggest this group would either gain or be adversely affected</p>
	<p>c Are there any ways of avoiding or reducing likely possible adverse impact, what are those actions, and how will they assist</p> <p>Sexual orientation of parents or service users is not a key factor affecting the delivery of the Aiming High provision. A formal assessment would better ensure support was tailored to meet the need for each individual.</p> <p>The Derbyshire Local Offer provides information on a range of short break opportunities to which a family can be directed without the need for an assessment.</p> <p>Disabled children, young people and their families are able to purchase additional services through a Framework of Providers. The list of Framework providers is made available to schools, Multi-Agency Teams, Social Care and other agencies within the Derbyshire Children's Trust who may use it to spot-purchase provision on behalf of young people or families. Families who wish to may buy services with their own money, with Direct Payments or with Personal Budgets.</p>

<p>Protected Group</p> <p>Pregnancy and maternity – including new mothers/ parents</p>	<p>a From existing data and information – who is likely to be adversely affected, how, and to what degree? Will anyone gain or benefit from the proposals?</p> <p>The data is not currently collected and would not be relevant to this analysis as pregnancy and maternity is not a key factor affecting access to and delivery of this service.</p>
	<p>b From existing customer and other feedback including consultation feedback– who is likely to be adversely affected, how and to what degree? Will anyone gain or benefit?</p> <p>There is no feedback or impact reported on pregnancy / maternity; however it can be assumed that this would be an additional pressure if also caring for a disabled child or young person.</p>
	<p>c Are there any ways of avoiding or reducing likely possible adverse impact, what are those actions, and how will they assist</p> <p>Where required, a formal assessment would take account of individual family circumstance, including pregnancy and therefore better ensure that support was tailored to meet the whole family's needs and changing circumstance.</p> <p>The Derbyshire Local Offer provides information on a range of short break opportunities to which a family can be signposted without the need for an assessment.</p> <p>Disabled children, young people and their families are able to purchase additional services through a Framework of Providers. The list of Framework providers is made available to schools, Multi-Agency Teams, Social Care and other agencies within the Derbyshire Children's Trust who may use it to spot-purchase provision on behalf of young people or families. Families who wish to may buy services with their own money, with Direct Payments or with Personal Budgets.</p>

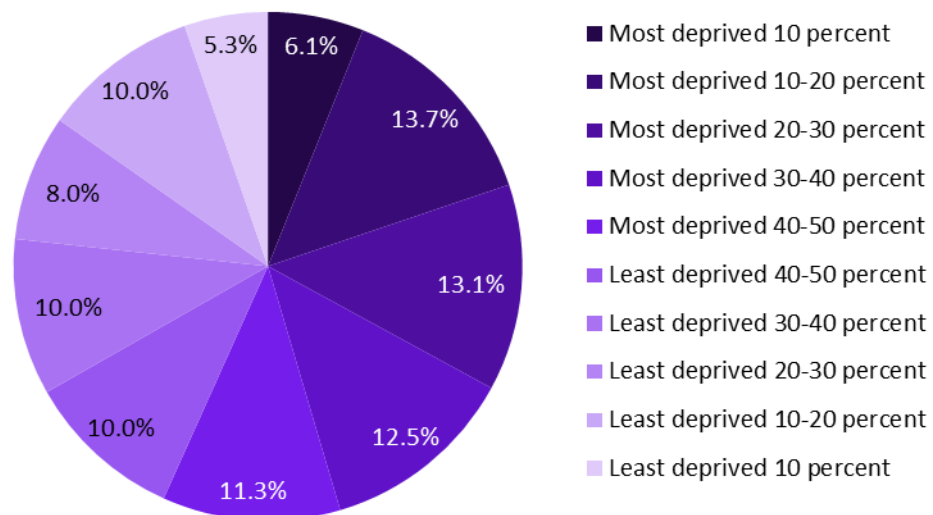
<p>Protected Group</p> <p>Marriage and civil partnership – also include impacts on lone parents and unmarried couples</p>	<p>a From existing data and information – who is likely to be adversely affected, how, and to what degree? Will anyone gain or benefit from the proposals?</p> <p>The service is not delivered on the basis of marital status. However it could be assumed that a greater impact may be a felt by lone parents/carers. Those requesting Aiming High are not required to provide this detail and individual family circumstances have not been formally assessed when requesting Aiming High support.</p> <p>Whilst this data is not currently collected for families benefitting from Aiming High, national data indicates that 12.3% of adults in Derbyshire County are separated or divorced (2011 Population Census) which is higher than the England average.</p>
	<p>b From existing customer and other feedback including consultation feedback– who is likely to be adversely affected, how and to what degree? Will anyone gain or benefit?</p> <p>Feedback received during consultation identified that lone parents with a disabled child/young person that have limited or no support structure may be more adversely affected by these proposals. Where required, an assessment would better take account of individual family's circumstance and support structures.</p>
	<p>c Are there any ways of avoiding or reducing likely possible adverse impact, what are those actions, and how will they assist</p> <p>Formal assessment would better take account of individual family's circumstance and levels of resilience and ensure support was tailored to meet individual needs.</p> <p>The Derbyshire Local Offer provides information on a range of short break opportunities to which a family can be signposted without the need for an assessment.</p>

	<p>Disabled children, young people and their families are able to purchase additional services through a Framework of Providers. The list of Framework providers is made available to schools, Multi-Agency Teams, Social Care and other agencies within the Derbyshire Children's Trust who may use it to spot-purchase provision on behalf of young people or families. Families who wish to may buy services with their own money, with Direct Payments or with Personal Budgets.</p>
--	--

Non statutory

<p>Poorer and disadvantaged communities and groups, including people who experience financial exclusion</p>	<p>a From existing data and information – who is likely to be adversely affected, how, and to what degree? Will anyone gain or benefit from the proposals?</p> <p>The service is not delivered on the basis of financial status. However it is relevant to note that some parents/carers with disabled children do not work, or cease to work in order to become full-time carers for the child/young person: however data on family income of the children and young people receiving Aiming High services is not available as access to the service does not take account of financial circumstances.</p> <p>It should be noted, however, that those from poorer disadvantaged groups may potentially experience a greater impact as a result of some of the proposals. Families with higher incomes may be able to mitigate any loss in services or grant by purchasing activities and/or support, an option less likely to be available to those on lower incomes.</p> <p>Using the Index of Multiple Deprivation (IMD) 2015, 6.1% of children/young people accessing Aiming High during 2015/16 live in areas which are ranked in the most deprived 10% of the county. A total of 56.7% live in areas which are ranked in the most deprived 50% of the county.</p>
--	--

**IMD Decile: Postcodes of Children / Young People accessing
Aiming High in 2015-2016**



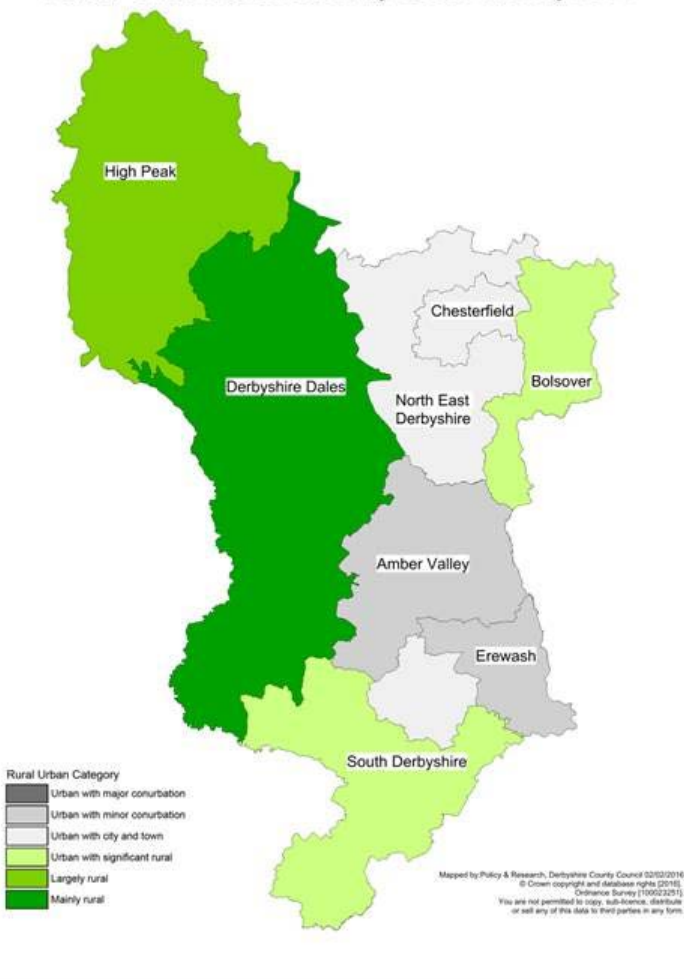
The chart below shows the proportion of children/young people accessing each type of Aiming High provision, giving a comparison of children/young people living in areas which are in the 50% most and 50% least deprived areas of the county.

	<div><div><div><div><div><div></div><div>Least deprived 50%</div></div><div></div><div>Most deprived 50%</div></div></div><div><div><div>Type of support accessed</div><div></div><div><div><div>Residential Activity Weekends</div><div>3.2%</div><div>5.5%</div></div><div><div>Group Activities</div><div>31.3%</div><div>27.5%</div></div><div><div>Combination Offer</div><div>3.2%</div><div>4.0%</div></div><div><div>Short Break Grant</div><div>43.7%</div><div>41.9%</div></div><div><div>Flexible One-to-One</div><div>18.6%</div><div>21.1%</div></div></div><div><div>0.0%</div><div>5.0%</div><div>10.0%</div><div>15.0%</div><div>20.0%</div><div>25.0%</div><div>30.0%</div><div>35.0%</div><div>40.0%</div><div>45.0%</div><div>50.0%</div></div><div>Proportion of children accessing support service</div></div></div><div>Data relating to individual family income or circumstance is not available, however, based on the postcodes of families using Aiming High; more families living in relatively deprived areas are likely to experience an impact from the proposals.</div></div></div>
	<div><div><div><div><div><div>b From existing customer and other feedback including consultation feedback– who is likely to be adversely affected, how and to what degree? Will anyone gain or benefit?</div></div></div><div><div><div>From feedback received during the 2014, 2015 and 2016 consultations it has been identified that the loss of the short break grant provision will have the following impacts on people who are financially disadvantaged:</div></div></div></div></div></div>

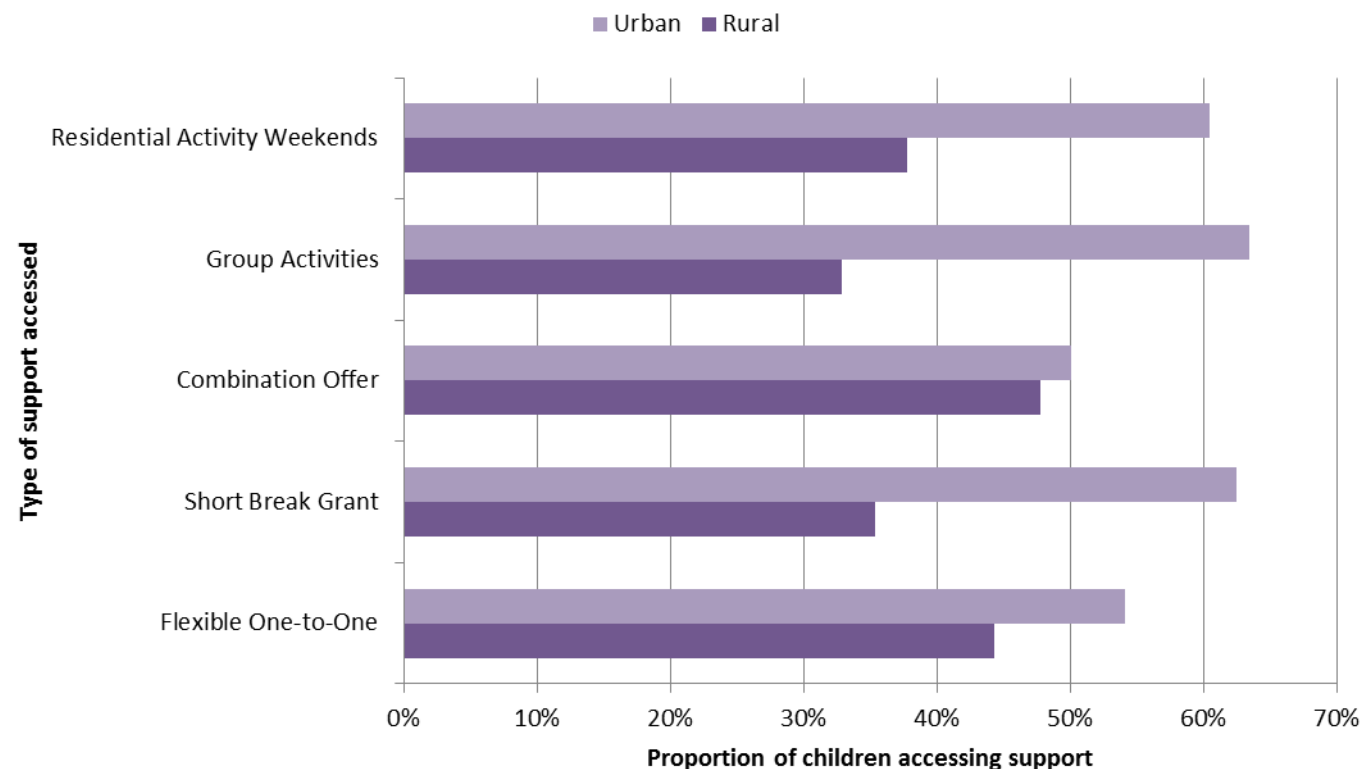
	<p>2014 Consultation: Out of the 227 responses to the consultation, 23 stated that the proposal to cease the short break grant would impact on the opportunity to have a family holiday. 11 stated that the proposal would impact on opportunities to enjoy other short breaks and activities. 10 families identified there would be a reduction in choice of activity for the child/young person. 2 stated an impact on their ability to purchase specialist equipment.</p> <p>2015 Consultation: Out of the 103 responses to the consultation, 22 stated that the proposal to reduce the short break grant and to no longer allow the grant to be used to help fund a family holiday would impact on them being able to provide a family holiday. 5 stated that the proposal would impact on them being able to provide other short breaks and enjoyable activities. 5 families identified there would be a reduction in choice of activity for the child/young person.</p> <p>2016 Consultation: Out of the 64 responses to the consultation, 2 stated the proposal to cease the short break grant would impact on opportunities for short breaks away, whilst another response was concerned that support towards adaptations would not be available. 2 stated that access to support should be means tested and would impact those that are not able to afford support.</p>
	<p>c Are there any ways of avoiding or reducing likely possible adverse impact, what are those actions, and how will they assist</p> <p>Financial status is not a key factor affecting the delivery of the Aiming High provision. A formal assessment of need would take account of individual circumstance, including a family's financial situation, where relevant.</p> <p>Families who have a budget to purchase additional support and services (this might be a Direct payment, Personal Budget or the family's own budget) can access a Derbyshire County Council</p>

	<p>Framework of Providers. These providers are quality assured to promote choice, quality and value for money and to deliver specialised services for disabled children and young people. The list of Framework providers is made available to schools, Multi-Agency Teams, Social Care and other agencies within the Derbyshire Children's Trust who may use it to spot-purchase provision on behalf of young people or families.</p> <p>The Derbyshire Local Offer provides information on a range of short break opportunities to which a family can be directed without the need for an assessment.</p>
Rural communities	<p>a From existing data and information – who is likely to be adversely affected, how, and to what degree? Will anyone gain or benefit from the proposals?</p> <p>With the Peak District National Park covering more than a third of Derbyshire's total land area, and with only a few densely populated towns, the county may be described as largely rural. However, according to the Department for Environment, Food and Rural Affairs (DEFRA) the population in England has increased and the spread of people has expanded or in some cases the population has become more dense. As a result, fewer people are defined as living in rural areas. As demonstrated in the map below High Peak, Derbyshire Dales, South Derbyshire and Bolsover are classified as rural with Erewash, Amber Valley, North East Derbyshire and Chesterfield classified as urban.</p>

Rural / Urban Classification by Local Authority 2011



The chart below shows the proportion of children/young people who live in the rural areas compared to urban areas that have accessed each type of provision in 2015/2016.



Rurality impacts on ability to access services, in particular if transportation is restricted. Ceasing the funding for Aiming High could impact most on those accessing services in Derbyshire Dales, High Peak, Bolsover and South Derbyshire: which in 2015/16 equated to approximately 37% of those using Aiming High support.

61% of children/young people access the Aiming High are from the urban areas of Chesterfield, North East Derbyshire, Amber Valley and Erewash.

	<p>b From existing customer and other feedback including consultation feedback– who is likely to be adversely affected, how and to what degree? Will anyone gain or benefit?</p> <p>Feedback has identified that service users in rural areas could be disadvantaged due to suitable provision being at a greater distance. Service users in more built up urban areas could be disadvantaged due to limited availability of suitable provision.</p>
	<p>c Are there any ways of avoiding or reducing likely possible adverse impact, what are those actions, and how will they assist</p> <p>Formal assessment would better take account of individual family's circumstance and needs, including locality and better ensure that any support was tailored to meet those individual needs and circumstance.</p> <p>Families who have a budget to purchase additional support and services (this might be a Direct payment, Personal Budget or the family's own budget) can access a Derbyshire County Council Framework of Providers. These providers are quality assured to promote choice, quality and value for money and to deliver specialised services for disabled children and young people. The list of Framework providers is made available to schools, Multi-Agency Teams, Social Care and other agencies within the Derbyshire Children's Trust who may use it to spot-purchase provision on behalf of young people or families.</p> <p>The Derbyshire Local Offer provides information on a range of short break opportunities to which a family can be directed without the need for an assessment.</p>

5. Are there any *other* groups of people who may experience an adverse impact because of the proposals?

The proposals may impact on financial viability for some of the voluntary sector currently delivering the service for Derbyshire County Council. This could lead to loss of other services that are delivered by these organisations to Derbyshire families. However, if organisations are successful in identifying other sources of funding, the impact would be mitigated.

Ceasing the Derbyshire Aiming High Offer would result in some disabled children and their families no longer receiving additional services, however, families seeking support would be able to request an assessment from Children's Services in order to determine the type and level of support that may be required.

6. Impact on employees of Derbyshire County Council or prospective employees

Increases in requests for additional support are likely and this will impact on resources in Starting Point, Multi-Agency Teams and/or social care teams. The reduced Aiming High Offer, introduced from 1st April 2016, has not, to date, resulted in an increase in requests for assessments or additional support.

Families have previously expressed concern about the likely impact on MATs and social care resources. Staff would require adequate preparation in anticipation of any changes and the potential for any increase in assessments and services.

The ceasing of the Aiming High Offer would mean the function of processing applications is no longer required, resulting in staffing implications. It is envisaged that the Council's Redundancy, Redeployment, Protection of Earnings and Buy-out of Hours Policies will be adhered to and any displaced staff will be successfully redeployed.

7. Gaps in data

What are your main gaps in information and understanding of the impact of your policy and services? Please indicate whether you have identified ways of filling these gaps.

Detail of the nature and level of disability is not available for all service users.	<p>Although the Council holds a wide range of data about the number of children and young people with special educational needs and/or disabilities in Derbyshire and their needs, there is relatively little detailed information about the specific individual needs and circumstances of children and young people benefitting from Aiming High short breaks and their families. This is because access to Aiming High short breaks does not require a formal assessment of need: Aiming High was set up to enable ease of access to a limited amount of support without the need for formal assessment, as a result records detailing the nature and severity of disability are not consistently held.</p> <p>As a result of the current method of access, detail of individual's needs and difficulties are not consistently recorded in depth.</p>
Ethnicity – Not all service users have ethnicity recorded	More robust record keeping and housekeeping would be necessary to record ethnicity and other individual details.
Lone parents	Fuller assessment of need would identify if there is a lack of support structure for lone parents
Pregnancy/maternity	Fuller assessment of need would identify if there is a lack of support structure for new parents

8 Main Conclusions and Recommendations

CONCLUSIONS

Based on the analysis the following is believed to be of importance and should be noted by decision-makers:

- Three consultations have taken place: in 2014 and more recently in 2015 and 2016 and have been successful in reaching the intended audience and generating a reasonable level of responses. There was a notable decline in the number of responses to the third consultation and this is believed to be because of the proximity of the consultations.
- The overall conclusion is that for a significant proportion of Aiming High users the frequency of opportunities and level of support to enable disabled children and young people to have enjoyable experiences away from their main carers will be reduced by the proposals and that carers will have fewer opportunities to have a break from caring responsibilities.

Whilst not all families will be eligible for services, families would be able to request a formal assessment that would better ensure that any support was tailored to meet the level of need for each individual. Some families with higher levels of need may gain from the proposals as a formal assessment of their needs could result in the need for a higher level of support being identified and subsequently accessed. The Aiming High Offer, whilst offering a limited choice of provider, provides eligible children/young people and their families with a similar level of support. The assessment would better enable progress to be monitored and for young people to, where appropriate, step down from higher levels of support when they have sufficiently developed independence, skills and/or confidence and therefore no longer need as much support.

- In performing the duty to make available sufficient short breaks provision the authority must have regard to the needs of those carers who would be able to provide care for their disabled child more effectively if breaks from caring were given to them; enabling them to undertake education, training, leisure activities, meet the needs of other children in the family more effectively or carry out day to day tasks. In mitigation; families who require additional support would be able to request a formal assessment to identify if support was necessary and the type

and level of support required.

- The authority must provide, as far as is reasonably practicable, a range of services sufficient to assist carers to continue to provide care or to do so more effectively.

A range of services will continue to be available including universal services, targeted services (albeit at a reduced level) and specialist services. The Derbyshire Local Offer provides information on a wide range of specialist groups and activities delivered by VCI providers and DCC youth services located throughout the county and aimed at disabled young people. The authority will want to ensure that DCC targeted youth groups are utilised as effectively as possible to meet the needs of disabled young people.

- The Framework of Providers is available for social care, other services and families to purchase support/provision.
- The SEND Reforms require that planning and review for young people with SEND has a greater focus on preparations for adult life, including the development of social skills and access to their local community.

RECOMMENDATIONS

It is recommended that if the proposal to cease the Aiming High Offer, resulting in Aiming High activity weekends, group activities, flexible one-to-one support and/or grant no longer being available, the following should be implemented:

- Provide specialist short break services to eligible families, only after the completion of a formal assessment carried out by Derbyshire Children's Services that identifies that support is necessary and the nature and level of support required to meet identified needs.
- Review the specialist youth group provision in order to ensure best use of the provision.
- Review content of the Local Offer to ensure availability of information regarding short break activities and support that can be accessed without an assessment by Children's services.
- Maintain a Framework of Providers from whom services for disabled children and young people can be purchased

Whilst not alleviating the full impact of the proposals for all families, some support will continue to be available to families with identified needs. For those with higher levels of need, a formal assessment would better ensure that any resulting support was tailored to meet individual needs and circumstances..

Derbyshire County Council's targeted youth groups located throughout the county and aimed at disabled young people from age 11 years upwards have further capacity to support young people who may not in the future be able to access Aiming High. These groups could be better promoted and a detailed review would address any barriers to further access to these groups and aim to ensure that that full use is made of these opportunities for non-assessed short breaks.

The Derbyshire Local Offer provides information on a wide range of specialist groups and activities that are not funded by the Council and are delivered by VCI providers across the county.

Families who have a budget to purchase additional support and services; a Direct Payment, Personal Budget or the family's own budget, can access the Derbyshire County Council Framework of Providers. The Framework providers is made available to schools, Multi-Agency Teams, Social Care and other agencies within the Derbyshire Children's Trust who may use it to spot-purchase provision on behalf of young people or families.

The ongoing implementation of the SEND Reforms should address how young people with special educational needs and disabilities can best develop and be supported to socialise, access their local communities, engage in ordinary activities and become more independent.

9. Action planning in response to the completed analysis

<i>Objective</i>	<i>Planned action</i>	<i>Who</i>	<i>When</i>	<i>How will this be monitored?</i>
<i>What you want to achieve</i>	<i>What you intend to do</i>	<i>Responsible person or department</i>	<i>Timing of action</i>	<i>Monitoring and review arrangements</i>
Inform all users of Aiming High of Cabinet's decision regarding the future of the Aiming High Offer.	Write to current users Write to providers Publicise changes on the Local offer and DCC website Alert schools and other services through electronic communications.	Commissioning and Partnership	June 2016	DCC Children's Services Commissioning Team, Disabled Children's Services, Locality Manager
Ensure families requiring a higher level of support to enable them to continue to care for their disabled child are able to request an assessment	Prepare services for anticipated additional requests and are able to signpost to information and support where appropriate.	Commissioning and Partnership	June/July 2016	DCC Children's Services Commissioning Team, Disabled Children's Services, Locality Manager
Confirm end of contracts with Aiming High providers.	Written communication with providers	Commissioning and Partnership	June 2016	Commissioning Team
Ensure information is available on the Local Offer regarding activities and breaks that can be accessed without the need for assessment	Review current content of Local offer website	Commissioning and Partnership	Initial review completed by end of July 2016, then ongoing	DCC Children's Services Commissioning Team,
Monitor and review situation following implementation of proposals to determine impact on families and resources and identify future actions	Monitor number of referrals and new assessments and assess impact on resources	Disabled Children's Service and Locality teams	October-December 2016	DCC Children's Services: Disabled Children's Services, Commissioning Team, Locality Manager
Publish a revised Derbyshire Short Breaks Statement	Involve the Derbyshire Parent Carer Voice in reviewing the Derbyshire Short Breaks Statement	Disabled Children's Service/ Commissioning and Partnership	It had been intended to publish a revised statement by 1 st	Disabled Children's Service/Short breaks review group

April 2016

			April 2016. In light of further changes, an interim statement will be published by 31 st May 2016 with a further review and statement by 30th September 2016.	
Ensure that developments in EHC processes and structures including assessment/plan and reviews include considerations of young people' developing social needs and identify strategies or provision to meet those needs.	To be included in considerations at EHC improvement and QA group, Proposals to go the SEND Programme Board	SEND Project Manager/Commissioning	Review September 2016 and again in January 2017	SEND Reforms Programme Board
Ensure appropriate access to specialist youth groups	Examine current use of specialist youth groups and identify future actions	Services for Teenagers, Localities and Commissioning	September 2016	Services for Teenagers/Commissioning

April 2016

10 Monitoring and review arrangements

Please outline what steps will be taken to monitor and review the implementation of proposals if they are agreed here:

Monitoring and review will be overseen by: Commissioning and Partnership, Disabled Children's Services and the SEND Strategic Board.

Involvement of parents will be through the Derbyshire Parent Carer Voice.