

DERBYSHIRE COUNTY COUNCIL

CABINET

20 July 2017

REPORT OF THE CHIEF EXECUTIVE

**COUNCIL PLAN 2017 - 2021
(Strategic Leadership, Culture and Tourism)**

1. Purpose of the Report

To consider and approve the draft Council Plan 2017-2021 for consultation.

2. Information and Analysis

The draft Council Plan 2017-2021, attached at Appendix A, has been drawn up to set the strategic direction for the Council's work over the next four years.

The Plan outlines the Council's ambition, values and the overarching outcomes for Derbyshire that the Authority will work towards with partners and local people. The Plan also outlines the priorities the Council will focus on during 2017-18 to contribute towards these outcomes. These priorities are:

- Work efficiently and effectively
- Unlock economic growth and access to economic opportunities
- Invest in employment and skills
- Repair and improve the condition of Derbyshire roads
- Improve accessibility in vulnerable and rural communities
- Improve social care
- Transform services for people with learning disabilities
- Keep children and adults safe
- Be a good corporate parent for children in our care
- Help children and young people get the best start
- Encourage healthy lifestyles
- Champion local communities
- Support local library services
- Protect local people and communities
- Promote Derbyshire as a global cultural and tourist destination
- Protect and enhance the natural environment

Commitments which summarise the action the Council will take to make progress on each priority are included in the Plan.

Moving forward

It is recommended that the draft Plan be distributed to key stakeholders for consultation. Once all comments have been received, it is anticipated that the final document will be formally signed off by the meeting of full Council taking place on 13 September 2017.

3. Crime and Disorder Considerations

The Plan contains priorities to protect local people and communities and to encourage healthy life styles.

4. Financial, Personnel and Property Considerations

Considerations around delivering significant budget savings, attracting and retaining staff with the required skills, and making the best use of the Council's properties and land are included in the Council Plan.

5. Environmental Considerations

The Council's aim to work with other public services to enhance the physical environment is included in the Council Plan outcomes.

6. Social Value and Equality of Opportunity

The Council's ambitions to enhance the well being of individuals and communities, and to promote equality and diversity have been embedded throughout the Council Plan.

7. Transport Considerations

Considerations around maintaining the county's roads, ensuring road and rail infrastructure support the Council's plans for economic growth, and sustainable travel have been included in the Council Plan.

8. Other Considerations

In preparing this report the relevance of the following factors has been considered: legal and human rights.

9. Key Decision

Yes

10. Call-in

It is not required that call-in be waived in respect of the decisions proposed in this report.

11. Background Papers

Files and supporting papers held in the Policy and Research Division, Chief Executive's Office.

12. Officer's Recommendation

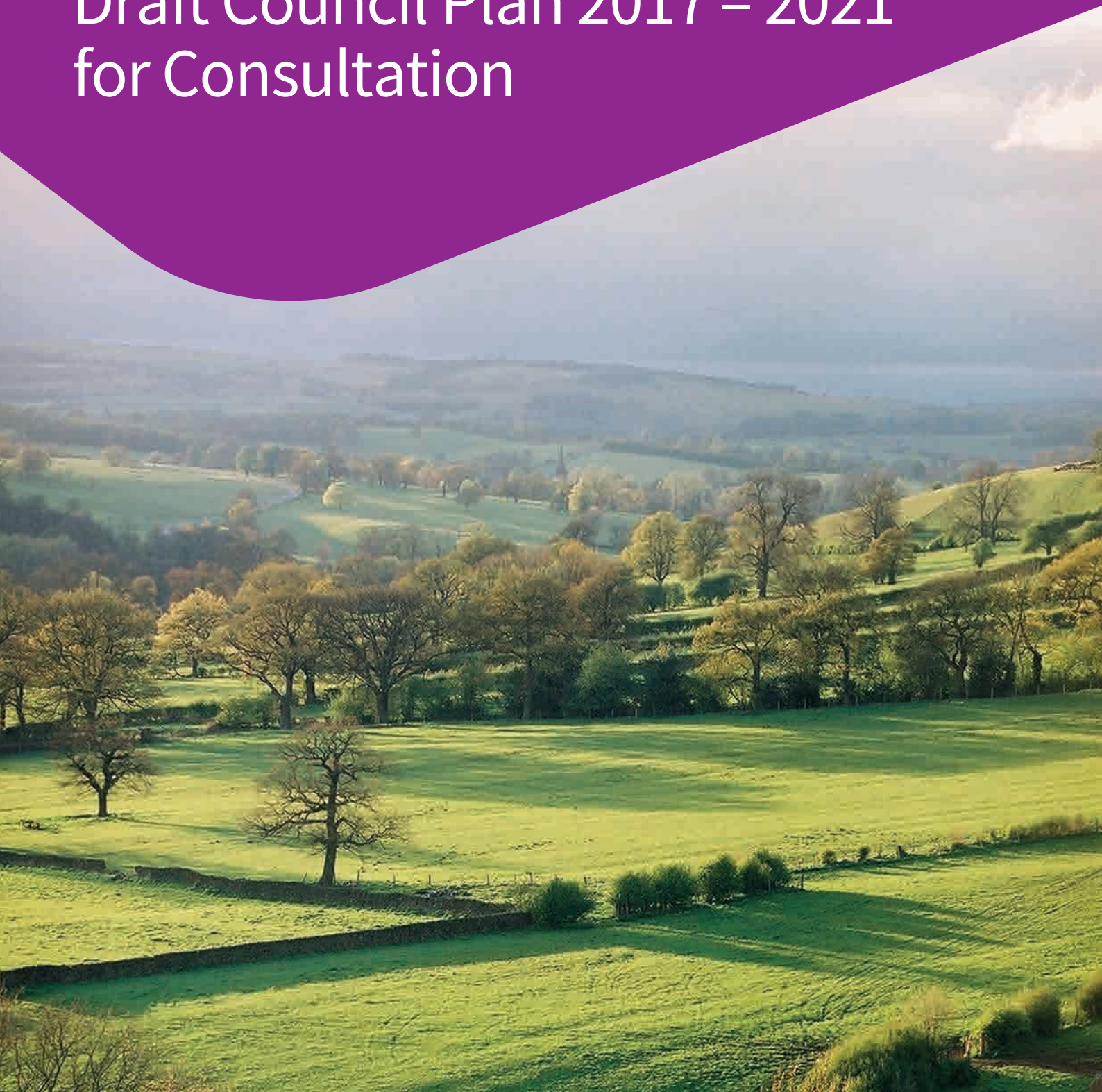
That the draft Council Plan 2017-2021 be approved for consultation.

**Ian Stephenson
CHIEF EXECUTIVE**

**Derbyshire
County Council**

Working for Derbyshire

**Draft Council Plan 2017 – 2021
for Consultation**



Contents

| | Page |
|-----------------------------|-----------|
| 1. Foreword | 5 |
| 2. About Derbyshire | 7 |
| 3. About the Council | 9 |
| Ambition and Values | 11 |
| Outcomes | 11 |
| Priorities | 13 |
| Flagship Projects | 13 |
| 4. Our Commitments | 15 |
| 5. Measures | 46 |
| 6. Have your say | 47 |

Foreword

Welcome to our Council Plan

It is a great privilege to be entrusted with the leadership of Derbyshire County Council following a change of political administration at the local elections earlier this year.

I am, of course, acutely aware that with privilege and trust comes a great responsibility to serve the people of Derbyshire well by delivering high quality services, spending your money wisely and making the savings we need to make as council budgets reduce and our population ages.

This Council Plan is entitled ‘Working for Derbyshire’ and it sets out how we will do just that.

It’s not all about the council doing everything. We are fortunate in Derbyshire that there are so many people who are willing to give their time to make their community a better place. Over the next four years that’s a strength we will build on by harnessing the skills and local knowledge of volunteers to support local services.

We’ll also find new ways to help people to help themselves and others in their community, have high aspirations, take control of their lives and become less dependent on council services.

And whilst balancing our budget and spending every penny carefully is a priority, not everything is about money. Derbyshire County Council does not exist in a vacuum. This plan also shows how we will work more closely with our partners in district and parish councils, the voluntary sector and the health service to ensure we maximise all our resources and provide better joined-up services.

Derbyshire is a wonderful place to live, visit and work. Our ambition is to make it even better through creating the right environment for businesses to provide meaningful local jobs, championing Derbyshire on the national stage and promoting our county as an outstanding cultural and tourism destination.

This document is part of our commitment to being open, honest and accountable to our council tax payers. We are also committed to listening to local people to make sure we are taking account of the things that matter to you most. So if you have any comments on our Council Plan we would be very pleased to hear from you.

Kind regards

Councillor Barry Lewis
Leader, Derbyshire County Council


Derbyshire County Council’s Cabinet.

Left to right: **Councillor Tony King**, Cabinet Member for Economic Development and Regeneration, **Councillor Alex Dale**, Cabinet Member for Young People, **Councillor Carol Hart**, Cabinet Member for Health and Communities, **Councillor Simon Spencer**, Deputy Leader and Cabinet Member for Highways, Transport and Infrastructure, **Councillor Barry Lewis**, Council Leader and Cabinet Member for Strategic Leadership, Culture and Tourism, **Councillor Jean Wharmby**, Cabinet Member for Adult Care, **Councillor Angelique Foster**, Cabinet Member for Council Services




About Derbyshire

A county with a rich, diverse heritage with spectacular landscapes such as the Peak District National Park and other unique attractions


 Derbyshire is a largely **rural** county with many sparsely populated areas alongside larger built-up urban conurbations.

Around **9 million** people live within easy reach of Derbyshire in the surrounding cities of Derby, Sheffield, Nottingham, Manchester and Leicester.

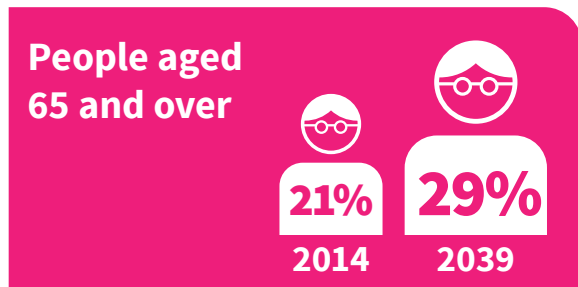


 Derbyshire's economy is worth **£14.4 billion** and has grown significantly over recent years.

28 market towns play a significant role in the local economy. Chesterfield is the area's largest town, with a population of 104,000.

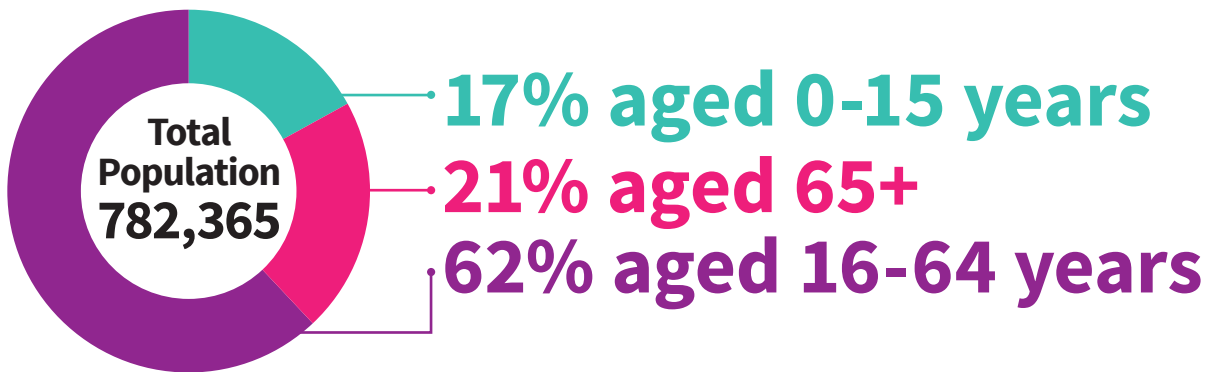


 Derbyshire's population is expected to increase by **10%** by **2039**.



 Population growth varies across the county ranging from just **5.6%** in Derbyshire Dales to **20.4%** in South Derbyshire.

4.2% or **32,652** people living in the county are from Black and Minority Ethnic groups.





About the Council



Has **64** elected members who represent the residents of Derbyshire

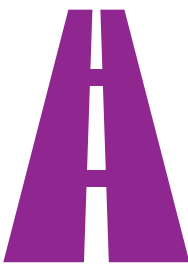


Runs **nine** household waste recycling centres that dispose of more than **395,000** tonnes of waste each year

Employs more than **13,000** people and has a budget of more than **£500** million



Supports **423** schools with **8,000** teachers, teaching **103,000** children



Maintains almost **3,300** miles of roads with **2,800** miles of footway and resurfaces **150** miles of road each year



Runs children's centres and supports **137** day nurseries, **157** pre-schools, **137** out of school clubs, **2** creches, **26** holiday schemes and **687** childminders providing early years support

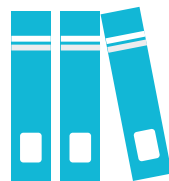
Looks after **1,100** bridges, **460** major footbridges, **3,000** rights of ways and over **600** miles of retaining walls



Provides services to almost **17,000** older, vulnerable and disabled people and supports **21,000** carers across Derbyshire



Maintains **90,000** streetlights, more than **250** traffic signals and **7,600** illuminated traffic signs



Runs **45** branch libraries, **2** mobile libraries, **1** museum and a records office that welcomes over **2** million visits each year



Our ambition

What we hope to achieve over the next four years

We will strive to be:

“An efficient and high performing council delivering high quality, value for money services”

Our values

The core beliefs that will underpin the way we do things

We will:

- **Be open, honest and accountable** ensuring the decisions that we make are transparent
- **Spend money wisely** making the best use of the resources that we have
- **Work with partners and local communities** because we know we cannot tackle complex problems on our own
- **Listen to local people** ensuring that we are responsive and take account of the things that matter most

Outcomes

The outcomes we will be working towards with our partners and local communities

We want Derbyshire to have:

Resilient and thriving communities where local people work together, in new and dynamic ways with public services

Happy, healthy people and families with solid networks of support, who feel safe and in control of their personal circumstances and aspirations

A strong, diverse and adaptable economy which makes the most of Derbyshire's rich assets and provides meaningful employment opportunities for local people

First class public services which enhance the educational, cultural, physical and social environment of Derbyshire and make it **a great place to live, visit and work**



Priorities for 2017/18

Our priorities and what we will do to improve outcomes

- Work efficiently and effectively
- Unlock economic growth and access to economic opportunities
- Invest in employment and skills
- Repair and improve the condition of Derbyshire roads
- Improve accessibility in vulnerable and rural communities
- Improve social care
- Transform services for people with learning disabilities
- Keep children and adults safe
- Be a good corporate parent for children in our care
- Help children and young people get the best start
- Encourage healthy lifestyles
- Champion local communities
- Support local library services
- Protect local people and communities
- Promote Derbyshire as a global cultural and tourist destination
- Protect and enhance the natural environment

Flagship projects

Vital cross cutting projects which we will be progressing over the next four years

- Explore the use of **new delivery and commissioning models** across the council to achieve service priorities
- Restart our **£30 million Care Programme** to provide new modern care homes for the county's older people
- Work with communities to secure better outcomes for less by developing the **thriving communities approach**
- Work with partners to deliver the **One Public Estate Programme** making more efficient use of the Council's properties and assets
- Build and sell homes on council land through our **Derbyshire Development Company** securing income to invest in other council services

< Meadow View in Darley Dale is Derbyshire County Council's award-winning specialist community care centre.



Work efficiently and effectively

With a budget of over £500 million and more than 13,000 employees, it is important the services we provide are high quality and offer excellent value for money. Ensuring the Council balances its budget is critical and this means we will be working hard to deliver a significant programme of budget savings over the next four years. Making the best use of all the resources we have at our disposal is therefore increasingly important and exploring creative ways in which can deliver better services for less will also be key.

Listening to local people and ensuring our services are responsive and meet local needs is fundamental. Our ambitions can only be achieved by working in partnership with the people and communities we serve and our partners in the public, private and voluntary sectors, fulfilling our role as local leaders and changing the way that local people engage with services and receive support.

Over the next four years we will be actively pursuing new delivery and commissioning models to achieve our priorities. We will also be looking at the way in which the council works, reviewing structures and making sure they continue to be fit for purpose. We recognise the important role our staff play in delivering services and we will continue to develop employment practices to support organisational change, whilst managing the workforce implications arising from our programme of budget savings.

We will continue to make the most of all the assets in our control, whether this is identifying ways in which we can build and sell homes on council land through our Derbyshire Development Company or making the most efficient use of the council's properties and land through the One Public Estate Programme.

Ensuring that the decisions we make are transparent and can face external scrutiny in the current climate is also important. Our plans to establish a value for money board to examine and review council contracts, are well underway.

Our commitments – we will

- Work to ensure Derbyshire is a high performing council by delivering high quality, value for money services
- Build better relationships between councils, businesses and the voluntary and community sector
- Review council structures to ensure they are fit for purpose
- Establish a value for money board to review council contracts



Unlock economic growth and access to economic opportunities

Driving economic growth and creating more job opportunities for local people is a vital part of our ambitious plans for the future.

We will grasp every opportunity to achieve this aim, working with existing businesses to help them grow whilst actively pursuing and attracting new business and investment into the county. We will do this by providing high quality business support, identifying new markets for export and developing international trade links that support local supply chains.

We will work hard with our partners across Derbyshire, the wider D2N2 region and the Midlands Engine to create the right conditions for growth ensuring economic advantage for local businesses and people, leading up to, and post Brexit. We will deliver major regeneration projects such as Coalite, Buxton Crescent and Infinity Park, to create jobs, houses and improved infrastructure across the county. We will also work with our partners to develop growth strategies based on current HS2 proposals, maximising the opportunities for local jobs and business while minimising its adverse effects.

We will ensure that Derbyshire homes and businesses, including those in rural areas across the county, get full broadband coverage and we will make sure our infrastructure – road, rail and digital - is able to support our plans for growth, securing investment where we can.

Exploring opportunities to develop low carbon vehicle infrastructure across the county, ensuring our plans for growth are future proofed will also be a focus moving forward.

Our commitments – we will

- Help businesses to start, survive and thrive, ensuring they have access to high quality business support programmes
- Attract new businesses and other investment into Derbyshire, setting out plans in our new Inward Investment Strategy
- Deliver major regeneration projects such as Coalite, Buxton Crescent and Infinity Park
- Ensure that Derbyshire maximises the opportunities afforded by HS2 for local people and businesses
- Improve transport and highways infrastructure and develop the key cycle network to connect local people to jobs and leisure opportunities
- Deliver the A61 Growth Corridor Strategy to support major housing and employment growth
- Ensure Derbyshire homes and businesses get full Broadband coverage
- Explore opportunities to develop low carbon vehicle charging infrastructure across the county

“We will work hard with our partners across Derbyshire to create the right conditions for growth”

Councillor Tony King,
Cabinet Member for Economic Development and Regeneration

< Markham Vale near Chesterfield.



Invest in employment and skills

A skilled workforce is essential in ensuring local businesses continue to grow and compete in an ever increasing global market place. Investing in the appropriate level and availability of skills is therefore fundamental to the future prosperity of the county.

Although Derbyshire has achieved global recognition in key sectors such as advanced manufacturing, the visitor economy, digital and creative industries, there is much work to do to tackle the prevailing low skill and low wage economy. Our plans, to work with schools, colleges, universities and other training providers to provide more opportunities for people of all ages to develop vocational and employability skills and gain qualifications, will ensure that the skills needed by businesses are available locally.

We want to make it easier for people of all ages, including care leavers and those with disabilities, to find and access suitable employment. We will create apprenticeships within the Council and work with our partners to champion, support and create work experience and apprenticeship schemes across the county. We will also work with our suppliers and contractors to encourage them to create new apprenticeships for every £1m we spend with their organisation.

Our commitments – we will

- Create 1,000 new apprenticeships, work experience placements and second chance apprenticeships within the Council
- Encourage our suppliers and contractors to create new apprenticeships
- Implement a school leaver and graduate recruitment programme, encouraging employers in the county to do the same
- Work closely with education providers to improve the quality and access to careers information, advice and guidance
- Work with schools, colleges, universities and other training providers to provide more opportunities for people of all ages to develop skills and gain qualifications
- Support businesses to innovate, access new markets and create new skilled employment opportunities
- Support projects, such as B-line and Wheels to Work, that help young people get to work and training

“We will champion and create apprenticeship schemes and **opportunities for people of all ages**”

Councillor Angelique Foster, Cabinet Member for Council Services

“The condition of roads in Derbyshire is a top priority and **we’ll be investing an additional £6 million**”

Councillor Simon Spencer, Deputy Leader and Cabinet Member
for Highways, Transport and Infrastructure

Repair and improve the condition of Derbyshire roads

The condition of roads in Derbyshire continues to be a top priority for local people. With over 3,280 miles of road and associated bridges, street lights and footways, ensuring there is a safe, resilient and well maintained highways network for those who visit or work in the county is a challenge.

Our plans to tackle the state of the county’s roads include an additional £6 million investment into preventative road and footway maintenance over the next four years. We will also minimise congestion and its impact on journey times through better coordination of all works undertaken on the highway via our new Highways Hub.

We also want to ensure that our road infrastructure, essential to the economic prosperity of Derbyshire in providing access to work, health, education and leisure is fit for purpose. This means we will look to build new roads and highways infrastructure in areas where there is the greatest need.

Our commitments – we will

- Tackle the state of the county’s roads and invest an additional £6 million into road maintenance
- Reduce the number of potholes and streetlights requiring repair
- Develop plans to build a new bypass in Ashbourne
- Minimise disruption to road users and tackle congestion across the county through our new Highways Hub





Improve accessibility in rural and vulnerable communities

Derbyshire is a county of strong geographical and social contrasts including large rural areas which are home to 27 per cent of Derbyshire's population. These areas, alongside former mining communities, have a unique set of challenges that can exacerbate the social isolation of vulnerable people. Rural living also presents significant challenges for low income families, whose children generally do less well at school.

Our plans will be based around ensuring that local people can access the services and activities that they need including health and social care, shopping, social activities as well as travelling to work, education and training. We will do this by supporting and improving transport links including bus services, and further developing our Derbyshire Connect bus service with community transport and other transport providers.

Greater independence will contribute to improved general wellbeing amongst our most vulnerable residents. Identifying our most vulnerable children and ensuring that small rural schools continue at the heart of communities, will help our young people achieve the best outcomes possible.

We will continue to support our home library service, including providing access to e-resources such as e-books, for those who are vulnerable and unable to access our services in any other way.

Our commitments – we will

- Develop our Derbyshire Connect bus service, particularly to help people who find it difficult to use conventional bus services
- Further develop the Total Transport approach, ensuring more integrated, efficient and cost effective transport services across the health, education and social care sectors, to increase choice and quality
- Continue to support subsidised bus routes maintaining important links that cannot be run as commercial routes
- Spend £500,000 a year on extra support for subsidised transport
- Work with small rural schools to develop strategies which better support their most vulnerable children
- Continue to support our home library service for older and isolated people in Derbyshire

“We will ensure our rural communities are high on the agenda and **can access the services they need**”

Councillor Simon Spencer, Deputy Leader and Cabinet Member for Highways, Transport and Infrastructure



“We will do more to
**coordinate the different
services** that support older people”

Councillor Jean Wharmby, Cabinet Member for Adult Care

Improve social care

With the number of older people in Derbyshire aged 65 and over set to increase by 10% over the next five years, more people will need support to live well. Supporting people to be independent at home, as long as possible, has significant benefits for people's health and wellbeing and is less costly.

Our plans for improving social care will see us working with health partners to reduce hospital admissions, ensuring people can make a timely return from hospital to their homes and communities. We will also work with our partners to increase the recruitment and retention of high quality staff, which is one of the biggest challenges we currently face. Many different services currently work together to support people to live independently and we will do more to coordinate services and keep a better eye on the welfare of older and vulnerable residents.

Supporting people to live independently relies on the thousands of carers who give up their time to help others. For many full time voluntary carers, providing support to a family member or friend can be stressful, placing huge demands on individuals. Our plans will offer increased support to carers so that they are able to take time out and improve their own health and wellbeing.

If older and disabled people can no longer live at home we want to ensure they are supported and cared for in modern care homes which contribute to improving their quality of life. As the number of older people rises, we recognise that there will be growing numbers of people with dementia in Derbyshire, and we will work with health partners to roll out specialist services for them across the county.

Our commitments – we will

- Invest £10m and work in new ways with health partners, to reduce avoidable hospital admissions and delayed hospital discharges
- Restart our £30m Care Programme to provide high quality and affordable residential, nursing and extra care accommodation across the county
- Work with partners to recruit and retain high quality social care staff
- Ensure carers in Derbyshire have access to the support, advice and information to best meet their needs
- Develop support services for people with Dementia to help them live well and independently
- Carry out 5,000 Home Health Safety and Welfare Checks for the increasing number of vulnerable over 80s in local communities



“People with learning disabilities and autism should **feel safe and supported** within their local community”

Councillor Jean Wharmby, Cabinet Member for Adult Care

Transform services for people with learning disabilities

In Derbyshire, there are still too many people with complex learning disabilities and autism who experience long-stays in hospital or in institutional care. In many cases, providing support through multi-agency care planning within a community setting would give people with learning disabilities more choice and control over their own lives.

People with learning disabilities and autism should feel safe, supported and an integrated part of their local community. Our plans to transform the way in which services are provided will see us working alongside people with a learning disability or autism and their carers to develop a new model of support, moving away from more traditional models of service delivery. This new approach will allow people to make choices about how they spend time during the day, enabling friendships and building social networks by providing greater access to a wide range of activities, hobbies and sports and improving inclusion within their local community.

Not enough people with learning disabilities in Derbyshire are in paid employment and we also need to do more to increase the range of voluntary and employment opportunities that are on offer.

We will also work harder to ensure a smooth transition for young people with a learning disability or autism and their families as they approach adulthood. Promoting opportunities to maximise independence, ensuring young people have a positive experience as their support changes from children's to adult services, will be a key focus.

Our commitments – we will

- Transform services, working with carers and people with learning disabilities to co-produce a new model of community based support
- Reduce the number of people with complex needs in institutional settings
- Ensure there is a range of appropriate accommodation and housing options, to allow people with a learning disability to live as independently as possible
- Increase the number of people with learning disabilities into meaningful paid employment and volunteering
- Make the journey from children's to adult services as smooth as possible through early planning and support that maximises opportunities for independence



“Keeping vulnerable people safe is at the heart of everything we do”

Councillor Jean Wharmby, Cabinet Member for Adult Care

Keep children and adults safe

Keeping children, young people and vulnerable adults safe from harm, abuse and neglect is a priority for everyone, and we will put this responsibility at the heart of everything we do.

We know that parents' wellbeing is vital to ensuring children are able to live safely with their families, and we will work with partners and communities to address key issues such as domestic violence, mental ill health and substance misuse. We will also expand our work with partners and communities to enhance children and young people's emotional wellbeing and resilience.

The number of children who need to be protected or taken into our care is rising and part of our response will be to maintain and strengthen support for children on the edge of care so they can remain with their families. We are also alert to emerging and new areas of risk and will develop strategies in relation to internet safety, safe travel, radicalisation and exploitation.

We work hard with a range of partners to prevent, detect and safeguard vulnerable adults from abusive behaviour. Our approach will be to continue to make adults with care and support needs the focus of all we do. We will further expand our advocacy service so that vulnerable people have their voice heard in important decisions that impact on their lives. We will also continue our work with partners and residential care providers to ensure service standards in residential homes are met, to reduce the likelihood of safeguarding issues arising.

We will also further expand our safe places scheme, which allows people with learning disabilities to go somewhere safe if they feel scared, are lost or in trouble when out in communities across Derbyshire.

Our commitments – we will

- Work with communities to address parents' wellbeing, particularly around issues such as domestic violence, mental ill health and substance misuse
- Work with partners and communities to enhance children and young people's emotional wellbeing, resilience and ability to protect themselves from modern day risks
- Improve our range of support for children on the edge of care
- Work with partners and residential care providers to reduce the incidence of safeguarding issues in older people's residential homes
- Improve advocacy services for vulnerable people so they have their voice heard
- Expand our safe place scheme for people with learning disabilities



“Looking after children who cannot live with their own family is **one of the council’s greatest responsibilities**”

Councillor Alex Dale, Cabinet Member for Young People

Be a good corporate parent for children in our care

Most children and young people in Derbyshire enjoy happy and successful lives living within their own families. Whilst we work hard with partners to help prevent family breakdown and support parenting, so that children can stay with their families and communities where it is safe to do so, this is not always possible. Each year a small number of children are taken into our care so that we can ensure their safety and wellbeing.

Being a good corporate parent to the 660 children we currently have in our care is one of our most important priorities. The time that children spend in our care should be a positive experience, with plenty of opportunities to develop skills and confidence which allow them to achieve their full potential. We will focus our efforts on providing stable and nurturing relationships, fundamental to long term wellbeing, and ensuring we have sufficient good quality placements which meet the needs of each and every child.

As children in care generally gain fewer qualifications compared to children living within their own families, we will encourage and support learning, from early years through to further and higher education. We will do this by targeting and tailoring the support we provide.

We will also help children in care to prepare for adult life, and improve support for care leavers, by providing it for longer, so they can be safe, healthy and achieve their aspirations.

Our commitments – we will

- Improve the quality and choice of adoption, fostering and residential care placements
- Improve the quality of care planning to promote stability for children in care
- Support children in care to do their best at school, by providing targeted support, raising aspiration and reducing absence and exclusions
- Improve the wellbeing of children leaving care by increasing suitable accommodation, providing access to work experience and opportunities, and developing young people’s financial skills
- Continue to support looked after children and care leavers into employment
- Make available the offer of support for children in our care up to the age of 25



Help children and young people get the best start

Growing up safe, healthy, able to learn and play an active role in their local communities is an ambition we have for all children in Derbyshire. We all - parents, families, carers, communities and services - working together, have a role to play in ensuring all children have the support they need.

From conception to early adulthood, the council and partners provide a range of advice, information and support to children and families. Services build on the strengths that already exist in families which enable children to grow up to be independent and resilient adults. Where issues do arise, early help services will be available to identify them and offer support promptly, so that problems do not get worse.

We can and need to do more. Given the vital role our early help services play in families lives, we will be taking a new look at the way the council and partners work together to address local need. Our plans to increase the efficiency of support services for children and families, will see us delivering services in a more co-ordinated, timely and accessible way.

We also want to be sure that disabled children grow up with the right support that will give them the same opportunities as other children, to lead fulfilling lives. We will explore alternative models of support for parents of disabled children and improve our planning and information sharing.

We will also continue to deliver our Troubled Families programme, offering targeted support for families experiencing multiple problems, so that they can address the issues affecting their wellbeing and move on with their lives.

Our commitments – we will

- Work with all partners to model a new approach to delivering support services for families with young children aged 0-5 years
- Work with schools and partners to redesign early help services for families
- Explore alternative models of support for parents of disabled children
- Help 4,510 families through our Troubled Families Programme

“We will support parents and other agencies to help children reach their full potential”

Councillor Alex Dale, Cabinet Member for Young People

“We will support people to take responsibility for their own health and well-being”

Councillor Carol Hart,
Cabinet Member for Health and Communities

Encourage healthy lifestyles

Encouraging individuals to take personal responsibility for their own health and promoting more active lifestyles brings many positive health benefits for local people and communities in both the short and long term.

We are rethinking our current offer with ambitions to create eight wellness hubs across Derbyshire, building on community assets such as local libraries, which currently act as health and wellbeing zones, and taking advantage of digital innovation to provide pro-active advice, skills and support which will enable people to live healthily. Hubs will offer services which help prevent ill-health by promoting the benefits of healthy eating, stopping smoking and reducing alcohol consumption as well as linking into services to address underlying issues which affect health.

We will also encourage and support people to be more active in their day to day life and participate in sports and other leisure activities. Our plans to offer sports action grants to local voluntary organisations and clubs recognises the valuable role they play in supporting healthy lifestyles and will help widen the range of local sports activity on offer whilst boosting participation.

We also want to create environments where more people live in a healthy warm home and can walk or cycle, rather than rely on the car, to get to school, work or visit friends and family and we will work with businesses to improve the health and productivity of their workforce.

Acknowledging positive mental health is important so we will work with our partners to raise awareness, offering help and appropriate support for people when required. Recognising mental health issues as early as possible can help aide a positive recovery and prevent further health problems so we will particularly focus on working with young people to allow them to make positive choices about their wellbeing.

Our commitments – we will

- Provide sports action grants to local voluntary organisations and clubs
- Create eight wellness hubs across the county to support people in making changes to their lifestyles that will improve their health and wellbeing
- Champion positive mental health and wellbeing with a particular focus on young people
- Create healthy environments which encourage active lifestyles
- Support businesses so they have an active, healthy and productive workforce
- Encourage more active lifestyles, developing more opportunities for walking, cycling and public transport

“Local people know what’s best for their community and **we will encourage everyone to get involved**”

Councillor Carol Hart, Cabinet Member for Health and Communities



Champion local communities

Derbyshire’s communities are better places to live thanks to the commitment and passion of local people who help each other, run local clubs and events and care about the place where they live. Opportunities for people to make friendships and find networks of support through interesting and fun activities enrich local neighbourhoods, create a feeling of belonging and provide a safety net for people during times of difficulty.

We know that the people in local communities have great ideas about what would work well for their neighbourhood and we want to put local people at the heart of what we do. Working in partnership to find the best local solutions, we will listen to what people need and work with them to help communities in Derbyshire flourish and thrive. Providing local services which are fair and affordable, alongside developing new and creative ideas for locally based support which is community-led are all part of our plans for the future.

We will work to build a dynamic and positive relationship with local people, where involvement, action and activity can freely grow. Through our thriving communities approach we will also find new ways to build confidence and capacity, helping people to help themselves and have high aspirations, take control of their lives and be less dependent on public services.

We want to make sure that people have the chance to get involved in positive experiences which enhance their lives and that young people in particular can find things to do which open the doors to opportunity and prosperity.

Our commitments – we will

- Work in partnership with local communities to co-design and secure better services for local people
- Learn what works well and continually adapt our services to make the most of the strengths and assets of local people, families and communities
- Work creatively with local people and groups to establish new ways of supporting community activity, for example by enhancing and expanding the use of community buildings and outdoor spaces
- Create vibrant networks of local staff and local people who work together to tackle local problems
- Ensure that our charging policies, for example for parking, are fair
- Offer residents the opportunity to access energy at a fair and sustainable price through our partnership with a licensed energy supplier
- Provide 750 youth activity grants and community action grants for local voluntary organisations and clubs



Support local library services

Libraries are valued neutral spaces in the heart of the community where people meet, learn new things, make friends and find out about local groups and projects.

We recognise the vital role that our network of 45 public and two mobile libraries play, not only in the success and wellbeing of the communities they serve, but also supporting those who are lonely or at risk of isolation. We will work hard to protect the wide range of services our existing libraries provide to communities across Derbyshire increasing the use of self-service technology where appropriate. We will also look to build new libraries in Glossop and Belper.

Ensuring libraries remain as trusted and valued local hubs of community activity will ensure that they serve as a gateway to a range of services, act as an invaluable source of information for local people, as cultural venues, an educational resource for young people and a lifeline for our more vulnerable residents.

Our commitments – we will

- Develop our strong network of local libraries recognising the important role the service has to play in local communities
- Promote libraries as a focal point and hub in local communities
- Build new libraries in Glossop and Belper
- Encourage the wider use of libraries by people with learning disabilities, people with dementia and children and families

“Libraries are at the heart of the community and we will do all we can to protect them”

Councillor Barry Lewis, Council Leader and Cabinet Member for Strategic Leadership, Culture and Tourism

“Achieving our **ambitions for safer communities** depends on everyone playing their part”

Councillor Carol Hart, Cabinet Member for Health and Communities



Protect local people and communities

Derbyshire continues to be one of the safest places in the country and the low level of crime and anti-social behaviour is testament to our long history of partnership working with colleagues in police, fire, health and probation services.

Whilst crimes such as theft, burglary and anti-social behaviour have reduced in recent years, violent crime, domestic abuse, drugs and alcohol misuse and rogue trading continue to be a challenge. These alongside new and emerging threats - cyber-crime, terrorism, hate crime and exploitation - bring with them new challenges which we need to address.

Achieving our ambitions for safer communities depends on everyone playing their part and working together to find local solutions to local problems. We recognise that we can help keep people in Derbyshire safer on our streets and in their homes by continuing our work with partners, improving local networks and encouraging local volunteer action.

Our plans to empower local volunteers and community groups include a commitment to provide the additional resources and money needed to recruit volunteers, expand community safety projects, develop Neighbourhood Watch Schemes and raise awareness of rogue traders, scams and online fraud.

Road traffic accidents cause avoidable injury and death and we will continue our work with partners to make travel safe for road users and pedestrians. This will involve awareness raising, delivering education and training and making roads safer.

Our commitments – we will

- Develop joint approaches to address counter terrorism working with police and partners
- Work with partners to reduce alcohol related violent crime, including domestic and sexual abuse, through the delivery of the Substance Misuse Strategic Plan
- Continue to promote and develop the Trusted Trader Scheme, supporting vulnerable Derbyshire residents through the Derbyshire Scam watch project
- Offer grants to 500 community safety projects, neighbourhood watch schemes and anti-fraud initiatives
- Continue to reduce the number of people killed and seriously injured on Derbyshire roads



Promote Derbyshire as a global cultural and tourist destination

Derbyshire's distinctive landscapes, diverse communities and rich industrial and rural heritage make it unique. Such exceptional assets inspire and support a variety of cultural experiences, including festivals, arts and sporting events. Culture and tourism is an essential part of the local economy, employing more than 27,000 people and worth more than £1.9 billion in visitor spend.

We want Derbyshire to continue to be recognised as the key national and international tourist destination it is, with more visitors choosing to stay longer. We will do this by linking and better promoting Derbyshire's heritage, cultural and environmental assets - the Peak District, Chatsworth, Creswell Crags, the National Forest, Trent Valley, Elvaston Castle and the Derwent Valley Mills World Heritage Site – as well as attracting large scale events into Derbyshire to create a stronger, more varied and unique tourism offer across the county. This will help to ensure that both local people and visitors enjoy Derbyshire's many attractions whilst at the same time, strengthening the visitor economy, with more being spent locally on accommodation, food and drink, entertainment and shopping.

Throughout Derbyshire we want people to enjoy their local natural and built environment and play a part in its improvement. We also want young people in Derbyshire to be proud and knowledgeable of their local area and its history and we will encourage participation in events that strengthen and celebrate local heritage, cultural distinctiveness and diversity of their communities.

Our commitments – we will

- Link and better promote Derbyshire's heritage, cultural and environmental assets, developing the county as a global tourist destination
- Market Derbyshire's unique offer to overseas visitors developing links to new markets such as China and Japan
- Support Creswell Crags to achieve World Heritage Status
- Further develop the Derwent Valley Mills World Heritage Site through our Vital Valley project using £1.5 million funding from the national Great Places Scheme
- Develop additional activities that engage young people and communities in celebrating and preserving their heritage
- Attract large scale events such as Eroica, Tour of Britain and the RHS Chatsworth Flower Show into the county

“We'll work hard to protect and promote Derbyshire's rich natural and historical assets”

Councillor Barry Lewis, Council Leader and Cabinet Member for Strategic Leadership, Culture and Tourism



Protect and enhance the natural environment

Derbyshire has a unique rich and varied natural environment – from gritstone moorlands, limestone dales, lowland farmed landscapes to industrial and market towns. Protecting and enhancing these diverse assets for future generations whilst balancing the needs of communities today, is crucial.

We will continue to play our part, ensuring those assets - country parks, canals, cycle routes and rights of way - we manage and support, are sustainable. Promoting environment and countryside sites, particularly those at Elvaston, Cromford and Shipley, to help generate and maximise income, will be a priority. Our ambitious plans for the Trent Valley will also see us working with partners to develop a long term vision and strategy, which will deliver significant environmental, social and economic benefits to the area, once completed.

Climate change is an increasing threat. We will continue to support communities by preparing for potential changes such as increased flood risks, warmer summers or extreme weather events. Improving air quality, which we know will bring significant benefits to the environment and local people will be a key area of focus through regulation, effective transport planning, infrastructure development and encouraging behaviour change. We will also explore how we can work with local communities and partners to achieve an affordable, secure and low carbon energy supply for Derbyshire.

As a county we need to further reduce the amount of waste sent to landfill and we will continue to work in partnership to promote waste reduction and encourage reuse and recycling initiatives.

Our commitments – we will

- Promote Derbyshire’s environment and countryside sites to help generate sustainable income and support tourism
- Continue working in partnership to increase recycling and composting to reduce the waste sent to landfill
- Deliver a large scale waste treatment and education centre at Sinfin Lane in Derby
- Reduce harmful emissions from our own buildings
- Work with communities to increase their resilience to flooding
- Develop a long-term vision and strategy for the Trent Valley area that can deliver significant environmental, social and economic benefits for the area
- Work with partners and local people to reduce air pollution in the county to protect the public’s health

“Derbyshire’s landscape is unique and we’re committed to making the county even cleaner and greener”

Councillor Simon Spencer, Deputy Leader and Cabinet Member
for Highways, Transport and Infrastructure

Measures

The indicators we will use to monitor how well our outcomes for Derbyshire are being achieved

School readiness
GCSE attainment
Schools Ofsted judgements
Young people not in education, employment and training
Employment rate
Economic growth
Roads where maintenance is required
Causalities on the county's roads
Carers' quality of life
Admissions to residential care homes
Delayed discharges from hospital
Adults with a learning disability living in stable accommodation
Safety of vulnerable people
Wellbeing of residents
Physical activity participation rates
Obesity of children
Children protected by a child protection plan
Children in care
Recorded crimes
Waste recycling rate

The key indicators we will use to measure the council's progress

Budget savings
Sickness absence
Apprenticeships within the Council
Complaints upheld by the Local Government Ombudsman
Emissions from our estate and operations

Have your say

We would very much welcome your views on our priorities and the Council Plan.

If you would like to discuss any part of it, are interested in getting involved, have any comments or require more information then please contact:

Policy and Research Division
Derbyshire County Council
County Hall
Matlock
Derbyshire DE4 3AG

Email: **policy@derbyshire.gov.uk**
Telephone: **Call Derbyshire: 01629 533190**

