

**DERBYSHIRE COUNTY COUNCIL**

**MEETING OF CABINET MEMBER – JOBS, ECONOMY AND  
TRANSPORT**

**1 October 2013**

Report of the Acting Strategic Director – Environmental Services

**WILMOT ROAD, CHURCH GRESLEY – PROPOSED UPGRADE  
OF AN EXISTING ZEBRA CROSSING TO A PUFFIN  
CROSSING/PLACEMENT OF NEW PUFFIN CROSSING**

(1) **Purpose of the Report** To bring to the attention of the Cabinet Member the results of a public consultation, concerning the proposed placement of Puffin crossings on Wilmot Road, Church Gresley.

(2) **Information and Analysis** Funding has been secured for the upgrade of a Zebra crossing on Wilmot Road, Church Gresley to a Puffin crossing. (Funded from Section 106 Agreement money.) This is to improve access/safety for pedestrians walking towards Swadlincote town centre to the north.

Additional “top up” funding was secured from the Local Transport Plan (LTP) Capital Programme 2013/14, which would also allow the additional, new, Puffin crossing to be installed further south along Wilmot Road. These proposals followed concerns expressed by the local community, and the local County and District Councillors that there was a need to provide a Puffin crossing to meet the demand for the pedestrian desire line to the south (i.e a pedestrian desire line leading to St. Georges C of E Primary School, other community facilities at Church Gresley and more locally to facilitate access to the Scout Hut, Play School, Pre-school, Salvation Army Hall, and the former Memorial Club.)

Statutory consultation took place on both the above proposed crossing points in February 2013. This resulted in no objections.

Further, consultation with local residents and the local community took place in February 2013 regarding both Puffin crossing points. The Consultation plans for the following are appended to this report:

## **Public**

- (1) Wilmot Road near New Street - Conversion of Zebra Crossing to a Puffin type crossing. [Drawing Numbers TA 308/1/SO49/3 and SLD12.T1030.1A ]
- (2) Wilmot Road near Park Road – New Puffin Crossing [Drawing Numbers TA308/1/SO50/3 and SLD13.T1090.1].

Regarding (1), the conversion of the existing Zebra crossing, the consultation drawings and consultation questionnaire were delivered to 28 local properties on Wilmot Road and the adjacent side road junctions.

In response to this consultation issue, 14 consultation questionnaires were returned. Twelve properties supported the proposal and 2 properties raised objections (i.e. Of the number of consultation questionnaires issued, 92% supported conversion of the Zebra crossing to a Puffin crossing or made no reply, 8% made an objection.)

Regarding (2), the placement of an additional new Puffin crossing near Park Road, the consultation drawings and consultation questionnaire were delivered to 19 local properties on Wilmot Road and adjacent side access road junctions.

In response to this consultation issue, 4 consultation questionnaires were returned. Three properties supported the proposal and 1 property (a local business) raised an objection (i.e. Of the number of consultation questionnaires issued, 94% supported installation of a new puffin crossing or made no reply, 6% made an objection.)

### **Officer Comment**

Further details of the objections are provided as follows:-

- (1) Wilmot Road near New Street (Zebra Crossing Conversion) [Two objections.]

One objector raised concern that “the proposed lamp post and pillar will be only approximately 20 metres from our bedroom window and would significantly affect us..”

Note that following consultation, the proposed location of the lighting column has been moved as part of the design process, to a point slightly further away. It is considered that a lighting column, approximately 20 metres away from a property frontage, would cause minimal detriment to the property.

It is suggested that this objection be over-ruled in light of the note described above.

The second objector stated that it was “A total waste of public money”.

## Public

Note that the proposal is to fund this upgrade of the Zebra crossing to a Puffin crossing, and hence improve the visibility of the crossing on approach), out of Housing Developer, Section 106 Agreement money.

It is suggested that this objection be over-ruled in light of the note described above.

### 2) Wilmot Road near Park Road. (New Puffin Crossing) [One objection.]

The only objection was received from a local business, which commented "Not a good idea to restrict parking in this area "... In my opinion, a crossing is not needed there at all".

Note that following the consultation, the Officer's recommendation is to reduce the length of the zig zag markings leaving the crossing. This would minimise the length of restrictions and free up more length available for parking.

It is suggested that this objection should be over-ruled in light of the note above, and in light of the strong demand for a crossing here expressed to local Councillors by local people. This, also bearing in mind, only one person (6% of those consulted locally) objected to this proposed new crossing point.

### Local Member Comment

Councillor Southerd supports the conversion of the Zebra crossing to a Puffin crossing, and also supports the installation of a new Puffin crossing near Park Road.

In preparing this report the relevance of the following factors has been considered: legal, prevention of crime and disorder, equality and diversity, human resources, environmental, health, property and transport considerations.

(3) **Financial Considerations** The sum of £42,762 is secured through a Section 106 Agreement. Further additional "top up" funding of £12,000 is secured through the LTP Capital Programme 2013/14. [Scheme Number 030102].

The costs of the Puffin crossing traffic signals installation works (both the Zebra crossing upgrade and the additional new Puffin crossing) are being met by this combined budget which totals £54,762.

Both the Zebra crossing upgrade and the new Puffin crossing scheme, are fully designed. The as designed scheme cost estimates based on schedule of rates, are £24,500, plus £26,835, (i.e. £51,335 in total).

(4) **Key Decision** No.

## **Public**

(5) **Call-In** Is it required that call-in be waived in respect of the decisions proposed in the report? No.

(6) **Background Papers** Correspondence held on file (Traffic Signals Team) in the Environmental Services Department. Officer contact details – Dave Connell, extension 38592.

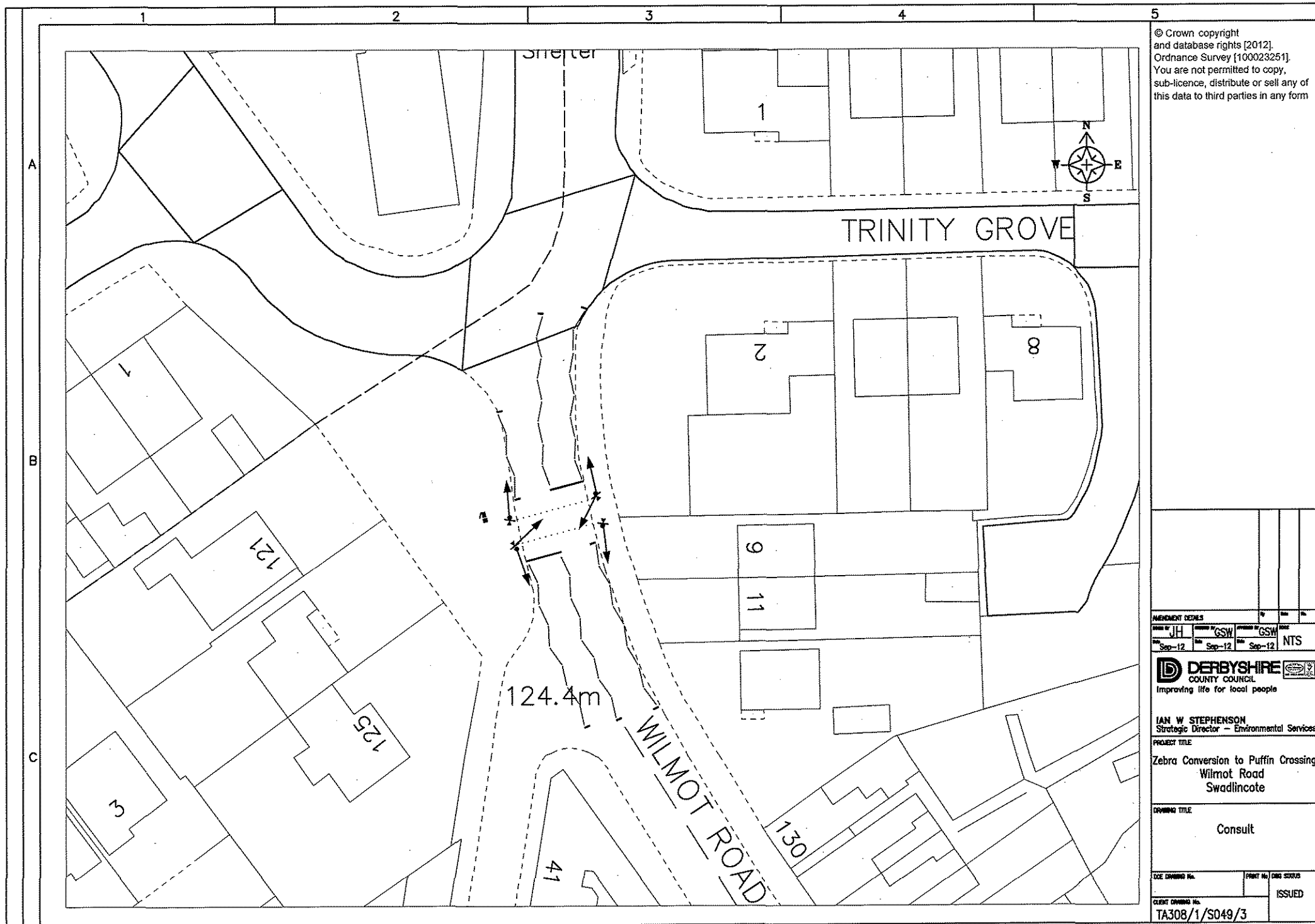
(7) **OFFICER'S RECOMMENDATIONS** That:

7.1 The Authority proceeds with the conversion of the Zebra crossing to a Puffin crossing on Wilmot Road near New Street, Church Gresley.

7.2 The Authority proceeds with the introduction of a new Puffin crossing on Wilmot Road near Park Road, Church Gresley.

6.2 The Local Member and objectors be informed accordingly.

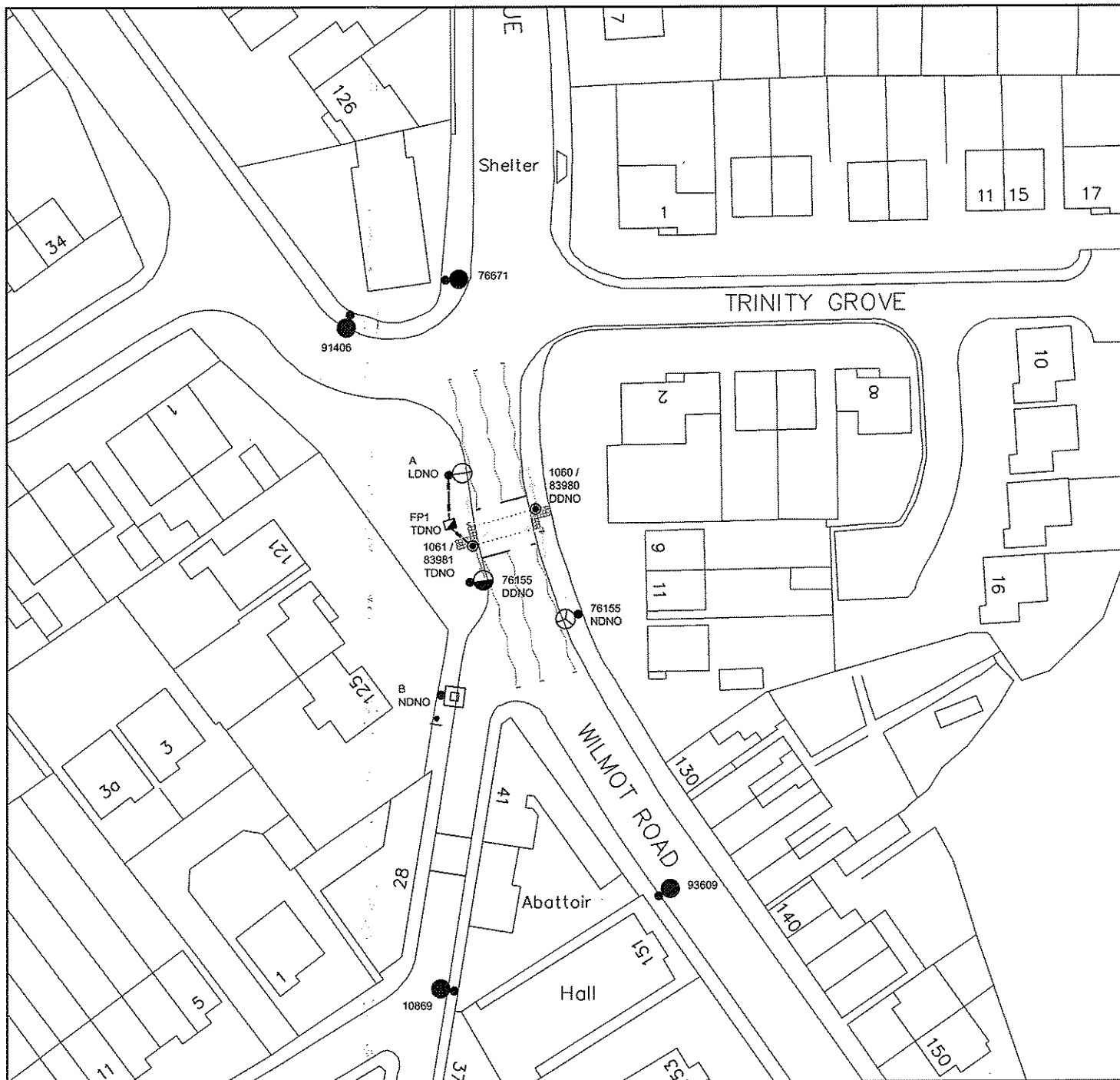
**Mike Ashworth**  
**Acting Strategic Director – Environmental Services**



© Crown copyright  
and database rights [2012].  
Ordnance Survey [100023251].  
You are not permitted to copy,  
sub-licence, distribute or sell any of  
this data to third parties in any form

PARAPET DETAIL			
DATE	BY	DATE	BY
12 Sep-12	JH	12 Sep-12	GSW
12 Sep-12		12 Sep-12	
12 Sep-12		12 Sep-12	
NTS			
<b>DERBYSHIRE</b> COUNTY COUNCIL Improving life for local people			
<b>IAN W STEPHENSON</b> Strategic Director - Environmental Services			
PROJECT TITLE			
Zebra Conversion to Puffin Crossing Wilmot Road Swadlincote			
DRAWING TITLE			
Consult			
DATE DRAWING No.		PRINT No. DWS SCHEM	
CLIENT DRAWING No.		ISSUED	
TA308/1/S049/3			

File Location: K:\Environment-and-Transport\Traffic-Management\Signals\Schemes\S049 Wilmot Rd, Swad\DWG.dwg  
File Created: Mon 05-Jul-2010 - 02:48PM  
Last Saved: Fri 06-Jan-2012 - 11:23AM



#### STREET LIGHTING LEGEND

- EXISTING COLUMN TO REMAIN.
- ◼ EXISTING NON-ILLUMINATED SIGN TO REMAIN.
- EXISTING COLUMN TO BE RELOCATED, AS SHOWN.
- ⊙ EXISTING COMBINED LAMP / BEACON POLE TO BE REMOVED.
- ◻ PROPOSED 150mm MINIATURE FEEDER PILLAR FOR THE USE OF TRAFFIC SIGNALS (SUPPLIED AND INSTALLED BY STREET LIGHTING SERVICES). EXACT POSITION TO BE DETERMINED BY TRAFFIC SIGNAL DESIGN SECTION.
- ◻ PROPOSED 8M TUBULAR STEEL COLUMN WITH POST TOP SPIGOT AND 6 LED (29W) PHOSCO P567A LANTERN WITH STANDARD OPTICS.
- ◻ PROPOSED 8M TUBULAR STEEL COLUMN WITH POST TOP SPIGOT AND 100W SON-T PIA PLUS ARC (SR/B) LANTERN.
- PROPOSED NEW LOCATION OF COLUMN 76155.
- PROPOSED ROUTE OF DISTRIBUTION NETWORK OPERATOR SERVICE CABLE.

- NDNO DISTRIBUTION NETWORK OPERATOR (WESTERN POWER DISTRIBUTION) TO SUPPLY NEW SERVICE.
- LDNO DISTRIBUTION NETWORK OPERATOR (WESTERN POWER DISTRIBUTION) TO SUPPLY LOOP SERVICE.
- TDNO DISTRIBUTION NETWORK OPERATOR (WESTERN POWER DISTRIBUTION) TO SUPPLY SERVICE TRANSFER.
- DDNO DISTRIBUTION NETWORK OPERATOR (WESTERN POWER DISTRIBUTION) TO SUPPLY SERVICE DISCONNECTION.

#### STREET LIGHTING NOTES

TESTING IN ACCORDANCE WITH BS 7671 SHALL BE CONDUCTED AND RECORDED TO THE SATISFACTION OF THE LIGHTING ENGINEER.

ALL EQUIPMENT TO BE SUPPLIED AND INSTALLED IN ACCORDANCE WITH HIGHWAY STANDARD DETAILS.

COLUMN LOCATION ALTERED / COLUMN 76155 TO BE REUSED

AMENDMENT DETAILS

DRAWN	CHECKED	APPROVED
MB	RB	RB
Date	Date	Date
27-02-2012	27-02-2012	27-02-2012



**DERBYSHIRE**  
County Council  
Improving life for local people

IAN STEPHENSON  
Strategic Director – Environmental Services

### STREET LIGHTING DESIGN

© Crown copyright and database rights (2011).  
Ordnance Survey (100023251).

You are not permitted to copy, sub-license, distribute or sell any of this data to third parties in any form.



ISO 9001:2000

PROJECT TITLE  
PROPOSED PUFFIN CROSSING  
WILMOT ROAD  
SWADLINCOTE

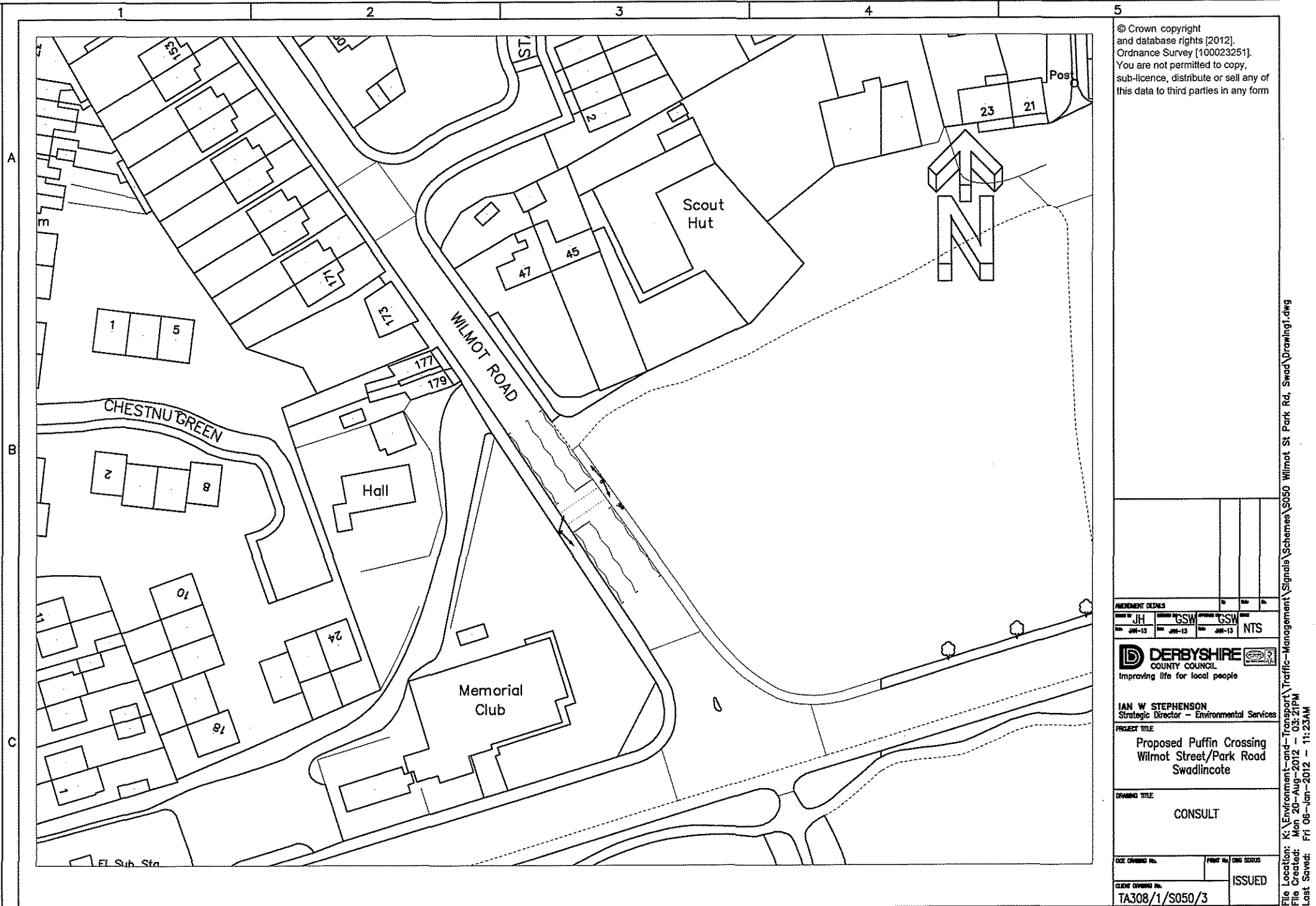
DRAWING TITLE  
PROPOSED  
STREET LIGHTING  
LAYOUT

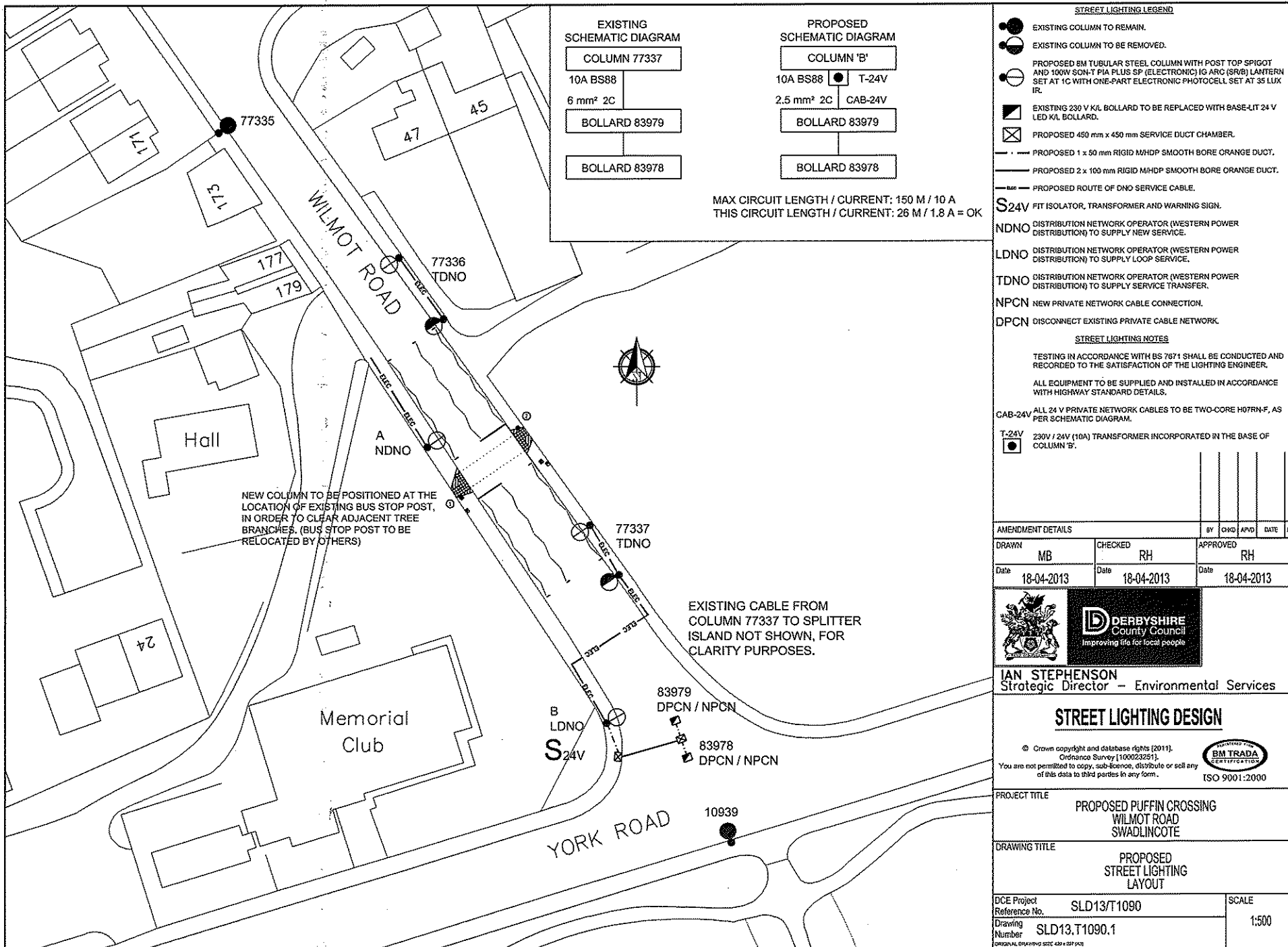
DCE Project  
Reference No. SLD12/T1030

Drawing  
Number SLD12.T1030.1A

SCALE  
1:500

File Location: K:\Environment-and-Transport\Street-Lighting Design\Traffic\2012\1030.1A.dwg  
 File Created: Mon 05-Jul-2010 - 02:48PM  
 Last Saved: Wed 10-Apr-2013 - 05:08AM





K:\Environment-and-Transport\Street-Lighting\Design\Traffic\2013 Designs\SLD12, T1090.1.dwg  
 File Location: Mon 20-Aug-2012 - 03:21PM  
 File Created: Thu 18-Apr-2013 - 03:53PM  
 Last Saved: