

**DERBYSHIRE COUNTY COUNCIL**  
**CABINET MEMBER MEETING FOR**  
**COUNCIL SERVICES**

**8 September 2014**

**Report of the Strategic Director Corporate Resources**

**Long Eaton Community House – Adult Education Centre**  
**- Access Improvements for Disabled People**

**1. Purpose of the Report**

Approval is sought to complete a scheme of access improvement works at Long Eaton Community House – Adult Education Centre using the Access Improvements Budget.

**2. Information and Analysis**

As a building from which the County Council provides a service to the public, Long Eaton Community House has been identified as in need of access improvements. The Adult Education Centre currently has an unreliable external platform lift arrangement as the only means of access to the building for a person unable to negotiate steps. It has now been established that a more accessible, and reliable, design solution is possible – by means of a new external ramped approach to the building.

**3. Council's Commitment**

“A Derbyshire that Cares”. These access improvements will help towards ensuring that disabled people in Derbyshire are able to access their local Council run services in the same way as everyone else.

**4. Financial Considerations**

A budgetary provision of £33,240 including approximately £3,022 fees is required. It is proposed that the scheme be funded from the 2012/13 Access Improvements Budget (formerly the Disability Discrimination Act budget). This budget was approved by Council on 1st February 2012 (Minute No 17/12 refers).

## **5. Legal, Equality and Diversity Considerations**

In line with the Public Sector Equality Duty, Derbyshire County Council must, in the exercise of its functions, have due regard to the need to advance equality by;

- Removing or minimising disadvantages suffered by people due to their protected characteristics.
- Taking steps to meet the needs of people from protected groups where these are different from the needs of other people.
- Encouraging people from protected groups to participate in public life.

## **6. Other Considerations**

In preparing this report the relevance of the following factors has been considered; prevention of crime and disorder, equality and diversity, human resources, environmental, health and transport considerations.

## **7. Key Decision** **NO**

## **8. Call-in**

Is it required that call-in be waived for any decision on this report? **NO**

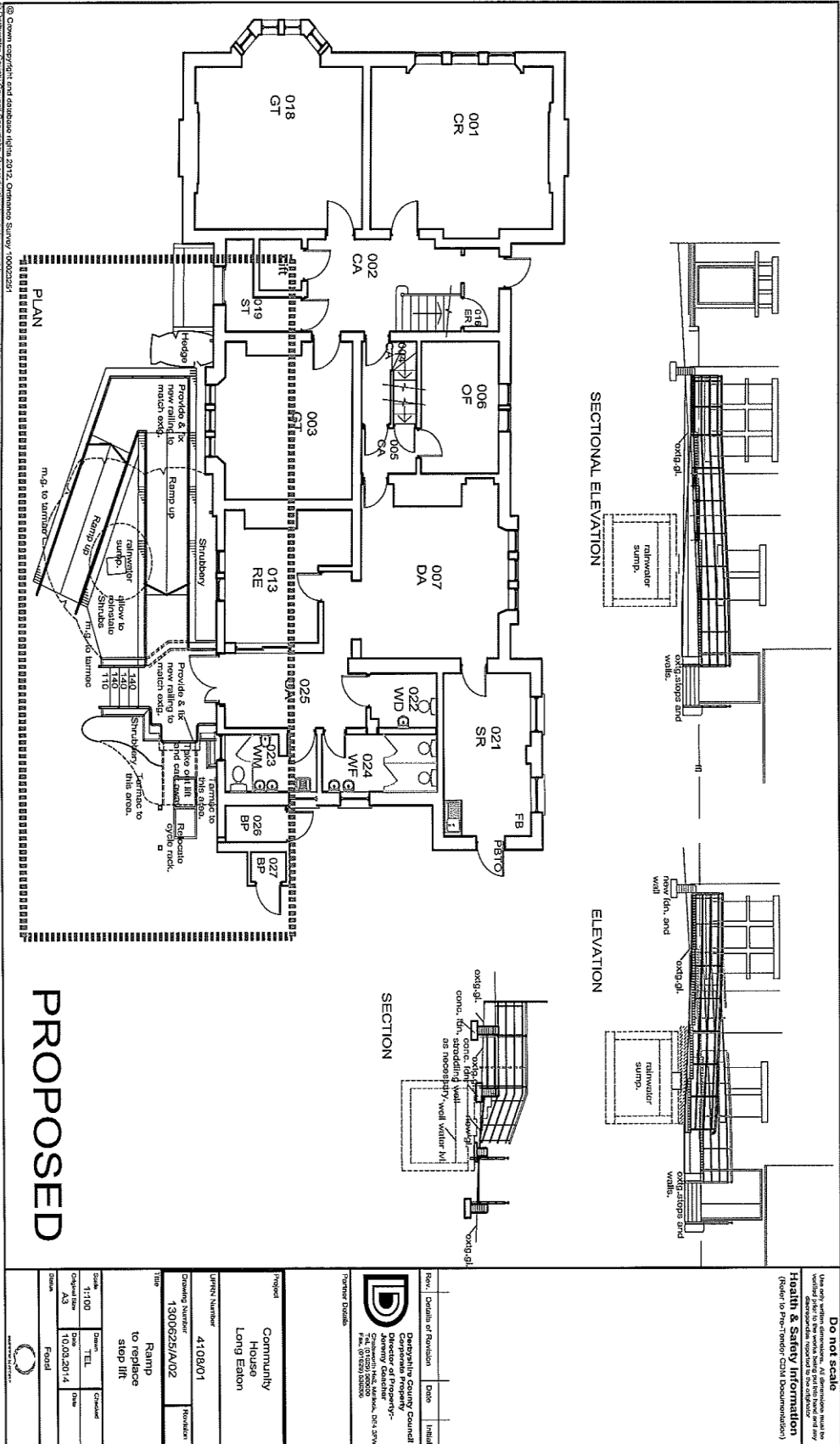
## **9. Background Papers**

Files held by the Director of Property.

## **10. OFFICER RECOMMENDATION**

That approval be given to completing a scheme of access improvement works at Long Eaton Community House – Adult Education Centre using funding from the Access Improvements Budget.

**JUDITH GREENHALGH**  
Strategic Director Corporate Resources



Do not scale

Use only within drawings. All dimensions must be taken from the drawings. Any dimensions shown on the drawings are approximate and should not be used for construction. Refer to the drawings for details.

**Health & Safety Information**  
(Refer to PHS-10000-0000)

Project: House  
Long Ecton

Project Number: 4108/01

Drawing Number: 13006254/A/01

Title: Ramp to replace stop lift

Scale: 1:100  
Original Date: 10.03.2014  
Date: 10.03.2014  
Author: Pencil

Project Details

Project: House  
Long Ecton

Project Number: 4108/01

Drawing Number: 13006254/A/01

Title: Ramp to replace stop lift

Scale: 1:100  
Original Date: 10.03.2014  
Date: 10.03.2014  
Author: Pencil

Project Details

Project: House  
Long Ecton

Project Number: 4108/01

Drawing Number: 13006254/A/01

Title: Ramp to replace stop lift

Scale: 1:100  
Original Date: 10.03.2014  
Date: 10.03.2014  
Author: Pencil