

# Could you benefit from better, faster broadband?

More than 46,000 Derbyshire homes and businesses have signed up to receive better, faster broadband thanks to Digital Derbyshire.

## Could you be next?

Digital Derbyshire – a partnership between Derbyshire County Council, UK Government and Openreach – has made superfast broadband\* available to more than 97,000 premises and an improved, faster broadband connection available to a further 5,000 properties which are unable to get superfast.

Find out how you could benefit at:  
[digitalderbyshire.org.uk](http://digitalderbyshire.org.uk)

\*Superfast broadband is defined by UK Government as download speeds in excess of 24Mbps

# Make a difference to your community

Apply today for an 'Action Grant' for your group, club or charity.

We've got £1.5m to give away in Derbyshire to support:

- **Youth Activities:** anything from setting up a youth club to supporting mental health initiatives
- **Community Activities:** setting up new groups, holding local events or starting community projects
- **Physical Activity and Sport:** initiatives to encourage people of all ages to be more active
- **Community Safety:** for projects aimed at reducing crime, scams awareness, tackling anti-social behaviour and keeping residents safe.

Find out how to apply and see some success stories at: [derbyshire.gov.uk/action](http://derbyshire.gov.uk/action)



# Your Council Tax 2019-20

[derbyshire.gov.uk/budget](http://derbyshire.gov.uk/budget)  
[budget@derbyshire.gov.uk](mailto:budget@derbyshire.gov.uk)

improving life • partnerships • proud of Derbyshire  
quality services • enterprising • effective  
value for money • efficient



# Spending your money where it's needed most



Looking after **3,500** miles of **roads** and **pavements**

Fixing **67,000** potholes

**Gritting 1,550** miles of roads

Cut-price **bus fares** for **187,000** pensioners and **64,000** teenagers

Disposing of **250,000** tonnes of **rubbish** and recycling

Looking after more than **80** countryside sites

Running **nine recycling** centres across the county open **362** days a year



Supporting **45** **libraries** and **two** mobile libraries

Promoting Derbyshire to **tourists** – worth **£2.15 billion** to the local economy

Helping people find a reliable **trader** through our **1,000** Trusted Traders

Registering **2,800** births

Welcoming more than **32,700** visitors to the Buxton Museum and Art Gallery

\*Includes council tax, direct Government funding and use of reserves.  
\*\*H&C – Health and communities inc trading standards. \*\*\*pp – per person.

This is a summary. For more information [derbyshire.gov.uk/budget](http://derbyshire.gov.uk/budget)



Helping **13,500** older and disabled people live **independently** at home

Supporting **20,000** carers to look after family and friends

**£30m** to provide new, high quality, affordable **residential care**

Running **23** residential homes and community **care** centres and eight extra care housing schemes

One-to-one **support** for more than **4,800** carers and respite care to around **800**

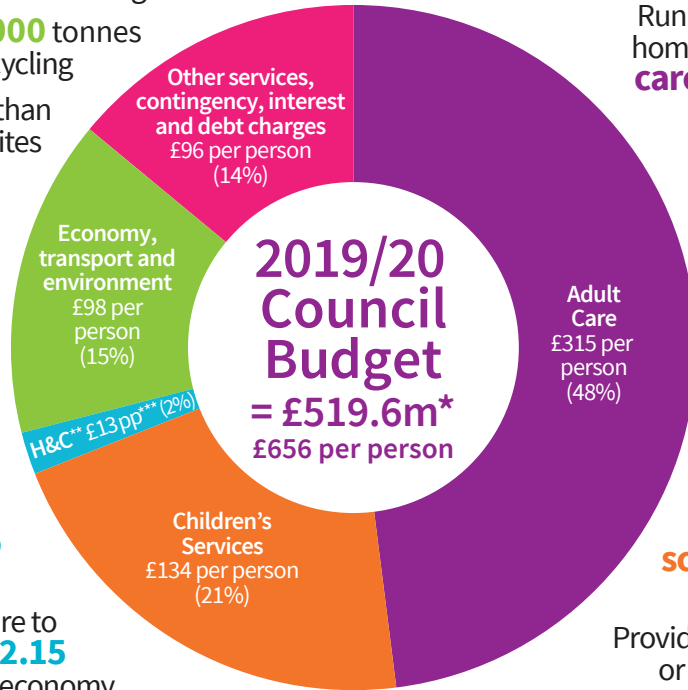


Supporting **416** **schools** to offer the best education

Providing **foster** homes or residential care for **770** children

Supporting **8,000** **disabled** children and their families

Running **21** children's centres and helping **30,000** under-fives get the best **start in life**



# What we'll be spending on your services

## REVENUE EXPENDITURE AND INCOME

BUDGET 2018-19			BUDGET 2019-20			
GROSS (£m)	INCOME (£m)	NET (£m)	SERVICES	GROSS (£m)	INCOME (£m)	NET (£m)
294.9	-58.7	236.2	Adult Care	309.3	-59.7	249.6
653.8	-555.1	98.7	Children's Services	667.5	-561.4	106.1
46.0	-2.4	43.6	Refuse Disposal	47.0	-2.8	44.2
22.2	-5.0	17.2	Highways and Countryside	21.7	-6.2	15.5
22.8	-7.2	15.6	Public Transport	22.2	-7.3	14.9
3.1	-1.3	1.8	Planning	3.8	-0.8	3.0
40.5	-40.5	0.0	Public Health	39.5	-39.5	0.0
9.4	-1.4	8.0	Health and Communities	9.8	-1.4	8.4
1.4	-0.1	1.3	Trading Standards	1.4	-0.1	1.3
11.3	0.0	11.3	Contingency	5.1	0.0	5.1
54.1	-7.2	46.9	Other Services	55.4	-7.3	48.1
<b>1159.5</b>	<b>-678.9</b>	<b>480.6</b>	<b>TOTAL</b>	<b>1182.7</b>	<b>-686.5</b>	<b>496.2</b>

	27.3	Plus debt charges	29.3
	-5.0	Less interest receipts	-5.9
	0.3	Internal financing	0.0
	<b>503.2</b>	<b>NET BUDGET REQUIREMENT</b>	<b>519.6</b>
	0.0	Less Revenue Support Grant	-13.5
	-94.2	Less Business Rates	-19.2
	-43.0	Less Top Up Grant	-93.4
	-40.4	Less General Grants	-54.6
	-11.5	Less Use of Reserves	-9.5
	<b>314.1</b>	<b>COUNCIL TAX</b>	<b>329.4</b>

## REASONS FOR CHANGE IN GROSS EXPENDITURE/BUDGET REQUIREMENT AND EFFECT ON COUNCIL TAX (£m)

Pay and price increases due to inflation and factors outside the council's control	4.1
Service pressures	36.8
Budget savings	-11.7
Change in services funded from grants and other income	-6.0
<b>CHANGE IN GROSS EXPENDITURE</b>	<b>23.2</b>
Increase in service income, such as increased charges for services	-7.5
Increase in internal financing	-0.3
Increase in debt charges	1.9
Increase in interest on balances	-1.0
<b>CHANGE IN BUDGET REQUIREMENT</b>	<b>16.3</b>
Less increase in Revenue Support Grant	-13.5
Add decrease in Business Rates	75.0
Less increase in Top Up Grant	-50.3
Less increase in General Grants	-14.2
Add decrease in Use of Reserves	2.0
<b>INCREASE IN COUNCIL TAX</b>	<b>15.3</b>



More details at [derbyshire.gov.uk/budget](http://derbyshire.gov.uk/budget)