

DERBYSHIRE CHILDREN AND YOUNG PEOPLE'S TRUST

**The Derbyshire  
Children and  
Young People's  
Plan  
2009 -2012**

# The Derbyshire Children and Young People's Plan 2009 - 2012

## CONTENTS

Foreword	3
1. Introduction	5
2. The vision	6
3. What are our priorities?	9
4. Early intervention and prevention	17
5. Thematic priorities	21
Be Healthy	22
Stay Safe	40
Enjoy and Achieve	52
Make a Positive Contribution	66
Achieve Economic Well-being	76
Disabled children	83
6. Derbyshire Children and Young People's Trust	87
Appendix 1 - Children's Services planning structure	
Appendix 2 - Risk register	

# Foreword

A message from Tracy Critchlow  
Chair of Derbyshire Children and Young People's Trust  
Cabinet Member for Young People at Derbyshire County Council

## **Picture of Councilor Critchlow to be added**

Welcome to Derbyshire's Second Children and Young People's Plan. It is **the** main plan to provide direction for everyone who works to improve outcomes for children in Derbyshire.

This plan is published by the Derbyshire Children and Young People's Trust, the body that draws together all the agencies that work with children and young people, including the Voluntary and Community Sector.

The first Children and Young People's Plan ran from 2006 – 2009 and produced many improvements in the quality of children and young people's lives. The health, welfare and achievements of many children have significantly improved in recent years. Independent evaluation and inspection reports show that partnerships between different agencies and organisations are resulting in more efficient services that really do help children and families.

However there is no room for complacency. Too many children in Derbyshire meet inequalities as they grow up and in this new plan we seek to reduce those inequalities.

Some inequalities are as a result of where children live. This Children and Young People's Plan is part of the Derbyshire wide Sustainable Communities Strategy which seeks to make all Derbyshire communities safe, strong and prosperous places. The current economic situation increases our determination to tackle this.

In this plan you will find many kinds of services being developed, some of which are beneficial to all children and some to help targeted groups such as children in care and disabled children. The emphasis throughout is to provide services at an early stage to prevent a child's difficulties developing into bigger problems later in childhood.

The final, and most important, theme running throughout the plan is the determination to keep children safe from harm. This is the responsibility of everyone who works with children in Derbyshire and I would like to thank all the staff, volunteers, parents and carers and members of public who help with this vital task.

A handwritten signature in black ink, reading "Tracy Critchlow". The signature is written in a cursive style with a large initial 'T' and 'C'.

Tracy Critchlow

# 1. Introduction

The first Children and Young People's Plan for Derbyshire covered the period 2006-2009. Although much has been achieved, there is plenty still to be done. We have carried out an extensive review of the Plan which has identified what we have achieved, what still needs to be done and what we now need to do. Some of the priorities are new, while others remain from the previous plan.

This purpose of this plan is to give a clear sense of direction for everyone who is working to improve outcomes for children and young people in Derbyshire. The plan sets out both our long term aspirations for the future and carefully planned and costed actions that we will undertake.

The government set out its aspirations for reform of Children's Services in Every Child Matters: Change for Children (2004) and The Children's Plan: Building Brighter Futures (2007) and the associated legislation and guidance. This plan shows how the Children and Young People's Trust will deliver these reforms and bring about better outcomes for children in Derbyshire.

Our overarching priority, agreed by partners across all publicly funded services in Derbyshire and set out in the Sustainable Communities Strategy is to reduce inequalities. This Plan will focus on how inequalities will be reduced for Derbyshire children and young people. Although not key priorities, the provision of universal services in education, social care and health are also covered in this plan and will continue to make a valuable contribution to overall outcomes and to addressing inequalities.

During 2009-10 partners have also agreed a particular focus upon:

- Reducing the harm from alcohol
- Responding to the economic downturn
- Safeguarding vulnerable people – we will particularly focus on ensuring child protection services keep children safe.

We have reviewed our priorities in light of progress and changes in children and young people's needs. Our revised key priorities for 2009 are outlined in subsequent chapters.

We have tried to keep the Children and Young People's Plan short and readable.

To build the plan, a much more detailed set of strategies and plans have been produced. Our planning structure, and details of how to obtain copies of these other plans, is set out in Appendix 1.

## 2. The Vision

The shared vision and aims for children and young people in Derbyshire is not new. In 2005, the vision was developed from an extensive consultation exercise with children and young people, parents and carers and professionals who work with children.

Our continued consultations confirm that this vision should continue as the basis for the Derbyshire Children and Young People's Plan 2009 – 2012.

### **Our Vision**

To ensure the best possible outcomes for children and young people.

### **Our Aims**

Our aim is to ensure that everyone working with children and young people and their families will do their best to enable them to be healthy, feel safe and be valued. We will encourage children and young people to get the most out of learning and leisure, appreciate their environment and make a positive contribution to their communities.

### **Our Beliefs**

Our vision is based on a set of beliefs which include:-

- All children and young people aged 0-19 and their families should benefit from improved services across Derbyshire.
- Children and young people, families and carers will be at the centre of all arrangements in Derbyshire to improve outcomes and their participation is essential.
- Services should be available and accessible, as far as possible in places such as children's centres, schools and health centres which most children and their families routinely visit.
- All children's agencies should provide the quickest possible response as well as the best possible service.

- Staff in all children's services should, as far as possible, work and be trained together and share a common understanding.
- Changes to services should only be made where children and young people's experience will improve.
- The voluntary and community sector has a key role to play in the development and delivery of services.
- Staff from all agencies should work together wherever this is likely to improve services.
- Services should be linked together so that there is only one common initial assessment.

### **Our Approach**

Many services in Derbyshire already work well. Therefore we will only change those things that need changing. We have already done many things that have improved things for children, young people and their families. We want to build on these to make further improvements to the lives of children and young people across the County.

We want to concentrate upon the five outcomes in Every Child Matters which children and young people said were the most important to them.

To deliver the vision and aims in line with our beliefs we need to:-

- Continue to build on the effective partnership working which already exists in Derbyshire so that effective local delivery becomes a reality.
- Further develop information sharing between all agencies and services.
- Continue to develop our consultation and feedback to all groups, particularly children, young people, their parents and carers.
- Further develop our preventative and early intervention strategies so that needs are more quickly and effectively met.

- Ensure that all those working with children and young people have the necessary skills, knowledge and expertise.
- Further develop integrated care planning and greater user involvement in their care plan.
- Develop local clusters where all key professionals can work side by side in a highly accessible community setting.
- Identify the needs of children and young people in Derbyshire more effectively.
- Develop the effective commissioning of services to meet these needs.
- Develop joint performance management of all services for children and young people.

### 3. What are our priorities?

The Derbyshire Children and Young People's Trust has developed its priorities based on a continuous rolling programme of consultation and involvement with children, young people, parents and carers. Users of services are involved in contributing to planning within each of the themed areas of planning set out in Appendix 1. Consultation undertaken includes:

- Youth councils at both county and district level
- An annual Every Child Matters survey of children in schools in addition to the national TellUs surveys
- Caring Voice – a youth council for children in care
- Nationally recognised consultation work with disabled children about the redesign of short-break services for disabled children

#### **The Joint Strategic Needs Analysis**

Ongoing analysis of the needs of children and young people in Derbyshire is collated within a Joint Strategic Needs Analysis (JSNA). The JSNA provides a whole population needs assessment, describing the future health and well-being needs of the population in the medium and long term. The JSNA is produced between adult social services, children's services and the public health section of the Primary Care Trust.

#### **Review of the previous children and young people's plan**

Since the production of the 2006 - 2009 Children and Young People's Plan, we have:-

- Continued to make our services user focused and accessible through the move to local delivery, extended use of the Call Centre and extended use of electronic communication.
- Successfully run publicity campaigns on topics as diverse as shaken babies, raising positive images of young people and promoting positive activities
- Further developed preventative services with initiatives such as promoting healthy eating, implementing targeted youth support and the managed moves protocol to reduce exclusions.

- Established a new joint commissioning structure between the County Council and the PCT.
- Appointed family resource workers based in schools who have increased the quality and quantity of preventative work.
- Placed a greater emphasis on preventative services with the appointment of district managers
- Created more opportunities for user involvement through the Children in Care Reference Group, School Councils, the Youth Council, Parent Partnership and a range of survey and participation events including a survey of around 800 secondary school pupils.
- Made good progress on partnership working. This continues to be a key area for development with strong representation of partners on the Children's Trust Board, Safeguarding Board and district partnership groups. Joint appointments with Health, the Police and the voluntary sector and the development of multi-disciplinary teams are examples of integrated working developments.

In all of the developments outlined we have sought to build on strengths and tackle areas of underperformance.

### **Analysis of service design and performance**

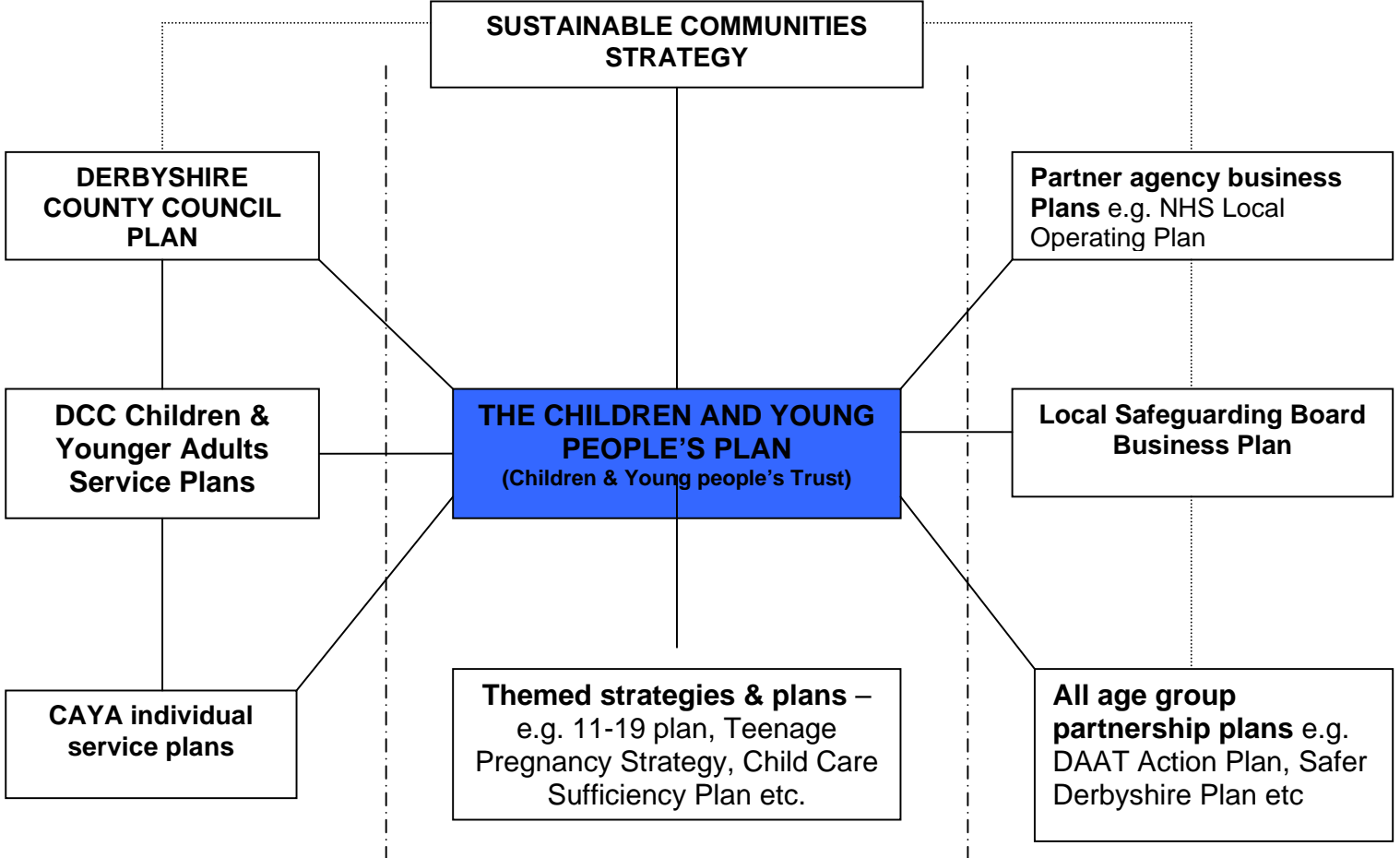
Much progress has been made in implementing the reforms set out in the previous Children and Young People's Plan. Service design is developing around children's centres and school clusters as our building blocks at the local level.

A district structure for the delivery of services is now embedded. Seven districts each have a district manager overseeing safeguarding and specialist services, 0-11 services and 11-19 services. Each district has a multi-agency District Partnership Group and Safeguarding Partnership Group to oversee the delivery of effective services.

We aim to provide better access to services, particularly those geared towards prevention, working in partnership and with a strong focus on quality and performance management. Structures are now in place at both district and county level to ensure the effective engagement of schools, the VCI sector, District Councils and early years providers.

In change process terms, we are evolutionary rather than revolutionary. Change is made where improvement is needed with a focus on service development rather than structural change, except where the latter was instrumental in moving towards our strategic direction.

**Planning Overview**



Children and Young People's Plan 2009 - Structure

Overarching Theme

To reduce inequalities

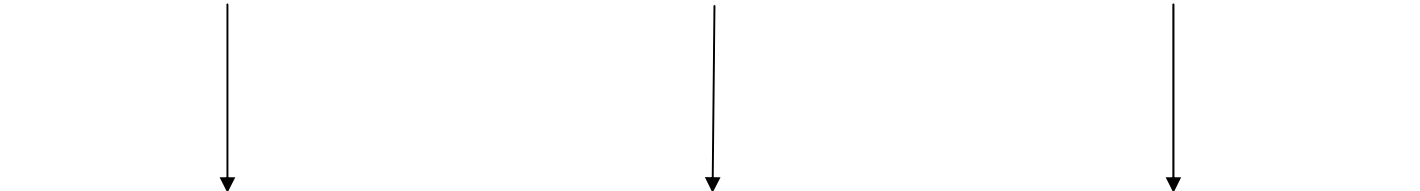


Cross cutting priorities

Reducing Alcohol Harm

Responding to the Economic Downturn

Safeguarding vulnerable people



LAA Targets

Increasing breastfeeding

Reducing obesity

Reducing teenage pregnancy

Reducing nos of young people Not in Education, Employment or Training

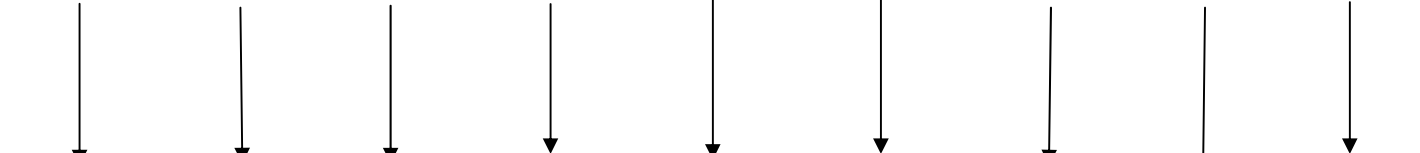
Reducing bullying

Improving services for disabled children

Increasing numbers of adults qualified to level 2

Increasing participation in positive activities

Improving educational attainment and attendance for all



Develop core business

Workforce development  
Integrated frontline working  
Strengthen Children's Trust arrangements  
Integrated planning and commissioning

Be Healthy

Stay Safe

Enjoy and Achieve

Making a positive contribution

Achieving economic well-

## **Overarching Themes**

Publicly funded services in Derbyshire are overseen by The Derbyshire Partnership Forum. The Forum's plans for communities in Derbyshire are set out in the Sustainable Communities Strategy. The Children and Young People's Plan is linked to this strategy and shares its overarching priority: **to tackle inequalities.**

### **Cross cutting key areas of focus**

The Sustainable Communities Strategy has also identified three areas for priority action from April 2009 onwards. These too are shared priorities with the Children and Young People's Plan as they are issues that impact significantly on children, young people and their families.

The priorities are:

#### **1. Alcohol harm**

This links to many problems for children and young people including the health effects of alcohol on young people, road traffic accidents, teenage pregnancy, domestic violence and youth crime.

#### **2. Responding to the Economic downturn**

Our needs analysis of vulnerable children has established child poverty and family break-up are primary factors of disadvantage for vulnerable children that are likely to worsen in a recession. We will take steps to mitigate the effects.

#### **3. Safeguarding vulnerable people**

The protection of children, especially those vulnerable to child abuse is central to the work undertaken by the Children's Trust partners and remains a key focus of everything we do.

## **Local Area Agreement Targets**

Derbyshire Partnership has agreed a number of priority targets with central government based on the needs of Derbyshire residents. Improvements in the outcomes of these priority targets will directly affect the well-being and safety of children and young people.

The Derbyshire Children and Young People's Trust Board is the responsible body for the following indicators:

<b>National Indicator</b>	<b>Local Area Agreement Indicator</b>
NI 110	Increase participation of young people in positive activities
NI 56	Reduce obesity among primary school age children in year 6
NI 117	Reduce the no. of 16-18 year olds who are not in education, training or employment
NI 54	Improve services for disabled children
NI 53	Increase the prevalence of breast-feeding at 6-8 weeks from birth
NI 69	Reduce the number of children who have experienced bullying
NI 163	Increase the no. of working age people qualified to level 2 or higher
NI 112	Reduce the under 18 conception rate

### **16 mandatory education targets**

Narrow the gap in educational achievement between children from low income and disadvantaged backgrounds and their peers:

NI092	Narrowing the gap between the lowest achieving 20% in the Early Years Foundation Stage Profile and the rest PSA 11
NI093	Progression by 2 levels in English between Key Stage 1 and Key Stage 2 PSA 11
NI094	Progression by 2 levels in Maths between Key Stage 1 and Key Stage 2 PSA 11

- NI095 Progression by 2 levels in English between Key Stage 2 and Key Stage 3 PSA 11
- NI096 Progression by 2 levels in Maths between Key Stage 2 and Key Stage 3 PSA 11
- NI097 Progression by 2 levels in English between Key Stage 3 and Key Stage 4 PSA 11
- NI098 Progression by 2 levels in Maths between Key Stage 3 and Key Stage 4 PSA 11
- NI099 Children in care reaching level 4 in English at Key Stage 2 PSA 11
- NI100 Children in care reaching level 4 in Maths at Key Stage 2 PSA 11

Close the gap in educational achievement for children from disadvantaged backgrounds:

- NI083 Achievement at level 5 or above in Science at Key Stage 3 DCSF DSO
- NI087 Secondary school persistent absence rate DCSF DSO

Raise the educational achievement of all children and young people:

- NI072 Achievement of at least 78 points across the Early Years Foundation Stage with at least 6 in each of the scales in Personal Social and Emotional Development and Communication, Language and Literacy PSA 10
- NI073 Achievement at level 4 or above in both English and Maths at Key Stage 2 (Threshold) PSA 10
- NI074 Achievement at level 5 or above in both English and Maths at Key Stage 3 (Threshold) PSA 10
- NI075 Achievement of 5 or more A\*-C grades at GCSE or equivalent including English and Maths (Threshold) PSA 10

In addition, the work of the Children and Young People's Trust contributes to improving outcomes in these priority target areas:

NI 20	Assault with injury crime rate
NI 32	Repeat incidents of domestic violence
NI 49	Serious acquisitive crime rate
NI 39	Number of primary fires and related facilities and non-fatal casualties
NI 27	Alcohol-harm related hospital admission rates
NI 47	People killed or seriously injured in road traffic accidents
NI 120	All age all cause mortality rate
NI 175	Access to services and facilities by public transport, walking and cycling
NI 7	Environment for a thriving third sector
NI 9	Use of public libraries
NI 1	Percentage of people who believe people from different backgrounds get on well together
Local indicator	First time entrants to the Youth Justice system aged 10-17 at court entry level
Local indicator	All drug users in effective treatment

### **Core business**

Whilst the children and young people plan concentrates on what we will do to improve services, many services already help children and their families achieve good outcomes. We will continue to support the parts of services that already produce excellent outcomes, whilst changing those that can be improved.

## 4. Early Intervention and Prevention

### The County of Derbyshire

Derbyshire is a large, mainly rural, county of moors, hills, small villages and busy towns. Levels of affluence and deprivation vary across the county from thriving tourist centres in areas of outstanding natural beauty to areas of decline such as those still suffering from the demise of the coal industry. Employment rates are in line with the national average. However average earnings are below the national average and unemployment is high in some areas especially in the north east of the county.

The overall population grew by 6.6% between 1991 and 2008. It is now around 764,000 of whom 23.2% are aged between 0-19 years old. It is projected to increase by a further 2.9% by 2012 although the number of 0-19 year olds is decreasing. The minority ethnic population is very small at 2.98%, of which the largest single group, 0.61%, is Indian. More recently small but growing numbers of people from Eastern Europe have begun to settle in the north east of the county.

There are 42 children's centres, 132 day nurseries, 154 pre-schools, 125 out of school clubs, 24 crèches, 32 holiday schemes and 707 childminders.

The County Council maintains 8 nursery schools, 63 infant schools, 52 junior schools, 235 primary schools, 47 secondary schools, 10 special schools and 8 support centres (pupil referral units). 18 schools have enhanced resource facilities for pupils with complex special educational needs.

The County is served by 3 post 16 Colleges and by Derby University which also offers post 16 provision. 28 secondary schools and 5 special schools have post 16 provision. Entry to Employment provision is offered by a range of providers including the County Council's Community Education service.

Adult and community learning is delivered through the County Council's adult community education service. It also provides a wide range of, family learning opportunities, in partnership with Read On, Write Away! a literacy based partnership project.

The Youth Service operates 7 Youth Resource Centres and 16 mobile units including a mobile climbing wall and skate and ride unit.

Primary care for the majority of the County is provided by Derbyshire County Primary Care Trust while primary healthcare services to the town of Glossop and surrounding area in the North of the County come from the Tameside and Glossop Health Authority.

Acute hospital services are largely provided at Chesterfield Royal Hospital and Derby City Hospital. Some acute hospital services for residents in the north of the county, particularly maternity services, are located at Stepping Hill Hospital, Stockport and at Tameside General Hospital, Ashton-under-Lyne. Derbyshire's geography also means that acute services for other small parts of the population and for children with highly complex needs are delivered in or from hospitals outside the County.

Mental health services are covered by the Royal Hospital for the north of the County and the Derbyshire Mental Health Trust for the south with mental health services for the Glossop area being covered by Pennine Care NHS Trust.

Social care services for children have 389 foster carers, 9 children's homes, 7 family support centres, 1 residential respite care home and 7 district-based locality teams.

There is one young offender institution in Derbyshire. Foston Hall provides for 16 young women, some of whom may come from Derbyshire.

## **Prevention and Early Intervention**

The challenge for the Children's Trust in Derbyshire is to ensure the continuing delivery of the high quality services which all our children and young people need while, at the same time, placing greater emphasis on preventative services. In addition, the provision of targeted specialist services to those in greatest need presents a real challenge for the Council and its partners.

The development is already underway, of services that will reduce the amount of reactive intervention and increase the number of children whose needs are met before their difficulties become complex. Our new Joint Commissioning arrangements have begun a programme of commissioning and de-commissioning services based on detailed needs

analysis, including those identified within the Joint Strategic Needs Analysis (JSNA). Our first priority in 2009 – 10 will be to re-commission Child and Adolescent Mental Health services (CAMHs).

The needs of children and young people in Derbyshire are at different levels.

**Level 1** covers universal services which are provided for all children such as good schools, effective health care and a range of additional services.

**Level 2** describes the needs of a smaller group of vulnerable children who need additional support either at school, in the home or in the local community.

**Level 3** is intended to cover the needs of children and young people who need additional support because they may have personal or physical difficulties or suffer from family crisis. These young people will need specialist support from people working in both the statutory and voluntary sectors.

**Level 4**, support and intervention at this level is for the smallest but most needy group of children and young people who need intensive help and support.

Our approach to prevention and early intervention is set out in our preventative strategy.

There are around 168,000 children and young people aged 0-19 in Derbyshire, of whom almost 45,000 are in need at some point in their childhood. Of these, 8,500 have a significant impairment.

This model is not static and as children and young people's needs change, they will move between the levels. It should also be recognised that children and young people's needs may be met through support at different levels at the same time.

A child or young person receiving a service at a particular level may also need a service at a lower level. All children and young people require universal services which meet their individual needs.

Recent work has identified three primary sources of disadvantage affecting large numbers of children within Derbyshire. They are family breakup, domestic abuse and poverty. In addition bereavement and bullying have been identified as being additional significant disadvantages for large numbers of children. The Children's Trust partners will be leading work to systematically tackle these issues in developing services and in casework with individual children.

Using the large amounts of electronic data held by agencies in Derbyshire, we are developing a Vulnerable Children's Matrix to analyse the needs of children. This tool will allow us to further identify the causes of difficulties for children, including detailed analysis of very small geographic areas and will inform our developing commissioning programme.

The Trust is continuing to develop services which are able to address the needs of children, young people and their families at the earliest point and, therefore, reducing the need for the intervention of specialist services. Such preventative services provide support for young people and their families before they reach crisis, with the aims of reducing the future probability of poor outcomes and of maximising their life chances.

# **5. THEMATIC PRIORITIES**

**Be Healthy**

**Stay Safe**

**Enjoy and Achieve**

**Making a Positive Contribution**

**Achieving Economic Well-being**

**Improving outcomes for disabled children**

# Be Healthy

## Joint Strategic Needs Analysis Summary

Derbyshire is a comparatively healthy place to grow up for many children. However health outcomes for both children and adults are uneven and children in disadvantaged areas experience significantly poorer health. There is a clearly established relationship in poorer communities regarding high rates of teenage pregnancy, childhood obesity, alcohol abuse by young people and low rates of breastfeeding.

Areas of multiple deprivation exist in all districts of Derbyshire but are concentrated in urban industrial areas in the east of the county where health outcomes for children are poorer. However, closer analysis shows there are small pockets of deprivation in otherwise affluent areas of Derbyshire and this also adversely affects health outcomes for children.

## Summary of key achievements and outcomes

During the lifetime of the previous Children and Young People's Plan 2006-09, there has been a strong drive to improve health of children and young people and encourage healthy lifestyles.

- Healthier lifestyles adopted by many children and young people assisted by the healthy schools scheme – 90% of schools are graded as outstanding or good for this aspect of Ofsted inspections
- Healthier school meals – uptake has remained steady
- Increased amount of both school P.E. and participation in sport and exercise out of school
- The proportion of illegal sales of age-restricted products, including alcohol have reduced
- The total number of young people in drugs treatment has increased

Improving the health of children and young people is a key priority for the Children's Trust and the posts of Deputy Director of Public Health and Assistant Director of Commissioning are jointly funded by the Local Authority and Derbyshire PCT to promote integrated working focused on improving health outcomes.

## **Principles and Priorities**

Our aim is to ensure all children and young people have good physical and mental health and link it with a healthy lifestyle. **The key principles are: -**

- Services, agencies and partners will work together to improve the health of all children and young people, including those who may find it hard to get a service, with services provided as close to children and young people's homes as possible, so that they can lead and enjoy healthy lifestyles.
- We want children and young people to know and understand about the things that are good for them and those that are dangerous to their health.
- Services will work together to prevent severe illness in children and young people and to provide access to the best services, locally for those with a serious illness or disability.
- We will work together to help children and young people feel good about themselves and provide services for those who have any form of emotional or mental health difficulty.

### **Our key priorities are: -**

- (1) Reducing obesity by promoting healthy eating and physical activity
- (2) Reducing the number of teenage pregnancies
- (3) Increasing the amount of breast feeding
- (4) Providing help to stop excess drinking

**Our secondary priorities are: -**

- (1) Improving support for children and young people suffering from emotional or mental health problems
- (2) Developing parenting skills programmes in order to improve emotional well-being and life chances
- (3) Maintaining high levels of vaccination and immunisation
- (4) Addressing health inequalities including infant mortality and low birth weight
- (5) Providing improved health advice and support to young people within schools and other local settings
- (6) Continuing to tackle problematic drug use

## **Be Healthy - Key Priority 1 - Reducing obesity by promoting healthy eating and physical activity.**

### **Planned Outcome**

Our initial aim is to halt the rise in the numbers of children who are obese.

### **Where are we now?**

- It is estimated that over 33,000 children are clinically obese in Derbyshire.
- Many more children are overweight
- Slight decreases in the numbers of children who are overweight have been achieved in 2008
- Figures for the academic year 2007/08 show a rise to 17.1% in the numbers of obese children in Derbyshire at the end of primary school
- Obesity rates for younger children in reception classes have fallen to 7.8%

A Framework for Action that brings together statutory, voluntary and private agencies to reduce unhealthy weight in children has been developed.

### **We will:**

- Improve prevention of obesity through consistent messages in all settings to promote the benefits of a healthy lifestyle through recognising the importance of healthy family meals, good nutrition, and an active lifestyle
- Promote the early identification, support and referral of those most at risk;
- Introduce services to enable families to reduce the risk factors and change lifestyle(Including medical and psychological pathways for children who are defined as morbidly obese)
- Use the National Campaign "Change for Life" to ensure that young people and their families receive a consistent message about healthy living
- Develop a local social marketing campaign that is specific to the uptake of the Healthy Start Vouchers and Vitamins, and Free School meals
- Increase access to sport and physical activity for young people to five hours per week
- Introduce the Henry programme, a lifestyle change programme for the parents of young children, delivered by health visitors and children's centre workers
- Develop a series of programmes within extended services in and around schools, including a Family Lifestyle Implementation Programme (FLIP) to support complex lifestyle change by the morbidly obese
- Achieve full accreditation of all schools in the healthy schools programme

**Further information:**

Derbyshire County PCT Local Operating Plan - Derbyshire Obesity Strategy and Action Plan

**LAA Priority Indicator**

Ref	Priority	Indicator	Baseline	2008/09	Future Targets		Lead Responsibility
				Planned	2009/10	2010/11	
NI056	Tackle Obesity	% of children in Year 6 with height and weight recorded who are obese	15.6	15.8	15.8	15.6	Derbyshire County PCT

**Other measures (from the National Indicator Set)**

NI052a	Reduce obesity	Take up of school lunches - primary schools	Baseline to be established				Ian Thomas
NI052b	Reduce obesity	Take up of school lunches - secondary schools	Baseline to be established				Ian Thomas
NI055	Reduce obesity	% of children in Reception Year with height and weight recorded who are obese	8.5	8.7	8.6	8.5	Bruce Laurence
NI055b	Reduce obesity	% of children in Reception Year with height and weight recorded (participation)	90	85	87	88	Bruce Laurence

NI056b	Reduce obesity	% of children in Year 6 with height and weight recorded (participation)	81.8	86	87	88	Bruce Laurence
NI057	Reduce obesity	Children and young people's participation in high-quality PE and sport	Baseline to be established				Donald Rae

## **Be Healthy - Key priority 2 - Reducing the number of teenage pregnancies**

### **Planned Outcome**

Targets for teenage conceptions for 2010 are:

- To reduce the under 18s conception rate by 50% (from a 1998 baseline) and
- To increase the participation rate of teenage parents into employment, education and or training by 60%

### **Where are we now?**

The under 18-conception rate rose slightly in 2007 (the last year for which figures are available) and the current trend is that the conception rate has been static since 2004.

The Derbyshire Teenage Pregnancy Board has developed a local action plan that has a targeted approach to the “hot spot” areas of Chesterfield, Bolsover and Erewash district/borough council areas.

All the second tier areas except Derbyshire Dales have at least one ward with a high number of teenage pregnancies. The broader social structural determinants of early pregnancy can only be addressed through effective partnership working.

### **We Will:**

- Focus resources on ‘hot spot’ areas.
- Promote good partnership development by all agencies, including schools
- Use data and information analysis to inform targeting of resources
- Tackle root causes of teenage pregnancy by ensuring that the teenage pregnancy partnership arrangements are linked with the development of integrated youth support services
- Reduce significant differences in young people who are Not in Education, Employment or Training (NEET) and learning between Districts / Learning Communities, with particular reference to young mothers.
- Further promote high quality
  - a. Sex and relationship education
  - b. Contraception services
  - c. Support for teenage parents

**Further information:**

Derbyshire County PCT Local Operating Plan  
Teenage Pregnancy strategy

**LAA Priority Indicator**

Ref	Priority	Indicator	Baseline	2008/09	Future Targets		Lead Responsibility
				Planned	2009/10	2010/11	
NI112	Reduce teenage conceptions	Under 18 conception rate	24% rate of reduction 2007	-33 to 27.9 per k	-41% to 24.3 per k	-50 to 20.8 per k	Derbyshire County PCT

**Be Healthy - Key priority 3**  
**Increase the amount of breast feeding**

**Planned Outcome**

To improve the health of children in Derbyshire by increasing levels of breast feeding, especially in areas of greater deprivation.

**Where are we now?**

- In Derbyshire the baseline for breast feeding initiation is 75% - currently achieving 73%
- The prevalence of breast feeding at 6/8 weeks is 36%. However the breast feeding rates in areas of higher deprivation are consistently lower (e.g. Bolsover - 29%, North East – excluding Dronfield - 29%).
- Within the existing approaches of providing training to enhance professional and clinical skills, there is little evidence of a significant increase in the breast feeding rates.
- Evidence suggests that the most effective way of achieving an increase in breast feeding is to develop stand alone paid peer support programmes to support mothers

**We Will**

- Commission a social enterprise to provide paid peer support to mothers in the ante-natal, hospital and post-natal stages for as long as the mother requires support with breast feeding. The service will use social marketing techniques to promote breastfeeding at a community level
- Introduce a 24/7 breastfeeding helpline
- Ensure 'Baby Friendly' standards are developed in all settings including libraries and children's centres

**Further information:**

Derbyshire County PCT Local Operating Plan  
Breast-feeding strategy  
Children's Centre strategy

### LAA Priority Indicator

Ref	Priority	Indicator	2008/09	Future Targets		Lead Responsibility
			Planned	2009/10	2010/11	
NI053	Reduce health inequalities	% of infants being breastfed at 6–8 weeks (breastfeeding prevalence)	45% (baseline year)	47%	49%	Derbyshire County PCT

### Other measures (from the National Indicator Set)

NI053b	Reduce health inequalities	% of children for whom breastfeeding status is recorded (breastfeeding coverage)	85 (baseline year)	90	95	Bruce Laurence
--------	----------------------------	--	--------------------	----	----	----------------

## **Be Healthy - Key priority 4 - Providing help to stop excess drinking.**

### **Planned Outcomes**

To reduce alcohol consumption by children and young people and to reduce excessive consumption by parents and carers.

### **Where are we now?**

- In line with national trends, consumption of alcohol by young people continues to be a significant problem
- Alcohol misuse is often a factor in anti-social behaviour, youth crime and teenage pregnancy. Alcohol misuse is a significant factor for carers whose children are abused or neglected
- Rates of admission to hospital due to alcohol harm in the North East of the county are amongst the highest in the East Midlands
- Analysis of children subject to child protection plans shows a high level of parental alcohol misuse

### **We will:**

- Ensure all schools, colleges and training providers have up to date substance and alcohol misuse policies and programmes
- Further develop treatment services for young people, including access to Tier 2 services
- Continue to tackle underage sales by spot checks, the promotion of proof of age identity checking and publicity campaigns
- Provide increased numbers of positive activities for young people. Some of these will be targeted on Friday evenings which consultation shows to be the key time for the provision of alternatives
- Appoint specialist social workers to work with families where the parent or carer has significant difficulties arising out of alcohol or drugs misuse

### **Further information:**

Derbyshire County PCT Local Operating Plan  
DAAT Strategy and action plan

**Be healthy – Secondary Priority 1 - Improving support for children and young people suffering from emotional or mental health problems.**

**Planned Outcomes:**

- An improvement in the mental health of all children and young people
- Multi-agency services provide early intervention, and also meet the needs of children and young people with established or complex problems
- All children, young people and their families have access to mental health care based upon the best available evidence and provided by staff with an appropriate range of skills and competencies

**Where are we now?**

- Access to services for 16 and 17 year olds and 24 hour cover for urgent mental health assessments are now available across Derbyshire.
- The commissioning of a full range of services both for children with a learning disability and for all children in local universal settings have still to be developed in full.

A new strategy is required to deliver comprehensive CAMHS across the county and meet the challenge of integrated services and care pathways including developing targeted mental health services. This will be jointly commissioned by the Children's Trust using the new commissioning arrangements that have been set up.

**We will:-**

- Re-commission CAMHS services as an integrated network of targeted services based around schools
- New services will be linked to the Targeted Youth Support delivery model
- Introduce an integrated training programme and make appropriate resources available to all staff working in universal services
- Incorporate proposals for children in care in the new service

**Further information:**

Derbyshire County PCT Local Operating Plan  
CAMHS Strategy and action plan  
Commissioning Strategy

**Other measures** (from the National Indicator Set)

Ref	Priority	Indicator	Baseline	2008/09	Future Targets		Lead Responsibility
				Planned	2009/10	2010/11	
NI050	Improve mental health	Emotional health of children	64.2	64.2	64.2	64.2	David Connor
NI051	Improve mental health	Effectiveness of child and adolescent mental health (CAMHS) services	13	14	14	14	Ian Johnson

**Be healthy – Secondary Priority 2 - Developing parenting skills programmes in order to improve the emotional well-being and life chances.**

**Planned Outcomes**

To improve the care given by parents and carers at all levels of need.

**Where are we now?**

- Parents and carers are the single most important people in helping children to grow into healthy, confident, well educated adults able to contribute and enjoy life. To this end, it is vital that **all** services support parents in their role
- Some parents will have additional support needs and require specialist support services
- We have already developed a range of local support services for parents including recent expansion of children's centres and family resource workers in schools
- Parents and carers tell us that they want even more support than is currently provided

**We will:**

- Make comprehensive, local information for parents about how to get support available via the internet, the call centre, schools and children's centres.
- Include appropriate parenting skills work in the contracts services that are being commissioned
- Ensure frontline workers have appropriate skills to support parents and carers by including this in the workforce reform programme
- Ensure universal availability of child care to all parents who require this for their children from birth to 14 years (19 years if disabled)
- Offer support and advice to parents about school problems via the Parent Partnership service
- Provide intensive intervention to those families who need it via specific parenting courses and groups and schemes such as the Family Intervention Project

**Further information:**

Derbyshire Parenting Strategy and action plan

## **Be healthy – Secondary Priority 3 – Maintaining high levels of vaccination and immunisation**

### **Planned Outcome**

To achieve World Health Organisation recommended immunisation uptake rates of at least 95% for primary courses and 90% for booster doses in order to achieve whole community protection (herd immunity)

### **Where are we now?**

Derbyshire has a very good track record of immunisation uptake rates compared with England and Wales. However not all programmes achieve World Health Organisation uptake rates and rates vary across different districts.

### **We Will:**

- Identify and integrate best practice from the different service delivery models
- Ensure new and existing immunisation programmes are successfully commissioned and delivered to meet Primary Care Trust targets.
- Increase inter-agency working, especially via Children's Centres to ensure equitable access to immunisation programmes for vulnerable groups of children and young people.
- Deliver selective childhood immunisation programmes that target children at particular risk of certain diseases such as hepatitis B, tuberculosis, influenza and pneumococcal
- Develop a programme to prevent cervical cancer in girls by introducing a childhood immunisation programme against human papillomavirus – HPV (to be introduced September 2010). This
- Complete catch-up campaigns that are running - Haemophilus influenzae type b (**Hib**) and measles, mumps, rubella (MMR)
- Develop a new service specification to integrate data from different child health systems

### **Further information:**

Derbyshire County PCT Local Operating Plan

## **Be healthy – Secondary Priority 4 - Addressing health inequalities including infant mortality and low birth weight.**

### **Planned Outcome**

To reduce both infant mortality rates and reduce the numbers of babies of low birth rate

### **Where are we now?**

- The number of deaths in infants under 12 months of age (infant mortality) is a good general indicator of the health of local children and the rest of the community.
- The infant mortality rate (infant deaths per 1,000 babies born) in Derbyshire (1.7) is slightly higher than England's rate.
- Chesterfield has the highest infant mortality rate in Derbyshire and there is a general correlation between levels of infant mortality and deprivation.
  
- Whilst Derbyshire's low birth weight figures are below the national average, this figure conceals wide variations in parts of the county.
- Low Birth Weight in Derbyshire is strongly correlated to deprivation.
- Numbers of babies of low birth weight (LBW) is also a good indicator of overall child health.
- There is a strong relationship with deprivation, smoking in pregnancy and poor maternal diet

### **We Will:**

- Reducing inequalities in the most deprived districts
- Reducing maternal smoking
- Increased levels of breastfeeding
- Improving the quality of diet and exercise within families

Maternity, health visiting and children's centre services will concentrate on these areas as they have the greatest potential for preventative action

### **Further information:**

Derbyshire County PCT Local Operating Plan  
Children's Centre strategy

**Be healthy – Secondary Priority 5 - Providing improved health advice and support to young people within schools and other local settings.**

**Planned Outcome**

To improve the quality of health advice and support to children and young people.

**Where are we now?**

- Universal provision of health advice and promotion is provided by schools and settings taking part in the Healthy Schools programme
- Additional support is provided to targeted vulnerable groups, for instance children in care who all have access to dedicated nurses
- 99% of schools are registered to take part in the Healthy Schools programme and over 60% have already achieved an award. This includes 5 Pupil Support Centres and all the special schools
- 90% of schools are graded as outstanding or good for the Be Healthy aspect of Ofsted inspections. Ofsted also rated the health aspect of fostering services as 'outstanding'

**We Will:**

- Continue to provide health support to all children in care via dedicated nurses
- Support schools to promote pupils' physical and emotional health through achievement of the National Healthy School accreditation
- Provide training and guidance to schools in relation to Sex and Relationship Education (SRE) including through the Open Hearts and Theatre in Education 'Forever' programme aimed at reducing homophobic bullying
- Ensure young people get high quality health advice and support as part of integrated youth services

**Further information:**

Derbyshire Healthy Schools Plan  
Children in Care Strategy  
11-19 Strategy

## **Be healthy – Secondary Priority 6 - Tackling problematic drug use.**

### **Planned Outcome**

To reduce drug misuse by young people

### **Where are we now?**

- In common with the national picture, drug misuse is relatively common in Derbyshire
- Young people misuse drugs more often when they live in areas of high deprivation
- Derbyshire has had drug and alcohol treatment services for young people in place for many years. In addition, support is provided for families and carers of drug misusers

### **We Will:**

#### **Prevention**

- Work with all drugs treatment services to ensure that safeguarding of children, families is central to the way services are delivered
- Continue to deliver effective drug and alcohol education that engages all secondary schools and the wider community through the use of theatre in education projects.
- Launch new guidance for schools and all partners

#### **Treatment**

- Commission effective and efficient treatment
- Improve harm reduction, especially the delivery of Hepatitis B vaccination, Hepatitis C testing and sexual health
- Review care pathways to ensure that access to information, advice and support to young people occur at an earlier stage

#### **Community Safety**

- Deliver support to young offenders whose drug use is problematic via targeted youth support services

### **Further information:**

Drug and Alcohol Abuse Action Team Business Plan 2009-10

Derbyshire County PCT Local Operating Plan

# **Stay Safe** - Safeguarding Children and Young People in Derbyshire

Keeping Derbyshire children safe is our top priority.

## **Joint Strategic Needs Assessment Summary**

Derbyshire has a well-established Local Safeguarding Children's Board which ensures that everyone works together to keep children and young people safe and that people with different skills including from the Police, Health, Connexions, LSC, schools, County Council and the private, voluntary community and independent sectors work together to protect children.

The Safeguarding Children Board is pro-active in promoting the safety of children and young people. The board's aims and plans are set out in its Business Plan and progress against these is set out in its Annual Report. A wide range of multi-agency safeguarding training is provided for workers and managers at all levels.

The majority of children grow up safely. However, a small minority of children are the victim of abuse and agencies provide specialist support to protect these children. Work continues to better identify the needs of vulnerable children and to provide preventative services before problems become acute.

Young people tell us that bullying and the fear of bullying is a real concern for them. Despite anti-bullying initiatives in schools and in respect of cyber-bullying, the numbers of reports of bullying incidents remain high.

## **Summary of key achievements and outcomes**

During the lifetime of the Children and Young People's Plan 2006-09, there has been a strong drive to improve the safety of young people in Derbyshire.

The incidence of child abuse and neglect has minimised by:

- A project to establish consistent thresholds for referrals between agencies.
- Monitoring and improving child protection work by an externally accredited quality audit process (ISO 9001) within social care
- Tightening arrangements regarding safe recruitment procedures for staff and volunteers who work with children

- Ensuring inter-agency arrangements to monitor the management of sex offenders in the community are effective
- Sharing the learning from Serious Case Reviews with all relevant staff
- Promoting campaigns about shaken babies and infant sleeping to reduce the numbers of deaths and serious injuries to infants

We have revised our strategy for children in care and set out our ambition for them to be the best they can be both now and in the future.

### **Principles and priorities**

Our aim is to ensure all children and young people are protected from harm and helped to develop safely.

#### **The key principles are:-**

- Services will share information to get help quickly to any child at risk of harm.
- Services will involve children and young people and parents and carers in the planning and review of services and parents and carers in decisions about their children.
- Services will offer support to families when they are having serious difficulties.
- Services will build strong links with services for adults to ensure parents get the help and support they need to keep children and young people safe.

#### **Our key priorities are:**

1. Protecting children from abuse. We will ensure that the Safeguarding Children Procedures are followed for all children and the recommendations of 'The Protection of Children in England: a Progress Report' written by Lord Laming are fully implemented
2. Reducing the severity and numbers of children who are bullied

Our **Secondary Priorities** are:

1. Further developing services to prevent and to tackle the impact of domestic abuse
2. Improving personal safety and reducing the number of children and young people injured or killed in accidents
3. Reducing the number of children and young people missing from home or from care.
4. Providing stable and consistent places for children in care to live in

## **Stay Safe – Key Priority 1 - Protecting children from abuse by ensuring that the Safeguarding Children Procedures are followed for all children.**

### **Planned Outcome**

To reduce the number of children who are abused and where abuse does occur to prevent further abuse.

### **Where are we now?**

- Inspection reports indicate that the standard of care provided by services in Derbyshire is good. Use of quality assurance systems ensures that high standards are maintained
- The numbers of children in need of a child protection plan and the numbers referred to social care for assessment are rising. This may reflect the increased awareness of staff and the public in spotting the signs of abuse
- The key messages from serious case reviews have been acted upon where the protection of children can be improved
- We have promoted information campaigns aimed at both professional staff and parents on subjects such as safe sleeping for infants and shaken babies

### **We Will:**

- Continue to follow inter-agency child protection procedures for all children that require it. We will review and update these procedures in light of evidence from serious case reviews, management reviews and evidence based good practice
- Fully implement the recommendations of Lord Laming's 'The Protection of Children in England: a Progress Report'
- Introduce ContactPoint, the national database
- Develop systems to reduce administrative burdens on social care staff and increase the amount of time spent in direct contact with families
- Appoint an independent chair to the Safeguarding Children's Board
- Improve induction training, supervision and support of newly qualified social workers

## Further Information

Derby and Derbyshire Safeguarding Children Procedures  
 Derbyshire Safeguarding Children Board Business Plan 2007-10  
 Meeting the Needs of Derbyshire Children

### Other measures (from the National Indicator Set)

Ref	Indicator	Baseline	Planned	Future Targets		Lead Responsibility
		2007/08	2008/09	2009/10	2010/11	
NI60	Core assessments for children's social care that were carried out within 35 working days of their commencement	76	82	82		Ian Johnson
NI64	Proportion of child protection plans ended, lasting 2 years or more	4.4	5	5		Ian Johnson
NI65	Children becoming the subject of a Child Protection Plan for a second or subsequent time	11.2	14 or below	14 or below		Ian Johnson
NI67	Child protection cases which were reviewed within required timescales	100	100	100	100	Ian Johnson
NI68	Referrals to children's social care going on to initial assessment	48.8	66	66		Ian Johnson

## **Stay Safe – Key Priority 2 - Reducing the severity and numbers of children who are bullied**

### **Planned Outcome**

To reduce all bullying, including reducing the fear of bullying.

### **Where are we now?**

- Derbyshire's anti-bullying strategy has been further developed to tackle electronic bullying and community issues
- Issues of racism are being tackled including Islamophobia via touring theatre performances
- Safe practices within schools and childcare settings are promoted as a continuing priority. Single Equalities Plan *'Belonging, Difference and Equality: Resources and guidance for school improvement planning'* has been written for use by schools in dealing with sex, race and disability discrimination and community cohesion
- Children and young people tell us that bullying is a problem both in schools and within their communities. The OfSTED TellUs3 survey for schools in 2008 reported that 29% of young people said that they had been bullied in the last 12 months.
- Most schools have anti-bullying strategies in place via the 'ABC scheme' but these need to be more effective
- A strategy to tackle electronic bullying has been developed

### **We Will:**

- Undertake further surveys of young people in schools and children's homes in order to better understand the nature and levels of bullying in all settings
- Extend the use of Derbyshire's anti-bullying ABC Scheme to all settings: schools, children's homes, youth service settings and voluntary and independent sector organisations
- Further develop the 'Playground Pals' scheme in primary schools
- Develop a scheme to combat bullying in the community in conjunction with partners in community safety
- Share existing effective strategies between schools and settings

### **Further information:**

Derbyshire anti-bullying strategy

**LAA Priority Indicator and target**

Ref	Indicator	Planned	Future Targets		Lead Responsibility	Contributes to Council plan
		2008/09	2009/10	2010/11		
NI 69	Children who have experienced bullying	51 (baseline year)	49.1	47.1	Ian Johnson	Stay safe

**Stay Safe – Secondary Priority 1 - Further developing services to prevent and to tackle the impact of domestic abuse.**

**Planned Outcome**

To reduce the impact of domestic abuse on children and young people.

**Where are we now?**

- A review of arrangements to reduce domestic abuse has led to amendments to the safeguarding procedures, and strengthened the multi-agency protocol on domestic abuse
- £500,000 has been invested in Domestic Abuse services provided by the voluntary and community sector and commissioned via new joint agency commissioning arrangements
- The preventative strategy has identified that along with poverty and family break-up, the prevalence and impact of domestic abuse is a primary source of disadvantage to children
- When national prevalence statistics are applied to Derbyshire, as many as 18,000 children may live with domestic abuse each year

**We Will:**

- Monitor the effectiveness of preventative services and re-commission them in light of identified patterns of need
- Further develop systems for referral between police, adult mental health and adult drug and alcohol services, where domestic violence may put a child at risk of abuse or neglect
- Develop training programmes for workers across all agencies to recognise the signs of domestic abuse and how best to support children and families

**Further information:**

Preventative Strategy

Derbyshire Multi-Agency Domestic Abuse Strategy

Community Safety Strategy

**Stay Safe – Secondary Priority 2 - Improving personal safety and reducing the number of children and young people injured or killed in accidents.**

**Planned Outcome**

Reduction in the number of children seriously injured or killed especially in road traffic accidents.

**Where are we now?**

- Although the numbers of children killed or seriously injured on Derbyshire’s roads has fallen in recent years, it remains too high.
- Children in deprived areas are more likely to suffer injuries as a result of accidents and fires.

**We Will:**

- Continue to promote road safety in schools and settings
- Promote safe routes to school
- Support the work of the Derby and Derbyshire Road Safety Partnership in campaigns to improve road safety
- Promote the provision of smoke alarms via children’s centres and other settings, especially to vulnerable children and their families
- Develop additional safe play spaces in disadvantaged areas via the Playbuilder project

**Further information:**

Casualty Report 2007 and Strategic Assessment - Derbyshire Road Safety Partnership  
 Derbyshire Fire Service Corporate Plan 2008-13  
 PCT Local Operating Plan

**Measure (from the National Indicator Set)**

Ref	Indicator	Baseline	Planned	Future Targets		Lead Responsibility
		2007/08	2008/09	2009/10	2010/11	
NI48	No of children killed of seriously injured on Derbyshire roads	63 (2004/05)	45	45	42	Ian Stevenson

**Stay Safe – Secondary Priority 3 – Reducing the number of children and young people missing from home or from care.**

**Planned Outcome**

To reduce the number of children who run away repeatedly.

**Where are we now?**

- Developed a single point of contact for reports of children missing from home, school and care
- Developed joint agency protocols and procedures for reporting and providing support to children in care who have runaway
- Developed a ‘runaways’ project to deliver a rapid response to children and young people who are missing and pose a serious risk to themselves or others. Initially launched in the north east of the county, police figures show significant reductions in the numbers of young people who runaway repeatedly

**We Will:**

- Continue support to the countywide runaways projects.
- Provide appropriate individual and family support for young people who are missing from home
- Develop further the inter-agency young people’s housing strategy and appropriate provision.

**Further information:**

Missing from home strategy and procedure

**Measure** (from the National Indicator Set)

Ref	Indicator	Baseline	Planned	Future Targets		Lead Responsibility
		2007/08	2008/09	2009/10	2010/11	
	Children who have run away from home/care overnight Indicator measure is a self assessment score – maximum is 12	11	11	12		Ian Johnson

## **Stay Safe – Secondary Priority 4 - Providing stable and consistent places for children in care to live in.**

### **Planned Outcome**

To ensure there are sufficient places to live which enable children to feel securely attached to their carers.

### **Where are we now?**

- There are just over 540 children in care in Derbyshire of whom nearly 85% live in family placements
- Whilst nearly 88% of children in care have experienced relative stability in their living arrangements, a small minority of children have a lot of disruption in their lives with several moves of home and school
- Although low by national standards, the number of children in care is steadily increasing which has put pressure on our ability to offer local choice of placements
- Children who have stable placements often have better educational outcomes. Although GCSE and A-level results for children in care have improved in recent years, they remain below those of other young people
- We are pro-active in recruiting both foster and adoptive carers
- The high quality of care for young people is shown by outstanding inspection reports in some, but not all, of our children's homes

### **We Will:**

- Increase the amount of choice of placement by increasing the number of foster carers and prospective adoptive parents
- Improve the quality of matching children to the right carers, including placing children close to their homes when it is safe and practical to do so
- Improve the quality of both adoption and fostering standards to achieve 'outstanding' inspection outcomes wherever possible
- Review the commissioning arrangements for managing the demand for placements both internally and with the independent sector
- Raise the quality of care in all children's homes
- Introduce new National Standards to comply with Care Matters

**Further information:**

Children in Care strategy  
Residential care service plan  
Adoption service plan  
Fostering service plan

**Measures** (from the National Indicator Set)

Ref	Indicator	Baseline	Planned	Future Targets		Lead Responsibility
		2007/08	2008/09	2009/10	2010/11	
NI61	Stability of looked after children adopted following an agency decision that the child should be placed for adoption	57.5	78	78		Ian Johnson
NI62	Stability of placements of looked after children: number of moves	13	12	12		Ian Johnson
NI63	Stability of placements of looked after children: length of placement	64.7	69	69		Ian Johnson
NI66	Looked after children cases which were reviewed within required timescales	95	98	98		Ian Johnson

# **Enjoy and Achieve**

## **Joint Strategic Needs Assessment Summary**

Many children in Derbyshire achieve good test and examination results above those of similar areas of the country at all key stages. However many children could get better results and vulnerable groups achieve less well. Poverty affects educational outcomes for some children in Derbyshire - children who receive free school meals are far less likely to achieve 5 A\*-C grades at GCSE than other children. Although GCSE results for children in care have improved in recent years, they continue to achieve below their potential.

Education is being enhanced by improvements in classrooms and school buildings. A major cycle of improvements is being delivered by our Building Schools for the Future and primary school capital programmes.

Innovative approaches such as vocational academies have been developed in Derbyshire and further developments of the 14-19 curriculum are now being undertaken.

Support and challenge is provided to Derbyshire schools by the local authority and is proportionate to how well the school is achieving good outcomes for children. The numbers of schools with poor inspection ratings are relatively low.

Ten secondary schools are taking part in the government's 'National Challenge' to raise the numbers of pupils achieving 5A\*-C GCSE grades to above 30%. Also, the rate of improvement in achieving five A\*-C at Key Stage 4 is slower than that found nationally and in similar areas.

The rates of exclusions from Derbyshire schools are higher than the national average. In particular, children with special educational needs (including disabled children), children in care and children from some minority ethnic groups are excluded from school more frequently.

## **Summary of key achievements and outcomes**

- In the academic year 2007/08, the recorded attendance in Derbyshire schools was the best ever across all types of schools. These outcomes exceed national performance
- Children in care attended primary school more regularly than other children in the academic year 2007/08.

- Children in early years settings achieve higher standards than nationally in terms of their personal, social and emotional development, and in communication, language and literacy
- Standards at the end of Key Stage 1 are well above the national average in reading and above the national average in writing and mathematics
- Standards at the end of Key Stage 2 are above national outcomes and good in mathematics
- The rate of improvement in standards and the proportion of pupils achieving Level 5 or above at the end of Key Stage 3 in English, mathematics and science is greater than similar councils. In English it is also greater than the national trend
- Outcomes for five or more GCSEs at A\* to C, including English and mathematics, are good, although the rate of improvement needs to increase

## **Principles and Priorities**

### **Our principles are:-**

- We will reduce inequality by closing the attainment gaps and improving outcomes for children at all key stages
- We will continue to provide support and challenge to improve the quality of education in all settings in Derbyshire
- We will take prompt action and intervene to prevent failure
- We will develop extended services in and around 21<sup>st</sup> century schools so that all services can work in partnership to remove barriers to achievement
- We will provide effective support services to enable schools, early learning and care settings and other providers to meet the needs of children and young people with additional needs
- We will promote the educational achievement of Children in Care
- We will develop local placements for those with complex needs
- We will promote good attendance and reduce exclusions
- We will work together to make sure that all young people over 16 are in education, employment or training

**Our key priority is:-**

Improving attainment at all key stages and for vulnerable and disadvantaged groups.

**Our supplementary priorities are:-**

- (1) Providing full access to children's centre services for all children in Derbyshire
- (2) Providing full access to extended services in and around schools for all children in Derbyshire
- (3) Improving attendance and reducing exclusions at all key stages and for vulnerable and disadvantaged groups including children with disabilities and children in care
- (4) Developing 14-19 education

## **Enjoy and Achieve – Key Priority**

**Improving attainment at all key stages and for vulnerable and disadvantaged groups.**

### **Planned Outcome**

To improve the attainment of all children

### **Where are we now?**

Children in Derbyshire achieve good test and examination results above those of similar areas of the country at all key stages. However many children could get better results and vulnerable groups achieve less well.

### **We Will:**

- Support and challenge all schools and settings to improve standards
- Implement the Early Years Foundation Stage Strategy
- Implement the Primary and Secondary Strategies
- Improve continuity and transition between key stages
- Further support target-setting and progress-tracking in schools and settings
- Further develop personalised learning across all phases
- Intervene in schools causing concern
- Implement the National Challenge, Gaining Ground and 5+EM Programmes
- Focus on achieving two levels of progress for all students.
- Promote cross-service working to address under-attainment
- Support and challenge schools and settings to raise the attainment of vulnerable groups
- Support Gifted and Talented Networks utilising good practice currently identified
- Strengthen the focus on reducing inequalities in QDD discussions in schools and settings.
- Promote learning community action planning targeting support for NEET students
- Close the attainment gap in all key stages.

### **Further information:**

14-19 Plan

Education Improvement Annual Service Plan

## LAA Priority Indicators and targets

Ref	Measure Description	Baseline	Planned	Future Targets		Lead responsibility
			2008/09	2009/10	2010/11	
NI092	Narrowing the gap between the lowest achieving 20% in the Early Years Foundation Stage Profile and the rest	36.3	29.4	29	28	Jim Hickman
NI093	Progression by 2 levels in English between Key Stage 1 and Key Stage 2	80.6	86	87	90	Jim Hickman
NI094	Progression by 2 levels in Maths between Key Stage 1 and Key Stage 2	75.4	86	88	90	Jim Hickman
NI099	Children in care reaching level 4 in English at Key Stage 2	59.1	61	65	70	Ian Johnson
NI100	Children in care reaching level 4 in Maths at Key Stage 2	50	55.5	60	65	Ian Johnson
NI072	Achievement of at least 78 points across the Early Years Foundation Stage with at least 6 in each of the scales in Personal Social and Emotional Development and Communication, Language and Literacy	54.9	58.5	60	65	Jim Hickman
NI073	Achievement at level 4 or above in both English and Maths at Key Stage 2 (Threshold)	74.1	82	83	86	Jim Hickman
NI075	Achievement of 5 or more A*-C grades at GCSE or equivalent including English and Maths (Threshold)	47	52.5	56	56	

**Other measures (from the National Indicator Set)**

Ref	Measure Description	Baseline	Planned	Future Targets		Lead responsibility
			2008/09	2009/10	2010/11	
NI076	Reduction in the number of schools where fewer than 55% of pupils achieve level 4 or above in both English and Maths at KS2	14	13	12	11	Jim Hickman
NI078	Reduction in the number of schools where fewer than 30% of pupils achieve 5 or more A*-C grades at GCSE including GCSEs in English and Maths	8	5	3	0	Jim Hickman
NI079	Achievement of a Level 2 qualification by the age of 19	72	73	74	75	Donald Rae
NI080	Achievement of a Level 3 qualification by the age of 19	45	46	47	48	Donald Rae
NI081	Inequality gap in the achievement of a Level 3 qualification by the age of 19	29	28	27	26	Donald Rae
NI082	Inequality gap in the achievement of a Level 2 qualification by the age of 19	27	27	26	25	Donald Rae
NI084	Achievement of 2 or more A*-C grades in Science GCSEs or equivalent	48.6	49	49.5	50	Jim Hickman
NI085a	Post-16 participation in physical sciences (A Level Physics)	200	199	205	210	Jim Hickman
NI085b	Post-16 participation in physical sciences (A Level Chemistry)	278	320	325	330	Jim Hickman
NI085c	Post-16 participation in physical sciences (A Level Maths)	502	570	575	580	Jim Hickman

NI089a	Number of schools in special measures	2 (baseline year)	3	1	Jim Hickman
NI089b	Average amount of time spent by schools in special measures (months)	Baseline to be established			Jim Hickman

**Enjoy and Achieve – Supplementary Priority 1**  
**Providing full access to children’s centre services for all children in Derbyshire**

**Planned Outcome**

Children’s centres act as the local access point to services for young children and their families. By April 2010, services provided by children’s centres will be available to **all children in Derbyshire**.

**Where are we now?**

Children’s centres are central to how services are delivered in Derbyshire. Based in local communities, children’s centres are the access point to a full range of universal and targeted services for babies, young children and their families.

In recent years, 42 children’s centres have been developed across the county. The centres provide integrated services including early education, childcare, family support and outreach services, Job Centre Plus and information, advice and personal signposting.

**We Will:**

- Develop a further 12 Children’s Centres to complete coverage across the whole of Derbyshire by April 2010
- Develop mobile and satellite centres to enable families in rural areas to access children’s centre services
- Deliver key initiatives via children’s centres e.g. advice and support with healthy eating, breastfeeding, signposting to welfare rights advice, safe sleeping for babies etc
- Offer support and challenge to Children’s Centres based on monitoring of the centre’s self-evaluation against key targets
- Ensure that children with learning difficulties and/or disabilities can fully access children’s centre services

**Further information:**

Children’s Centre strategy

## **Enjoy and Achieve – Supplementary Priority 2**

### **Providing full access to extended services in and around schools for all children in Derbyshire**

#### **Planned Outcomes**

To ensure that all children can access extended services provided in and around schools.

#### **Where are we now?**

- Extended services are developed around the majority of Derbyshire schools with provision provided in partnership with statutory, independent and voluntary providers of services
- Development is uneven across the county
- Safer Schools partnerships with the Police have developed in a number of secondary schools and have improved the actual and perceived safety of young people
- Access to extended services includes that for disabled children attending special schools, but this presents significant issues around transport

#### **We will:**

- Ensure all schools provide access to the full core offer by September 2010
- Develop with partners an exemplar Not For Profit company to manage Extended Services activity in and around a school in the BSF programme
- Continue to provide support and training to schools and partners to ensure Extended Services Agenda is embedded in school planning
- Support and develop Extended Services for vulnerable children and young people, including those with a disability
- Measure the impact and quality of provision of Extended Services at a County/District/Cluster/School level

#### **Further information:**

14-19 Plan

Extended services in and around schools strategy

Derbyshire Policing plan 2008-11

**Measure** (from the National Indicator Set)

Ref	Measure Description	Baseline	Planned	Future Targets		Lead responsibility
			2008/09	2009/10	2010/11	
NI088	Percentage of schools providing access to extended services		42	80	100	Donald Rae

## **Enjoy and Achieve – Supplementary Priority 3**

**Improving attendance and reducing exclusions at all key stages and for vulnerable and disadvantaged groups including children with disabilities and children in care.**

### **Planned Outcome**

To reduce exclusions from schools and increase school attendance

### **Where are we now?**

Most children and young people attend school regularly and this contributes to many of them achieving good results from their education. However some children do not attend regularly and their levels of achievement are correspondingly low. Children who do not attend regularly are often from disadvantaged groups

The efforts of schools and support services resulted in attendance figures for 2007-08 being the best ever recorded in both secondary and primary schools. The attendance of children with learning difficulties and disabilities who attend special schools also increased. Having increased attendance, attention will now be focused on reducing the number of persistent absentees

Exclusions from Derbyshire schools are higher than the national average and children with special educational needs and from some ethnic minorities are more likely to be excluded

### **We will:**

- Continue to increase school attendance with an increased focus on reducing the number of children who are persistently absent from school.
- Reduce exclusions from school by promoting
  - **Universal strategies** aimed at improving the behaviour of all pupils including further support for the development of inclusive behaviour policies
  - **Targeted strategies** which will provide targeted help to pupils at risk of being excluded by better assessing needs and providing family, parenting and school based support services
  - **Specialist strategies** to provide specialist inter-agency support to children who have been or are about to be excluded from school

### **Further information:**

Derbyshire Attendance Strategy

Derbyshire Inclusion Strategy 2009-11

### LAA Priority Indicators and targets

Ref	Measure Description	Baseline	Planned	Future Targets		Lead responsibility
			2008/09	2009/10	2010/11	
NI087	Secondary school persistent absence rate	6	5.7	5.0	4.8	France James

### Other measure (from the National Indicator Set)

Ref	Measure Description	Baseline	Planned	Future Targets		Lead responsibility
			2008/09	2009/10	2010/11	
NI086	Secondary schools judged as having good or outstanding standards of behaviour		86			Jim Hickman

## **Enjoy and Achieve – Supplementary Priority 4 Developing 14-19 education**

### **Planned Outcomes**

To offer a wide range of curriculum alternatives to young people to maintain high levels of engagement with education and training.

### **Where are we now?**

Innovative pilot approaches to developing 14-19 education have already been successfully introduced in Derbyshire. Examples include the introduction of diplomas and vocational academies. Apprenticeships, diplomas and the foundation learning tier activities are now to be made available to many more young people.

### **We will:**

- Continue to support learning communities as they develop the new 11-19 curriculum
- Implement the County Diploma strategy
- Increase the number of young apprenticeship programmes, especially in areas with low participation in the programme
- Increase the number of 16-19 apprenticeships undertaken by Derbyshire residents, by 12%
- Develop Derbyshire's approach to the Foundation Learning Tier, including alternative curriculum provision in every area
- Review how learning provision from third parties is commissioned
- Increase participation in learning of 16-19 year olds, narrowing the differentials between districts
- Review the provision of information, advice and guidance, ensuring that every young person is able to access impartial advice
- Further develop the 14-19 Prospectus
- Develop a facilities strategy for 14-19 provision across the county bringing together plans for the LA (including BSF), the LSC and LSPs.
- Develop and implement plan in response to the transfer of duties from the LSC
- Review 16-19 provision in south east Derbyshire, including consideration of a new, post 16 institution
- Review and implement a revised 14-19 Transport Plan
- Ensure that vulnerable young people, including those with a disability, maximise access to learning and achievement, up to age 19

**Further Information:**

11-19 Strategy

14-19 Plan

**Measure** (from the National Indicator Set)

Ref	Measure Description	Baseline	Planned	Future Targets		Lead responsibility
			2008/09	2009/10	2010/11	
NI090	Take up of 14-19 learning diplomas	Baseline to be established			Donald Rae	

# MAKE A POSITIVE CONTRIBUTION

## Joint Strategic Needs Assessment Summary

A developing network of elected forums has provided opportunities for children and young people to become involved in contributing to key decisions made by public services. The network includes the Derbyshire Youth Council, Youth Councils in every district and most schools. In addition, Caring Voice is a representative group of children in care.

The youth council has led decision making about which projects the Youth Opportunities Fund has been spent on.

Children's Trust partner agencies routinely consult with both children and young people and with parents and carers. Schools increasingly involve children in developing a personalised approach to their education and high numbers of children in care are involved in their review meetings.

Campaigns to project positive images of children and young people are run regularly to combat negative media images.

## Summary of key achievements and outcomes

- A broad range of activities ensure the participation of young people in decision-making
- There has been an increase in the availability and use of advocacy services.
- The proportion of young people aged 13 to 19 reached by publicly-funded youth services is high
- There has been a decrease in the number of first-time entrants to the youth justice system
- The proportion of looked after children who were given a final warning, reprimand or conviction has fallen but remains well above the national average and the average for similar councils

## Principles and Priorities

Our **Key principles** are:

In order that children and young people can take a full and active part in their own development:-

- We will improve support to parents and carers to promote the positive social development of children and young people by further developing the parent support strategy

- We will further develop effective consultation, involvement and participation mechanisms to ensure that the voice of children and young people influence both decisions about their own lives as well as future policy and service development.
- We will provide information to children and young people and their families about services that are available to them
- We will create opportunities for young people to engage in volunteering
- We will develop positive activities for young people
- We will reduce youth crime in Derbyshire
- We will celebrate children and young people's achievements

**Our key priority is: -**

To increase the range of positive activities, incorporating sport and community safety activities

**Our secondary priorities are:-**

1. Further development of the new integrated youth support structure to offer young people more effective services
2. Further develop arrangements for the systematic involvement, participation and consultation with children and young people and parents and carers
3. Reducing offending and anti-social behaviour particularly final warnings and convictions of children in care
4. Involving more young people in reviewing and planning their care and education
5. Promoting a positive image of children and young people in Derbyshire
6. Creating opportunities for volunteering for children, young people and others

## **Make a positive contribution – Key Priority 1**

### **Increase the range of positive activities, incorporating sport, cultural and community safety activities**

#### **Planned Outcomes**

To offer recreational activities to young people in school, community and other settings.

#### **Where are we now?**

- A large range of positive activities are already provided in Derbyshire by schools, the youth service, voluntary community and independent organisations, district councils, Police, Fire Service and other statutory organisations
- Significant increases in funding have allowed an expansion in the number of positive activities provided. Young people themselves via the Youth Council have decided on which projects much of this money has been spent
- Multiple short term funding streams means that activity projects are often short term and not always organised systematically
- A wide range of activities are well attended and are valued by young people and adults alike. However, young people tell us that they want more 'places to go, things to do'
- The wider community also tell us they want more positive activities for young people, linking this to fears about minor crime and anti-social behaviour. Positive activities can also discourage young people from misusing alcohol
- The County Council has launched a 'Too Doo' website and publicity campaign to give young people information about positive activities in their area

#### **We will:**

- Increase the number of disabled young people participating in positive activities
- Implement the B\_safe Friday and Saturday evening project in targeted districts
- Increase the range of out of school activities at appropriate times including weekends and school holidays and focusing on the engagement of disadvantaged and marginalised young people
- Increase young people's direct control and influence in the allocation and evaluation of district positive activities funding and district Youth Capital Funds
- Increase the involvement and influence of disabled young people and other under represented groups in the District Young People's Councils

- Develop systematic and routine arrangements to increase young people's active and meaningful participation in shaping the local offer of things to do and places to go
- Implement the outcomes of the review of the Physical Education and School Sport Service including increased assistance to Derbyshire Sport

**Further Information:**

11-19 plan                      Positive Activities strategy and action plan                      Youth Support Strategy

**LAA Priority Indicators and targets**

Ref	Measure Description	Planned	Future Targets		Lead responsibility
		2008/09	2009/10	2010/11	
NI110	Young people's participation in positive activities PSA 14	69.6 (baseline year)	76.5	84.5	Donald Rae

**Other measures** (from the National Indicator Set)

Ref	Measure Description	Planned	Future Targets		Lead responsibility
		2008/09	2009/10	2010/11	
NI199	Children and young people's satisfaction with parks and play areas %	36.8 (baseline year)	38	40	David Connor

## **Make a positive contribution – Secondary Priority 1**

**Further development of the new integrated youth support structure to offer young people more effective services.**

### **Planned Outcomes**

To offer young person-centred delivery of information, advice and guidance, support, development opportunities and positive activities.

### **Where are we now?**

- Seven District Managers now directly manage or oversee the support services for 11 – 19 year olds
- As a pathfinder authority for targeted youth support , services have been reshaped to deliver a service to young people in a better organised, more timely way
- Services are being developed on a 'Team around the School' model ensuring the effective integration of education and support services

### **We will:**

- Review the role and functions of youth service, Connexions and other services.
- Develop fully targeted services to young people out of learning, for whatever reason
- Ensure that appropriate support is provided to young people in receipt of specialist services
- Develop Safer Schools partnerships in selected schools as part of 'Team around the schools and its local community' developments
- Improve transition to secondary schools by identifying in Year 7 young people who may require targeted interventions to achieve their best possible outcomes
- Reduce any negative impacts of transitions on a young person's personal and learning development, with particular focus on:
  - Primary to secondary
  - Key Stage3 to Key Stage 4
  - Key Stage 4 to post 16 learning
  - 18/19 to adult learning, support, independent living

**Further information:**11-19 Plan

Youth Support Strategy and plan

**Make a positive contribution – secondary priority - 2**

**Further develop arrangements for the systematic involvement, participation and consultation with children and young people and parents and carers**

**Planned Outcomes:**

To ensure children and young people and parents and carers are fully involved in how services are provided and developed

**Where are we now?**

- considerable consultation takes place with individual children and their families at a case work level
- children and parents are increasingly involved in planning their education targets
- a network of county, district, school and children in care councils has been developed
- innovative work has been undertaken with children with learning disabilities about deciding what sort of short break services they would like developing
- consultation is not systematically organised or co-ordinated

**We will:**

- adopt a Charter for Participation for Children and Young People
- establish a panel to oversee all consultation and involvement activity
- adopt a common set of standards to underpin consultation with children and young people
- develop further consultation with parents and carers

**Further Information**

Strategy for the involvement of children, young people and families in service provision

**Make a positive contribution – key priority 3**  
**Reduce the amount and seriousness of youth offending**

The Derbyshire Youth Offending Service lead arrangements to reduce youth crime in Derbyshire – full details are available in the Chief Executives Department Service Plan.

Other children's services agencies work in partnership with the YOT to reduce youth crime in line with the following priorities:

- Reduce re-offending rates
- Reduce use of custody
- Effective safeguarding processes
- Education / training / employment for young offenders
- Accommodation for young offenders
- First time entrants into youth justice system
- First time entrants into court
- Effective risk management processes
- Reducing offending by children in care

**Further information:**

Community Safety Plan

Youth Justice Plan 2008-10

**Make a positive contribution – secondary priority 4**  
**Involving more young people in reviewing and planning their care and education**

**Planned Outcomes**

To ensure that children, young people and their families are fully involved in planning the education and care services that they receive.

**Where are we now?**

- Considerable consultation takes place with individual children and their families at a case work level
- Children and parents are increasingly involved in planning their education targets
- The proportion of children in care participating in their reviews is high but has fallen from 92% to 88% in 2008

**We will:**

- Increase the number of children in care participating in their reviews by appointing an additional Independent Reviewing Officer
- Continue to support and challenge schools and settings to help children and young people to have a personalised approach to their care and education

**Make a positive contribution – secondary priority 5**  
**Promoting a positive image of children and young people in Derbyshire.**

**Planned Outcomes**

To improve the image of young people in Derbyshire.

**Where are we now?**

- Disproportionate reporting of youth crime and anti-social behaviour has created a negative image of young people that does not reflect the achievements and good behaviour of most children and young people in Derbyshire
- The county council and partner agencies have run campaigns to promote positive media images of children and young people

**We will:**

- Continue to promote stories that highlight the achievements and aspirations of young people including those of disadvantaged groups
- Promote the positive activities programmes as examples of young people's achievements

**Make a positive contribution – secondary priority 6**  
**Creating opportunities for volunteering for children, young people and others.**

**Planned Outcomes**

To provide opportunities for young people to help their communities and enhance their personal development through volunteering.

**Where are we now?**

- Many young people currently volunteer to help others through mentoring schemes, voluntary and community sector organisations and the Duke of Edinburgh's Award Scheme
- A volunteering action plan has been developed which aims to provide
  - an increase in the number of young people directly involved in volunteering
  - an increase in adult support for young volunteers
  - appropriate volunteering opportunities for young people

**We will:**

- Work with voluntary and community sector partners to increase the number of young people who volunteer their time to help others, including the V project
- Better utilise existing structures like school councils and youth forums to promote the concept of volunteering
- Develop a formal policy for volunteering across the Children's Trust that outlines the support given both to adults and young people to volunteer

# ACHIEVE ECONOMIC WELL-BEING

## Joint Strategic Needs Analysis Summary

- The number of young people involved in apprenticeship programmes and studying for diplomas has increased
- There are a low and declining proportion of teenage mothers who are in education, employment or training.
- Child poverty is a persistent problem, especially in the most disadvantaged parts of the county
- The impact of the economic downturn on children is already evident with increasing numbers of young people who are NEET, increased demands for free school meals and requests for support to welfare rights services.

## Summary of key achievements and outcomes

- The proportions of young people achieving Levels 2 and 3 qualifications by the age of 19 are good and improving.
- The proportion of care leavers, aged 18 to 21, who are supported by a pathway plan and personal advisor is high.
- The number of young people completing an apprenticeship has increased significantly and is above national averages
- The 2008 target for reductions in young people who are Not in Education, Employment or Training (NEET) was met.

## Principles and Priorities

Working on the principle of improving the economic well being of all people in Derbyshire, we will work with others to increase employment opportunities in the County. This work is being intensified during the economic downturn.

The **key principles** are:

- Make sure no group of people are disadvantaged
- Provide high quality childcare provision to help parents and carers to work
- Provide clear information about welfare benefits
- Work with others to improve the quality of and access to housing

- Build on the work of the 11-19 partnership to increase education and training opportunities such as apprenticeships and diplomas
- Provide high quality information, advice and guidance services with fully integrated careers education and guidance in schools and colleges

**Our key priority is:**

Reducing the numbers of young people aged 16 – 19 not in education, employment or training (NEET). This work will be particularly targeted at young people who are young mothers, care leavers and young people with learning difficulties and/or disabilities.

**Our secondary priorities are: -**

1. Reducing child poverty
2. Improving services for homeless young people
3. Ensuring the sufficiency of childcare including for children with learning difficulties and/or disabilities

### **Achieve Economic Well-being – Key Priority 1**

**Reducing the numbers of young people aged 16 – 19 not in education, employment or training (NEET). This work will be particularly targeted at young people who are young mothers, care leavers and young people with learning difficulties and/or disabilities.**

#### **Planned Outcome**

Reducing the numbers of young people who are NEET.

#### **Where are we now?**

Although the 2008 NEET target was met, the economic downturn is already resulting in rises in the numbers of young people who have lost jobs but have yet to return to education or training. Any large rise in the numbers of young people who are NEET is likely to affect disadvantaged and vulnerable groups of young people.

#### **We Will:**

- Continue to achieve the nationally set NEET reduction targets and manage the transition to increasing the number of young people, 16-18, in appropriate learning
- Increase the number of 17 year olds in learning
- Promote apprenticeships by public authorities. In 2009/10 Derbyshire County Council will employ 25 young apprentices including some from vulnerable groups.
- Reduce significant differences in both NEET and learning between districts/learning communities, and key vulnerable groups
  - Care leavers in EET, age 19
  - Young mothers in EET, 16-19
  - Young offenders in EET, both pre and post 16.

#### **Further information:**

NEET reduction action plan

### LAA Priority Indicators and targets

Ref	Measure Description	Baseline	Planned 2008/09	Future Targets		Lead responsibility
				2009/10	2010/11	
NI117	16 to 18 year olds who are not in education, training or employment (NEET)	5.98	6.0	5.7	5.5	Donald Rae

### Other measures (from the National Indicator Set)

Ref	Measure Description	Baseline	Planned 2008/09	Future Targets		Lead responsibility
				2009/10	2010/11	
NI148	Care leavers in employment, education or training	57.7	80	80		Ian Johnson
NI091	Participation of 17 year-olds in education or training	81.7	80	81.3	81.3	Donald Rae
NI164	Working age population qualified to at least Level 3 or higher	46	47	48	49	Donald Rae
NI165	Working age population qualified to at least Level 4 or higher	26	27	28	29	Donald Rae

**Achieve Economic Well-being – Secondary Priority 1**  
**Reducing child poverty**

**Planned Outcome**

To reduce child poverty on the way to meeting central government’s target to eradicate it by 2020.

**Where are we now?**

- In Derbyshire there is an inverse relationship between achievement of 5 A\* to C GCSEs (including English and maths) and the proportion of children in receipt of free school meals
- Free school meal applications are already rising in the economic downturn
- Whilst child poverty is centred on districts in the east of Derbyshire, there are some children living in poverty in all areas
- Employment rates of parents have been higher in recent years assisted by the provision of childcare and support for parents from children’s centres in accessing skills training and Job Centre Plus services

**We Will:**

- Directly provide, and signpost to, advice and assistance about benefits and debt
- Continue to support the most vulnerable children with the flexible vulnerable children’s budget
- Provide access to training opportunities, job centre plus and childcare from Children’s Centres to help parents return to the workforce
- Promote the achievement of qualifications and skills that will enable the next generation of parents to be economically prosperous
- Focus Children’s Trust agencies in Districts on reducing a wide range of inequalities in the areas of greatest deprivation

**Measure** (from the National Indicator Set)

Ref	Measure Description	Baseline	Planned	Future Targets		Lead responsibility
			2008/09	2009/10	2010/11	
NI116	Proportion of children in poverty		Baseline to be established			Frances James

## Achieve Economic Well-being – Secondary Priority 2

### Improving services for homeless young people

#### Planned Outcome

To improve the supply of appropriate accommodation for young people including care leavers and other vulnerable groups

#### Where are we now?

- The runaways project has highlighted the problem of young people who leave home and have no settled accommodation. Projections from national figures suggest that 728 16-24 year olds, including 162 16/17 year olds, are homeless at some point each year
- Many young people move around friend's accommodation – “sofa surfing”
- No one agency holds responsibility for developing accommodation that is available for young people
- Multi-agency partnerships to tackle youth housing issues have been formed

#### We Will:

- Use Common Assessment Framework arrangements to assess young people's needs appropriately
- Complete data collection and needs analysis specific to Derbyshire
- Implement an agreed strategy from December 2009

Ref	Measure Description	Baseline	Planned	Future Targets		Lead responsibility
			2008/09	2009/10	2010/11	
NI147	Care leavers in suitable accommodation	86.5	90	90	86.5	Ian Johnson

### **Achieve Economic Well-being – Secondary Priority 3**

**Ensuring the sufficiency of childcare including for children with learning difficulties and/or disabilities.**

#### **Planned Outcome**

To ensure there is sufficient accessible, affordable, high quality childcare throughout Derbyshire.

#### **Where are we now?**

- Childcare provided by a wide range of providers is well-developed
- Childcare is increasingly provided as part of the core offer of extended services in and around schools
- Demand has already fallen due to the economic downturn and some childcare provision may become economically unviable
- Parents of children with learning difficulties and /or disabilities cannot always access affordable childcare

#### **We Will:**

- Increase the number of high quality early years places by implementing the Quality Improvement Strategy
- Produce Annual Business Health Checks for providers
- Provide one-off financial support to support some providers who are faced with closure but are needed to secure sufficiency locally
- Implement a commissioning strategy to meet gaps in provision
- Secure better access for disabled children by:
  - Support to providers to meet the requirements of the Disability Discrimination Act and the requirement to have equality schemes
  - Promoting the financial support available to the parents of disabled children to fund child care places

**Further information:** Derbyshire Sufficiency Action Plan 2008-11

**Measure** (from the National Indicator Set)

Ref	Measure Description	Baseline	Planned 2008/09	Future Targets 2009/10	2010/11	Lead responsibility
NI118	Take up of formal childcare by low-income working families		Baseline to be established			Frances James

# Disabled children

A programme is underway to transform how services are provided for disabled children and their families. Working closely with people who use our services, we are improving the quality and availability of services and developing a programme of short break services.

## Priorities

Our overall **key priority** is to improve services for disabled children

We will achieve this by tackling the following issues:

- Improving equity of access for disabled children to specialist and support/outreach services
- Developing systematic and routine arrangements for consultation with and involvement of children and young people with learning difficulties/or disabilities
- Developing a full service offer of short breaks for disabled children and their families in Derbyshire

## LAA Priority Indicator and target

Ref	Measure Description	Planned	Future Targets		Lead responsibility
		2008/09	2009/10	2010/11	
NI54	Services for disabled children	Baseline to be established			Frances James

## **Disabled Children – issue 1**

### **Improving equity of access for disabled children to specialist and support/outreach services**

#### **Planned outcome**

- High levels of parental satisfaction in the full range of services available to meet their children's needs
- High levels of satisfaction of disabled children and young people in relation to all dimensions in their lives

#### **Where are we now?**

- Whilst some disabled children and young people receive excellent services, differing levels of service are available in different parts of the county
- Innovative support projects have been developed but access to services can depend on the age of the child or agency involved

#### **We will:**

- Increase the amount of home help service available to disabled children in their own homes
- Increase the number of disabled young people who remain in education, employment and training
- Ensure equal health provision to special schools
- Establish full access to the services of children's centres
- Increase the numbers of disabled children whose care is overseen by a lead professional
- Ensure extended services in and around schools are fully available to disabled children
- Extend leisure opportunities for disabled young people by introducing free gym and swimming access for disabled children
- Implement a range of evidenced based therapy intervention programmes; for example MOVE and specialist neuro-development therapy
- Extend the opportunity for training in SCIP techniques and moving and handling to all providers

#### **Further information:**

Action plan for disabled children 2009-10

Derbyshire PCT Local Operating Plan

## **Disabled Children – issue 2**

### **Developing systematic and routine arrangements for consultation with and involvement of children and young people with learning difficulties/or disabilities.**

#### **Planned Outcome**

To maximise the contribution of children and young people with learning disabilities to developing the services they use

#### **Where are we now?**

Good quality consultation and involvement with young people has taken place in the past but it has been insufficient. This year, consultation with children about short breaks has been recognised as a national exemplar of good practice.

#### **We will:**

- Develop mechanisms to involve young people in CAYA policies e.g. conferences, focus groups, surveys – using appropriate methods of communication
- Adhere to standards in Derbyshire Charter of Participation
- Commission voluntary organisations to undertake specialist consultation as appropriate

#### **Further information:**

Action plan for disabled children 2009-10

Derbyshire PCT Local Operating Plan

## **Disabled Children – issue 3**

### **Developing a full service offer of short breaks for disabled children and their families in Derbyshire.**

#### **Planned Outcome**

To develop a full offer of short break services for disabled children. Satisfaction levels of parents and children will measure success.

#### **Where are we now?**

- Derbyshire is a national pathfinder for the Aiming High project to transform short break services
- Extensive work to design new services has been undertaken following detailed consultation with both parents and carers and children and young people
- New service provision has begun and is increasing

#### **We will:**

- Increase the amount of short breaks by commissioning further services and increasing existing services including:
  - Residential overnight stays
  - Family based overnight stays
  - Day care
  - Extended services around schools
  - Youth activities
  - School holiday schemes
- Increase the take up of direct payments to 120 children
- Continue to involve parents and children in service design
- Involve children in decisions about the award of tenders to provide short break services

#### **Further information**

Aiming high for disabled children project plan  
Derbyshire PCT Local Operating Plan

# 10. Derbyshire Children and Young People's Trust

The driving force behind the partnership arrangements to ensure improved services for children, young people and their families is the Derbyshire Children and Young People's Trust Board.

All publicly funded services for children aged 0-19 years and some older young adults are included in our Trust arrangements. Working in partnership with children and their families, the board provides strategic direction for children's services and is helping to improve joint working between agencies.

The Board includes representatives from the Youth Council.

## **The role of the Trust Board is:-**

<b>Provide Leadership</b>	To ensure that services work in partnership to identify needs, and jointly plan, deliver and evaluate services to improve the life chances of children in Derbyshire. This includes not only County and District Council services such as social care, education, housing and leisure, but also Health Services, the Police, Fire Services and voluntary and community services
<b>Consult</b>	To listen to children, young people and their families and respond to their needs and to consult with the widest possible range of parties.
<b>Allocate Resources</b>	To distribute resources to universal services, which are delivered to all children and young people, target services which address particular areas of need and specialist services for the most vulnerable and disadvantaged young people, in such a way as to have the most significant impact.
<b>Monitor</b>	To monitor progress against priorities and targets identified in the Children and Young People's Plan, to take appropriate action where these are not being met and to ensure performance

management system operates effectively.

**Accountability** To be accountable for the outcomes of the plan

**Commissioning** To commission a broad range of services from providers in the statutory, community, voluntary and private sectors.

### **The Steering Group**

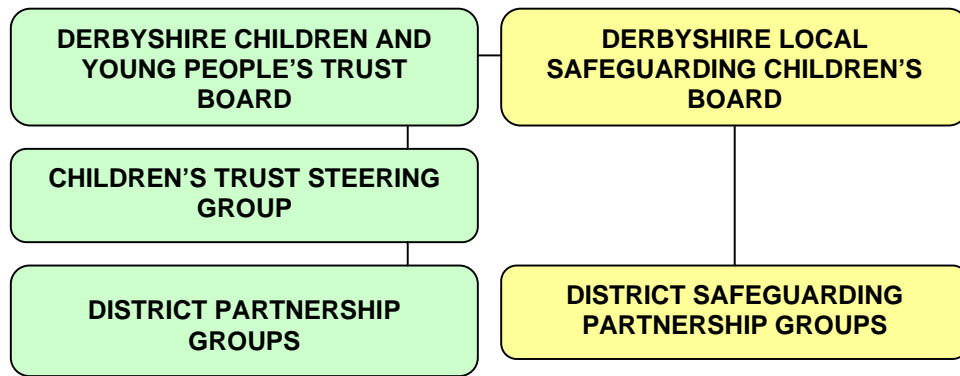
In addition to the Derbyshire Children and Young People's Trust Board, a Trust Steering Group consisting of senior managers is responsible to the Board for the delivery of the Trust's work. It is responsible for:

- Overall planning, evaluation, quality assurance and performance management.
- Providing advice, information and reports to the Trust Board.
- Commissioning services in line with identified priorities.

Essentially, their job is to 'see that it happens'. The group is made up of senior officers and representatives from partner organisations and meets on a regular basis.

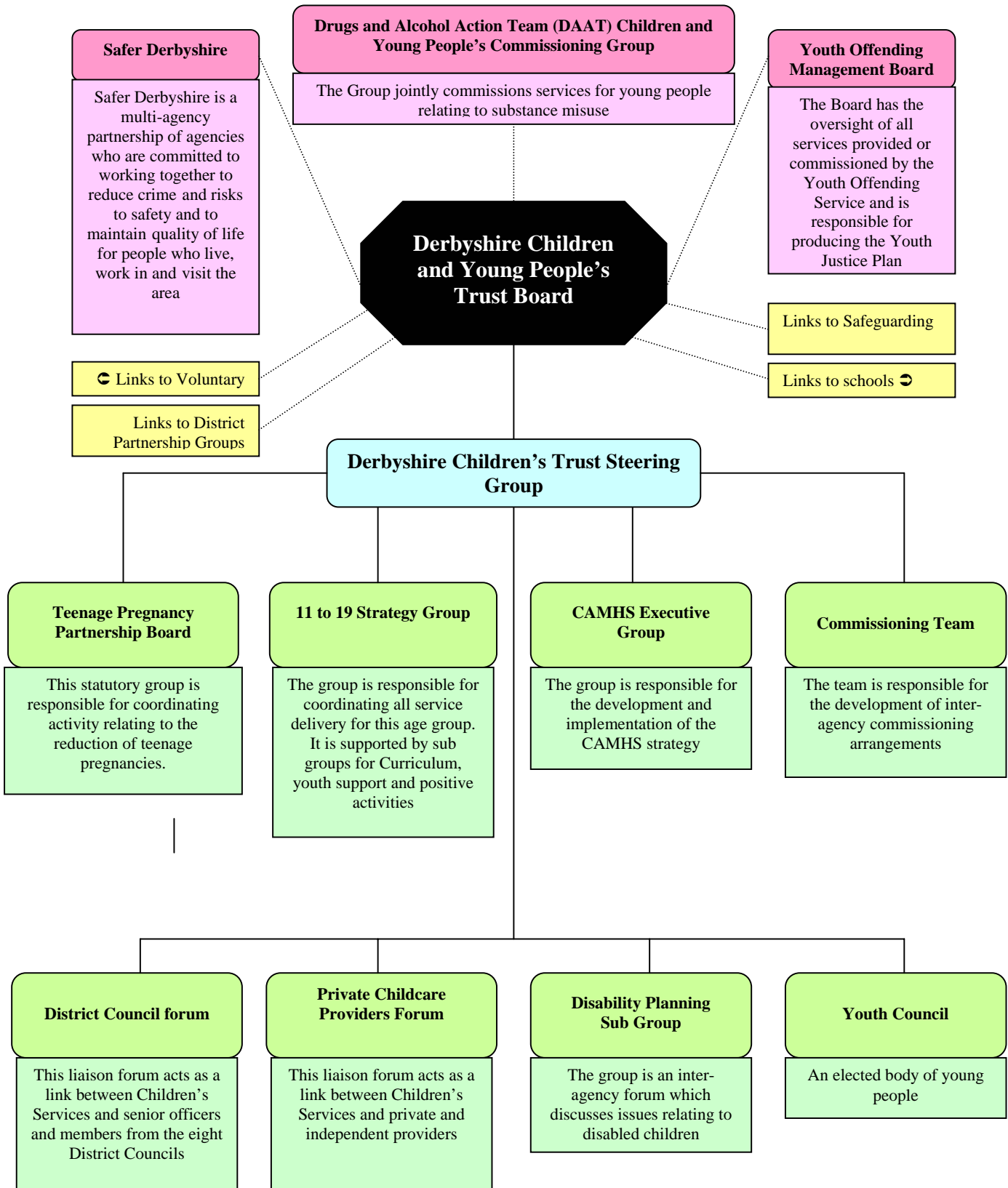
### **District Partnership Groups**

Each of the seven Children's Trust districts has a Children's Trust Local Partnership Group which feeds into the Children's Trust through its Steering Group. Each of the seven districts also has a local Safeguarding Children Partnership which reports directly to the Derbyshire Safeguarding Children Board.

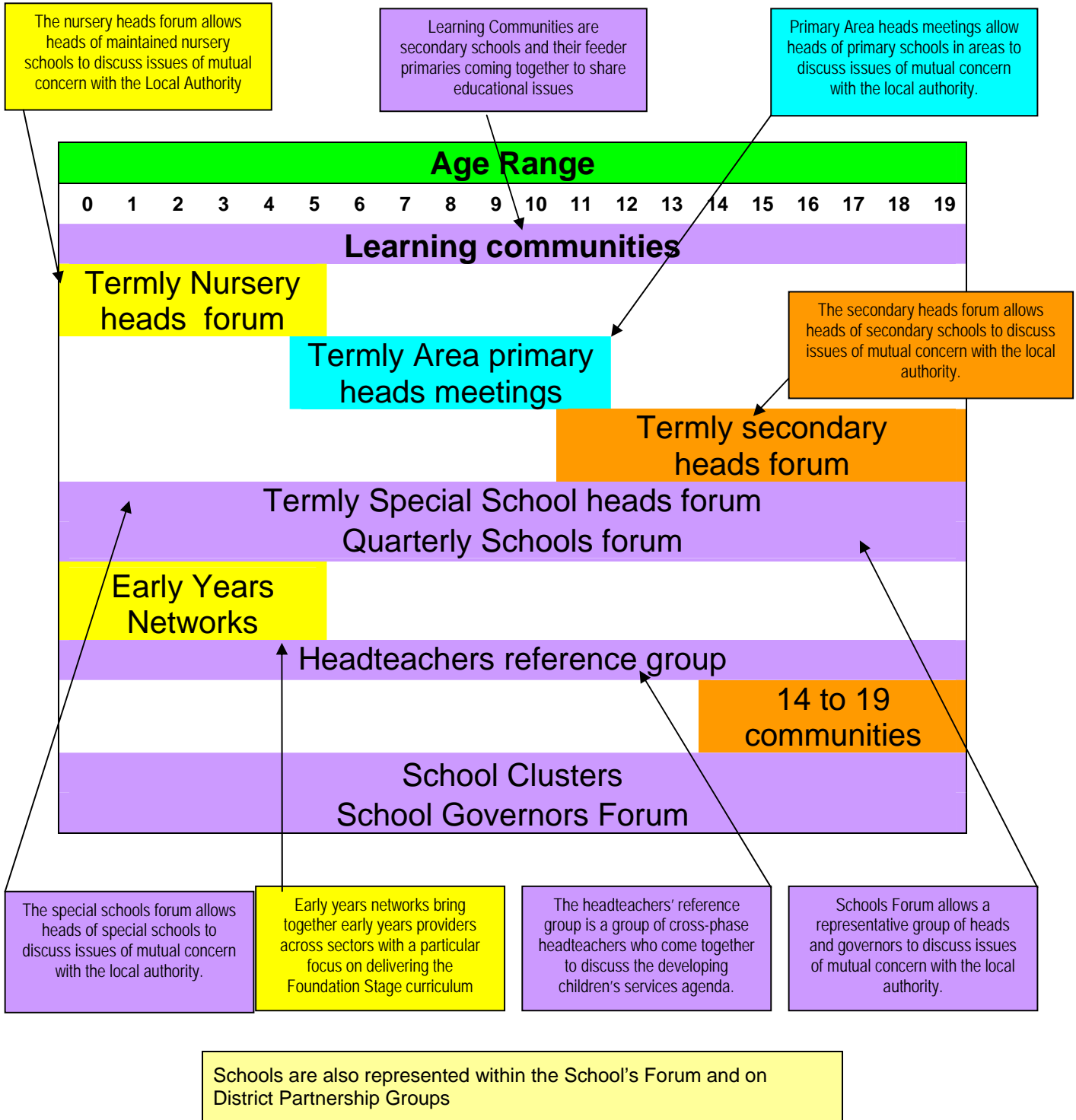


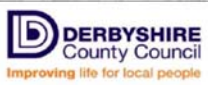
In addition to these groups, The Children's Trust arrangements have a carefully planned set of links to ensure providers of services to children such as schools, colleges and private and third sector providers are well represented.

## Countywide Partnerships Relating to Children and Young People's Services



# Engagement of Schools





# Children & Younger Adults Administrative Areas

