



**BUDGET BOOK
2008-2009**

CONTENTS

| | |
|--|-----------|
| CONTENTS | i |
| INTRODUCTION | 1 |
| Principal Features of the 2008-09 Budget | 1 |
| Budget Setting Process | 2 |
| Revenue Budget | 2 |
| Resources | 3 |
| Area Based Grant | 4 |
| Council Tax | 4 |
| How Council Tax is Calculated | 5 |
| Trends and Comparisons in Council Tax Levels | 6 |
| Business Rates | 8 |
| Personnel Summary | 10 |
| Key Statistics | 12 |
| BUDGET SUMMARY 2008-2009 | 14 |
| SUBJECTIVE ANALYSIS | 15 |
| CAPITAL | 16 |
| EDUCATION | 21 |
| Service Analysis | 21 |
| Subjective Analysis | 21 |
| Subjective Analysis | 22 |
| Analysis of Other Changes | 22 |
| Adult Social Services | 23 |
| Service Analysis | 23 |
| Subjective Analysis | 24 |
| Analysis of Other Changes | 25 |
| ENVIRONMENTAL SERVICES | 26 |
| Service Analysis | 26 |
| Subjective Analysis | 27 |
| Analysis of Other Changes | 28 |
| COMMUNITY & CULTURAL SERVICES | 29 |
| Service Analysis | 29 |

| | |
|--|-----------|
| Subjective Analysis _____ | 30 |
| Analysis of Other Changes _____ | 31 |
| CORPORATE BUDGETS _____ | 32 |
| Service Analysis _____ | 32 |
| CHIEF EXECUTIVE & CORPORATE RESOURCES _____ | 35 |
| Service Analysis _____ | 35 |
| Subjective Analysis _____ | 36 |
| Analysis of Other Changes _____ | 36 |
| STATISTICS _____ | 37 |
| Location _____ | 37 |
| Communications _____ | 37 |
| Urbanisation _____ | 37 |
| Population _____ | 38 |
| Age Structure _____ | 38 |
| Living Arrangements/Marital Status _____ | 39 |
| Households _____ | 39 |
| Ethnicity _____ | 39 |
| Housing _____ | 40 |
| Economic Activity _____ | 40 |
| Industry _____ | 41 |
| GLOSSARY _____ | 42 |

INTRODUCTION

Principal Features of the 2008-09 Budget

- Total Budget Requirement of £459.1m.
- Formula Grant, which includes Revenue Support Grant and National Non Domestic Rates £164.9m.
- Allocation of Area Based Grants £32.4m.
- Band D Council Tax of £1,030.98, one of the lowest County Council increases in England.
- Dedicated Schools Grant of £407.6m.
- Planned spending on capital projects is £102m, which is a decrease of £80m from 2007-08.

The purpose of this publication is to provide information on the County Council's budget for 2008-09 and at the same time give some insight into the context in which it was set. At the back of the document is a glossary of terms. Information about the County Council and its services can be found on the County Council website at www.derbyshire.gov.uk or by contacting the County Council at County Hall, Matlock, Derbyshire, DE4 3AG.

Budget Setting Process

The budget process for 2008-09 followed the timetable described below:

- | | |
|----------------|--|
| September 2007 | Detailed assumption for pay awards and inflation were made and the production of the base budget for 2008-09 commenced. |
| November 2007 | Base budget produced and taken to service committees. Government issued provisional details on the amount of money the County Council will get by way of grants and business rates. |
| January 2008 | The Government confirmed the level of grant and business rates available to the County Council. The cabinet determined a budget and Council Tax levels for 2008-09. A series of Budget Consultations were undertaken with Council Tax payers. |
| February 2008 | The cabinet recommended its budget to Council on February 6 th . Council approved the budget and Council Tax amounts required were issued to the eight borough and district councils who actually collect the tax. |
| March 2008 | Council Tax Bills were issued. |
| April 2008 | The new financial year began. |
| May 2008 | The Local Government Minister makes decisions about the capping of those local authority budgets and/or council taxed he deemed to be excessive. |

Revenue Budget

The County Council's revenue budget for 2008-09 is £459.1 million.

| | £m | £m |
|---|------|--------------|
| Total Budget Requirement 2007-08 | | 389.3 |
| Pay, prices and other increases outside the Council's control | 13.5 | |
| Service pressures | 5.9 | |
| Efficiency measures | -7.3 | |
| Growth in services funded from grants and other income | 40.4 | |
| Decreases in grants and other incomes | 23.9 | |
| Change in debt charges | 3.8 | |
| Increase in internal financing measures | -8.4 | |
| Increase in interest on balances | -2.0 | |
| | | 69.8 |
| Total Budget Requirement 2008-09 | | 459.1 |

Resources

From 2006-07 onwards the Government has replaced the FSS system with a new grant distribution system, known as the Four Block Model. The model is made up of the following elements:-

- A relative needs allocation using Relative Needs Formula (RNF).
- A reduction based on relative resources (the ability to raise council tax).
- A central allocation based on a per head amount.
- An allocation to ensure a minimum increase in grant.

RNF is a purely mathematical calculation and cannot be used to compare levels of spend. However, RNF serves the same purpose as FSS in that it determines the Council's grant entitlement from the Government.

The Council's Formula Grant allocation for 2008-09 is £164.9M.

The four elements that now make up Formula Grant are:

| | £ |
|--------------------|--------------------|
| Relative Needs | 150,909,116 |
| Relative Resources | -51,707,231 |
| Central Allocation | 88,459,082 |
| Floor Damping | -22,745,221 |
| Total | 164,915,746 |

The Dedicated Schools Grant allocation for 2008-09 is £407.6m.

Area Based Grant

For 2008-09 the Government has undertaken a greater share of resources to local authorities in a manner which gives them a greater degree of freedom in how it is spent. As part of this change of approach the Government has moved resources from 34 separate funding regimes into one Area Based Grant (ABG). The ABG has no restrictions on use placed on it, unlike the majority of the separate grants received previously.

The Council's Area Based Grant allocations for 2008-09 are £32.4m.

Council Tax

The actual Council Tax set by the County Council depends on spending decisions, and also on district councils' tax collection rates (tax base) and the surpluses or deficits brought forward from previous years.

The County Council's tax base for 2008-09, as notified by district councils, is 253,827 Band D equivalent properties, an increase of 0.73% over last year. In 2008-09, net surpluses on collection of Council Tax are £92,178, 88% less than last year.

The level of the tax base and the surplus (or deficit) on the collection fund varies from year to year depending on the assumptions made by district councils about changes in council tax banding, new properties and levels of vacancies, and irrecoverable amounts. The tax base includes those district councils, which have elected to reduce the discounts on second homes and long-term empty properties.

In order to fund the improvement in frontline services mentioned above Derbyshire County Council set its Council Tax increase at 3.5% (£34.86 a year / £0.67 a week at band D). This is one of the lowest county council increases where the average increase is 4.0%.

The table below shows the change in Council Tax for all bands for the element of the tax attributable to the County Council:

| Band | Value | 2007-08 | 2008-09 |
|-------------|-------------------|----------------|----------------|
| | | £ | £ |
| A | Up to £40,000 | 664.08 | 687.32 |
| B | £40,000 - £52,000 | 774.76 | 801.87 |
| C | £52,001 - £68,000 | 885.44 | 916.43 |

| | | | |
|----------|--------------------------|---------------|-----------------|
| D | £68,001 - £88,000 | 996.12 | 1,030.98 |
| E | £88,001 - £120,000 | 1,217.48 | 1,260.09 |
| F | £120,001 - £160,000 | 1,438.84 | 1,489.19 |
| G | £160,001 - £320,000 | 1,660.20 | 1,718.30 |
| H | Over £320,000 | 1,992.24 | 2,061.96 |

In Derbyshire 61% of all properties are in Bands A and B. This is higher than the average for Shire Counties, which stands at only 39%.

How Council Tax is Calculated

In determining the level of Council Tax, the council first has to determine its budget requirement for the financial year (£459.1m).

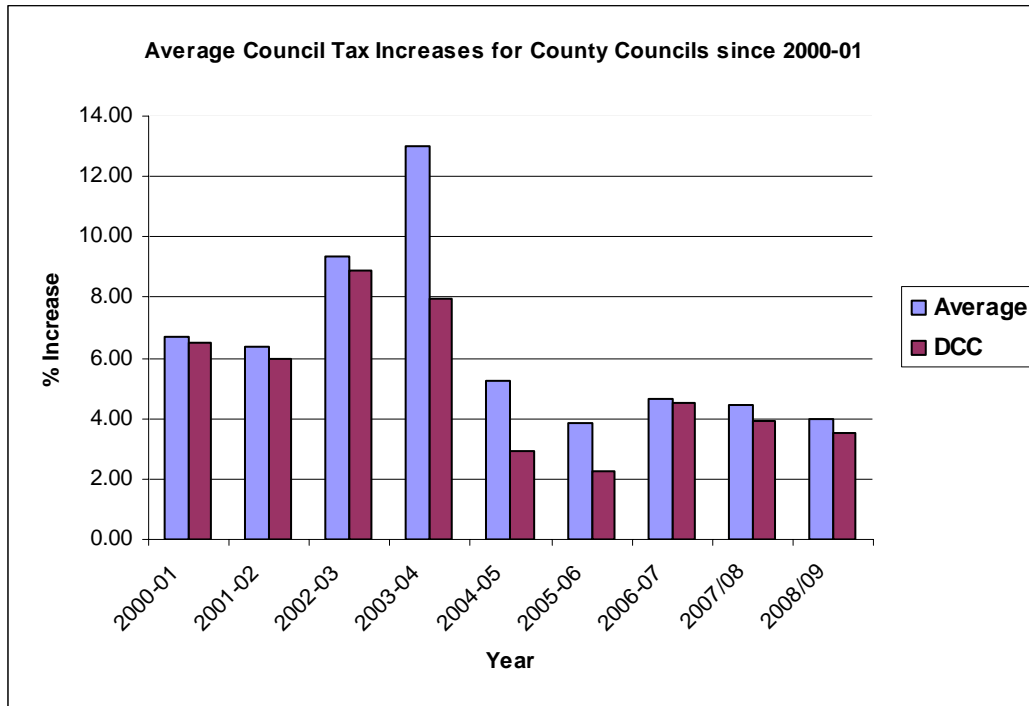
This is the council's planned spending after deducting any funding from reserves and income it expects to raise.

The council then deducts the total amount of Central Government Funding to establish the total amount to be financed by Council Tax. This amount is then divided by the Council Tax-base for the council (the Council Tax-base for a council is equal to the number of Band D equivalent properties). The table below shows how council tax is calculated:

| | £m |
|-------------------------|-------|
| Budget Requirement | 459.1 |
| Less | |
| Business Rates | 144.7 |
| Revenue Support Grant | 20.2 |
| Area Based Grant | 32.4 |
| Council Tax Requirement | 261.8 |

Trends and Comparisons in Council Tax Levels

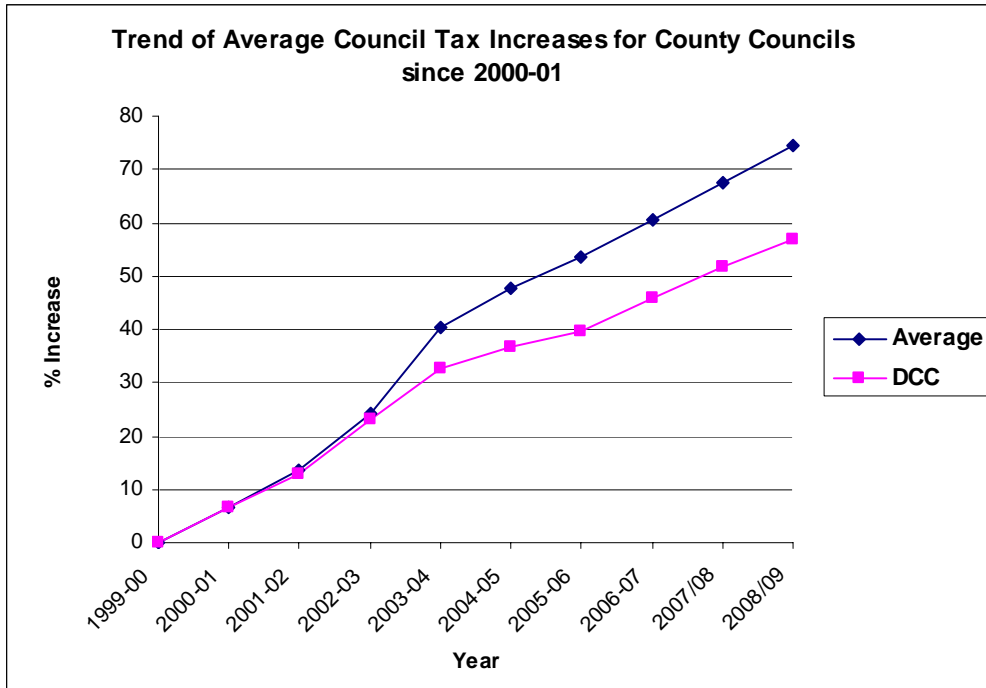
The following chart and accompanying table illustrates the percentage increase in the level of council tax for the County Council over the last seven years, since 2000-01. For comparison purposes, the average level of all County Councils is also shown.



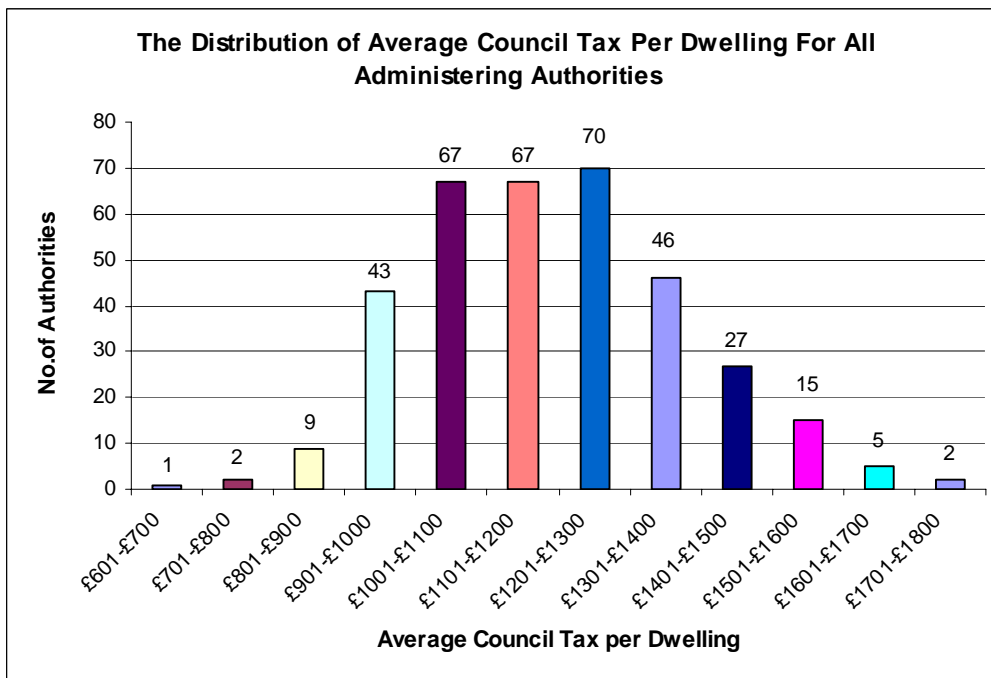
| | 2000-01 % | 2001-02 % | 2002-03 % | 2003-04 % | 2004-05 % | 2005-06 % | 2006-07 % | 2007/08 % | 2008/09 % |
|-----------------------------|--------------|--------------|--------------|--------------|--------------|--------------|--------------|--------------|--------------|
| Average | 6.73 | 6.40 | 9.38 | 13.02 | 5.24 | 3.85 | 4.60 | 4.50 | 4.02 |
| DCC | 6.50 | 5.99 | 8.90 | 7.94 | 2.94 | 2.25 | 4.50 | 3.94 | 3.50 |
| DCC Rank¹ | 16/34 | 17/34 | 23/34 | 33/34 | 34/34 | 34/34 | 30/34 | 30/34 | 30/34 |

The comparison below illustrates the gap between the County Council's Council Tax percentage increase and the average between 2000-01 and 2008-09.

¹ The ranking relates to average council tax percentage increases, in ascending order, for each County Council.



The following chart and accompanying table illustrates the spread of average Council Tax per dwelling for 2007-08 across all administering authorities.



| | | Average Council Tax Per Dwelling 2008-09 (£) |
|-----------------------|-------------------------|---|
| Range: | | |
| Highest | | 1,613.10 |
| Median | | 1,409.21 |
| Lowest | | 687.07 |
| Derbyshire: | Rank² | |
| Amber Valley | 214/354 | 1,420.65 |
| Bolsover | 314/354 | 1,485.99 |
| Chesterfield | 121/354 | 1,383.78 |
| Derbyshire Dales | 280/354 | 1,457.06 |
| Erewash | 179/354 | 1,409.40 |
| High Peak | 230/354 | 1,426.54 |
| North East Derbyshire | 310/354 | 1,482.49 |
| South Derbyshire | 162/354 | 1,402.67 |

Business Rates

Business Rates are set by, and are under the control of, the Government.

All business properties are revalued every five years; the most recent valuation took effect from April 2005.

The same rate in the £ applies across the whole country. The Government has fixed the rate in 2008-09 at 46.2p in the £. This is a 3.9% increase on the rate for 2007-08.

Business rate income is collected by District and Borough Councils and is passed to the Government who then distribute it to local authorities according to the services they provide and the number of residents living in their area.

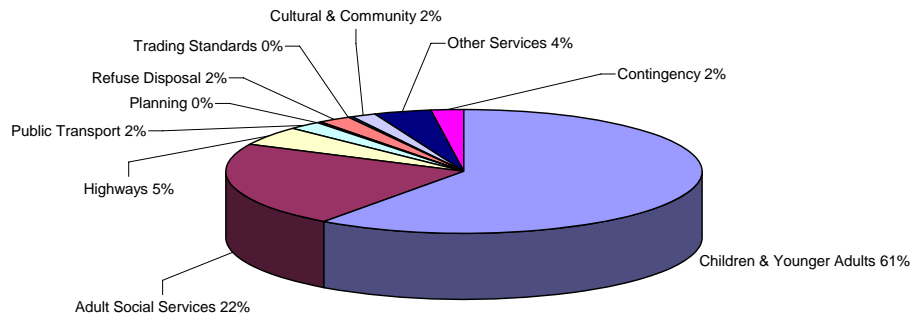
Analysis of Net Expenditure and Funding

The County Council plans to spend, net of capital charges £1,104.0m in 2008-09. Against this it will receive a total of £636.9m in the form of specific government grants, reimbursements and income from sales. The net budget requirement of £459.1m is funded by RSG, Business Rates and Council Tax.

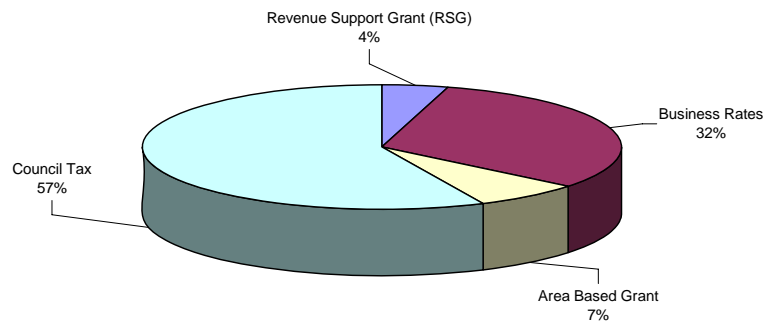
The charts below show gross expenditure by service and the County Council's sources of funding.

² The ranking relates to average Council Tax levels, in ascending order, for each Council Tax administering authority.

GROSS EXPENDITURE BY SERVICE



SOURCES OF FUNDING



Net Expenditure Per Head of Population

The County Council's net expenditure per head of population for services is detailed in the table below:

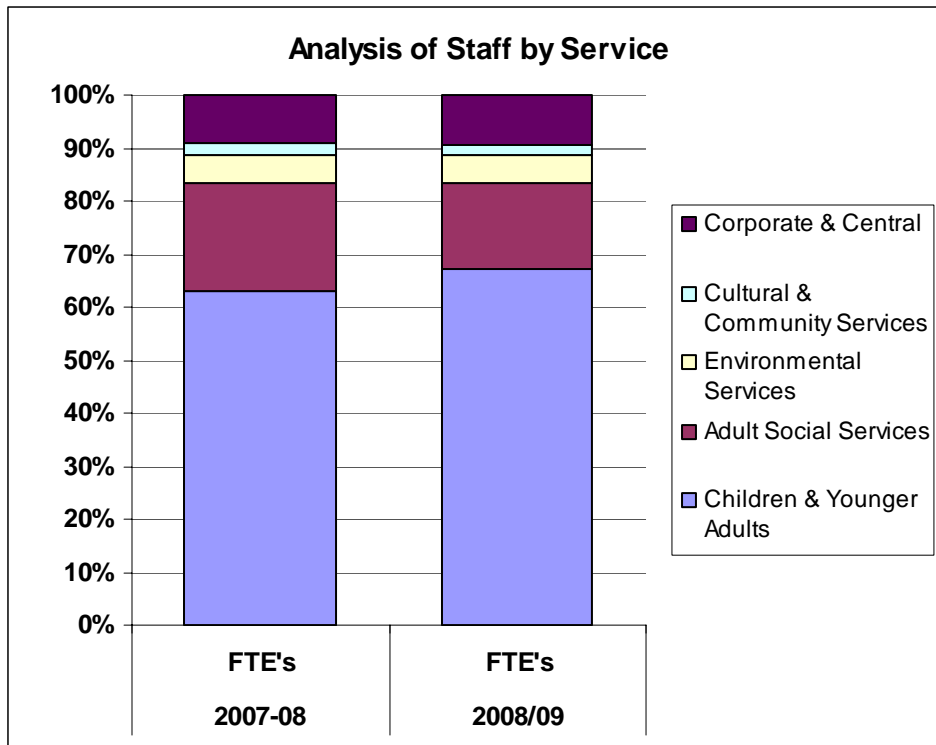
| 2007-08 | Services | 2008-09 |
|----------------|-------------------------------|----------------|
| 143.86 | Children and Younger Adults | 164.44 |
| 205.73 | Adult Social Services | 244.53 |
| 99.60 | Environmental Services | 106.88 |
| 25.73 | Cultural & Community Services | 25.33 |
| 46.00 | Corporate & Central | 78.24 |
| 520.92 | Total | 619.42 |

Personnel Summary

The table below summarises changes in staffing levels during the 2007-08 year and those proposed for 2008-09, showing a net decrease of 79 posts.

| | 2007-08 | 2008-09 | |
|-------------------------------|----------------|----------------|---------------|
| | FTEs | FTEs | Change |
| Children & Younger Adults | 11,740 | 12,427 | 5.9% |
| Adult Social Services | 3,755 | 3,022 | -19.5% |
| Environmental Services | 1,007 | 967 | -3.9% |
| Cultural & Community Services | 402 | 370 | -8.0% |
| Corporate & Central | 1,694 | 1,733 | 2.3% |
| Total | 18,598 | 18,519 | -0.4% |

The following chart provides an illustration of the percentage split of staff across the Council's services.



Key Statistics

Improving Front-line Services

The County Council has been independently judged by the Audit Commission as “Four Star”, the highest possible overall rating, with the added accolade of being judged “Improving Well”.

Each year we:

- Pay for more than 428 schools and 13,315 staff to educate nearly 111,770 pupils.
- Provide a free home help service to 10,400 vulnerable people.
- A meals on wheels service delivering 728,000 meals to vulnerable people.
- Supply over 18,700 aids and adaptations to disabled people.
- Carry out nearly 1,100 child abuse investigations.
- Invest over £25m repairing and improving over 3,500 miles of roads and pavements.
- Organise school transport for 35,000 pupils.
- Respond to over 14,000 requests for consumer information, advice and help.
- Spend £1.7m on books for our 59 libraries.
- Look after 3,200 miles of footpaths, 10 nature reserves and five country parks.
- Dispose of over 321,000 tonnes of waste collected by the district councils.

| | 2007-08 | 2008-09 | Difference |
|-------------------------------------|-----------|-----------|------------|
| General | | | |
| Population | 753,539 | 762,113 | 1.1% |
| Pupil Numbers | 116,350 | 113,660 | -2.3% |
| Road Length (km) | 5,412 | 5,459 | 0.9% |
| Vehicle Flows on Derbyshire's Roads | 3,093,973 | 3,251,441 | 5.1% |
| Elderly Population | 126,666 | 131,049 | 3.5% |
| | £m | £m | |
| Budget | | | |
| Gross Expenditure | 1,051.5 | 1,104.0 | 5.0% |
| Income | 660.8 | 636.9 | -3.6% |
| Net Expenditure | 390.7 | 467.1 | 19.6% |
| Internal Financing Measures | -1.4 | -8.0 | -571.0% |
| Budget Requirement | 389.3 | 459.1 | 17.9% |

| | 2007-08 | 2008-09 | Difference |
|---|----------------|----------------|-------------------|
| Financed by:- | | | |
| Revenue Support Grant | 19.8 | 20.2 | 2.0% |
| Business Rates | 117.8 | 144.7 | 22.8% |
| Area Based Grants | Nil | 32.4 | N/A |
| Council Tax | 251.7 | 261.8 | 4.0% |
| Council Tax at Band D | £996.12 | £1,030.98 | 3.5% |
| Council Tax-base (Band D Equivalents) | 251,976 | 253,827 | 0.7% |
| Collection Fund Surplus | £762,054 | £92,178 | -87.9% |
| Unallocated Reserves | Nil | Nil | N/A |

BUDGET SUMMARY 2008-2009

| Service | Approved Estimate 2008/09 |
|--|---------------------------------|
| Chief Executives & Corporate Resources | 6,097,790 |
| Corporate | 18,823,526 |
| Cultural & Community | 18,638,962 |
| Education | 124,689,423 |
| Environmental Services | 86,389,165 |
| Social Services | 187,978,081 |
| | 442,616,947 |
| Less Capital Charges | (29,677,320) |
| Add Debt Charges | 39,714,000 |
| Less Interest Receipts | (8,445,000) |
| Less Use of Reserves | (9,719,181) |
| Add Contingency | 24,576,554 |
| | 459,066,000 |
| Financed by: | |
| Revenue Support Grant | 20,152,255 |
| National Non Domestic Rates | 144,763,492 |
| Council Tax | 261,782,951 |
| Area Based Grant | 32,367,302 |
| | 459,066,000 |

SUBJECTIVE ANALYSIS

| Approved Estimate 2006/07 | Corporate, Chief Executives & Corporate Resources Department | Education | Cultural & Community Services | Environmental Services | Adult Social Services |
|---------------------------|--|-----------|-------------------------------|------------------------|-----------------------|
|---------------------------|--|-----------|-------------------------------|------------------------|-----------------------|

EXPENDITURE

| | | | | | | |
|--|----------------------|---------------------|----------------------|--------------------|---------------------|---------------------|
| Suspense, Control, Misc | -922,325 | -922,325 | 0 | 0 | 0 | |
| Employees | 592,225,867 | 38,832,762 | 437,593,989 | 10,866,443 | 23,349,734 | 81,582,939 |
| Premises | 55,328,810 | 15,572,353 | 31,382,333 | 1,726,638 | 2,959,174 | 3,688,312 |
| Transport Related Expenses | 30,493,971 | 1,246,757 | 17,204,212 | 738,307 | 5,644,165 | 5,660,530 |
| Supplies and Services | 110,622,177 | 20,447,581 | 62,519,898 | 3,626,446 | 8,063,273 | 15,964,979 |
| Transfer Payments | 3,928,029 | 0 | 3,612,644 | 0 | 113,265 | 202,120 |
| Agency and Contracted Services | 155,595,259 | 4,597,944 | 58,607,224 | 106,411 | 68,854,837 | 23,428,843 |
| Central, Departmental & Technical Services | 76,925,130 | 15,164,884 | 11,202,342 | 2,455,624 | 4,854,609 | 43,247,671 |
| Capital Financing | 33,735,960 | 2,583,339 | 22,030,885 | 511,235 | 7,263,965 | 1,346,536 |
| Resources to be allocated | 16,439,107 | | 4,215,614 | 75,229 | 0 | 12,148,264 |
| Care in the Community | 97,439,809 | | | | | 97,439,809 |
| Underspends | 0 | | | | | |
| TOTAL EXPENDITURE | 1,171,811,794 | 97,523,295 | 648,369,141 | 20,106,333 | 121,103,022 | 284,710,003 |
| Specific Grants | (511,737,366) | (288,660) | (491,863,251) | 0 | (666,882) | (18,918,573) |
| Other Grants | | 0 | | 0 | 0 | |
| Recharges | (112,481,562) | (64,241,760) | (4,770,831) | | (10,023,739) | (33,445,232) |
| Joint Arrangements | | 0 | | | 0 | 0 |
| Other Income | (98,618,510) | (6,614,981) | (22,274,805) | (1,467,371) | (23,893,236) | (44,368,117) |
| TOTAL INCOME | (722,837,438) | (71,145,401) | (518,908,887) | (1,467,371) | (34,583,857) | (96,731,922) |
| TOTAL NET EXPENDITURE | 448,974,356 | 26,377,894 | 129,460,254 | 18,638,962 | 86,519,165 | 187,978,081 |

CAPITAL

The capital programme has been developed following an assessment of capital bids received from services across the Council.

The capital expenditure recommendations have been determined from a detailed assessment of service department proposals for capital investment, utilising, as in previous years, a "scoring" mechanism to reflect the importance of each proposal in meeting a series of objectives, for example Capital Strategy, Asset Management and the Council Plan. Because the impact of capital expenditure and associated borrowing is spread over several years, it is important to consider the effect of any proposals in both the forthcoming and future financial years. There are ongoing revenue costs associated with borrowing.

It may also be possible to consider commencement of a proportion of other schemes (and reconsider part of the 2007/08 deferrals), if capital receipts from sales of land/property are received over and above the prudent assumptions made in funding the proposed programme.

The recommended starts programme should be seen as a provisional Capital Programme at this stage, subject to further option appraisal where appropriate.

Key risks of the plan are the level of government support over the next few years, and above average inflation in buildings costs.

Details of the actual and estimated figures are shown below:

| | 2006-07 Actual £m | 2007-08 Estimate £m | 2008-09 Estimate £m | 2009-10 Estimate £m | 2010-11 Estimate £m |
|----------------------------|----------------------------------|------------------------------------|------------------------------------|------------------------------------|------------------------------------|
| Capital Expenditure | 96.73 | 132.27 | 148.66 | 199.36 | 110.96 |
| Funded by:- | | | | | |
| Borrowing | 35.23 | 30.32 | 60.97 | 85.50 | 37.75 |
| Capital Receipts | 3.09 | 16.32 | 12.36 | 4.27 | 1.00 |
| Capital Grants | 53.35 | 76.75 | 67.27 | 103.39 | 66.21 |
| Capital Reserves | 0.85 | 0.38 | 0.64 | - | - |
| Revenue | 4.21 | 8.50 | 7.42 | 6.20 | 6.00 |

The impact of the increase in borrowing to support the Capital Programme is built into the 5yFP.

2008-09 Recommended Starts Programme

| | Capital Budgets £000s | Met by Capital Grant/Receipt Revenue £000s | Met by Borrowing £000s | Score Rating |
|---|----------------------------------|---|-----------------------------------|---------------------|
| Children and Younger Adults - Schools | | | | |
| Basic Need | 2,379 | - | 2,379 | 54 |
| Schools Access Initiative | 1,609 | - | 1,609 | 55 |
| Capital Modernisation Fund | 16,425 | - | 16,425 | 54 |
| Extended Schools | 1,230 | 1,230 | - | 66 |
| Children's Centres | 2,644 | 2,644 | - | 66 |
| Early Years Capital Grant | 2,552 | 2,552 | - | 66 |
| ICT Grant | 3,427 | 3,427 | - | 66 |
| Local Controlled Voluntary Aided | 1,718 | 1,718 | - | 66 |
| Devolved Formula Capital | 16,216 | 16,216 | - | 66 |
| | 48,200 | 27,787 | 20,413 | |
| Children and Younger Adults – Care | | | | |
| Children's Residential Ofsted Improvements | 250 | - | 250 | 50 |
| | 250 | - | 250 | |
| Adult Social Services | | | | |
| Aids and Adaptations | 1,500 | - | 1,500 | 50 |
| Maintaining Minimum Standards | 600 | - | 600 | 50 |
| Parkwood Hostel Additional Costs | 300 | - | 300 | 50 |
| Oaklands | 4,200 | 375 | 3,825 | 56 |
| Staveley Centre | 3,000 | 1,100 | 1,900 | 56 |
| | 9,600 | 1,475 | 8,125 | |
| Corporate Resources | | | | |
| Health and Safety inc. Fire Certification Works | 500 | - | 500 | 54 |
| Disabled Discrimination Act Risk Management | 500 | - | 500 | 50 |
| | 425 | 175 | 250 | 60 |

| | Capital Budgets £000s | Met by Capital Grant/Receipt Revenue £000s | Met by Borrowing £000s | Score Rating |
|-------------------------------------|----------------------------------|---|-----------------------------------|---------------------|
| Vehicle Replacement (spend to save) | 3,400 | - | 3,400 | 37 |
| County Hall Clubroom Conversion | 350 | - | 350 | 52 |
| | 5,175 | 175 | 5,000 | |
| Environmental Services | | | | |
| Integrated Transport | 9,381 | 9,381 | - | 66 |
| Highways Capital Maintenance | 14,376 | - | 14,376 | 72 |
| Detrunked Roads Capital Grant | 569 | 569 | - | 72 |
| Road Safety Grant | 352 | 352 | - | 72 |
| Countrywide Services | 1,755 | 1,505 | 250 | 77 |
| Land Reclamation Programme | 7,850 | 7,525 | 325 | 60 |
| Ilkeston-Awsworth Additional Costs | 2,600 | 600 | 2,000 | 50 |
| | 36,883 | 19,932 | 16,951 | |
| Contingency | 1,500 | - | 1,500 | |
| Grand Total | 101,608 | 49,369 | 52,239 | |

2009-10 Provisional Starts

| | Capital Budget £000s | Met by Capital Grant £000s | Met by Borrowing £000s |
|---|---------------------------------|---------------------------------------|-----------------------------------|
| Children and Younger Adults Schemes including Primary Capital Programme; Basic Need Modernisation | 34,300 | 28,300 | 6,000 |
| Older Adults | 3,500 | - | 3,500 |
| Corporate Resources | 4,500 | - | 4,500 |
| Environmental Services: including Local Transport Plan (£26m), Land Reclamation (£8m) | 35,800 | 19,500 | 16,300 |

2010-11 Provisional Starts

| | Capital Budget £000s | Met by Capital Grant £000s | Met by Borrowing £000s |
|---|---------------------------------|---|---------------------------------------|
| Children and Younger Adults Schemes including Primary Capital Programme; Basic Need Modernisation | 44,200 | 39,500 | 4,700 |
| Older Adults | 2,000 | - | 2,000 |
| Corporate Resources | 4,500 | - | 4,500 |
| Environmental Services: including Local Transport Plan (£26m), Land Reclamation (£8m) | 37,700 | 20,000 | 17,700 |

The Council's Capital Strategy is integrated into the Corporate Asset Management Plan process for service accommodation needs i.e. the on-going assessment of asset utilisation and building condition, with the key objective being to hold or provide only such assets as are necessary to meet service priorities.

The strategy has regard to the availability of finance which continues at present to be provided mainly by traditional methods which include:

- Borrowing
- Grants
- Revenue Funding
- Capital Receipts

The introduction of the Prudential Code has provided more flexibility in relation to borrowing for capital purposes by councils subject to tests of affordability and prudence. Government support, in the form of direct capital grants, or through support towards debt charges, is also available for specific capital projects. The level of grant support towards debt charges on post April 2006 supported schemes have reduced significantly, which has a severe impact on the affordability of capital programmes.

The opportunity is also now available to consider alternative financing options for capital expenditure, for example 'spend to save' schemes whereby additional debt charges arising from capital expenditure are matched or exceeded by other revenue savings.

Surplus assets are disposed of and all receipts received from such disposals are used to underpin and support the Capital Programme. Exceptions are occasionally agreed by Cabinet whereby a specific receipt is reinvested in and individual service area.

Other considerations, as part of option appraisal, include examination of the ongoing revenue implications of either carrying out – or failing to carry out – a specific scheme. It is regarded as imperative that such implications form a full part of the Council's expenditure planning processes.

Where there is a possibility that the building user can contribute to expenditure costs, such opportunities are pursued. For example, with the introduction of schools delegated capital funding, the Council seeks contributions from individual schools towards their own capital priority schemes and in the case of major schemes at least one year of Formula Capital is required.

Use of other non-traditional methods of procuring capital assets, including Public Private Partnerships (PPP) and Private Finance Initiative (PFI) Schemes remain important considerations.

EDUCATION

Service Analysis

| Revised Estimate 2007/08 | Base Budget 2008/09 | Pay Awards and Price Increases | Other Changes | Approved Estimate 2008/09 |
|---|---------------------|--------------------------------|-------------------|---------------------------|
| £ | £ | £ | £ | £ |
| 400,135,730 Schools Delegated Budgets | 402,709,499 | | (244,127) | 402,465,372 |
| 3,889,771 Other Schools Expenditure | 5,296,575 | 87,039 | 7,578,588 | 12,962,202 |
| 8,391,635 Early Years Education - PVI Sector | 8,434,149 | | 1,282,875 | 9,717,024 |
| 15,328,700 Children's Social Care - Residential | 15,260,250 | 377,091 | 2,442,398 | 18,079,739 |
| 5,209,317 Day Care & After Care | 5,229,858 | 123,248 | (226,514) | 5,126,592 |
| 6,293,554 Social Work | 6,415,917 | 150,552 | (14,889) | 6,551,580 |
| 9,724,157 Other Children's Social Care | 7,701,742 | 142,309 | 1,983,641 | 9,827,692 |
| 3,458,156 Planning & Service Development | 3,191,067 | 65,121 | (45,501) | 3,210,687 |
| 7,464,075 Education Improvement | 6,124,894 | 165,659 | 3,692,330 | 9,982,883 |
| 1,699,656 Standards Fund | 321,178 | | 9,635 | 330,813 |
| 44,241,375 Social Inclusion - Children & Family Support | 35,618,798 | 283,849 | 15,425,705 | 51,328,352 |
| 13,119,198 Social Inclusion - Engagement & Skills | 5,138,918 | 84,900 | 7,614,827 | 12,838,645 |
| 169,365 Other Services - Catering | 169,521 | (156) | 6,266 | 175,631 |
| 11,619,053 Other Services - Home to School Transport | 11,620,996 | 378,808 | | 11,999,804 |
| 15,392,486 Resources & Business Support | 10,616,996 | 261,746 | (1,467,373) | 9,411,369 |
| 35,727,171 Management & Other Recharged Overheads | 39,138,660 | 16,190 | 690,030 | 44,615,771 |
| (180,533) Efficiencies/ Growth | (130,157) | (23,171) | (1,169,327) | (1,322,655) |
| 581,682,866 | 562,858,861 | 2,113,185 | 37,558,564 | 607,301,501 |
| (470,914,895) Government Grants | (455,275,892) | | (22,695,562) | (477,971,454) |
| 110,767,971 Total Children & Younger Adults Budget | 107,582,969 | 2,113,185 | 14,863,002 | 129,330,047 |
| 4,717,133 Previous Years' Pensions | 4,717,133 | 183,965 | | 4,901,098 |
| 115,485,104 Grand Total | 112,300,102 | 2,297,150 | 14,863,002 | 134,231,145 |
| (4,995,536) Less Recharge income | | | (4,770,831) | (4,770,831) |
| 110,489,568 Net Total Expenditure | 112,300,102 | 2,297,150 | 10,092,171 | 129,460,314 |

Subjective Analysis

| Revised Estimate 2007/08 | | Base Budget 2008/09 | Pay Awards and Price Increases | Other Changes | Approved Estimate 2008/09 |
|---|---------------------------|----------------------|--------------------------------|--------------------|---------------------------|
| £ | | £ | £ | £ | £ |
| Subjective Analysis | | | | | |
| <i>This analysis involves an estimation of spending by schools.</i> | | | | | |
| 430,488,771 | Employees | 426,095,458 | 1,847,541 | 9,650,990 | 437,593,989 |
| 29,528,823 | Premises | 28,810,910 | 96,159 | 2,475,264 | 31,382,333 |
| 16,225,018 | Transport | 16,151,827 | 446,440 | 605,946 | 17,204,212 |
| 61,288,540 | Supplies and Services | 61,145,620 | 386,029 | 988,249 | 62,519,898 |
| 3,498,467 | Transfer Payments | 3,496,437 | 46,829 | 69,378 | 3,612,644 |
| 38,277,610 | Agency & Contracted | 36,617,133 | 398,919 | 21,591,172 | 58,607,224 |
| 9,320,623 | Central | 8,001,268 | (17,097) | 3,218,171 | 11,202,342 |
| 21,859,047 | Capital charges | 21,859,047 | 0 | 0 | 21,859,047 |
| 15,142,926 | Capital related | 15,142,926 | 39 | (14,971,127) | 171,838 |
| 10,186,194 | Resources to be Allocated | 9,581,775 | (17,219) | (5,348,942) | 4,215,614 |
| 635,816,019 | Gross Expenditure | 626,902,401 | 3,187,640 | 18,279,101 | 648,369,141 |
| Income: | | | | | |
| (492,594,402) | Government Grants | (486,857,185) | (281,468) | (4,724,598) | (491,863,251) |
| (27,736,513) | Other income | (27,745,114) | (609,022) | 6,079,331 | (22,274,805) |
| (4,995,536) | recharges | 0 | 0 | (4,770,831) | (4,770,831) |
| (525,326,451) | Income | (514,602,299) | (890,490) | (3,416,098) | (518,908,887) |
| 110,489,568 | Net Expenditure | 112,300,102 | 2,297,150 | 14,863,003 | 129,460,254 |

Analysis of Other Changes

| | |
|---|-------------------|
| Adjustments to Central Recharges | 3,049,038 |
| Grants now part of Revenue Support Grant (including Area Based Grant) | 14,005,638 |
| Reduction in funding for Student Services Finance | (77,267) |
| Growth awarded by Council | 4,072,000 |
| Reduction in resources to reflect increased efficiency target | (2,373,700) |
| | 14,863,003 |

Adult Social Services

Service Analysis

| Revised Estimate 2007/08 | | Base Budget 2008/09 | Pay Awards and Price Increases | Other Changes | Approved Estimate 2008/09 |
|--------------------------|-----------------------------------|---------------------|--------------------------------|-------------------|---------------------------|
| £ | | £ | £ | £ | £ |
| 77,759,265 | Community Care | 69,658,645 | 2,007,596 | 9,201,682 | 80,867,923 |
| 61,746,013 | Older People | 55,832,075 | 1,184,070 | 4,186,764 | 61,202,909 |
| 8,583,761 | Disabled People | 7,998,829 | 188,192 | 890,599 | 9,077,620 |
| 19,805,803 | People with Learning Disabilities | 18,548,253 | 430,911 | 2,606,870 | 21,586,034 |
| 7,314,484 | Mental Health | 6,398,794 | 143,042 | 1,185,883 | 7,727,719 |
| 979,555 | Generic Services | 27,051,475 | 369,095 | (26,401,654) | 1,018,916 |
| 17,829,615 | Supporting People | 17,602,697 | 13,215 | 230,551 | 17,846,463 |
| 2,732,936 | Contingency / Unallocated Budgets | (2,464,984) | (414,130) | 10,153,030 | 7,273,916 |
| 196,751,432 | TOTAL EXPENDITURE | 200,625,784 | 3,921,991 | 2,053,725 | 206,601,500 |
| (29,877) | Less Recharge to Other Committees | (344,031) | (896) | 314,154 | (30,773) |
| (38,930,316) | Less Specific Grants | (37,934,315) | | 19,341,669 | (18,592,646) |
| 157,791,239 | TOTAL NET EXPENDITURE | 162,347,438 | 3,921,095 | 21,709,548 | 187,978,081 |

Subjective Analysis

| Revised Estimate 2007/08 | | Base Budget 2008/09 | Pay Awards and Price Increases | Other Changes | Approved Estimate 2008/09 |
|-----------------------------|--|------------------------|--------------------------------------|---------------------|------------------------------|
| £ | | £ | £ | £ | £ |
| 81,805,285 | Employees | 88,432,756 | 1,872,613 | (8,722,430) | 81,582,939 |
| 3,411,077 | Premises | 4,185,179 | 25,971 | (522,838) | 3,688,312 |
| 6,080,871 | Transport Related Expenses | 5,687,144 | 178,453 | (205,067) | 5,660,530 |
| 14,371,624 | Supplies and Services | 12,590,488 | 351,566 | 3,022,925 | 15,964,979 |
| 173,291 | Transfer Payments | 180,412 | 4,966 | 16,742 | 202,120 |
| 23,384,273 | Agency and Contracted Services | 22,841,286 | 72,689 | 514,868 | 23,428,843 |
| 29,140,618 | Internal Recharges | 817,588 | 23,686 | 29,722,617 | 30,563,891 |
| 12,561,464 | Central, Departmental and Technical Services | 6,765,482 | | 5,918,298 | 12,683,780 |
| 1,338,905 | Capital Financing | 3,840,675 | 7,631 | (2,501,770) | 1,346,536 |
| 96,864,947 | Care in the community | 96,890,705 | 1,997,149 | (1,448,045) | 97,439,809 |
| 6,464,692 | Contingency / Unallocated Budgets | 539,270 | (280,757) | 11,889,751 | 12,148,264 |
| 275,597,047 | TOTAL EXPENDITURE | 242,770,985 | 4,253,967 | 37,685,051 | 284,710,003 |
| | INCOME | | | | |
| -39,260,750 | Specific Grants | (38,750,309) | (9,493) | 19,841,229 | (18,918,573) |
| -31,847,911 | Recharges | (1,140,014) | (20,170) | (32,285,048) | (33,445,232) |
| -46,697,147 | Other Income | (40,533,224) | (303,209) | (3,531,684) | (44,368,117) |
| -117,805,808 | TOTAL INCOME | (80,423,547) | (332,872) | (15,975,503) | (96,731,922) |
| 157,791,239 | TOTAL NET EXPENDITURE | 162,347,438 | 3,921,095 | 21,709,548 | 187,978,081 |

Analysis of Other Changes

| Details | £ |
|--|-------------|
| Budget Growth:- | |
| Funding of Underlying Overspend | 2,800,000 |
| Demographic Growth | 3,830,000 |
| Funding for Mental Capacity Act Requirements | 259,000 |
| Funding for Integrated Community Equipment Service | 170,000 |
| Service Redesign (2007/8 only) | (30,000) |
| Tfr of Funding to Children and Younger Adults Department | (6,342,890) |
| Tfr of funding to the HR Shared Service Centre | (79,495) |
| Tfr of funding to Corporate Resources | (249,110) |
| Central Establishment Charges | 630,118 |
| Specific Grants Rolled into RSG | 10,171,124 |
| Specific Grants Rolled into ABG | 11,218,060 |
| Community Care Hyper-Inflation | 1,767,482 |
| Revised Specific Grants | (82,741) |
| Efficiency Savings | (2,352,000) |
| | 21,709,548 |

ENVIRONMENTAL SERVICES

Service Analysis

| Revised Estimate 2007/08 | Description | Base Budget 2008/09 | Pay Awards and Price Increases | Other Changes | Approved Estimate 2008/09 |
|-----------------------------|---|------------------------|--------------------------------------|------------------|---------------------------------|
| £ | | £ | £ | £ | £ |
| 32,544,426 | Network Management | 31,019,969 | 1,086,023 | 3,498,302 | 35,604,294 |
| 18,792,030 | Waste management | 19,623,787 | 600,224 | 2,535,224 | 22,759,235 |
| 8,617,714 | Public Transport Unit | 8,888,264 | 377,034 | (64,457) | 9,200,841 |
| 6,585,425 | Planning | 6,389,933 | 137,882 | 279,392 | 6,807,207 |
| 7,102,265 | Support Services | 7,652,344 | 103,648 | 593,369 | 8,349,361 |
| (74,780) | Highways Property | (118,414) | 1,717 | 1,143 | (115,554) |
| 240,085 | Fleet Management | 203,959 | 258,757 | (20,026) | 442,690 |
| 8,906,491 | Capital Charges | 4,946,091 | | | 4,946,091 |
| | | | | (1,605,000) | (1,605,000) |
| <u>82,713,656</u> | Environmental Services Committee | <u>78,605,933</u> | <u>2,565,285</u> | <u>5,217,947</u> | <u>86,389,165</u> |

Subjective Analysis

| Revised Estimate 2007/08 | Description | Base Budget 2008/09 | Pay Awards and Price Increases | Other Changes | Approved Estimate 2008/09 |
|--------------------------|---|---------------------|--------------------------------|--------------------|---------------------------|
| £ | | £ | £ | £ | £ |
| 22,343,739 | Employees | 22,413,411 | 536,606 | 399,717 | 23,349,734 |
| 2,826,795 | Premises | 2,826,642 | 45,607 | 86,925 | 2,959,174 |
| 5,732,620 | Transport | 5,484,086 | 185,880 | (25,801) | 5,644,165 |
| 10,838,295 | Supplies & Services | 9,079,503 | 248,246 | (1,264,476) | 8,063,273 |
| 109,966 | Transfer Payments | 109,966 | 3,299 | | 113,265 |
| 65,402,621 | Agency & Contracted Services | 64,549,399 | 1,944,859 | 2,360,579 | 68,854,837 |
| 4,158,706 | Central, Departmental & Technical Se | 4,158,706 | 1,587 | 694,316 | 4,854,609 |
| 7,692,616 | Capital Charges | 7,209,624 | 56,349 | (2,008) | 7,263,965 |
| 119,105,358 | Expenditure | 115,831,337 | 3,022,433 | 2,249,252 | 121,103,022 |
| 7,369,175 | Government Grants | 6,277,195 | 58,415 | (5,668,728) | 666,882 |
| 6,654,064 | Recharges to other Committees | 6,654,064 | 27,381 | | 6,681,445 |
| 3,822,294 | Recharges to other Services | 3,342,294 | | | 3,342,294 |
| 22,002,165 | Other Income | 20,951,851 | 371,352 | 2,570,033 | 23,893,236 |
| 39,847,698 | Total Income | 37,225,404 | 457,148 | (3,098,695) | 34,583,857 |
| <u>79,257,660</u> | Environmental Services Committee | <u>78,605,933</u> | 2,565,285 | 5,347,947 | 86,519,165 |

Analysis of Other Changes

| Details | £ |
|--------------------------------------|-------------|
| CEC/uncontrollable budget changes | 688,823 |
| Efficiency Savings | -1,205,000 |
| Waste - Landfill Tax | 2,080,000 |
| Community Transport | 240,000 |
| Traffic Management Act (one-off) | 90,000 |
| MEGZ | -400,000 |
| Concessionary Fares | -1,700,000 |
| Concessionary Fares - rail (one-off) | 180,000 |
| Grants No Longer ring-fenced | 5,859,858 |
| Virements - service redesign | 31,266 |
| Previous Years one-offs | -517,000 |
| | <hr/> |
| | 5,347,947 |
| | <hr/> <hr/> |

COMMUNITY & CULTURAL SERVICES

Service Analysis

| Revised Estimate 2007/08 | | Base Budget 2008/09 | Pay Awards and Price Increases | Other Changes | Approved Estimate 2008/09 |
|--------------------------|--|---------------------|--------------------------------|------------------|---------------------------|
| £ | | £ | £ | £ | £ |
| 8,061,303 | Branch Libraries | 8,000,800 | 114,347 | (117,773) | 7,997,374 |
| 1,152,847 | Mobile Libraries | 1,163,058 | 26,339 | 411 | 1,189,808 |
| 453,479 | Library Administration | 461,034 | 4,225 | 218,708 | 683,967 |
| 55,692 | External & Match Funded Projects | 45,118 | 697 | | 45,815 |
| 199,072 | County Lead Arrangements | 200,349 | 4,413 | (114) | 204,648 |
| 103,311 | City Lead Arrangements | 103,311 | 3,100 | | 106,411 |
| 2,088,201 | Materials Fund | 2,088,201 | 68,395 | | 2,156,596 |
| 12,113,905 | Total Libraries | 12,061,871 | 221,516 | 101,232 | 12,384,619 |
| 728,313 | Other Services | 353,510 | 10,636 | 177 | 364,323 |
| 41,845 | School Library Service | 42,631 | (2,177) | (6,464) | 33,990 |
| 12,884,063 | Total Library Service | 12,458,012 | 229,975 | 94,945 | 12,782,932 |
| 518,073 | Derbyshire Record Office | 520,211 | 8,659 | 15,325 | 544,195 |
| 368,793 | Museum Service | 343,839 | 4,615 | 25,829 | 374,283 |
| 13,770,929 | Total Libraries & Heritage Division | 13,322,062 | 243,249 | 136,099 | 13,701,410 |
| 2,765,775 | Trading Standards Division | 2,773,510 | 60,852 | 224,668 | 3,059,030 |
| 2,626,776 | Department HQ | 2,625,076 | 50,799 | (397,473) | 2,278,402 |
| 145,000 | Underspend | | | | |
| (38,343) | Unallocated Efficiency Savings | (61,889) | | (337,991) | (399,880) |
| 19,270,137 | Total Net Expenditure | 18,658,759 | 354,900 | (374,697) | 18,638,962 |

Subjective Analysis

| Revised Estimate 2007/08 | Base Budget 2008/09 | Pay Awards and Price Increases | Other Changes | Approved Estimate 2008/09 |
|---|---------------------|--------------------------------|------------------|---------------------------|
| £ | £ | £ | £ | £ |
| Expenditure | | | | |
| 10,599,895 Employees | 10,545,089 | 241,719 | 79,635 | 10,866,443 |
| 1,816,319 Premises | 1,816,319 | 20,337 | (110,018) | 1,726,638 |
| 697,859 Transport related Expenses | 714,405 | 22,902 | 1,000 | 738,307 |
| 3,725,388 Supplies & Services | 3,708,453 | 107,011 | (189,018) | 3,626,446 |
| 103,311 Agency & Contracted Services | 103,311 | 3,100 | | 106,411 |
| 2,580,018 CEC's | 2,568,929 | | (113,305) | 2,455,624 |
| 511,235 Capital Financing | 511,235 | | | 511,235 |
| 149,965 Resources to be allocated | 118,071 | 149 | (42,991) | 75,229 |
| 513,200 Underspends | | | | |
| 20,697,190 Total Expenditure | 20,085,812 | 395,218 | (374,697) | 20,106,333 |
| Income | | | | |
| (1,427,053) Other Income | (1,427,053) | (40,318) | | (1,467,371) |
| (1,427,053) Total Income | (1,427,053) | (40,318) | | (1,467,371) |
| 19,270,137 Total Net Expenditure | 18,658,759 | 354,900 | (374,697) | 18,638,962 |

Analysis of Other Changes

| Details | £ |
|--|------------------|
| Efficiency Savings | (322,500) |
| CEC'S & Other Uncontrollable Changes | (412,341) |
| Contribution to HR Shared Service Centre | (15,491) |
| Recurring growth items: | |
| Surestart Librarians | 73,000 |
| Feed & Farm Hygiene | 27,000 |
| Intellectual Property Crime | 45,000 |
| Animal Health, Welfare and Disease Control | 150,000 |
| Specific Grants rolled into Formula Grant | |
| Feed & Farm Hygiene | 23,297 |
| Intellectual Property Crime | 57,338 |
| Total | (374,697) |

CORPORATE BUDGETS

Service Analysis

| Revised Estimate 2007/08 | Base Budget 2008/09 | Pay Awards and Price Increases | Other Changes | Approved Estimate 2008/09 |
|--|---------------------|--------------------------------|------------------|---------------------------|
| £ | £ | £ | £ | £ |
| CORPORATE BUDGETS | | | | |
| 50,852 Magistrates Courts | 50,852 | | | 50,852 |
| 593,821 Registrars | 497,059 | 6,116 | (31,462) | 471,713 |
| 688,858 Coroners | 689,470 | 19,356 | (533) | 708,293 |
| 135,582 Supported Employment | 116,645 | | (114,833) | 1,812 |
| 209,673 Access Reasonable Adjustments | 170,903 | 70 | (1,340) | 169,633 |
| 5,524,000 County Buildings | 5,527,864 | 50,745 | (1,929) | 5,576,680 |
| 5,019,040 Democratic representation and management | 5,019,844 | 41,227 | 98,471 | 5,159,542 |
| 356,044 Members Community Leadership Scheme | 256,000 | | | 256,000 |
| 21,701 Chairs Fund | 21,701 | 651 | 12,349 | 34,701 |
| 15,539 Elections | 15,539 | 348 | (7,938) | 7,949 |
| (187,593) Shipley Park Ltd | (187,593) | | 8,539 | (179,054) |
| (1,409,075) Industrial development | (1,408,974) | (47,381) | 1,456,578 | 223 |
| 7,396,908 Change Management Programme | 7,566,693 | 199,870 | 83,936 | 7,850,499 |
| 3,142,026 Corporate and Democratic Core | 3,142,026 | 20,461 | (6,077) | 3,156,410 |
| 6,581,431 Unapportionable central overheads | 6,581,431 | 234,322 | (129,574) | 6,686,179 |
| 1,573,009 Revenue contributions to capital | 1,573,009 | | | 1,573,009 |
| 437,626 VER/VR scheme | 438,496 | 11,432 | | 449,928 |
| 806,750 MIMS | 673,794 | 20,209 | 3,489 | 697,492 |
| 168,364 Catering | 168,364 | 3,805 | 1,061 | 173,230 |
| 183,863 Support Services - young people | 183,863 | 5,261 | 40,699 | 229,823 |
| (20) Working Standards Initiative | (20) | | 93 | 73 |
| 505,494 Best Value Review - older people | 433,532 | 11,268 | 39,392 | 484,192 |
| 193 PFI | 193 | | (60) | 133 |
| 27,189 Contingency | 27,189 | 816 | | 28,005 |
| 15,899 Other | 2,063 | 427 | (90) | 2,400 |
| 714,243 Second Homes Initiative | 293,314 | 8,799 | 14 | 302,127 |
| 131,329 Performance Management | 91,689 | 2,543 | 9,256 | 103,488 |
| 146,714 PC Commissioning Unit | 146,714 | 3,119 | | 149,833 |
| 5,791,696 Insurance Holding A/Cs | 5,792,000 | 283,103 | 1,126 | 6,076,229 |
| 361,041 Pump Priming for Cost Cutting | | | | |
| 1,725,629 BSF Team | 428,959 | 11,671 | 108,595 | 549,225 |
| (600,000) Wellbeing Grant to PCT Efficiencies | | | (268,000) | (268,000) |
| 40,127,826 CORPORATE BUDGETS TOTAL | 38,312,619 | 888,238 | 1,301,762 | 40,502,619 |
| 40,127,826 GRAND TOTAL | 38,312,619 | 888,238 | 1,301,762 | 40,502,619 |
| (19,692,905) RECHARGES | (19,546,191) | (284,058) | (392,266) | (20,222,515) |
| 20,434,921 NET BUDGET | 18,766,428 | 604,180 | 909,496 | 20,280,104 |

Subjective Analysis

| Revised Estimate 2007/08 | | Base Budget 2008/09 | Pay Awards and Price Increases | Other Changes | Approved Estimate 2008/09 |
|-----------------------------|--|------------------------|--------------------------------------|------------------|---------------------------------|
| £ | | £ | £ | £ | £ |
| | 1,476,020 Suspense, Control, Misc | (318,553) | | (275,553) | (594,106) |
| | 9,985,357 Employees | 10,002,074 | 335,102 | (58,881) | 10,278,295 |
| | 6,522,288 Premises, Grounds, Fixed | 6,522,288 | 194,969 | (541,284) | 6,175,973 |
| | 646,313 Transport Related Expe | 646,313 | 5,928 | (3,621) | 648,620 |
| | 10,627,117 Supplies and Services | 10,480,915 | 329,164 | 204,346 | 11,014,425 |
| | 3,045,298 Agency & Contracted | 3,192,037 | 96,031 | | 3,288,068 |
| | 8,464,048 Central, Dept, Technical | 8,426,160 | 14,680 | (17,973) | 8,422,867 |
| | 2,441,492 Capital Financing Cost | 2,441,492 | 3 | -7774 | 2,433,721 |
| | 43,207,933 TOTAL EXPENDITURE | 41,392,726 | 975,877 | (700,740) | 41,667,863 |
| | (279,048) Specific Grants | (279,048) | (9,612) | | (288,660) |
| | (19,692,905) Recharges to Other Services | (19,546,191) | (284,058) | (392,266) | (20,222,515) |
| | (2,801,059) Other Income | (2,801,059) | (78,027) | 2,002,502 | (876,584) |
| | (22,773,012) TOTAL INCOME | (22,626,298) | (371,697) | 1,610,236 | (21,387,759) |
| | 20,434,921 TOTAL EXPENDITURE | 18,766,428 | 604,180 | 909,496 | 20,280,104 |

Analysis of Other Changes

| Details | £ |
|--------------------------------------|-----------|
| CEC's & Other Uncontrollable Changes | (400,082) |
| Increase in Chairs Fund | 13,000 |
| Industrial Development | 1,456,578 |
| Increase in Corvu Software Costs | 8,000 |
| BSF Team one off increase | 100,000 |
| Efficiencies | (268,000) |
| | <hr/> |
| | 909,496 |

CHIEF EXECUTIVE & CORPORATE RESOURCES

Service Analysis

| Revised Estimate 2007/08 | Description | Base Budget 2008/09 | Pay Awards and Price Increases | Other Changes | Approved Estimate 2008/09 |
|--------------------------|---------------------------------------|---------------------|--------------------------------|--------------------|---------------------------|
| £ | | £ | £ | £ | £ |
| | CHIEF EXECUTIVES | | | | |
| | Office of the Chief Executive | 4,829,817 | 115,212 | (53,045) | 4,891,984 |
| | Regeneration Treasure Chest | 199,018 | 5,971 | | 204,989 |
| | Grants | 267,494 | 7,225 | 12,955 | 287,674 |
| | Youth Offending Teams | 1,248,673 | 26,944 | 249,534 | 1,525,151 |
| | Community Economic Development | 7,316 | 104 | (5,151) | 2,269 |
| | Sustainability | 89,793 | 417 | 5,641 | 95,851 |
| | Call Centre | 1,756,140 | 21,102 | (15,428) | 1,761,814 |
| | Community Safety | 1,009,709 | 24,544 | 991,947 | 2,026,200 |
| | Emergency Planning | 609,866 | 10,879 | (6,989) | 613,756 |
| | CHIEF EXECUTIVES TOTAL | 10,017,826 | 212,398 | 1,179,464 | 11,409,688 |
| | CORPORATE RESOURCES DEPARTMENT | | | | |
| | IT Division | 4,132,816 | 83,981 | (29,297) | 4,187,500 |
| | Personnel Division | 3,541,481 | 66,310 | (96,730) | 3,511,061 |
| | Property Division | 6,131,454 | 140,105 | (61,246) | 6,210,313 |
| | County Secretaries | 3,516,444 | 64,075 | 91,526 | 3,672,045 |
| | Corporate Finance Division | 4,367,633 | 71,496 | 14,575 | 4,453,704 |
| | Business Support | 2,987,857 | 54,292 | (71,396) | 2,970,753 |
| | Shared Service Centre | 2,343,846 | 57,603 | (286,678) | 2,114,771 |
| | Corporate Budgets | 1,190,697 | 44,548 | 1,219,256 | 2,454,501 |
| | Sub-Total | 28,212,228 | 582,410 | 780,010 | 29,574,648 |
| | Property Maintenance | 8,833,585 | 277,114 | 22,000 | 9,132,699 |
| | CORPORATE RESOURCES | 37,045,813 | 859,524 | 802,010 | 38,707,347 |
| | Less Total Recharges | (40,102,242) | (8,253) | (3,908,750) | (44,019,245) |
| | NET BUDGET | 6,961,397 | 1,063,669 | (1,927,276) | 6,097,790 |

Subjective Analysis

| Revised Estimate 2007/08 | Base Budget 2008/09 | Pay Awards and Price Increases | Other Changes | Approved Estimate 2008/09 |
|--------------------------------|---------------------|--------------------------------|--------------------|---------------------------|
| £ | £ | £ | £ | £ |
| Resources to be Allocated | 131,093 | 12,192 | (471,504) | (328,219) |
| Employees | 28,400,420 | 694,308 | (540,261) | 28,554,467 |
| Premises | 9,040,391 | 280,512 | 75,477 | 9,396,380 |
| Transport Related Expenses | 582,751 | 17,386 | (2,000) | 598,137 |
| Supplies and Services | 7,779,890 | 185,560 | 1,467,706 | 9,433,156 |
| Agency and Contracted Services | 300,738 | 11,096 | 998,042 | 1,309,876 |
| Central, Dept, Technical | 6,356,007 | | 386,010 | 6,742,017 |
| Capital Financing Cost | 81,556 | 62 | 68,000 | 149,618 |
| TOTAL EXPENDITURE | 52,672,846 | 1,201,116 | 1,981,470 | 55,855,432 |
| Specific Grants | | | | |
| Recharges to Other Services | (40,102,246) | (8,253) | (3,908,746) | (44,019,245) |
| Other Income | (5,609,203) | (129,194) | | (5,738,397) |
| TOTAL INCOME | (45,711,449) | (137,447) | (3,908,746) | (49,757,642) |
| TOTAL EXPENDITURE | 6,961,397 | 1,063,669 | (1,927,276) | 6,097,790 |

Analysis of Other Changes

| Details | £ |
|--|--------------------|
| CECs | (3,535,004) |
| Efficiency Savings | (782,300) |
| Growth | 1,795,000 |
| Other | 13,015 |
| Grants previously paid to districts | 998,042 |
| School HR team not transferring to shared service centre | (416,029) |
| | (1,927,276) |

STATISTICS

Location

The county of Derbyshire lies in the centre of England, forming the North-West part of the East Midlands Regions. It is bordered by four administrative counties (Cheshire, Staffordshire, Leicestershire, Nottinghamshire) and seven metropolitan districts (Barnsley, Sheffield, Rotherham, Kirklees, Oldham, Stockport, Tameside.). It also encircles the unitary authority of Derby City.

Three major conurbations lie adjacent to Derbyshire's borders (Manchester, Nottingham, Sheffield) while Leicester, Burton-on-Trent, Stoke-on-Trent and Huddersfield are all within a relatively short distance. The county's central position in relation to the population of England is reflected in the fact that roughly one in six people (8.4 million) live within 30 kilometres of its boundary. Some 2.1 million people live within 10 kilometres.

Communications

Derbyshire is well served by both road and rail. The M1 motorway flanks the eastern side of the county and provides easy access to the north and south. The A50 corridor gives access to the M6 and the north-west. Chesterfield and Derby have regular and frequent rail services to London, Birmingham, Sheffield, Leeds and Manchester. Matlock and Belper have direct services to London. The principal airport serving the county is East Midlands situated just south of the county boundary at Castle Donington. Residents of the northern part of the county also make use of Manchester and Sheffield airports.

Urbanisation

Derbyshire covers some 255,000 hectares that constitute nearly 2% of the land area of England and 16% of the land area of the East Midlands. There are strong contrasts between the rural west and urban east and between the upland north-west and lowland south and east. The Peak District National Park covers most of north-west Derbyshire encompassing more than a third of the total land area of the county.

The county contains eight towns with populations of over 20,000. These are Belper, Buxton, Chesterfield, Dronfield, Glossop, Ilkeston, Long Eaton and Swadlincote. The largest concentration of population is in the Chesterfield area. Down the eastern side of the county the towns of Alfreton, Ripley, Heanor, Ilkeston and Long Eaton form an almost continuous band of urban development. In contrast some 16% of Derbyshire's population live in sparsely populated rural wards where there are less than 2 people per hectare.

Population

The 2001 Census³ population of Derbyshire is 734,585. This represents 1.5% of the population of England and 17.6% of the population of the East Midlands.

With an average of 2.9 persons per hectare, Derbyshire is less densely populated than England as a whole (3.8 persons per hectare) but slightly more heavily populated than the East Midlands (2.7).

| Age Structure | Number of people | % of population | | |
|---------------|------------------|-----------------|------------|---------|
| | | This area | E.Midlands | England |
| 0-4 years | 40,701 | 5.5 | 5.7 | 6.0 |
| 5-15 years | 103,561 | 14.1 | 14.3 | 14.2 |
| 16-24 years | 66,442 | 9.0 | 10.8 | 10.9 |
| 25-64 years | 400,919 | 54.6 | 53.0 | 53.0 |
| 65 and over | 122,962 | 16.7 | 16.1 | 15.9 |
| All people | 734,585 | 100.0 | 100.0 | 100.0 |

Age Structure

Derbyshire has an older age structure than both England and the East Midlands, with 16.7% in the 65+ age group compared with 15.9% for England. Around 2% of the county's population are aged 85 or over and there are some 4,600 people aged 90 or over.

| Area | Population | % of County |
|-------------------|----------------|---------------|
| Amber Valley | 116,471 | 15.9% |
| Bolsover | 71,766 | 9.8% |
| Chesterfield | 98,845 | 13.5% |
| Derbyshire Dales | 69,469 | 9.5% |
| Erewash | 110,099 | 15.0% |
| High Peak | 89,433 | 12.2% |
| NE Derbyshire | 96,940 | 13.2% |
| S Derbyshire | 81,562 | 11.1% |
| Derbyshire | 734,585 | 100.0% |

³ The Census was carried out on April 29, 2001 by the Office for National Statistics. "Key Statistics for Local Authorities" was published on February 13, 2003. This comprises 500 headline statistics drawn from all the topics covered by the Census.

Living Arrangements/Marital Status

Of the adults (those aged 16 or over) in the county, 55.8% are living as married couples. This is a somewhat higher proportion than seen nationally (50.7%). A further 10.4% of the adult population in the county are living as cohabiting couples.

Irrespective of living arrangements, one in twelve of the county's adult population is divorced and one in four is single (never married).

Households

There are 308,869 households in the county and the average household size is 2.4 persons. This compares with 2.5 persons in 1991 and 2.7 in 1981. The proportion of single person households has increased from 24.0% in 1991 to 27.7% in 2001, but the Derbyshire figure remains lower than the national average (30.1%).

Some 29.3% of households in the county contain dependent children and 10.7% contain children aged under five. There are 12,071 households with dependent children that have no adults in employment.

Lone parent households (with dependent or grown-up children) constitute 8.3% of all households, a slightly smaller proportion than seen nationally or regionally. Lone parents with dependent children constitute 5.3% of all households. Of this latter group, 11.4% are headed by a male compared with 9.5% in England.

Nearly one in four of the county's households consist entirely of pensioners, a slightly higher proportion than seen nationally and regionally. Around 605 of these households are lone pensioners.

Ethnicity

Only 1.5% of the population of Derbyshire classified themselves as non-white, a much smaller proportion than the 9.1% average for England as a whole. This is an increase on the 1991 figure (0.9%), although part of the change is due to the additional category of "mixed ethnic groups" used in the 2001 Census but not in 1991. Indians form the largest minority ethnic group in the county with 0.4% of the total population.

A very high proportion of Derbyshire's population was born in England (95.5%). This compares with 87.4% for England as a whole. Only 1.4% of the county's population was born outside the E.U.

Housing

More than 70% of Derbyshire's population live in detached or semi-detached houses. This compares with only 54.1% in England as a whole. There is a correspondingly lower proportion of people living in flats: 7.3% compared with a national average of 19.7%.

There are 1,480 second residences/holiday homes in Derbyshire, which is nearly a quarter of the East Midlands total.

Nearly three quarters of Derbyshire's households (74.4%) live in owner-occupied accommodation which is well above the national average (68.7%) and a little higher than the East Midlands figure (72.2%). Only 2.1% of households live in Housing Association accommodation compared with 6.1% in England as a whole.

Some 625 households (0.2% of the total) do not have their own bath/shower or toilet, 5.8% are without central heating and 3.1% are living in overcrowded accommodation. Around 4% of Derbyshire's households live at first-floor level or above.

Economic Activity

Derbyshire has an above average proportion of people aged 16-74 who are employed part-time (13.3% compared with 11.8% in England as a whole). There are also relatively more people who are retired (14.9% compared with 13.5%) or who are permanently sick or disabled (6.0% compared with 5.3%).

The county's unemployment rate (3.2%) is slightly lower than the national average (3.4%), but a larger proportion of the unemployed are aged 50 (20.9%) or are long-term unemployed (31.5%). Derbyshire men tend to work longer hours than their national counterparts (42.9 hours per week on average compared with 42.2 hours). The women, on the other hand, work about an hour less than the national average (30.4 hours compared with 31.4) because of the relatively large proportions of part-timers.

Industry

Nearly a quarter of all employees in Derbyshire (22.8%) work in the manufacturing sector compared with only 14.8% in England as a whole. There are correspondingly fewer people than average who work in the service sector, although the proportion of employees in education, health and social work (18.5%) is similar to the national figure. Business and professional services, on the other hand, account for only 9.7% of Derbyshire employees compared with 13.2% nationally. Employment in banking and financial services is also below average (2.5% compared with 4.8%).

GLOSSARY

Aggregate External Finance

The total level of support the Government provides to local authorities. This support is normally made up of Revenue Support grant, some specific and special grants and the amount distributed from business rates.

Assumed National Council Tax

The difference between Total Standard Spending and Aggregate External Finance is approximately the amount that would be raised in Council Tax if local authorities as a whole spent at the level of their Formula Spending Share. Dividing this total amount by the total Council Tax base produces an assumed national tax rate. This then gives the standard level of Council Tax for a band D property if all authorities spent at the level of their Formula Spending Share. This amount is used to work out how the Revenue Support grant should be shared between authorities. Formerly known as “Council Tax at Standard Spending”

Billing Authorities

These are the 354 authorities that collect Council Tax – borough councils, district councils, London Boroughs, and unitary authorities.

Budget Requirement

This is the amount each authority estimates as its planned spending, after deducting any funding from reserves and any income it expects to raise (other from the Council Tax and general funding from the Government). This general funding from the government is Revenue Support Grant, redistributed business rates and some of the specific and special grants. The budget requirement is set before the beginning of the financial year.

Business Rates

These rates, called National Non-Domestic Rates, are the means by which local businesses contribute to the cost of providing local authority services. All business rates are paid into a central pool. The pool is then divided between all authorities depending on the number of residents each authority has.

Capital Starts Programme

This represents amounts made available to service committees to undertake new capital projects.

Capping

When the Government limits an authority's budget requirement.

Control Totals

These are the totals of all authorities' Formula Spending Share for each major service area. They are set out in Annex E to The Local Government Finance Report.

Council Tax Base

The Council Tax base of an area is equal to the number of band D equivalent properties. To work this out, the government counts the number of properties in each band and works out an equivalent number of band D properties. For example, one band H property is equivalent to two band D properties, because it pays twice as much tax. The amount of revenue that could be raised by council Tax in an area is calculated allowing for discounts and exemptions but assuming that everyone pays. How this is calculated is set out in Annex C to the Local Government Finance Report.

Council Tax Bands

There are eight Council Tax bands. How much Council Tax each household pays depends on the value of the homes.

Council Tax Discounts and Exemptions

Discounts are available to people who live alone and owners of homes that are not anyone's main home. Council Tax is not charged for certain properties, known as exempt properties, like those lived in only by students.

Damping

"Damping" is sometimes used to describe the way the Government phases in the effect of changes to the Formula Spending Share formulas. It can limit the effect these changes have on council Tax levels, and give authorities more time to adjust their spending following the changes.

Distributable Amount

This is the estimated total amount in the business rate pool that is available to be distributed to local authorities. The business rates are collected by local authorities and paid into a national pool and then redistributed to all authorities.

Floors and Ceilings

A method by which stability in funding is protected through limiting the effect of wide variations in grant increases. A floor guarantees a fixed level of increase in grant and a ceiling results in no authority getting more than a certain level of increase. The grant increases by authorities who are either at the floor or the ceiling are scaled back by a fixed proportion to help pay for the floor.

Formula Spending Share (FSS's)

These are the Government's way of dividing up Total Assumed Spending (not including specific and special grants) between local authorities. The formulae used to work out Formula Spending Shares are set out in Section 4 of the Local government Finance Report from 1990-01 to 2002-03. This job was done by Standard Spending Assessments.

FTE

Full Time Equivalent

Indicators

Information used in the calculation of Formula Spending Share, such as population, numbers of school children, numbers of elderly people or lengths of road. The indicators are set out in Annex D to the Local Government Finance Report.

The Local Government Finance Settlement

The Local Government Finance Settlement is the annual determination of local authority spending as made by the Government and debated by Parliament. It includes:

- the amount of government support for that spending;
- how government support will be distributed between local authorities; and
- the support given to certain other local government bodies.

Medium Term Financial Plan

This is a three-year forward plan of budgeted expenditure and resources.

Net Revenue Expenditure

This represents the authority's budget requirement and use of reserves.

Passporting

A term used to reflect the Government's requirement that the increase in the School's FSS should be reflected in the budgets allocated to Schools.

Precept

This is the amount of Council Tax income county councils, police authorities, the Metropolitan Police, parish councils and some fire authorities need to provide their services. The amounts for all local authorities providing services in an area appear on one Council Tax bill that comes from the billing authority.

Precepting Authority

This is an authority that sets a precept to be collected by billing authorities through the Council Tax bill. County councils, police authorities, the Metropolitan Police, some fire authorities and parish councils are all precepting authorities.

Receiving Authorities

These are the 432 authorities that are entitled to receive Revenue Support Grant.

Reserves

This is a council's accumulated surplus income (in excess of expenditure) which can be used to finance future spending.

Revenue Expenditure

This is expenditure on recurring items, including the running of services and financing capital spending that is paid for by borrowing.

Revenue Support Grant (RSG)

A Government grant to make up the shortfall between a local authority's Formula Spending Share and the amount it would receive from Council Tax for Standard Spending and redistributed business rates.

Share of Assumed National Council Tax

This is the portion of the Assumed National Council Tax attributable to each class of authority. These elements are set out in Annex B to the Local Government finance report, formerly known as "Standard Tax Elements".

Special Grants

These are a type of grant paid by the Government. Each grant has its own Special Grant Report that must be debated and approved by Parliament.

Specific Grants

As the name suggests, these are grants made to authorities for specific purposes and they can be spent only for that purpose. For example, specific grants are paid to help fund: projects aimed at reducing drug and alcohol abuse; and extra places for children under five in pre-school education.

Specified Body

This is the term used for bodies (such as the Local Government Improvement and Development Agency and the national Youth Agency) that are directly funded from Revenue Support Grant, and that centrally provide services for local government as a whole.

Total Assumed Spending

The amount of spending by local government as a whole, which the Government assumes in its spending plans. Formerly known as "Total Standard Spending"