

Guide to adoption

Useful Organisations

AAA)/NORCAP (Adults Affected by Adoption/.....)
112 Church Rd, Wheatley,
Oxfordshire OX33 1LU

Telephone: 01865 875000
www.norcap.org.uk

Registrar General (Office of National Statistics)
General Register Office,
Smedley Hydro,
Trafalgar Rd,
Southport PR8 2HH

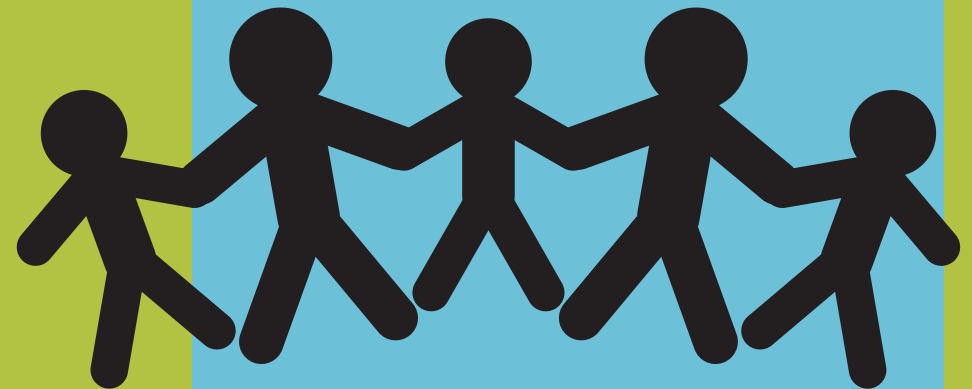
This organisation operates the National Adoption Contact Register for adult adoptees and their birth relatives

Telephone: 0845 603 7788
www.gro.gov.uk

Contact us

By phone: 01629 53 2271
By post: Derbyshire Adoption Support Team, County Hall, Matlock, DE4 3AG
By email: centraladoptionteam@derbyshire.gov.uk

Adoption Support Services in Derbyshire



 **DERBYSHIRE**
County Council
Improving life for local people
Derbyshire Adoption Service

Adoption Support Services

The Derbyshire Adoption Support Service will provide advice and information to anyone affected by adoption. We also manage the Letterbox Scheme and the Derbyshire Contact Register. This leaflet gives some examples of what support is available.

Support for Adoptive Families

- Advice, information and guidance on all aspects of adoption including talking to children about adoption.
- Signposting to other services and support, eg Child and Adolescent Mental Health Services
- Training, workshops and social events
- Young peoples group
- Advice on contact and Letterbox issues
- Adoption Support Assessments
- Regular Newsletters

Support for Birth Relatives

- Advice information and guidance on adoption issues.
- The opportunity to discuss feelings around the adoption of a birth relative.
- Advice and support for those considering the possibility of contact with an adult adopted person.
- Support with reunions and where a reunion is not possible
- Support when reunions are not possible.
- Support Group for birth parents.
- Help and advice with the Letterbox scheme.

Support for adult adopted people

- Advice, information and guidance on all aspects of adoption.
- Support in accessing adoption records
- Advice and support for those considering the possibility of contact with birth relatives.
- Assistance in making contact with birth relatives
- Support with reunions
- Support when reunions are not been possible.

We offer a duty telephone system between 9:30 - 1:00 each weekday morning. An appointment to see an adoption support worker can also be made at one of our monthly surgeries held in Chesterfield, Buxton, Ripley and Derby.

Derbyshire Contact Register

This is a means whereby people adopted through Derbyshire County Council and their birth relatives can register a view as to their willingness or otherwise for future contact and their current contact details. Anyone wanting more information should contact the Adoption Support Team.

