

Summary Statement of Accounts 2008-2009

CONTENTS

	PAGE
• <u>Explanatory Foreword</u> –	2
• <u>Income and Expenditure (I&E) Account</u> – This statement reports the net cost of all the services which the Council is responsible for, and demonstrates how that cost has been financed.	3
• <u>Balance Sheet</u> – The Balance Sheet shows all balances including reserves, long-term debt, fixed and net current assets, together with summarised information on the fixed assets held.	4
• <u>Pensions Fund Accounts</u> – The pension fund's financial statements provide information about the financial position and performance of the fund.	6

EXPLANATORY FOREWORD

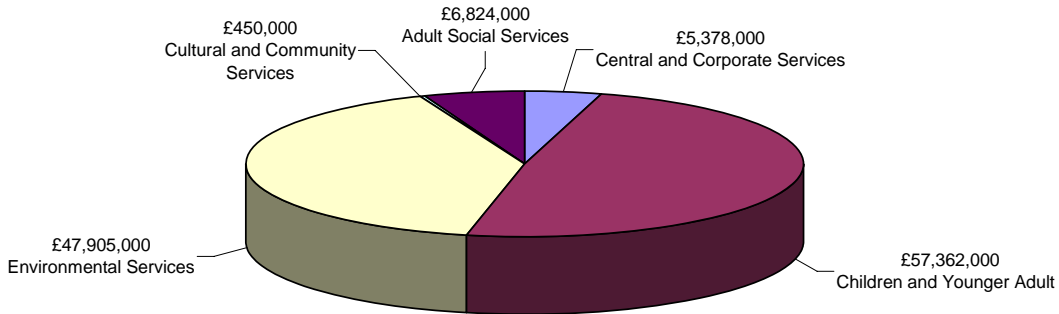
Introduction

The aim of this summary statement is to provide a brief introduction to the financial performance of the Council in the year ending 31 March 2009. The overall financial position of the Council is analysed in the full Statement of Accounts which can be found on the Councils website.

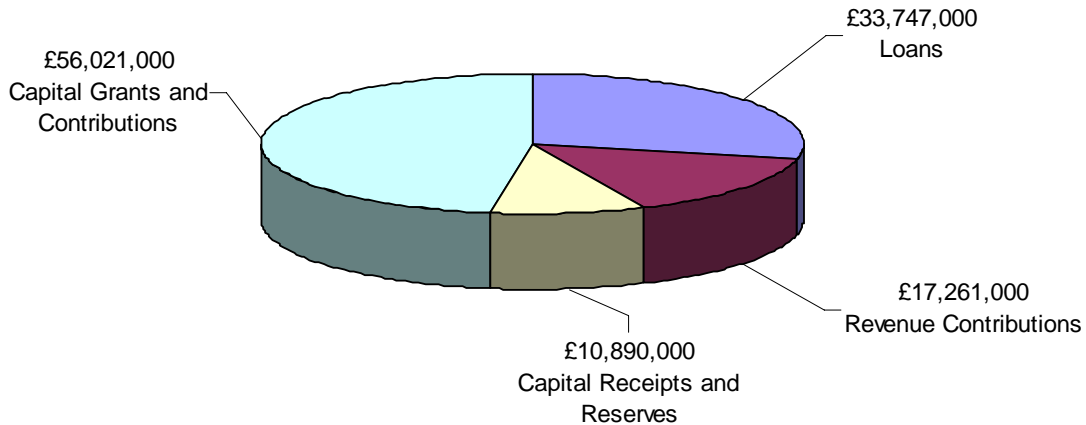
- Capital Expenditure**

Capital expenditure is in relation to the purchase, or improvement of assets which are in use over a number of years (fixed assets) such as schools, roads, vehicles and residential homes. Below is a breakdown of where funding has been spent and how this was paid for;

Where funding was spent:



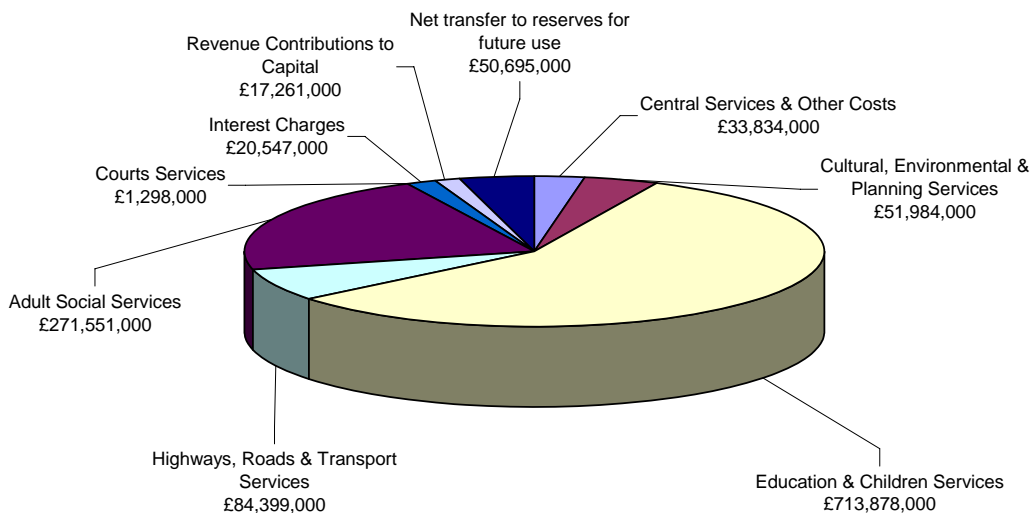
Where funding came from:



- Revenue Expenditure**

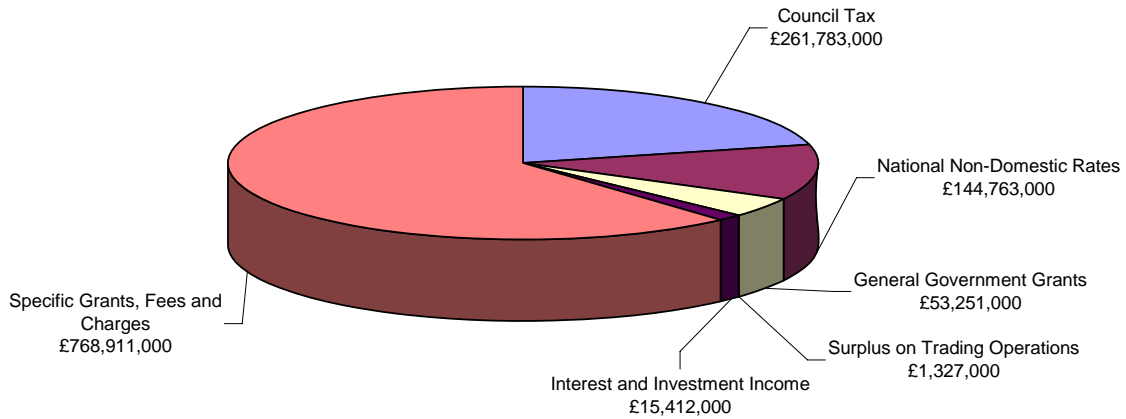
Revenue expenditure is the day to day expenses incurred by the Council in providing its services. Below is a breakdown of where funding has been spent and how this was paid for;

Where gross funding was spent:

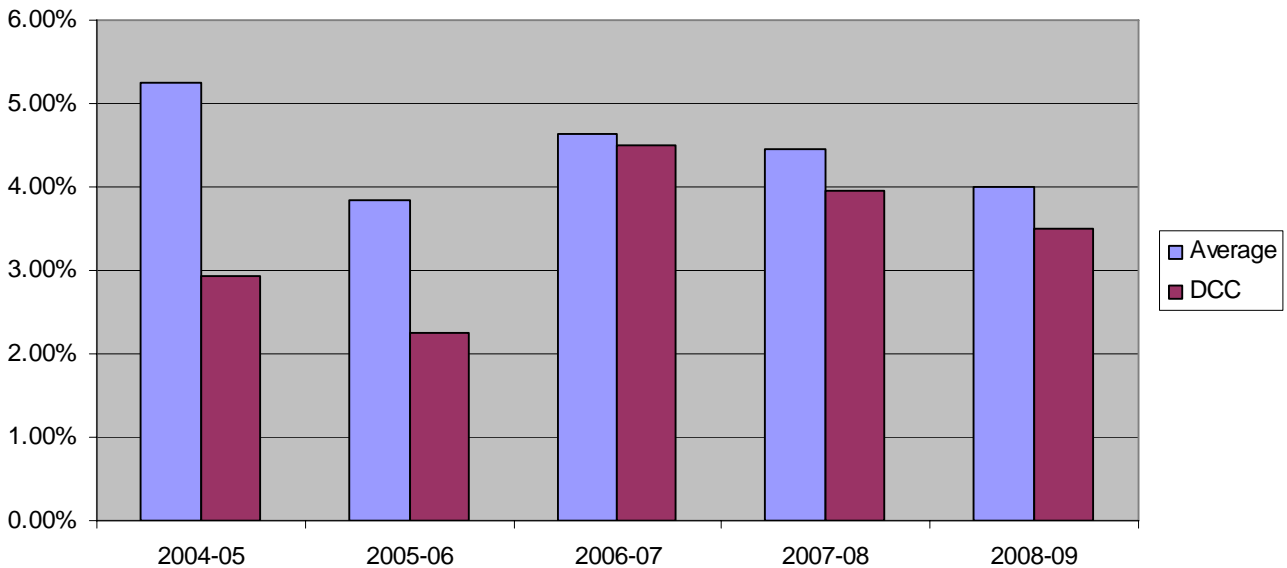


EXPLANATORY FOREWORD

Where funding came from:



The Council Tax demand of £261,783k represented a band D equivalent of £1,030.98, an increase of 3.5% from 2007-08 which was below the shire county average of 3.9%. Below shows the Councils performance in maintaining a below shire average council tax increase over the last 5 years:



- Use of Resources Assessment

The Use of Resources assessment looks at how well the organisation is using its resources (such as money, staff, land and buildings) to meet the needs of local people in a way that provides value for money. The council achieved a score of 2 out of 4 for the use of resources assessment, meaning that the council is performing adequately in this area. 45% of councils achieved a 2, with 51% achieving a score of 3 and just 2% achieving a score of 4. Only 1% of councils achieved a score of 1 (performing poorly).

- Responding to the Economic Downturn

The Council has taken steps to respond to the economic climate such as;

- Revaluation of fixed assets.
- Reviewing the bad debt provision.
- Setting aside contingencies for higher fuel costs and other non-standard inflation.
- Investing time in identifying alternative funding sources.

INCOME AND EXPENDITURE ACCOUNT

The Council also understands that it has a duty to local taxpayers and small businesses and has recently discussed initiatives it is putting in place to support them through the current economic downturn.

This account summarises the resources that have been generated and consumed in providing services and managing the council during the last year. It includes all day-to-day expenses and related income on an accruals basis, as well as transactions measuring the value of fixed assets actually consumed and the real projected value of retirement benefits earned by employees in the year.

2007-08 Restated		Note	2008-09		
Net Expenditure £'000			Gross Expenditure £'000	Income £'000	Net Expenditure £'000
4,009	Central Services to the Public		29,001	(21,508)	7,493
43,965	Cultural, Environmental & Planning Services		51,984	(7,741)	44,243
86,382	Education and Children Services		713,764	(611,524)	102,240
40,498	Highways, Roads & Transport Services		84,070	(29,547)	54,523
161,156	Adult Social Services		271,551	(86,879)	184,672
833	Courts Services		1,298	(332)	966
7,834	Corporate & Democratic Core		9,957	(500)	9,457
18,159	Non Distributed Costs		6,095	0	6,095
0	Acquired Operations		0	0	0
362,836	Net Cost of Services		1,167,720	(758,031)	409,689
(1,333)	(Surplus) on Trading Operations	4			(1,327)
18,378	Interest Payable and Similar Charges				20,547
(17,029)	Interest and Investment Income				(15,412)
9,878	Pensions Interest Cost & Expected Return on Pension Assets	39			24,269
(1,546)	(Gain) / Loss on Disposal of Assets				5,759
256	Levies & Precepts				239
371,440	Net Operating Expenditure				443,764
(251,759)	Council Tax				(261,783)
(117,796)	National Non-Domestic Rates				(144,763)
(21,919)	General Government Grants	13			(53,251)
(20,034)	(Surplus) for the Year				(16,033)

BALANCE SHEET

2007-08 Restated £'000		Note	2008-09	
			£'000	£'000
	<i>Tangible Fixed Assets</i>			
1,325,195	Land & Buildings		1,366,876	
49,846	Vehicles, Plant & Equipment		49,161	
205,472	Infrastructure Assets		229,769	
3,508	Community Assets		4,989	
76,255	Non-Operational Assets		89,629	1,740,424
0	Intangible Fixed Assets			208
64,669	Long Term Debtors			63,154
0	Long Term Investments			16,276
1,724,945	Total Long-Term Assets			1,820,062
	<i>Current Assets</i>			
4,558	Stocks / Work in Progress		3,840	
50,789	Debtors		54,651	
289,476	Short Term Investments		287,878	
3	Landfill Usage Allowances		0	346,369
	<i>Current Liabilities</i>			
(129,540)	Creditors		(124,004)	
(16,122)	Temporary Loans		(27,082)	
(6,002)	Short Term Loans – Public Works Loan Board		(31,973)	
(21,053)	Cash Overdrawn		(15,156)	(198,215)
1,897,054	Total Assets Less Current Liabilities			1,968,216
(414,480)	Long Term Borrowing		(382,701)	
(5,689)	Loan Liability - OLAS		(5,457)	
(157,317)	Government Grants and Contributions Deferred		(195,536)	
(6,945)	Insurance Provisions	31	(7,061)	
(6,150)	Other Provisions	32	(7,436)	(598,191)
(478,499)	Liability Relating to Defined Benefit Pension Scheme			(421,435)
827,974	TOTAL ASSETS LESS LIABILITIES			948,590
	Represented By:			
24,523	Revaluation Reserve			50,312
1,135,125	Capital Adjustment Account			1,138,098
(700)	Financial Instruments Adjustment Account			(524)
23,302	Useable Capital Receipts Reserve			17,899
37,006	General Fund Balance			64,210
31,541	Schools Balances			27,488
5,676	Capital Earmarked Reserves			621
50,000	Revenue Earmarked Reserves			71,921
(478,499)	Pensions Reserve			(421,435)
827,974	TOTAL EQUITY			948,590

PENSIONS FUND ACCOUNTS

FUND ACCOUNT

Restated 2007-08 £'000		Note	2008-09 £'000
	Contributions and Benefits		
122,114	Contributions	4,19	133,761
11,160	Transfers in	5	6,235
133,274			139,996
85,644	Benefits	6,19	90,669
7,465	Payments to and on account of leavers	7	3,902
1,067	Administrative expenses	8	1,070
94,176			95,641
39,098	Net additions from dealings with members		44,355
	Return on investments		
72,563	Investment income	9	72,960
(4,378)	Taxation	10	(4,064)
(121,782)	Change in market value of investments	11	(422,805)
(2,482)	Investment management expenses	13	(2,557)
(56,079)	Net return on investments		(356,466)
(16,981)	Net decrease in the Fund during the year		(312,111)
2,087,881	Net assets of the Fund at 1 April 2008		2,070,900
2,070,900	Net assets of the Fund at 31 March 2009		1,758,789

NET ASSET STATEMENT

Restated 31 March 08 £'000		Note	31 March 09 £'000
2,067,366	Investment assets	11,12	1,758,609
(3,451)	Investment liabilities	11,12	(7,165)
7,679	Current assets	15	8,359
(694)	Current liabilities	16	(1,014)
2,070,900	Net assets of the Fund at 31 March 2009		1,758,789

CONTACT US

This document maybe made available in Braille, on audio tape or in large print on request from the Call Derbyshire contact centre:

Phone : 08456 058 058

E-mail : contact.centre@derbyshire.gov.uk