

PUBLIC

# DERBYSHIRE AND DERBY ROAD SAFETY PARTNERSHIP SPEED MANAGEMENT PROTOCOL

2018



**Document Information**

Title Derbyshire and Derby Road Safety Partnership – Speed Management Protocol

Author: DDRSP

Reviewed: DDRSP Management Group

**Document Issue Status**

Table of Amendments

| <b>NO</b> | <b>APPROVAL DATE</b> | <b>SECTION</b> | <b>DETAILS</b>        | <b>AUTHOR</b> |
|-----------|----------------------|----------------|-----------------------|---------------|
| 1         | 2018                 | All            | First Issue           | DDRSP         |
| 2         | 20/02/2023           | All            | See Review Schedule 1 | DDRSP         |

**TABLE OF CONTENTS**

- 1. Executive Summary ..... 4
- 2. Key principals of the SMP..... 4
- 3. Roles and Responsibilities..... 4
- 4. Supporting documentation ..... 4

## 1. Executive Summary

The purpose of the Speed Management Protocol (SMP) is to provide a consistent, approach to the management of speed and concerns about speeding vehicles on the roads of Derbyshire. It aims to reduce casualties, improve the safety and quality of life for residents and those who travel through, whilst involving local communities in decisions affecting their local area.

The SMP is a partnership approach designed to investigate every speed enquiry made to the authorities by residents of Derbyshire. It adopts an evidence led process, delivering an honest and realistic response which is transparent and all inclusive.

This document will be subject to a biennial review.

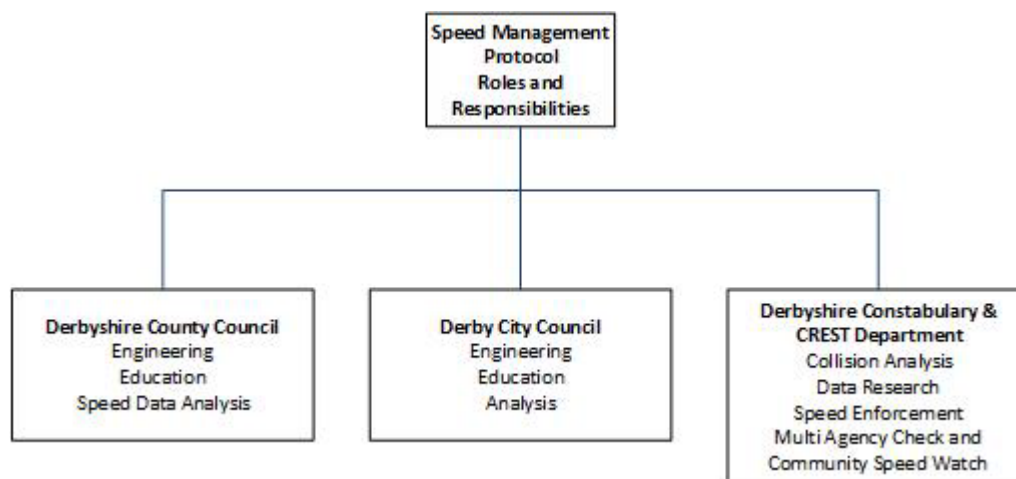
## 2. Key principals of the SMP

- Improve the quality of life in local communities, by promoting a safer and calmer traffic environment.
- Encourage high levels of driver compliance with speed limits and improve overall driver behaviour.
- Involve the community in speeding issues and implementation of the solution.
- Reduce the risk to all road users.
- Reduce the demand upon the Health Service and other public services.
- Introduce a structured, simple and flexible system and approach to speed management,
- Introduce innovative solutions to speed related issues where appropriate Be cost effective and sustainable.

## 3. Roles and Responsibilities

Figure 1 shows the roles and responsibility for the partnership in regard to speed management.

Figure 1: Roles and Responsibilities



## 4. Supporting documentation

The partnership has created a technical annex which details both engineering and enforcement measures that are in place to support speed management. The technical annex can be found on the [Derbyshire County Council asset management website](#).

There is also an ongoing task to create a library of responses to speed management enquiries across the partnership. This will ensure a joined-up approach to all enquiries.